

ABB BALDOR RELIANCE III

Customer information packet

M1763T

25/6.3HP, 1760/870RPM, 3PH, 60HZ, 286T, 1040M

Class - None

Division - Not Applicable

Specifications

Enclosure	TEFC
Frame	286T
Frame Material	Iron
Frequency	60.00 Hz
Haz Area Class and Group	None
Haz Area Division	Not Applicable
Motor Letter Type	Three Phase
Output @ Frequency	6.300 HP @ 60 HZ 25.000 HP @ 60 HZ
Phase	3
Synchronous Speed @ Frequency	1800 RPM @ 60 HZ
Voltage @ Frequency	460.0 V @ 60 HZ
Agency Approvals	UR CSA
Ambient Temperature	40 °C
Auxiliary Box	NO AUXILLARY BOX
Auxiliary Box Lead Termination	None
Base Indicator	Rigid
Bearing Grease Type	Polyrex EM (-20F +300F)
Blower	None
Current @ Voltage	32.000 A @ 460.0 V
Design Code	B
Drip Cover	No Drip Cover
Duty Rating	CONT
Electrically Isolated Bearing	Not Electrically Isolated
Feedback Device	NO FEEDBACK
Front Face Code	Standard
Front Shaft Indicator	None
Heater Indicator	No Heater
High Voltage Full Load Amps	12.0 a
Insulation Class	F
Inverter Code	Not Inverter

Part Detail

Revision	AD
Type	AC
Mech. spec.	10C151
Base	
Status	PRD/A
Elec. spec.	10WGW442
Layout	10LYC151
Eff. date	01-07-2026
CD Diagram	CD0032
Poles	04/08
Leads	6#10
Proprietary	False
Created date	01-01-0001

KVA Code	F
Lifting Lugs	Standard Lifting Lugs
Locked Bearing Indicator	Locked Bearing
Motor Lead Exit	Ko Box
Motor Lead Quantity/Wire Size	6 @ 10 AWG
Motor Lead Termination	Flying Leads
Motor Standards	NEMA
Motor Type	1040M
Mounting Arrangement	F1
Number of Poles	4 8
Overall Length	27.76 IN
Product Family	General Purpose
Pulley End Bearing Type	Ball
Pulley Face Code	Standard
Pulley Shaft Indicator	Standard
Rodent Screen	None
Service Factor	1.15
Shaft Diameter	1.875 IN
Shaft Extension Location	Pulley End
Shaft Ground Indicator	No Shaft Grounding
Shaft Rotation	Reversible
Shaft Slinger Indicator	Shaft Slinger
Speed	1760 rpm 870 rpm
Speed Code	2S-1W-VT
Starting Method	Direct on line
Thermal Device - Bearing	NONE (OLD)
Thermal Device - Winding	None
Vibration Sensor Indicator	No Vibration Sensor
Winding Thermal 1	None
Winding Thermal 2	None

Nameplate

NP1256L										
CAT.NO.	M1763T									
SPEC.	10C151W442									
HP	25/6.3									
VOLTS	460									
AMP	32/12									
RPM	1760/870									
FRAME	286T		HZ	60		PH	3			
SER.F.	1.15	CODE	F	DES	B	CLASS	F			
NEMA-NOM-EFF		PF								
RATING	40C AMB-CONT									
CC										
DE	6311		ODE	6309						
ENCL	TEFC	SN								

Accessories

Part number	Description	Multiplier
10-1305	C FACE KIT	A8
10EP1502A01SP	D-FLANGE KIT	A8

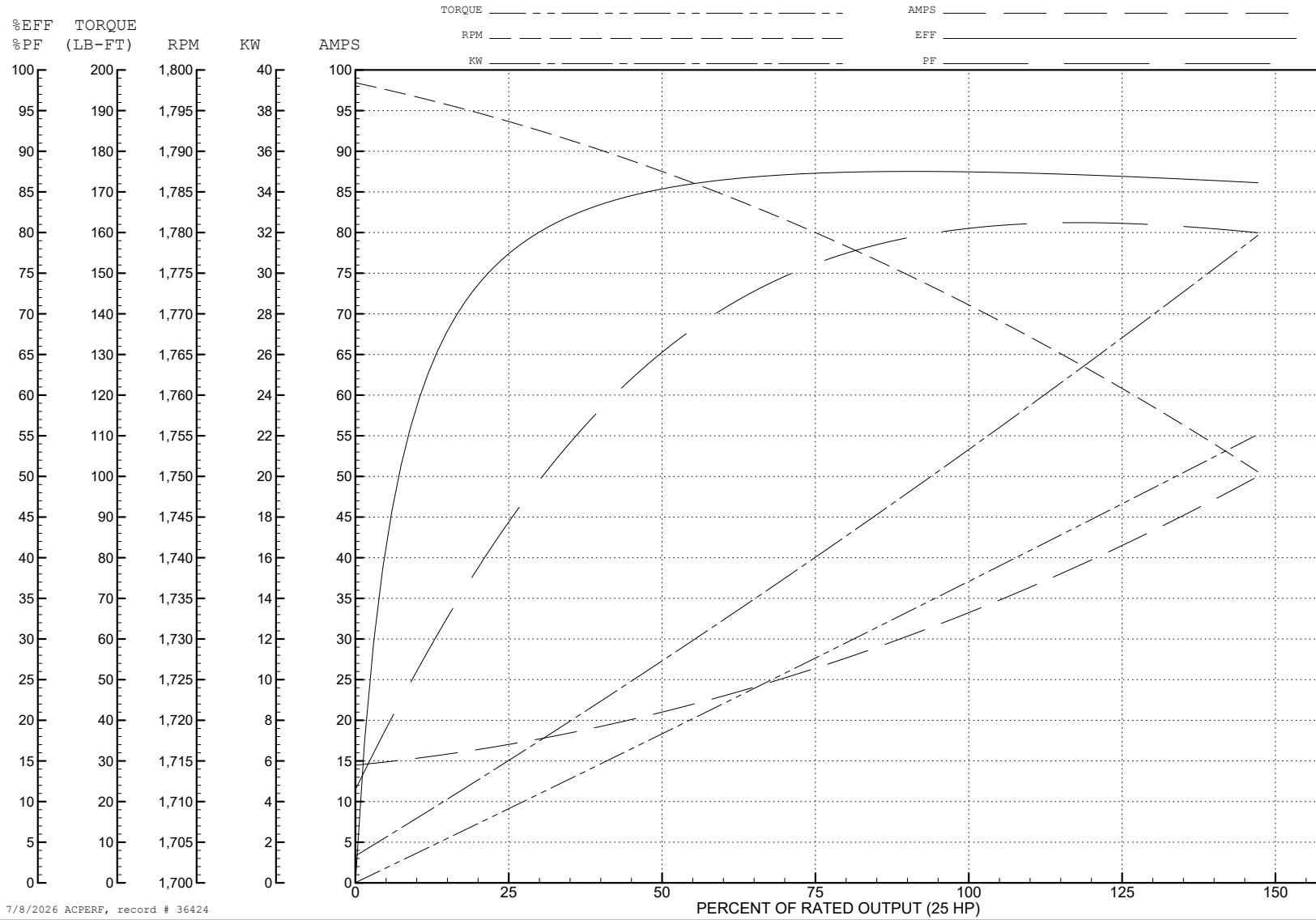
ABB Motors and Mechanical Inc.

WINDING # 10WGW442

Typical performance - not guaranteed values.

25 HP 3 PH 60 HZ 1772 RPM 460 V 1040M

TORQUES (LB-FT): PO=164 PU=98 LR=132 LRA=175



7/8/2026 ACPERF, record # 36424

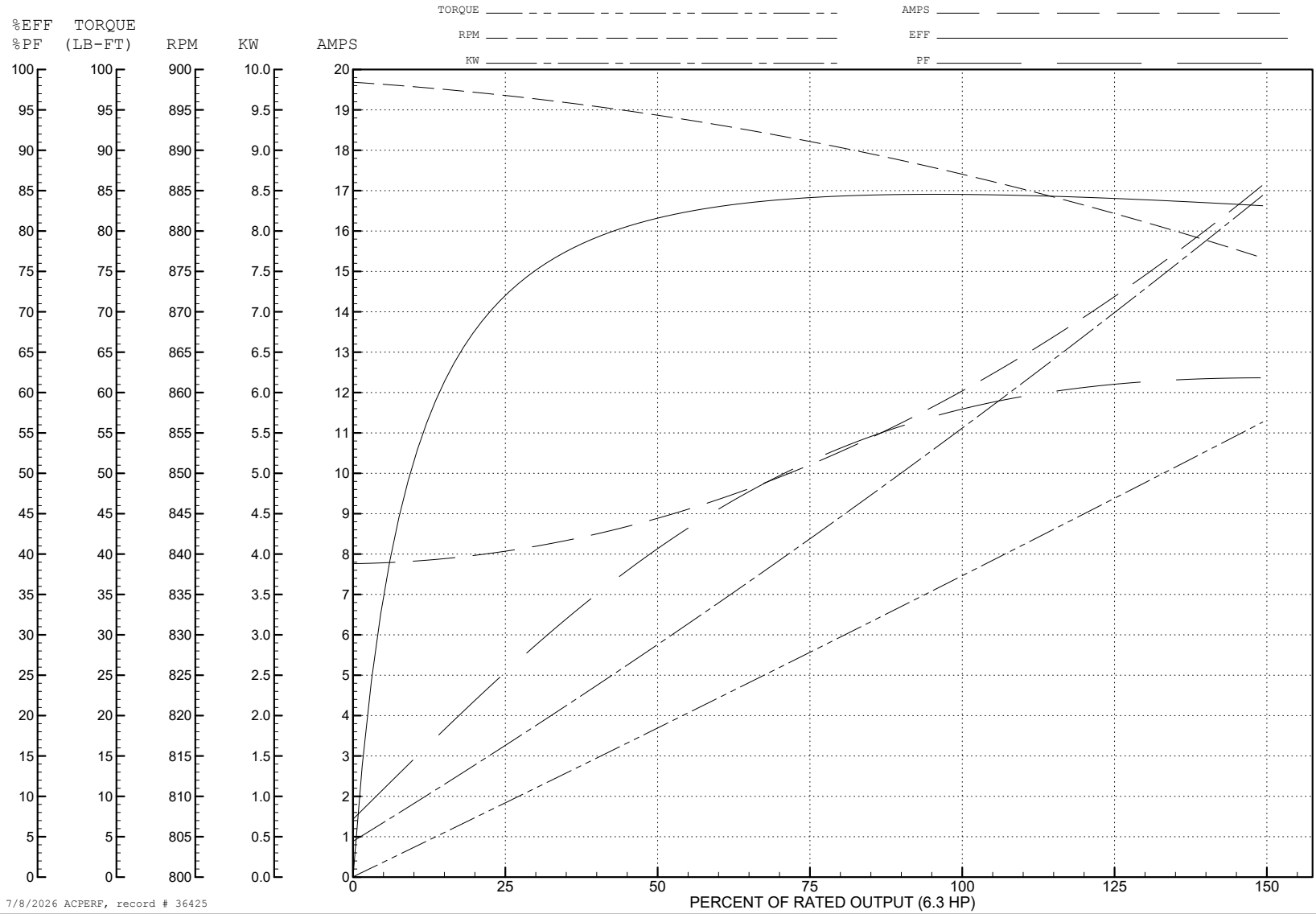
ABB Motors and Mechanical Inc.

WINDING # 10WGW442

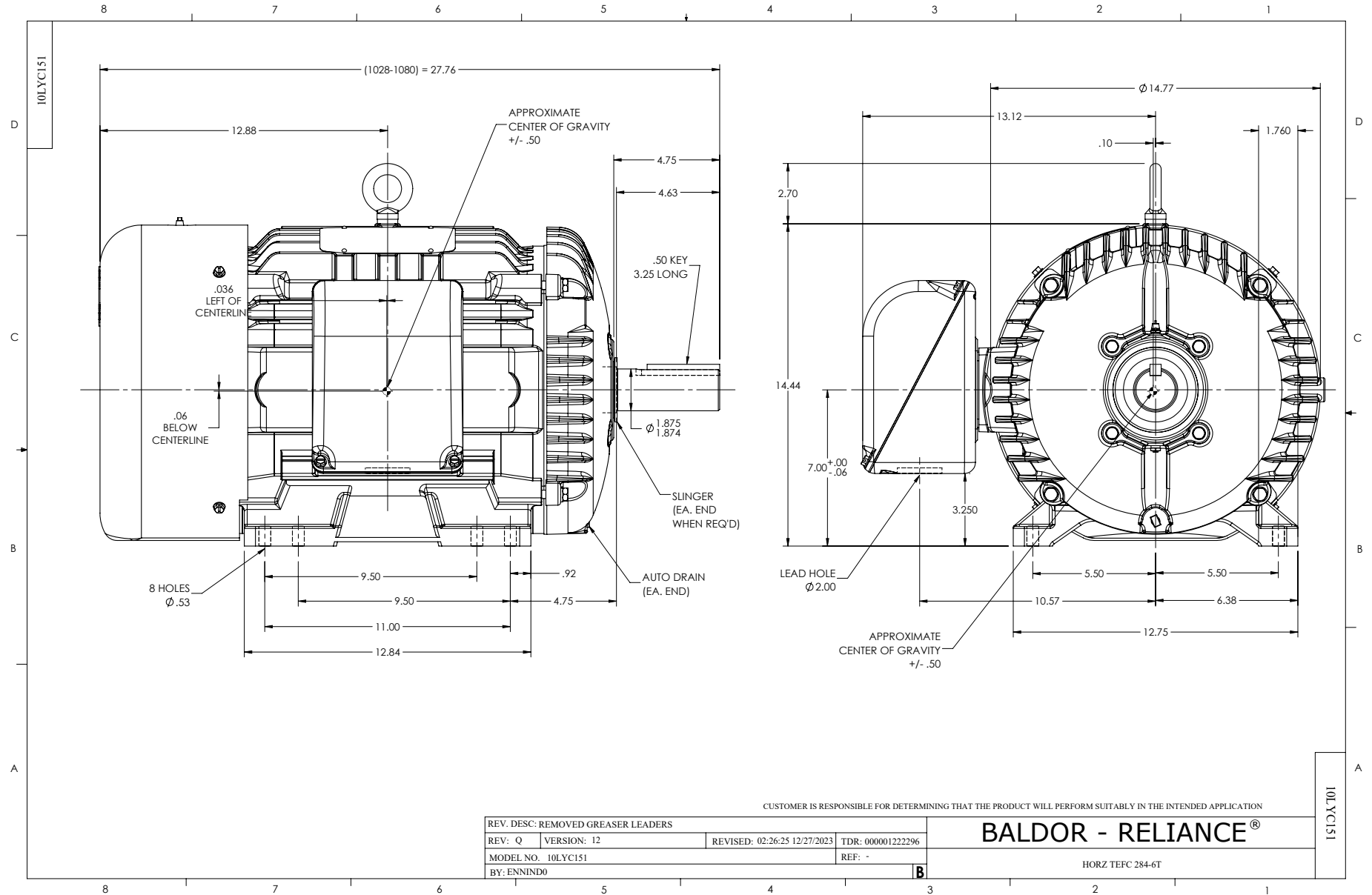
6.3 HP 3 PH 60 HZ 887 RPM 460 V 1040M

Typical performance - not guaranteed values.

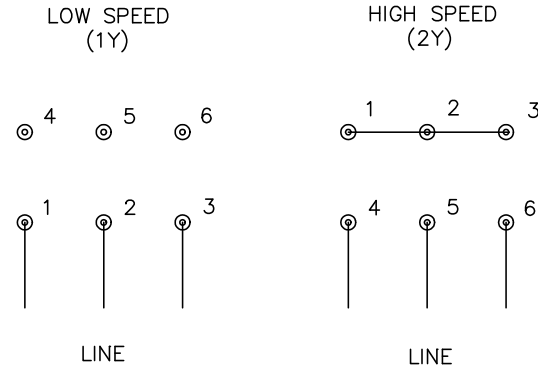
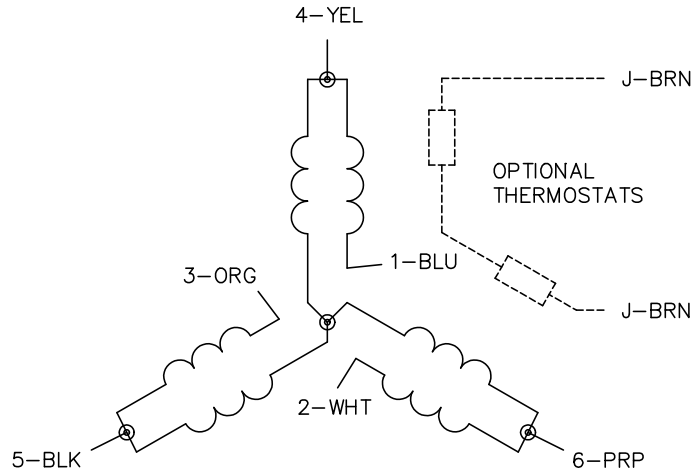
TORQUES (LB-FT): PO=72 PU=41 LR=55 LRA=45



7/8/2026 ACPERF, record # 36425



CD0032



NOTES:

1. INTERCHANGE ANY TWO LINE LEADS TO REVERSE ROTATION.
2. OPTIONAL THERMOSTATS ARE PROVIDED WHEN SPECIFIED.
3. ACTUAL NUMBER OF INTERNAL PARALLEL CIRCUITS MAY BE A MULTIPLE OF THOSE SHOWN ABOVE.
4. LEAD COLORS ARE OPTIONAL. LEADS MUST ALWAYS BE NUMBERED AS SHOWN.

CD0032

REV. DESC: REVISE TO SHOW OPTIONAL COLORS			
REV. LTR: E	BY: JLP	REVISED: 01/22/99 8:27	TDR: 0171435
CD0032		FILE: AAA00005145	MDL: -
		MTL: -	

BALDOR ELECTRIC Co.

3PH, SV, 6 LEADS, 2-SPEED 1-WINDING VARIABLE TORQUE