

BALDOR • RELIANCE

Customer information packet

M1762T

20/5HP, 1760/870RPM, 3PH, 60HZ, 284T, 1034M

Class - None

Division - Not Applicable

Copyright © All product information within this document is subject to ABB Motors and Mechanical Inc. copyright © protection, unless otherwise noted.

10/6/2024 11:40:19 PM

Specifications

Enclosure	TEFC
Frame	284T
Frame Material	Iron
Frequency	60.00 Hz
Haz Area Class and Group	None
Haz Area Division	Not Applicable
Motor Letter Type	Three Phase
Output @ Frequency	5.000 HP @ 60 HZ 20.000 HP @ 60 HZ
Phase	3
Synchronous Speed @ Frequency	1800 RPM @ 60 HZ
Voltage @ Frequency	460.0 V @ 60 HZ
Agency Approvals	UR CSA
Ambient Temperature	40 °C
Auxillary Box	No Auxillary Box
Auxillary Box Lead Termination	None
Base Indicator	Rigid
Bearing Grease Type	Polyrex EM (-20F +300F)
Blower	None
Current @ Voltage	26.000 A @ 460.0 V
Design Code	B
Drip Cover	No Drip Cover
Duty Rating	CONT
Electrically Isolated Bearing	Not Electrically Isolated
Feedback Device	NO FEEDBACK
Front Face Code	Standard
Front Shaft Indicator	None
Heater Indicator	No Heater
High Voltage Full Load Amps	9.4 a
Insulation Class	F
Inverter Code	Not Inverter

Part detail

Revision	AD
Type	AC
Mech. spec.	10C151
Base	
Status	PRD/A
Elec. spec.	10WGW441
Layout	10LYC151
Eff. date	08-05-2024
CD Diagram	CD0032
Poles	04/08
Leads	6#10
Proprietary	False
Created date	01-01-0001

KVA Code	F
Lifting Lugs	Standard Lifting Lugs
Locked Bearing Indicator	Locked Bearing
Motor Lead Exit	Ko Box
Motor Lead Quantity/Wire Size	6 @ 10 AWG
Motor Lead Termination	Flying Leads
Motor Standards	NEMA
Motor Type	1034M
Mounting Arrangement	F1
Number of Poles	4 8
Overall Length	27.76 IN
Product Family	General Purpose
Pulley End Bearing Type	Ball
Pulley Face Code	Standard
Pulley Shaft Indicator	Standard
Rodent Screen	None
Service Factor	1.15
Shaft Diameter	1.875 IN
Shaft Extension Location	Pulley End
Shaft Ground Indicator	No Shaft Grounding
Shaft Rotation	Reversible
Shaft Slinger Indicator	Shaft Slinger
Speed	1760 rpm 870 rpm
Speed Code	2S-1W-VT
Starting Method	Direct on line
Thermal Device - Bearing	NONE (OLD)
Thermal Device - Winding	None
Vibration Sensor Indicator	No Vibration Sensor
Winding Thermal 1	None
Winding Thermal 2	None

Nameplate

NP1256L									
CAT.NO.	M1762T								
SPEC.	10C151W441								
HP	20/5								
VOLTS	460								
AMP	26/9.4								
RPM	1760/870								
FRAME	284T		HZ	60		PH	3		
SER.F.	1.15	CODE	F	DES	B	CLASS	F		
NEMA-NOM-EFF		PF							
RATING	40C AMB-CONT								
CC									
DE	6311		ODE	6309					
ENCL	TEFC	SN							

Accessories

Part number	Description	Multiplier
10-1305	C FACE KIT	A8
10EP1502A01SP	D-FLANGE KIT	A8

AC Induction Motor Performance Data

Record # 33615

Typical performance - not guaranteed values

Winding: 10WGW441-R002		Type: 1034M	Enclosure: TEFC	
Nameplate Data			460 V, 60 Hz: High Speed Connection	
Rated Output (HP)	20/5	Full Load Torque	59.38 LB-FT	
Volts	460	Start Configuration	direct on line	
Full Load Amps	25/10	Breakdown Torque	132 LB-FT	
R.P.M.	1765/880	Pull-up Torque	85.7 LB-FT	
Hz	60 Phase	Locked-rotor Torque	105 LB-FT	
NEMA Design Code	A KVA Code	Starting Current	156 A	
Service Factor (S.F.)	1.15	No-load Current	10.47 A	
NEMA Nom. Eff.	0 Power Factor	Line-line Res. @ 25°C	0.592 Ω	
Rating - Duty	40C AMB-CONT	Temp. Rise @ Rated Load	60°C	
S.F. Amps		Temp. Rise @ S.F. Load	88°C	
		Locked-rotor Power Factor	39.3	
		Rotor inertia	2.73 LB-FT ²	

Load Characteristics 460 V, 60 Hz, 20 HP

% of Rated Load	25	50	75	100	125	150	S.F.
Power Factor	48	70	79	83	85	84	86
Efficiency	83.6	89.3	90.4	89.8	89.1	86.9	87.4
Speed	1793	1786	1778	1767	1758	1747	1765
Line amperes	11.77	15.12	19.8	24.96	30.61	37.43	28.9

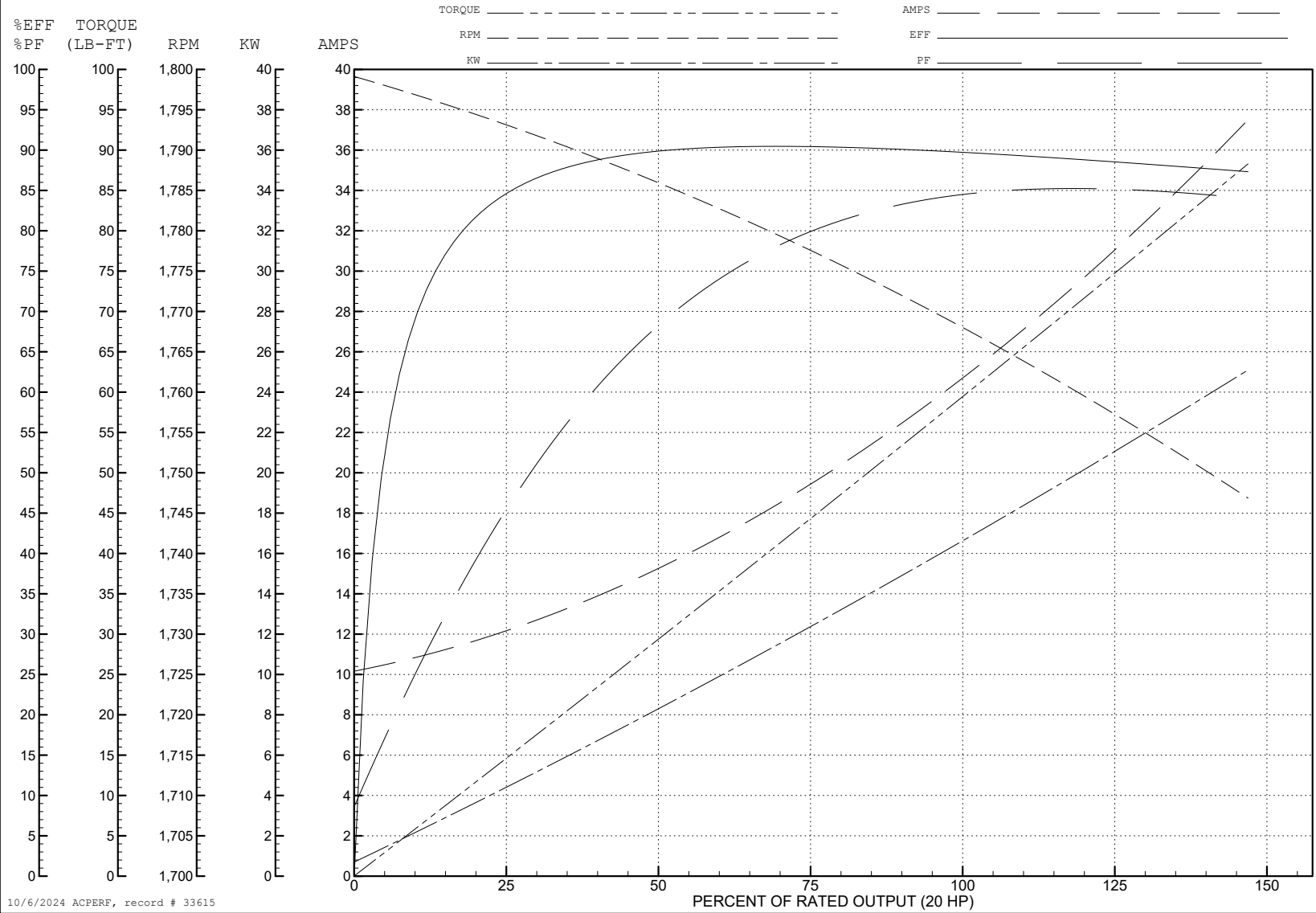
ABB Motors and Mechanical Inc.

WINDING # 10WGW441

Typical performance - not guaranteed values.

20 HP 3 PH 60 HZ 1767 RPM 460 V 1034M

TORQUES (LB-FT): PO=132 PU=85.7 LR=105 LRA=156



10/6/2024 ACPERF, record # 33615

AC Induction Motor Performance Data

Record # 33616

Typical performance - not guaranteed values

Winding: 10WGW441-R002		Type: 1034M	Enclosure: TEFC	
Nameplate Data			460 V, 60 Hz: Low Speed Connection	
Rated Output (HP)	20/5	Full Load Torque	31.26 LB-FT	
Volts	460	Start Configuration	direct on line	
Full Load Amps	25/10	Breakdown Torque	45.2 LB-FT	
R.P.M.	1765/880	Pull-up Torque	49.8 LB-FT	
Hz	60 Phase	Locked-rotor Torque	71.3 LB-FT	
NEMA Design Code	A KVA Code	Starting Current	42.2 A	
Service Factor (S.F.)	1.15	No-load Current	7.14 A	
NEMA Nom. Eff.	0 Power Factor	Line-line Res. @ 25°C	2.37 Ω	
Rating - Duty	40C AMB-CONT	Temp. Rise @ Rated Load	29°C	
S.F. Amps		Temp. Rise @ S.F. Load	39°C	
		Locked-rotor Power Factor	37.8	
		Rotor inertia	2.73 LB-FT ²	

Load Characteristics 460 V, 60 Hz, 5 HP

% of Rated Load	25	50	75	100	125	150	S.F.
Power Factor	24	38	49	57	62	64	65
Efficiency	72.8	82.2	85.4	86.1	86	84.6	83.5
Speed	896	892	889	884	880	873	883
Line amperes	7.35	7.94	8.82	10	11.53	13.34	9.94

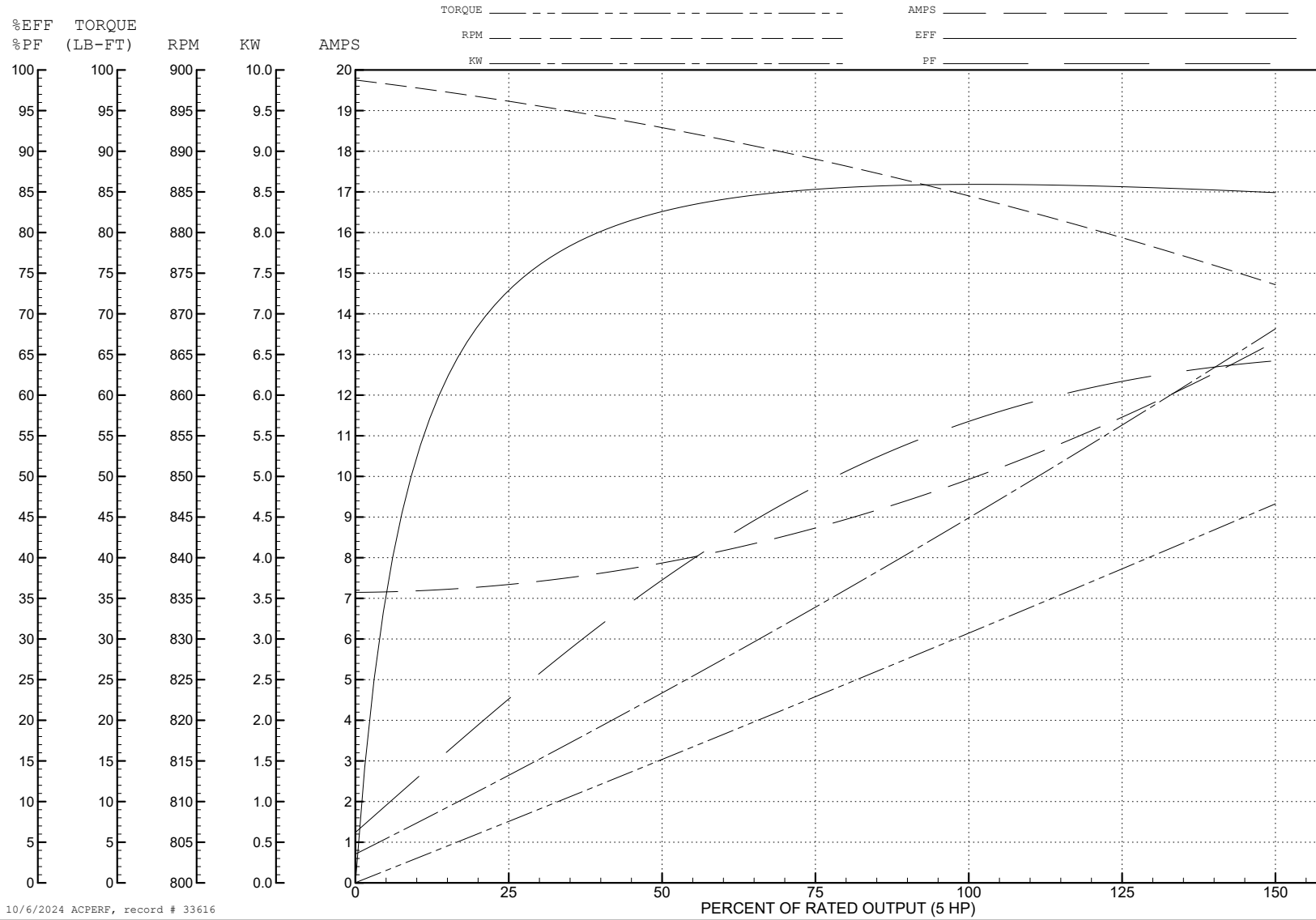
ABB Motors and Mechanical Inc.

WINDING # 10WGW441

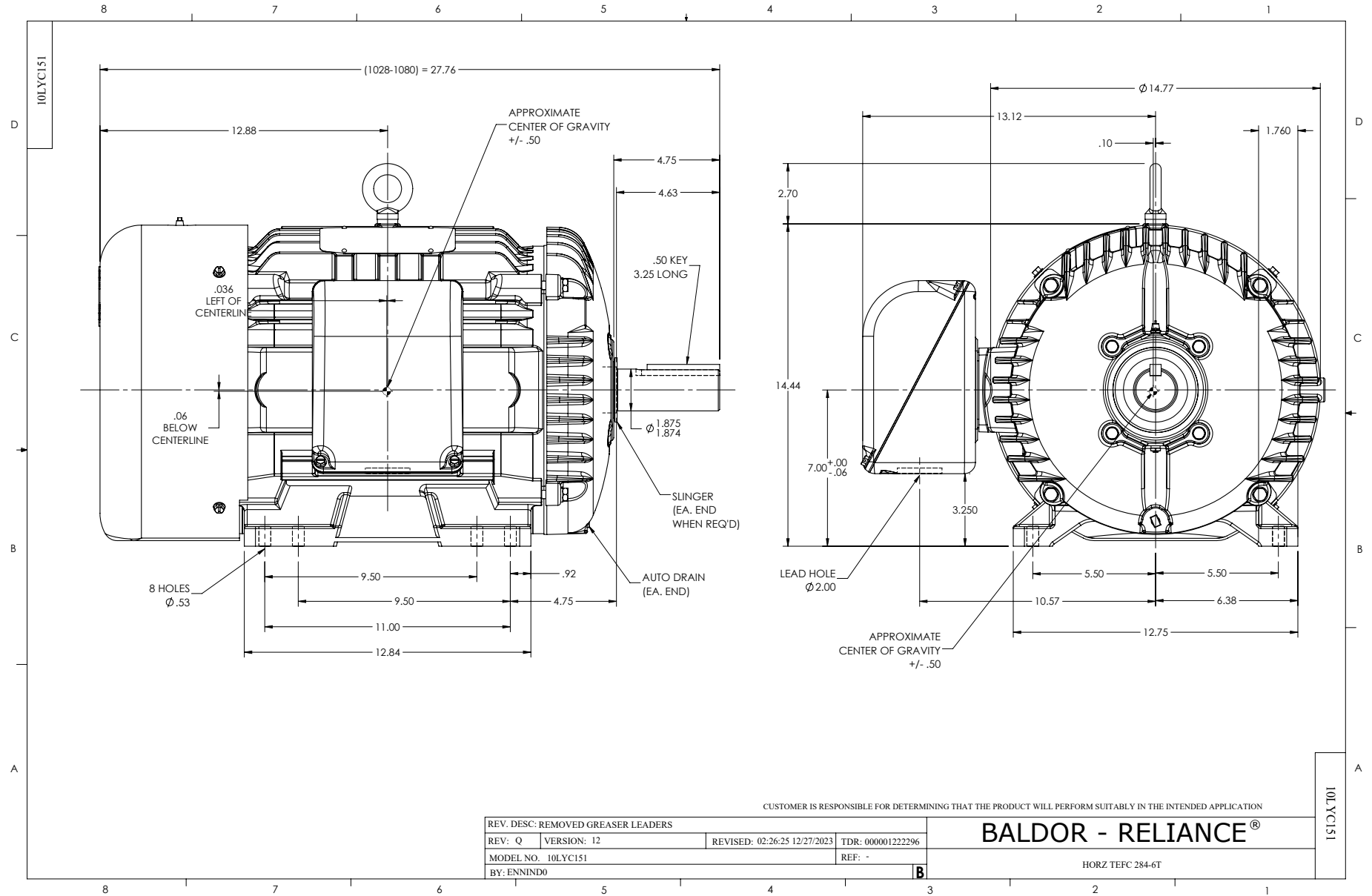
Typical performance - not guaranteed values.

5 HP 3 PH 60 HZ 884 RPM 460 V 1034M

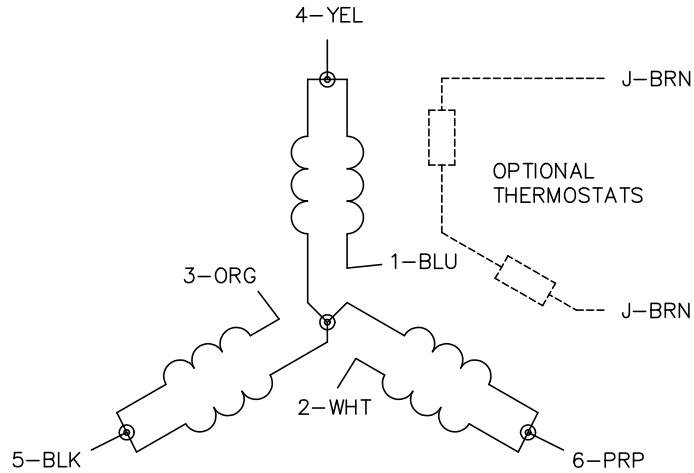
TORQUES (LB-FT): PO=45.2 PU=49.8 LR=71.3 LRA=42.2



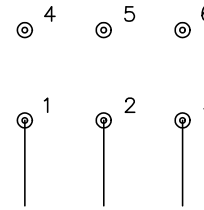
10/6/2024 ACPERF, record # 33616



CD0032

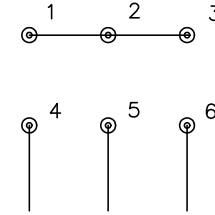


LOW SPEED
(1Y)



LINE

HIGH SPEED
(2Y)



LINE

NOTES:

1. INTERCHANGE ANY TWO LINE LEADS TO REVERSE ROTATION.
2. OPTIONAL THERMOSTATS ARE PROVIDED WHEN SPECIFIED.
3. ACTUAL NUMBER OF INTERNAL PARALLEL CIRCUITS MAY BE A MULTIPLE OF THOSE SHOWN ABOVE.
4. LEAD COLORS ARE OPTIONAL. LEADS MUST ALWAYS BE NUMBERED AS SHOWN.

CD0032

REV. DESC: REVISE TO SHOW OPTIONAL COLORS			
REV. LTR: E	BY: JLP	REVISED: 01/22/99 8:27	TDR: 0171435
CD0032		FILE: AAA00005145	MDL: -
		MTL: -	

BALDOR ELECTRIC Co.

3PH, SV, 6 LEADS, 2-SPEED 1-WINDING VARIABLE TORQUE