

BALDOR • RELIANCE

Customer information packet

M1761T

15/3.75HP, 1760/880RPM, 3PH, 60HZ, 254T

Class - None

Division - Not Applicable

Specifications

Enclosure	TEFC
Frame	254T
Frame Material	Iron
Frequency	60.00 Hz
Haz Area Class and Group	None
Haz Area Division	Not Applicable
Motor Letter Type	Three Phase
Output @ Frequency	3.750 HP @ 60 HZ 15.000 HP @ 60 HZ
Phase	3
Synchronous Speed @ Frequency	1800 RPM @ 60 HZ
Voltage @ Frequency	460.0 V @ 60 HZ
Agency Approvals	UR CSA
Ambient Temperature	40 °C
Auxiliary Box	NO AUXILLARY BOX
Auxiliary Box Lead Termination	None
Base Indicator	Rigid
Bearing Grease Type	Polyrex EM (-20F +300F)
Blower	None
Current @ Voltage	19.600 A @ 460.0 V
Design Code	B
Drip Cover	No Drip Cover
Duty Rating	CONT
Electrically Isolated Bearing	Not Electrically Isolated
Feedback Device	NO FEEDBACK
Front Face Code	Standard
Front Shaft Indicator	None
Heater Indicator	No Heater
High Voltage Full Load Amps	8.3 a
Insulation Class	F
Inverter Code	Not Inverter

Part detail

Revision	AT
Type	AC
Mech. spec.	09C101
Base	
Status	PRD/A
Elec. spec.	09WGX185
Layout	09LYC101
Eff. date	10-07-2024
CD Diagram	CD0032
Poles	04/08
Leads	6#12
Proprietary	False
Created date	01-01-0001

KVA Code	G
Lifting Lugs	Standard Lifting Lugs
Locked Bearing Indicator	Locked Bearing
Motor Lead Exit	Ko Box
Motor Lead Quantity/Wire Size	6 @ 12 AWG
Motor Lead Termination	Flying Leads
Motor Standards	NEMA
Motor Type	0934M
Mounting Arrangement	F1
Number of Poles	4 8
Overall Length	23.28 IN
Product Family	General Purpose
Pulley End Bearing Type	Ball
Pulley Face Code	Standard
Pulley Shaft Indicator	Standard
Rodent Screen	None
Service Factor	1.15
Shaft Diameter	1.625 IN
Shaft Extension Location	Pulley End
Shaft Ground Indicator	No Shaft Grounding
Shaft Rotation	Reversible
Shaft Slinger Indicator	Shaft Slinger
Speed	1760 rpm 880 rpm
Speed Code	2S-1W-VT
Starting Method	Direct on line
Thermal Device - Bearing	None
Thermal Device - Winding	None
Vibration Sensor Indicator	No Vibration Sensor
Winding Thermal 1	None
Winding Thermal 2	None

Nameplate

NP1256L									
CAT.NO.	M1761T								
SPEC.	09C101X185								
HP	15/3.75								
VOLTS	460								
AMP	19.6/8.3								
RPM	1760/880								
FRAME	254T		HZ	60		PH	3		
SER.F.	1.15	CODE	G	DES	B	CLASS	F		
NEMA-NOM-EFF		PF							
RATING	40C AMB-CONT								
CC									
DE	6309		ODE	6208					
ENCL	TEFC	SN							

Accessories

Part number	Description	Multiplier
09-1309	C FACE KIT	A8

AC Induction Motor Performance Data

Record # 36429

Typical performance - not guaranteed values

Winding: 09WGX185-R004		Type: 0934M		Enclosure: TEFC	
Nameplate Data			460 V, 60 Hz: High Speed Connection		
Rated Output (HP)	15/3.75	Full Load Torque	44.5 LB-FT		
Volts	460	Start Configuration	direct on line		
Full Load Amps	19.6/8.3	Breakdown Torque	144 LB-FT		
R.P.M.	1760/880	Pull-up Torque	46 LB-FT		
Hz	60 Phase	3	Locked-rotor Torque	82.5 LB-FT	
NEMA Design Code	B KVA Code	G	Starting Current	116 A	
Service Factor (S.F.)		1.15	No-load Current	9.29 A	
NEMA Nom. Eff.	0 Power Factor	0	Line-line Res. @ 25°C	0.852 Ω	
Rating - Duty		40C AMB-CONT	Temp. Rise @ Rated Load	84°C	
S.F. Amps			Temp. Rise @ S.F. Load	99°C	

Load Characteristics 460 V, 60 Hz, 15 HP

% of Rated Load	25	50	75	100	125	150	S.F.
Power Factor	42	64	76	82	85	87	84
Efficiency	82	88.2	89.8	90.1	89.7	89	89.9
Speed	1793	1786	1779	1771	1763	1754	1766
Line amperes	10.2	12.4	15.5	19.6	23	27.2	21.6

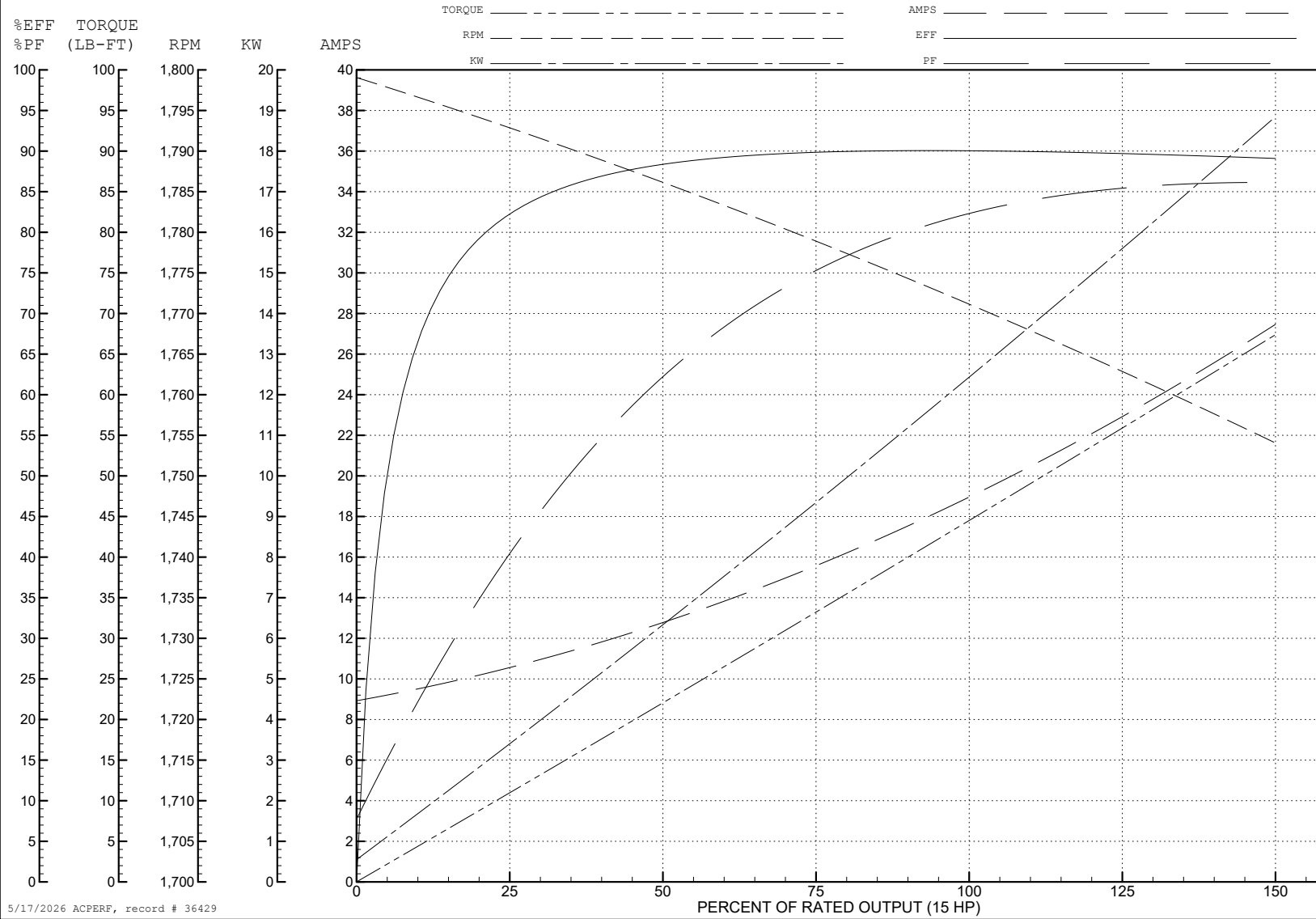
ABB Motors and Mechanical Inc.

WINDING # 09WGX185

Typical performance - not guaranteed values.

15 HP 3 PH 60 HZ 1771 RPM 460 V 0934M

TORQUES (LB-FT): PO=144 PU=46 LR=82.5 LRA=116



5/17/2026 ACPERF, record # 36429

AC Induction Motor Performance Data

Record # 36430

Typical performance - not guaranteed values

Winding: 09WGX185-R004		Type: 0934M	Enclosure: TEFC		
Nameplate Data		460 V, 60 Hz: Low Speed Connection			
Rated Output (HP)	15/3.75	Full Load Torque	22.2 LB-FT		
Volts	460	Start Configuration	direct on line		
Full Load Amps	19.6/8.3	Breakdown Torque	75.1 LB-FT		
R.P.M.	1760/880	Pull-up Torque	25 LB-FT		
Hz	60 Phase	3	Locked-rotor Torque	49.8 LB-FT	
NEMA Design Code	B	KVA Code	G	Starting Current	34.2 A
Service Factor (S.F.)		1.15	No-load Current	7.09 A	
NEMA Nom. Eff.	0	Power Factor	0	Line-line Res. @ 25°C	3.41 Ω
Rating - Duty		40C AMB-CONT	Temp. Rise @ Rated Load	47°C	
S.F. Amps			Temp. Rise @ S.F. Load	52°C	

Load Characteristics 460 V, 60 Hz, 3.75 HP

% of Rated Load	25	50	75	100	125	150	S.F.
Power Factor	20	32	42	51	58	63	55
Efficiency	62.1	75.3	80.2	82.4	83.3	83.4	82.9
Speed	896	893	889	885	881	877	883
Line amperes	7.16	7.41	7.81	8.3	9.1	9.95	8.81

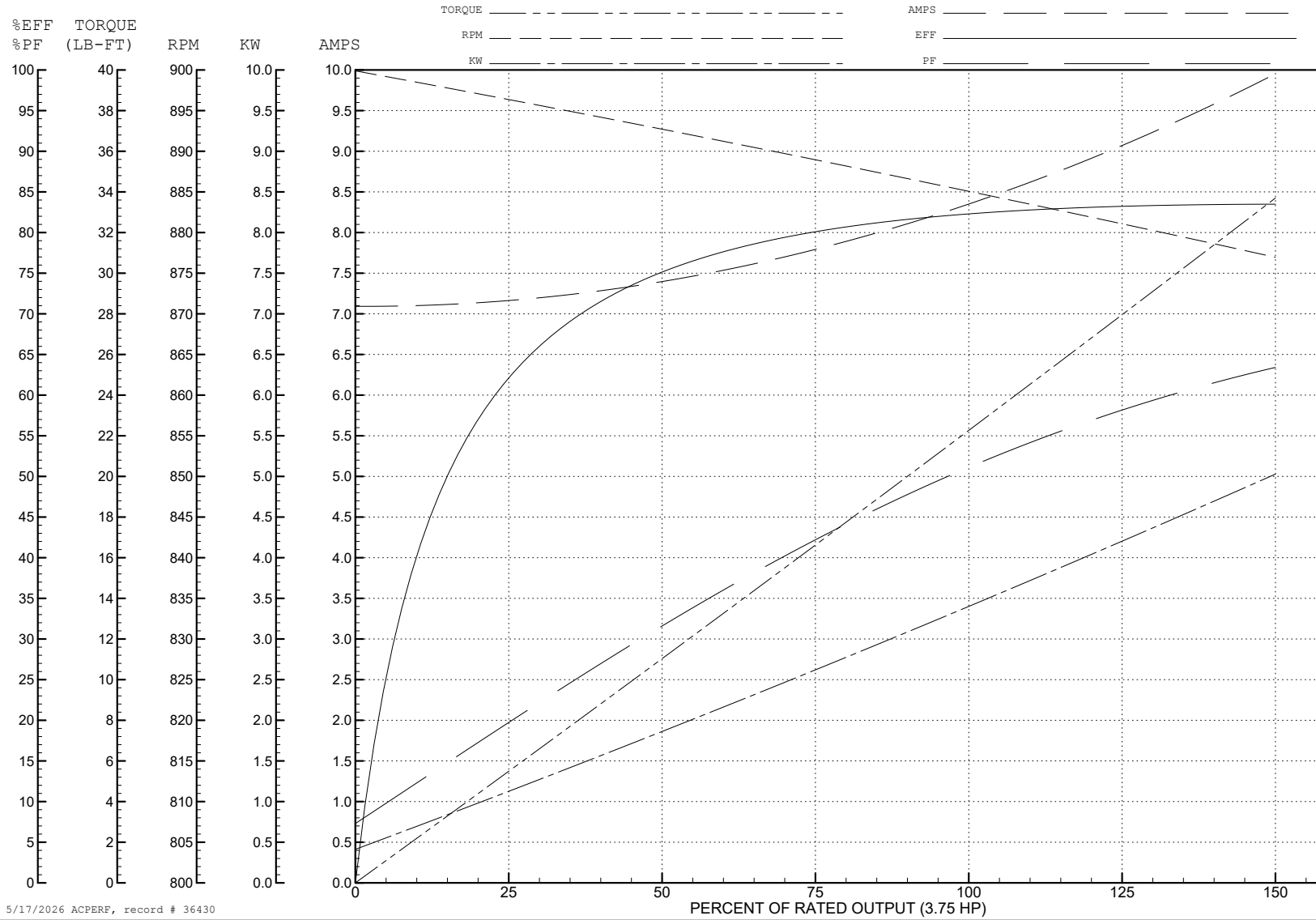
ABB Motors and Mechanical Inc.

WINDING # 09WGX185

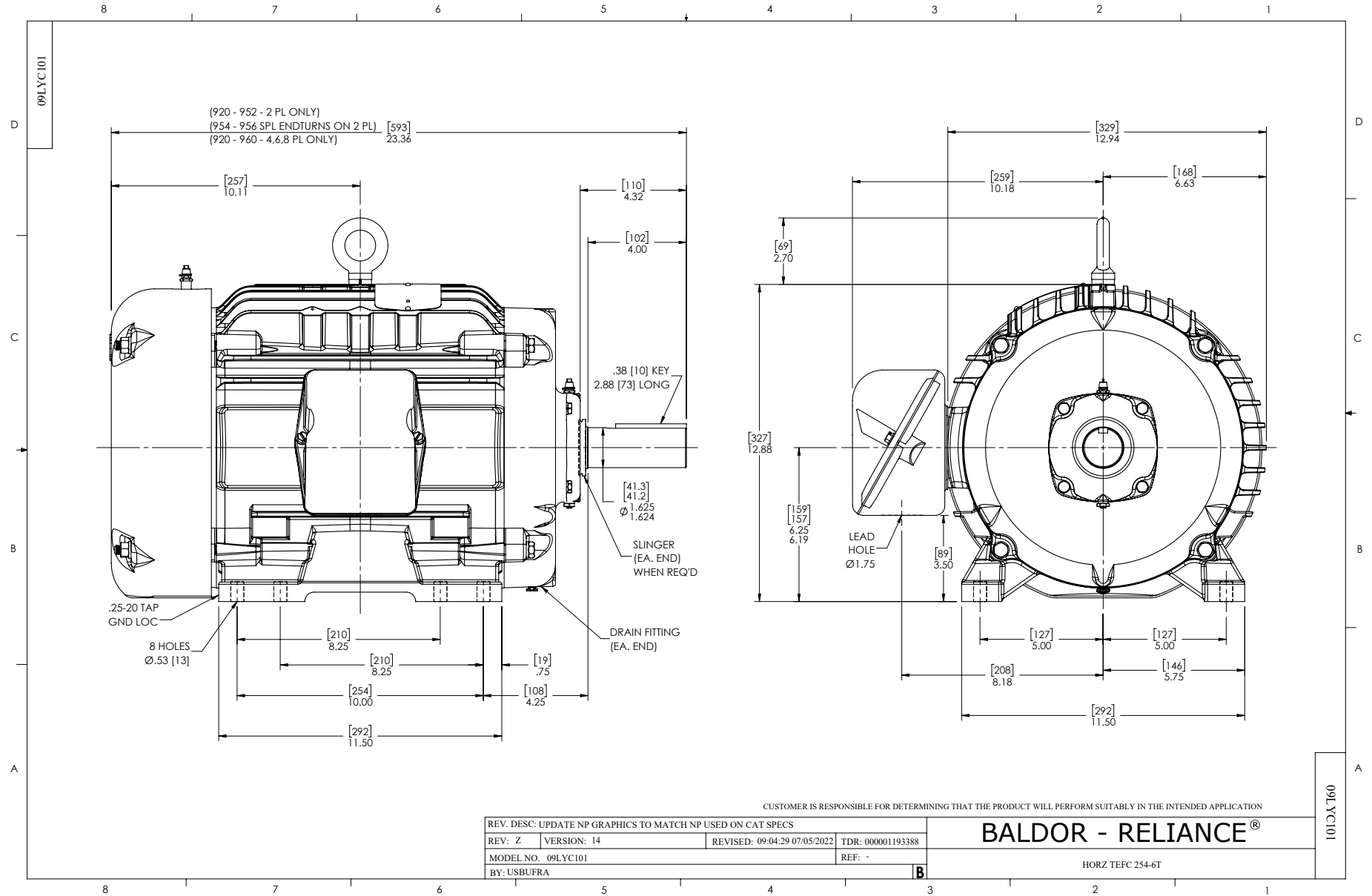
3.75 HP 3 PH 60 HZ 885 RPM 460 V 0934M

Typical performance - not guaranteed values.

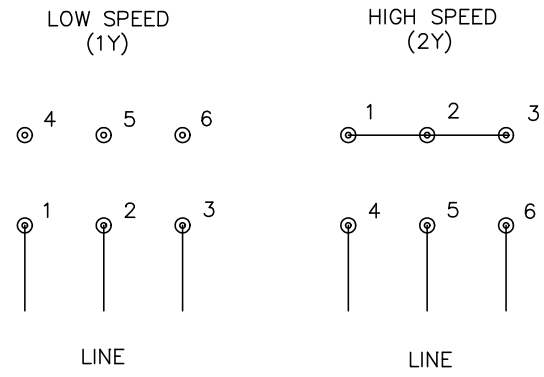
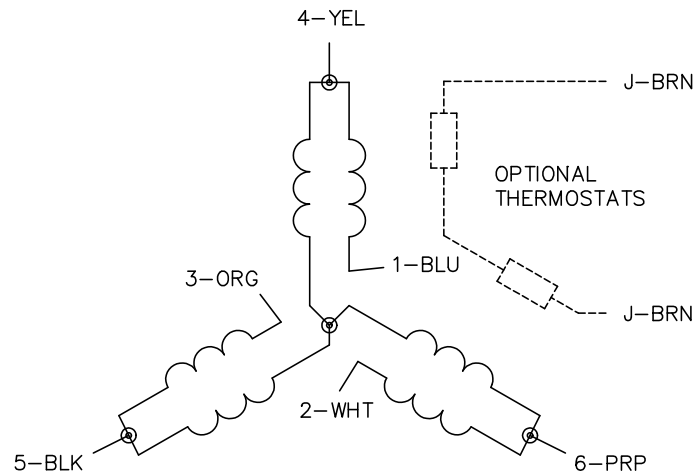
TORQUES (LB-FT): PO=75.1 PU=25 LR=49.8 LRA=34.2



5/17/2026 ACPERF, record # 36430



CD0032



NOTES:

1. INTERCHANGE ANY TWO LINE LEADS TO REVERSE ROTATION.
2. OPTIONAL THERMOSTATS ARE PROVIDED WHEN SPECIFIED.
3. ACTUAL NUMBER OF INTERNAL PARALLEL CIRCUITS MAY BE A MULTIPLE OF THOSE SHOWN ABOVE.
4. LEAD COLORS ARE OPTIONAL. LEADS MUST ALWAYS BE NUMBERED AS SHOWN.

CD0032

REV. DESC: REVISE TO SHOW OPTIONAL COLORS			
REV. LTR: E	BY: JLP	REVISED: 01/22/99 8:27	TDR: 0171435
CD0032		FILE: AAA00005145	MDL: -
		MTL: -	

BALDOR ELECTRIC Co.

3PH, SV, 6 LEADS, 2-SPEED 1-WINDING VARIABLE TORQUE