

BALDOR • RELIANCE

Customer information packet

M1759T

7.5/1.9HP, 1745/870RPM, 3PH, 60HZ, 213T, 3742

Class - None

Division - Not Applicable

Specifications

Enclosure	TEFC
Frame	213T
Frame Material	Steel
Frequency	60.00 Hz
Haz Area Class and Group	None
Haz Area Division	Not Applicable
Motor Letter Type	Three Phase
Output @ Frequency	7.500 HP @ 60 HZ 1.900 HP @ 60 HZ
Phase	3
Synchronous Speed @ Frequency	1800 RPM @ 60 HZ
Voltage @ Frequency	460.0 V @ 60 HZ
Agency Approvals	UR CSA
Ambient Temperature	40 °C
Auxillary Box	No Auxillary Box
Auxillary Box Lead Termination	None
Base Indicator	Rigid
Bearing Grease Type	Polyrex EM (-20F +300F)
Blower	None
Current @ Voltage	9.200 A @ 460.0 V
Design Code	A
Drip Cover	No Drip Cover
Duty Rating	CONT
Electrically Isolated Bearing	Not Electrically Isolated
Feedback Device	NO FEEDBACK
Front Shaft Indicator	None
Heater Indicator	No Heater
High Voltage Full Load Amps	3.5 a
Insulation Class	F
Inverter Code	Not Inverter
KVA Code	L

Part detail

Revision	E
Type	AC
Mech. spec.	37T397
Base	
Status	PRD/A
Elec. spec.	37WGZ652
Layout	37LYT397
Eff. date	05-14-2024
CD Diagram	CD0032
Poles	04/08
Leads	6#14
Proprietary	False
Created date	12-10-2020

Lifting Lugs	Standard Lifting Lugs
Locked Bearing Indicator	No Locked Bearing
Motor Lead Quantity/Wire Size	6 @ 14 AWG
Motor Lead Termination	Flying Leads
Motor Standards	NEMA
Motor Type	3742M
Mounting Arrangement	F1
Number of Poles	4 8
Overall Length	19.01 IN
Product Family	General Purpose
Pulley End Bearing Type	Ball
Pulley Face Code	Standard
Pulley Shaft Indicator	Standard
Rodent Screen	None
Service Factor	1.15
Shaft Diameter	1.375 IN
Shaft Ground Indicator	No Shaft Grounding
Shaft Rotation	Reversible
Shaft Slinger Indicator	No Slinger
Speed	1745 rpm 870 rpm
Speed Code	2S-1W-VT
Starting Method	Direct on line
Thermal Device - Bearing	None
Thermal Device - Winding	None
Vibration Sensor Indicator	No Vibration Sensor
Winding Thermal 1	None
Winding Thermal 2	None

Nameplate

NP1256L									
CAT.NO.	M1759T								
SPEC.	37T397Z652G1								
HP	7.5/1.9								
VOLTS	460								
AMP	9.2/3.5								
RPM	1745/870								
FRAME	213T		HZ	60		PH	3		
SER.F.	1.15	CODE	L	DES	A	CLASS	F		
NEMA-NOM-EFF		PF							
RATING	40C AMB-CONT								
CC									
DE	6307		ODE	6206					
ENCL	TEFC	SN							

Accessories

Part number	Description	Multiplier
37-3301	C FACE KIT	P1

AC Induction Motor Performance Data

Record # 85763

Typical performance - not guaranteed values

Winding: 37WGZ652-R001			Type: 3742M	Enclosure: TEFC	
Nameplate Data			460 V, 60 Hz: High Voltage, High Speed Connection		
Rated Output (HP)	7.5/1.9		Full Load Torque	22.48 LB-FT	
Volts	460		Start Configuration	direct on line	
Full Load Amps	9.2/3.5		Breakdown Torque	76.59 LB-FT	
R.P.M.	1745/870		Pull-up Torque	45.72 LB-FT	
Hz	60 Phase	3	Locked-rotor Torque	57.14 LB-FT	
NEMA Design Code	A KVA Code	L	Starting Current	91.28 A	
Service Factor (S.F.)	1.15		No-load Current	3.49 A	
NEMA Nom. Eff.	0 Power Factor	0	Line-line Res. @ 25°C	2.27 Ω	
Rating - Duty	40C AMB-CONT		Temp. Rise @ Rated Load	59°C	
S.F. Amps			Temp. Rise @ S.F. Load	75°C	
			Locked-rotor Power Factor	53.5	
			Rotor inertia	1.03 lb-ft ²	

Load Characteristics 460 V, 60 Hz, 7.5 HP

% of Rated Load	25	50	75	100	125	150	S.F.
Power Factor	50	73	83	87	89	91	85
Efficiency	86.2	89.1	88.2	87	85.1	82.8	86.8
Speed	1787	1774	1759	1745	1729	1710	1760
Line amperes	4.03	5.39	7.11	9.18	11.49	14.02	10.8

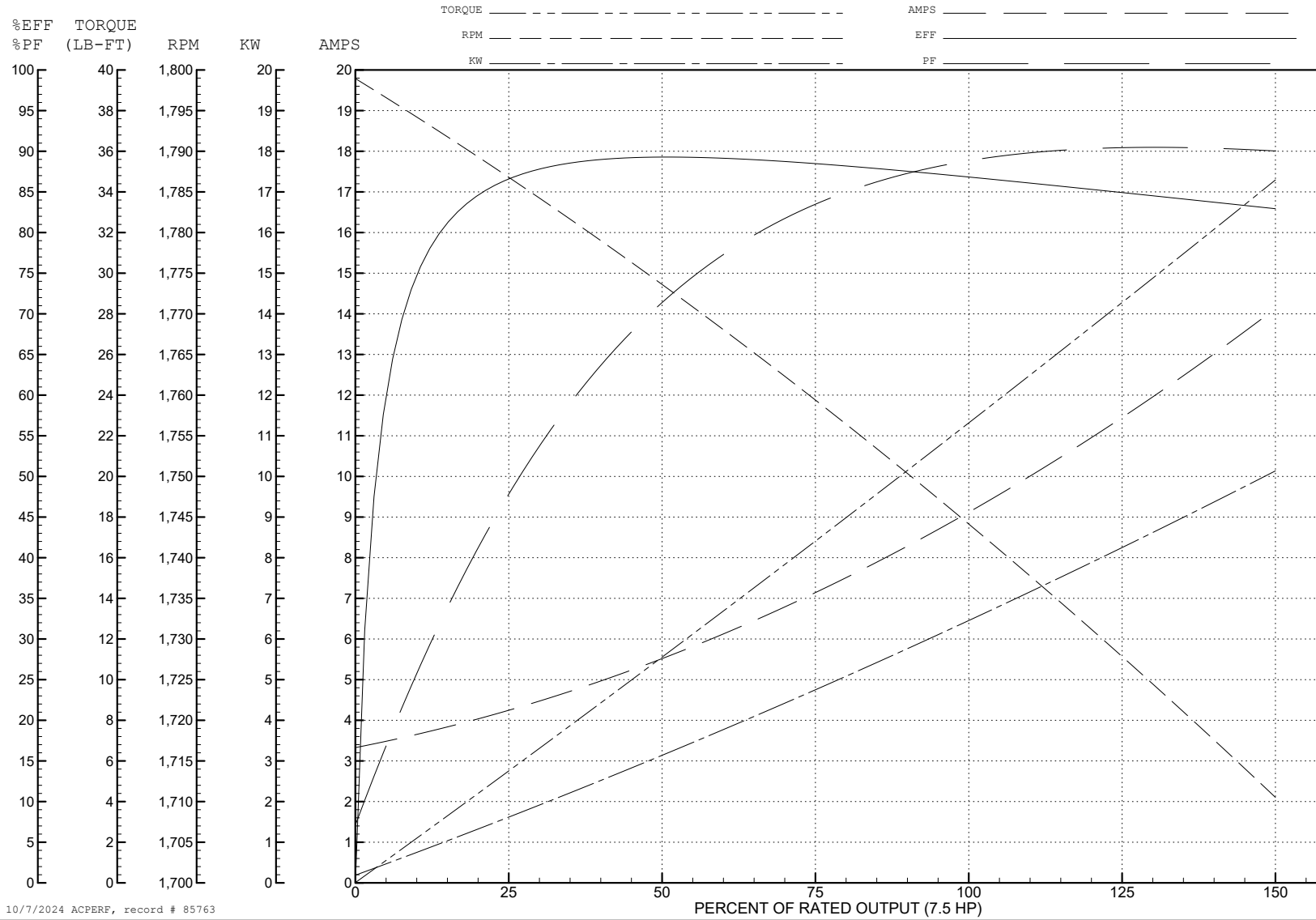
ABB Motors and Mechanical Inc.

WINDING # 37WGZ652

Typical performance - not guaranteed values.

7.5 HP 3 PH 60 HZ 1745 RPM 460 V 3742M

TORQUES (LB-FT): PO=76.59 PU=45.72 LR=57.14 LRA=91.28



10/7/2024 ACPERF, record # 85763

AC Induction Motor Performance Data

Record # 85765

Typical performance - not guaranteed values

Winding: 37WGZ652-R001		Type: 3742M		Enclosure: TEFC	
Nameplate Data			460 V, 60 Hz: Low Speed Connection		
Rated Output (HP)	7.5/1.9		Full Load Torque	11.5 LB-FT	
Volts	460		Start Configuration	direct on line	
Full Load Amps	9.2/3.5		Breakdown Torque	33.6 LB-FT	
R.P.M.	1745/870		Pull-up Torque	20.79 LB-FT	
Hz	60 Phase	3	Locked-rotor Torque	19.5 LB-FT	
NEMA Design Code	A KVA Code	L	Starting Current	14.8 A	
Service Factor (S.F.)	1.15		No-load Current	2.69 A	
NEMA Nom. Eff.	0 Power Factor	0	Line-line Res. @ 25°C	9.06 Ω	
Rating - Duty	40C AMB-CONT		Temp. Rise @ Rated Load		
			Locked-rotor Power Factor	48.2	
			Rotor inertia	1.03 lb-ft ²	

Load Characteristics 460 V, 60 Hz, 1.9 HP

% of Rated Load	25	50	75	100	125	150	S.F.
Power Factor	24	39	52	61	68	73	60
Efficiency	68.7	79.1	82.2	82.8	82.3	80.9	82.5
Speed	892.2	884.7	876.6	867.8	858	846.9	876
Line amperes	2.73	2.89	3.15	3.51	3.97	4.52	4.1

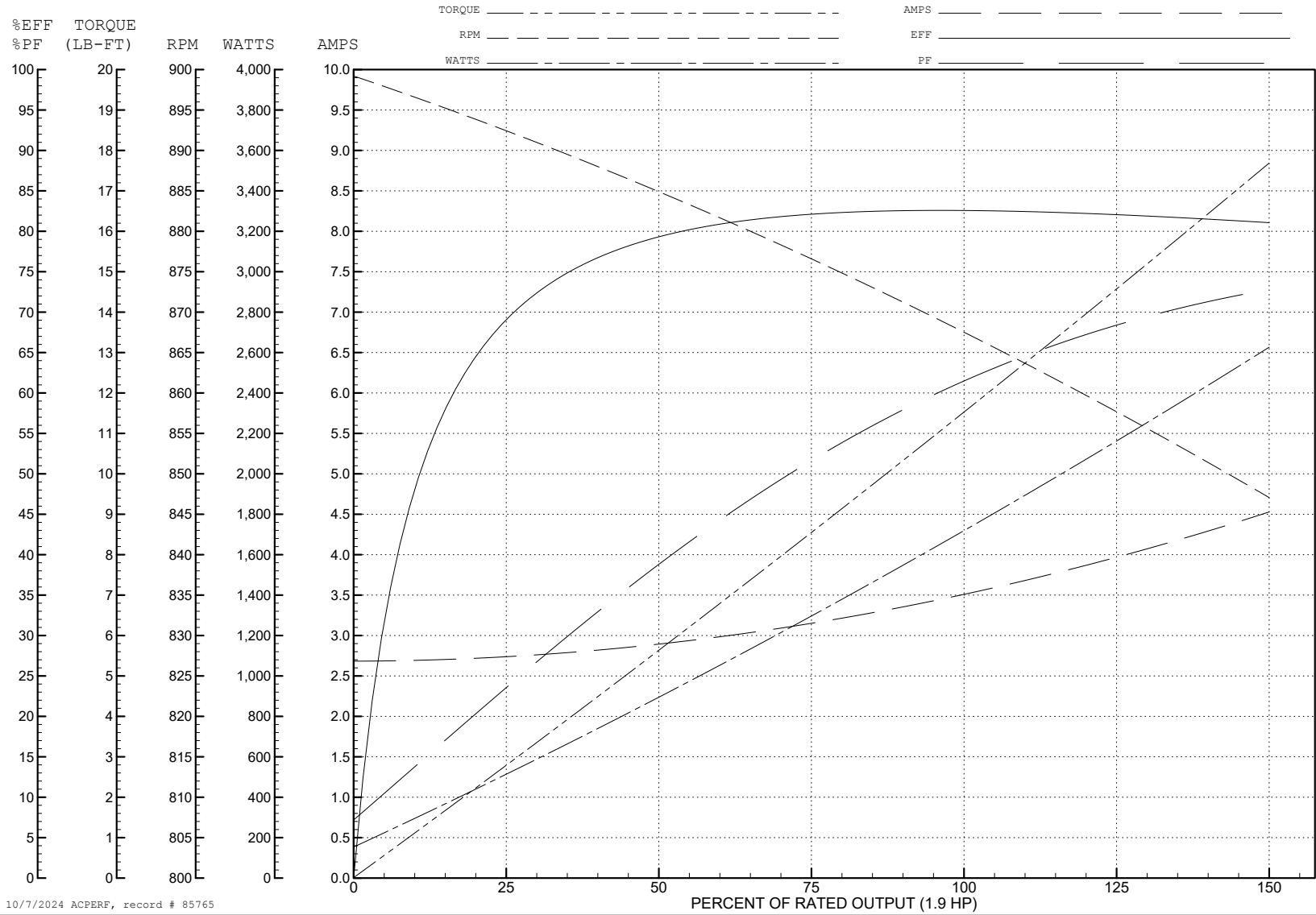
ABB Motors and Mechanical Inc.

WINDING # 37WGZ652

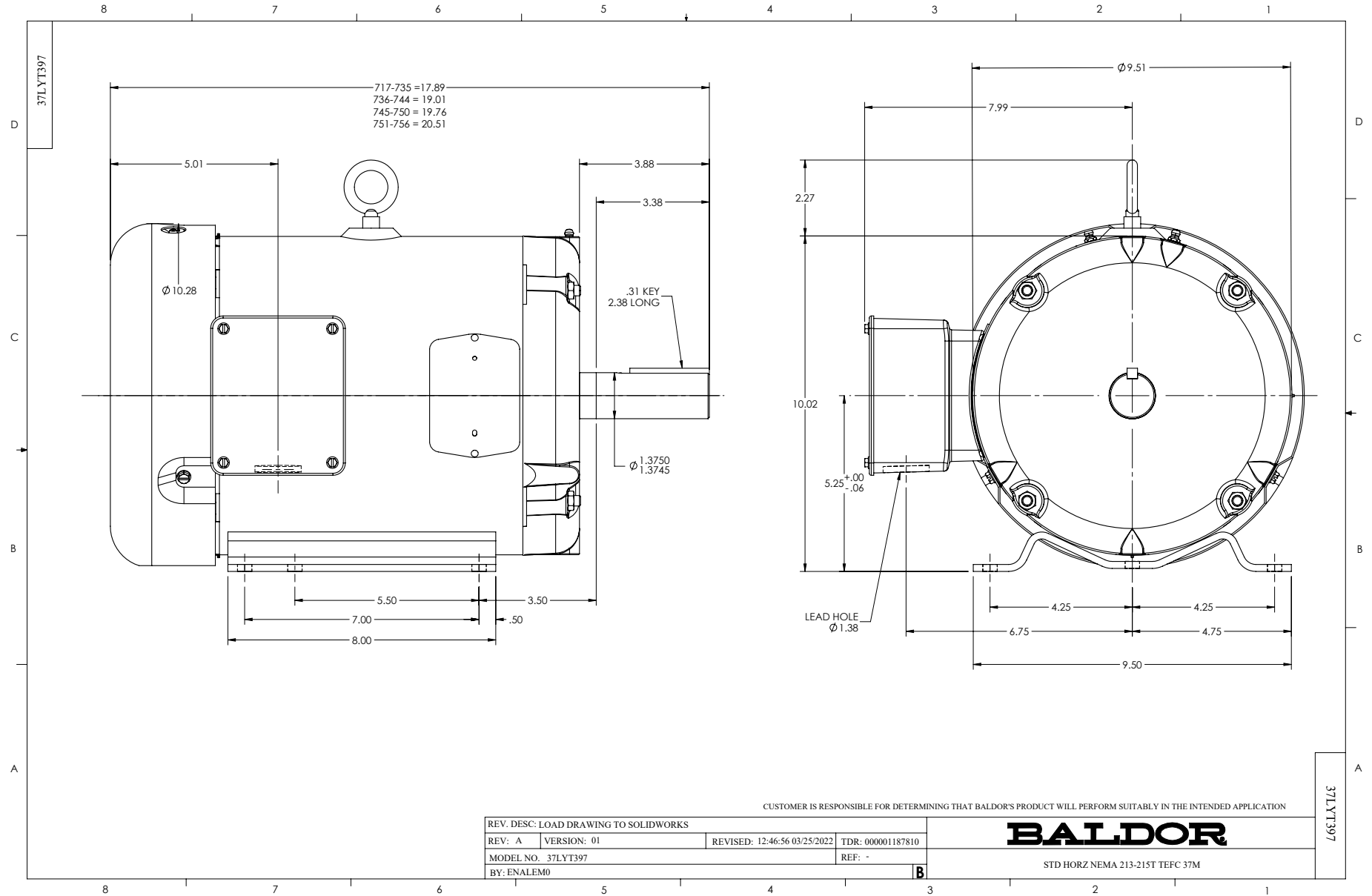
1.9 HP 3 PH 60 HZ 867.8 RPM 460 V 3742M

Typical performance - not guaranteed values.

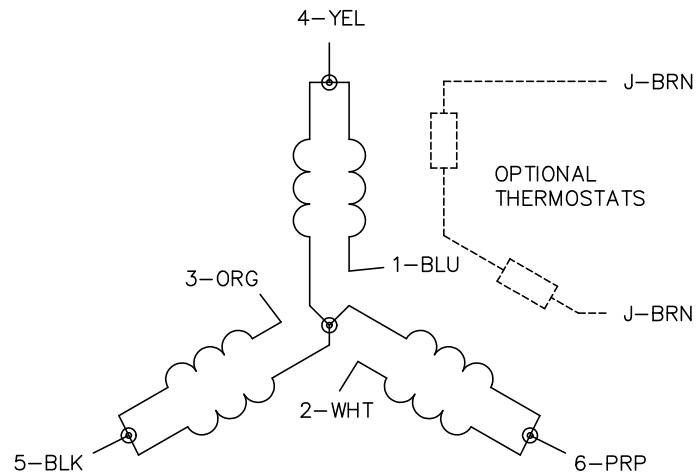
TORQUES (LB-FT): PO=33.6 PU=20.79 LR=19.5 LRA=14.8



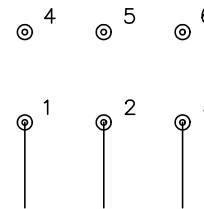
10/7/2024 ACPERF, record # 85765



CD0032

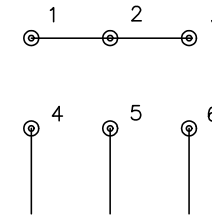


LOW SPEED
(1Y)



LINE

HIGH SPEED
(2Y)



LINE

NOTES:

1. INTERCHANGE ANY TWO LINE LEADS TO REVERSE ROTATION.
2. OPTIONAL THERMOSTATS ARE PROVIDED WHEN SPECIFIED.
3. ACTUAL NUMBER OF INTERNAL PARALLEL CIRCUITS MAY BE A MULTIPLE OF THOSE SHOWN ABOVE.
4. LEAD COLORS ARE OPTIONAL. LEADS MUST ALWAYS BE NUMBERED AS SHOWN.

CD0032

REV. DESC: REVISE TO SHOW OPTIONAL COLORS			
REV. LTR: E	BY: JLP	REVISED: 01/22/99 8:27	TDR: 0171435
CD0032		FILE: AAA00005145	MDL: -
		MTL: -	

BALDOR ELECTRIC Co.

3PH, SV, 6 LEADS, 2-SPEED 1-WINDING VARIABLE TORQUE