

BALDOR • RELIANCE

Customer information packet

M1726T

10/4.4HP, 1760/1170RPM, 3PH, 60HZ, 254T

Class - None

Division - Not Applicable

Specifications

| | |
|--------------------------------|---------------------------------------|
| Enclosure | TEFC |
| Frame | 254T |
| Frame Material | Iron |
| Frequency | 60.00 Hz |
| Haz Area Class and Group | None |
| Haz Area Division | Not Applicable |
| Motor Letter Type | Three Phase |
| Output @ Frequency | 4.400 HP @ 60 HZ 10.000 HP @ 60 HZ |
| Phase | 3 |
| Synchronous Speed @ Frequency | 1200 RPM @ 60 HZ |
| Voltage @ Frequency | 460.0 V @ 60 HZ |
| Agency Approvals | UR CSA |
| Ambient Temperature | 40 °C |
| Auxillary Box | No Auxillary Box |
| Auxillary Box Lead Termination | None |
| Base Indicator | Rigid |
| Bearing Grease Type | Polyrex EM (-20F +300F) |
| Blower | None |
| Current @ Voltage | 12.500 A @ 460.0 V |
| Design Code | B |
| Drip Cover | No Drip Cover |
| Duty Rating | CONT |
| Electrically Isolated Bearing | Not Electrically Isolated |
| Feedback Device | NO FEEDBACK |
| Front Face Code | Standard |
| Front Shaft Indicator | None |
| Heater Indicator | No Heater |
| High Voltage Full Load Amps | 6.7 a |
| Insulation Class | F |
| Inverter Code | Not Inverter |

Part detail

| | |
|--------------|------------|
| Revision | AD |
| Type | AC |
| Mech. spec. | 07H203 |
| Base | |
| Status | PRD/A |
| Elec. spec. | 07WGX115 |
| Layout | 07LYH203 |
| Eff. date | 05-06-2024 |
| CD Diagram | CD0013 |
| Poles | 04/06 |
| Leads | 6#14 |
| Proprietary | False |
| Created date | 01-01-0001 |

| | |
|--------------------------------------|-----------------------|
| KVA Code | H |
| Lifting Lugs | Standard Lifting Lugs |
| Locked Bearing Indicator | No Locked Bearing |
| Motor Lead Exit | Ko Box |
| Motor Lead Quantity/Wire Size | 6 @ 14 AWG |
| Motor Lead Termination | Flying Leads |
| Motor Standards | NEMA |
| Motor Type | 0750M |
| Mounting Arrangement | F1 |
| Number of Poles | 4 6 |
| Overall Length | 21.07 IN |
| Product Family | General Purpose |
| Pulley End Bearing Type | Ball |
| Pulley Face Code | Standard |
| Pulley Shaft Indicator | Standard |
| Rodent Screen | None |
| Service Factor | 1.15 |
| Shaft Diameter | 1.625 IN |
| Shaft Extension Location | Pulley End |
| Shaft Ground Indicator | No Shaft Grounding |
| Shaft Rotation | Reversible |
| Shaft Slinger Indicator | No Slinger |
| Speed | 1170 rpm 1760 rpm |
| Speed Code | 2S-2W-VT |
| Starting Method | Direct on line |
| Thermal Device - Bearing | None |
| Thermal Device - Winding | None |
| Vibration Sensor Indicator | No Vibration Sensor |
| Winding Thermal 1 | None |
| Winding Thermal 2 | None |

Nameplate

| NP1256L | | | | | | | | | |
|---------------------|--------------|-------------|------------|------------|---|--------------|---|--|--|
| CAT.NO. | M1726T | | | | | | | | |
| SPEC. | 07H203X115 | | | | | | | | |
| HP | 10/4.4 | | | | | | | | |
| VOLTS | 460 | | | | | | | | |
| AMP | 12.5/6.7 | | | | | | | | |
| RPM | 1760/1170 | | | | | | | | |
| FRAME | 254T | | HZ | 60 | | PH | 3 | | |
| SER.F. | 1.15 | CODE | H | DES | B | CLASS | F | | |
| NEMA-NOM-EFF | | PF | | | | | | | |
| RATING | 40C AMB-CONT | | | | | | | | |
| CC | | | | | | | | | |
| DE | 6309 | | ODE | 6307 | | | | | |
| ENCL | TEFC | SN | | | | | | | |

Accessories

| Part number | Description | Multiplier |
|--------------------|--------------------|-------------------|
| 37-1302 | C FACE KIT | A8 |

AC Induction Motor Performance Data

Record # 36487

Typical performance - not guaranteed values

| Winding: 07WGX115-R002 | | Type: 0750M | | Enclosure: TEFC | |
|-------------------------------|-----------------------|----------------------------|------------------------------------------------|------------------------|--|
| Nameplate Data | | | 460 V, 60 Hz: High Speed Connection | | |
| Rated Output (HP) | 10/4.4 | Full Load Torque | 30 LB-FT | | |
| Volts | 460 | Start Configuration | direct on line | | |
| Full Load Amps | 12.5/6.7 | Breakdown Torque | 88 LB-FT | | |
| R.P.M. | 1760/1170 | Pull-up Torque | 32 LB-FT | | |
| Hz | 60 Phase | 3 | Locked-rotor Torque | 61 LB-FT | |
| NEMA Design Code | B KVA Code | H | Starting Current | 85 A | |
| Service Factor (S.F.) | | 1.15 | No-load Current | 5.1 A | |
| NEMA Nom. Eff. | 0 Power Factor | 0 | Line-line Res. @ 25°C | 1.47 Ω | |
| Rating - Duty | | 40C AMB-CONT | Temp. Rise @ Rated Load | 85°C | |
| S.F. Amps | | | Temp. Rise @ S.F. Load | 105°C | |

Load Characteristics 460 V, 60 Hz, 10 HP

| % of Rated Load | 25 | 50 | 75 | 100 | 125 | 150 | S.F. |
|------------------------|-----------|-----------|-----------|------------|------------|------------|-------------|
| Power Factor | 51 | 74 | 81 | 87 | 87 | 83 | 87 |
| Efficiency | 80.2 | 86.4 | 87.4 | 86.7 | 85.2 | 82.6 | 85.8 |
| Speed | 1789 | 1779 | 1767 | 1756 | 1742 | 1722 | 1748 |
| Line amperes | 5.8 | 7.4 | 10 | 12.5 | 15.8 | 20.2 | 14.5 |

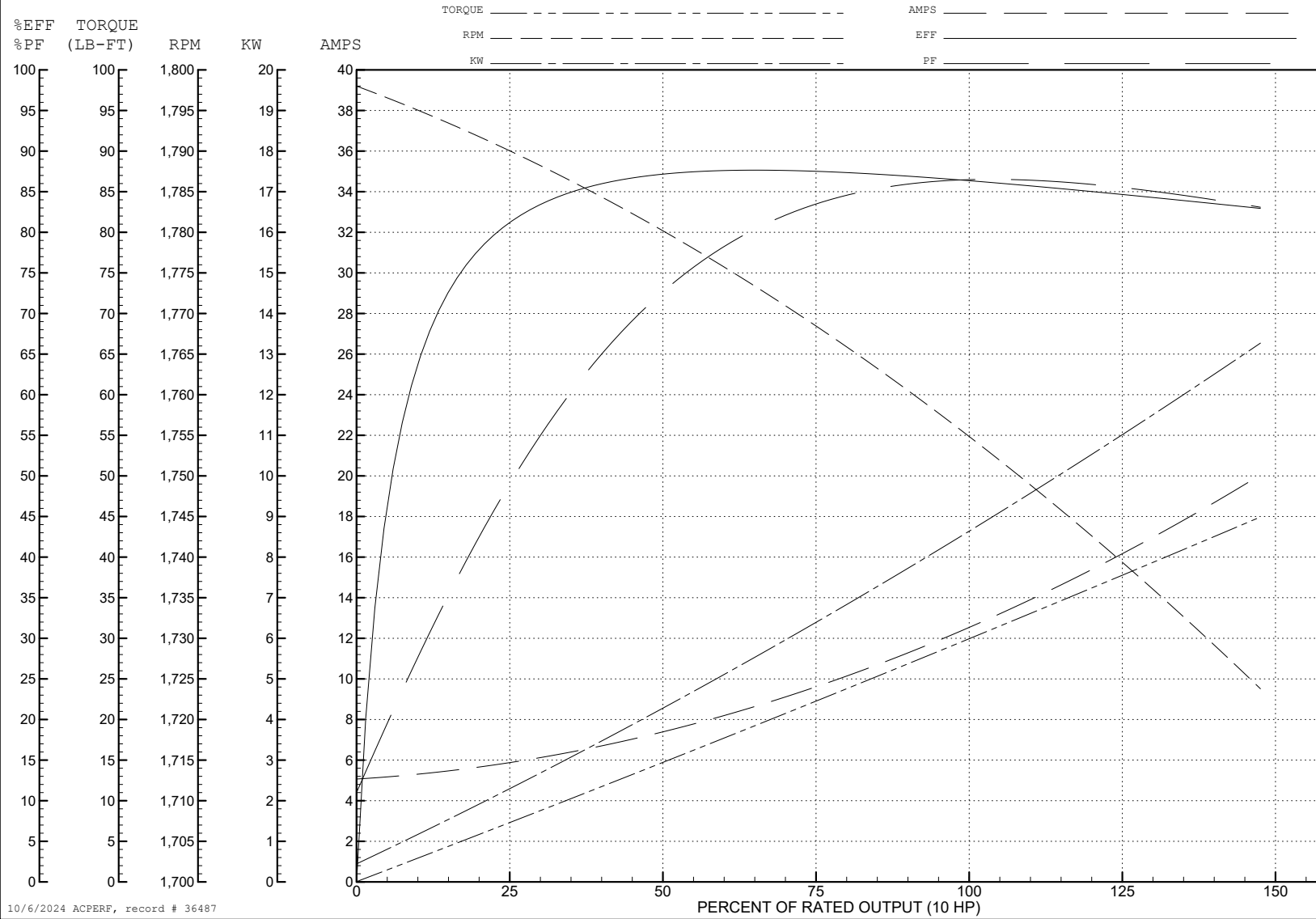
ABB Motors and Mechanical Inc.

WINDING # 07WGX115

Typical performance - not guaranteed values.

10 HP 3 PH 60 HZ 1756 RPM 460 V 0750M

TORQUES (LB-FT): PO=88 PU=32 LR=61 LRA=85



10/6/2024 ACPERF, record # 36487

AC Induction Motor Performance Data

Record # 36488

Typical performance - not guaranteed values

| Winding: 07WGX115-R002 | | Type: 0750M | Enclosure: TEFC |
|------------------------|----------------|-----------------------------------------------|-----------------|
| Nameplate Data | | 460 V, 60 Hz: Low Speed Connection | |
| Rated Output (HP) | 10/4.4 | Full Load Torque | 19.3 LB-FT |
| Volts | 460 | Start Configuration | direct on line |
| Full Load Amps | 12.5/6.7 | Breakdown Torque | 58 LB-FT |
| R.P.M. | 1760/1170 | Pull-up Torque | 39 LB-FT |
| Hz | 60 Phase | Locked-rotor Torque | 48 LB-FT |
| NEMA Design Code | B KVA Code | Starting Current | 39 A |
| Service Factor (S.F.) | 1.15 | No-load Current | 3.9 A |
| NEMA Nom. Eff. | 0 Power Factor | Line-line Res. @ 25°C | 4.26 Ω |
| Rating - Duty | 40C AMB-CONT | Temp. Rise @ Rated Load | 64°C |
| S.F. Amps | | Temp. Rise @ S.F. Load | 76°C |

Load Characteristics 460 V, 60 Hz, 4.4 HP

| % of Rated Load | 25 | 50 | 75 | 100 | 125 | 150 | S.F. |
|-----------------|------|------|------|------|------|------|------|
| Power Factor | 33 | 54 | 68 | 73 | 76 | 77 | 75 |
| Efficiency | 74 | 80.9 | 83.1 | 82.9 | 81.4 | 79.6 | 82 |
| Speed | 1193 | 1187 | 1181 | 1172 | 1163 | 1152 | 1167 |
| Line amperes | 4.2 | 4.7 | 5.4 | 6.7 | 8.1 | 9.7 | 7.54 |

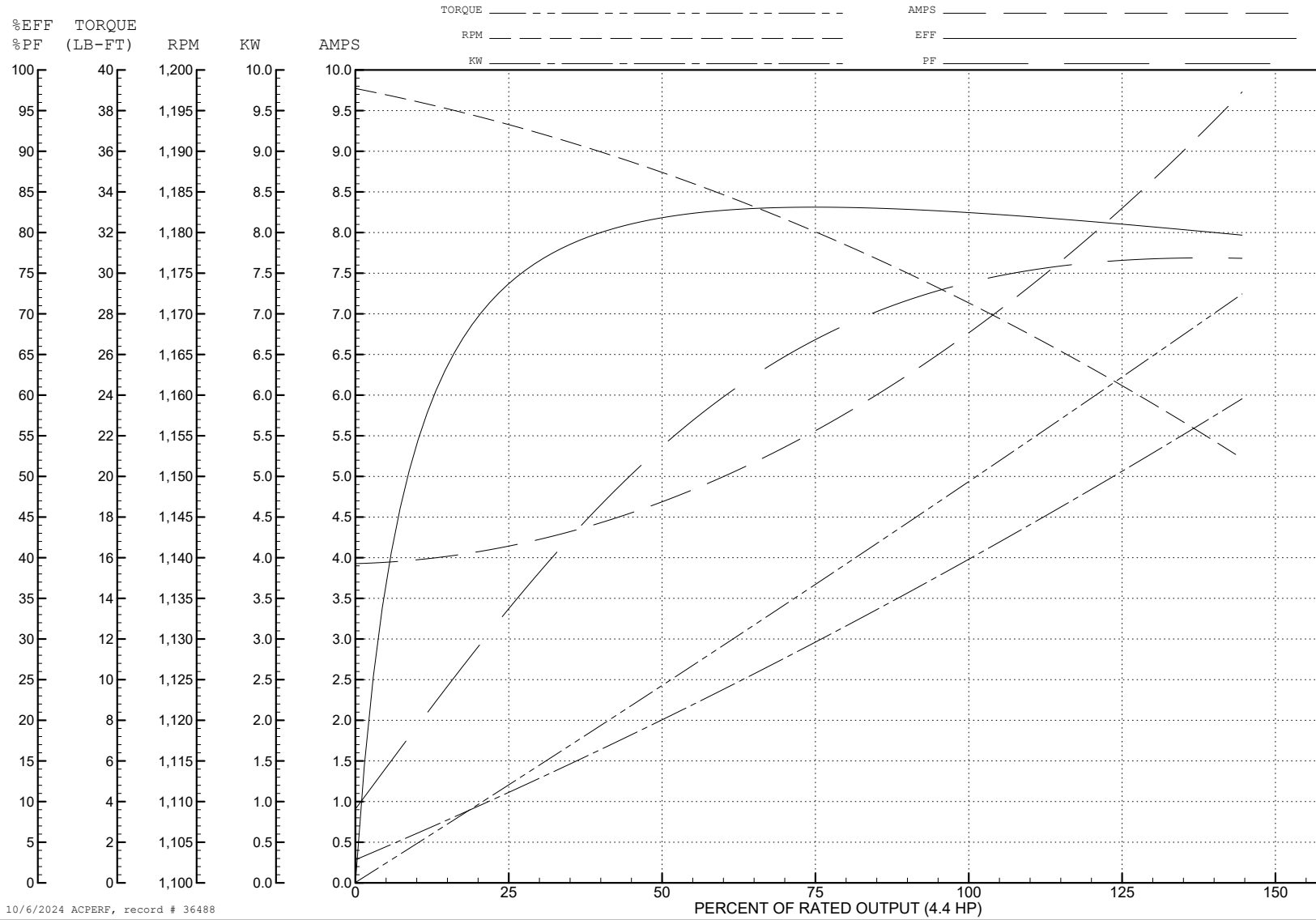
ABB Motors and Mechanical Inc.

WINDING # 07WGX115

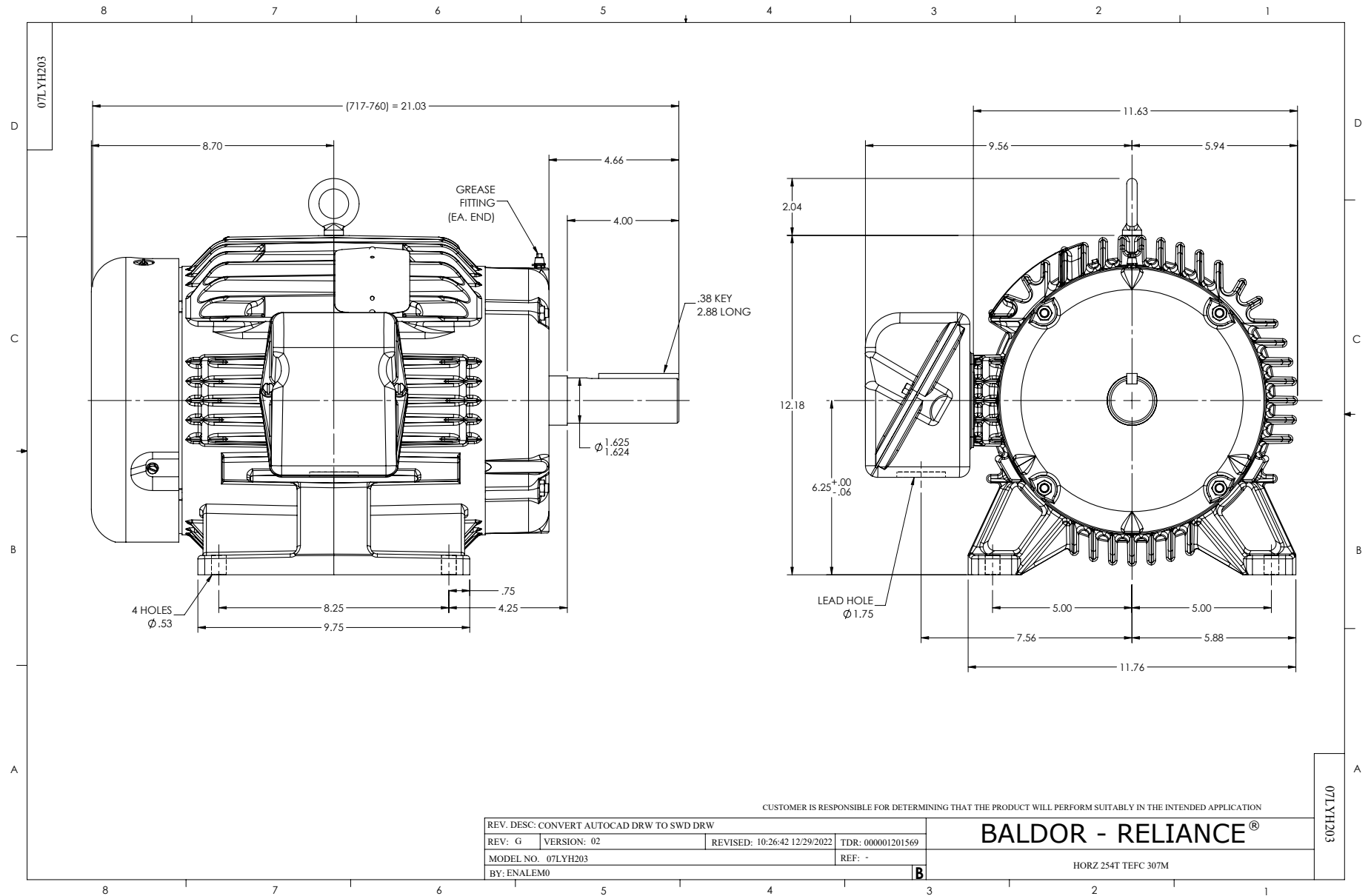
4.4 HP 3 PH 60 HZ 1172 RPM 460 V 0750M

Typical performance - not guaranteed values.

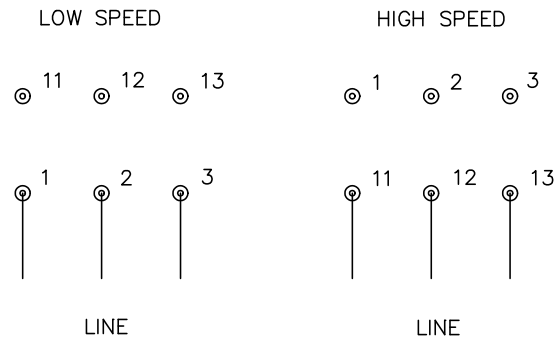
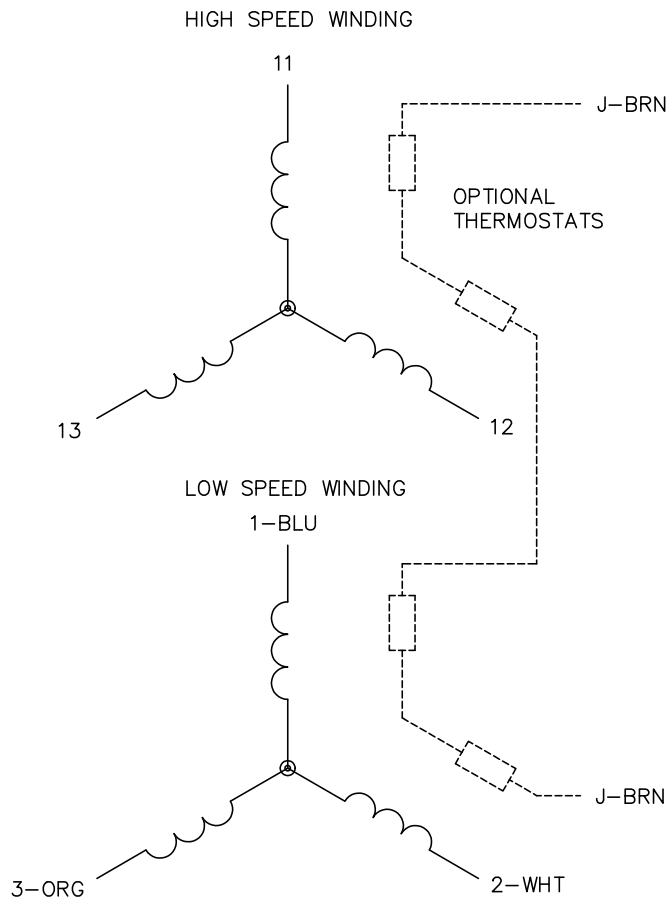
TORQUES (LB-FT): PO=58 PU=39 LR=48 LRA=39



10/6/2024 ACPERF, record # 36488



CD0013



NOTES:

1. INTERCHANGE ANY TWO LINE LEADS TO REVERSE ROTATION.
2. OPTIONAL THERMOSTATS ARE PROVIDED WHEN SPECIFIED.
3. ACTUAL NUMBER OF INTERNAL PARALLEL CIRCUITS MAY VARY.
4. LEAD COLORS ARE OPTIONAL. LEADS MUST ALWAYS BE NUMBERED AS SHOWN.

CD0013

| | | | |
|-------------------------------------------|---------|------------------------|--------------|
| REV. DESC: REVISE TO SHOW OPTIONAL COLORS | | | |
| REV. LTR: D | BY: JLP | REVISED: 01/22/99 8:50 | TDR: 0171435 |
| Ω 10000 | | FILE: AAA00005143 | MDL: - |
| | | MTL: - | |

BALDOR ELECTRIC Co.

3PH, SV, 6 LEADS, 2-SPEED 2-WINDING