

# ABB BALDOR RELIANCE III

---

## Customer information packet

M1725T

7.5/3.3HP, 1760/1160RPM, 3PH, 60HZ, 254T

Class - None

Division - Not Applicable

**Specifications**

<b>Enclosure</b>	TEFC
<b>Frame</b>	254T
<b>Frame Material</b>	Iron
<b>Frequency</b>	60.00 Hz
<b>Haz Area Class and Group</b>	None
<b>Haz Area Division</b>	Not Applicable
<b>Motor Letter Type</b>	Three Phase
<b>Output @ Frequency</b>	7.500 HP @ 60 HZ 3.300 HP @ 60 HZ
<b>Phase</b>	3
<b>Synchronous Speed @ Frequency</b>	1200 RPM @ 60 HZ
<b>Voltage @ Frequency</b>	460.0 V @ 60 HZ
<b>Agency Approvals</b>	UR CSA
<b>Ambient Temperature</b>	40 °C
<b>Auxiliary Box</b>	NO AUXILLARY BOX
<b>Auxiliary Box Lead Termination</b>	None
<b>Base Indicator</b>	Rigid
<b>Bearing Grease Type</b>	Polyrex EM (-20F +300F)
<b>Blower</b>	None
<b>Current @ Voltage</b>	10.300 A @ 460.0 V
<b>Design Code</b>	A
<b>Drip Cover</b>	No Drip Cover
<b>Duty Rating</b>	CONT
<b>Electrically Isolated Bearing</b>	Not Electrically Isolated
<b>Feedback Device</b>	NO FEEDBACK
<b>Front Face Code</b>	Standard
<b>Front Shaft Indicator</b>	None
<b>Heater Indicator</b>	No Heater
<b>High Voltage Full Load Amps</b>	5.7 a
<b>Insulation Class</b>	F
<b>Inverter Code</b>	Not Inverter

**Part Detail**

<b>Revision</b>	AU
<b>Type</b>	AC
<b>Mech. spec.</b>	09C101
<b>Base</b>	
<b>Status</b>	PRD/A
<b>Elec. spec.</b>	09WGX206
<b>Layout</b>	09LYC101
<b>Eff. date</b>	10-07-2024
<b>CD Diagram</b>	CD0013
<b>Poles</b>	04/06
<b>Leads</b>	6#12
<b>Proprietary</b>	False
<b>Created date</b>	01-01-0001

<b>KVA Code</b>	J
<b>Lifting Lugs</b>	Standard Lifting Lugs
<b>Locked Bearing Indicator</b>	Locked Bearing
<b>Motor Lead Exit</b>	Ko Box
<b>Motor Lead Quantity/Wire Size</b>	6 @ 12 AWG
<b>Motor Lead Termination</b>	Flying Leads
<b>Motor Standards</b>	NEMA
<b>Motor Type</b>	0928M
<b>Mounting Arrangement</b>	F1
<b>Number of Poles</b>	4 6
<b>Overall Length</b>	23.28 IN
<b>Product Family</b>	General Purpose
<b>Pulley End Bearing Type</b>	Ball
<b>Pulley Face Code</b>	Standard
<b>Pulley Shaft Indicator</b>	Standard
<b>Rodent Screen</b>	None
<b>Service Factor</b>	1.15
<b>Shaft Diameter</b>	1.625 IN
<b>Shaft Extension Location</b>	Pulley End
<b>Shaft Ground Indicator</b>	No Shaft Grounding
<b>Shaft Rotation</b>	Reversible
<b>Shaft Slinger Indicator</b>	Shaft Slinger
<b>Speed</b>	1160 rpm 1760 rpm
<b>Speed Code</b>	2S-2W-VT
<b>Starting Method</b>	Direct on line
<b>Thermal Device - Bearing</b>	None
<b>Thermal Device - Winding</b>	None
<b>Vibration Sensor Indicator</b>	No Vibration Sensor
<b>Winding Thermal 1</b>	None
<b>Winding Thermal 2</b>	None

**Nameplate**

<b>NP1256L</b>									
<b>CAT.NO.</b>	M1725T								
<b>SPEC.</b>	09C101X206								
<b>HP</b>	7.5/3.3								
<b>VOLTS</b>	460								
<b>AMP</b>	10.3/5.7								
<b>RPM</b>	1760/1160								
<b>FRAME</b>	254T		<b>HZ</b>	60		<b>PH</b>	3		
<b>SER.F.</b>	1.15	<b>CODE</b>	J	<b>DES</b>	A	<b>CLASS</b>	F		
<b>NEMA-NOM-EFF</b>		<b>PF</b>							
<b>RATING</b>	40C AMB-CONT								
<b>CC</b>									
<b>DE</b>	6309		<b>ODE</b>	6208					
<b>ENCL</b>	TEFC	<b>SN</b>							

**Accessories**

<b>Part number</b>	<b>Description</b>	<b>Multiplier</b>
09-1309	C FACE KIT	A8

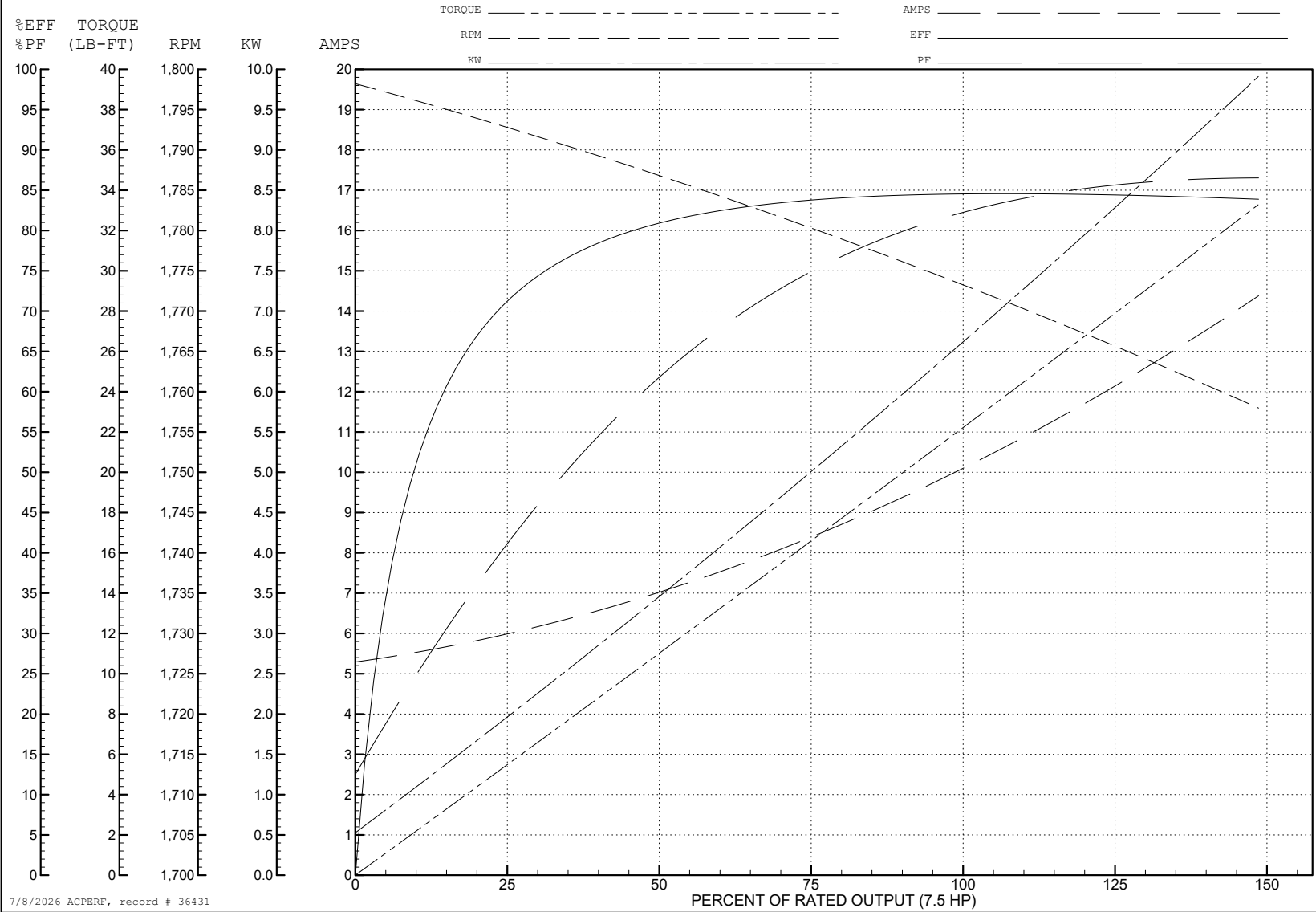
ABB Motors and Mechanical Inc.

WINDING # 09WGX206

7.5 HP 3 PH 60 HZ 1773 RPM 460 V 0928M

Typical performance - not guaranteed values.

TORQUES (LB-FT): PO=81 PU=47 LR=55 LRA=72



7/8/2026 ACPERF, record # 36431

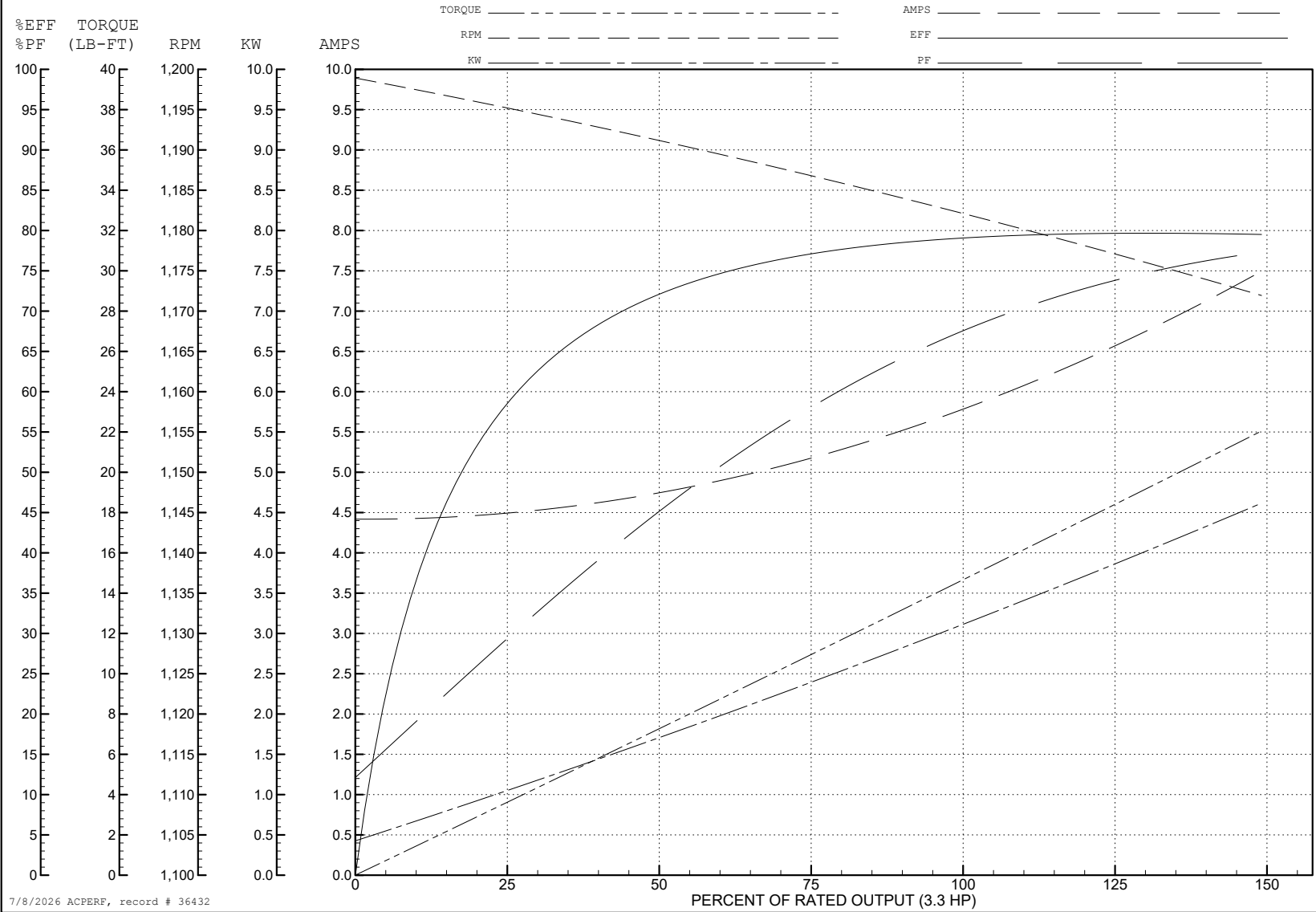
ABB Motors and Mechanical Inc.

WINDING # 09WGX206

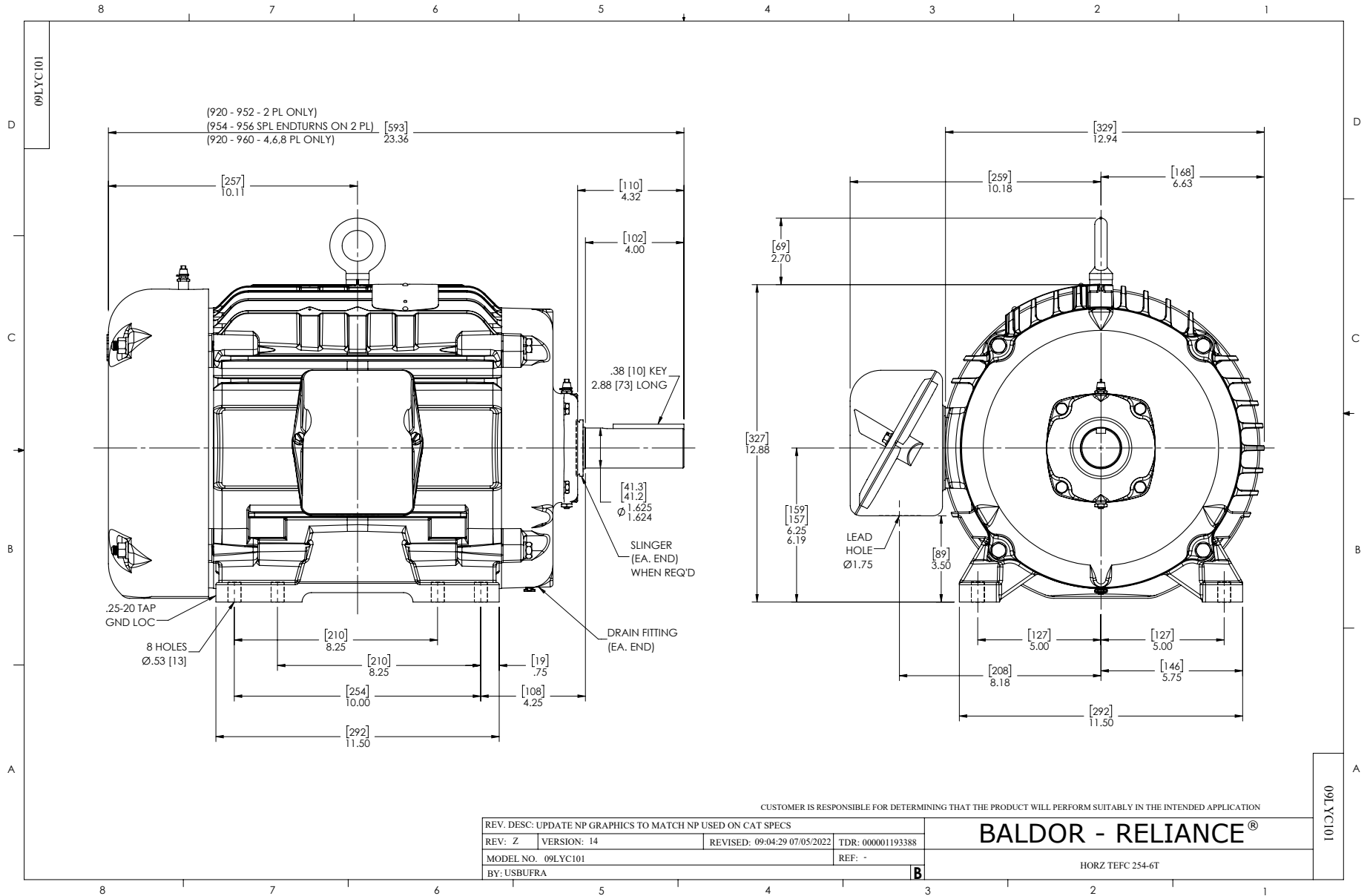
3.3 HP 3 PH 60 HZ 1182 RPM 460 V 0928M

Typical performance - not guaranteed values.

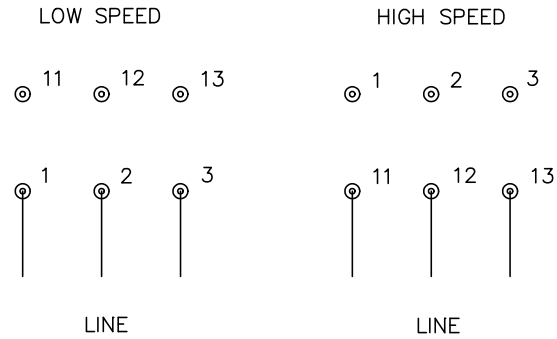
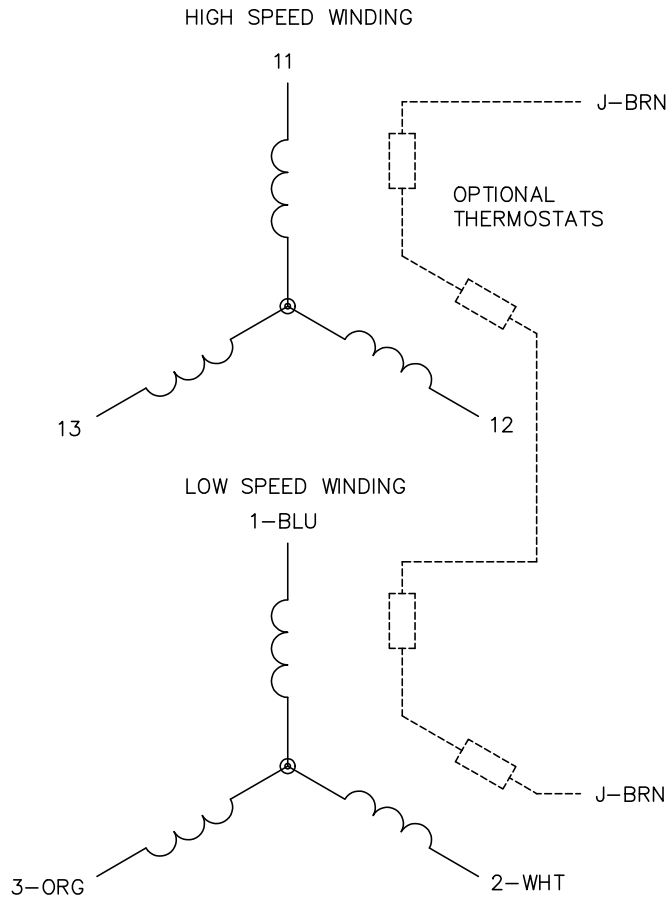
TORQUES (LB-FT): PO=52 PU=26 LR=31 LRA=32



7/8/2026 ACPERF, record # 36432



CD0013



**NOTES:**

1. INTERCHANGE ANY TWO LINE LEADS TO REVERSE ROTATION.
2. OPTIONAL THERMOSTATS ARE PROVIDED WHEN SPECIFIED.
3. ACTUAL NUMBER OF INTERNAL PARALLEL CIRCUITS MAY VARY.
4. LEAD COLORS ARE OPTIONAL. LEADS MUST ALWAYS BE NUMBERED AS SHOWN.

CD0013

REV. DESC: REVISE TO SHOW OPTIONAL COLORS			
REV. LTR: D	BY: JLP	REVISED: 01/22/99 8:50	TDR: 0171435
Ω 10000		FILE: AAA00005143	MDL: -
		MTL: -	

**BALDOR ELECTRIC Co.**

3PH, SV, 6 LEADS, 2-SPEED 2-WINDING