

BALDOR • RELIANCE

Customer information packet

M1724T

5/2.2HP, 1725/1140RPM, 3PH, 60HZ, 215T, 3740M

Class - None

Division - Not Applicable

Specifications

Enclosure	TEFC
Frame	215T
Frame Material	Steel
Frequency	60.00 Hz
Motor Letter Type	Three Phase
Output @ Frequency	5.000 HP @ 60 HZ 2.200 HP @ 60 HZ
Phase	3
Synchronous Speed @ Frequency	1200 RPM @ 60 HZ
Voltage @ Frequency	460.0 V @ 60 HZ
XP Class and Group	None
XP Division	Not Applicable
Agency Approvals	UR CSA
Ambient Temperature	40 °C
Auxillary Box	No Auxillary Box
Auxillary Box Lead Termination	None
Base Indicator	Rigid
Bearing Grease Type	Polyrex EM (-20F +300F)
Blower	None
Current @ Voltage	6.400 A @ 460.0 V
Design Code	B
Drip Cover	No Drip Cover
Duty Rating	CONT
Electrically Isolated Bearing	Not Electrically Isolated
Feedback Device	NO FEEDBACK
Front Shaft Indicator	None
Heater Indicator	No Heater
High Voltage Full Load Amps	3.5 a
Insulation Class	F
Inverter Code	Not Inverter
KVA Code	K

Part detail

Revision	C
Type	AC
Mech. spec.	37T397
Base	
Status	PRD/A
Elec. spec.	37WGY494
Layout	37LYT397
Eff. date	08-15-2022
CD Diagram	CD0013
Poles	04/06
Leads	6#14
Proprietary	False
Created date	06-11-2019

Lifting Lugs	Standard Lifting Lugs
Locked Bearing Indicator	No Locked Bearing
Motor Lead Quantity/Wire Size	6 @ 14 AWG
Motor Lead Termination	Flying Leads
Motor Standards	NEMA
Motor Type	3740M
Mounting Arrangement	F1
Number of Poles	4 6
Overall Length	19.01 IN
Product Family	General Purpose
Pulley End Bearing Type	Ball
Pulley Face Code	Standard
Pulley Shaft Indicator	Standard
Rodent Screen	None
Service Factor	1.15
Shaft Diameter	1.375 IN
Shaft Ground Indicator	No Shaft Grounding
Shaft Rotation	Reversible
Shaft Slinger Indicator	No Slinger
Speed	1140 rpm 1725 rpm
Speed Code	2S-2W-VT
Starting Method	Direct on line
Thermal Device - Bearing	None
Thermal Device - Winding	None
Vibration Sensor Indicator	No Vibration Sensor
Winding Thermal 1	None
Winding Thermal 2	None

Nameplate

NP1256L									
CAT.NO.	M1724T								
SPEC.	37T397Y494G1								
HP	5/2.2								
VOLTS	460								
AMP	6.4/3.5								
RPM	1725/1140								
FRAME	215T		HZ	60		PH	3		
SER.F.	1.15	CODE	K	DES	B	CLASS	F		
NEMA-NOM-EFF		PF							
RATING	40C AMB-CONT								
CC		USABLE AT 208V							
DE	6307	ODE	6206						
ENCL	TEFC	SN							

Accessories

Part number	Description	Multiplier
37-3301	C FACE KIT	P1

AC Induction Motor Performance Data

Record # 36702

Typical performance - not guaranteed values

Winding: 37WGY494-R004		Type: 3740M		Enclosure: TEFC	
Nameplate Data			460 V, 60 Hz: High Speed Connection		
Rated Output (HP)	5/2.2	Full Load Torque	15 LB-FT		
Volts	460	Start Configuration	direct on line		
Full Load Amps	6.4/3.5	Breakdown Torque	51 LB-FT		
R.P.M.	1725/1140	Pull-up Torque	36 LB-FT		
Hz	60 Phase	3	Locked-rotor Torque	51 LB-FT	
NEMA Design Code	B KVA Code	K	Starting Current	58 A	
Service Factor (S.F.)		1.15	No-load Current	2.7 A	
NEMA Nom. Eff.	0 Power Factor	0	Line-line Res. @ 25°C	3.31 Ω	
Rating - Duty		40C AMB-CONT	Temp. Rise @ Rated Load	80°C	
S.F. Amps			Temp. Rise @ S.F. Load	96°C	

Load Characteristics 460 V, 60 Hz, 5 HP

% of Rated Load	25	50	75	100	125	150	S.F.
Power Factor	51	70	80	83	85	85	84
Efficiency	75.9	82.2	83.2	81.4	79.4	76	80.2
Speed	1780	1761	1743	1721	1697	1665	1707
Line amperes	3.1	4.1	5.3	6.8	8.4	10.4	7.76

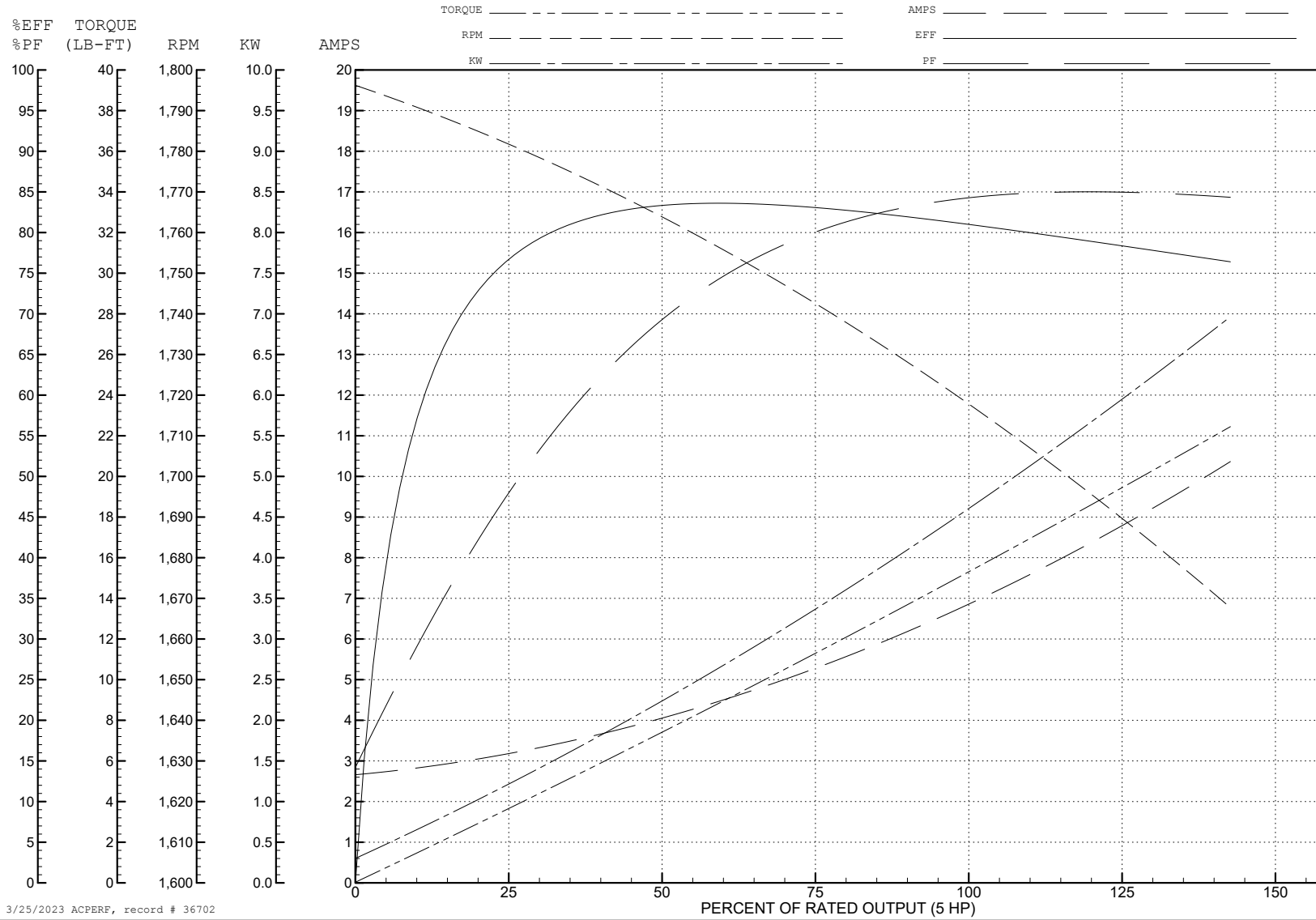
ABB Motors and Mechanical Inc.

WINDING # 37WGY494

5 HP 3 PH 60 HZ 1721 RPM 460 V 3740M

Typical performance - not guaranteed values.

TORQUES (LB-FT): PO=51 PU=36 LR=51 LRA=58



3/25/2023 ACPERF, record # 36702

AC Induction Motor Performance Data

Record # 36703

Typical performance - not guaranteed values

Winding: 37WGY494-R004		Type: 3740M	Enclosure: TEFC		
Nameplate Data		460 V, 60 Hz: Low Speed Connection			
Rated Output (HP)	5/2.2	Full Load Torque	9.9 LB-FT		
Volts	460	Start Configuration	direct on line		
Full Load Amps	6.4/3.5	Breakdown Torque	25 LB-FT		
R.P.M.	1725/1140	Pull-up Torque	13 LB-FT		
Hz	60 Phase	3	Locked-rotor Torque	20 LB-FT	
NEMA Design Code	B	KVA Code	K	Starting Current	19.5 A
Service Factor (S.F.)		1.15	No-load Current	1.9 A	
NEMA Nom. Eff.	0	Power Factor	0	Line-line Res. @ 25°C	8.58 Ω
Rating - Duty		40C AMB-CONT	Temp. Rise @ Rated Load	58°C	
S.F. Amps			Temp. Rise @ S.F. Load	69°C	

Load Characteristics 460 V, 60 Hz, 2.2 HP

% of Rated Load	25	50	75	100	125	150	S.F.
Power Factor	37	57	68	75	77	79	76
Efficiency	71.6	79.7	80.9	80	77.9	75.1	78.7
Speed	1189	1179	1167	1155	1137	1119	1144
Line amperes	2	2.3	2.8	3.4	4.2	5	3.88

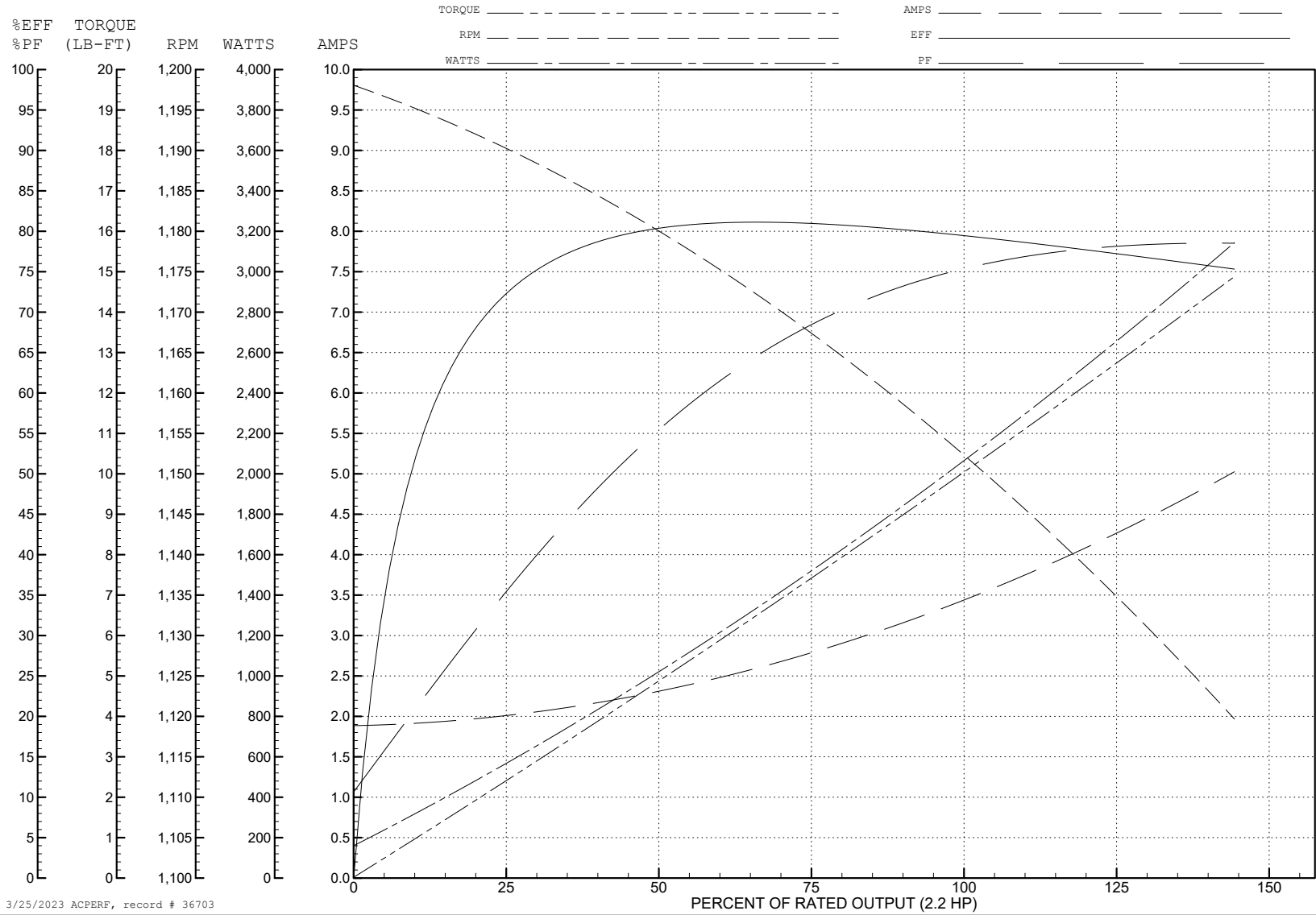
ABB Motors and Mechanical Inc.

WINDING # 37WGY494

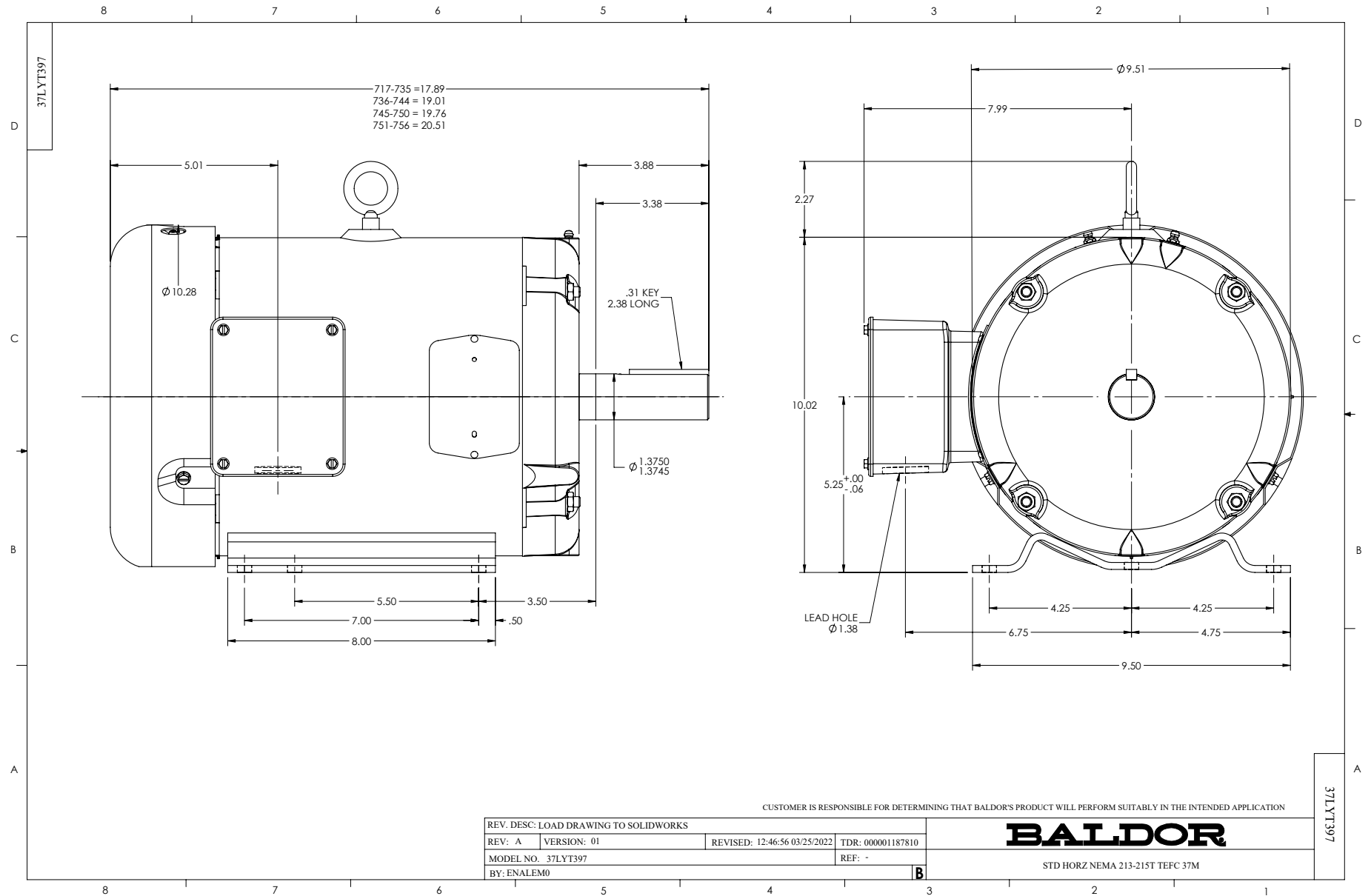
2.2 HP 3 PH 60 HZ 1155 RPM 460 V 3740M

Typical performance - not guaranteed values.

TORQUES (LB-FT): PO=25 PU=13 LR=20 LRA=19.5



3/25/2023 ACPERF, record # 36703



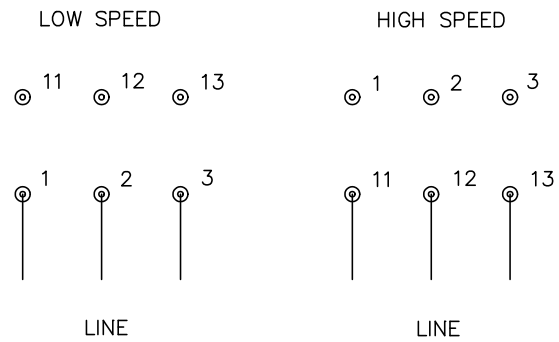
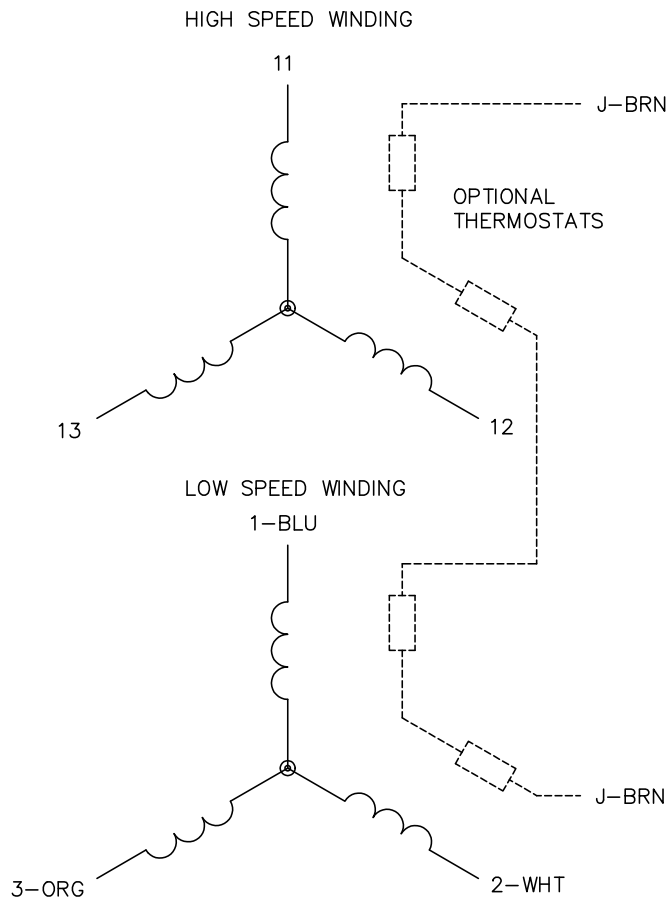
CUSTOMER IS RESPONSIBLE FOR DETERMINING THAT BALDOR'S PRODUCT WILL PERFORM SUITABLY IN THE INTENDED APPLICATION

REV. DESC: LOAD DRAWING TO SOLIDWORKS			
REV: A	VERSION: 01	REVISED: 12:46:56 03/25/2022	TDR: 000001187810
MODEL NO. 37LYT397		REF: -	
BY: ENALEM0		B	

BALDOR

STD HORZ NEMA 213-215T TEFC 37M

CD0013



NOTES:

1. INTERCHANGE ANY TWO LINE LEADS TO REVERSE ROTATION.
2. OPTIONAL THERMOSTATS ARE PROVIDED WHEN SPECIFIED.
3. ACTUAL NUMBER OF INTERNAL PARALLEL CIRCUITS MAY VARY.
4. LEAD COLORS ARE OPTIONAL. LEADS MUST ALWAYS BE NUMBERED AS SHOWN.

CD0013

REV. DESC: REVISE TO SHOW OPTIONAL COLORS			
REV. LTR: D	BY: JLP	REVISED: 01/22/99 8:50	TDR: 0171435
Ω 10000		FILE: AAA00005143	MDL: -
		MTL: -	

BALDOR ELECTRIC Co.

3PH, SV, 6 LEADS, 2-SPEED 2-WINDING