



Customer information packet

M1710T

10/5HP, 1760/875RPM, 3PH, 60HZ, 254T, 0940M

Class - None

Division - Not Applicable

Specifications

Enclosure	TEFC
Frame	254T
Frame Material	Iron
Frequency	60.00 Hz
Haz Area Class and Group	None
Haz Area Division	Not Applicable
Motor Letter Type	Three Phase
Output @ Frequency	5.000 HP @ 60 HZ 10.000 HP @ 60 HZ
Phase	3
Synchronous Speed @ Frequency	1800 RPM @ 60 HZ
Voltage @ Frequency	460.0 V @ 60 HZ
Agency Approvals	UR CSA
Ambient Temperature	40 °C
Auxillary Box	No Auxillary Box
Auxillary Box Lead Termination	None
Base Indicator	Rigid
Bearing Grease Type	Polyrex EM (-20F +300F)
Blower	None
Current @ Voltage	13.000 A @ 460.0 V
Design Code	B
Drip Cover	No Drip Cover
Duty Rating	CONT
Electrically Isolated Bearing	Not Electrically Isolated
Feedback Device	NO FEEDBACK
Front Face Code	Standard
Front Shaft Indicator	None
Heater Indicator	No Heater
High Voltage Full Load Amps	11.3 a
Insulation Class	F
Inverter Code	Not Inverter

Part detail

Revision	AJ
Type	AC
Mech. spec.	09C101
Base	
Status	PRD/A
Elec. spec.	09WGZ144
Layout	09LYC101
Eff. date	02-08-2024
CD Diagram	CD0011
Poles	04/08
Leads	6#12
Proprietary	False
Created date	11-18-2005

KVA Code	H
Lifting Lugs	Standard Lifting Lugs
Locked Bearing Indicator	Locked Bearing
Motor Lead Exit	Ko Box
Motor Lead Quantity/Wire Size	6 @ 12 AWG
Motor Lead Termination	Flying Leads
Motor Standards	NEMA
Motor Type	0940M
Mounting Arrangement	F1
Number of Poles	4 8
Overall Length	23.28 IN
Product Family	General Purpose
Pulley End Bearing Type	Ball
Pulley Face Code	Standard
Pulley Shaft Indicator	Standard
Rodent Screen	None
Service Factor	1.15
Shaft Diameter	1.625 IN
Shaft Extension Location	Pulley End
Shaft Ground Indicator	No Shaft Grounding
Shaft Rotation	Reversible
Shaft Slinger Indicator	Shaft Slinger
Speed	1760 rpm 875 rpm
Speed Code	2S-1W-CT
Starting Method	Direct on line
Thermal Device - Bearing	None
Thermal Device - Winding	None
Vibration Sensor Indicator	No Vibration Sensor
Winding Thermal 1	None
Winding Thermal 2	None

Nameplate

NP1256L									
CAT.NO.	M1710T								
SPEC.	09C101Z144								
HP	10/5								
VOLTS	460								
AMP	13/11.3								
RPM	1760/875								
FRAME	254T		HZ	60		PH	3		
SER.F.	1.15	CODE	H	DES	B	CLASS	F		
NEMA-NOM-EFF		PF							
RATING	40C AMB-CONT								
CC									
DE	6309		ODE	6208					
ENCL	TEFC	SN							

Accessories

Part number	Description	Multiplier
09-1309	C FACE KIT	A8

AC Induction Motor Performance Data

Record # 36440

Typical performance - not guaranteed values

Winding: 09WGZ144-R002		Type: 0940M	Enclosure: TEFC
Nameplate Data		460 V, 60 Hz: High Speed Connection	
Rated Output (HP)	10/5	Full Load Torque	29.3 LB-FT
Volts	460	Start Configuration	direct on line
Full Load Amps	13/11.3	Breakdown Torque	113 LB-FT
R.P.M.	1760/875	Pull-up Torque	33 LB-FT
Hz	60 Phase	Locked-rotor Torque	67.5 LB-FT
NEMA Design Code	B KVA Code	Starting Current	80.8 A
Service Factor (S.F.)	1.15	No-load Current	5.72 A
NEMA Nom. Eff.	0 Power Factor	Line-line Res. @ 25°C	1.57 Ω
Rating - Duty	40C AMB-CONT	Temp. Rise @ Rated Load	45°C
S.F. Amps		Temp. Rise @ S.F. Load	54°C

Load Characteristics 460 V, 60 Hz, 10 HP

% of Rated Load	25	50	75	100	125	150	S.F.
Power Factor	45	66	77	82	84	85	83
Efficiency	78.8	86.2	87.9	87.9	87.1	85.7	87.4
Speed	1793	1787	1781	1774	1766	1756	1769
Line amperes	6.46	8.15	10.5	12.9	16	19.3	14.8

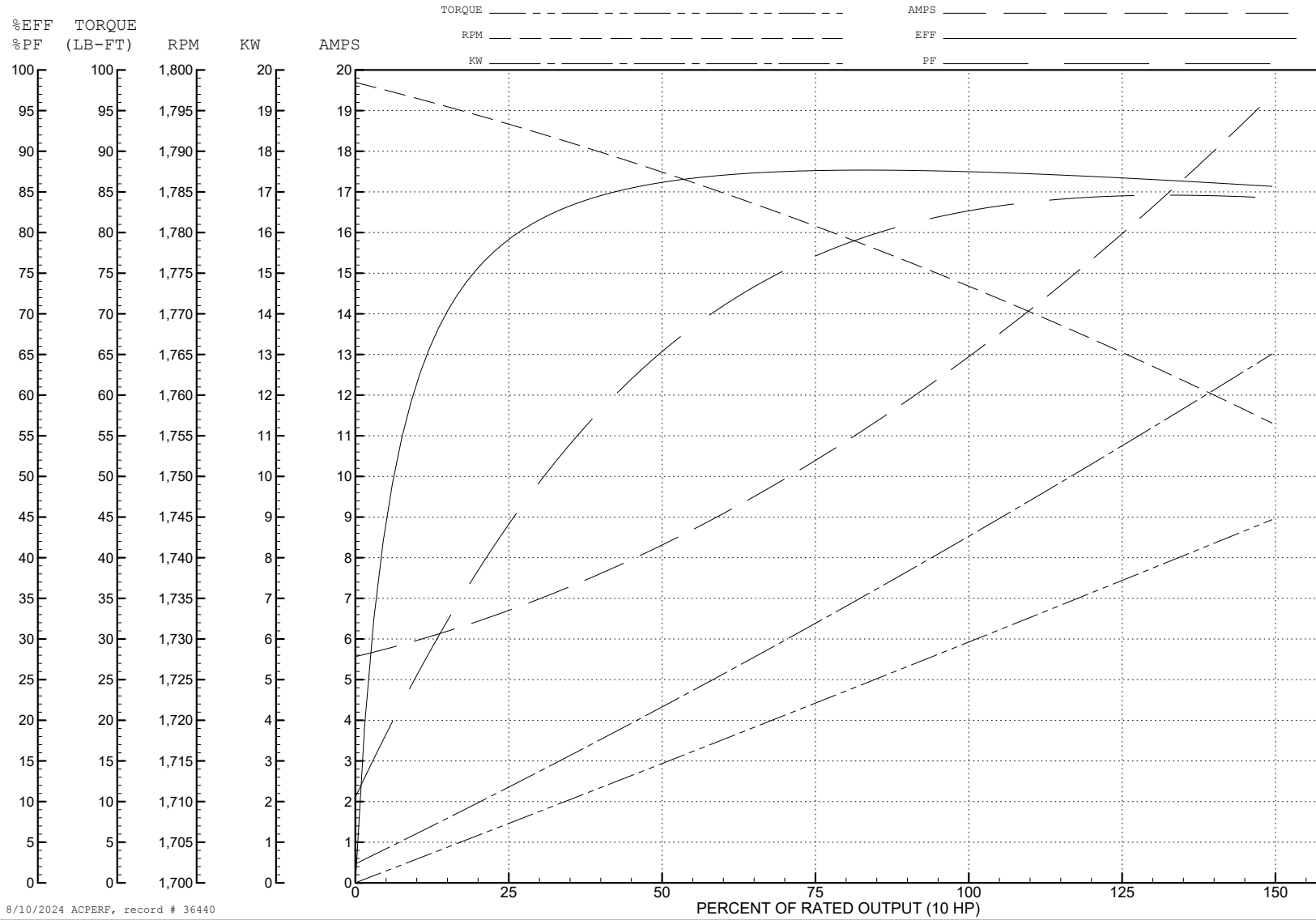
ABB Motors and Mechanical Inc.

WINDING # 09WGZ144

Typical performance - not guaranteed values.

10 HP 3 PH 60 HZ 1774 RPM 460 V 0940M

TORQUES (LB-FT): PO=113 PU=33 LR=67.5 LRA=80.8



8/10/2024 ACPERF, record # 36440

AC Induction Motor Performance Data

Record # 36441

Typical performance - not guaranteed values

Winding: 09WGZ144-R002		Type: 0940M		Enclosure: TEFC	
Nameplate Data			460 V, 60 Hz: Low Speed Connection		
Rated Output (HP)	10/5	Full Load Torque	29.7 LB-FT		
Volts	460	Start Configuration	direct on line		
Full Load Amps	13/11.3	Breakdown Torque	96.3 LB-FT		
R.P.M.	1760/875	Pull-up Torque	33.3 LB-FT		
Hz	60 Phase	3	Locked-rotor Torque	58.7 LB-FT	
NEMA Design Code	B KVA Code	H	Starting Current	40.9 A	
Service Factor (S.F.)		1.15	No-load Current	8.67 A	
NEMA Nom. Eff.	0 Power Factor	0	Line-line Res. @ 25°C	2.06 Ω	
Rating - Duty		40C AMB-CONT	Temp. Rise @ Rated Load	55°C	
S.F. Amps			Temp. Rise @ S.F. Load	64°C	

Load Characteristics 460 V, 60 Hz, 5 HP

% of Rated Load	25	50	75	100	125	150	S.F.
Power Factor	20	32	43	50	56	60	54
Efficiency	64.6	76.7	80.8	82.1	82	80.8	82
Speed	896	892	888	883	878	870	880
Line amperes	8.82	9.37	10.2	11.3	12.7	14.6	12.1

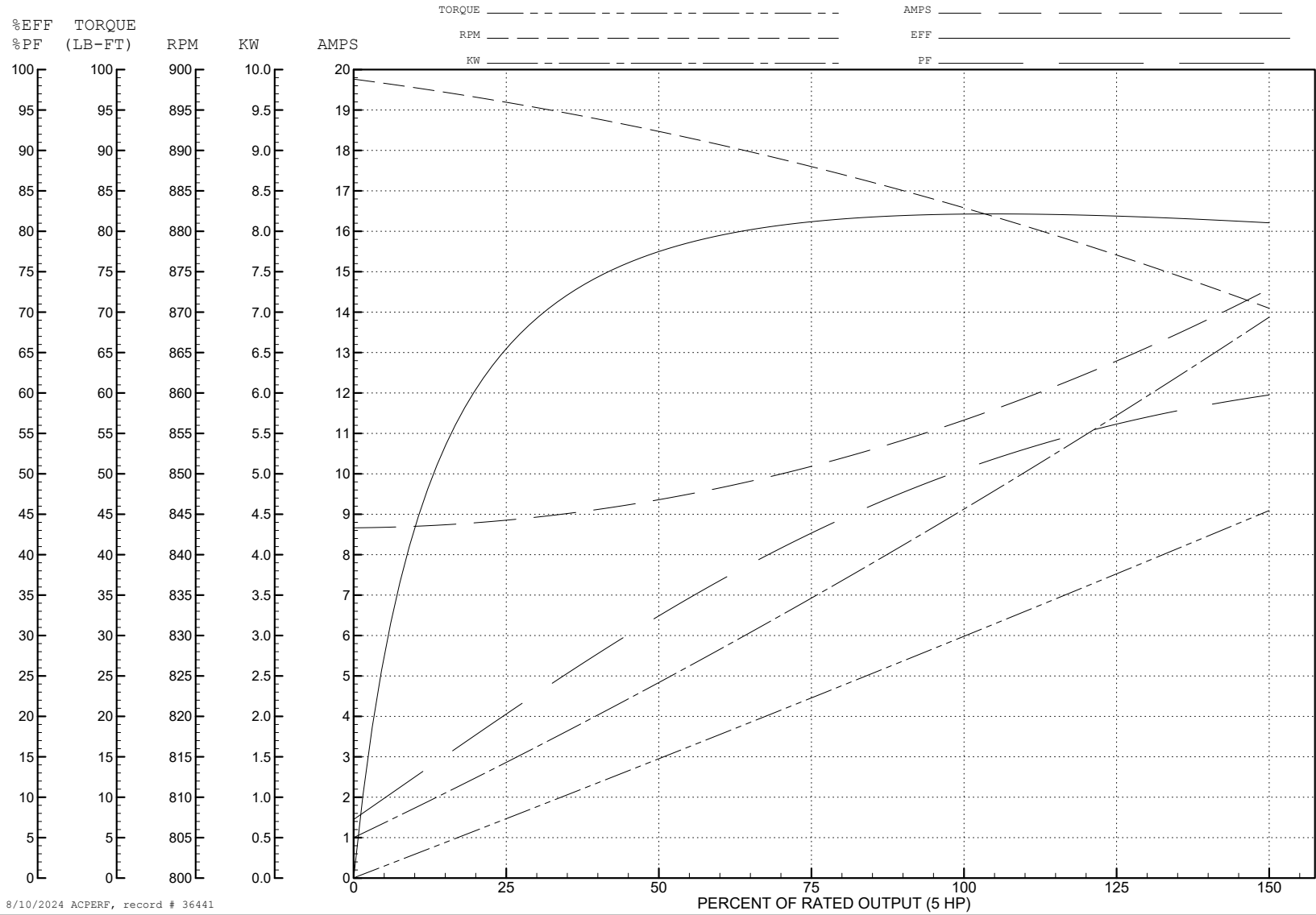
ABB Motors and Mechanical Inc.

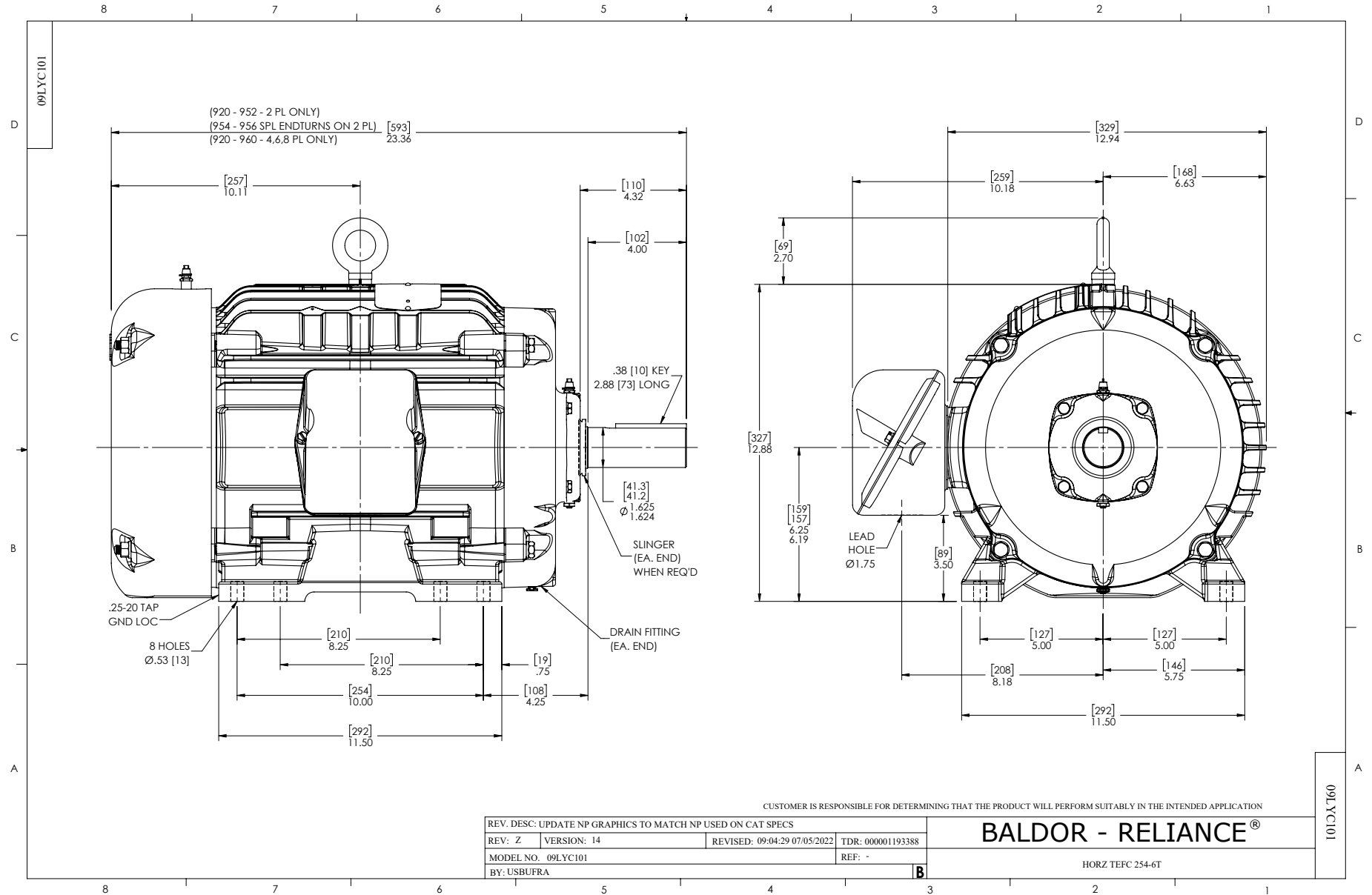
WINDING # 09WGZ144

Typical performance - not guaranteed values.

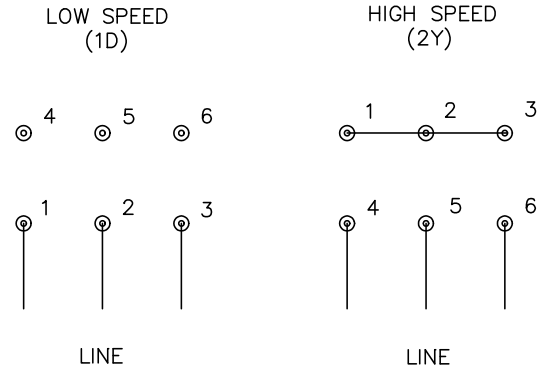
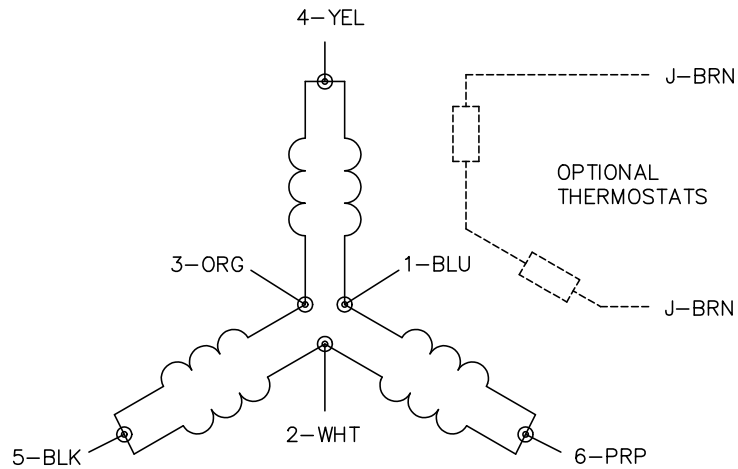
5 HP 3 PH 60 HZ 883 RPM 460 V 0940M

TORQUES (LB-FT): PO=96.3 PU=33.3 LR=58.7 LRA=40.9





CD0011



NOTES:

1. INTERCHANGE ANY TWO LINE LEADS TO REVERSE ROTATION.
2. OPTIONAL THERMOSTATS ARE PROVIDED WHEN SPECIFIED.
3. ACTUAL NUMBER OF INTERNAL PARALLEL CIRCUITS MAY BE A MULTIPLE OF THOSE SHOWN ABOVE.
4. LEAD COLORS ARE OPTIONAL. LEADS MUST ALWAYS BE NUMBERED AS SHOWN.

CD0011

REV. DESC: REVISE TO SHOW OPTIONAL COLORS			
REV. LTR: F	BY: JLP	REVISED: 01/21/99 5:04	TDR: 0171435
110000		FILE: DWG\142.wg	MDL: -
		MTL: -	

BALDOR ELECTRIC Co.

3PH, SV, 6 LEADS, 2-SPEED 1-WINDING CONSTANT TORQUE