

ABB BALDOR RELIANCE III

Customer information packet

M1709T

7.5/3.8HP, 1740/860RPM, 3PH, 60HZ, 215T, 3754

Class - None

Division - Not Applicable

Specifications

| | |
|---------------------------------------|--------------------------------------|
| Enclosure | TEFC |
| Frame | 215T |
| Frame Material | Steel |
| Frequency | 60.00 Hz |
| Haz Area Class and Group | None |
| Haz Area Division | Not Applicable |
| Motor Letter Type | Three Phase |
| Output @ Frequency | 7.500 HP @ 60 HZ 3.800 HP @ 60 HZ |
| Phase | 3 |
| Synchronous Speed @ Frequency | 1800 RPM @ 60 HZ |
| Voltage @ Frequency | 460.0 V @ 60 HZ |
| Agency Approvals | UR CSA |
| Ambient Temperature | 40 °C |
| Auxiliary Box | NO AUXILLARY BOX |
| Auxiliary Box Lead Termination | None |
| Base Indicator | Rigid |
| Bearing Grease Type | Polyrex EM (-20F +300F) |
| Blower | None |
| Current @ Voltage | 9.400 A @ 460.0 V |
| Design Code | B |
| Drip Cover | No Drip Cover |
| Duty Rating | CONT |
| Electrically Isolated Bearing | Not Electrically Isolated |
| Feedback Device | NO FEEDBACK |
| Front Face Code | Standard |
| Front Shaft Indicator | None |
| Heater Indicator | No Heater |
| High Voltage Full Load Amps | 8.3 a |
| Insulation Class | F |
| Inverter Code | Not Inverter |

Part Detail

| | |
|---------------------|------------|
| Revision | P |
| Type | AC |
| Mech. spec. | 37A001 |
| Base | |
| Status | PRD/A |
| Elec. spec. | 37WGS304 |
| Layout | 37LYA001 |
| Eff. date | 11-05-2025 |
| CD Diagram | CD0011 |
| Poles | 04/08 |
| Leads | 6#14 |
| Proprietary | False |
| Created date | 02-21-2007 |

| | |
|--------------------------------------|-----------------------|
| KVA Code | K |
| Lifting Lugs | Standard Lifting Lugs |
| Locked Bearing Indicator | No Locked Bearing |
| Motor Lead Exit | Ko Box |
| Motor Lead Quantity/Wire Size | 6 @ 14 AWG |
| Motor Lead Termination | Flying Leads |
| Motor Standards | NEMA |
| Motor Type | 3754M |
| Mounting Arrangement | F1 |
| Number of Poles | 4 8 |
| Overall Length | 20.51 IN |
| Product Family | General Purpose |
| Pulley End Bearing Type | Ball |
| Pulley Face Code | Standard |
| Pulley Shaft Indicator | Standard |
| Rodent Screen | None |
| Service Factor | 1.15 |
| Shaft Diameter | 1.375 IN |
| Shaft Extension Location | Pulley End |
| Shaft Ground Indicator | No Shaft Grounding |
| Shaft Rotation | Reversible |
| Shaft Slinger Indicator | No Slinger |
| Speed | 1740 rpm 860 rpm |
| Speed Code | 2S-1W-CT |
| Starting Method | Direct on line |
| Thermal Device - Bearing | None |
| Thermal Device - Winding | None |
| Vibration Sensor Indicator | No Vibration Sensor |
| Winding Thermal 1 | None |
| Winding Thermal 2 | None |

Nameplate

| NP1256L | | | | | | | | | | |
|---------------------|--------------|-------------|------------|------------|---|--------------|---|--|--|--|
| CAT.NO. | M1709T | | | | | | | | | |
| SPEC. | 37A001S304 | | | | | | | | | |
| HP | 7.5/3.8 | | | | | | | | | |
| VOLTS | 460 | | | | | | | | | |
| AMP | 9.4/8.3 | | | | | | | | | |
| RPM | 1740/860 | | | | | | | | | |
| FRAME | 215T | | HZ | 60 | | PH | 3 | | | |
| SER.F. | 1.15 | CODE | K | DES | B | CLASS | F | | | |
| NEMA-NOM-EFF | | PF | | | | | | | | |
| RATING | 40C AMB-CONT | | | | | | | | | |
| CC | | | | | | | | | | |
| DE | 6307 | | ODE | 6206 | | | | | | |
| ENCL | TEFC | SN | | | | | | | | |

Accessories

| Part number | Description | Multiplier |
|--------------------|--------------------|-------------------|
| 37-3301 | C FACE KIT | P1 |

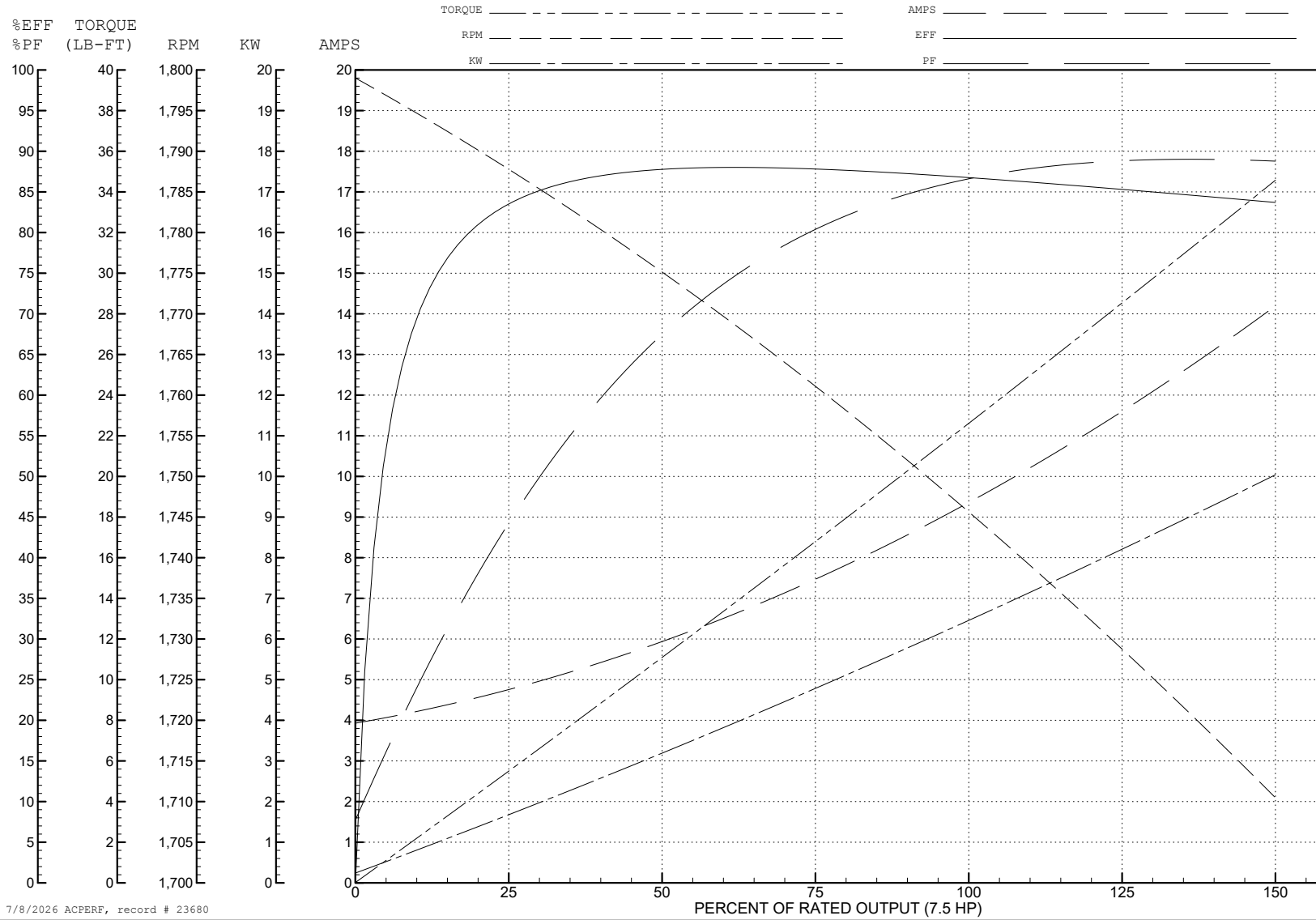
ABB Motors and Mechanical Inc.

WINDING # 37WGS304

Typical performance - not guaranteed values.

7.5 HP 3 PH 60 HZ 1746 RPM 460 V 3754M

TORQUES (LB-FT): PO=103 PU=29.5 LR=67.4 LRA=81.7



7/8/2026 ACPERF, record # 23680

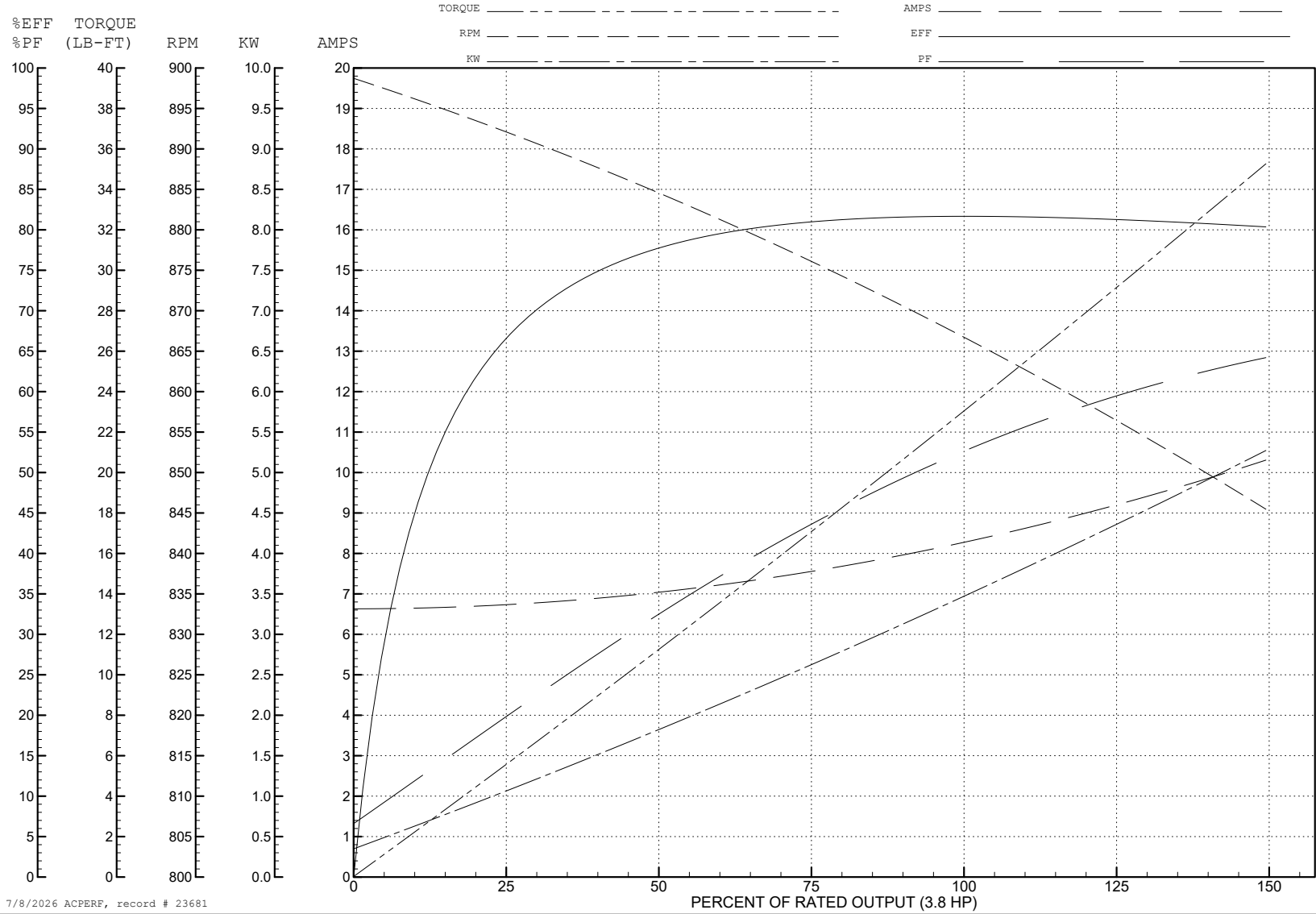
ABB Motors and Mechanical Inc.

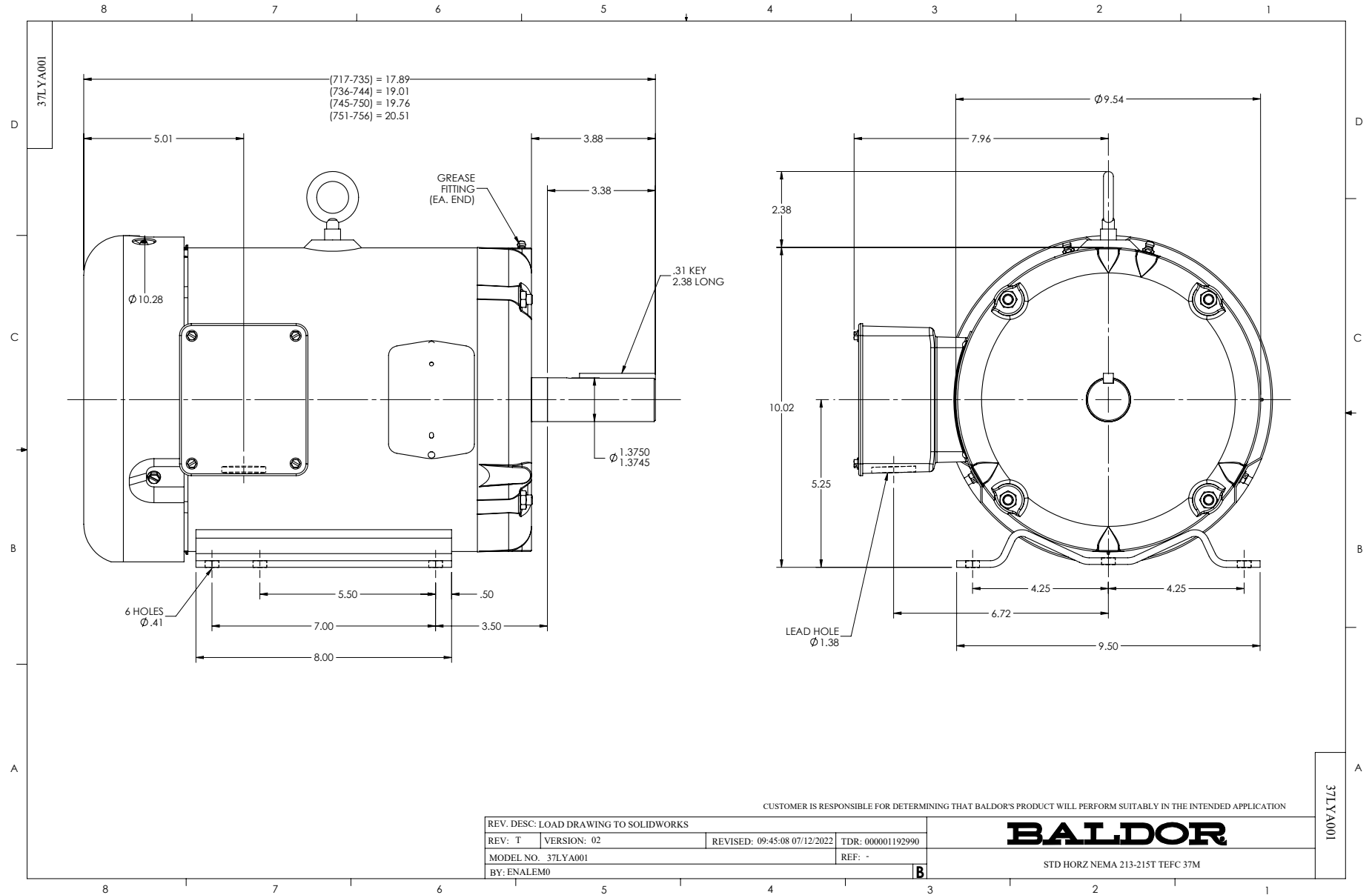
WINDING # 37WGS304

3.8 HP 3 PH 60 HZ 867 RPM 460 V 3754M

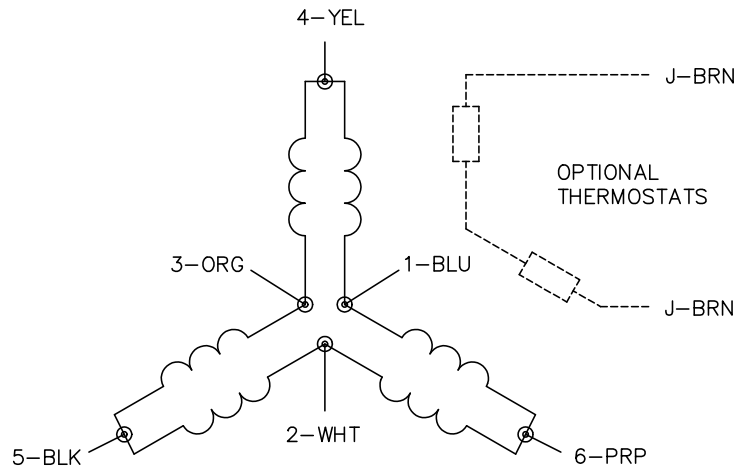
Typical performance - not guaranteed values.

TORQUES (LB-FT): PO=95.5 PU=38.1 LR=58.5 LRA=43

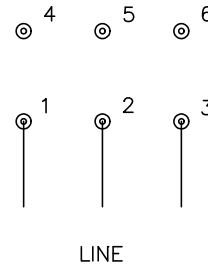




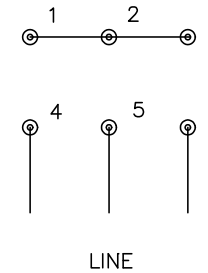
CD0011



LOW SPEED
(1D)



HIGH SPEED
(2Y)



NOTES:

1. INTERCHANGE ANY TWO LINE LEADS TO REVERSE ROTATION.
2. OPTIONAL THERMOSTATS ARE PROVIDED WHEN SPECIFIED.
3. ACTUAL NUMBER OF INTERNAL PARALLEL CIRCUITS MAY BE A MULTIPLE OF THOSE SHOWN ABOVE.
4. LEAD COLORS ARE OPTIONAL. LEADS MUST ALWAYS BE NUMBERED AS SHOWN.

CD0011

| | | | |
|---|---------|------------------------|--------------|
| REV. DESC: REVISE TO SHOW OPTIONAL COLORS | | | |
| REV. LTR: F | BY: JLP | REVISED: 01/21/99 5:04 | TDR: 0171435 |
| 110000 | | FILE: DWG\142.wg | MDL: - |
| | | MTL: - | |

BALDOR ELECTRIC Co.

3PH, SV, 6 LEADS, 2-SPEED 1-WINDING CONSTANT TORQUE