



Customer information packet

M1704T

1/.5HP, 1760/860RPM, 3PH, 60HZ, 143T, 3530M, T

Class - None

Division - Not Applicable

Specifications

Enclosure	TEFC
Frame	143T
Frame Material	Steel
Frequency	60.00 Hz
Haz Area Class and Group	None
Haz Area Division	Not Applicable
Motor Letter Type	Three Phase
Output @ Frequency	1.000 HP @ 60 HZ .500 HP @ 60 HZ
Phase	3
Synchronous Speed @ Frequency	1800 RPM @ 60 HZ
Voltage @ Frequency	460.0 V @ 60 HZ
Agency Approvals	UR CSA
Ambient Temperature	40 °C
Auxillary Box	No Auxillary Box
Auxillary Box Lead Termination	None
Base Indicator	Rigid
Bearing Grease Type	Polyrex EM (-20F +300F)
Blower	None
Current @ Voltage	1.280 A @ 460.0 V
Design Code	-
Drip Cover	No Drip Cover
Duty Rating	CONT
Electrically Isolated Bearing	Not Electrically Isolated
Feedback Device	NO FEEDBACK
Front Shaft Indicator	None
Heater Indicator	No Heater
High Voltage Full Load Amps	1.3 a
Insulation Class	F
Inverter Code	Not Inverter
KVA Code	K

Part detail

Revision	D
Type	AC
Mech. spec.	35AA001
Base	
Status	PRD/A
Elec. spec.	35WGG369
Layout	35LYAA001
Eff. date	08-08-2024
CD Diagram	CD0011
Poles	04/08
Leads	6#18
Proprietary	False
Created date	02-23-2023

Lifting Lugs	No Lifting Lugs
Locked Bearing Indicator	No Locked Bearing
Motor Lead Quantity/Wire Size	6 @ 18 AWG
Motor Lead Termination	Flying Leads
Motor Standards	NEMA
Motor Type	3530M
Mounting Arrangement	F1
Number of Poles	4 8
Overall Length	14.19 IN
Product Family	General Purpose
Pulley End Bearing Type	Ball
Pulley Face Code	Standard
Pulley Shaft Indicator	Standard
Rodent Screen	None
Service Factor	1.15
Shaft Diameter	0.875 IN
Shaft Ground Indicator	No Shaft Grounding
Shaft Rotation	Reversible
Shaft Slinger Indicator	No Slinger
Speed	1760 rpm 860 rpm
Speed Code	2S-1W-CT
Starting Method	Direct on line
Thermal Device - Bearing	None
Thermal Device - Winding	None
Vibration Sensor Indicator	No Vibration Sensor
Winding Thermal 1	None
Winding Thermal 2	None

Nameplate

NP1256L									
CAT.NO.	M1704T								
SPEC.	35AA001G369								
HP	1/5								
VOLTS	460								
AMP	1.3/1.7								
RPM	1760/860								
FRAME	143T		HZ	60		PH	3		
SER.F.	1.15	CODE	K	DES	-	CLASS	F		
NEMA-NOM-EFF		PF							
RATING	40C AMB-CONT								
CC									
DE	6205		ODE	6203					
ENCL	TEFC	SN							
	SFA 1.46								

Accessories

Part number	Description	Multiplier
35-8762	C FACE KIT	A8
35EP1506A01SP	D-FLANGE KIT	A8

AC Induction Motor Performance Data

Record # 87906

Typical performance - not guaranteed values

Winding: 35WGG369-R001		Type: 3530M	Enclosure: TEFC	
Nameplate Data			460 V, 60 Hz: High Speed Connection	
Rated Output (HP)	1/.5	Full Load Torque	3.04 LB-FT	
Volts	460	Start Configuration	direct on line	
Full Load Amps	1.28/1.55	Breakdown Torque	10.3 LB-FT	
R.P.M.	1760/860	Pull-up Torque	4.82 LB-FT	
Hz	60 Phase	Locked-rotor Torque	6.54 LB-FT	
NEMA Design Code	- KVA Code	Starting Current	10.08 A	
Service Factor (S.F.)	1.15	No-load Current	0.571 A	
NEMA Nom. Eff.	0 Power Factor	Line-line Res. @ 25°C	29.1 Ω	
Rating - Duty	40C AMB-CONT	Temp. Rise @ Rated Load	22°C	
S.F. Amps		Temp. Rise @ S.F. Load	28°C	
		Locked-rotor Power Factor	78.6	
		Rotor inertia	0.217 lb-ft ²	

Load Characteristics 460 V, 60 Hz, 1 HP

% of Rated Load	25	50	75	100	125	150	S.F.
Power Factor	48	72	85	89	90	91	90
Efficiency	81.8	84.3	84.1	84.2	82.8	80.1	83.4
Speed	1793	1782	1772	1762	1749	1737	1754
Line amperes	0.642	0.801	1.03	1.28	1.58	1.9	1.46

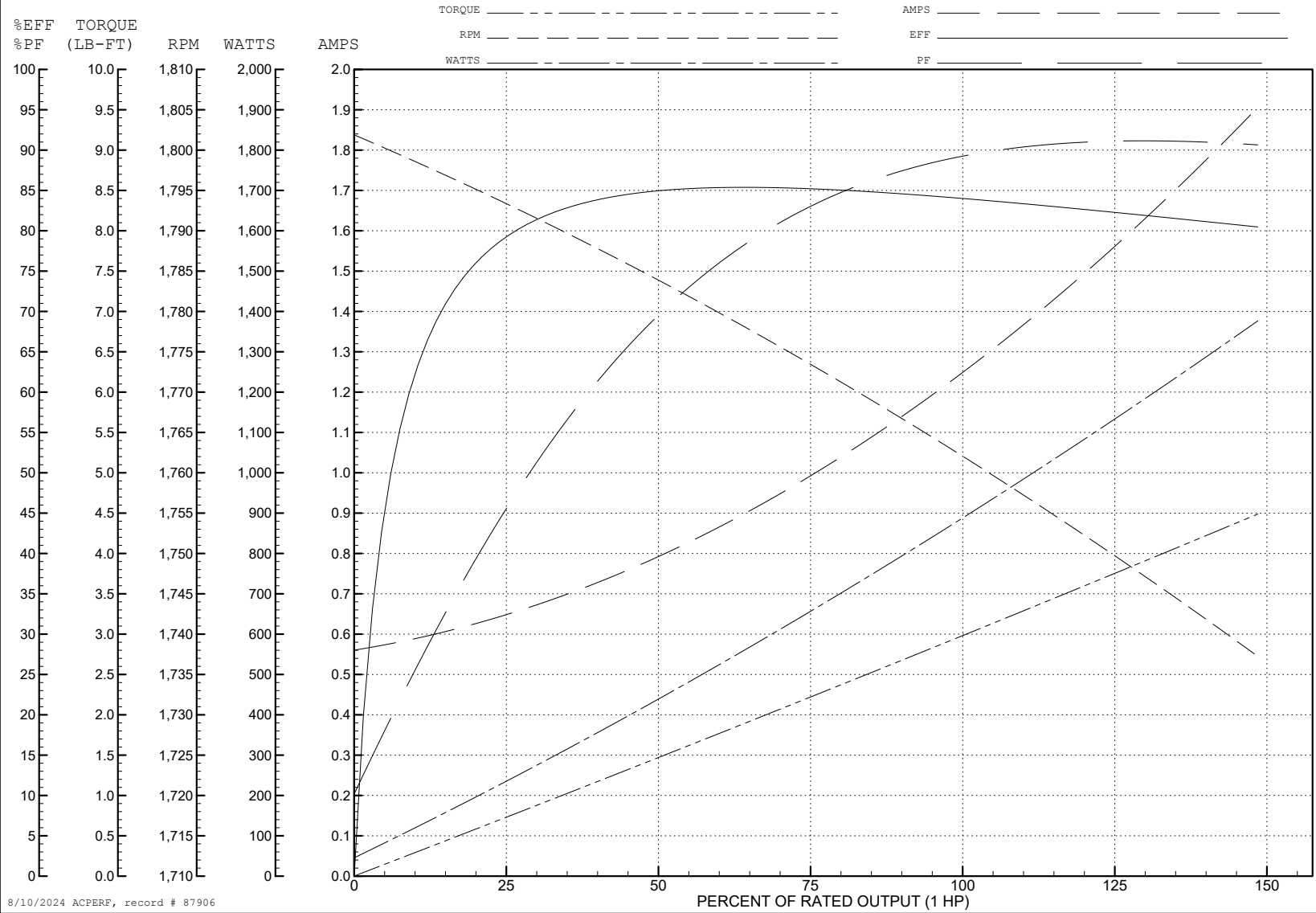
ABB Motors and Mechanical Inc.

WINDING # 35WGG369

Typical performance - not guaranteed values.

1 HP 3 PH 60 HZ 1762 RPM 460 V 3530M

TORQUES (LB-FT): PO=10.3 PU=4.82 LR=6.54 LRA=10.08



8/10/2024 ACPERF, record # 87906

AC Induction Motor Performance Data

Record # 87907

Typical performance - not guaranteed values

Winding: 35WGG369-R001		Type: 3530M	Enclosure: TEFC	
Nameplate Data			460 V, 60 Hz: Low Speed Connection	
Rated Output (HP)	1/5	Full Load Torque	2.99 LB-FT	
Volts	460	Start Configuration	direct on line	
Full Load Amps	1.28/1.55	Breakdown Torque	13.6 LB-FT	
R.P.M.	1760/860	Pull-up Torque	11.56 LB-FT	
Hz	60 Phase	Locked-rotor Torque	9.11 LB-FT	
NEMA Design Code	- KVA Code	Starting Current	6.96 A	
Service Factor (S.F.)	1.15	No-load Current	1.7 A	
NEMA Nom. Eff.	0 Power Factor	Line-line Res. @ 25°C	39.8 Ω	
Rating - Duty	40C AMB-CONT	Temp. Rise @ Rated Load		
		Locked-rotor Power Factor	78.6	
		Rotor inertia	0.217 lb-ft ²	

Load Characteristics 460 V, 60 Hz, 0.5 HP

% of Rated Load	25	50	75	100	125	150	S.F.
Power Factor	23	30	37	44	50	56	48
Efficiency	30.6	46.3	55.5	61.2	64.7	66.9	63.3
Speed	894.8	890.4	885.7	880.8	875.5	869.8	878
Line amperes	1.69	1.7	1.72	1.75	1.8	1.87	1.78

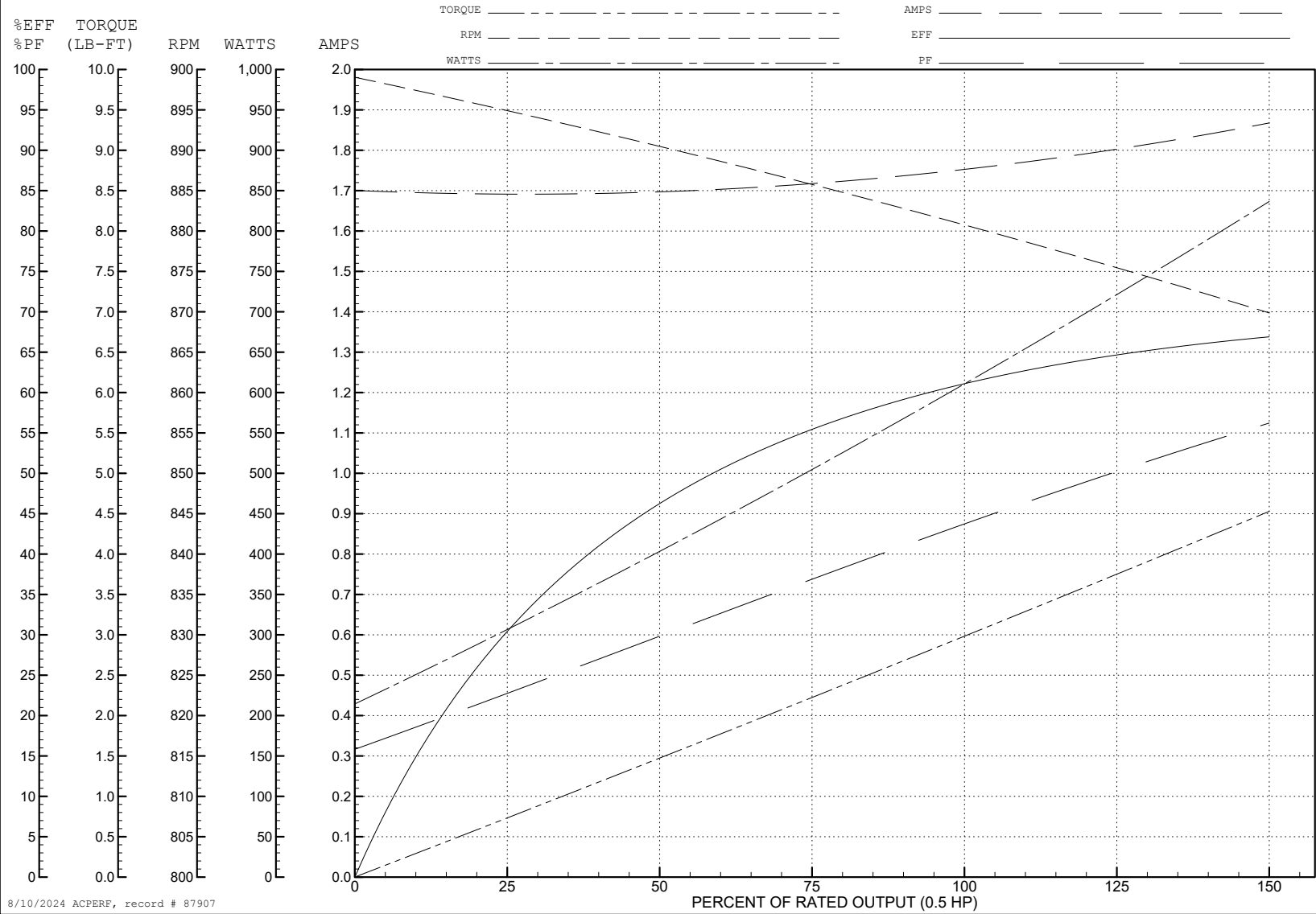
ABB Motors and Mechanical Inc.

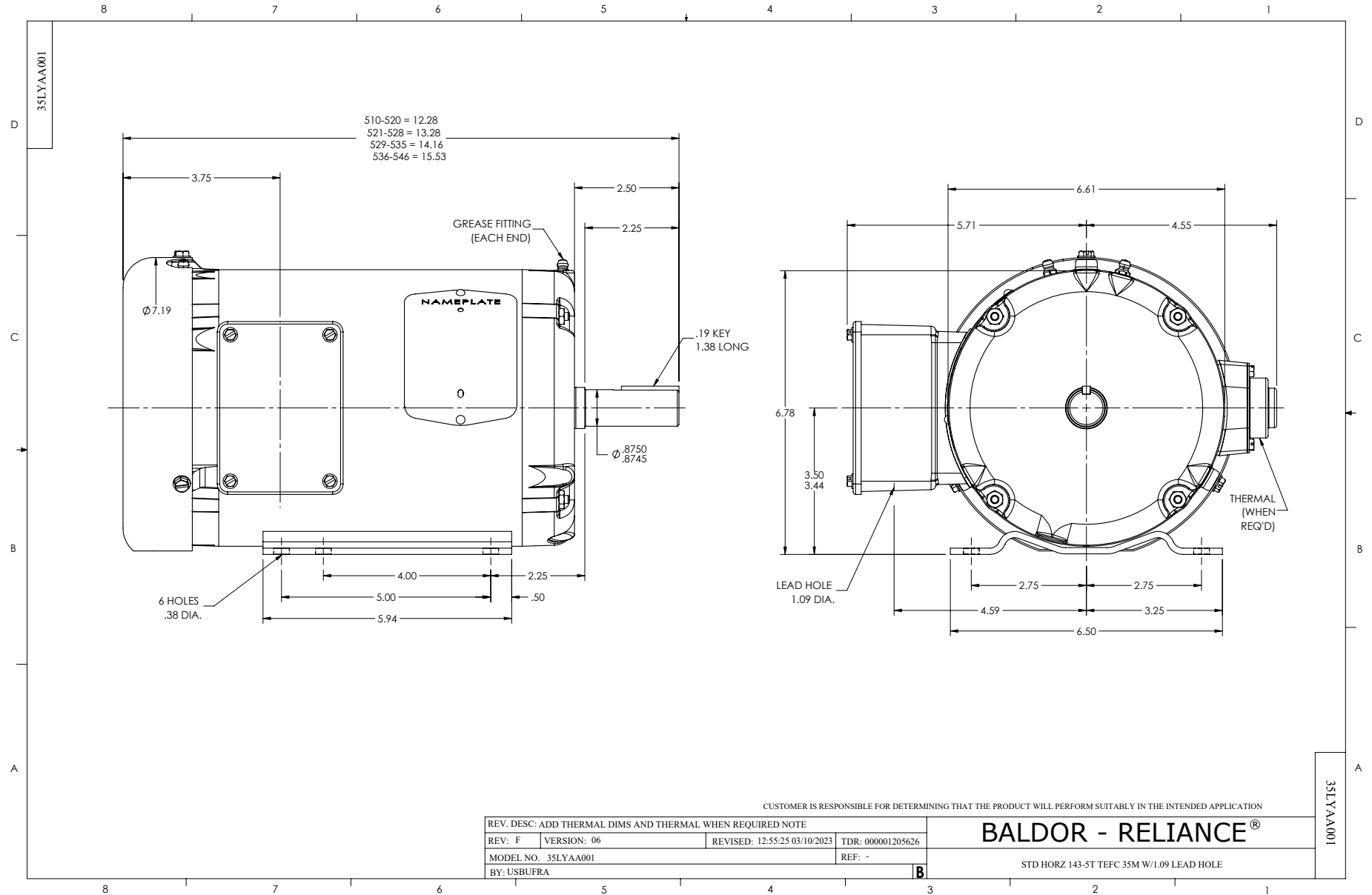
WINDING # 35WGG369

Typical performance - not guaranteed values.

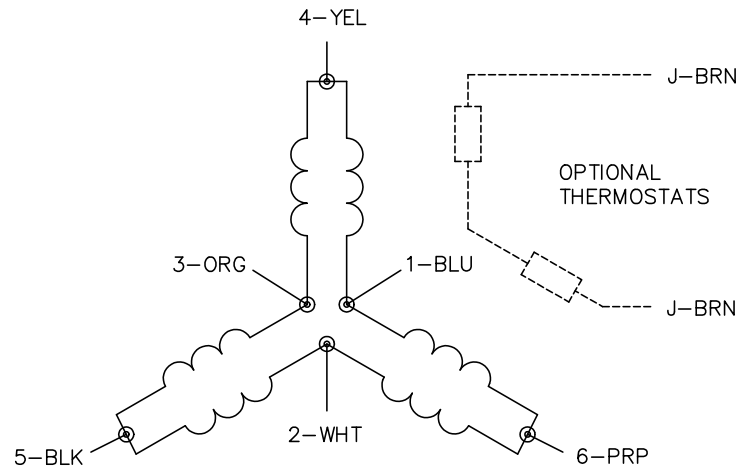
0.5 HP 3 PH 60 HZ 880.8 RPM 460 V 3530M

TORQUES (LB-FT): PO=13.6 PU=11.56 LR=9.11 LRA=6.96

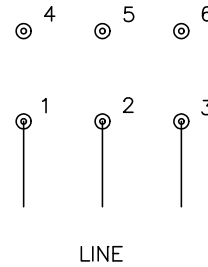




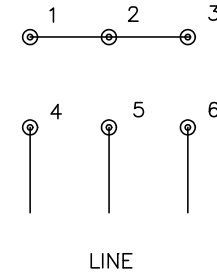
CD0011



LOW SPEED
(1D)



HIGH SPEED
(2Y)



NOTES:

1. INTERCHANGE ANY TWO LINE LEADS TO REVERSE ROTATION.
2. OPTIONAL THERMOSTATS ARE PROVIDED WHEN SPECIFIED.
3. ACTUAL NUMBER OF INTERNAL PARALLEL CIRCUITS MAY BE A MULTIPLE OF THOSE SHOWN ABOVE.
4. LEAD COLORS ARE OPTIONAL. LEADS MUST ALWAYS BE NUMBERED AS SHOWN.

CD0011

REV. DESC: REVISE TO SHOW OPTIONAL COLORS			
REV. LTR: F	BY: JLP	REVISED: 01/21/99 5:04	TDR: 0171435
110000		FILE: DWG\142.wg	MDL: -
		MTL: -	

BALDOR ELECTRIC Co.

3PH, SV, 6 LEADS, 2-SPEED 1-WINDING CONSTANT TORQUE