

# ABB BALDOR RELIANCE III

---

## Customer information packet

### M1558T

5/1.3HP, 1725/850RPM, 3PH, 60HZ, 184T, 3640M

Class - None

Division - Not Applicable

**Specifications**

<b>Enclosure</b>	TEFC
<b>Frame</b>	184T
<b>Frame Material</b>	Steel
<b>Frequency</b>	60.00 Hz
<b>Haz Area Class and Group</b>	None
<b>Haz Area Division</b>	Not Applicable
<b>Motor Letter Type</b>	Three Phase
<b>Output @ Frequency</b>	5.000 HP @ 60 HZ 1.300 HP @ 60 HZ
<b>Phase</b>	3
<b>Synchronous Speed @ Frequency</b>	900 RPM @ 60 HZ
<b>Voltage @ Frequency</b>	208.0 V @ 60 HZ 230.0 V @ 60 HZ
<b>Agency Approvals</b>	UR CSA
<b>Ambient Temperature</b>	40 °C
<b>Auxiliary Box</b>	NO AUXILLARY BOX
<b>Auxiliary Box Lead Termination</b>	None
<b>Base Indicator</b>	Rigid
<b>Bearing Grease Type</b>	Polyrex EM (-20F +300F)
<b>Blower</b>	None
<b>Current @ Voltage</b>	13.500 A @ 208.0 V 5.200 A @ 230.0 V
<b>Design Code</b>	B
<b>Drip Cover</b>	No Drip Cover
<b>Duty Rating</b>	CONT
<b>Electrically Isolated Bearing</b>	Not Electrically Isolated
<b>Feedback Device</b>	NO FEEDBACK
<b>Front Face Code</b>	Standard
<b>Front Shaft Indicator</b>	None
<b>Heater Indicator</b>	No Heater
<b>High Voltage Full Load Amps</b>	5.2 a

**Part Detail**

<b>Revision</b>	AE
<b>Type</b>	AC
<b>Mech. spec.</b>	36A001
<b>Base</b>	
<b>Status</b>	PRD/A
<b>Elec. spec.</b>	36WGX366
<b>Layout</b>	36LYA001
<b>Eff. date</b>	05-20-2025
<b>CD Diagram</b>	CD0032
<b>Poles</b>	04/08
<b>Leads</b>	6#14
<b>Proprietary</b>	False
<b>Created date</b>	01-01-0001

<b>Insulation Class</b>	H
<b>Inverter Code</b>	Not Inverter
<b>KVA Code</b>	K
<b>Lifting Lugs</b>	Standard Lifting Lugs
<b>Locked Bearing Indicator</b>	No Locked Bearing
<b>Motor Lead Exit</b>	Ko Box
<b>Motor Lead Quantity/Wire Size</b>	6 @ 14 AWG
<b>Motor Lead Termination</b>	Flying Leads
<b>Motor Standards</b>	NEMA
<b>Motor Type</b>	3640M
<b>Mounting Arrangement</b>	F1
<b>Number of Poles</b>	4 8
<b>Overall Length</b>	18.04 IN
<b>Product Family</b>	General Purpose
<b>Pulley End Bearing Type</b>	Ball
<b>Pulley Face Code</b>	Standard
<b>Pulley Shaft Indicator</b>	Standard
<b>Rodent Screen</b>	None
<b>Service Factor</b>	1.15
<b>Shaft Diameter</b>	1.125 IN
<b>Shaft Extension Location</b>	Pulley End
<b>Shaft Ground Indicator</b>	No Shaft Grounding
<b>Shaft Rotation</b>	Reversible
<b>Shaft Slinger Indicator</b>	No Slinger
<b>Speed</b>	1725 rpm 850 rpm
<b>Speed Code</b>	2S-1W-VT
<b>Starting Method</b>	Direct on line
<b>Thermal Device - Bearing</b>	None
<b>Thermal Device - Winding</b>	None
<b>Vibration Sensor Indicator</b>	No Vibration Sensor
<b>Winding Thermal 1</b>	None
<b>Winding Thermal 2</b>	None

**Nameplate**

<b>NP1256L</b>									
<b>CAT.NO.</b>	M1558T								
<b>SPEC.</b>	36A01X366								
<b>HP</b>	5/1.3								
<b>VOLTS</b>	208-230								
<b>AMP</b>	13.5/5.2								
<b>RPM</b>	1725/850								
<b>FRAME</b>	184T		<b>HZ</b>	60		<b>PH</b>	3		
<b>SER.F.</b>	1.15	<b>CODE</b>	K	<b>DES</b>	B	<b>CLASS</b>	H		
<b>NEMA-NOM-EFF</b>		<b>PF</b>							
<b>RATING</b>	40C AMB-CONT								
<b>CC</b>									
<b>DE</b>	6206		<b>ODE</b>	6205					
<b>ENCL</b>	TEFC	<b>SN</b>							

**Accessories**

<b>Part number</b>	<b>Description</b>	<b>Multiplier</b>
36-3301	C FACE KIT	A8
36EP1304A62SP	FLANGE MTD ENDPLATE 182-4TD -ENCL (LESS	A8

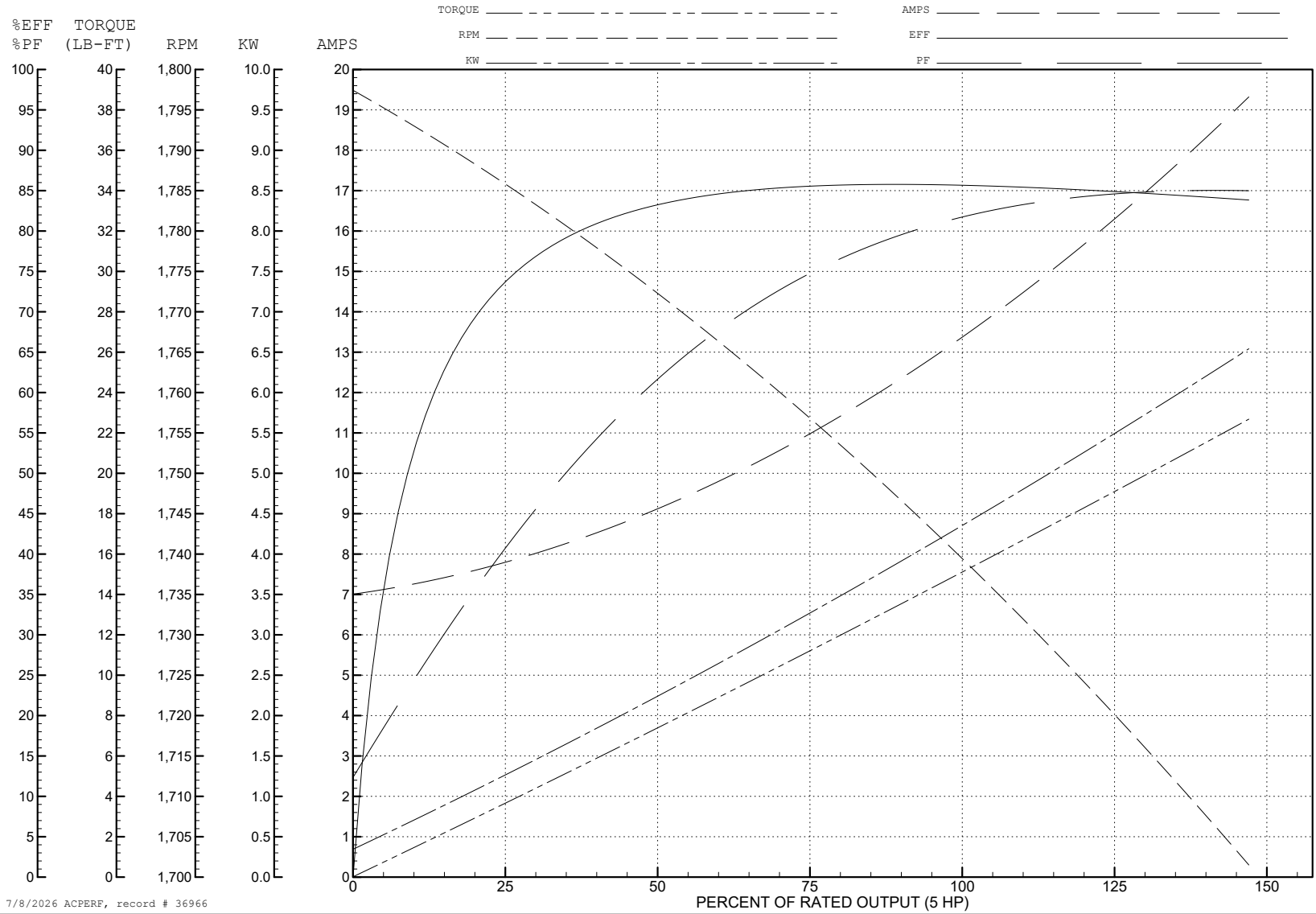
ABB Motors and Mechanical Inc.

WINDING # 36WGX366

Typical performance - not guaranteed values.

5 HP 3 PH 60 HZ 1741 RPM 230 V 3640M

TORQUES (LB-FT): PO=58 PU=34 LR=34 LRA=108



7/8/2026 ACPERF, record # 36966

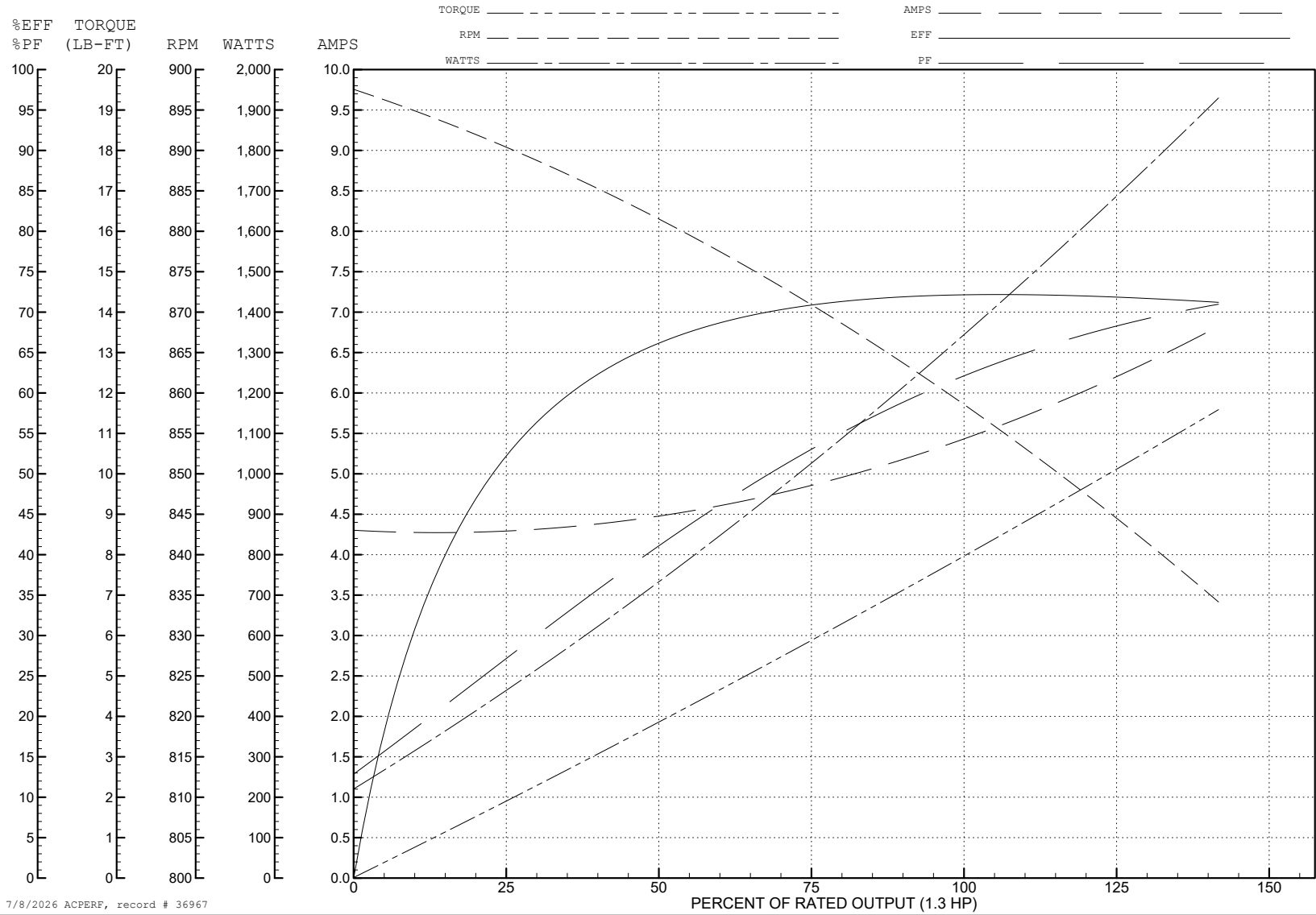
ABB Motors and Mechanical Inc.

WINDING # 36WX366

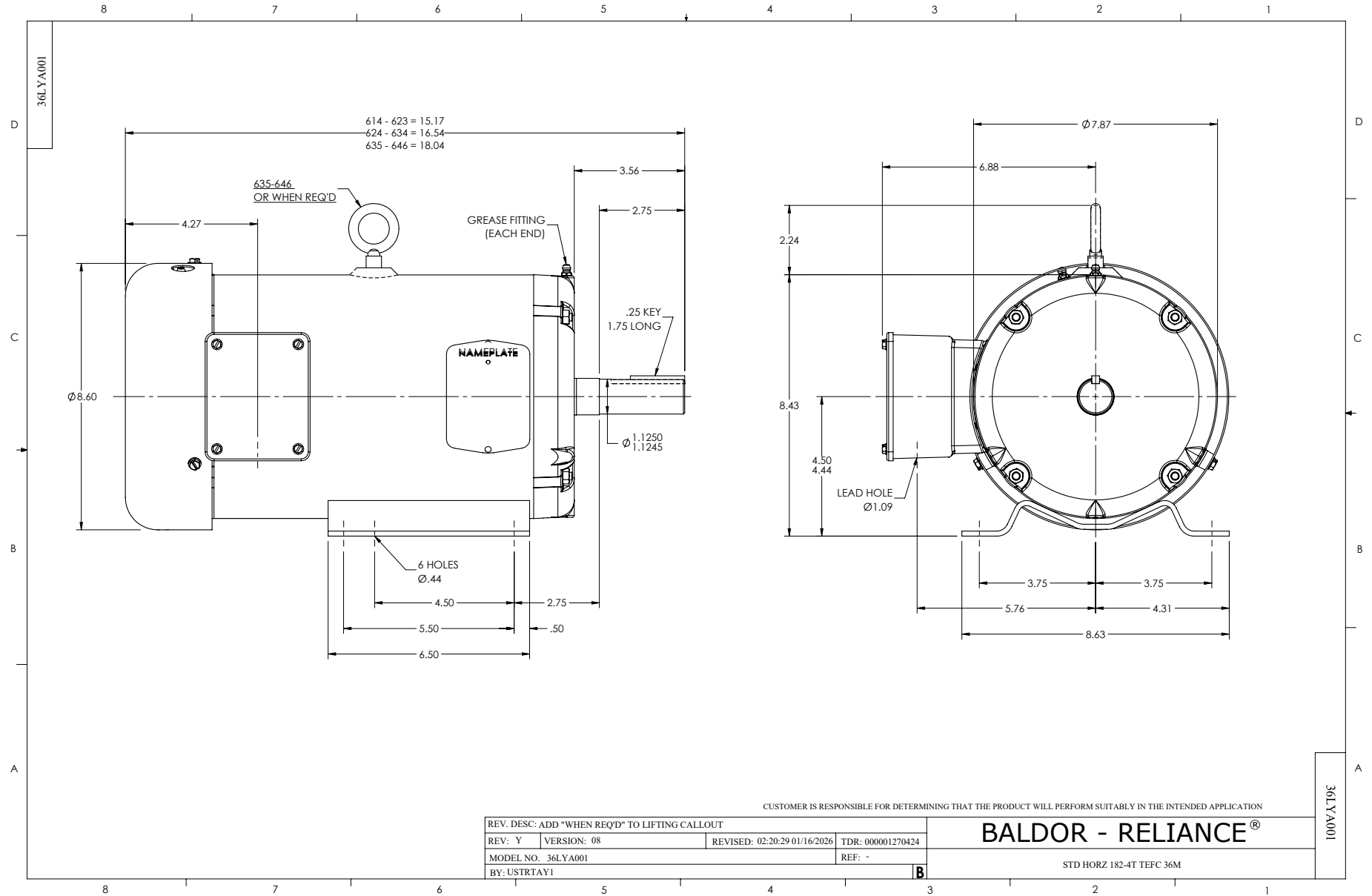
1.3 HP 3 PH 60 HZ 862 RPM 230 V 3640M

Typical performance - not guaranteed values.

TORQUES (LB-FT): PO=19.8 PU=12.5 LR=13 LRA=22



7/8/2026 ACPERF, record # 36967



CUSTOMER IS RESPONSIBLE FOR DETERMINING THAT THE PRODUCT WILL PERFORM SUITABLY IN THE INTENDED APPLICATION

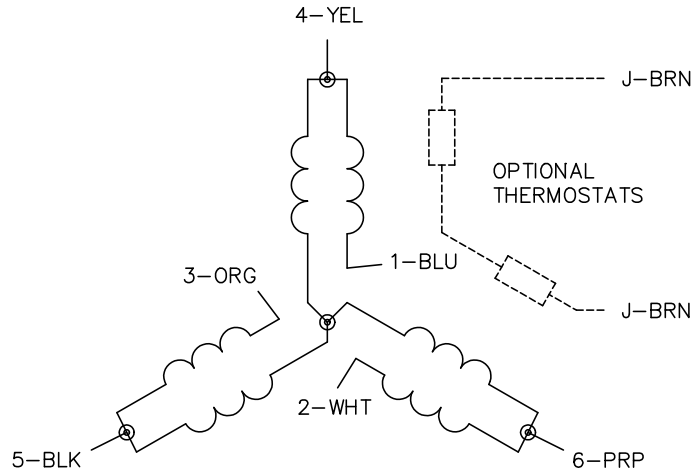
REV. DESC: ADD "WHEN REQ'D" TO LIFTING CALLOUT			
REV: Y	VERSION: 08	REVISED: 02:20:29 01/16/2026	TDR: 000001270424
MODEL NO. 36LYA001		REF: -	
BY: USTRTAY1			

**BALDOR - RELIANCE®**

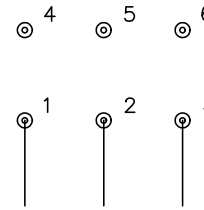
STD HORZ 182-4T TEFC 36M

36LYA001

CD0032

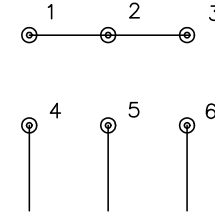


LOW SPEED  
(1Y)



LINE

HIGH SPEED  
(2Y)



LINE

**NOTES:**

1. INTERCHANGE ANY TWO LINE LEADS TO REVERSE ROTATION.
2. OPTIONAL THERMOSTATS ARE PROVIDED WHEN SPECIFIED.
3. ACTUAL NUMBER OF INTERNAL PARALLEL CIRCUITS MAY BE A MULTIPLE OF THOSE SHOWN ABOVE.
4. LEAD COLORS ARE OPTIONAL. LEADS MUST ALWAYS BE NUMBERED AS SHOWN.

CD0032

REV. DESC: REVISE TO SHOW OPTIONAL COLORS

REV. LTR: E

BY: JLP

REVISED: 01/22/99 8:27

TDR: 0171435

CD0032

FILE: AAA00005145

MDL: -

MTL: -

**BALDOR ELECTRIC Co.**

3PH, SV, 6 LEADS, 2-SPEED 1-WINDING VARIABLE TORQUE