



Customer information packet

M1557T

3/.75HP, 1725/850RPM, 3PH, 60HZ, 184T, 3628M

Class - None

Division - Not Applicable

Specifications

Enclosure	TEFC
Frame	184T
Frame Material	Steel
Frequency	60.00 Hz
Haz Area Class and Group	None
Haz Area Division	Not Applicable
Motor Letter Type	Three Phase
Output @ Frequency	3.000 HP @ 60 HZ .750 HP @ 60 HZ
Phase	3
Synchronous Speed @ Frequency	900 RPM @ 60 HZ
Voltage @ Frequency	208.0 V @ 60 HZ 230.0 V @ 60 HZ
Agency Approvals	UR CSA
Ambient Temperature	40 °C
Auxillary Box	No Auxillary Box
Auxillary Box Lead Termination	None
Base Indicator	Rigid
Bearing Grease Type	Polyrex EM (-20F +300F)
Blower	None
Current @ Voltage	3.000 A @ 230.0 V 8.000 A @ 208.0 V
Design Code	B
Drip Cover	No Drip Cover
Duty Rating	CONT
Electrically Isolated Bearing	Not Electrically Isolated
Feedback Device	NO FEEDBACK
Front Face Code	Standard
Front Shaft Indicator	None
Heater Indicator	No Heater
High Voltage Full Load Amps	3.0 a

Part detail

Revision	Y
Type	AC
Mech. spec.	36A001
Base	
Status	PRD/A
Elec. spec.	36WGX365
Layout	36LYA001
Eff. date	05-08-2024
CD Diagram	CD0032
Poles	04/08
Leads	6#16
Proprietary	False
Created date	01-01-0001

Insulation Class	F
Inverter Code	Not Inverter
KVA Code	G
Lifting Lugs	No Lifting Lugs
Locked Bearing Indicator	No Locked Bearing
Motor Lead Exit	Ko Box
Motor Lead Quantity/Wire Size	6 @ 16 AWG
Motor Lead Termination	Flying Leads
Motor Standards	NEMA
Motor Type	3628M
Mounting Arrangement	F1
Number of Poles	4 8
Overall Length	16.54 IN
Product Family	General Purpose
Pulley End Bearing Type	Ball
Pulley Face Code	Standard
Pulley Shaft Indicator	Standard
Rodent Screen	None
Service Factor	1.15
Shaft Diameter	1.125 IN
Shaft Extension Location	Pulley End
Shaft Ground Indicator	No Shaft Grounding
Shaft Rotation	Reversible
Shaft Slinger Indicator	No Slinger
Speed	1725 rpm 850 rpm
Speed Code	2S-1W-VT
Starting Method	Direct on line
Thermal Device - Bearing	None
Thermal Device - Winding	None
Vibration Sensor Indicator	No Vibration Sensor
Winding Thermal 1	None
Winding Thermal 2	None

Nameplate

NP1256L									
CAT.NO.	M1557T								
SPEC.	36A01X365								
HP	3/.75								
VOLTS	208-230								
AMP	8/3								
RPM	1725/850								
FRAME	184T		HZ	60		PH	3		
SER.F.	1.15	CODE	G	DES	B	CLASS	F		
NEMA-NOM-EFF		PF							
RATING	40C AMB-CONT								
CC									
DE	6206		ODE	6205					
ENCL	TEFC	SN							

Accessories

Part number	Description	Multiplier
36-3301	C FACE KIT	A8
36EP1304A62SP	FLANGE MTD ENDPLATE 182-4TD -ENCL (LESS	A8

AC Induction Motor Performance Data

Record # 36963

Typical performance - not guaranteed values

Winding: 36WGX365-R003		Type: 3628M		Enclosure: TEFC	
Nameplate Data			230 V, 60 Hz: High Speed Connection		
Rated Output (HP)	3/.75		Full Load Torque	9.3 LB-FT	
Volts	208-230		Start Configuration	direct on line	
Full Load Amps	8/3		Breakdown Torque	24 LB-FT	
R.P.M.	1725/850		Pull-up Torque	17 LB-FT	
Hz	60 Phase	3	Locked-rotor Torque	19 LB-FT	
NEMA Design Code	B KVA Code	G	Starting Current	48 A	
Service Factor (S.F.)	1.15		No-load Current	3.4 A	
NEMA Nom. Eff.	0 Power Factor	0	Line-line Res. @ 25°C	1.99 Ω	
Rating - Duty	40C AMB-CONT		Temp. Rise @ Rated Load	84°C	
S.F. Amps			Temp. Rise @ S.F. Load	105°C	

Load Characteristics 230 V, 60 Hz, 3 HP

% of Rated Load	25	50	75	100	125	150	S.F.
Power Factor	53	75	84	89	89	88	89
Efficiency	73.6	81	82.1	80.9	78.5	75.5	79.5
Speed	1775	1752	1725	1695	1660	1617	1674
Line amperes	3.8	4.8	6.2	7.8	9.8	12.2	9

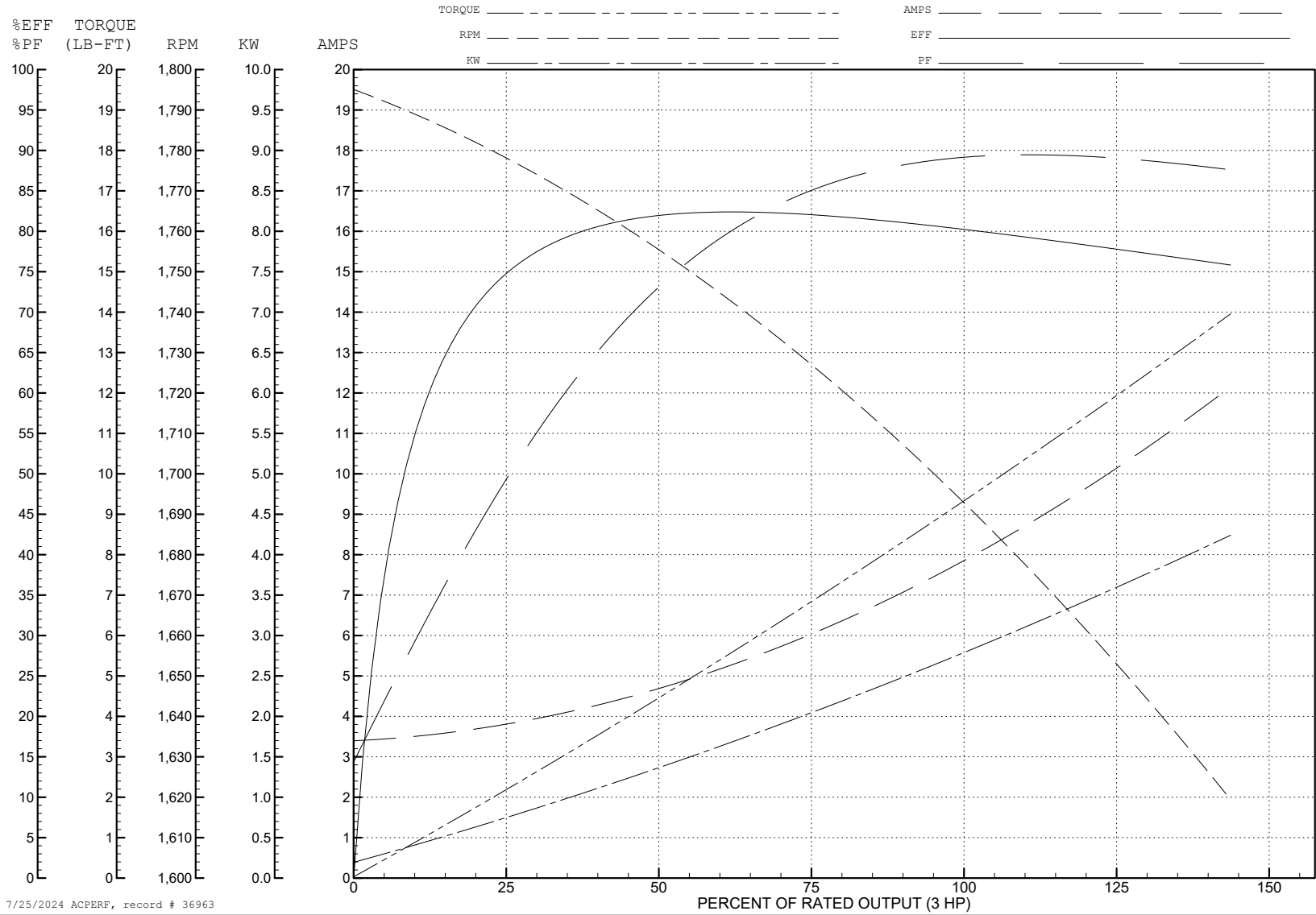
ABB Motors and Mechanical Inc.

WINDING # 36WGX365

3 HP 3 PH 60 HZ 1695 RPM 230 V 3628M

Typical performance - not guaranteed values.

TORQUES (LB-FT): PO=24 PU=17 LR=19 LRA=48



7/25/2024 ACPERF, record # 36963

AC Induction Motor Performance Data

Record # 36964

Typical performance - not guaranteed values

Winding: 36WGX365-R003		Type: 3628M	Enclosure: TEFC		
Nameplate Data			230 V, 60 Hz: Low Speed Connection		
Rated Output (HP)	3/.75	Full Load Torque	4.7 LB-FT		
Volts	208-230	Start Configuration	direct on line		
Full Load Amps	8/3	Breakdown Torque	10 LB-FT		
R.P.M.	1725/850	Pull-up Torque	7 LB-FT		
Hz	60 Phase	3	Locked-rotor Torque	8.1 LB-FT	
NEMA Design Code	B	KVA Code	G	Starting Current	10.8 A
Service Factor (S.F.)	1.15		No-load Current	2.2 A	
NEMA Nom. Eff.	0	Power Factor	0	Line-line Res. @ 25°C	7.95 Ω
Rating - Duty	40C AMB-CONT		Temp. Rise @ Rated Load	56°C	
S.F. Amps			Temp. Rise @ S.F. Load	66°C	

Load Characteristics 230 V, 60 Hz, 0.75 HP

% of Rated Load	25	50	75	100	125	150	S.F.
Power Factor	32	46	59	70	72	75	71
Efficiency	52.4	66	70.9	71.8	70.7	67.5	71.1
Speed	887	875	861	845	826	801	834
Line amperes	2.2	2.4	2.6	2.8	3.4	4	3.16

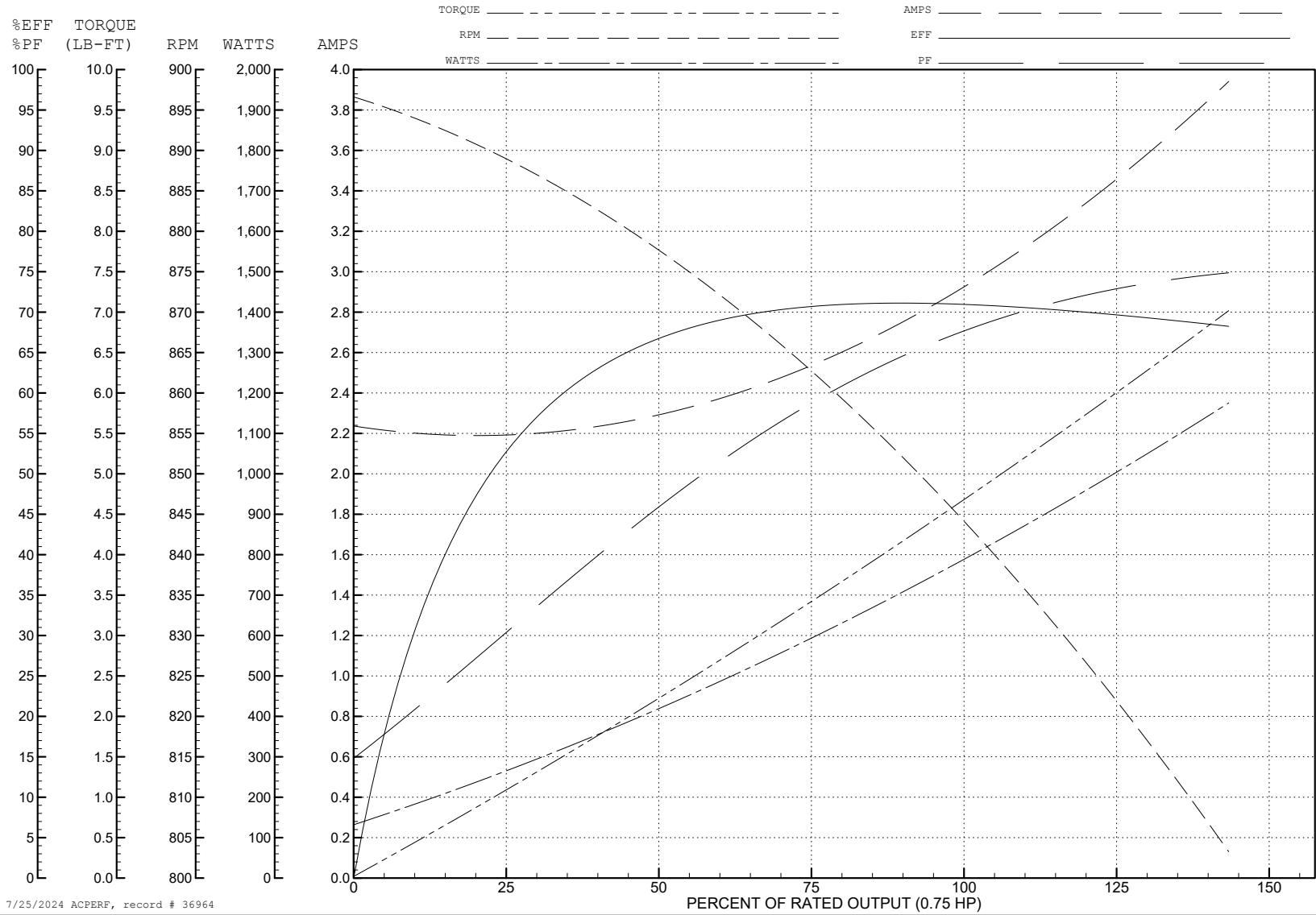
ABB Motors and Mechanical Inc.

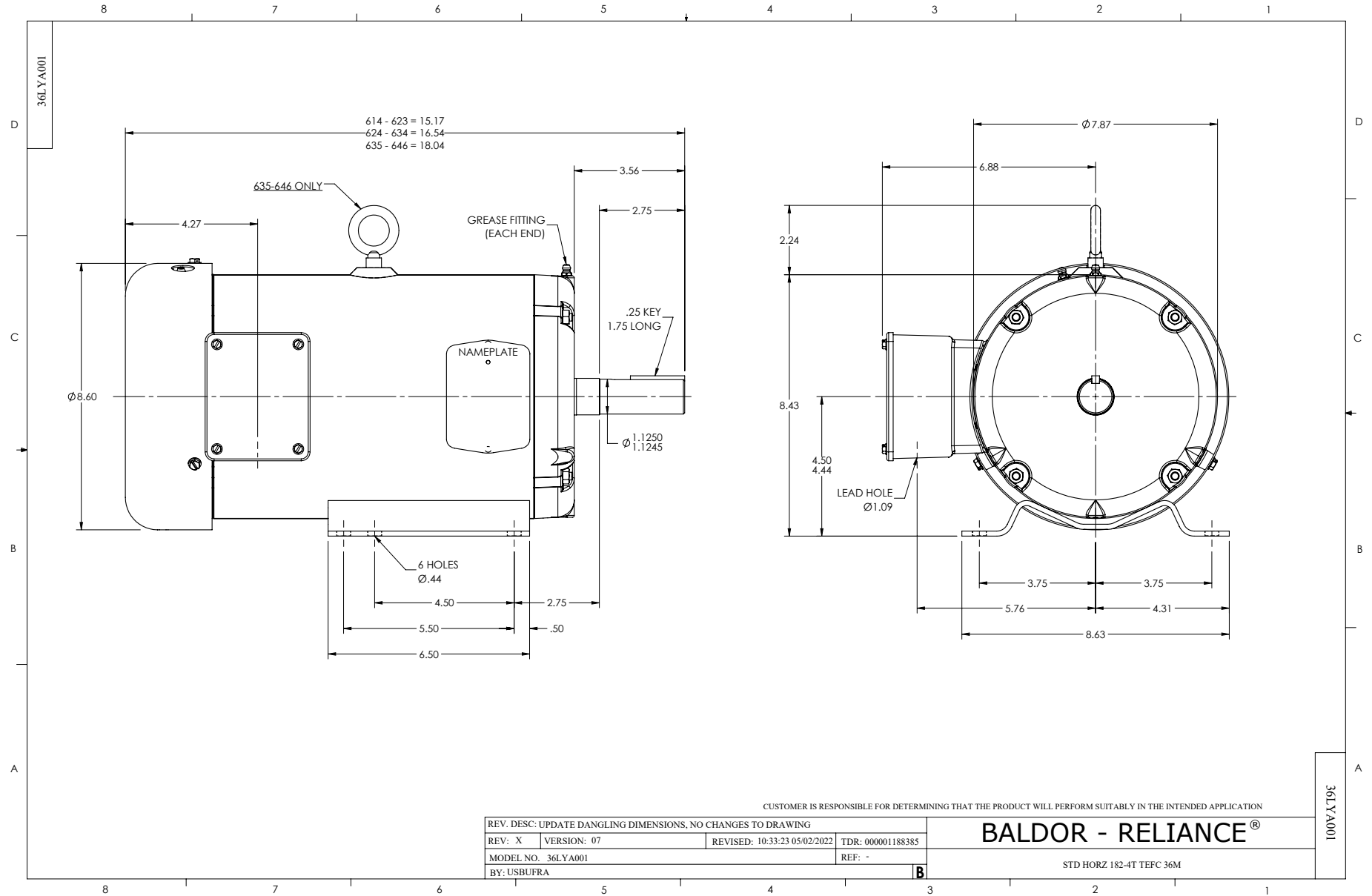
WINDING # 36WGX365

0.75 HP 3 PH 60 HZ 845 RPM 230 V 3628M

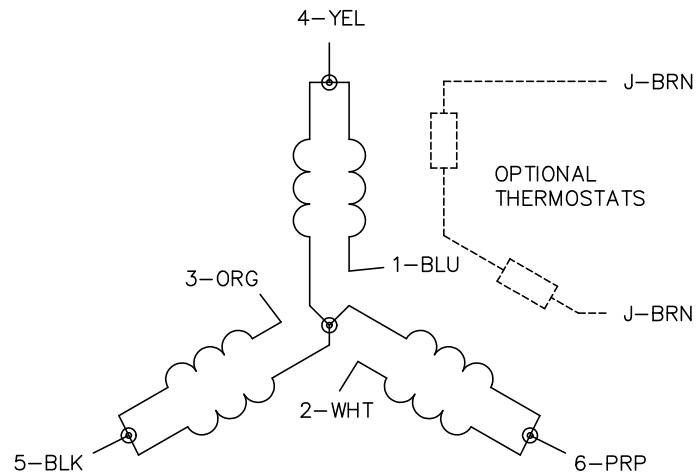
Typical performance - not guaranteed values.

TORQUES (LB-FT): PO=10 PU=7 LR=8.1 LRA=10.8

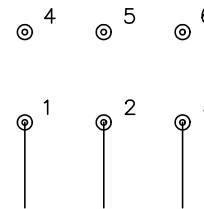




CD0032

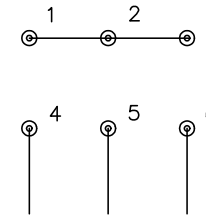


LOW SPEED
(1Y)



LINE

HIGH SPEED
(2Y)



LINE

NOTES:

1. INTERCHANGE ANY TWO LINE LEADS TO REVERSE ROTATION.
2. OPTIONAL THERMOSTATS ARE PROVIDED WHEN SPECIFIED.
3. ACTUAL NUMBER OF INTERNAL PARALLEL CIRCUITS MAY BE A MULTIPLE OF THOSE SHOWN ABOVE.
4. LEAD COLORS ARE OPTIONAL. LEADS MUST ALWAYS BE NUMBERED AS SHOWN.

REV. DESC: REVISE TO SHOW OPTIONAL COLORS			
REV. LTR: E	BY: JLP	REVISED: 01/22/99 8:27	TDR: 0171435
CD0032		FILE: AAA00005145	MDL: -
		MTL: -	

BALDOR ELECTRIC Co.

3PH, SV, 6 LEADS, 2-SPEED 1-WINDING VARIABLE TORQUE

CD0032