

# ABB BALDOR RELIANCE III

---

## Customer information packet

M1524T

5/2.2HP, 1725/1140RPM, 3PH, 60HZ, 215T, 3740M

Class - None

Division - Not Applicable

**Specifications**

<b>Enclosure</b>	TEFC
<b>Frame</b>	215T
<b>Frame Material</b>	Steel
<b>Frequency</b>	60.00 Hz
<b>Haz Area Class and Group</b>	None
<b>Haz Area Division</b>	Not Applicable
<b>Motor Letter Type</b>	Three Phase
<b>Output @ Frequency</b>	5.000 HP @ 60 HZ 2.200 HP @ 60 HZ
<b>Phase</b>	3
<b>Synchronous Speed @ Frequency</b>	1200 RPM @ 60 HZ
<b>Voltage @ Frequency</b>	230.0 V @ 60 HZ
<b>Agency Approvals</b>	UR CSA
<b>Ambient Temperature</b>	40 °C
<b>Auxiliary Box</b>	NO AUXILLARY BOX
<b>Auxiliary Box Lead Termination</b>	None
<b>Base Indicator</b>	Rigid
<b>Bearing Grease Type</b>	Polyrex EM (-20F +300F)
<b>Blower</b>	None
<b>Current @ Voltage</b>	12.800 A @ 230.0 V
<b>Design Code</b>	B
<b>Drip Cover</b>	No Drip Cover
<b>Duty Rating</b>	CONT
<b>Electrically Isolated Bearing</b>	Not Electrically Isolated
<b>Feedback Device</b>	NO FEEDBACK
<b>Front Shaft Indicator</b>	None
<b>Heater Indicator</b>	No Heater
<b>High Voltage Full Load Amps</b>	7.0 a
<b>Insulation Class</b>	F
<b>Inverter Code</b>	Not Inverter
<b>KVA Code</b>	K

**Part Detail**

<b>Revision</b>	E
<b>Type</b>	AC
<b>Mech. spec.</b>	37T397
<b>Base</b>	
<b>Status</b>	PRD/A
<b>Elec. spec.</b>	37WGX673
<b>Layout</b>	37LYT397
<b>Eff. date</b>	05-14-2024
<b>CD Diagram</b>	CD0013
<b>Poles</b>	04/06
<b>Leads</b>	6#14
<b>Proprietary</b>	False
<b>Created date</b>	06-11-2019

<b>Lifting Lugs</b>	Standard Lifting Lugs
<b>Locked Bearing Indicator</b>	No Locked Bearing
<b>Motor Lead Quantity/Wire Size</b>	6 @ 14 AWG
<b>Motor Lead Termination</b>	Flying Leads
<b>Motor Standards</b>	NEMA
<b>Motor Type</b>	3740M
<b>Mounting Arrangement</b>	F1
<b>Number of Poles</b>	4 6
<b>Overall Length</b>	19.01 IN
<b>Product Family</b>	General Purpose
<b>Pulley End Bearing Type</b>	Ball
<b>Pulley Face Code</b>	Standard
<b>Pulley Shaft Indicator</b>	Standard
<b>Rodent Screen</b>	None
<b>Service Factor</b>	1.15
<b>Shaft Diameter</b>	1.375 IN
<b>Shaft Ground Indicator</b>	No Shaft Grounding
<b>Shaft Rotation</b>	Reversible
<b>Shaft Slinger Indicator</b>	No Slinger
<b>Speed</b>	1140 rpm 1725 rpm
<b>Speed Code</b>	2S-2W-VT
<b>Starting Method</b>	Direct on line
<b>Thermal Device - Bearing</b>	None
<b>Thermal Device - Winding</b>	None
<b>Vibration Sensor Indicator</b>	No Vibration Sensor
<b>Winding Thermal 1</b>	None
<b>Winding Thermal 2</b>	None

**Nameplate**

<b>NP1256L</b>										
<b>CAT.NO.</b>	M1524T									
<b>SPEC.</b>	37T397X673G1									
<b>HP</b>	5/2.2									
<b>VOLTS</b>	230									
<b>AMP</b>	12.8/7									
<b>RPM</b>	1725/1140									
<b>FRAME</b>	215T		<b>HZ</b>	60		<b>PH</b>	3			
<b>SER.F.</b>	1.15	<b>CODE</b>	K	<b>DES</b>	B	<b>CLASS</b>	F			
<b>NEMA-NOM-EFF</b>		<b>PF</b>								
<b>RATING</b>	40C AMB-CONT									
<b>CC</b>										
<b>DE</b>	6307		<b>ODE</b>	6206						
<b>ENCL</b>	TEFC	<b>SN</b>								

**Accessories**

<b>Part number</b>	<b>Description</b>	<b>Multiplier</b>
37-3301	C FACE KIT	

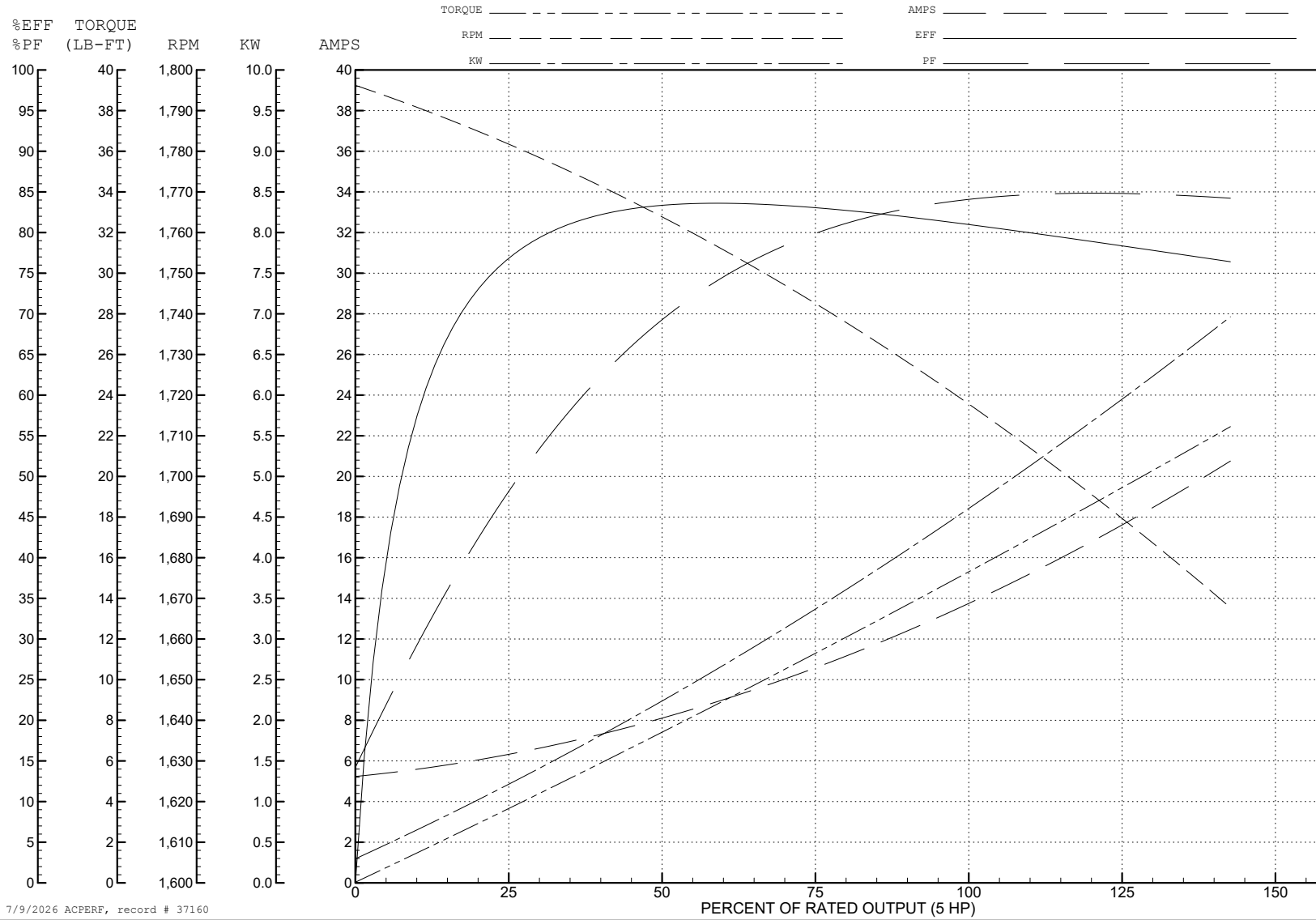
ABB Motors and Mechanical Inc.

WINDING # 37WGX673

5 HP 3 PH 60 HZ 1721 RPM 230 V 3740M

Typical performance - not guaranteed values.

TORQUES (LB-FT): PO=51 PU=36 LR=51 LRA=115



7/9/2026 ACPERF, record # 37160

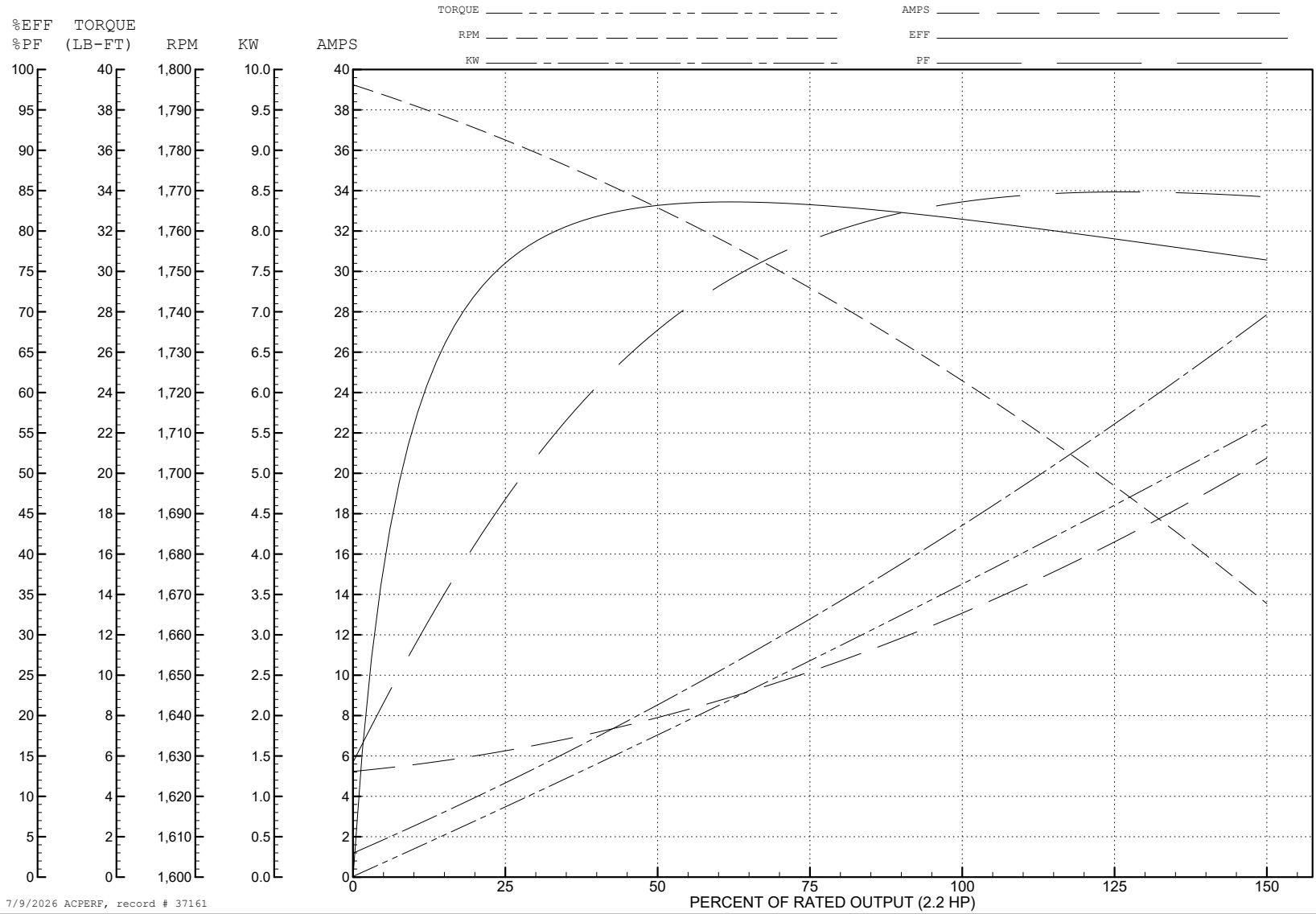
ABB Motors and Mechanical Inc.

WINDING # 37WGX673

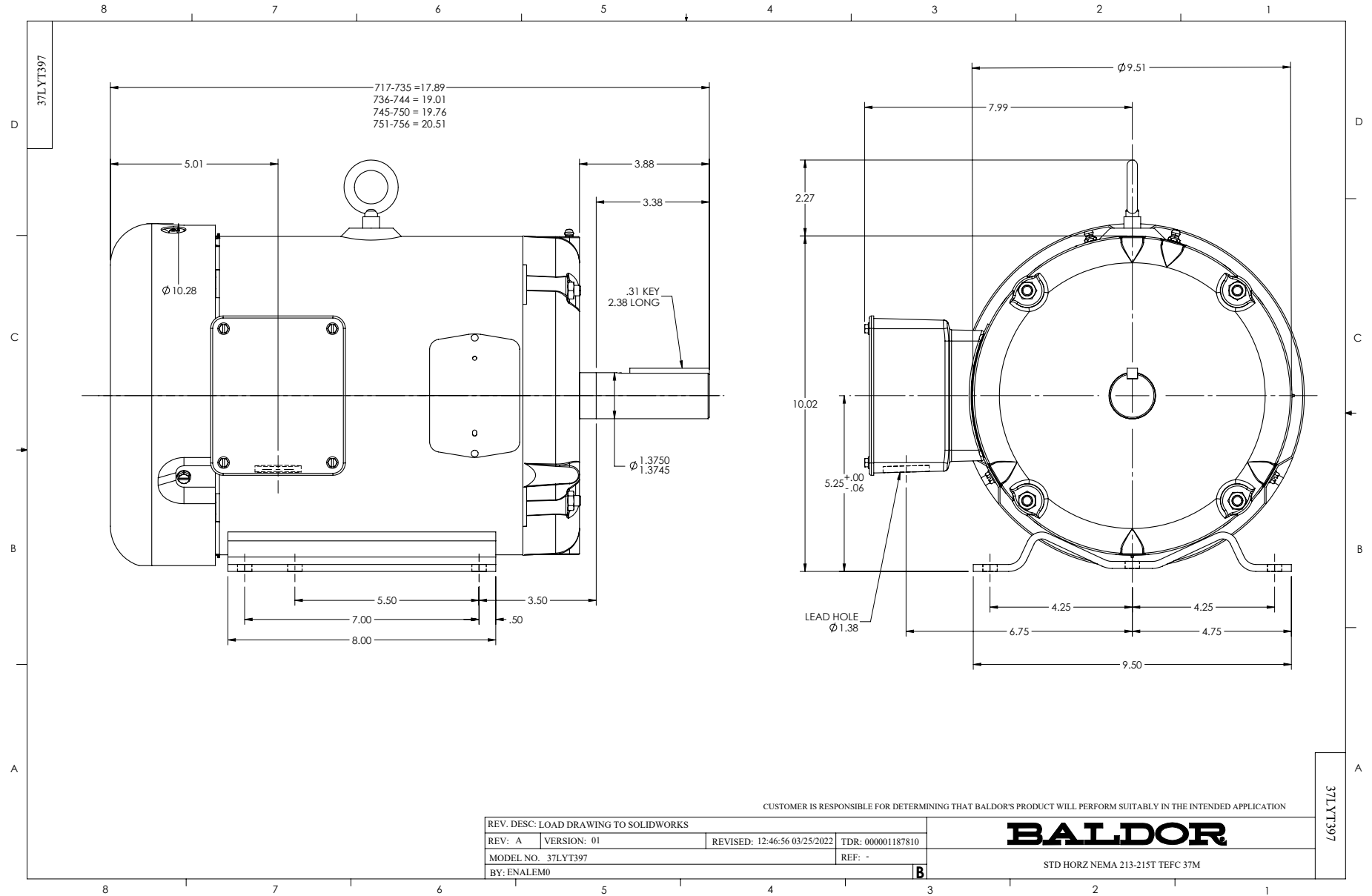
Typical performance - not guaranteed values.

2.2 HP 3 PH 60 HZ 1721 RPM 230 V 3740M

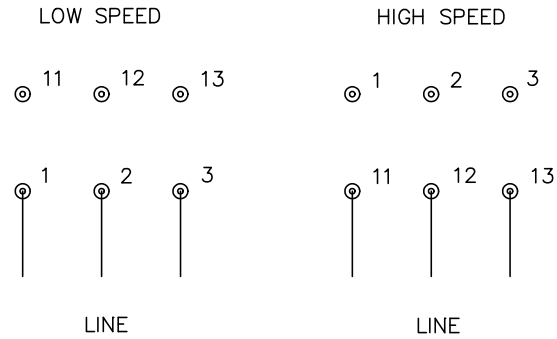
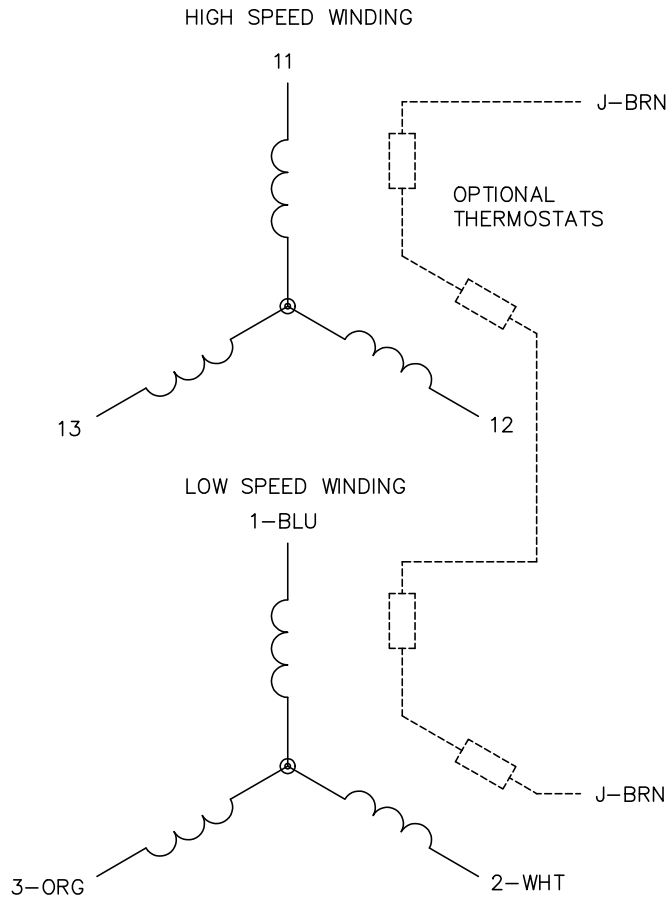
TORQUES (LB-FT): PO=51 PU=36 LR=51 LRA=115



7/9/2026 ACPERF, record # 37161



CD0013



**NOTES:**

1. INTERCHANGE ANY TWO LINE LEADS TO REVERSE ROTATION.
2. OPTIONAL THERMOSTATS ARE PROVIDED WHEN SPECIFIED.
3. ACTUAL NUMBER OF INTERNAL PARALLEL CIRCUITS MAY VARY.
4. LEAD COLORS ARE OPTIONAL. LEADS MUST ALWAYS BE NUMBERED AS SHOWN.

CD0013

REV. DESC: REVISE TO SHOW OPTIONAL COLORS			
REV. LTR: D	BY: JLP	REVISED: 01/22/99 8:50	TDR: 0171435
FILE: AAA00005143		MDL: -	
MTL: -			

**BALDOR ELECTRIC Co.**

3PH, SV, 6 LEADS, 2-SPEED 2-WINDING