

ABB BALDOR RELIANCE III

Customer information packet

M1522T

2/.89HP, 1725/1140RPM, 3PH, 60HZ, 182T, 3628M

Class - None

Division - Not Applicable

Specifications

Enclosure	TEFC
Frame	182T
Frame Material	Steel
Frequency	60.00 Hz
Haz Area Class and Group	None
Haz Area Division	Not Applicable
Motor Letter Type	Three Phase
Output @ Frequency	2.000 HP @ 60 HZ .890 HP @ 60 HZ
Phase	3
Synchronous Speed @ Frequency	1800 RPM @ 60 HZ
Voltage @ Frequency	230.0 V @ 60 HZ
Agency Approvals	UR CSA
Ambient Temperature	40 °C
Auxiliary Box	NO AUXILLARY BOX
Auxiliary Box Lead Termination	None
Base Indicator	Rigid
Bearing Grease Type	Polyrex EM (-20F +300F)
Blower	None
Current @ Voltage	5.800 A @ 230.0 V
Design Code	B
Drip Cover	No Drip Cover
Duty Rating	CONT
Electrically Isolated Bearing	Not Electrically Isolated
Feedback Device	NO FEEDBACK
Front Face Code	Standard
Front Shaft Indicator	None
Heater Indicator	No Heater
High Voltage Full Load Amps	3.2 a
Insulation Class	F
Inverter Code	Not Inverter

Part Detail

Revision	AD
Type	AC
Mech. spec.	36A001
Base	
Status	PRD/A
Elec. spec.	36WGW065
Layout	36LYA001
Eff. date	05-20-2025
CD Diagram	CD0013
Poles	04/06
Leads	6#16
Proprietary	False
Created date	01-01-0001

KVA Code	F
Lifting Lugs	No Lifting Lugs
Locked Bearing Indicator	No Locked Bearing
Motor Lead Exit	Ko Box
Motor Lead Quantity/Wire Size	6 @ 16 AWG
Motor Lead Termination	Flying Leads
Motor Standards	NEMA
Motor Type	3628M
Mounting Arrangement	F1
Number of Poles	4 6
Overall Length	16.54 IN
Product Family	General Purpose
Pulley End Bearing Type	Ball
Pulley Face Code	Standard
Pulley Shaft Indicator	Standard
Rodent Screen	None
Service Factor	1.15
Shaft Diameter	1.125 IN
Shaft Extension Location	Pulley End
Shaft Ground Indicator	No Shaft Grounding
Shaft Rotation	Reversible
Shaft Slinger Indicator	No Slinger
Speed	1140 rpm 1725 rpm
Speed Code	2S-2W-VT
Starting Method	Direct on line
Thermal Device - Bearing	None
Thermal Device - Winding	None
Vibration Sensor Indicator	No Vibration Sensor
Winding Thermal 1	None
Winding Thermal 2	None

Nameplate

NP1256L										
CAT.NO.	M1522T									
SPEC.	36A01W65									
HP	2/.89									
VOLTS	208-230									
AMP	5.8/3.2									
RPM	1725/1140									
FRAME	182T		HZ	60		PH	3			
SER.F.	1.15	CODE	F	DES	B	CLASS	F			
NEMA-NOM-EFF		PF								
RATING	40C AMB-CONT									
CC										
DE	6206		ODE	6205						
ENCL	TEFC	SN								

Accessories

Part number	Description	Multiplier
36-3301	C FACE KIT	
36EP1304A62SP	FLANGE MTD ENDPLATE 182-4TD -ENCL (LESS	

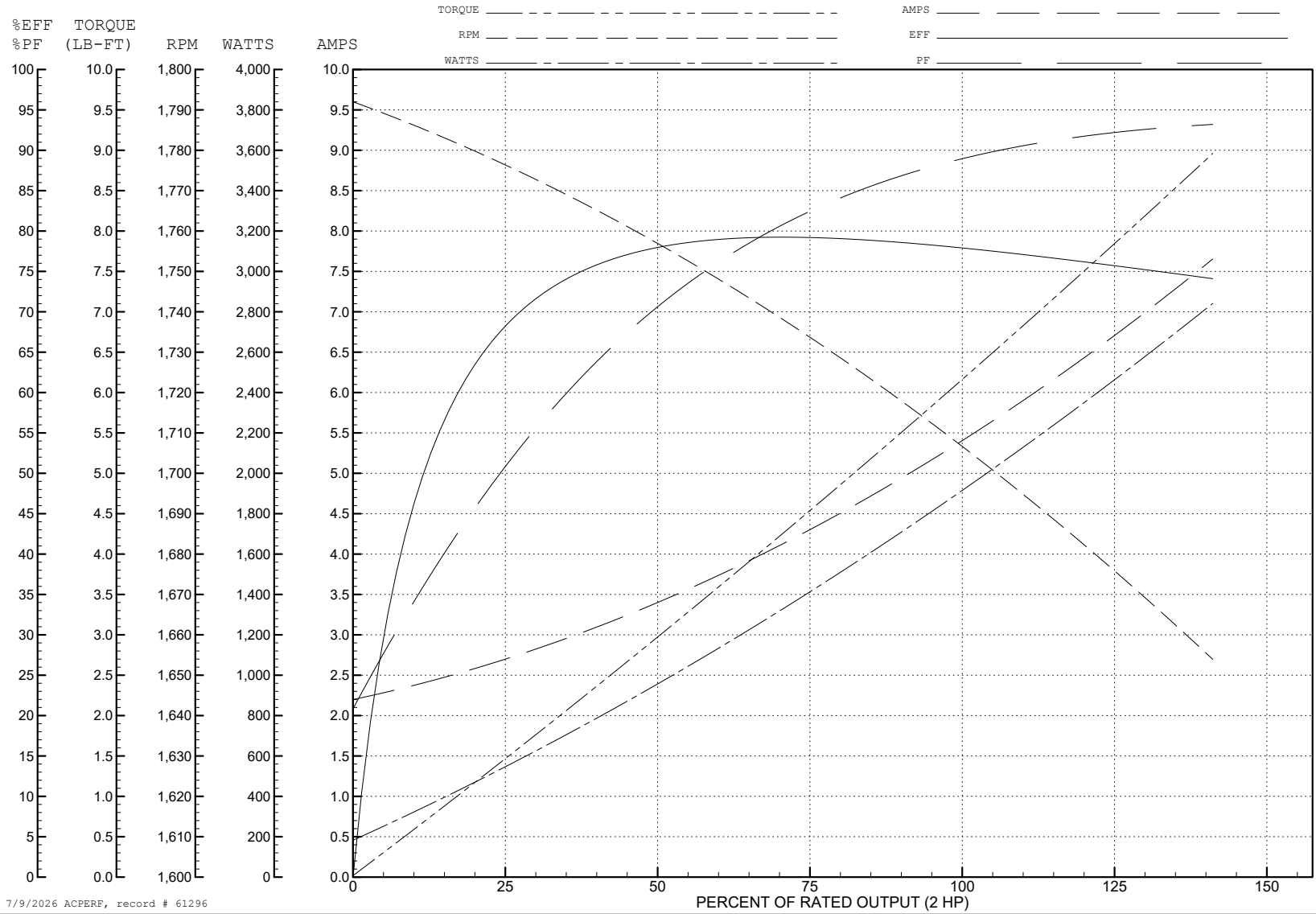
ABB Motors and Mechanical Inc.

WINDING # 36WGW065

Typical performance - not guaranteed values.

2 HP 3 PH 60 HZ 1710 RPM 230 V 3628M

TORQUES (LB-FT): PO=16.5 PU=12.7 LR=14.7 LRA=33.4



7/9/2026 ACPERF, record # 61296

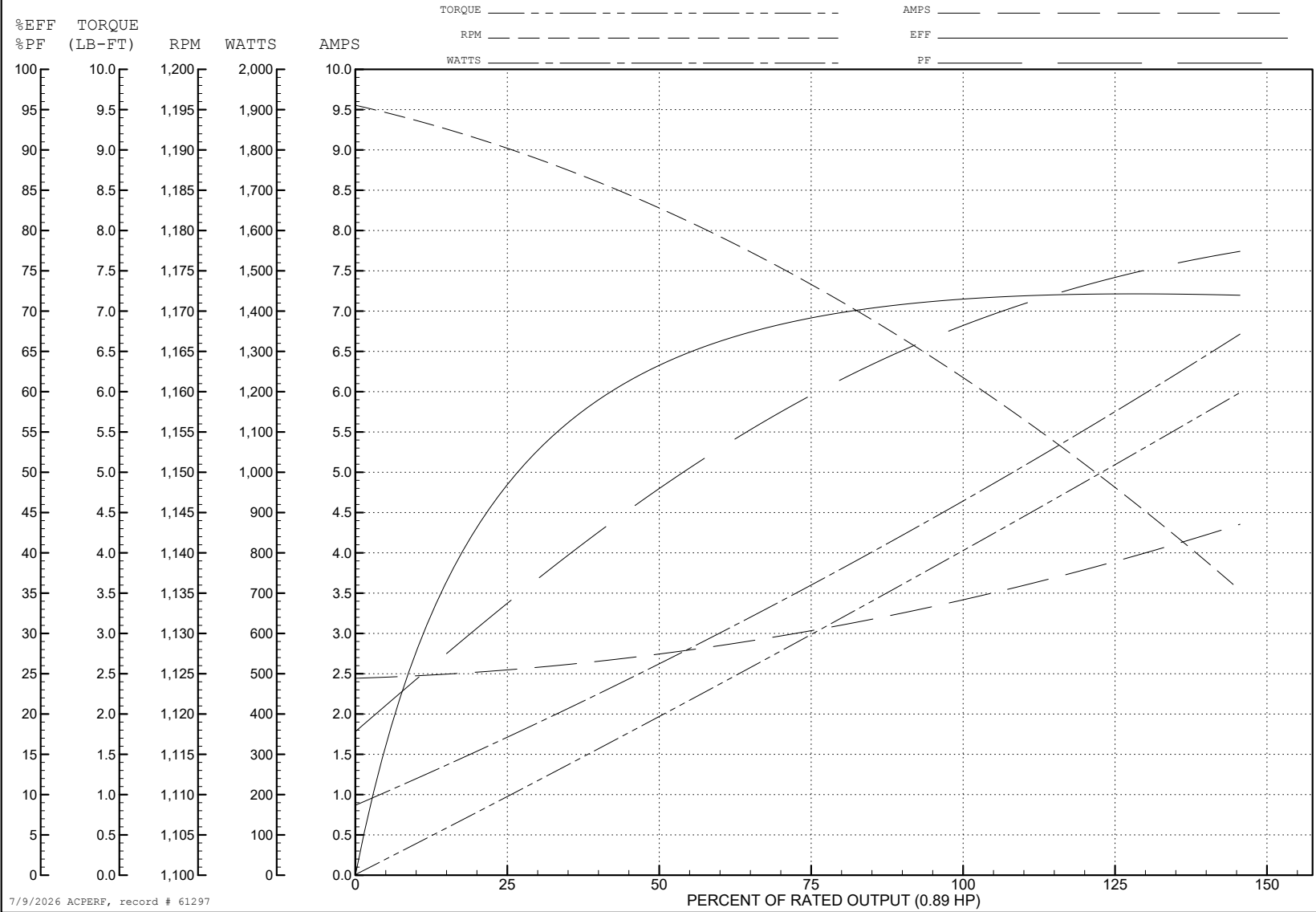
ABB Motors and Mechanical Inc.

WINDING # 36WGW065

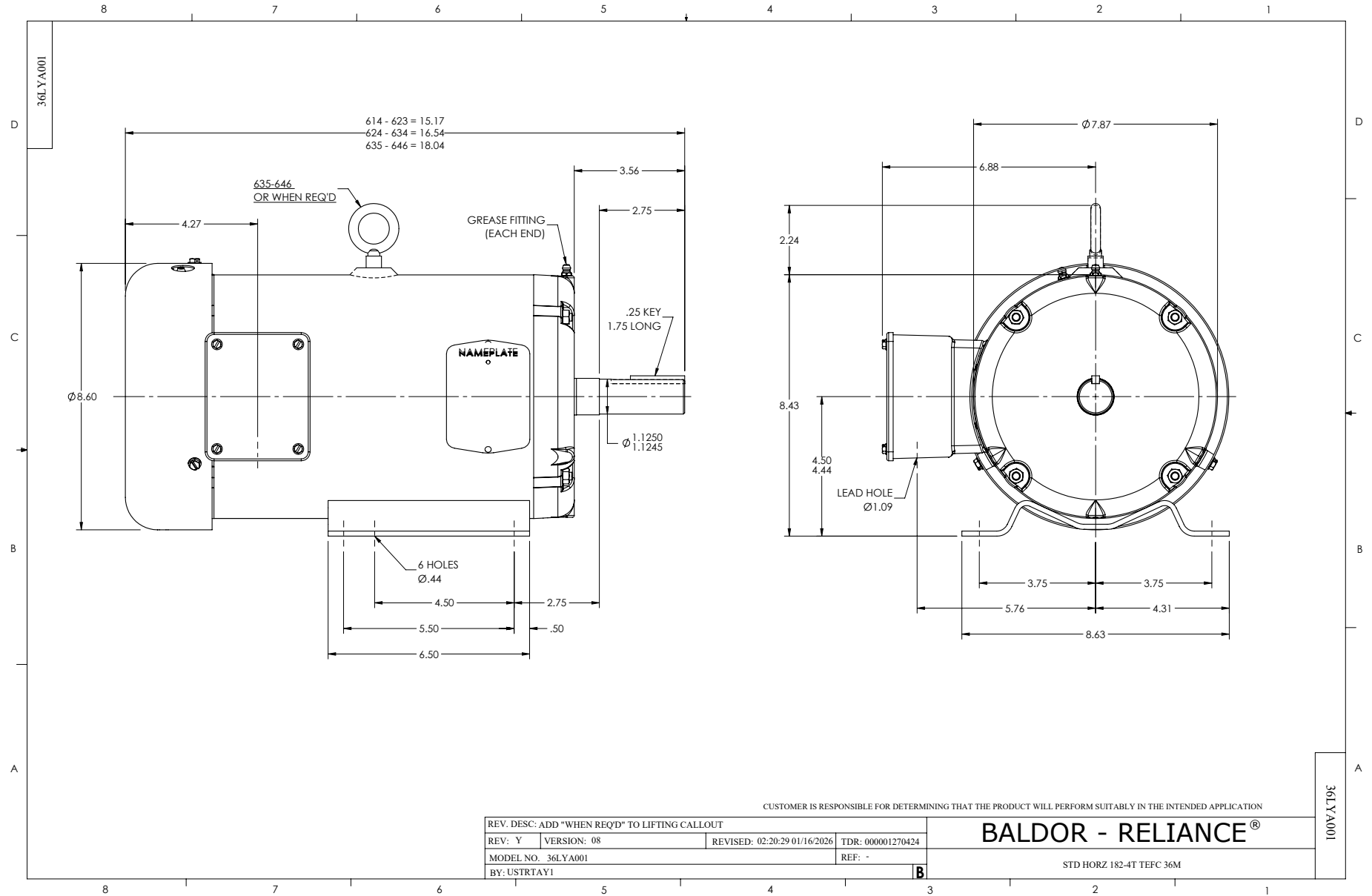
0.89 HP 3 PH 60 HZ 1163 RPM 230 V 3628M

Typical performance - not guaranteed values.

TORQUES (LB-FT): PO=13 PU=8.2 LR=8.7 LRA=17.8



7/9/2026 ACPERF, record # 61297



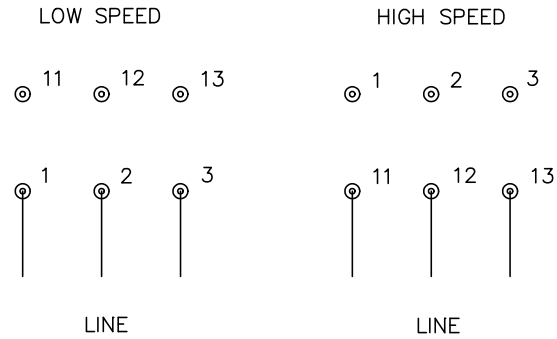
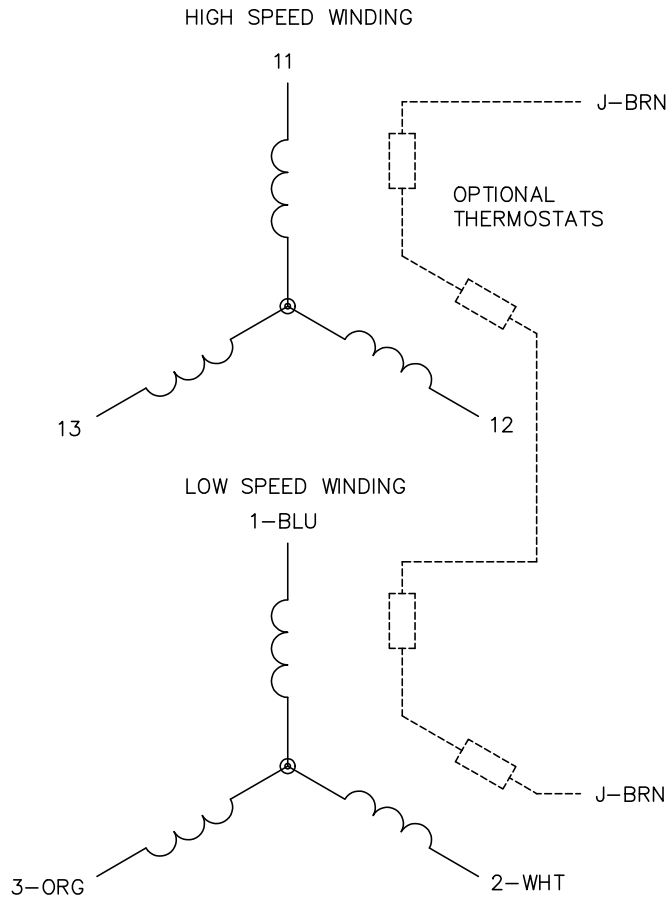
CUSTOMER IS RESPONSIBLE FOR DETERMINING THAT THE PRODUCT WILL PERFORM SUITABLY IN THE INTENDED APPLICATION

REV. DESC: ADD "WHEN REQ'D" TO LIFTING CALLOUT			
REV: Y	VERSION: 08	REVISED: 02:20:29 01/16/2026	TDR: 000001270424
MODEL NO. 36LYA001		REF: -	
BY: USTRYAY1			

BALDOR - RELIANCE®

STD HORZ 182-4T TEFC 36M

CD0013



NOTES:

1. INTERCHANGE ANY TWO LINE LEADS TO REVERSE ROTATION.
2. OPTIONAL THERMOSTATS ARE PROVIDED WHEN SPECIFIED.
3. ACTUAL NUMBER OF INTERNAL PARALLEL CIRCUITS MAY VARY.
4. LEAD COLORS ARE OPTIONAL. LEADS MUST ALWAYS BE NUMBERED AS SHOWN.

CD0013

REV. DESC: REVISE TO SHOW OPTIONAL COLORS			
REV. LTR: D	BY: JLP	REVISED: 01/22/99 8:50	TDR: 0171435
Ω 10000		FILE: AAA00005143	MDL: -
		MTL: -	

BALDOR ELECTRIC Co.

3PH, SV, 6 LEADS, 2-SPEED 2-WINDING