

ABB BALDOR RELIANCE III

Customer information packet

M1508T

44M 4/8P TEFC HOR 215T

Class - None

Division - Not Applicable

Specifications

Enclosure	TEFC
Frame	215T
Frame Material	Steel
Frequency	60.00 Hz
Haz Area Class and Group	None
Haz Area Division	Not Applicable
Motor Letter Type	Three Phase
Output @ Frequency	5.000 HP @ 60 HZ 2.500 HP @ 60 HZ
Phase	3
Synchronous Speed @ Frequency	1800 RPM @ 60 HZ
Voltage @ Frequency	208.0 V @ 60 HZ 230.0 V @ 60 HZ
Agency Approvals	UR CSA
Ambient Temperature	40 °C
Auxiliary Box	NO AUXILLARY BOX
Auxiliary Box Lead Termination	None
Base Indicator	Rigid
Bearing Grease Type	Polyrex EM (-20F +300F)
Blower	None
Current @ Voltage	10.400 A @ 230.0 V 13.000 A @ 208.0 V
Design Code	B
Drip Cover	No Drip Cover
Duty Rating	CONT
Electrically Isolated Bearing	Not Electrically Isolated
Feedback Device	NO FEEDBACK
Front Face Code	Standard
Front Shaft Indicator	None
Heater Indicator	No Heater
High Voltage Full Load Amps	10.4 a

Part Detail

Revision	R
Type	AC
Mech. spec.	37A001
Base	
Status	PRD/A
Elec. spec.	37WGS145
Layout	37LYA001
Eff. date	11-05-2025
CD Diagram	CD0011
Poles	04/08
Leads	6#14
Proprietary	False
Created date	08-03-2006

Insulation Class	F
Inverter Code	Not Inverter
KVA Code	K
Lifting Lugs	Standard Lifting Lugs
Locked Bearing Indicator	No Locked Bearing
Motor Lead Exit	Ko Box
Motor Lead Quantity/Wire Size	6 @ 14 AWG
Motor Lead Termination	Flying Leads
Motor Standards	NEMA
Motor Type	3744M
Mounting Arrangement	F1
Number of Poles	4 8
Overall Length	19.01 IN
Product Family	General Purpose
Pulley End Bearing Type	Ball
Pulley Face Code	Standard
Pulley Shaft Indicator	Standard
Rodent Screen	None
Service Factor	1.15
Shaft Diameter	1.375 IN
Shaft Extension Location	Pulley End
Shaft Ground Indicator	No Shaft Grounding
Shaft Rotation	Reversible
Shaft Slinger Indicator	No Slinger
Speed	1725 rpm 850 rpm
Speed Code	2S-1W-CT
Starting Method	Direct on line
Thermal Device - Bearing	None
Thermal Device - Winding	None
Vibration Sensor Indicator	No Vibration Sensor
Winding Thermal 1	None
Winding Thermal 2	None

Nameplate

NP1256L										
CAT.NO.	M1508T									
SPEC.	37A001S145									
HP	5/2.5									
VOLTS	208-230									
AMP	13/10.4									
RPM	1725/850									
FRAME	215T	HZ	60		PH	3				
SER.F.	1.15	CODE	K	DES	B	CLASS	F			
NEMA-NOM-EFF		PF								
RATING	40C AMB-CONT									
CC										
DE	6307	ODE	6206							
ENCL	TEFC	SN								

Accessories

Part number	Description	Multiplier
37-3301	C FACE KIT	P1

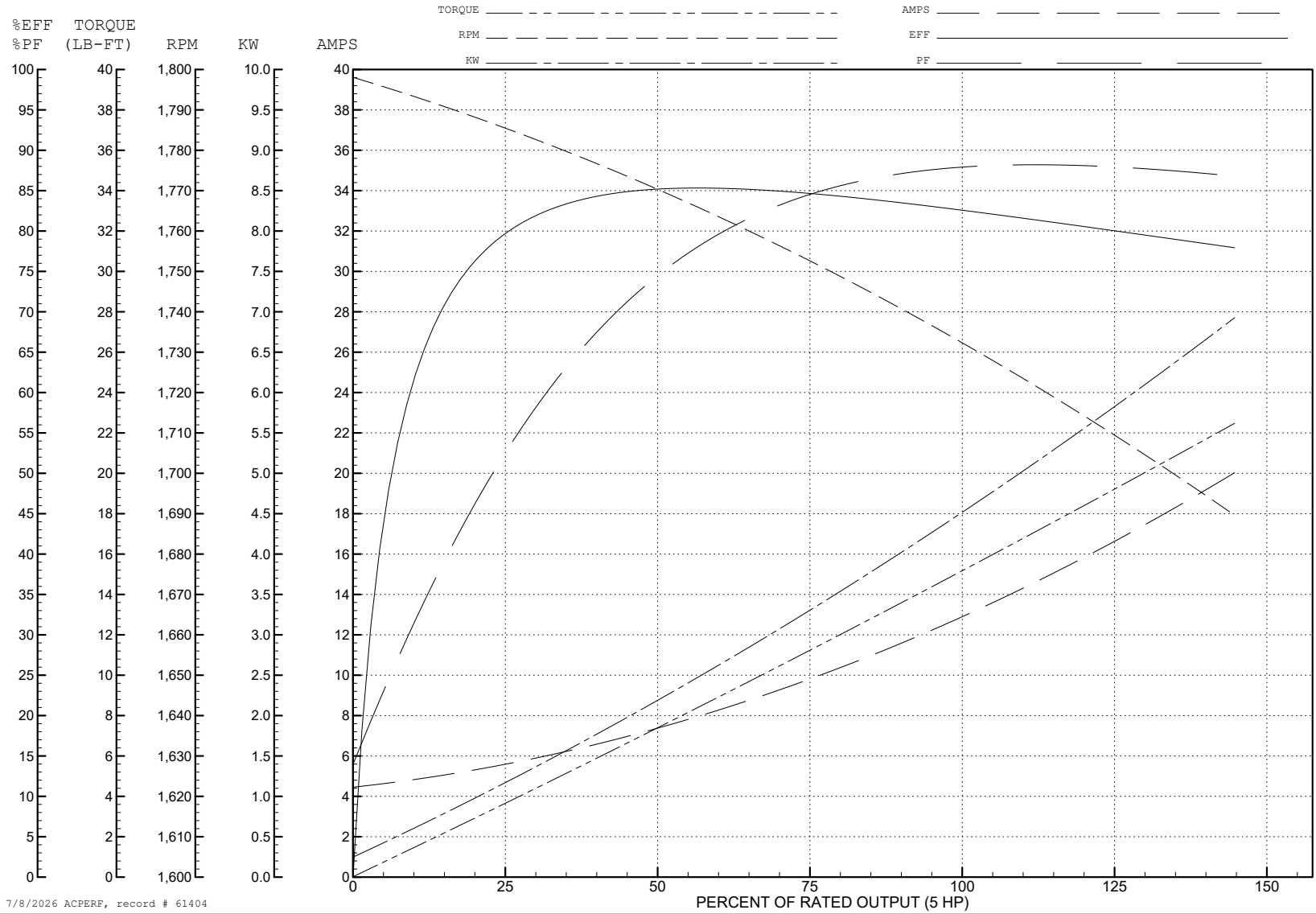
ABB Motors and Mechanical Inc.

WINDING # 37WGS145

5 HP 3 PH 60 HZ 1734 RPM 230 V 3744M

Typical performance - not guaranteed values.

TORQUES (LB-FT): PO=43.4 PU=25 LR=36.6 LRA=104



7/8/2026 ACPERF, record # 61404

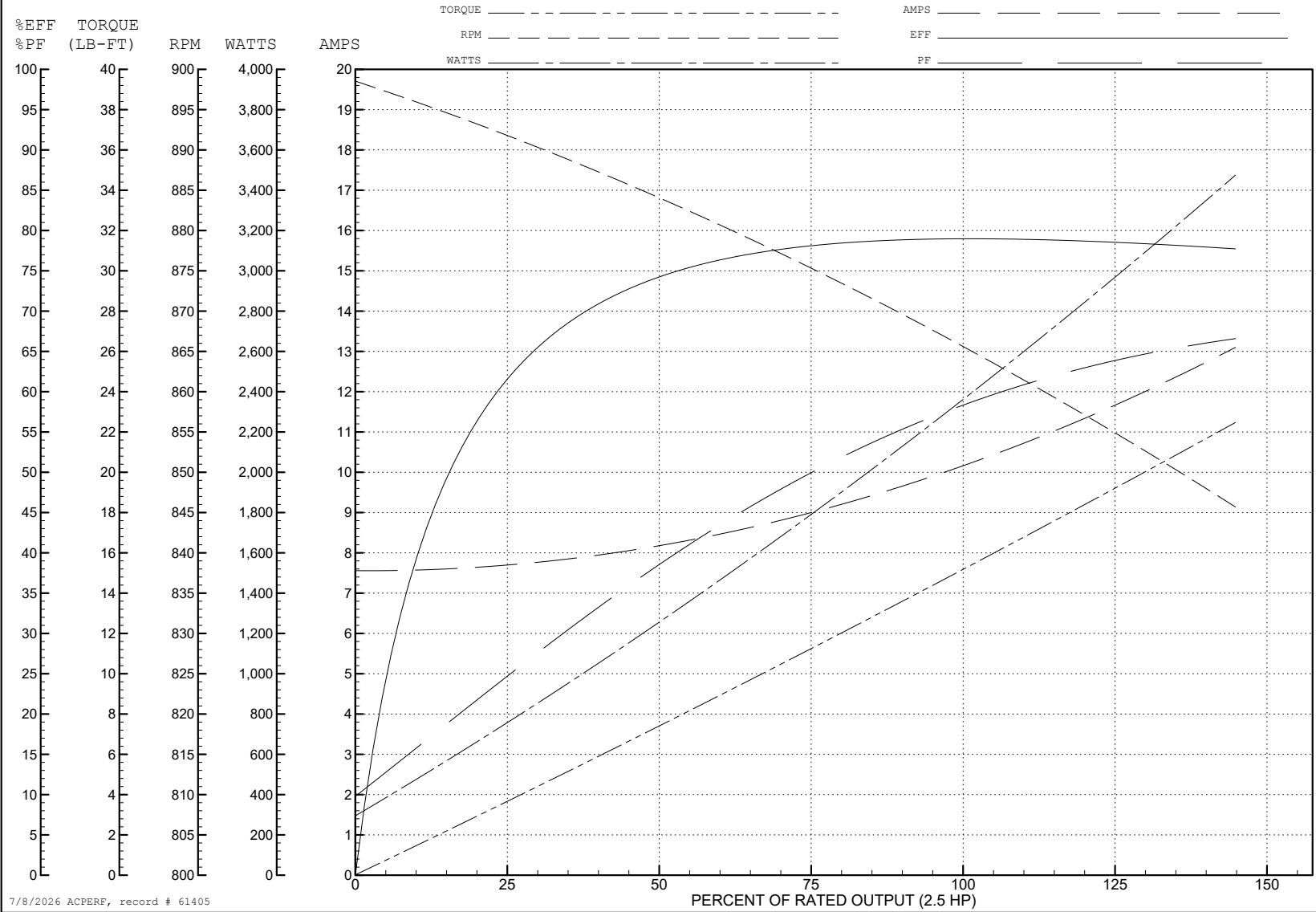
ABB Motors and Mechanical Inc.

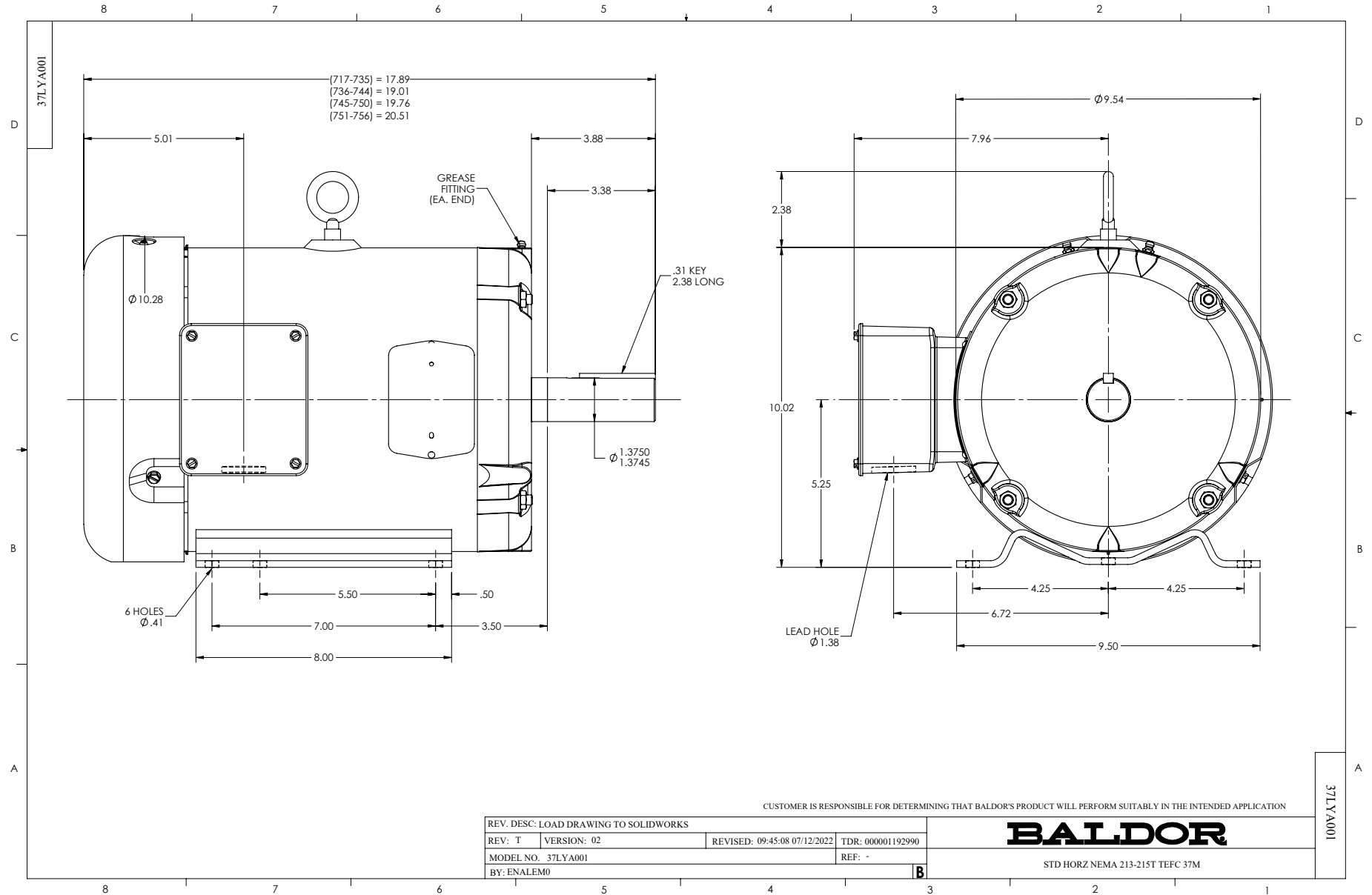
WINDING # 37WGS145

2.5 HP 3 PH 60 HZ 866 RPM 230 V 3744M

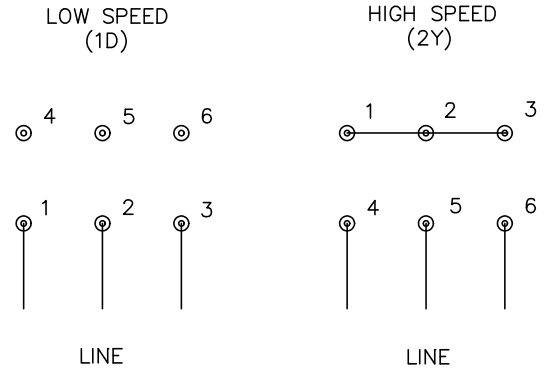
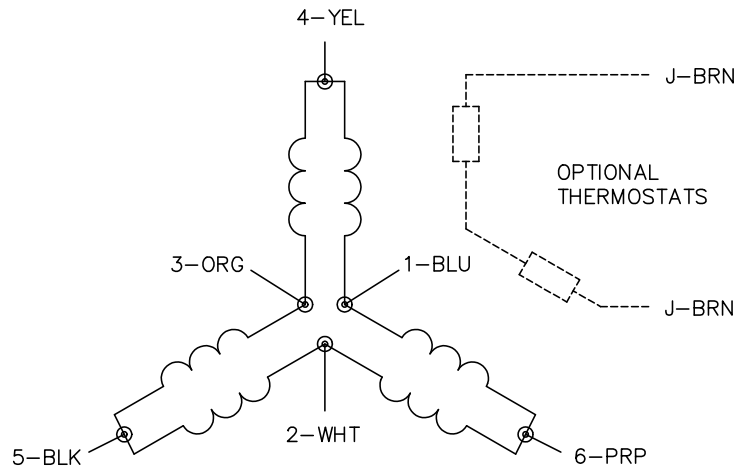
Typical performance - not guaranteed values.

TORQUES (LB-FT): PO=48.1 PU=30.6 LR=37.3 LRA=55.5





CD0011



NOTES:

1. INTERCHANGE ANY TWO LINE LEADS TO REVERSE ROTATION.
2. OPTIONAL THERMOSTATS ARE PROVIDED WHEN SPECIFIED.
3. ACTUAL NUMBER OF INTERNAL PARALLEL CIRCUITS MAY BE A MULTIPLE OF THOSE SHOWN ABOVE.
4. LEAD COLORS ARE OPTIONAL. LEADS MUST ALWAYS BE NUMBERED AS SHOWN.

CD0011

REV. DESC: REVISE TO SHOW OPTIONAL COLORS			
REV. LTR: F	BY: JLP	REVISED: 01/21/99 5:04	TDR: 0171435
110003		FILE: DWG\142.wg	MDL: -
		MTL: -	

BALDOR ELECTRIC Co.

3PH, SV, 6 LEADS, 2-SPEED 1-WINDING CONSTANT TORQUE