

BALDOR • RELIANCE

Customer information packet

M1507T

3/1.5HP, 1725/850RPM, 3PH, 60HZ, 184T, 3640M

Class - None

Division - Not Applicable

Copyright © All product information within this document is subject to ABB Motors and Mechanical Inc. copyright © protection, unless otherwise noted.

10/6/2024 11:57:44 PM

Specifications

Enclosure	TEFC
Frame	184T
Frame Material	Steel
Frequency	60.00 Hz
Haz Area Class and Group	None
Haz Area Division	Not Applicable
Motor Letter Type	Three Phase
Output @ Frequency	3.000 HP @ 60 HZ 1.500 HP @ 60 HZ
Phase	3
Synchronous Speed @ Frequency	1800 RPM @ 60 HZ
Voltage @ Frequency	230.0 V @ 60 HZ
Agency Approvals	UR CSA
Ambient Temperature	40 °C
Auxillary Box	No Auxillary Box
Auxillary Box Lead Termination	None
Base Indicator	Rigid
Bearing Grease Type	Polyrex EM (-20F +300F)
Blower	None
Current @ Voltage	8.300 A @ 230.0 V
Design Code	B
Drip Cover	No Drip Cover
Duty Rating	CONT
Electrically Isolated Bearing	Not Electrically Isolated
Feedback Device	NO FEEDBACK
Front Face Code	Standard
Front Shaft Indicator	None
Heater Indicator	No Heater
High Voltage Full Load Amps	8.3 a
Insulation Class	F
Inverter Code	Not Inverter

Part detail

Revision	AA
Type	AC
Mech. spec.	36A001
Base	
Status	PRD/A
Elec. spec.	36WGX408
Layout	36LYA001
Eff. date	10-02-2024
CD Diagram	CD0011
Poles	04/08
Leads	6#16
Proprietary	False
Created date	01-01-0001

KVA Code	K
Lifting Lugs	Standard Lifting Lugs
Locked Bearing Indicator	No Locked Bearing
Motor Lead Exit	Ko Box
Motor Lead Quantity/Wire Size	6 @ 16 AWG
Motor Lead Termination	Flying Leads
Motor Standards	NEMA
Motor Type	3640M
Mounting Arrangement	F1
Number of Poles	4 8
Overall Length	18.04 IN
Product Family	General Purpose
Pulley End Bearing Type	Ball
Pulley Face Code	Standard
Pulley Shaft Indicator	Standard
Rodent Screen	None
Service Factor	1.15
Shaft Diameter	1.125 IN
Shaft Extension Location	Pulley End
Shaft Ground Indicator	No Shaft Grounding
Shaft Rotation	Reversible
Shaft Slinger Indicator	No Slinger
Speed	1725 rpm 850 rpm
Speed Code	2S-1W-CT
Starting Method	Direct on line
Thermal Device - Bearing	None
Thermal Device - Winding	None
Vibration Sensor Indicator	No Vibration Sensor
Winding Thermal 1	None
Winding Thermal 2	None

Nameplate

NP1256L									
CAT.NO.	M1507T								
SPEC.	36A01X408								
HP	3/1.5								
VOLTS	230								
AMP	8.3/8.5								
RPM	1725/850								
FRAME	184T		HZ	60		PH	3		
SER.F.	1.15	CODE	K	DES	B	CLASS	F		
NEMA-NOM-EFF		PF							
RATING	40C AMB-CONT								
CC									
DE	6206		ODE	6205					
ENCL	TEFC	SN							

Accessories

Part number	Description	Multiplier
36-3301	C FACE KIT	A8
36EP1304A62SP	FLANGE MTD ENDPLATE 182-4TD -ENCL (LESS	A8

AC Induction Motor Performance Data

Record # 10984

Typical performance - not guaranteed values

Winding: 36WGX408-R001		Type: 3640M	Enclosure: TEFC
Nameplate Data		230 V, 60 Hz: High Speed Connection	
Rated Output (HP)	3/1.5	Full Load Torque	9.1 LB-FT
Volts	230	Start Configuration	direct on line
Full Load Amps	8.3/8.5	Breakdown Torque	32 LB-FT
R.P.M.	1725/850	Pull-up Torque	20 LB-FT
Hz	60 Phase	Locked-rotor Torque	31.5 LB-FT
NEMA Design Code	B KVA Code	Starting Current	65.4 A
Service Factor (S.F.)	1.15	No-load Current	3.6 A
NEMA Nom. Eff.	0 Power Factor	Line-line Res. @ 25°C	1.56 Ω
Rating - Duty	40C AMB-CONT	Temp. Rise @ Rated Load	70°C
S.F. Amps		Temp. Rise @ S.F. Load	83°C

Load Characteristics 230 V, 60 Hz, 3 HP

% of Rated Load	25	50	75	100	125	150	S.F.
Power Factor	49	68	78	84	87	89	86
Efficiency	74.1	81.5	82.9	82.3	80.9	78.5	81.5
Speed	1787	1772	1759	1742	1725	1702	1732
Line amperes	4.2	5.3	6.5	8.3	9.9	11.9	9.3

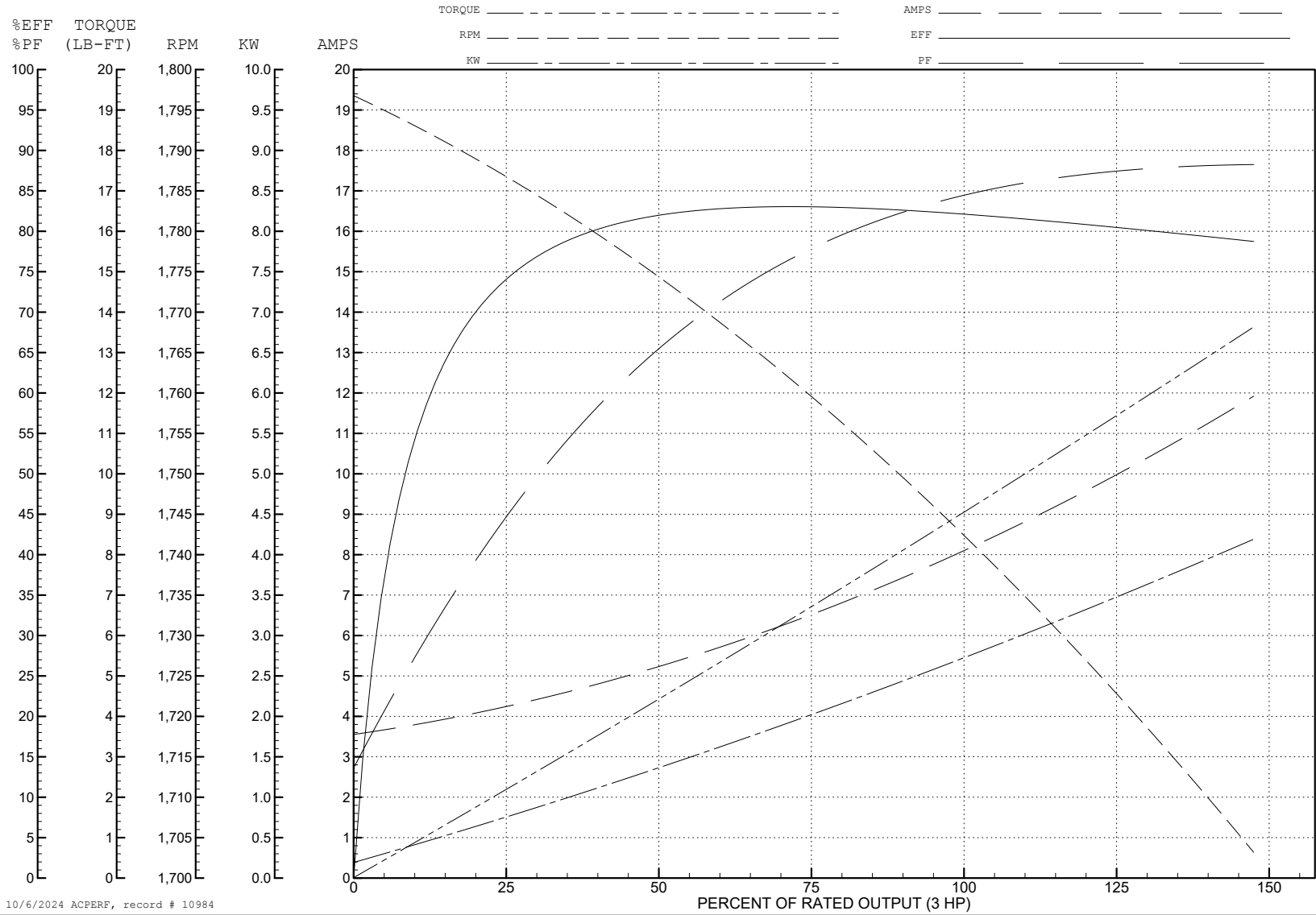
ABB Motors and Mechanical Inc.

WINDING # 36WGx408

3 HP 3 PH 60 HZ 1742 RPM 230 V 3640M

Typical performance - not guaranteed values.

TORQUES (LB-FT): PO=32 PU=20 LR=31.5 LRA=65.4



10/6/2024 ACPERF, record # 10984

AC Induction Motor Performance Data

Record # 10985

Typical performance - not guaranteed values

Winding: 36WGX408-R001		Type: 3640M	Enclosure: TEFC
Nameplate Data		230 V, 60 Hz: Low Speed Connection	
Rated Output (HP)	3/1.5	Full Load Torque	9.1 LB-FT
Volts	230	Start Configuration	direct on line
Full Load Amps	8.3/8.5	Breakdown Torque	36 LB-FT
R.P.M.	1725/850	Pull-up Torque	29 LB-FT
Hz	60 Phase	Locked-rotor Torque	31.1 LB-FT
NEMA Design Code	B KVA Code	Starting Current	38.2 A
Service Factor (S.F.)	1.15	No-load Current	7.1 A
NEMA Nom. Eff.	0 Power Factor	Line-line Res. @ 25°C	2.12 Ω
Rating - Duty	40C AMB-CONT	Temp. Rise @ Rated Load	89°C
S.F. Amps		Temp. Rise @ S.F. Load	98°C

Load Characteristics 230 V, 60 Hz, 1.5 HP

% of Rated Load	25	50	75	100	125	150	S.F.
Power Factor	22	33	42	51	57	63	55
Efficiency	48.5	64.2	70.2	72.8	73.6	73.3	73.3
Speed	892	883	876	866	856	845	860
Line amperes	7.3	7.5	8.2	8.5	9.2	10	8.9

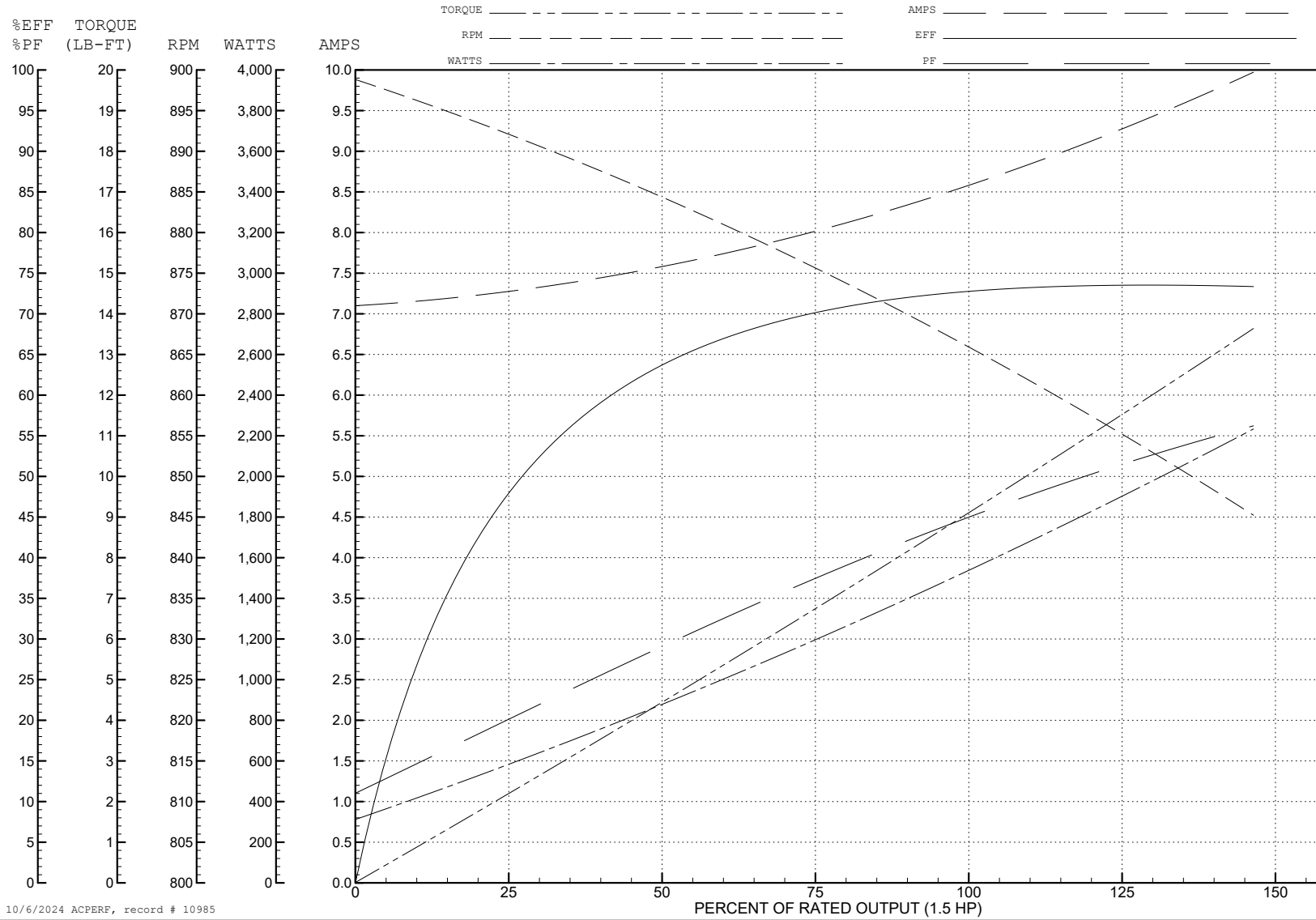
ABB Motors and Mechanical Inc.

WINDING # 36WX408

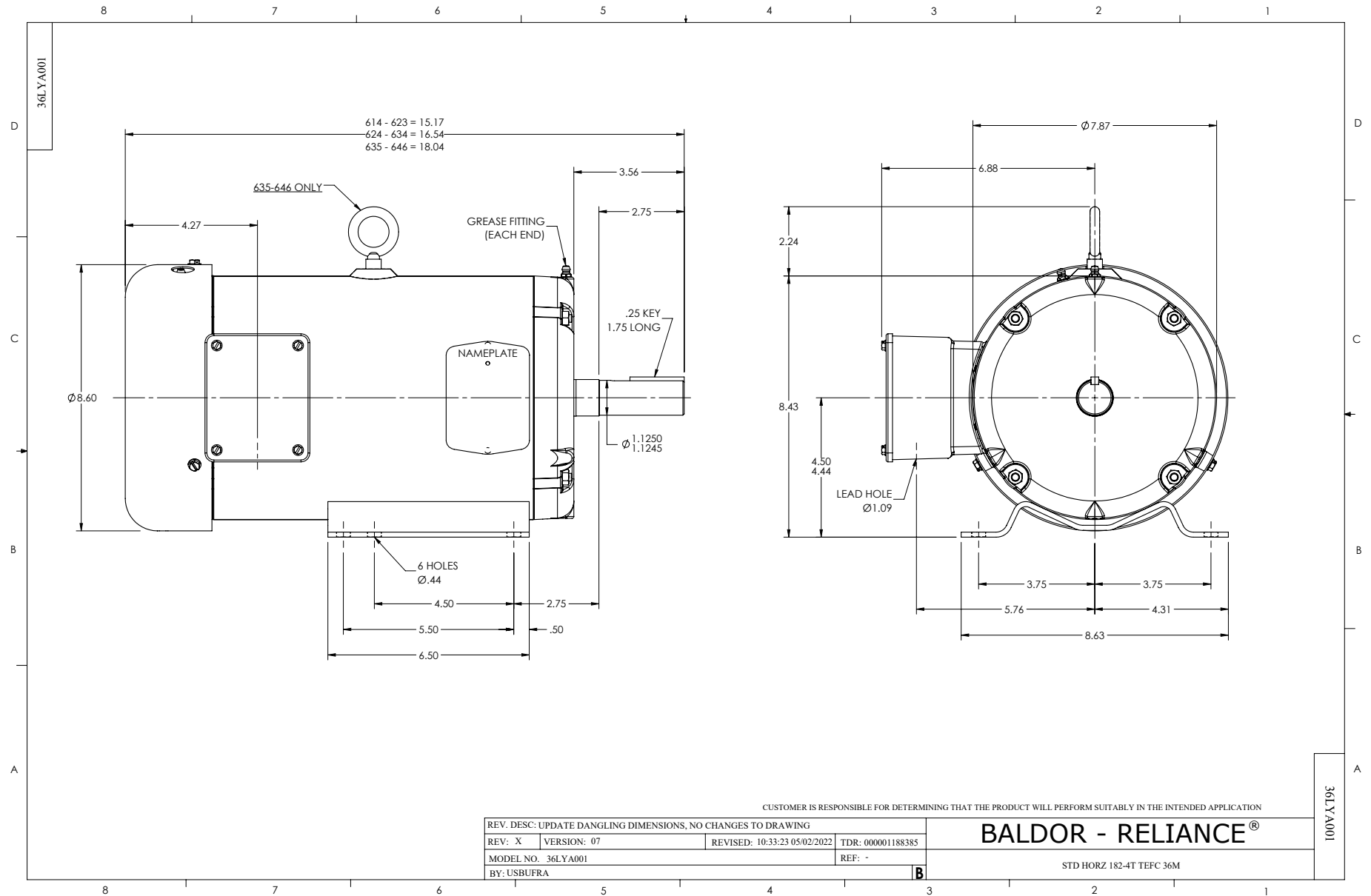
1.5 HP 3 PH 60 HZ 866 RPM 230 V 3640M

Typical performance - not guaranteed values.

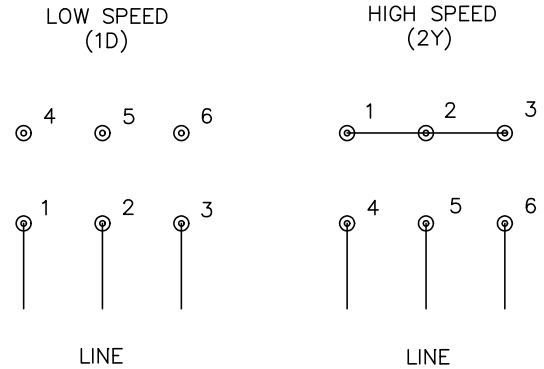
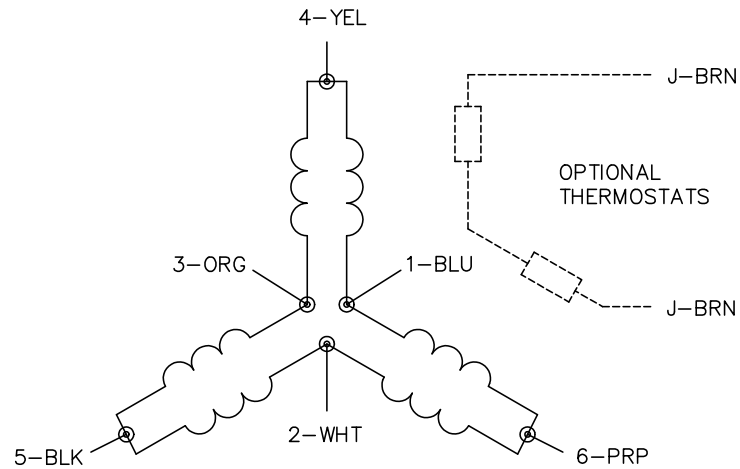
TORQUES (LB-FT): PO=36 PU=29 LR=31.1 LRA=38.2



10/6/2024 ACPERF, record # 10985



CD0011



NOTES:

1. INTERCHANGE ANY TWO LINE LEADS TO REVERSE ROTATION.
2. OPTIONAL THERMOSTATS ARE PROVIDED WHEN SPECIFIED.
3. ACTUAL NUMBER OF INTERNAL PARALLEL CIRCUITS MAY BE A MULTIPLE OF THOSE SHOWN ABOVE.
4. LEAD COLORS ARE OPTIONAL. LEADS MUST ALWAYS BE NUMBERED AS SHOWN.

CD0011

REV. DESC: REVISE TO SHOW OPTIONAL COLORS			
REV. LTR: F	BY: JLP	REVISED: 01/21/99 5:04	TDR: 0171435
110000		FILE: DWG\142.wg	MDL: -
		MTL: -	

BALDOR ELECTRIC Co.

3PH, SV, 6 LEADS, 2-SPEED 1-WINDING CONSTANT TORQUE