

ABB BALDOR RELIANCE III

Customer information packet

M1506T

2/1HP, 1725/850RPM, 3PH, 60HZ, 184T, 3628M

Class - None

Division - Not Applicable

Specifications

Enclosure	TEFC
Frame	184T
Frame Material	Steel
Frequency	60.00 Hz
Haz Area Class and Group	None
Haz Area Division	Not Applicable
Motor Letter Type	Three Phase
Output @ Frequency	2.000 HP @ 60 HZ 1.000 HP @ 60 HZ
Phase	3
Synchronous Speed @ Frequency	900 RPM @ 60 HZ
Voltage @ Frequency	208.0 V @ 60 HZ 230.0 V @ 60 HZ
Agency Approvals	CSA UR
Ambient Temperature	40 °C
Auxiliary Box	NO AUXILLARY BOX
Auxiliary Box Lead Termination	None
Base Indicator	Rigid
Bearing Grease Type	Polyrex EM (-20F +300F)
Blower	None
Current @ Voltage	5.200 A @ 230.0 V 5.500 A @ 208.0 V
Drip Cover	No Drip Cover
Duty Rating	CONT
Electrically Isolated Bearing	Not Electrically Isolated
Feedback Device	NO FEEDBACK
Front Face Code	Standard
Front Shaft Indicator	None
Heater Indicator	No Heater
High Voltage Full Load Amps	5.2 a
Insulation Class	F

Part Detail

Revision	AC
Type	AC
Mech. spec.	36A001
Base	
Status	PRD/A
Elec. spec.	36WG0629
Layout	36LYA001
Eff. date	05-20-2025
CD Diagram	CD0011
Poles	04/08
Leads	6#16
Proprietary	False
Created date	01-01-0001

Inverter Code	Not Inverter
KVA Code	D
Lifting Lugs	No Lifting Lugs
Locked Bearing Indicator	No Locked Bearing
Motor Lead Exit	Ko Box
Motor Lead Quantity/Wire Size	6 @ 16 AWG
Motor Lead Termination	Flying Leads
Motor Standards	NEMA
Motor Type	3628M
Mounting Arrangement	F1
Number of Poles	4 8
Overall Length	16.54 IN
Product Family	General Purpose
Pulley End Bearing Type	Ball
Pulley Face Code	Standard
Pulley Shaft Indicator	Standard
Rodent Screen	None
Service Factor	1.15
Shaft Diameter	1.125 IN
Shaft Extension Location	Pulley End
Shaft Ground Indicator	No Shaft Grounding
Shaft Rotation	Reversible
Shaft Slinger Indicator	No Slinger
Speed	1725 rpm 850 rpm
Speed Code	2S-1W-CT
Starting Method	Direct on line
Thermal Device - Bearing	None
Thermal Device - Winding	None
Vibration Sensor Indicator	No Vibration Sensor
Winding Thermal 1	None
Winding Thermal 2	None

Nameplate

NP1256L									
CAT.NO.	M1506T								
SPEC.	36A01-629								
HP	2/1								
VOLTS	208-230								
AMP	5.5/5.2								
RPM	1725/850								
FRAME	184T		HZ	60		PH	3		
SER.F.	1.15	CODE	D	DES	-	CLASS	F		
NEMA-NOM-EFF		PF							
RATING	40C AMB-CONT								
CC									
DE	6206		ODE	6205					
ENCL	TEFC	SN							

Accessories

Part number	Description	Multiplier
36-3301	C FACE KIT	A8
36EP1304A62SP	FLANGE MTD ENDPLATE 182-4TD -ENCL (LESS	A8

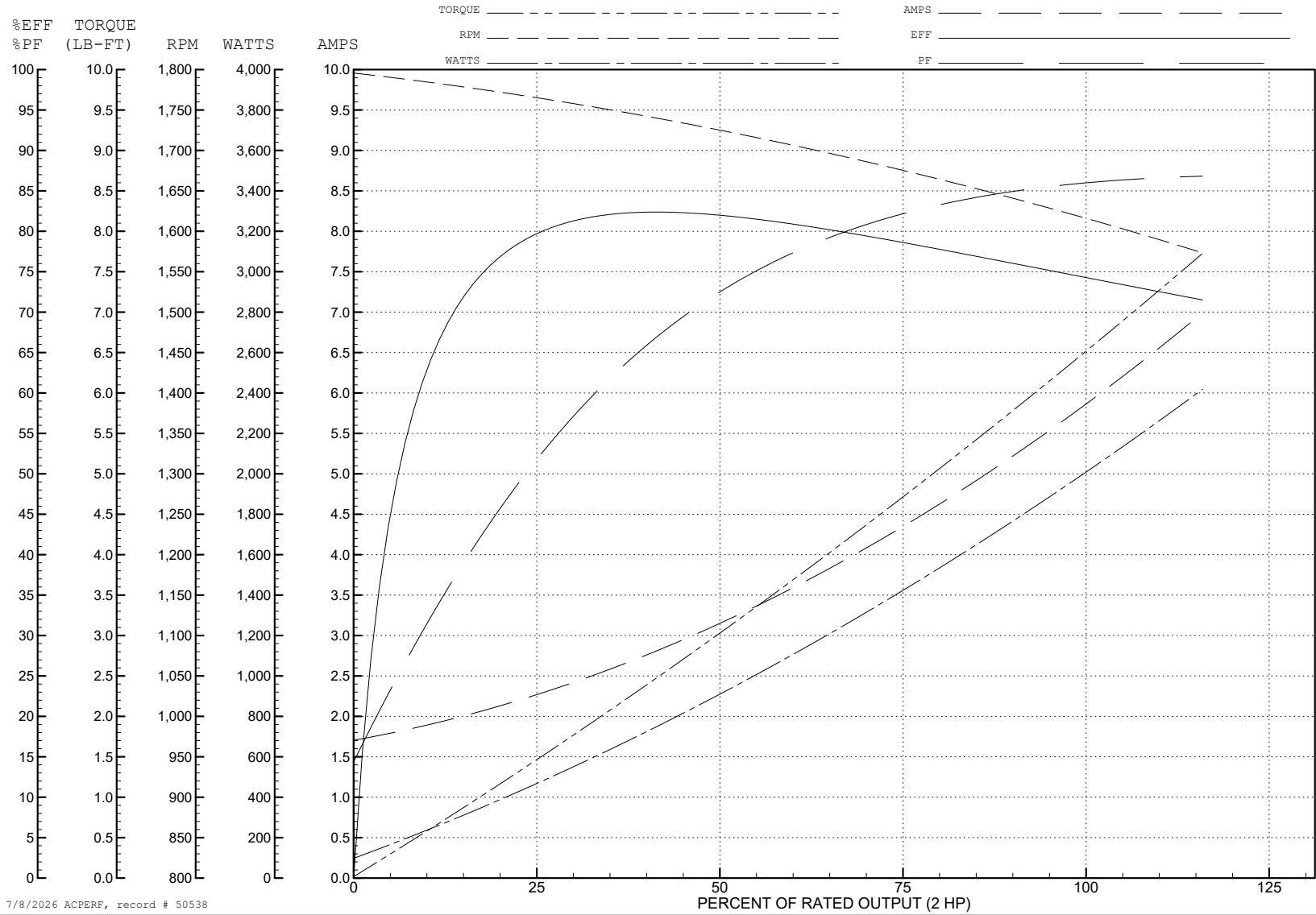
ABB Motors and Mechanical Inc.

WINDING # 36WG0629

Typical performance - not guaranteed values.

2 HP 3 PH 60 HZ 1628 RPM 230 V 3628M

TORQUES (LB-FT): PO=18 PU=14 LR=14 LRA=25



7/8/2026 ACPERF, record # 50538

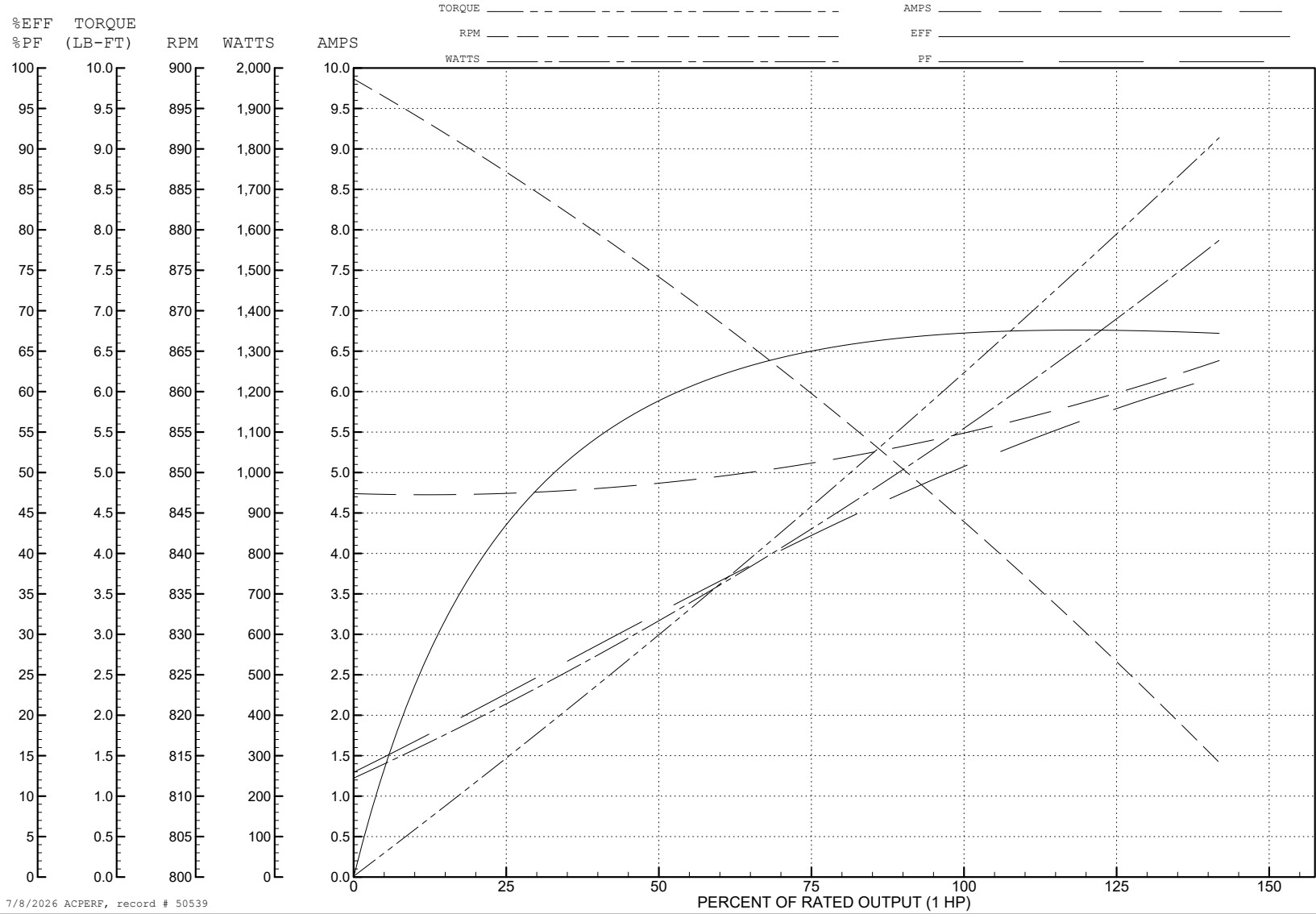
ABB Motors and Mechanical Inc.

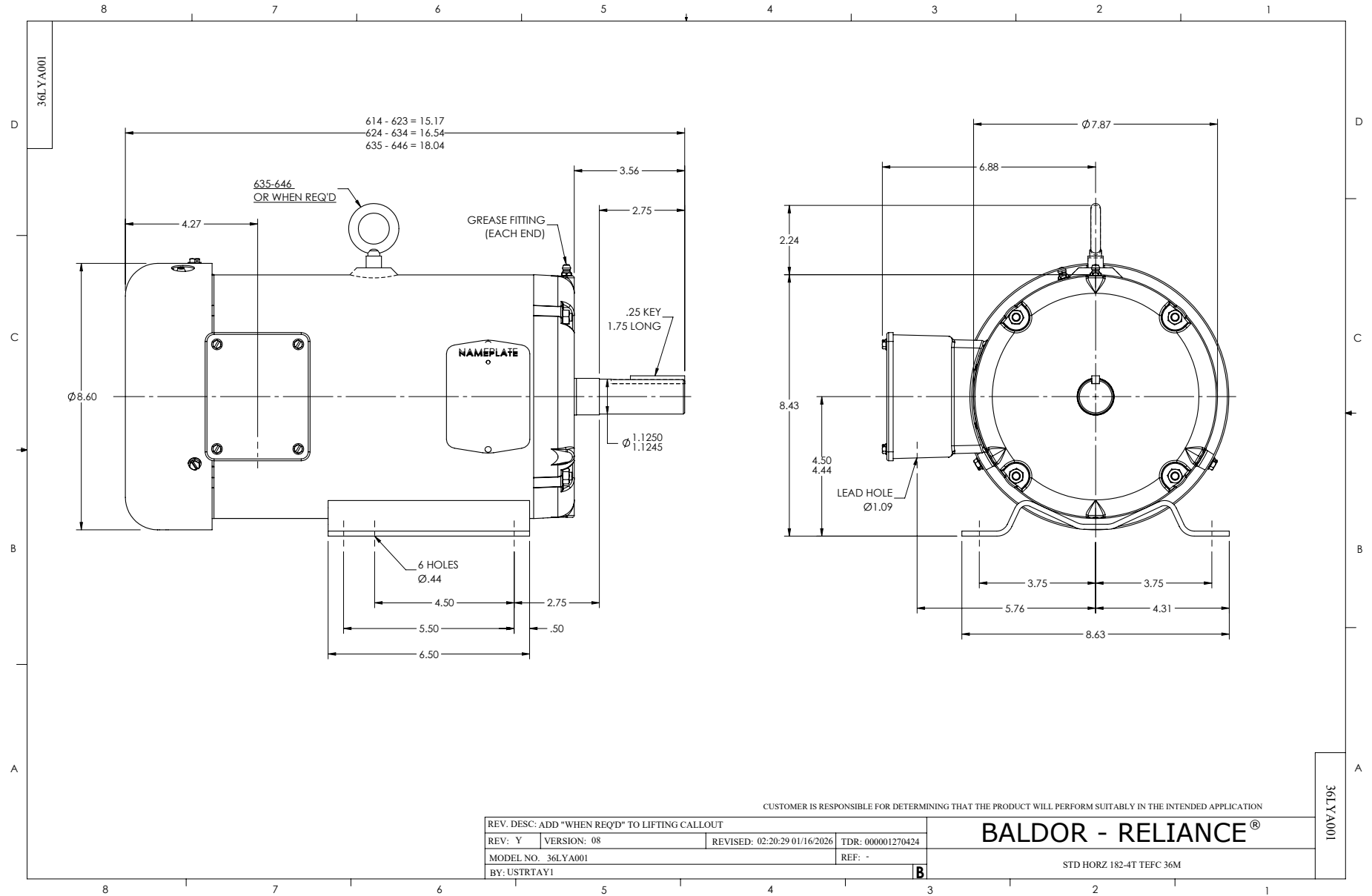
WINDING # 36WG0629

Typical performance - not guaranteed values.

1 HP 3 PH 60 HZ 845 RPM 230 V 3628M

TORQUES (LB-FT): PO=21 PU=17 LR=18 LRA=21





CUSTOMER IS RESPONSIBLE FOR DETERMINING THAT THE PRODUCT WILL PERFORM SUITABLY IN THE INTENDED APPLICATION

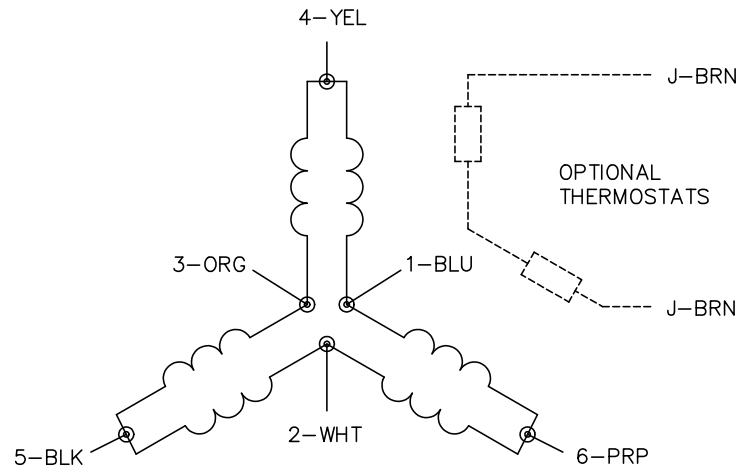
REV. DESC: ADD "WHEN REQ'D" TO LIFTING CALLOUT			
REV: Y	VERSION: 08	REVISED: 02:20:29 01/16/2026	TDR: 000001270424
MODEL NO. 36LYA001		REF: -	
BY: USTRTAY1			

BALDOR - RELIANCE®

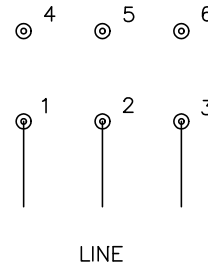
STD HORZ 182-4T TEFC 36M

36LYA001

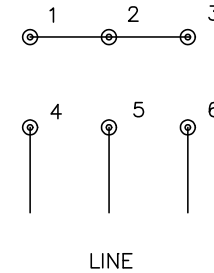
CD0011



LOW SPEED
(1D)



HIGH SPEED
(2Y)



NOTES:

1. INTERCHANGE ANY TWO LINE LEADS TO REVERSE ROTATION.
2. OPTIONAL THERMOSTATS ARE PROVIDED WHEN SPECIFIED.
3. ACTUAL NUMBER OF INTERNAL PARALLEL CIRCUITS MAY BE A MULTIPLE OF THOSE SHOWN ABOVE.
4. LEAD COLORS ARE OPTIONAL. LEADS MUST ALWAYS BE NUMBERED AS SHOWN.

CD0011

REV. DESC: REVISE TO SHOW OPTIONAL COLORS			
REV. LTR: F	BY: JLP	REVISED: 01/21/99 5:04	TDR: 0171435
110000		FILE: DWG\142.wg	MDL: -
		MTL: -	

BALDOR ELECTRIC Co.

3PH, SV, 6 LEADS, 2-SPEED 1-WINDING CONSTANT TORQUE