



Customer information packet

M1504T

1-.5HP, 1715-870RPM, 3PH, 60HZ, 143T, 3524M, T

Class - None

Division - Not Applicable

Specifications

Enclosure	TEFC
Frame	143T
Frame Material	Steel
Frequency	60.00 Hz
Haz Area Class and Group	None
Haz Area Division	Not Applicable
Motor Letter Type	Three Phase
Output @ Frequency	.500 HP @ 60 HZ 1.000 HP @ 60 HZ
Phase	3
Synchronous Speed @ Frequency	900 RPM @ 60 HZ
Voltage @ Frequency	230.0 V @ 60 HZ 208.0 V @ 60 HZ
Agency Approvals	CSA UR
Ambient Temperature	40 °C
Auxillary Box	No Auxillary Box
Auxillary Box Lead Termination	None
Base Indicator	Rigid
Bearing Grease Type	Polyrex EM (-20F +300F)
Blower	None
Current @ Voltage	3.540 A @ 230.0 V 2.740 A @ 208.0 V
Design Code	B
Drip Cover	No Drip Cover
Duty Rating	CONT
Electrically Isolated Bearing	Not Electrically Isolated
Feedback Device	NO FEEDBACK
Front Shaft Indicator	None
Heater Indicator	No Heater
High Voltage Full Load Amps	2.7 a
Insulation Class	F

Part detail

Revision	C
Type	AC
Mech. spec.	35AA001
Base	
Status	PRD/A
Elec. spec.	35WGG366
Layout	35LYAA001
Eff. date	07-02-2024
CD Diagram	CD0011
Poles	04/08
Leads	6#18
Proprietary	False
Created date	02-23-2023

Inverter Code	Not Inverter
KVA Code	H
Lifting Lugs	No Lifting Lugs
Locked Bearing Indicator	No Locked Bearing
Motor Lead Quantity/Wire Size	6 @ 18 AWG
Motor Lead Termination	Flying Leads
Motor Standards	NEMA
Motor Type	3524M
Mounting Arrangement	F1
Number of Poles	4 8
Overall Length	13.31 IN
Product Family	General Purpose
Pulley End Bearing Type	Ball
Pulley Face Code	Standard
Pulley Shaft Indicator	Standard
Rodent Screen	None
Service Factor	1.15
Shaft Diameter	0.875 IN
Shaft Ground Indicator	No Shaft Grounding
Shaft Rotation	Reversible
Shaft Slinger Indicator	No Slinger
Speed	1715 rpm 870 rpm
Speed Code	2S-1W-CT
Starting Method	Direct on line
Thermal Device - Bearing	None
Thermal Device - Winding	None
Vibration Sensor Indicator	No Vibration Sensor
Winding Thermal 1	None
Winding Thermal 2	None

Nameplate

NP1256L									
CAT.NO.	M1504T								
SPEC.	35AA001G366G1								
HP	1-.5								
VOLTS	208-230								
AMP	2.74-3.54								
RPM	1715-870								
FRAME	143T		HZ	60		PH	3		
SER.F.	1.15	CODE	H	DES	B	CLASS	F		
NEMA-NOM-EFF		PF							
RATING	40C AMB-CONT								
CC									
DE	6205		ODE	6203					
ENCL	TEFC	SN							
	SFA 3.43-3.09								

Accessories

Part number	Description	Multiplier
35-8762	C FACE KIT	A8
35EP1506A01SP	D-FLANGE KIT	A8

AC Induction Motor Performance Data

Record # 87900

Typical performance - not guaranteed values

Winding: 35WGG366-R001		Type: 3524M	Enclosure: TEFC
Nameplate Data		230 V, 60 Hz: Low Speed Connection	
Rated Output (HP)	1/.5	Full Load Torque	3.01 LB-FT
Volts	208-230	Start Configuration	direct on line
Full Load Amps	2.74/3.54	Breakdown Torque	12.8 LB-FT
R.P.M.	1715/870	Pull-up Torque	8.21 LB-FT
Hz	60 Phase	Locked-rotor Torque	9.46 LB-FT
NEMA Design Code	B KVA Code	Starting Current	12.8 A
Service Factor (S.F.)	1.15	No-load Current	3.51 A
NEMA Nom. Eff.	0 Power Factor	Line-line Res. @ 25°C	10.2 Ω
Rating - Duty	40C AMB-CONT	Temp. Rise @ Rated Load	
		Locked-rotor Power Factor	80.4
		Rotor inertia	0.173 lb-ft ²

Load Characteristics 230 V, 60 Hz, 0.5 HP

% of Rated Load	25	50	75	100	125	150	S.F.
Power Factor	23	30	37	44	50	56	48
Efficiency	29	44.5	53.7	59.4	62.9	64.9	61.5
Speed	893.2	887.2	880.9	874.1	866.9	858.9	870
Line amperes	3.5	3.51	3.55	3.61	3.72	3.86	3.68

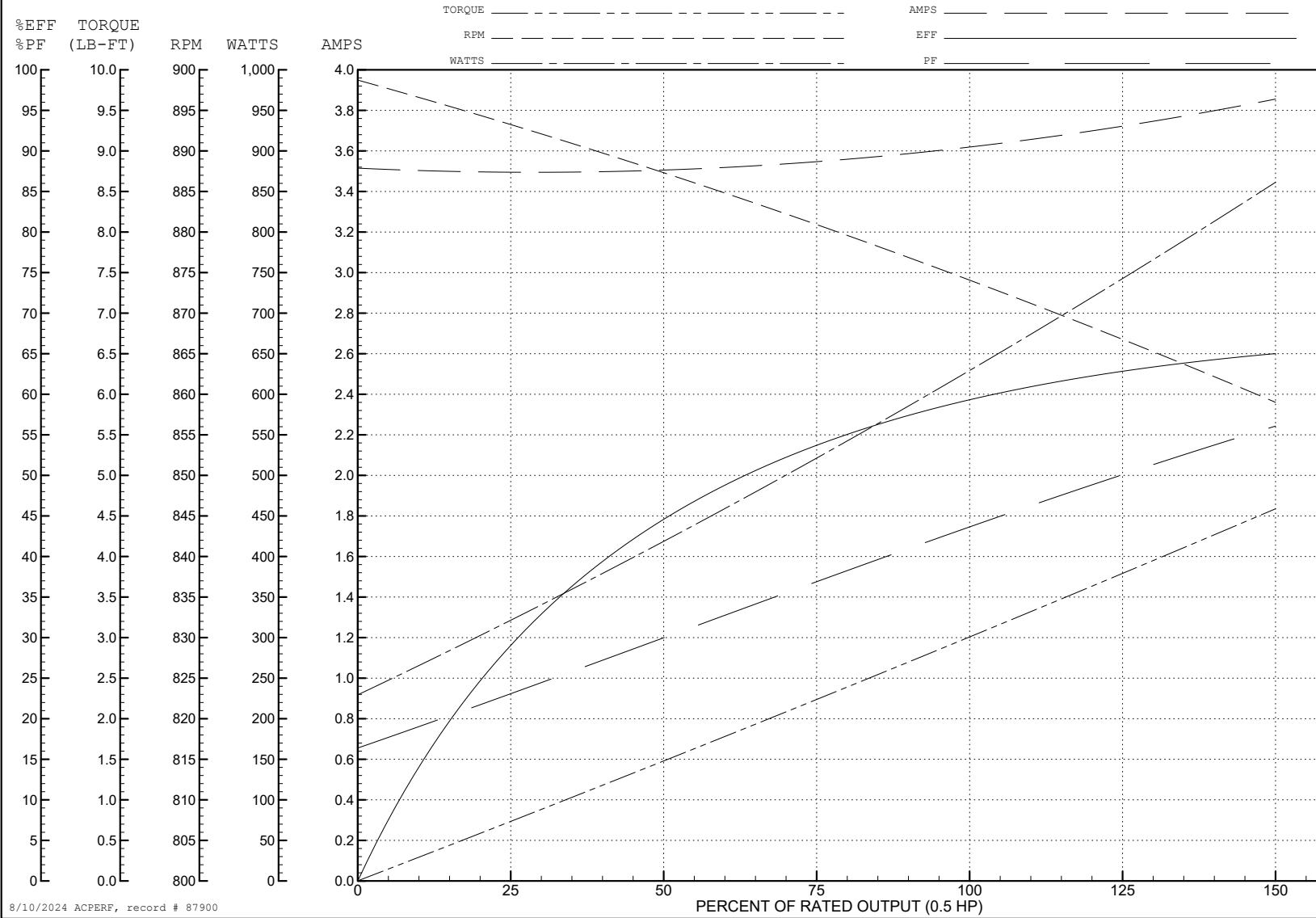
ABB Motors and Mechanical Inc.

WINDING # 35WGG366

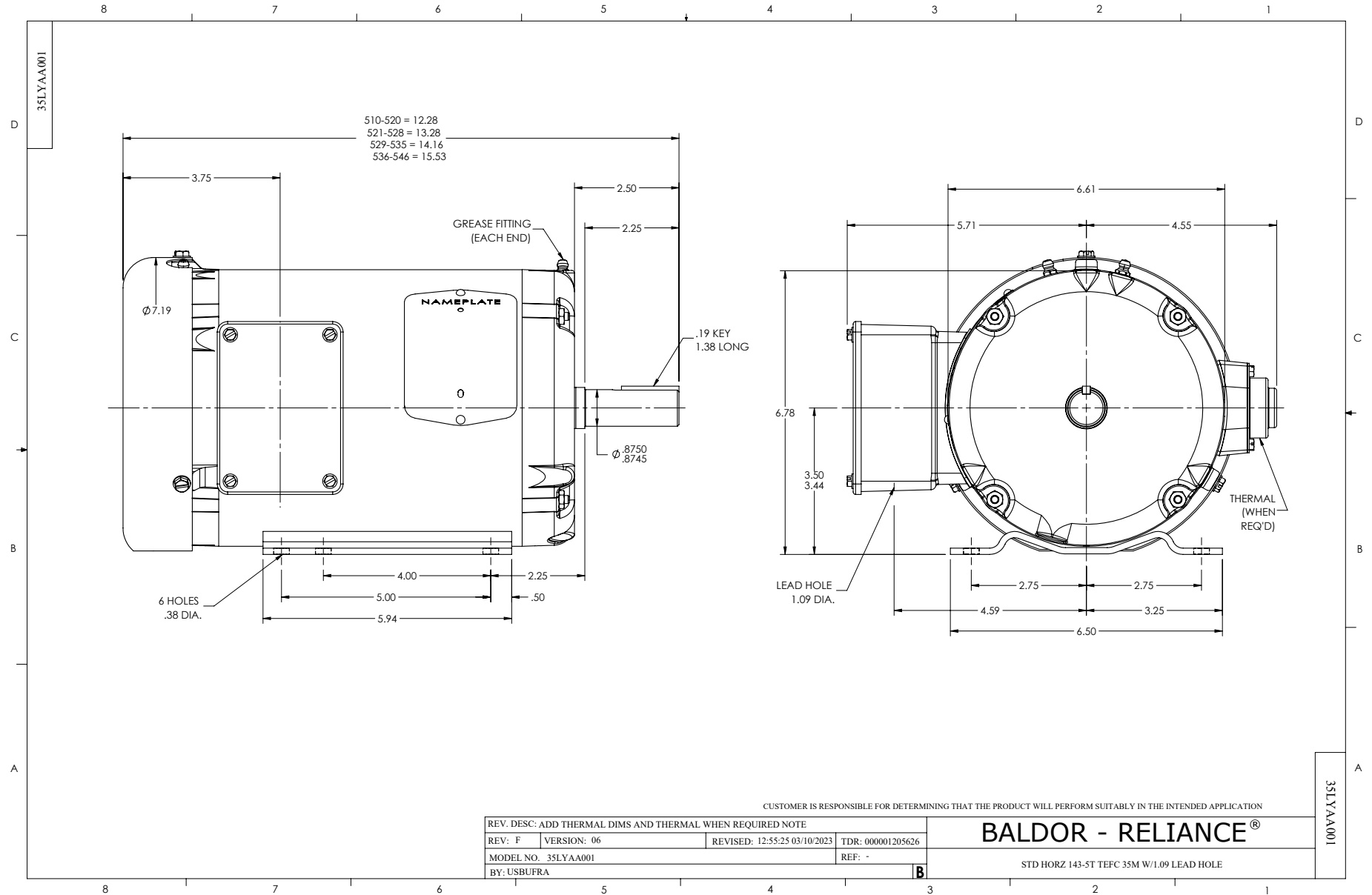
0.5 HP 3 PH 60 HZ 874.1 RPM 230 V 3524M

Typical performance - not guaranteed values.

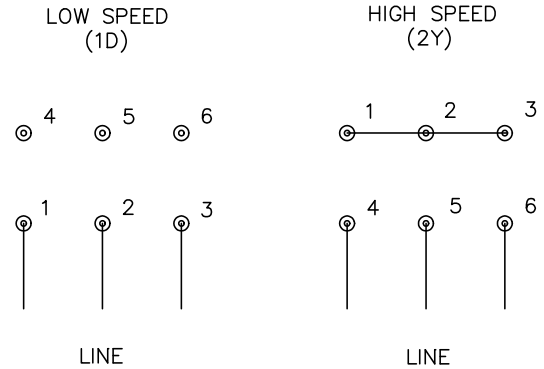
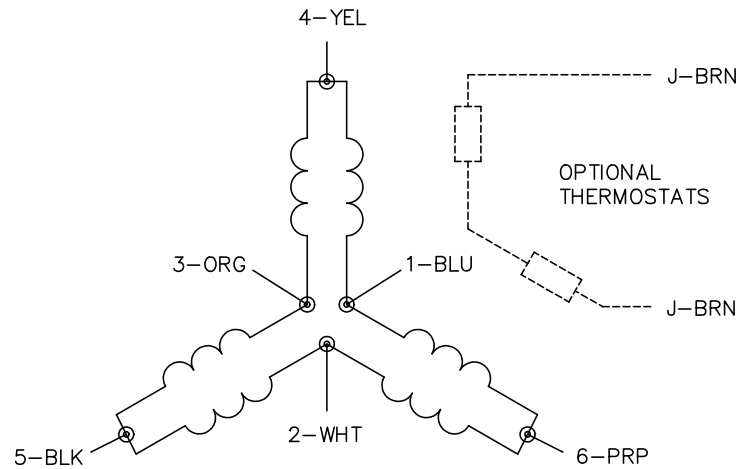
TORQUES (LB-FT): PO=12.8 PU=8.21 LR=9.46 LRA=12.8



8/10/2024 ACPERF, record # 87900



CD0011



NOTES:

1. INTERCHANGE ANY TWO LINE LEADS TO REVERSE ROTATION.
2. OPTIONAL THERMOSTATS ARE PROVIDED WHEN SPECIFIED.
3. ACTUAL NUMBER OF INTERNAL PARALLEL CIRCUITS MAY BE A MULTIPLE OF THOSE SHOWN ABOVE.
4. LEAD COLORS ARE OPTIONAL. LEADS MUST ALWAYS BE NUMBERED AS SHOWN.

CD0011

REV. DESC: REVISE TO SHOW OPTIONAL COLORS			
REV. LTR: F	BY: JLP	REVISED: 01/21/99 5:04	TDR: 0171435
110000		FILE: DWG\142.wg	MDL: -
		MTL: -	

BALDOR ELECTRIC Co.

3PH, SV, 6 LEADS, 2-SPEED 1-WINDING CONSTANT TORQUE