

BALDOR • RELIANCE

Customer information packet

M1226T

10/4.4HP, 1740/1160RPM, 3PH, 60HZ, 254T, 3750

Class - None

Division - Not Applicable

Specifications

Enclosure	OPSB
Frame	256T
Frame Material	Steel
Frequency	60.00 Hz
Haz Area Class and Group	None
Haz Area Division	Not Applicable
Motor Letter Type	Three Phase
Output @ Frequency	4.400 HP @ 60 HZ 10.000 HP @ 60 HZ
Phase	3
Synchronous Speed @ Frequency	1200 RPM @ 60 HZ
Voltage @ Frequency	460.0 V @ 60 HZ
Agency Approvals	UR CSA
Ambient Temperature	40 °C
Auxillary Box	No Auxillary Box
Auxillary Box Lead Termination	None
Base Indicator	Rigid
Bearing Grease Type	Polyrex EM (-20F +300F)
Blower	None
Current @ Voltage	12.700 A @ 460.0 V
Design Code	B
Drip Cover	No Drip Cover
Duty Rating	CONT
Electrically Isolated Bearing	Not Electrically Isolated
Feedback Device	NO FEEDBACK
Front Face Code	Standard
Front Shaft Indicator	None
Heater Indicator	No Heater
High Voltage Full Load Amps	7.2 a
Insulation Class	F
Inverter Code	Not Inverter

Part detail

Revision	Q
Type	AC
Mech. spec.	37L152
Base	
Status	PRD/A
Elec. spec.	37WGS194
Layout	37LYL152
Eff. date	05-13-2024
CD Diagram	CD0013
Poles	04/06
Leads	6#14
Proprietary	False
Created date	10-06-2006

KVA Code	J
Lifting Lugs	Standard Lifting Lugs
Locked Bearing Indicator	No Locked Bearing
Motor Lead Exit	Ko Box
Motor Lead Quantity/Wire Size	6 @ 14 AWG
Motor Lead Termination	Flying Leads
Motor Standards	NEMA
Motor Type	3750M
Mounting Arrangement	F1
Number of Poles	4 6
Overall Length	22.25 IN
Product Family	General Purpose
Pulley End Bearing Type	Ball
Pulley Face Code	Standard
Pulley Shaft Indicator	Standard
Rodent Screen	None
Service Factor	1.15
Shaft Diameter	1.625 IN
Shaft Extension Location	Pulley End
Shaft Ground Indicator	No Shaft Grounding
Shaft Rotation	Reversible
Shaft Slinger Indicator	No Slinger
Speed	1160 rpm 1740 rpm
Speed Code	2S-2W-VT
Starting Method	Direct on line
Thermal Device - Bearing	None
Thermal Device - Winding	None
Vibration Sensor Indicator	No Vibration Sensor
Winding Thermal 1	None
Winding Thermal 2	None

Nameplate

NP1256L									
CAT.NO.	M1226T								
SPEC.	37L152S194								
HP	10/4.4								
VOLTS	460								
AMP	12.7/7.2								
RPM	1740/1160								
FRAME	256T		HZ	60		PH	3		
SER.F.	1.15	CODE	J	DES	B	CLASS	F		
NEMA-NOM-EFF		PF							
RATING	40C AMB-CONT								
CC									
DE	6309		ODE	6206					
ENCL	OPSB	SN							

Accessories

Part number	Description	Multiplier
39-3400	C FACE KIT	A8

AC Induction Motor Performance Data

Record # 23343

Typical performance - not guaranteed values

Winding: 37WGS194-R001		Type: 3750M	Enclosure: TEFC		
Nameplate Data		460 V, 60 Hz: High Speed Connection			
Rated Output (HP)	10/4.4	Full Load Torque	30.4 LB-FT		
Volts	460	Start Configuration	direct on line		
Full Load Amps	12.7/7.2	Breakdown Torque	116 LB-FT		
R.P.M.	1760/1160	Pull-up Torque	45.3 LB-FT		
Hz	60 Phase	3	Locked-rotor Torque	76.6 LB-FT	
NEMA Design Code	B	KVA Code	J	Starting Current	100 A
Service Factor (S.F.)		1.15	No-load Current	5.34 A	
NEMA Nom. Eff.	0	Power Factor	0	Line-line Res. @ 25°C	1.87 Ω
Rating - Duty		40C AMB-CONT	Temp. Rise @ Rated Load	73°C	
S.F. Amps			Temp. Rise @ S.F. Load	92°C	

Load Characteristics 460 V, 60 Hz, 10 HP

% of Rated Load	25	50	75	100	125	150	S.F.
Power Factor	46	71	81	87	89	91	88
Efficiency	82.7	87.4	87.3	85.7	83.6	80.9	84.4
Speed	1786	1770	1754	1735	1715	1691	1723
Line amperes	5.89	7.62	9.76	12.7	15.6	19	14.4

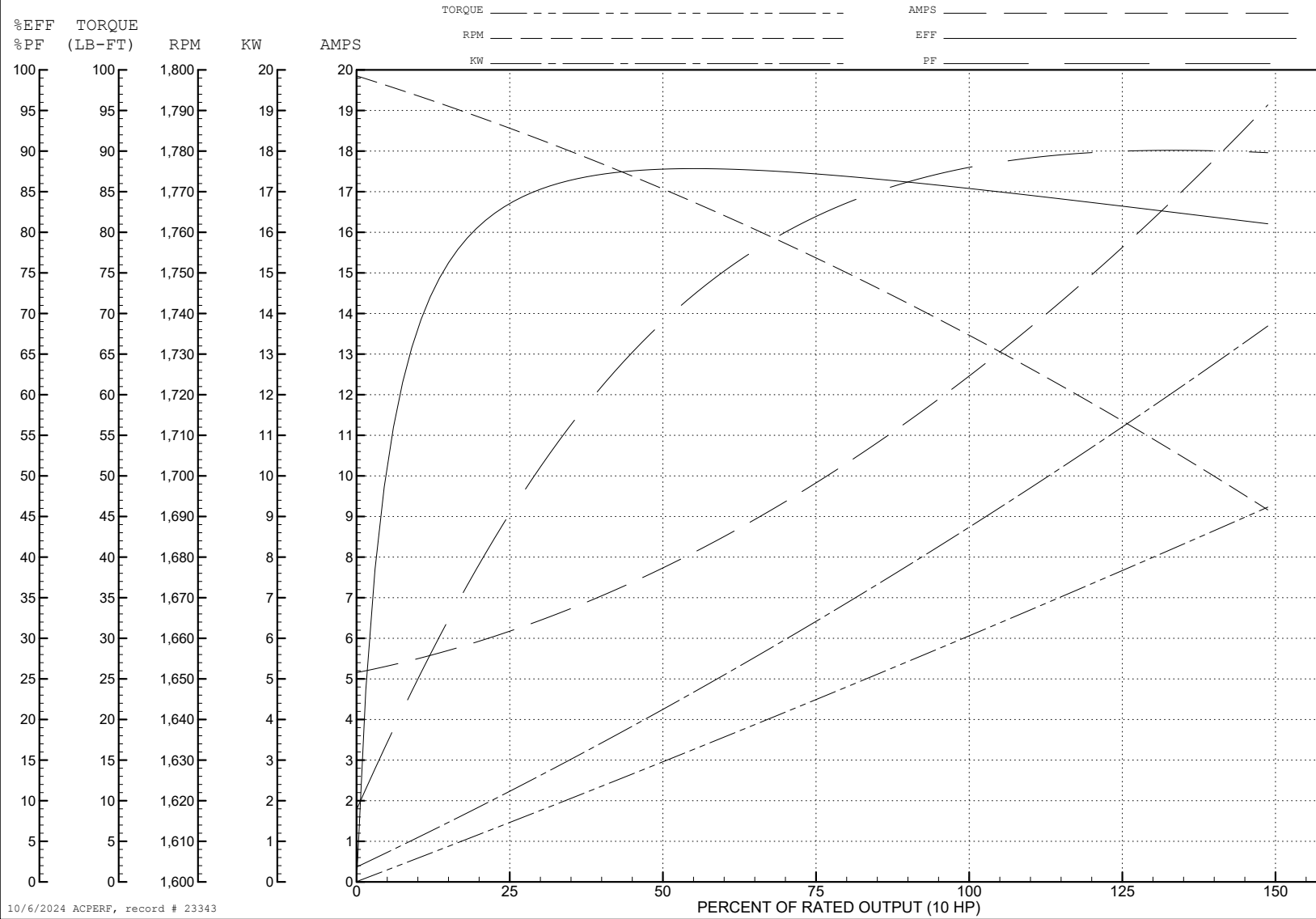
ABB Motors and Mechanical Inc.

WINDING # 37WGS194

Typical performance - not guaranteed values.

10 HP 3 PH 60 HZ 1735 RPM 460 V 3750M

TORQUES (LB-FT): PO=116 PU=45.3 LR=76.6 LRA=100



10/6/2024 ACPERF, record # 23343

AC Induction Motor Performance Data

Record # 23344

Typical performance - not guaranteed values

Winding: 37WGS194-R001		Type: 3750M		Enclosure: TEFC	
Nameplate Data			460 V, 60 Hz: Low Speed Connection		
Rated Output (HP)	10/4.4		Full Load Torque	20 LB-FT	
Volts	460		Start Configuration	direct on line	
Full Load Amps	12.7/7.2		Breakdown Torque	77.7 LB-FT	
R.P.M.	1760/1160		Pull-up Torque	24.7 LB-FT	
Hz	60 Phase	3	Locked-rotor Torque	37.3 LB-FT	
NEMA Design Code	B KVA Code	J	Starting Current	40.6 A	
Service Factor (S.F.)	1.15		No-load Current	4.64 A	
NEMA Nom. Eff.	0 Power Factor	0	Line-line Res. @ 25°C	4.21 Ω	
Rating - Duty	40C AMB-CONT		Temp. Rise @ Rated Load	63°C	
S.F. Amps			Temp. Rise @ S.F. Load	77°C	

Load Characteristics 460 V, 60 Hz, 4.4 HP

% of Rated Load	25	50	75	100	125	150	S.F.
Power Factor	30	48	61	70	76	79	74
Efficiency	71.1	80.5	82.5	82.3	80.7	78.3	81.3
Speed	1190	1181	1171	1160	1146	1129	1152
Line amperes	4.82	5.34	6.12	7.17	8.42	10	7.92

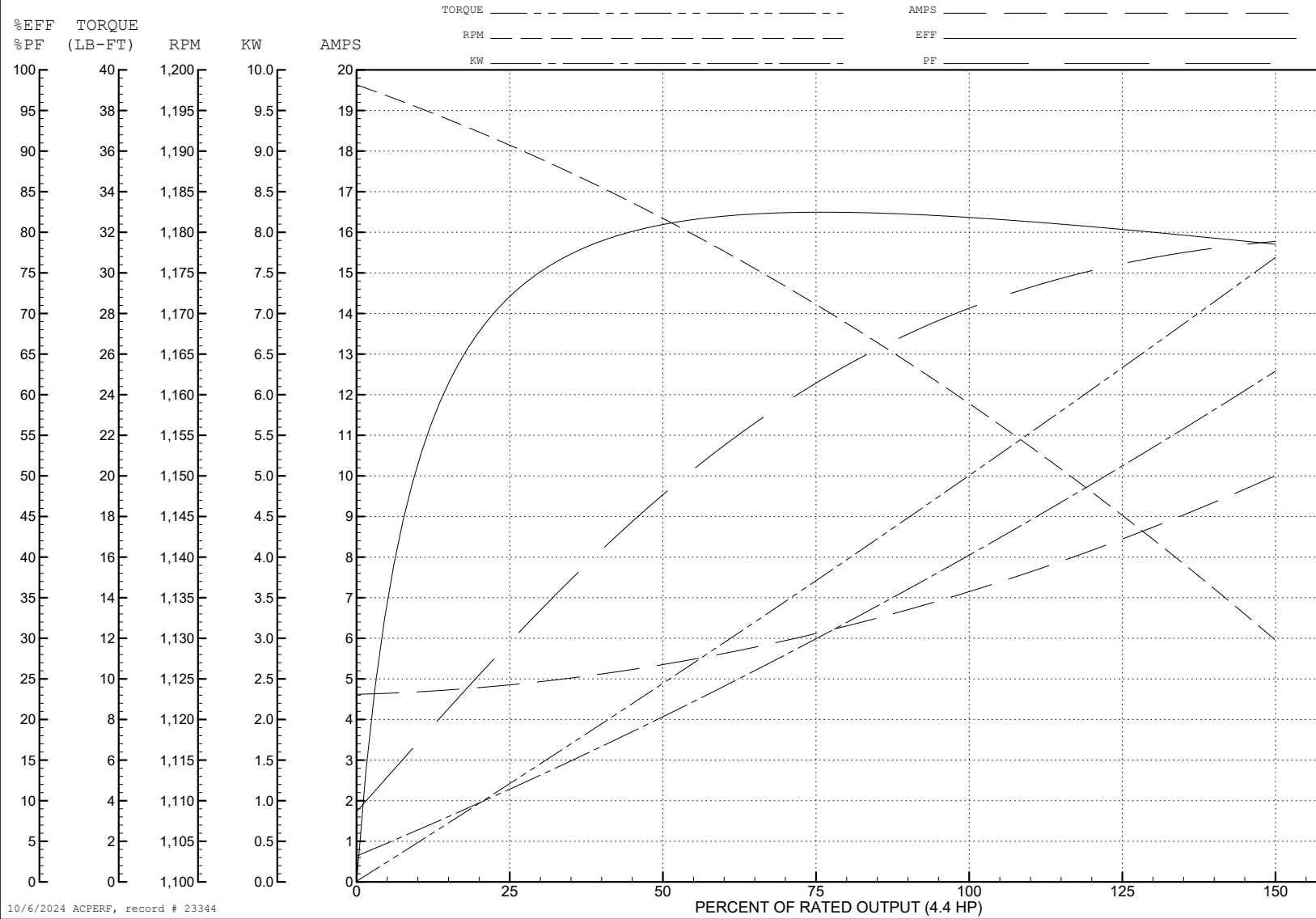
ABB Motors and Mechanical Inc.

WINDING # 37WGS194

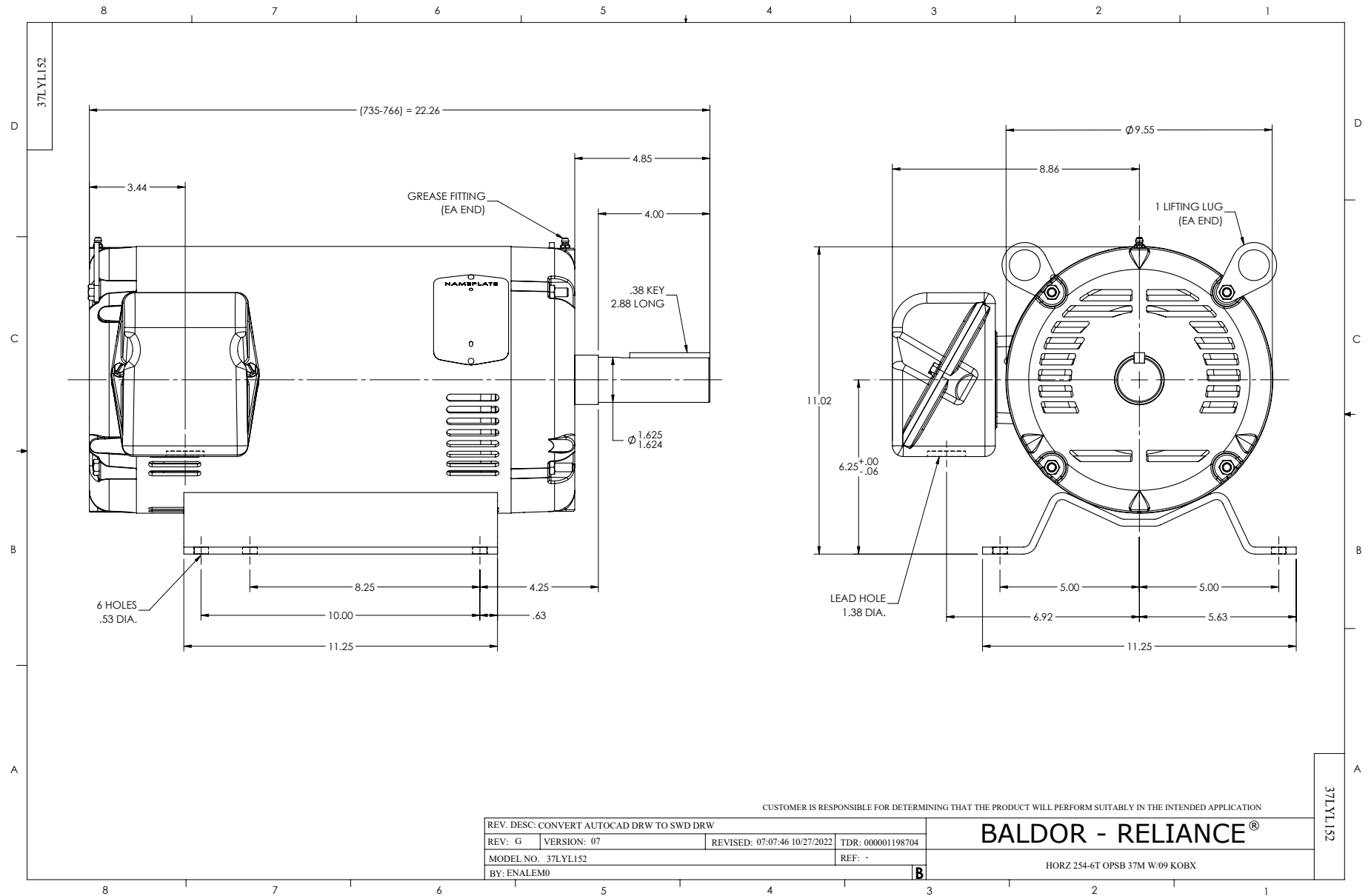
4.4 HP 3 PH 60 HZ 1160 RPM 460 V 3750M

Typical performance - not guaranteed values.

TORQUES (LB-FT): PO=77.7 PU=24.7 LR=37.3 LRA=40.6



10/6/2024 ACPERF, record # 23344



CUSTOMER IS RESPONSIBLE FOR DETERMINING THAT THE PRODUCT WILL PERFORM SUITABLY IN THE INTENDED APPLICATION

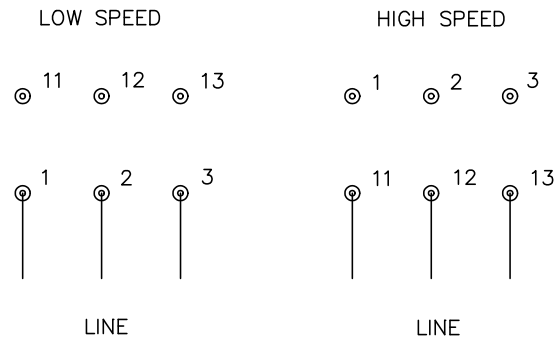
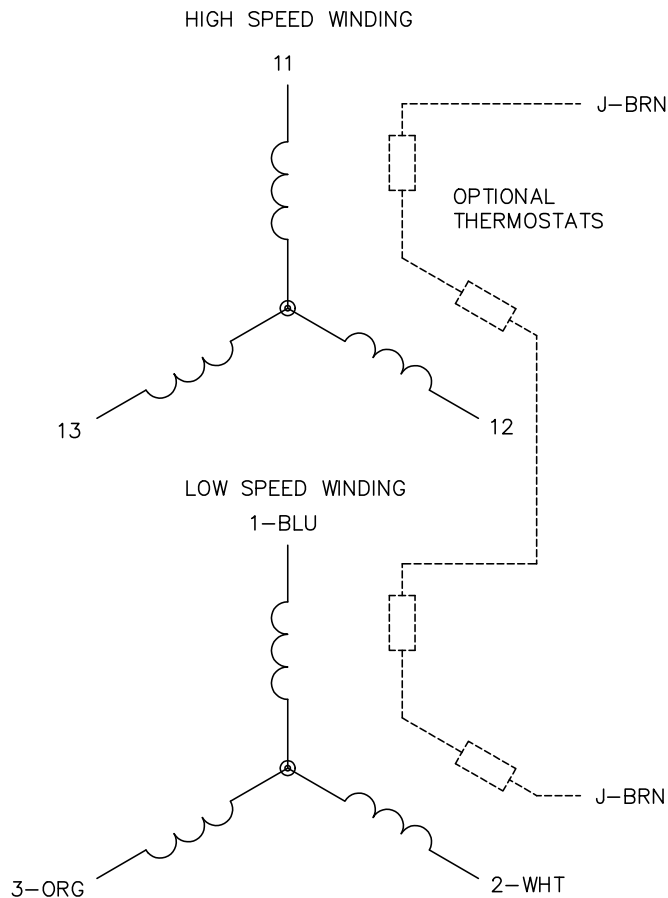
REV. DESC: CONVERT AUTOCAD DRW TO SWD DRW			
REV: G	VERSION: 07	REVISED: 07:07:46 10/27/2022	TDR: 000001198704
MODEL NO. 37LYL152		REF: -	
BY: ENALEM0		B	

BALDOR - RELIANCE®

HORZ 254-6T OPSB 37M W/09 KOBX

37LYL152

CD0013



NOTES:

1. INTERCHANGE ANY TWO LINE LEADS TO REVERSE ROTATION.
2. OPTIONAL THERMOSTATS ARE PROVIDED WHEN SPECIFIED.
3. ACTUAL NUMBER OF INTERNAL PARALLEL CIRCUITS MAY VARY.
4. LEAD COLORS ARE OPTIONAL. LEADS MUST ALWAYS BE NUMBERED AS SHOWN.

CD0013

REV. DESC: REVISE TO SHOW OPTIONAL COLORS			
REV. LTR: D	BY: JLP	REVISED: 01/22/99 8:50	TDR: 0171435
Ω 10000		FILE: AAA00005143	MDL: -
		MTL: -	

BALDOR ELECTRIC Co.

3PH, SV, 6 LEADS, 2-SPEED 2-WINDING