



---

# Customer information packet

## M1222T

2/.89HP, 1725/1140RPM, 3PH, 60HZ, 182T, 3628M

Class - None

Division - Not Applicable

## Specifications

Enclosure	OPEN
Frame	182T
Frame Material	Steel
Frequency	60.00 Hz
Haz Area Class and Group	None
Haz Area Division	Not Applicable
Motor Letter Type	Three Phase
Output @ Frequency	2.000 HP @ 60 HZ .890 HP @ 60 HZ
Phase	3
Synchronous Speed @ Frequency	1200 RPM @ 60 HZ
Voltage @ Frequency	460.0 V @ 60 HZ
Agency Approvals	UR CSA
Ambient Temperature	40 °C
Auxillary Box	No Auxillary Box
Auxillary Box Lead Termination	None
Base Indicator	Rigid
Bearing Grease Type	Polyrex EM (-20F +300F)
Blower	None
Current @ Voltage	3.000 A @ 460.0 V
Design Code	B
Drip Cover	No Drip Cover
Duty Rating	CONT
Electrically Isolated Bearing	Not Electrically Isolated
Feedback Device	NO FEEDBACK
Front Face Code	Standard
Front Shaft Indicator	None
Heater Indicator	No Heater
High Voltage Full Load Amps	1.6 a
Insulation Class	F
Inverter Code	Not Inverter

## Part detail

Revision	AB
Type	AC
Mech. spec.	36B001
Base	
Status	PRD/A
Elec. spec.	36WG3120
Layout	36LYB001
Eff. date	05-08-2024
CD Diagram	CD0013
Poles	04/06
Leads	6#16
Proprietary	False
Created date	01-01-0001

<b>KVA Code</b>	F
<b>Lifting Lugs</b>	No Lifting Lugs
<b>Locked Bearing Indicator</b>	No Locked Bearing
<b>Motor Lead Exit</b>	Ko Box
<b>Motor Lead Quantity/Wire Size</b>	6 @ 16 AWG
<b>Motor Lead Termination</b>	Flying Leads
<b>Motor Standards</b>	NEMA
<b>Motor Type</b>	3628M
<b>Mounting Arrangement</b>	F1
<b>Number of Poles</b>	4 6
<b>Overall Length</b>	15.00 IN
<b>Product Family</b>	General Purpose
<b>Pulley End Bearing Type</b>	Ball
<b>Pulley Face Code</b>	Standard
<b>Pulley Shaft Indicator</b>	Standard
<b>Rodent Screen</b>	None
<b>Service Factor</b>	1.15
<b>Shaft Diameter</b>	1.125 IN
<b>Shaft Extension Location</b>	Pulley End
<b>Shaft Ground Indicator</b>	No Shaft Grounding
<b>Shaft Rotation</b>	Reversible
<b>Shaft Slinger Indicator</b>	No Slinger
<b>Speed</b>	1140 rpm 1725 rpm
<b>Speed Code</b>	2S-2W-VT
<b>Starting Method</b>	Direct on line
<b>Thermal Device - Bearing</b>	None
<b>Thermal Device - Winding</b>	None
<b>Vibration Sensor Indicator</b>	No Vibration Sensor
<b>Winding Thermal 1</b>	None
<b>Winding Thermal 2</b>	None

**Nameplate**

<b>NP1256L</b>									
<b>CAT.NO.</b>	M1222T								
<b>SPEC.</b>	36B01-3120								
<b>HP</b>	2/.89								
<b>VOLTS</b>	460								
<b>AMP</b>	3/1.6								
<b>RPM</b>	1725/1140								
<b>FRAME</b>	182T		<b>HZ</b>	60		<b>PH</b>	3		
<b>SER.F.</b>	1.15	<b>CODE</b>	F	<b>DES</b>	B	<b>CLASS</b>	F		
<b>NEMA-NOM-EFF</b>		<b>PF</b>							
<b>RATING</b>	40C AMB-CONT								
<b>CC</b>									
<b>DE</b>	6206		<b>ODE</b>	6205					
<b>ENCL</b>	OPEN	<b>SN</b>							

**Accessories**

<b>Part number</b>	<b>Description</b>	<b>Multiplier</b>
36-3403	C FACE KIT	A8
36EP1405A09SP	D-FLANGE KIT	

**AC Induction Motor Performance Data**

Record # 61298

Typical performance - not guaranteed values

Winding: 36WG3120-R002		Type: 3628M	Enclosure: TEFC
<b>Nameplate Data</b>			<b>460 V, 60 Hz: High Speed Connection</b>
Rated Output (HP)	2/.89	Full Load Torque	6 LB-FT
Volts	460	Start Configuration	direct on line
Full Load Amps	3/1.6	Breakdown Torque	16.5 LB-FT
R.P.M.	1725/1140	Pull-up Torque	12.7 LB-FT
Hz	60 Phase	Locked-rotor Torque	14.7 LB-FT
NEMA Design Code	B KVA Code	Starting Current	16.7 A
Service Factor (S.F.)	1.15	No-load Current	1.1 A
NEMA Nom. Eff.	0 Power Factor	Line-line Res. @ 25°C	14.3 Ω
Rating - Duty	40C AMB-CONT	Temp. Rise @ Rated Load	62°C
S.F. Amps		Temp. Rise @ S.F. Load	77°C
		Locked-rotor Power Factor	69.7
		Rotor inertia	0.263 LB-FT <sup>2</sup>

**Load Characteristics 460 V, 60 Hz, 2 HP**

% of Rated Load	25	50	75	100	125	150	S.F.
Power Factor	52	67	85	87	95	92	92
Efficiency	69.6	77.5	78.4	78.1	77	73.7	77.4
Speed	1775	1750	1736	1710	1691	1647	1699
Line amperes	1.3	1.8	2.1	2.7	3.1	3.9	2.94

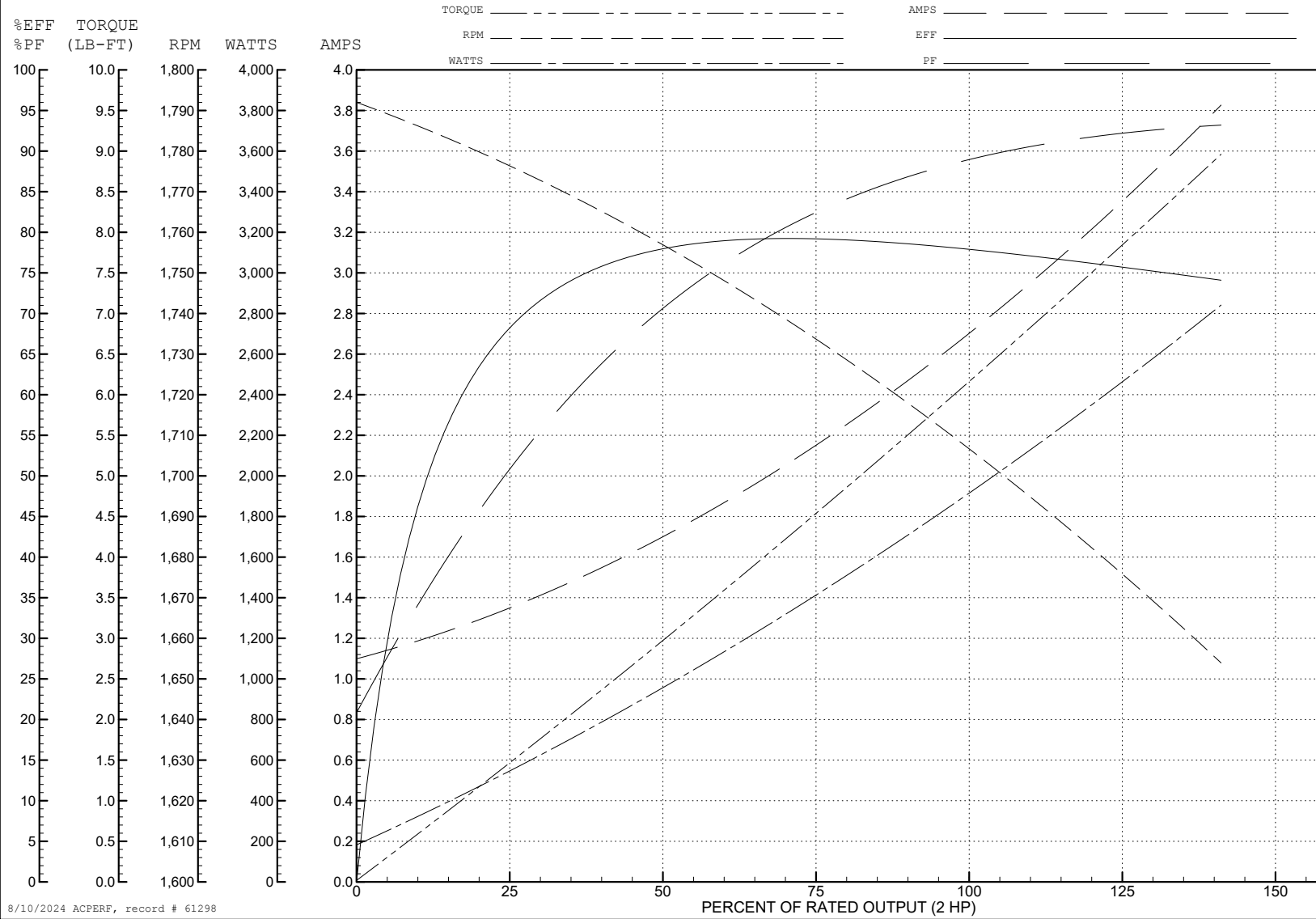
ABB Motors and Mechanical Inc.

WINDING # 36WG3120

Typical performance - not guaranteed values.

2 HP 3 PH 60 HZ 1710 RPM 460 V 3628M

TORQUES (LB-FT): PO=16.5 PU=12.7 LR=14.7 LRA=16.7



8/10/2024 ACPERF, record # 61298

**AC Induction Motor Performance Data**

Record # 61299

Typical performance - not guaranteed values

Winding: 36WG3120-R002		Type: 3628M	Enclosure: TEFC
<b>Nameplate Data</b>			<b>460 V, 60 Hz: Low Speed Connection</b>
Rated Output (HP)	2/.89	Full Load Torque	4 LB-FT
Volts	460	Start Configuration	direct on line
Full Load Amps	3/1.6	Breakdown Torque	13 LB-FT
R.P.M.	1725/1140	Pull-up Torque	8.2 LB-FT
Hz	60 Phase	Locked-rotor Torque	8.7 LB-FT
NEMA Design Code	B KVA Code	Starting Current	8.9 A
Service Factor (S.F.)	1.15	No-load Current	1.2 A
NEMA Nom. Eff.	0 Power Factor	Line-line Res. @ 25°C	25.3 Ω
Rating - Duty	40C AMB-CONT	Temp. Rise @ Rated Load	47°C
S.F. Amps		Temp. Rise @ S.F. Load	53°C
		Locked-rotor Power Factor	68.7
		Rotor inertia	0.263 LB-FT <sup>2</sup>

**Load Characteristics 460 V, 60 Hz, 0.89 HP**

% of Rated Load	25	50	75	100	125	150	S.F.
Power Factor	31	48	61	68	75	77	72
Efficiency	51.8	62.4	68.7	71.4	72.4	71.9	72
Speed	1190	1182	1172	1163	1151	1134	1156
Line amperes	1.3	1.4	1.5	1.7	1.9	2.2	1.82



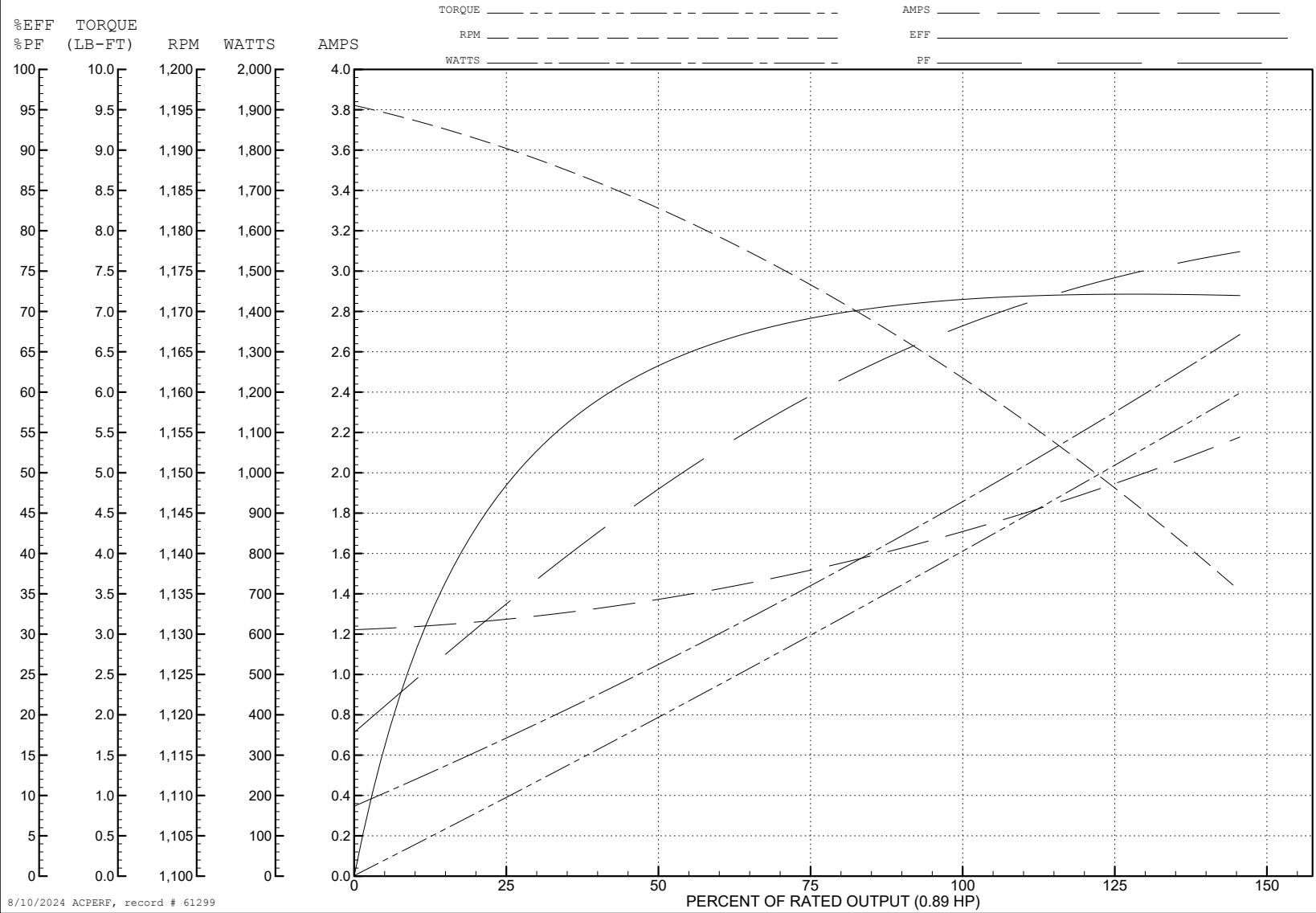
ABB Motors and Mechanical Inc.

WINDING # 36WG3120

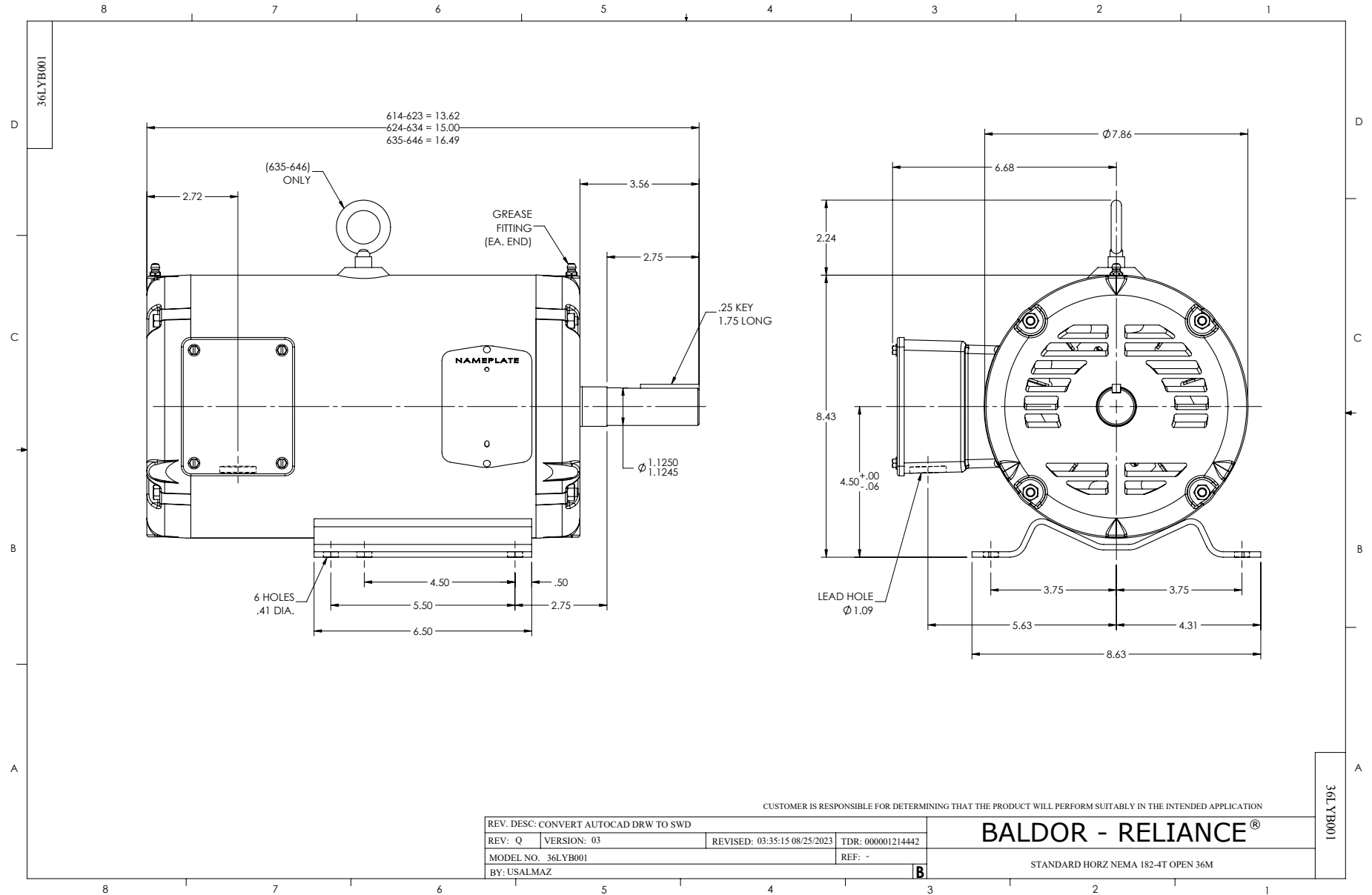
0.89 HP 3 PH 60 HZ 1163 RPM 460 V 3628M

Typical performance - not guaranteed values.

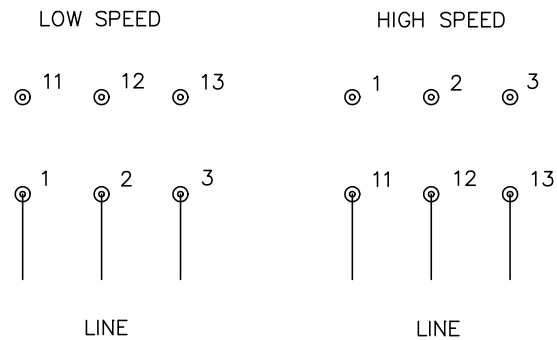
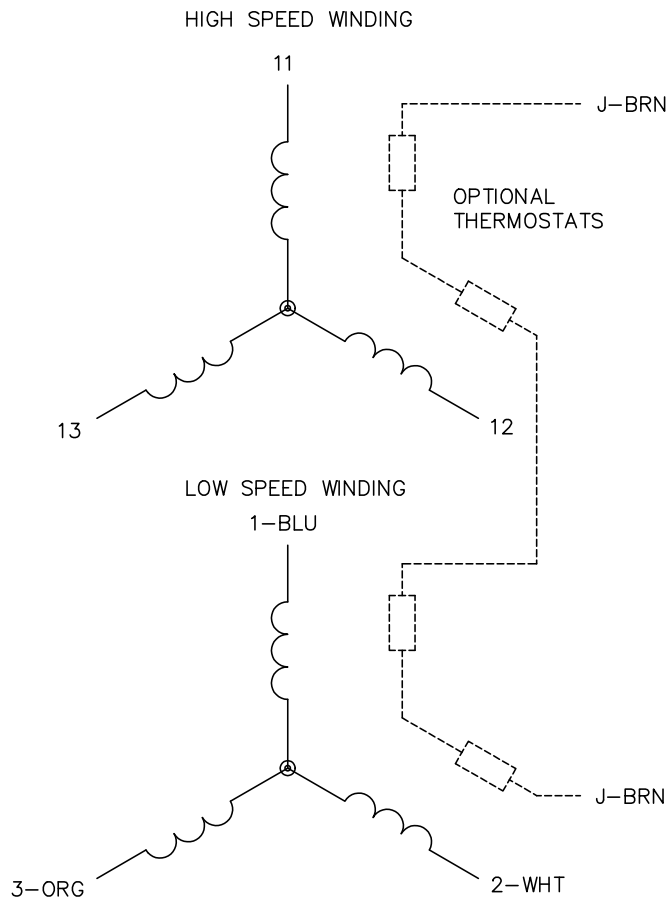
TORQUES (LB-FT): PO=13 PU=8.2 LR=8.7 LRA=8.9



8/10/2024 ACPERF, record # 61299



CD0013



NOTES:

1. INTERCHANGE ANY TWO LINE LEADS TO REVERSE ROTATION.
2. OPTIONAL THERMOSTATS ARE PROVIDED WHEN SPECIFIED.
3. ACTUAL NUMBER OF INTERNAL PARALLEL CIRCUITS MAY VARY.
4. LEAD COLORS ARE OPTIONAL. LEADS MUST ALWAYS BE NUMBERED AS SHOWN.

CD0013

REV. DESC: REVISE TO SHOW OPTIONAL COLORS			
REV. LTR: D	BY: JLP	REVISED: 01/22/99 8:50	TDR: 0171435
Ω 10000		FILE: AAA00005143	MDL: -
		MTL: -	

**BALDOR ELECTRIC Co.**

3PH, SV, 6 LEADS, 2-SPEED 2-WINDING