

ABB BALDOR RELIANCE III



Customer information packet

M1219

.75/.33HP, 1720/1160RPM, 3PH, 60HZ, 56, 3520M

Class - None

Division - Not Applicable

Specifications

Enclosure	OPEN
Frame	56
Frame Material	Steel
Frequency	60.00 Hz
Haz Area Class and Group	None
Haz Area Division	Not Applicable
Motor Letter Type	Three Phase
Output @ Frequency	.750 HP @ 60 HZ .330 HP @ 60 HZ
Phase	3
Synchronous Speed @ Frequency	1200 RPM @ 60 HZ
Voltage @ Frequency	460.0 V @ 60 HZ
Agency Approvals	UR CSA
Ambient Temperature	40 °C
Auxiliary Box	NO AUXILLARY BOX
Auxiliary Box Lead Termination	None
Base Indicator	Rigid
Bearing Grease Type	Polyrex EM (-20F +300F)
Blower	None
Current @ Voltage	1.260 A @ 460.0 V
Design Code	B
Drip Cover	No Drip Cover
Duty Rating	CONT
Electrically Isolated Bearing	Not Electrically Isolated
Feedback Device	NO FEEDBACK
Front Shaft Indicator	None
Heater Indicator	No Heater
High Voltage Full Load Amps	0.9 a
Insulation Class	F
Inverter Code	Not Inverter
KVA Code	J

Part Detail

Revision	D
Type	AC
Mech. spec.	35B011
Base	
Status	PRD/A
Elec. spec.	35WGG354
Layout	35LYB011
Eff. date	07-02-2024
CD Diagram	CD0013
Poles	04/06
Leads	6#18 Y
Proprietary	False
Created date	02-23-2023

Lifting Lugs	No Lifting Lugs
Locked Bearing Indicator	No Locked Bearing
Motor Lead Quantity/Wire Size	6 @ 18 AWG
Motor Lead Termination	Flying Leads
Motor Standards	NEMA
Motor Type	3520M
Mounting Arrangement	F1
Number of Poles	4 6
Overall Length	11.07 IN
Product Family	General Purpose
Pulley End Bearing Type	Ball
Pulley Face Code	Standard
Pulley Shaft Indicator	Standard
Rodent Screen	None
Service Factor	1.15
Shaft Diameter	0.625 IN
Shaft Ground Indicator	No Shaft Grounding
Shaft Rotation	Reversible
Shaft Slinger Indicator	No Slinger
Speed	1160 rpm 1720 rpm
Speed Code	2S-2W-VT
Starting Method	Direct on line
Thermal Device - Bearing	None
Thermal Device - Winding	None
Vibration Sensor Indicator	No Vibration Sensor
Winding Thermal 1	None
Winding Thermal 2	None

Nameplate

NP1256L										
CAT.NO.	M1219									
SPEC.	35B011G354G1									
HP	.75/.33									
VOLTS	460									
AMP	1.26/.89									
RPM	1720/1160									
FRAME	56		HZ	60		PH	3			
SER.F.	1.15	CODE	J	DES	B	CLASS	F			
NEMA-NOM-EFF		PF								
RATING	40C AMB-CONT									
CC										
DE	6205		ODE	6203						
ENCL	OPEN	SN								
	SFA 1.45									

Accessories

Part number	Description	Multiplier
35-8764	C FACE KIT	
35EP1604A01SP	D-FLANGE KIT	

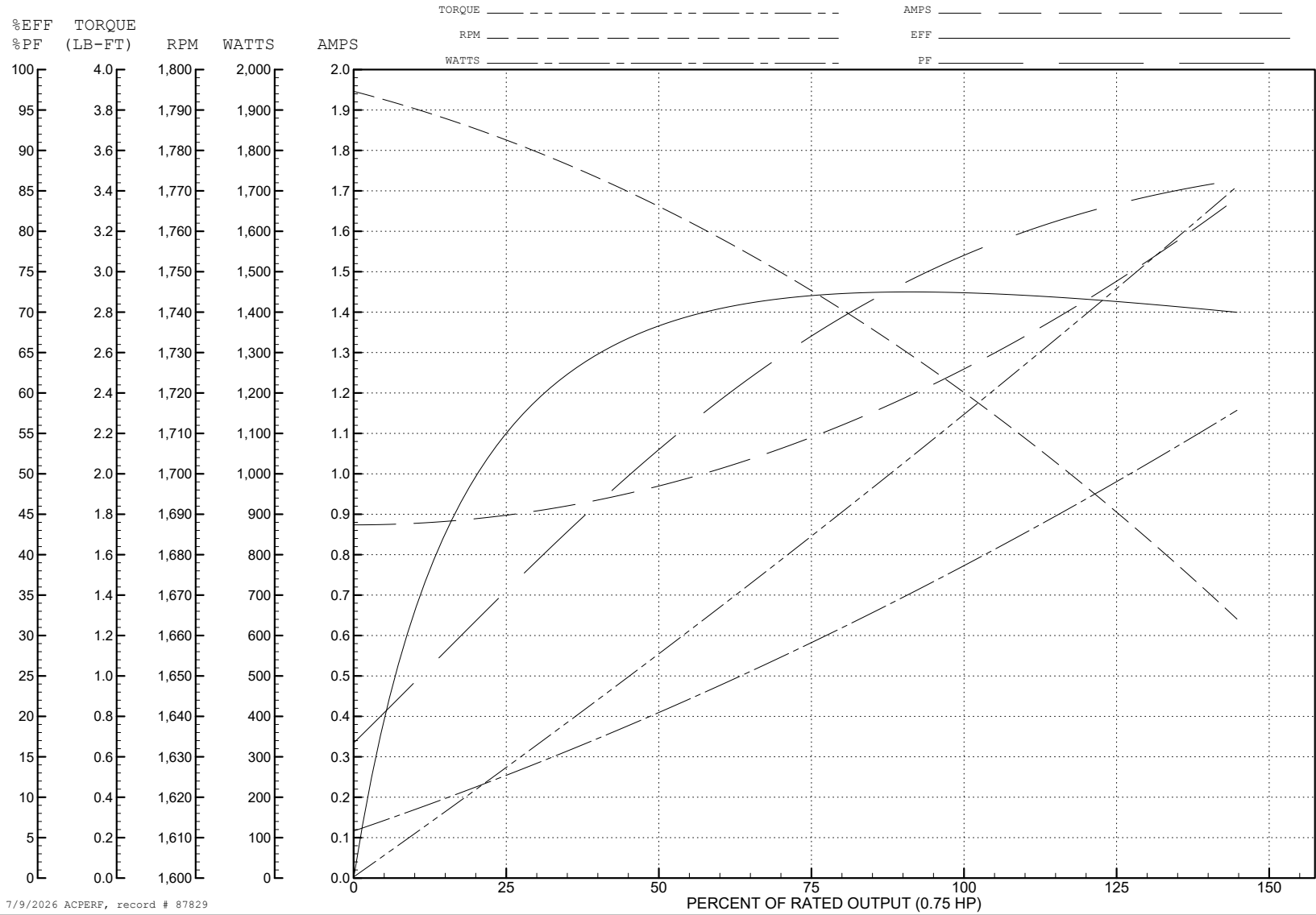
ABB Motors and Mechanical Inc.

WINDING # 35WGG354

0.75 HP 3 PH 60 HZ 1722 RPM 460 V 3520M

Typical performance - not guaranteed values.

TORQUES (LB-FT): PO=6.93 PU=4.25 LR=5.54 LRA=7.21



7/9/2026 ACPERF, record # 87829

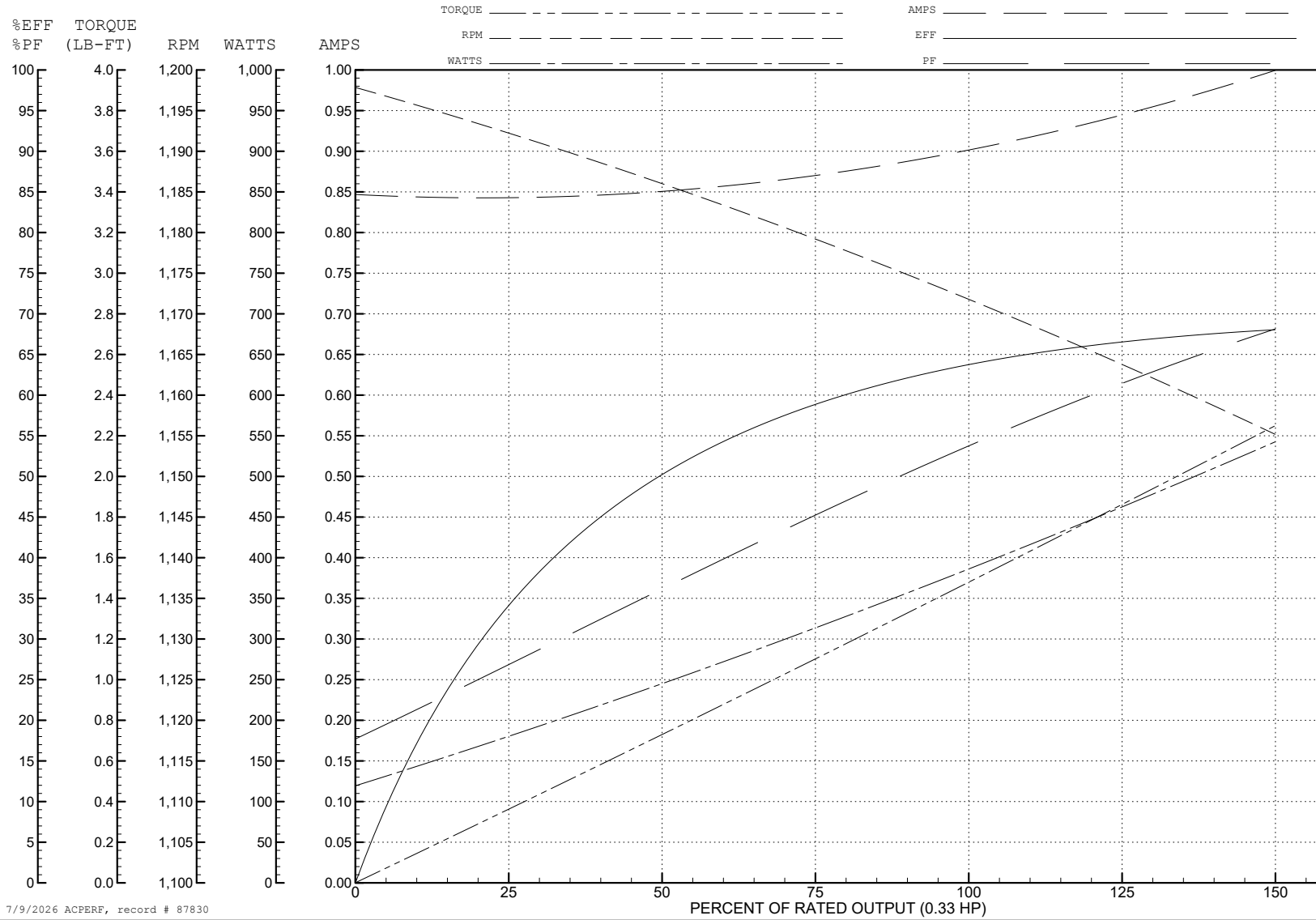
ABB Motors and Mechanical Inc.

WINDING # 35WGG354

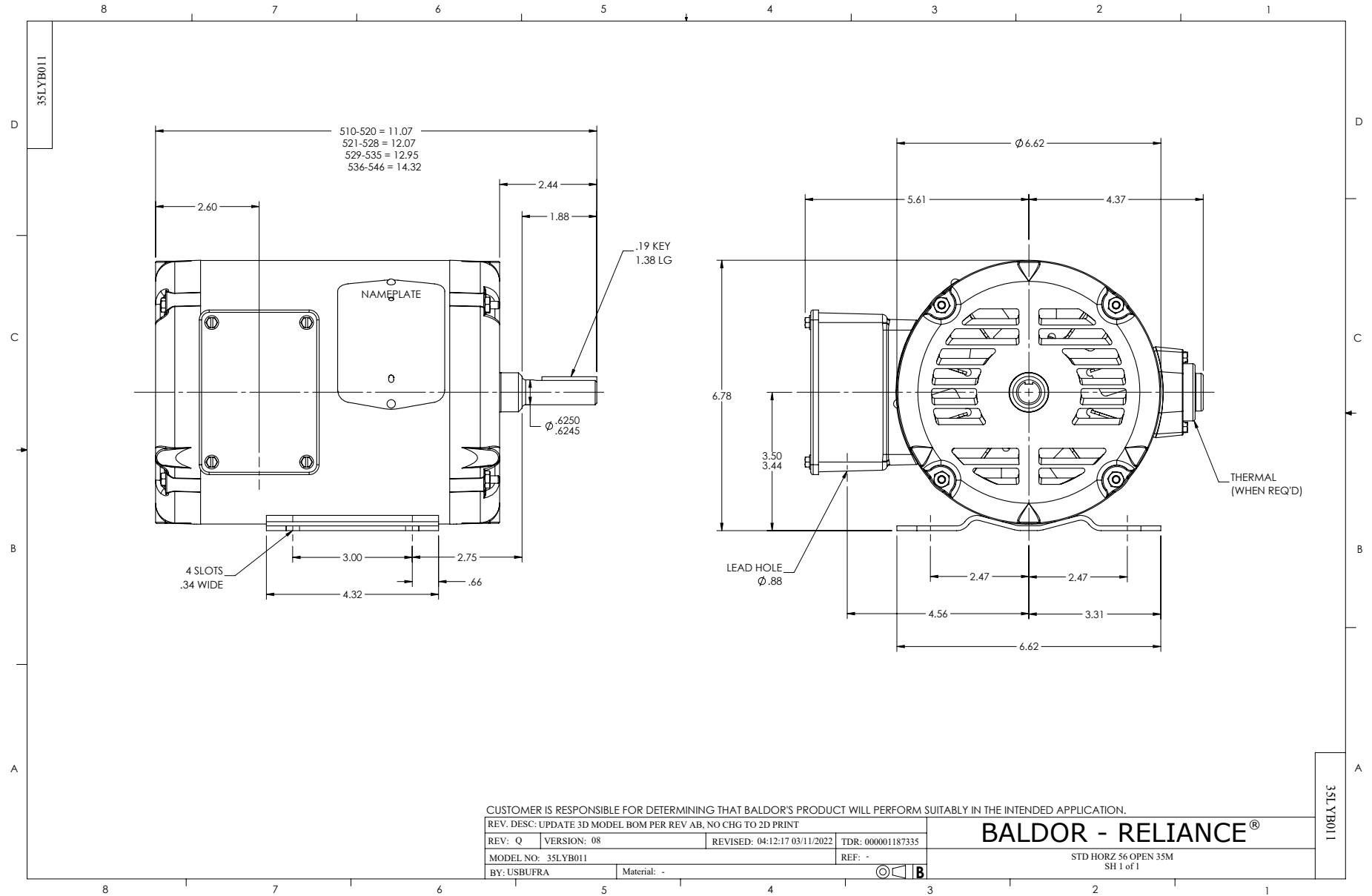
0.33 HP 3 PH 60 HZ 1172 RPM 460 V 3520M

Typical performance - not guaranteed values.

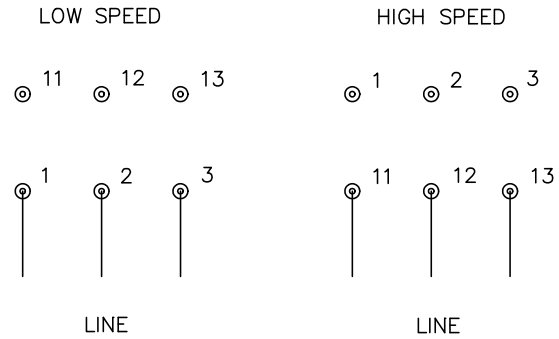
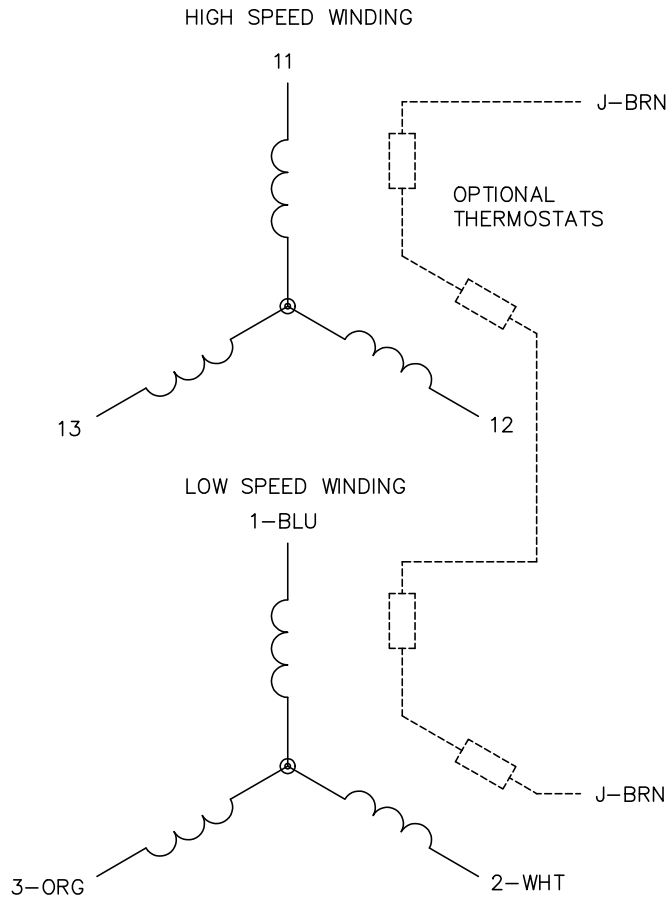
TORQUES (LB-FT): PO=5.93 PU=2.76 LR=4.06 LRA=4.11



7/9/2026 ACPERF, record # 87830



CD0013



NOTES:

1. INTERCHANGE ANY TWO LINE LEADS TO REVERSE ROTATION.
2. OPTIONAL THERMOSTATS ARE PROVIDED WHEN SPECIFIED.
3. ACTUAL NUMBER OF INTERNAL PARALLEL CIRCUITS MAY VARY.
4. LEAD COLORS ARE OPTIONAL. LEADS MUST ALWAYS BE NUMBERED AS SHOWN.

CD0013

REV. DESC: REVISE TO SHOW OPTIONAL COLORS			
REV. LTR: D	BY: JLP	REVISED: 01/22/99 8:50	TDR: 0171435
Q 10000		FILE: AAA00005143	MDL: -
		MTL: -	

BALDOR ELECTRIC Co.

3PH, SV, 6 LEADS, 2-SPEED 2-WINDING