

BALDOR® • RELIANCE™

Customer information packet

M1212T

20/5HP, 1760/880RPM, 3PH, 60HZ, 256T, 3936M, O

Class -

Division - Not Applicable

Copyright © All product information within this document is subject to ABB Motors and Mechanical Inc. copyright © protection, unless otherwise noted.

4/18/2025 3:02:39 PM

Specifications

Enclosure	OPSB
Frame	256T
Frame Material	Steel
Frequency	60.00 Hz
Haz Area Division	Not Applicable
Motor Letter Type	Three Phase
Output @ Frequency	20.000 HP @ 60 HZ 5.000 HP @ 60 HZ
Phase	3
Synchronous Speed @ Frequency	1800 RPM @ 60 HZ
Voltage @ Frequency	460.0 V @ 60 HZ
Agency Approvals	CSA UR
Ambient Temperature	40 °C
Auxillary Box	No Auxillary Box
Auxillary Box Lead Termination	None
Base Indicator	Rigid
Bearing Grease Type	Polyrex EM (-20F +300F)
Blower	None
Current @ Voltage	26.000 A @ 460.0 V
Design Code	B
Drip Cover	No Drip Cover
Duty Rating	CONT
Electrically Isolated Bearing	Not Electrically Isolated
Feedback Device	NO FEEDBACK
Front Face Code	Standard
Front Shaft Indicator	None
Heater Indicator	No Heater
High Voltage Full Load Amps	11.5 a
Insulation Class	F
Inverter Code	Not Inverter
KVA Code	H

Part detail

Revision	X
Type	AC
Mech. spec.	39D101
Base	
Status	PRD/A
Elec. spec.	39WGW485
Layout	39LYD101
Eff. date	02-08-2024
CD Diagram	CD0032
Poles	04/08
Leads	6#12
Proprietary	False
Created date	05-08-2006

Lifting Lugs	Standard Lifting Lugs
Locked Bearing Indicator	No Locked Bearing
Motor Lead Exit	Ko Box
Motor Lead Quantity/Wire Size	6 @ 12 AWG
Motor Lead Termination	Flying Leads
Motor Standards	NEMA
Motor Type	3936M
Mounting Arrangement	F1
Number of Poles	4 8
Overall Length	21.69 IN
Product Family	General Purpose
Pulley End Bearing Type	Ball
Pulley Face Code	Standard
Pulley Shaft Indicator	Standard
Rodent Screen	None
Service Factor	1.15
Shaft Diameter	1.625 IN
Shaft Extension Location	Pulley End
Shaft Ground Indicator	No Shaft Grounding
Shaft Rotation	Reversible
Shaft Slinger Indicator	No Slinger
Speed	1760 rpm 880 rpm
Speed Code	2S-1W-VT
Starting Method	Direct on line
Thermal Device - Bearing	None
Thermal Device - Winding	None
Vibration Sensor Indicator	No Vibration Sensor

Nameplate

NP1256L									
CAT.NO.	M1212T								
SPEC.	39D101W485								
HP	20/5								
VOLTS	460								
AMP	26/11.5								
RPM	1760/880								
FRAME	256T		HZ	60		PH	3		
SER.F.	1.15	CODE	H	DES	B	CLASS	F		
NEMA-NOM-EFF		PF							
RATING	40C AMB-CONT								
CC									
DE	6309		ODE	6208					
ENCL	OPSB	SN							

Accessories

Part number	Description	Multiplier
39-3400	C FACE KIT	A8

AC Induction Motor Performance Data

Record # 12763

Typical performance - not guaranteed values

Winding: 39WGW485-R001		Type: 3936M	Enclosure: OPSB
Nameplate Data		460 V, 60 Hz: High Speed Connection	
Rated Output (HP)	20/5	Full Load Torque	59.8 LB-FT
Volts	460	Start Configuration	direct on line
Full Load Amps	26/11.5	Breakdown Torque	180 LB-FT
R.P.M.	1760/880	Pull-up Torque	80.1 LB-FT
Hz	60 Phase	Locked-rotor Torque	94.4 LB-FT
NEMA Design Code	B KVA Code	Starting Current	162 A
Service Factor (S.F.)	1.15	No-load Current	13.1 A
NEMA Nom. Eff.	0 Power Factor	Line-line Res. @ 25°C	0.635 Ω
Rating - Duty	40C AMB-CONT	Temp. Rise @ Rated Load	64°C
S.F. Amps		Temp. Rise @ S.F. Load	78°C

Load Characteristics 460 V, 60 Hz, 20 HP

% of Rated Load	25	50	75	100	125	150	S.F.
Power Factor	40	62	74	81	84	85	83
Efficiency	83	88.7	89.8	89.6	88.6	88.1	89
Speed	1791	1782	1771	1761	1749	1743	1754
Line amperes	14.3	17.1	21.1	25.9	31.4	34	29.2

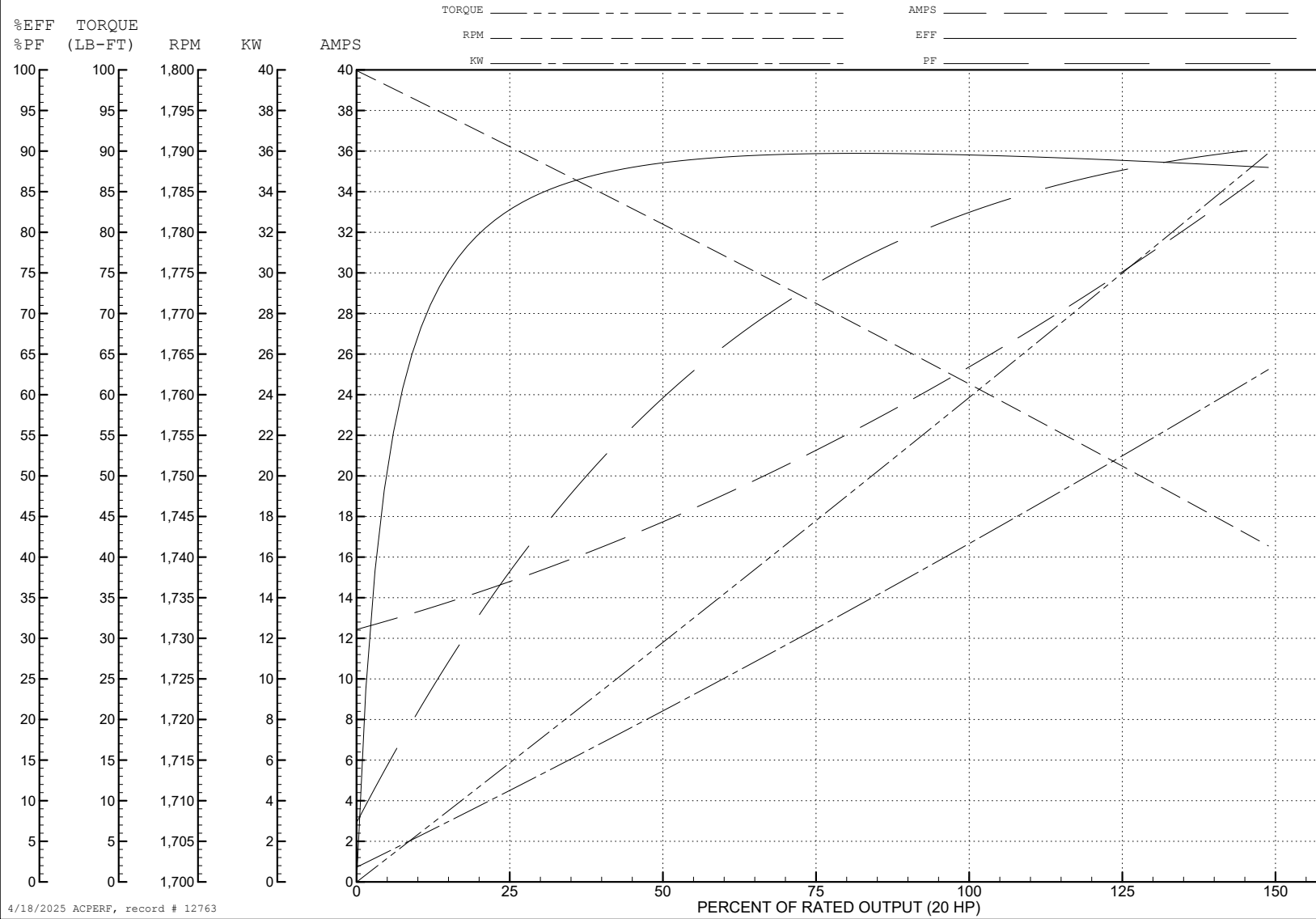
ABB Motors and Mechanical Inc.

WINDING # 39WGW485

Typical performance - not guaranteed values.

20 HP 3 PH 60 HZ 1761 RPM 460 V 3936M

TORQUES (LB-FT): PO=180 PU=80.1 LR=94.4 LRA=162



4/18/2025 ACPERF, record # 12763

AC Induction Motor Performance Data

Record # 12764

Typical performance - not guaranteed values

Winding: 39WGW485-R001		Type: 3936M	Enclosure: OPSB	
Nameplate Data			460 V, 60 Hz: Low Speed Connection	
Rated Output (HP)	20/5	Full Load Torque	29.8 LB-FT	
Volts	460	Start Configuration	direct on line	
Full Load Amps	26/11.5	Breakdown Torque	84.4 LB-FT	
R.P.M.	1760/880	Pull-up Torque	30.3 LB-FT	
Hz	60 Phase	Locked-rotor Torque	36.5 LB-FT	
NEMA Design Code	B KVA Code	Starting Current	38.2 A	
Service Factor (S.F.)	1.15	No-load Current	8.88 A	
NEMA Nom. Eff.	0 Power Factor	Line-line Res. @ 25°C	2.52 Ω	
Rating - Duty	40C AMB-CONT	Temp. Rise @ Rated Load	57°C	
S.F. Amps		Temp. Rise @ S.F. Load	66°C	

Load Characteristics 460 V, 60 Hz, 5 HP

% of Rated Load	25	50	75	100	125	150	S.F.
Power Factor	20	33	43	51	57	60	55
Efficiency	63.2	75.6	79.9	81.2	80.9	80.2	81
Speed	896	890	887	881	873	868	876
Line amperes	9.02	9.5	10.2	11.3	12.6	13.8	12.08

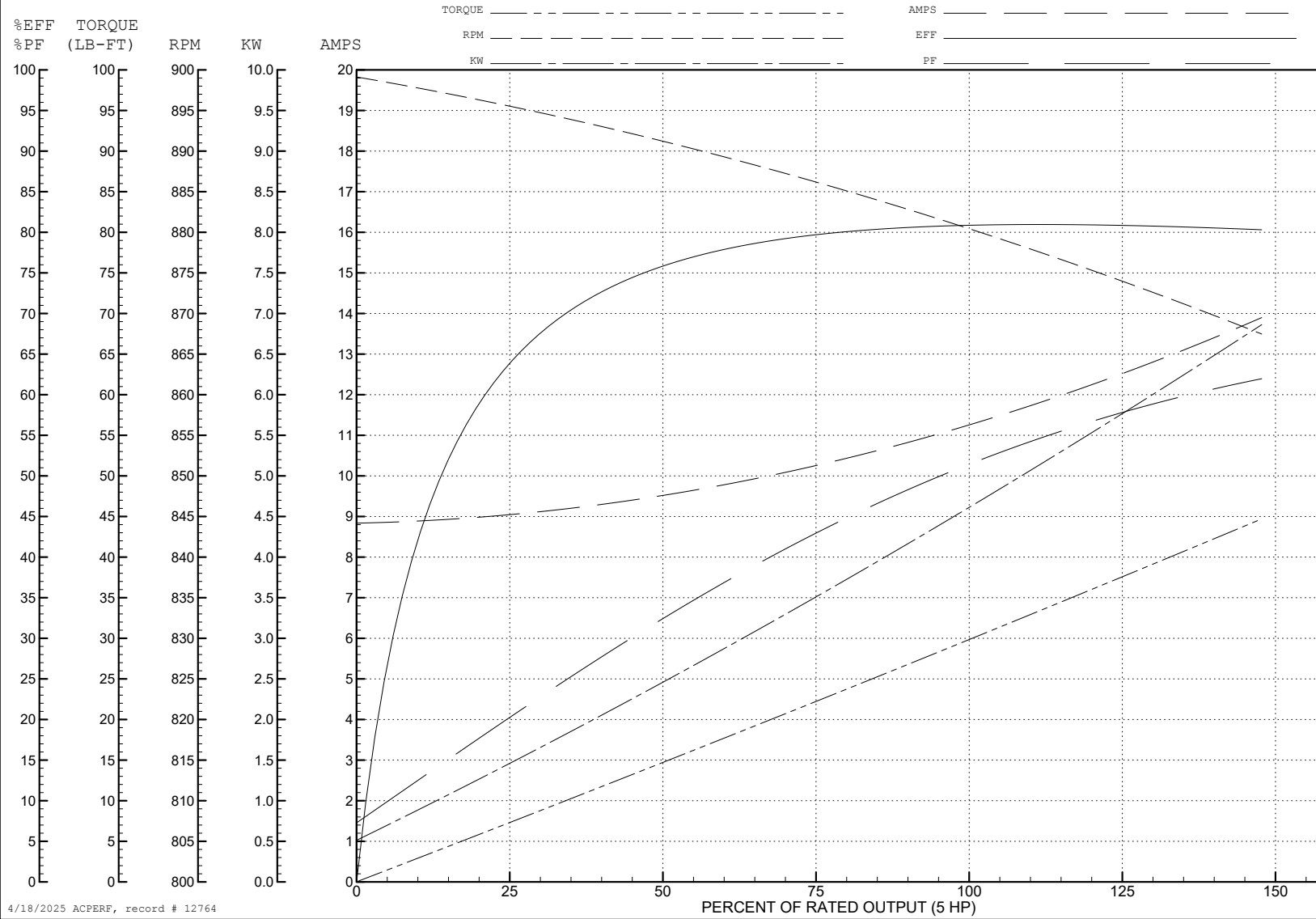
ABB Motors and Mechanical Inc.

WINDING # 39WGW485

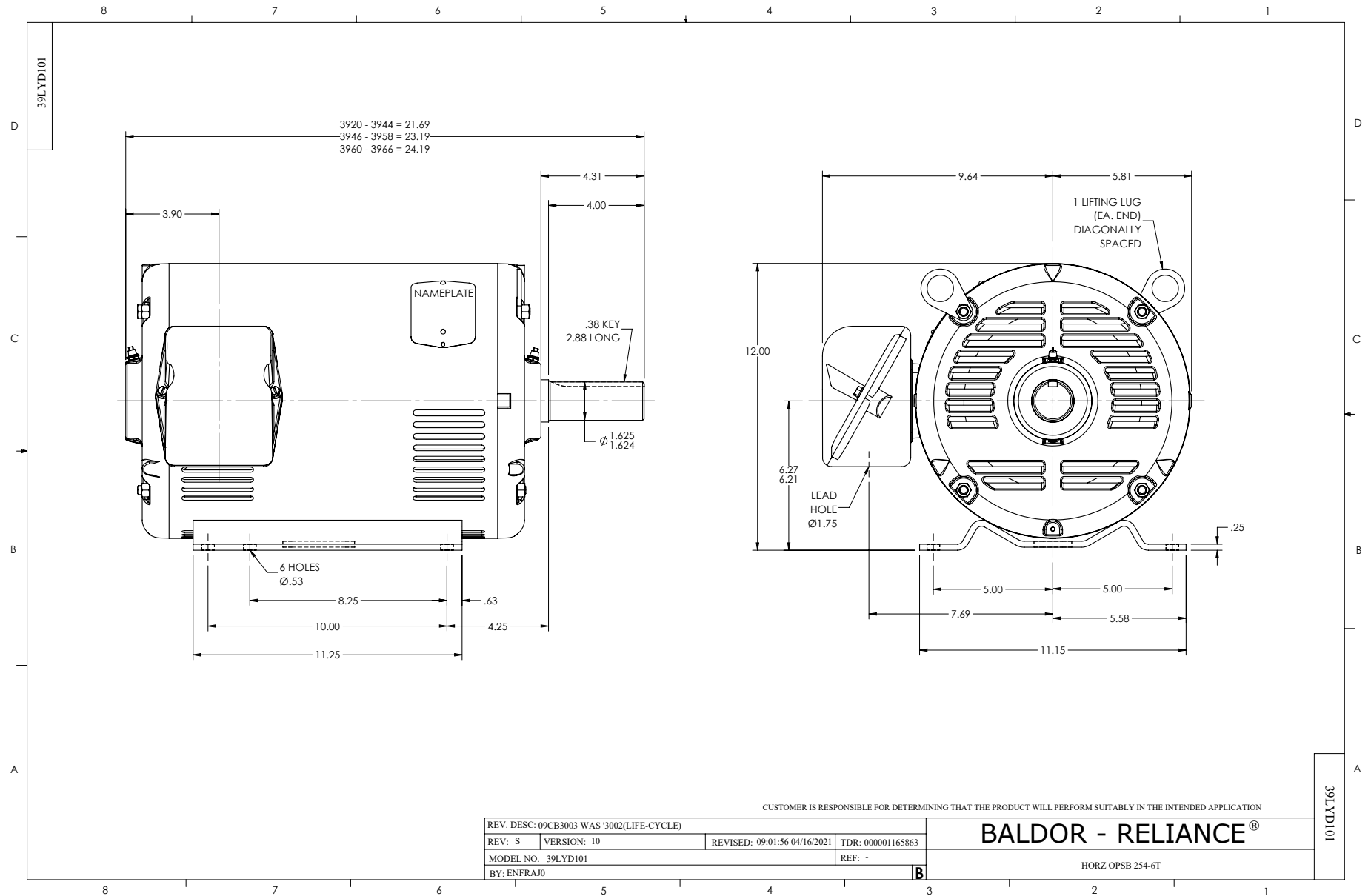
Typical performance - not guaranteed values.

5 HP 3 PH 60 HZ 881 RPM 460 V 3936M

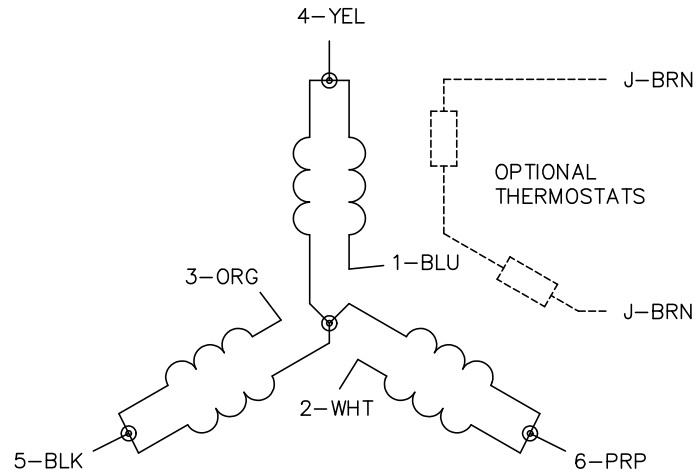
TORQUES (LB-FT): PO=84.4 PU=30.3 LR=36.5 LRA=38.2



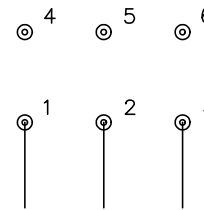
4/18/2025 ACPERF, record # 12764



CD0032

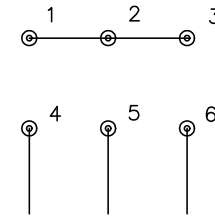


LOW SPEED
(1Y)



LINE

HIGH SPEED
(2Y)



LINE

NOTES:

1. INTERCHANGE ANY TWO LINE LEADS TO REVERSE ROTATION.
2. OPTIONAL THERMOSTATS ARE PROVIDED WHEN SPECIFIED.
3. ACTUAL NUMBER OF INTERNAL PARALLEL CIRCUITS MAY BE A MULTIPLE OF THOSE SHOWN ABOVE.
4. LEAD COLORS ARE OPTIONAL. LEADS MUST ALWAYS BE NUMBERED AS SHOWN.

CD0032

REV. DESC: REVISE TO SHOW OPTIONAL COLORS			
REV. LTR: E	BY: JLP	REVISED: 01/22/99 8:27	TDR: 0171435
CD0032		FILE: AAA00005145	MDL: -
		MTL: -	

BALDOR ELECTRIC Co.

3PH, SV, 6 LEADS, 2-SPEED 1-WINDING VARIABLE TORQUE