

BALDOR • RELIANCE

Customer information packet

M1211T

15/3.8HP, 1770/880RPM, 3PH, 60HZ, 254T, 3936M

Class -

Division - Not Applicable

Specifications

Enclosure	OPSB
Frame	254T
Frame Material	Steel
Frequency	60.00 Hz
Haz Area Division	Not Applicable
Motor Letter Type	Three Phase
Output @ Frequency	15.000 HP @ 60 HZ 3.800 HP @ 60 HZ
Phase	3
Synchronous Speed @ Frequency	1800 RPM @ 60 HZ
Voltage @ Frequency	460.0 V @ 60 HZ
Agency Approvals	UR CSA
Ambient Temperature	40 °C
Auxillary Box	No Auxillary Box
Auxillary Box Lead Termination	None
Base Indicator	Rigid
Bearing Grease Type	Polyrex EM (-20F +300F)
Blower	None
Current @ Voltage	20.000 A @ 460.0 V
Design Code	B
Drip Cover	No Drip Cover
Duty Rating	CONT
Electrically Isolated Bearing	Not Electrically Isolated
Feedback Device	NO FEEDBACK
Front Face Code	Standard
Front Shaft Indicator	None
Heater Indicator	No Heater
High Voltage Full Load Amps	8.7 a
Insulation Class	F
Inverter Code	Not Inverter
KVA Code	H

Part detail

Revision	R
Type	AC
Mech. spec.	39D101
Base	
Status	PRD/A
Elec. spec.	39WGX560
Layout	39LYD101
Eff. date	02-08-2024
CD Diagram	CD0032
Poles	04/08
Leads	6#12
Proprietary	False
Created date	03-14-2007

Lifting Lugs	Standard Lifting Lugs
Locked Bearing Indicator	No Locked Bearing
Motor Lead Exit	Ko Box
Motor Lead Quantity/Wire Size	6 @ 12 AWG
Motor Lead Termination	Flying Leads
Motor Standards	NEMA
Motor Type	3936M
Mounting Arrangement	F1
Number of Poles	4 8
Overall Length	21.69 IN
Product Family	General Purpose
Pulley End Bearing Type	Ball
Pulley Face Code	Standard
Pulley Shaft Indicator	Standard
Rodent Screen	None
Service Factor	1.15
Shaft Diameter	1.625 IN
Shaft Extension Location	Pulley End
Shaft Ground Indicator	No Shaft Grounding
Shaft Rotation	Reversible
Shaft Slinger Indicator	No Slinger
Speed	1770 rpm 880 rpm
Speed Code	2S-1W-VT
Starting Method	Direct on line
Thermal Device - Bearing	None
Thermal Device - Winding	None
Vibration Sensor Indicator	No Vibration Sensor
Winding Thermal 1	None
Winding Thermal 2	None

Nameplate

NP1256L									
CAT.NO.	M1211T								
SPEC.	39D101X560G1								
HP	15/3.8								
VOLTS	460								
AMP	20/8.7								
RPM	1770/880								
FRAME	254T		HZ	60		PH	3		
SER.F.	1.15	CODE	H	DES	B	CLASS	F		
NEMA-NOM-EFF		PF							
RATING	40C AMB-CONT								
CC									
DE	6309		ODE	6208					
ENCL	OPSB	SN							

Accessories

Part number	Description	Multiplier
39-3400	C FACE KIT	A8

AC Induction Motor Performance Data

Record # 23890

Typical performance - not guaranteed values

Winding: 39WGX560-R002		Type: 3936M		Enclosure: OPSB	
Nameplate Data			460 V, 60 Hz: High Speed Connection		
Rated Output (HP)	15/3.8		Full Load Torque	44.8 LB-FT	
Volts	460		Start Configuration	direct on line	
Full Load Amps	20/8.7		Breakdown Torque	152 LB-FT	
R.P.M.	1770/880		Pull-up Torque	58.2 LB-FT	
Hz	60 Phase	3	Locked-rotor Torque	83.3 LB-FT	
NEMA Design Code	B KVA Code	H	Starting Current	128 A	
Service Factor (S.F.)	1.15		No-load Current	9.97 A	
NEMA Nom. Eff.	0 Power Factor	0	Line-line Res. @ 25°C	0.794 Ω	
Rating - Duty	40C AMB-CONT		Temp. Rise @ Rated Load	38°C	
S.F. Amps			Temp. Rise @ S.F. Load	42°C	

Load Characteristics 460 V, 60 Hz, 15 HP

% of Rated Load	25	50	75	100	125	150	S.F.
Power Factor	40	61	72	79	82	83	81
Efficiency	80.2	87.8	90.3	89.8	90.2	89	90
Speed	1791	1785	1778	1771	1763	1754	1766
Line amperes	11	13.2	16.2	20	23.6	28.1	22.2

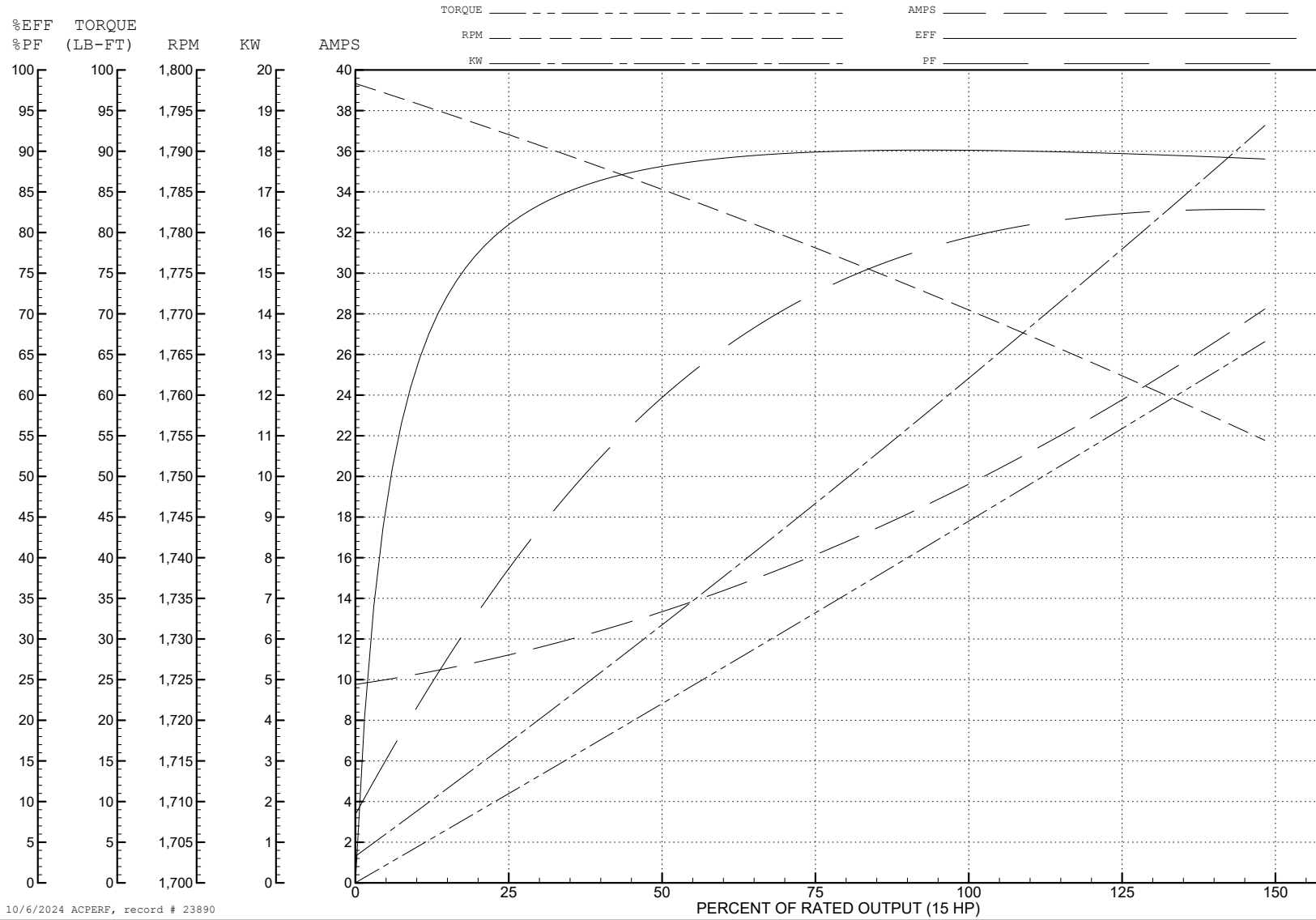
ABB Motors and Mechanical Inc.

WINDING # 39WGX560

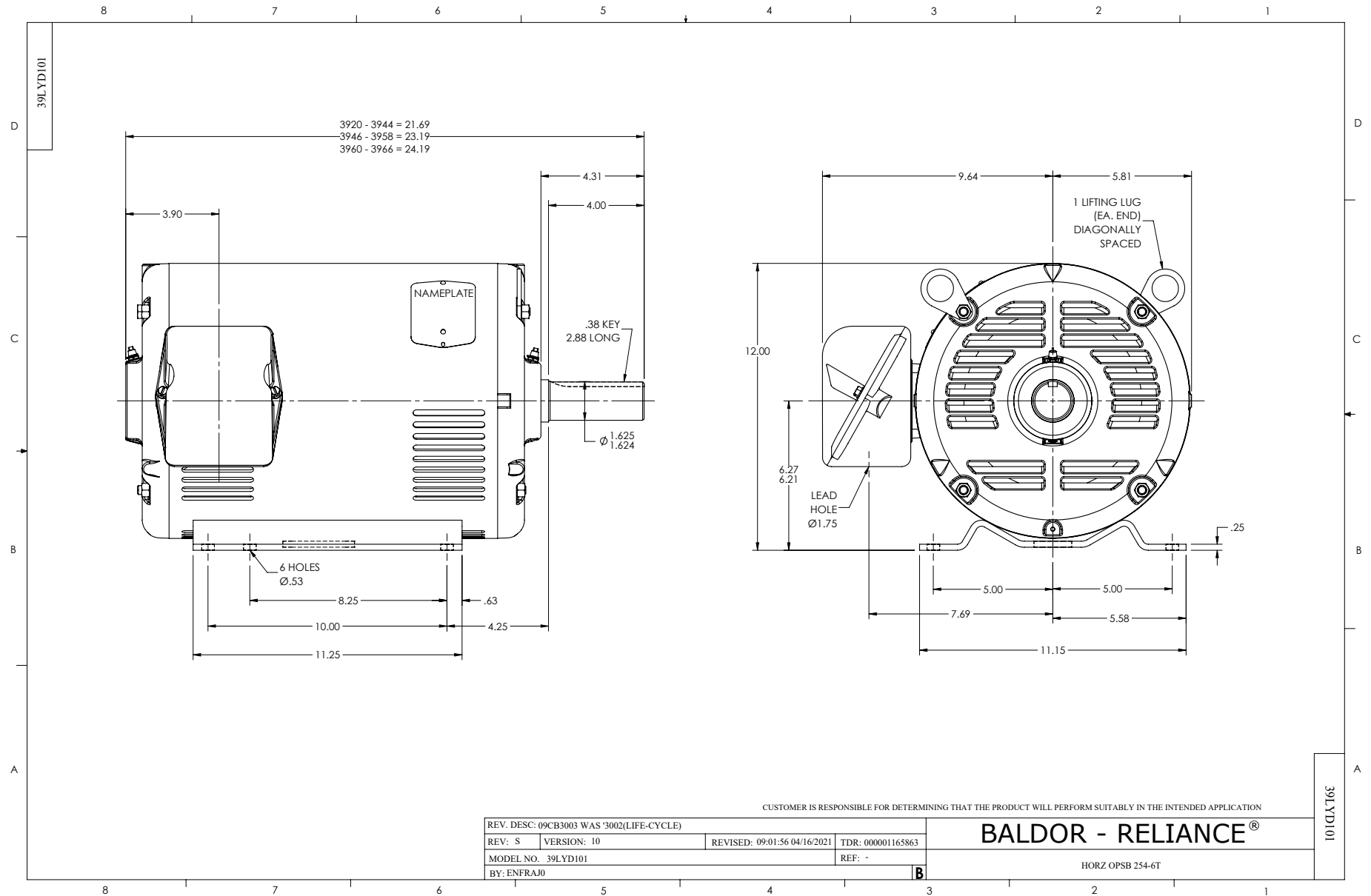
Typical performance - not guaranteed values.

15 HP 3 PH 60 HZ 1771 RPM 460 V 3936M

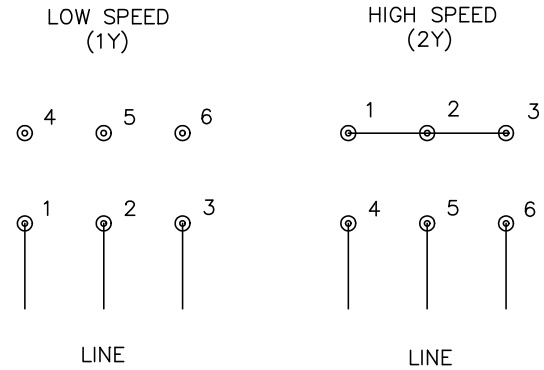
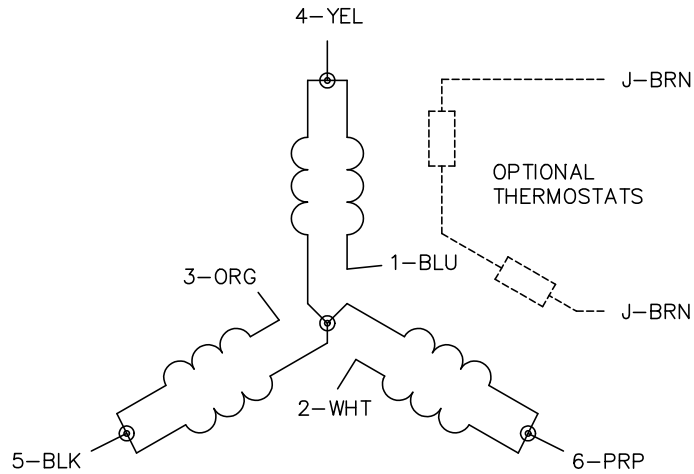
TORQUES (LB-FT): PO=152 PU=58.2 LR=83.3 LRA=128



10/6/2024 ACPERF, record # 23890



CD0032



NOTES:

1. INTERCHANGE ANY TWO LINE LEADS TO REVERSE ROTATION.
2. OPTIONAL THERMOSTATS ARE PROVIDED WHEN SPECIFIED.
3. ACTUAL NUMBER OF INTERNAL PARALLEL CIRCUITS MAY BE A MULTIPLE OF THOSE SHOWN ABOVE.
4. LEAD COLORS ARE OPTIONAL. LEADS MUST ALWAYS BE NUMBERED AS SHOWN.

CD0032

REV. DESC: REVISE TO SHOW OPTIONAL COLORS			
REV. LTR: E	BY: JLP	REVISED: 01/22/99 8:27	TDR: 0171435
CD0032		FILE: AAA00005145	MDL: -
		MTL: -	

BALDOR ELECTRIC Co.

3PH, SV, 6 LEADS, 2-SPEED 1-WINDING VARIABLE TORQUE