

ABB BALDOR RELIANCE III



Customer information packet

M1208T

5/1.3HP, 1725/850RPM, 3PH, 60HZ, 184T, 3634M

Class - None

Division - Not Applicable

Specifications

Enclosure	OPEN
Frame	184T
Frame Material	Steel
Frequency	60.00 Hz
Haz Area Class and Group	None
Haz Area Division	Not Applicable
Motor Letter Type	Three Phase
Output @ Frequency	5.000 HP @ 60 HZ 1.300 HP @ 60 HZ
Phase	3
Synchronous Speed @ Frequency	1800 RPM @ 60 HZ
Voltage @ Frequency	460.0 V @ 60 HZ
Agency Approvals	UR CSA
Ambient Temperature	40 °C
Auxiliary Box	NO AUXILLARY BOX
Auxiliary Box Lead Termination	None
Base Indicator	Rigid
Bearing Grease Type	Polyrex EM (-20F +300F)
Blower	None
Current @ Voltage	6.600 A @ 460.0 V
Design Code	B
Drip Cover	No Drip Cover
Duty Rating	CONT
Electrically Isolated Bearing	Not Electrically Isolated
Feedback Device	NO FEEDBACK
Front Face Code	Standard
Front Shaft Indicator	None
Heater Indicator	No Heater
High Voltage Full Load Amps	2.5 a
Insulation Class	F
Inverter Code	Not Inverter

Part Detail

Revision	Z
Type	AC
Mech. spec.	36B001
Base	
Status	PRD/A
Elec. spec.	36WGW582
Layout	36LYB001
Eff. date	10-30-2025
CD Diagram	CD0032
Poles	04/08
Leads	6#16
Proprietary	False
Created date	01-01-0001

KVA Code	J
Lifting Lugs	No Lifting Lugs
Locked Bearing Indicator	No Locked Bearing
Motor Lead Exit	Ko Box
Motor Lead Quantity/Wire Size	6 @ 16 AWG
Motor Lead Termination	Flying Leads
Motor Standards	NEMA
Motor Type	3634M
Mounting Arrangement	F1
Number of Poles	4 8
Overall Length	15.00 IN
Product Family	General Purpose
Pulley End Bearing Type	Ball
Pulley Face Code	Standard
Pulley Shaft Indicator	Standard
Rodent Screen	None
Service Factor	1.00
Shaft Diameter	1.125 IN
Shaft Extension Location	Pulley End
Shaft Ground Indicator	No Shaft Grounding
Shaft Rotation	Reversible
Shaft Slinger Indicator	No Slinger
Speed	1725 rpm 850 rpm
Speed Code	2S-1W-VT
Starting Method	Direct on line
Thermal Device - Bearing	None
Thermal Device - Winding	None
Vibration Sensor Indicator	No Vibration Sensor
Winding Thermal 1	None
Winding Thermal 2	None

Nameplate

NP1256L										
CAT.NO.	M1208T									
SPEC.	36B01W582									
HP	5/1.3									
VOLTS	460									
AMP	6.6/2.5									
RPM	1725/850									
FRAME	184T		HZ	60		PH	3			
SER.F.	1.15	CODE	J	DES	B	CLASS	F			
NEMA-NOM-EFF		PF								
RATING	40C AMB-CONT									
CC										
DE	6206		ODE	6205						
ENCL	OPEN	SN								

Accessories

Part number	Description	Multiplier
36-3403	C FACE KIT	A8
36EP1405A09SP	D-FLANGE KIT	A8

ABB Motors and Mechanical Inc.

WINDING # 36GW582

Typical performance - not guaranteed values.

5 HP 3 PH 60 HZ 1720 RPM 460 V 3634M

TORQUES (LB-FT): PO=50 PU=31 LR=34 LRA=48

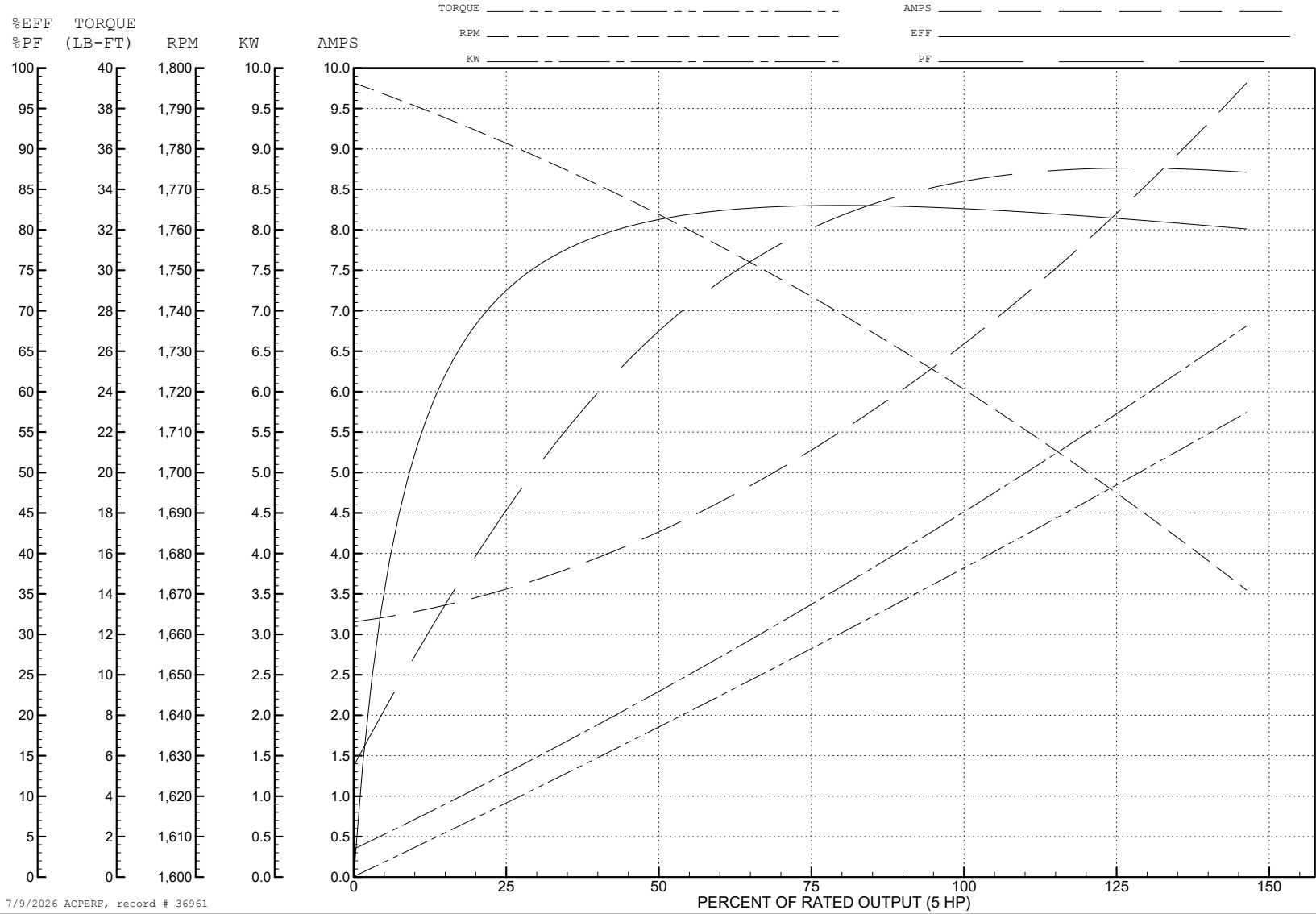


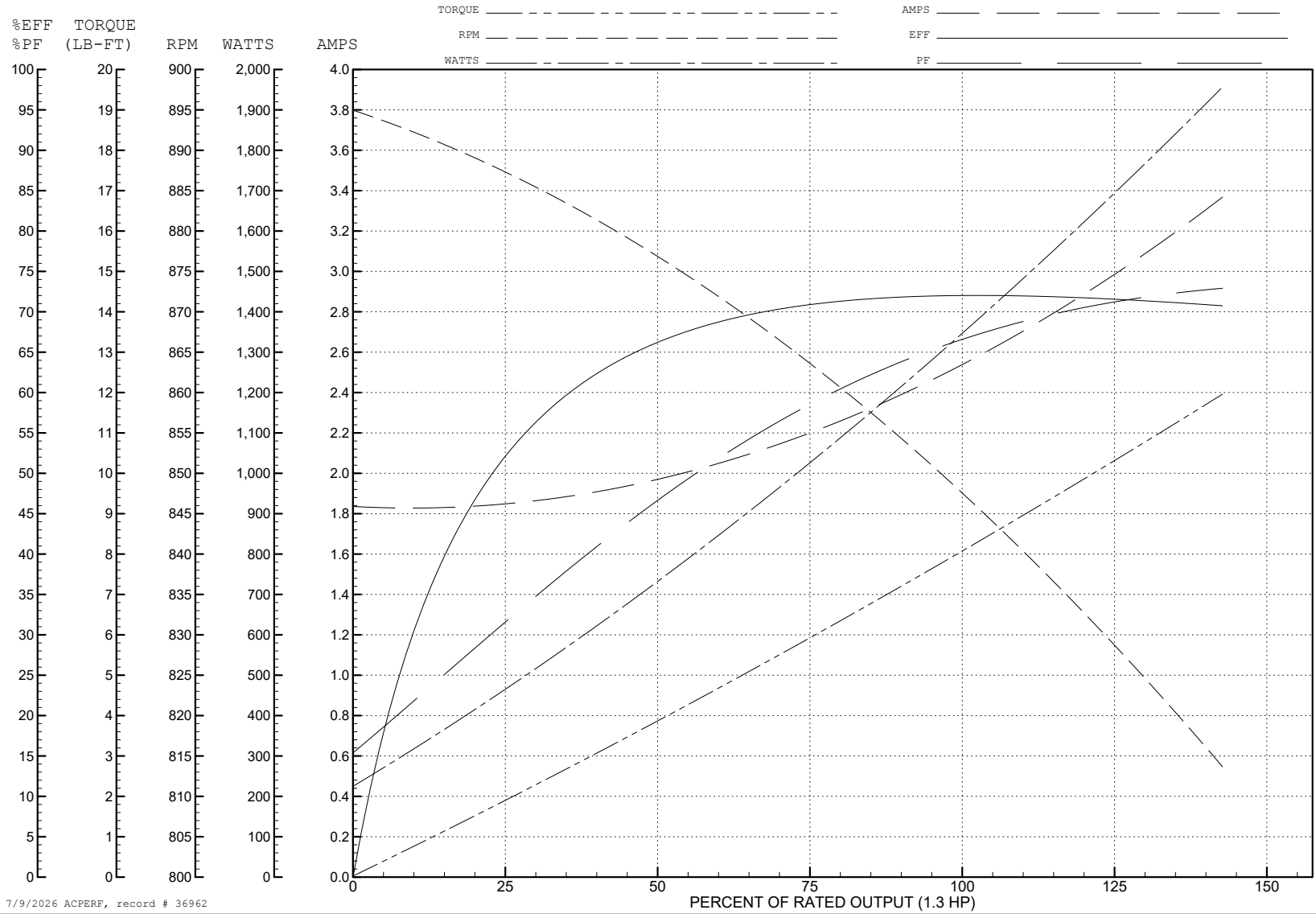
ABB Motors and Mechanical Inc.

WINDING # 36WG582

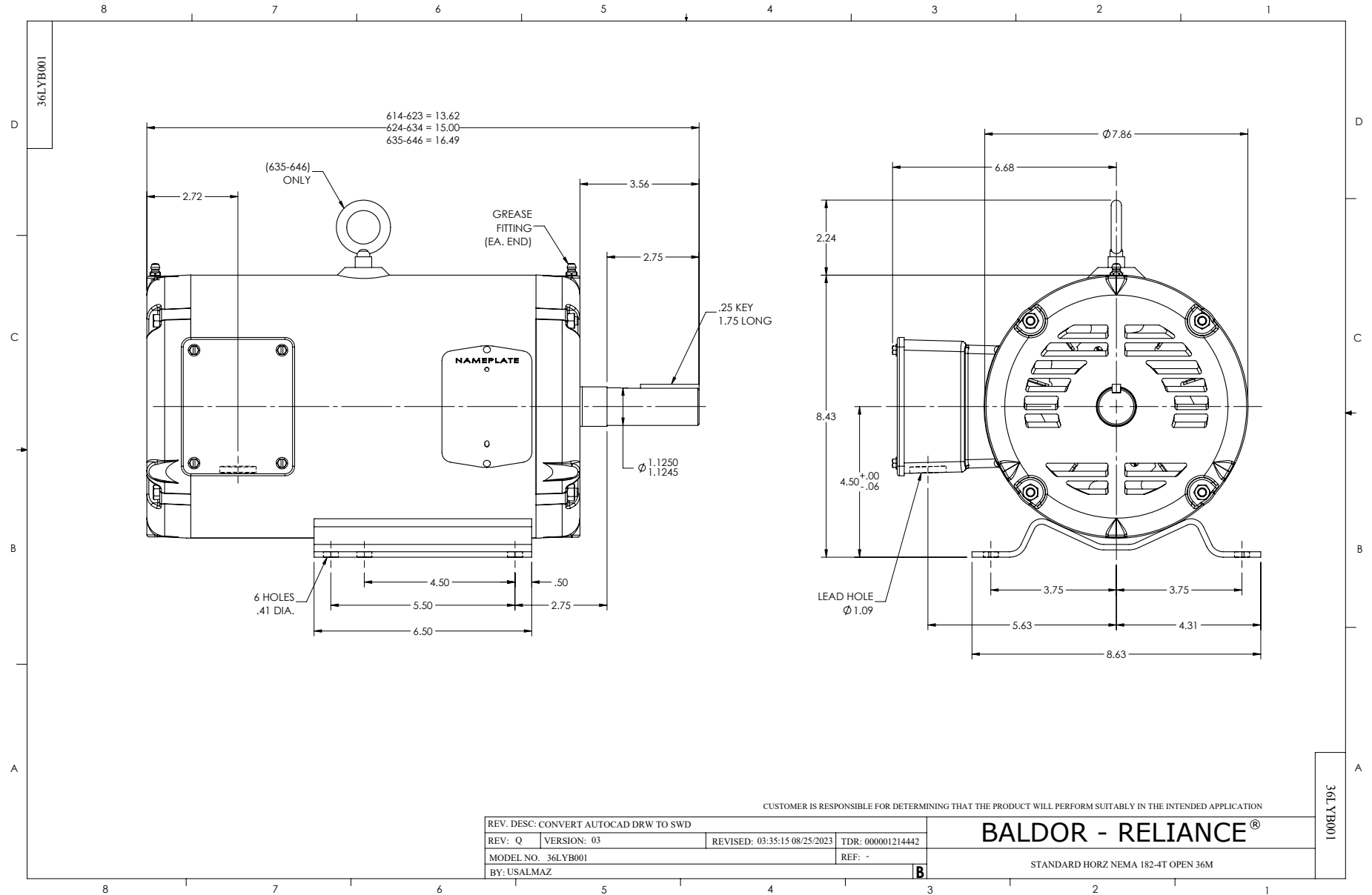
1.3 HP 3 PH 60 HZ 849 RPM 460 V 3634M

Typical performance - not guaranteed values.

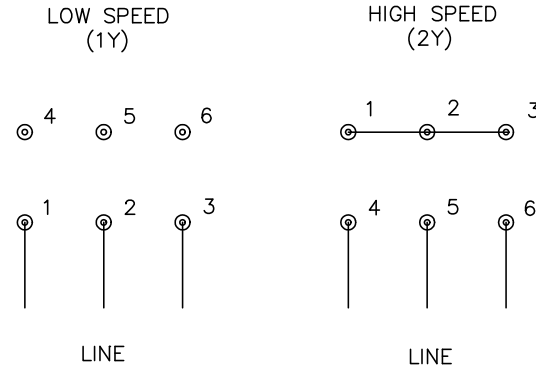
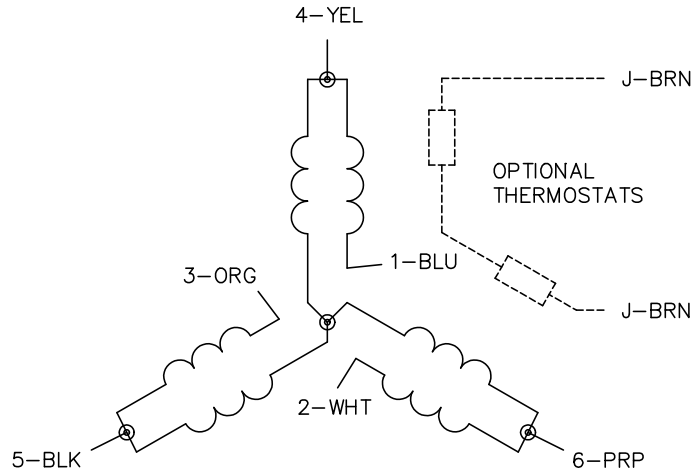
TORQUES (LB-FT): PO=19 PU=10 LR=11.5 LRA=9.6



7/9/2026 ACPERF, record # 36962



CD0032



NOTES:

1. INTERCHANGE ANY TWO LINE LEADS TO REVERSE ROTATION.
2. OPTIONAL THERMOSTATS ARE PROVIDED WHEN SPECIFIED.
3. ACTUAL NUMBER OF INTERNAL PARALLEL CIRCUITS MAY BE A MULTIPLE OF THOSE SHOWN ABOVE.
4. LEAD COLORS ARE OPTIONAL. LEADS MUST ALWAYS BE NUMBERED AS SHOWN.

CD0032

REV. DESC: REVISE TO SHOW OPTIONAL COLORS			
REV. LTR: E	BY: JLP	REVISED: 01/22/99 8:27	TDR: 0171435
CD0032		FILE: AAA00005145	MDL: -
		MTL: -	

BALDOR ELECTRIC Co.

3PH, SV, 6 LEADS, 2-SPEED 1-WINDING VARIABLE TORQUE