

BALDOR • RELIANCE

Customer information packet

M1206T

2/.5HP, 1730/865RPM, 3PH, 60HZ, 145T, 3528M, O

Class - None

Division - Not Applicable

Specifications

Enclosure	OPEN
Frame	145T
Frame Material	Steel
Frequency	60.00 Hz
Haz Area Class and Group	None
Haz Area Division	Not Applicable
Motor Letter Type	Three Phase
Output @ Frequency	2.000 HP @ 60 HZ .500 HP @ 60 HZ
Phase	3
Synchronous Speed @ Frequency	1800 RPM @ 60 HZ
Voltage @ Frequency	460.0 V @ 60 HZ
Agency Approvals	UR CSA
Ambient Temperature	40 °C
Auxillary Box	No Auxillary Box
Auxillary Box Lead Termination	None
Base Indicator	Rigid
Bearing Grease Type	Polyrex EM (-20F +300F)
Blower	None
Current @ Voltage	3.240 A @ 460.0 V
Design Code	B
Drip Cover	No Drip Cover
Duty Rating	CONT
Electrically Isolated Bearing	Not Electrically Isolated
Feedback Device	NO FEEDBACK
Front Shaft Indicator	None
Heater Indicator	No Heater
High Voltage Full Load Amps	1.4 a
Insulation Class	F
Inverter Code	Not Inverter
KVA Code	K

Part detail

Revision	C
Type	AC
Mech. spec.	35BB001
Base	
Status	PRD/A
Elec. spec.	35WGG363
Layout	35LYBB001
Eff. date	07-02-2024
CD Diagram	CD0032
Poles	04/08
Leads	6#18
Proprietary	False
Created date	02-23-2023

Lifting Lugs	No Lifting Lugs
Locked Bearing Indicator	No Locked Bearing
Motor Lead Quantity/Wire Size	6 @ 18 AWG
Motor Lead Termination	Flying Leads
Motor Standards	NEMA
Motor Type	3528M
Mounting Arrangement	F1
Number of Poles	4 8
Overall Length	12.13 IN
Product Family	General Purpose
Pulley End Bearing Type	Ball
Pulley Face Code	Standard
Pulley Shaft Indicator	Standard
Rodent Screen	None
Service Factor	1.15
Shaft Diameter	0.875 IN
Shaft Ground Indicator	No Shaft Grounding
Shaft Rotation	Reversible
Shaft Slinger Indicator	No Slinger
Speed	1730 rpm 865 rpm
Speed Code	2S-1W-VT
Starting Method	Direct on line
Thermal Device - Bearing	None
Thermal Device - Winding	None
Vibration Sensor Indicator	No Vibration Sensor
Winding Thermal 1	None
Winding Thermal 2	None

Nameplate

NP1256L									
CAT.NO.	M1206T								
SPEC.	35BB001G363G1								
HP	2/.5								
VOLTS	460								
AMP	3.24/1.37								
RPM	1730/865								
FRAME	145T		HZ	60		PH	3		
SER.F.	1.15	CODE	K	DES	B	CLASS	F		
NEMA-NOM-EFF		PF							
RATING	40C AMB-CONT								
CC									
DE	6205		ODE	6203					
ENCL	OPEN	SN							
	SFA 3.52								

Accessories

Part number	Description	Multiplier
35-8764	C FACE KIT	A8
35EP1604A01SP	D-FLANGE KIT	A8

AC Induction Motor Performance Data

Record # 87876

Typical performance - not guaranteed values

Winding: 35WGG363-R001		Type: 3528M	Enclosure: OPEN
Nameplate Data			460 V, 60 Hz: High Speed Connection
Rated Output (HP)	2/.5	Full Load Torque	6.01 LB-FT
Volts	460	Start Configuration	direct on line
Full Load Amps	3.24/1.37	Breakdown Torque	22.61 LB-FT
R.P.M.	1730/865	Pull-up Torque	17.11 LB-FT
Hz	60 Phase	Locked-rotor Torque	18.33 LB-FT
NEMA Design Code	B KVA Code	Starting Current	21.04 A
Service Factor (S.F.)	1.15	No-load Current	2.06 A
NEMA Nom. Eff.	0 Power Factor	Line-line Res. @ 25°C	12 Ω
Rating - Duty	40C AMB-CONT	Temp. Rise @ Rated Load	48°C
S.F. Amps		Temp. Rise @ S.F. Load	57°C
		Locked-rotor Power Factor	81.9
		Rotor inertia	0.202 lb-ft ²

Load Characteristics 460 V, 60 Hz, 2 HP

% of Rated Load	25	50	75	100	125	150	S.F.
Power Factor	30	49	64	70	76	82	74
Efficiency	72.2	81.1	82.9	82	80.8	79	81.3
Speed	1753	1768	1750	1730	1711	1692	1719
Line amperes	2.14	2.41	2.67	3.24	3.71	4.19	3.52

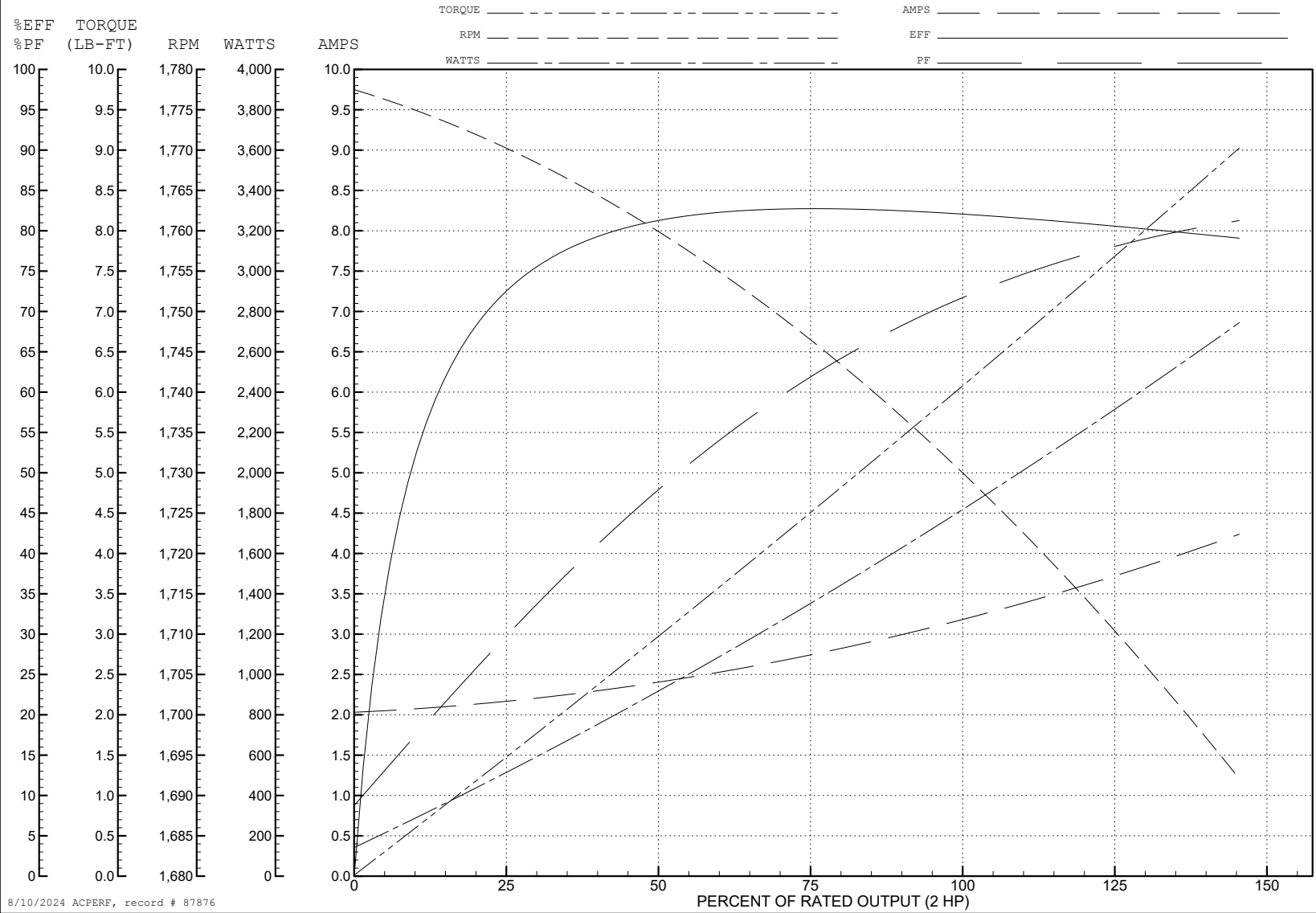
ABB Motors and Mechanical Inc.

WINDING # 35WGG363

Typical performance - not guaranteed values.

2 HP 3 PH 60 HZ 1730 RPM 460 V 3528M

TORQUES (LB-FT): PO=22.61 PU=17.11 LR=18.33 LRA=21.04



8/10/2024 ACPERF, record # 87876

AC Induction Motor Performance Data

Record # 87877

Typical performance - not guaranteed values

Winding: 35WGG363-R001		Type: 3528M	Enclosure: OPEN	
Nameplate Data			460 V, 60 Hz: Low Speed Connection	
Rated Output (HP)	2/.5	Full Load Torque	3.02 LB-FT	
Volts	460	Start Configuration	direct on line	
Full Load Amps	3.24/1.37	Breakdown Torque	10.7 LB-FT	
R.P.M.	1730/865	Pull-up Torque	5.97 LB-FT	
Hz	60 Phase	Locked-rotor Torque	7.67 LB-FT	
NEMA Design Code	B KVA Code	Starting Current	5.21 A	
Service Factor (S.F.)	1.15	No-load Current	1.24 A	
NEMA Nom. Eff.	0 Power Factor	Line-line Res. @ 25°C	47.9 Ω	
Rating - Duty	40C AMB-CONT	Temp. Rise @ Rated Load		
		Locked-rotor Power Factor	81.9	
		Rotor inertia	0.202 lb-ft ²	

Load Characteristics 460 V, 60 Hz, 0.5 HP

% of Rated Load	25	50	75	100	125	150	S.F.
Power Factor	24	34	43	52	59	66	56
Efficiency	39.5	55.5	63.4	67.5	69.4	69.9	68.6
Speed	892.2	885.3	877.8	869.6	860.6	850.5	864
Line amperes	1.23	1.25	1.29	1.34	1.42	1.53	1.39

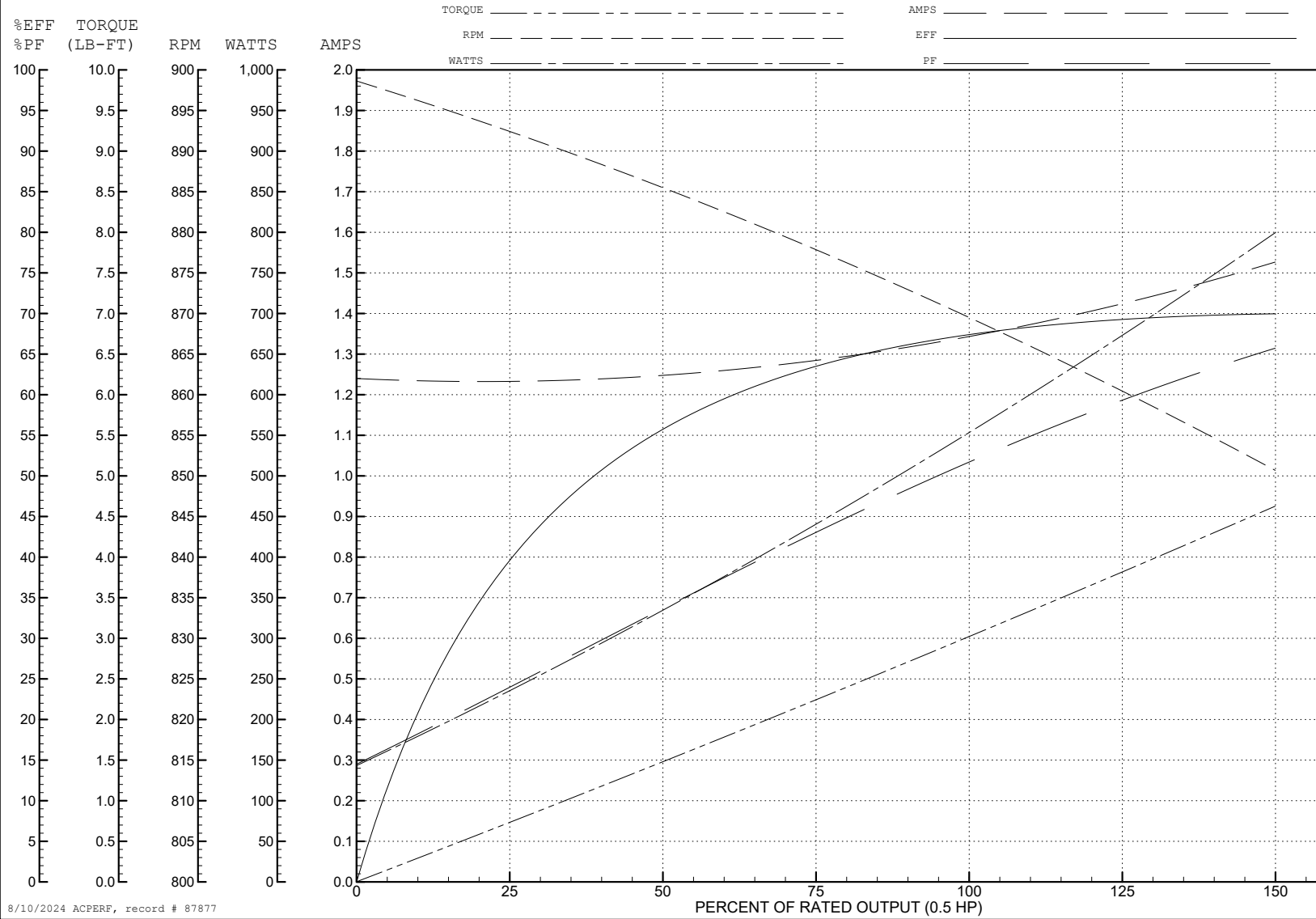
ABB Motors and Mechanical Inc.

WINDING # 35WGG363

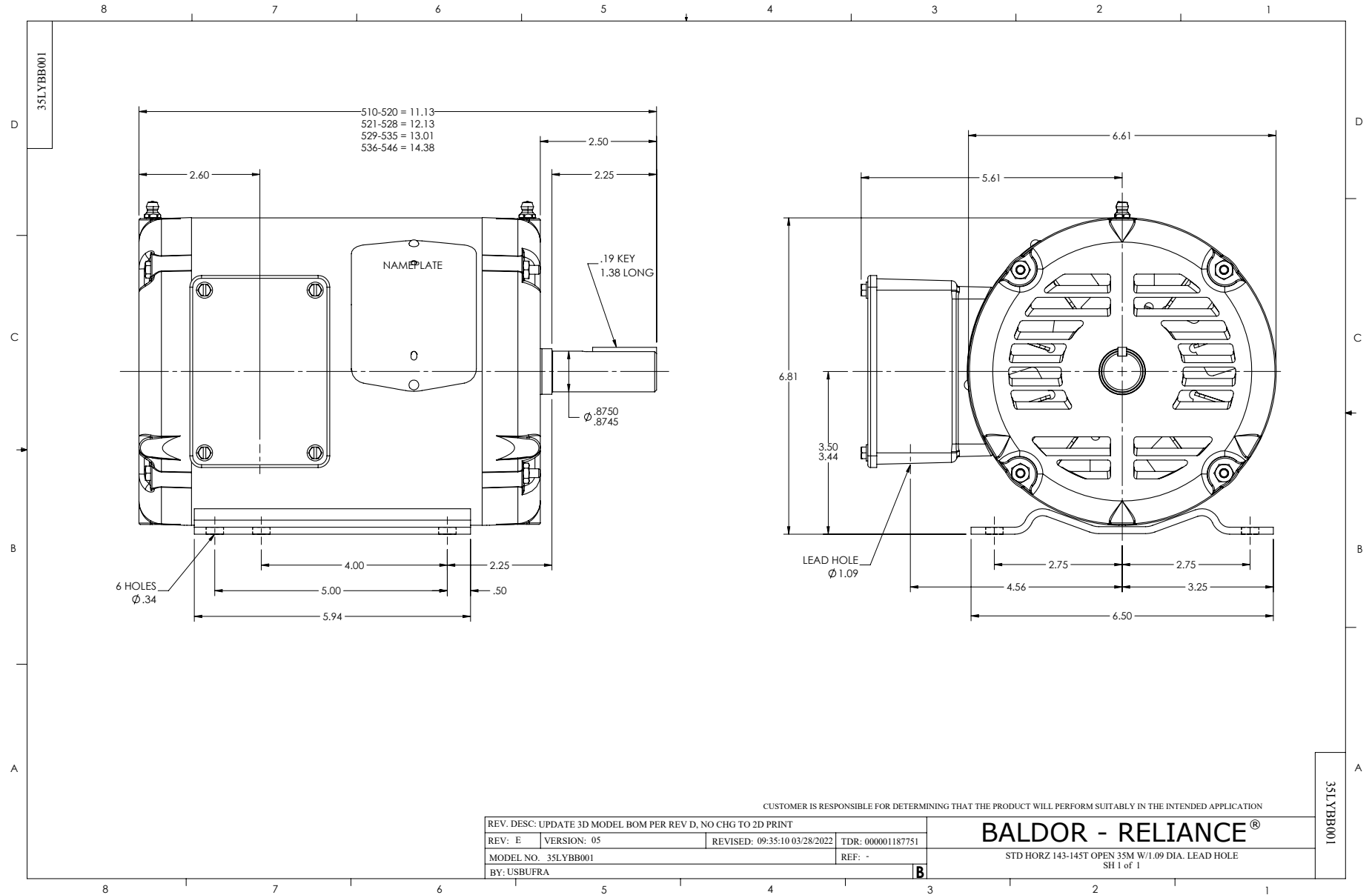
0.5 HP 3 PH 60 HZ 869.6 RPM 460 V 3528M

Typical performance - not guaranteed values.

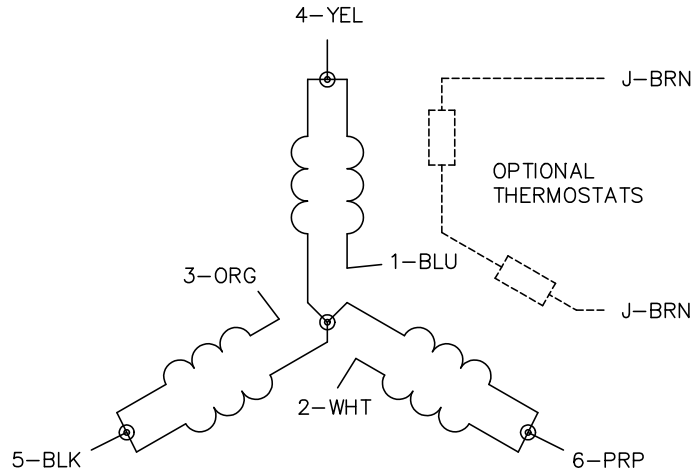
TORQUES (LB-FT): PO=10.7 PU=5.97 LR=7.67 LRA=5.21



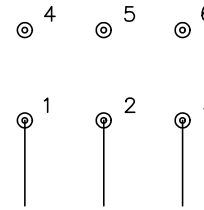
8/10/2024 ACPERF, record # 87877



CD0032

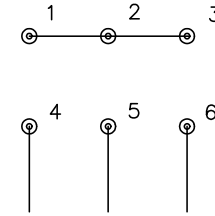


LOW SPEED
(1Y)



LINE

HIGH SPEED
(2Y)



LINE

NOTES:

1. INTERCHANGE ANY TWO LINE LEADS TO REVERSE ROTATION.
2. OPTIONAL THERMOSTATS ARE PROVIDED WHEN SPECIFIED.
3. ACTUAL NUMBER OF INTERNAL PARALLEL CIRCUITS MAY BE A MULTIPLE OF THOSE SHOWN ABOVE.
4. LEAD COLORS ARE OPTIONAL. LEADS MUST ALWAYS BE NUMBERED AS SHOWN.

CD0032

REV. DESC: REVISE TO SHOW OPTIONAL COLORS			
REV. LTR: E	BY: JLP	REVISED: 01/22/99 8:27	TDR: 0171435
CD0032		FILE: AAA00005145	MDL: -
		MTL: -	

BALDOR ELECTRIC Co.

3PH, SV, 6 LEADS, 2-SPEED 1-WINDING VARIABLE TORQUE