

ABB BALDOR RELIANCE III

Customer information packet

M1204T

1/.25HP, 1720/860RPM, 3PH, 60HZ, 143T, 3520M

Class - None

Division - Not Applicable

Specifications

Enclosure	OPEN
Frame	143T
Frame Material	Steel
Frequency	60.00 Hz
Haz Area Class and Group	None
Haz Area Division	Not Applicable
Motor Letter Type	Three Phase
Output @ Frequency	1.000 HP @ 60 HZ .250 HP @ 60 HZ
Phase	3
Synchronous Speed @ Frequency	1800 RPM @ 60 HZ
Voltage @ Frequency	460.0 V @ 60 HZ
Agency Approvals	UR CSA
Ambient Temperature	40 °C
Auxiliary Box	NO AUXILLARY BOX
Auxiliary Box Lead Termination	None
Base Indicator	Rigid
Bearing Grease Type	Polyrex EM (-20F +300F)
Blower	None
Current @ Voltage	1.520 A @ 460.0 V
Design Code	-
Drip Cover	No Drip Cover
Duty Rating	CONT
Electrically Isolated Bearing	Not Electrically Isolated
Feedback Device	NO FEEDBACK
Front Shaft Indicator	None
Heater Indicator	No Heater
High Voltage Full Load Amps	0.8 a
Insulation Class	F
Inverter Code	Not Inverter
KVA Code	J

Part Detail

Revision	C
Type	AC
Mech. spec.	35BB001
Base	
Status	PRD/A
Elec. spec.	35WGG361
Layout	35LYBB001
Eff. date	07-02-2024
CD Diagram	CD0032
Poles	04/08
Leads	6#18
Proprietary	False
Created date	02-23-2023

Lifting Lugs	No Lifting Lugs
Locked Bearing Indicator	No Locked Bearing
Motor Lead Quantity/Wire Size	6 @ 18 AWG
Motor Lead Termination	Flying Leads
Motor Standards	NEMA
Motor Type	3520M
Mounting Arrangement	F1
Number of Poles	4 8
Overall Length	11.13 IN
Product Family	General Purpose
Pulley End Bearing Type	Ball
Pulley Face Code	Standard
Pulley Shaft Indicator	Standard
Rodent Screen	None
Service Factor	1.15
Shaft Diameter	0.875 IN
Shaft Ground Indicator	No Shaft Grounding
Shaft Rotation	Reversible
Shaft Slinger Indicator	No Slinger
Speed	1720 rpm 860 rpm
Speed Code	2S-1W-VT
Starting Method	Direct on line
Thermal Device - Bearing	None
Thermal Device - Winding	None
Vibration Sensor Indicator	No Vibration Sensor
Winding Thermal 1	None
Winding Thermal 2	None

Nameplate

NP1256L										
CAT.NO.	M1204T									
SPEC.	35BB001G361									
HP	1/.25									
VOLTS	460									
AMP	1.52/.77									
RPM	1720/860									
FRAME	143T		HZ	60		PH	3			
SER.F.	1.15	CODE	J	DES	-	CLASS	F			
NEMA-NOM-EFF		PF								
RATING	40C AMB-CONT									
CC										
DE	6205		ODE	6203						
ENCL	OPEN	SN								
	SFA 1.75									

Accessories

Part number	Description	Multiplier
35-8764	C FACE KIT	A8
35EP1604A01SP	D-FLANGE KIT	

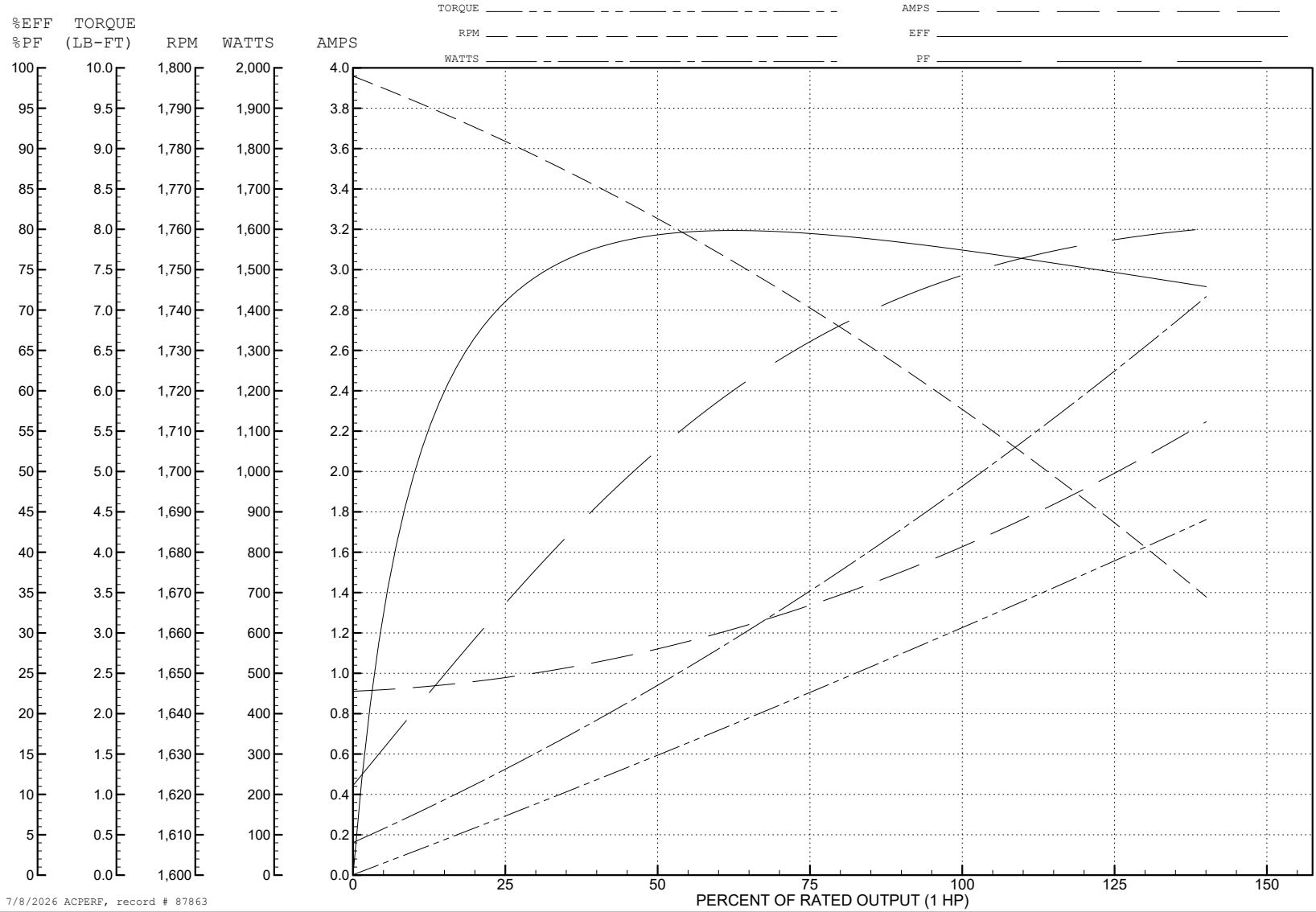
ABB Motors and Mechanical Inc.

WINDING # 35WGG361

Typical performance - not guaranteed values.

1 HP 3 PH 60 HZ 1719 RPM 460 V 3520M

TORQUES (LB-FT): PO=9.37 PU=7.48 LR=7.98 LRA=9.28



7/8/2026 ACPERF, record # 87863

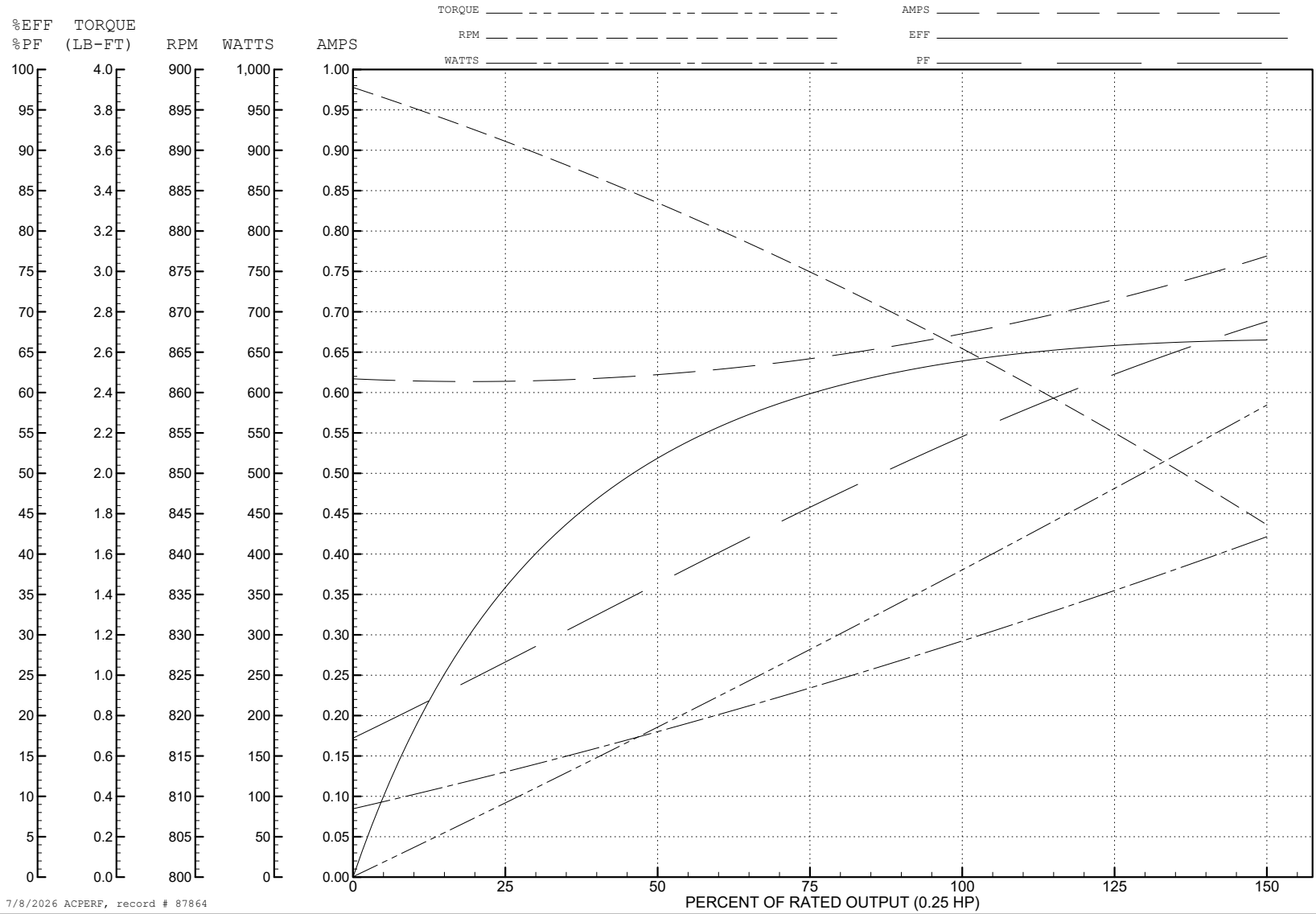
ABB Motors and Mechanical Inc.

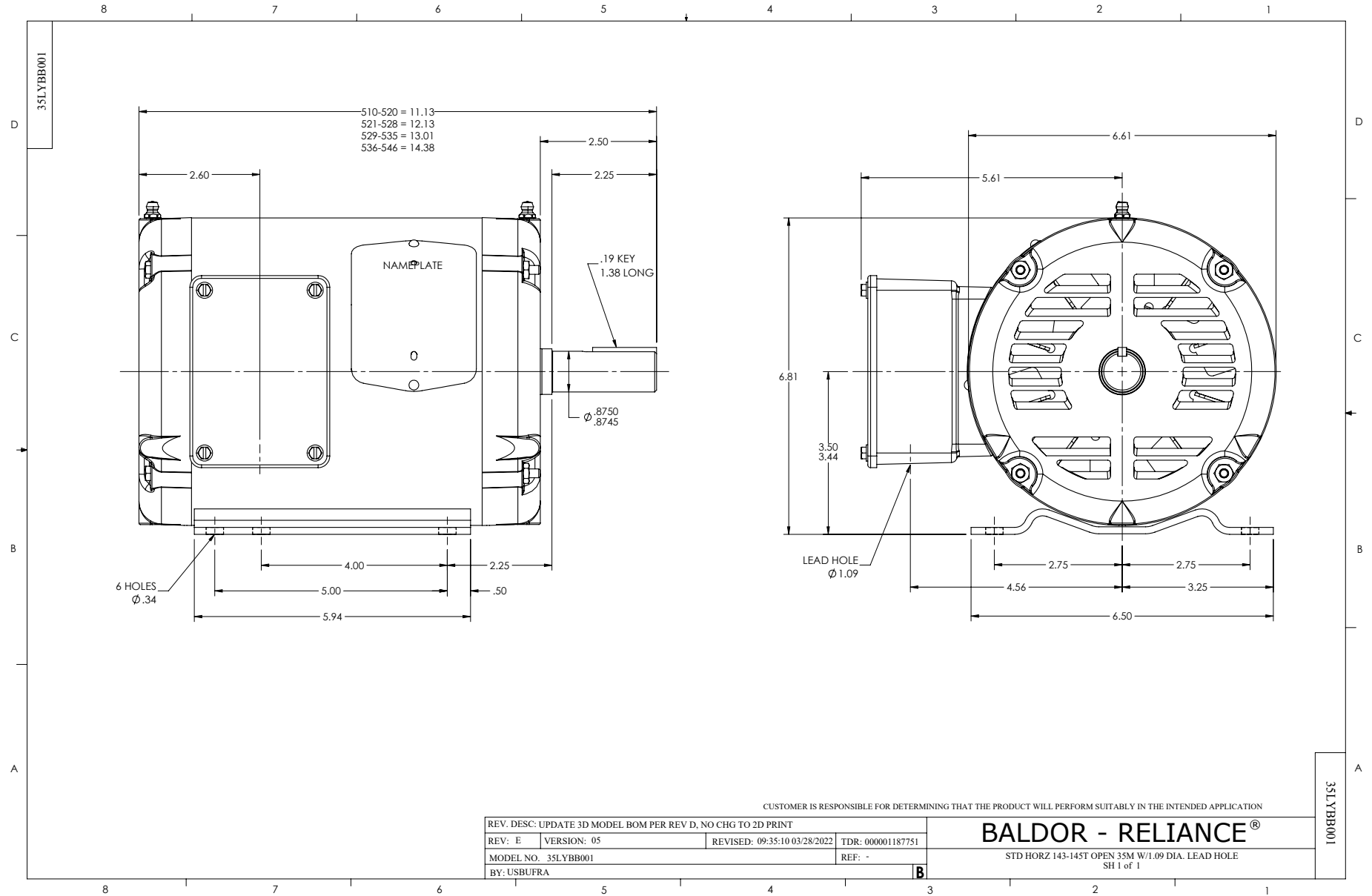
WINDING # 35WGG361

0.25 HP 3 PH 60 HZ 865.7 RPM 460 V 3520M

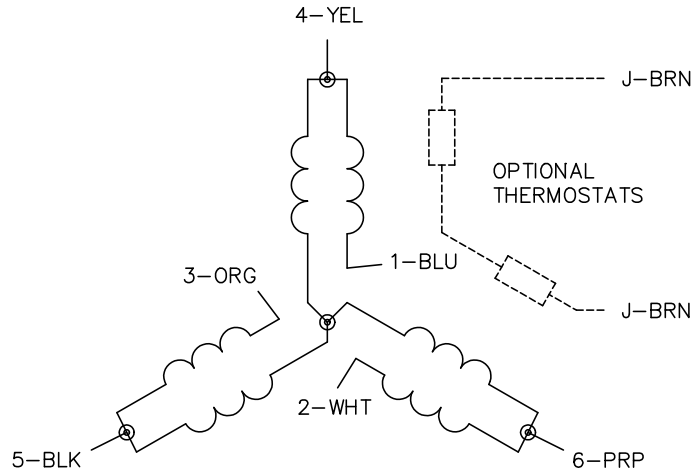
Typical performance - not guaranteed values.

TORQUES (LB-FT): PO=4.87 PU=2.55 LR=3.56 LRA=2.44

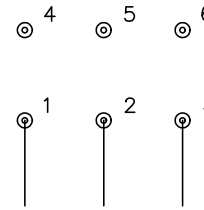




CD0032

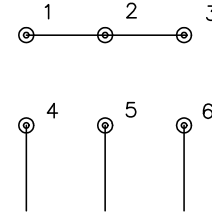


LOW SPEED
(1Y)



LINE

HIGH SPEED
(2Y)



LINE

NOTES:

1. INTERCHANGE ANY TWO LINE LEADS TO REVERSE ROTATION.
2. OPTIONAL THERMOSTATS ARE PROVIDED WHEN SPECIFIED.
3. ACTUAL NUMBER OF INTERNAL PARALLEL CIRCUITS MAY BE A MULTIPLE OF THOSE SHOWN ABOVE.
4. LEAD COLORS ARE OPTIONAL. LEADS MUST ALWAYS BE NUMBERED AS SHOWN.

CD0032

REV. DESC: REVISE TO SHOW OPTIONAL COLORS

REV. LTR: E

BY: JLP

REVISED: 01/22/99 8:27

TDR: 0171435

CD0032

FILE: AAA00005145

MDL: -

MTL: -

BALDOR ELECTRIC Co.

3PH, SV, 6 LEADS, 2-SPEED 1-WINDING VARIABLE TORQUE