

ABB BALDOR RELIANCE III

Customer information packet

M1023T

3/1.3HP, 1725/1140RPM, 3PH, 60HZ, 184T, 3634M

Class - None

Division - Not Applicable

Specifications

| | |
|---------------------------------------|--------------------------------------|
| Enclosure | OPEN |
| Frame | 184T |
| Frame Material | Steel |
| Frequency | 60.00 Hz |
| Haz Area Class and Group | None |
| Haz Area Division | Not Applicable |
| Motor Letter Type | Three Phase |
| Output @ Frequency | 3.000 HP @ 60 HZ 1.300 HP @ 60 HZ |
| Phase | 3 |
| Synchronous Speed @ Frequency | 1800 RPM @ 60 HZ |
| Voltage @ Frequency | 230.0 V @ 60 HZ |
| Agency Approvals | UR CSA |
| Ambient Temperature | 40 °C |
| Auxiliary Box | NO AUXILLARY BOX |
| Auxiliary Box Lead Termination | None |
| Base Indicator | Rigid |
| Bearing Grease Type | Polyrex EM (-20F +300F) |
| Blower | None |
| Current @ Voltage | 8.000 A @ 230.0 V |
| Design Code | B |
| Drip Cover | No Drip Cover |
| Duty Rating | CONT |
| Electrically Isolated Bearing | Not Electrically Isolated |
| Feedback Device | NO FEEDBACK |
| Front Face Code | Standard |
| Front Shaft Indicator | None |
| Heater Indicator | No Heater |
| High Voltage Full Load Amps | 5.1 a |
| Insulation Class | F |
| Inverter Code | Not Inverter |

Part Detail

| | |
|---------------------|------------|
| Revision | AC |
| Type | AC |
| Mech. spec. | 36B001 |
| Base | |
| Status | PRD/A |
| Elec. spec. | 36WGW055 |
| Layout | 36LYB001 |
| Eff. date | 10-30-2025 |
| CD Diagram | CD0013 |
| Poles | 04/06 |
| Leads | 6#16 |
| Proprietary | False |
| Created date | 01-01-0001 |

| | |
|--------------------------------------|----------------------|
| KVA Code | G |
| Lifting Lugs | No Lifting Lugs |
| Locked Bearing Indicator | No Locked Bearing |
| Motor Lead Exit | Ko Box |
| Motor Lead Quantity/Wire Size | 6 @ 16 AWG |
| Motor Lead Termination | Flying Leads |
| Motor Standards | NEMA |
| Motor Type | 3634M |
| Mounting Arrangement | F1 |
| Number of Poles | 4 6 |
| Overall Length | 15.00 IN |
| Product Family | General Purpose |
| Pulley End Bearing Type | Ball |
| Pulley Face Code | Standard |
| Pulley Shaft Indicator | Standard |
| Rodent Screen | None |
| Service Factor | 1.15 |
| Shaft Diameter | 1.125 IN |
| Shaft Extension Location | Pulley End |
| Shaft Ground Indicator | No Shaft Grounding |
| Shaft Rotation | Reversible |
| Shaft Slinger Indicator | No Slinger |
| Speed | 1140 rpm 1725 rpm |
| Speed Code | 2S-2W-VT |
| Starting Method | Direct on line |
| Thermal Device - Bearing | None |
| Thermal Device - Winding | None |
| Vibration Sensor Indicator | No Vibration Sensor |
| Winding Thermal 1 | None |
| Winding Thermal 2 | None |

Nameplate

| NP1256L | | | | | | | | | | |
|---------------------|--------------|-------------|------------|------------|---|--------------|---|--|--|--|
| CAT.NO. | M1023T | | | | | | | | | |
| SPEC. | 36B01W55 | | | | | | | | | |
| HP | 3/1.3 | | | | | | | | | |
| VOLTS | 230 | | | | | | | | | |
| AMP | 8/5.1 | | | | | | | | | |
| RPM | 1725/1140 | | | | | | | | | |
| FRAME | 184T | | HZ | 60 | | PH | 3 | | | |
| SER.F. | 1.15 | CODE | G | DES | B | CLASS | F | | | |
| NEMA-NOM-EFF | | PF | | | | | | | | |
| RATING | 40C AMB-CONT | | | | | | | | | |
| CC | | | | | | | | | | |
| DE | 6206 | | ODE | 6205 | | | | | | |
| ENCL | OPEN | SN | | | | | | | | |

Accessories

| Part number | Description | Multiplier |
|--------------------|--------------------|-------------------|
| 36-3403 | C FACE KIT | A8 |
| 36EP1405A09SP | D-FLANGE KIT | A8 |

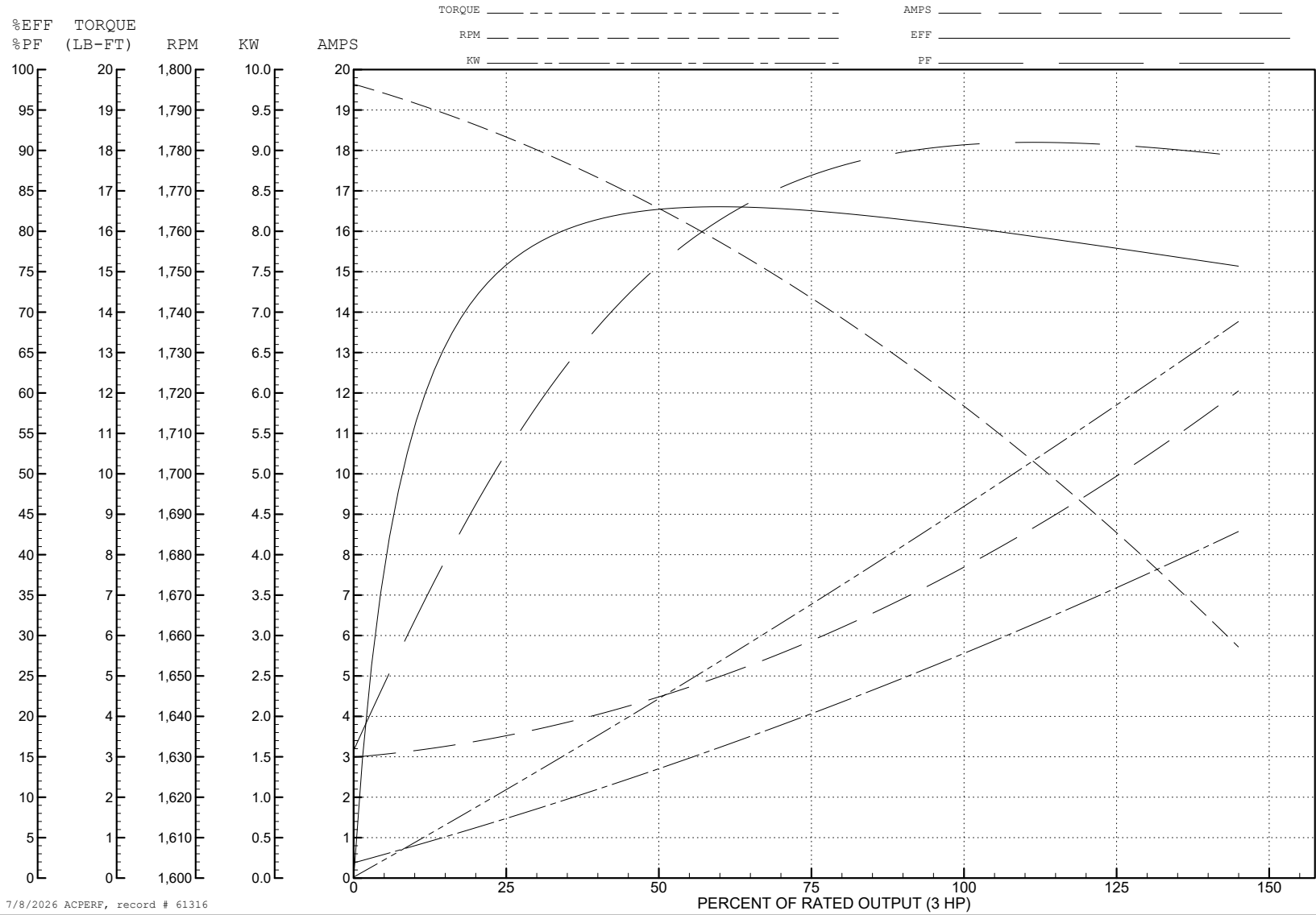
ABB Motors and Mechanical Inc.

WINDING # 36WGW055

3 HP 3 PH 60 HZ 1718 RPM 230 V 3634M

Typical performance - not guaranteed values.

TORQUES (LB-FT): PO=28 PU=13 LR=19 LRA=48



7/8/2026 ACPERF, record # 61316

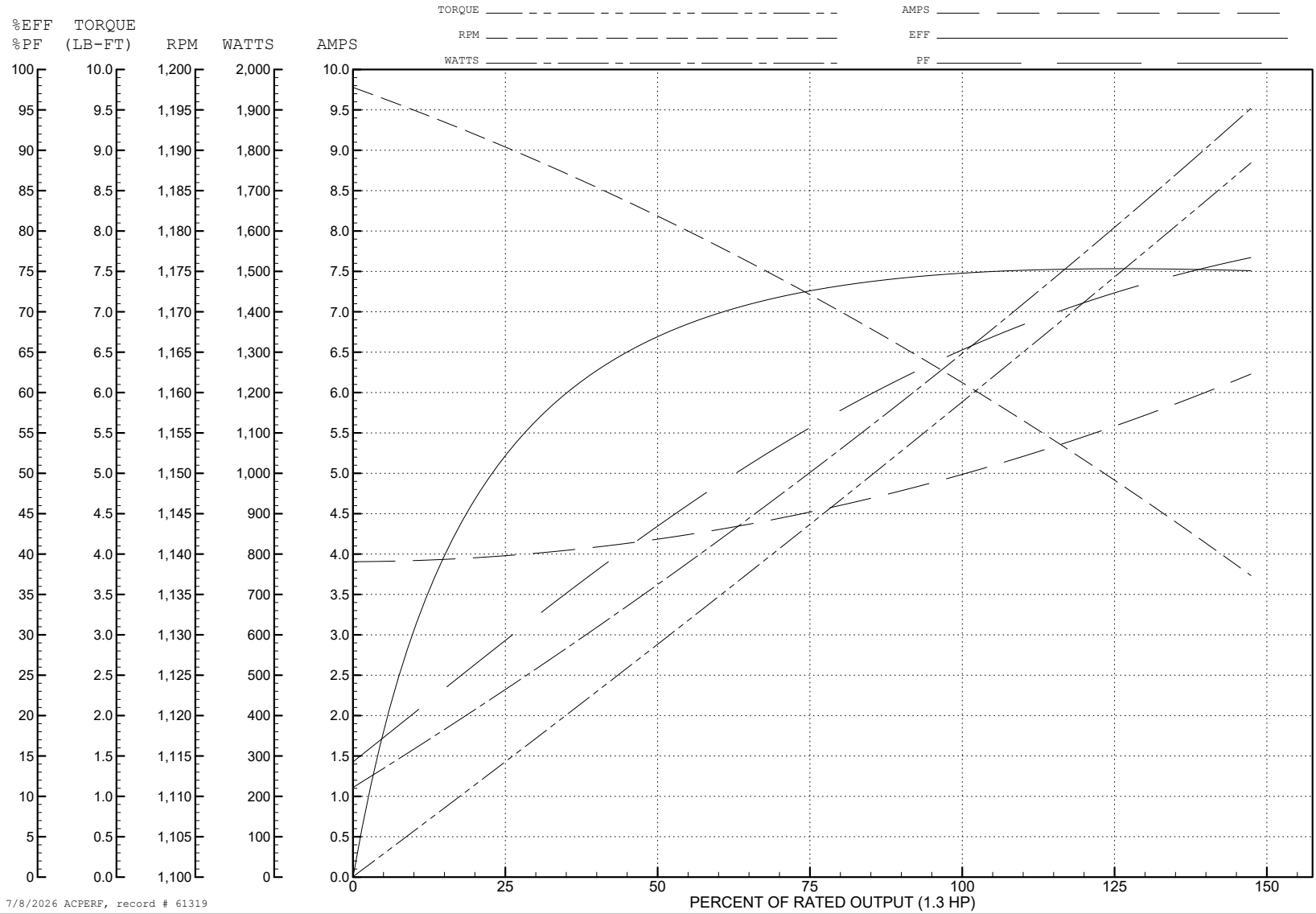
ABB Motors and Mechanical Inc.

WINDING # 36WG055

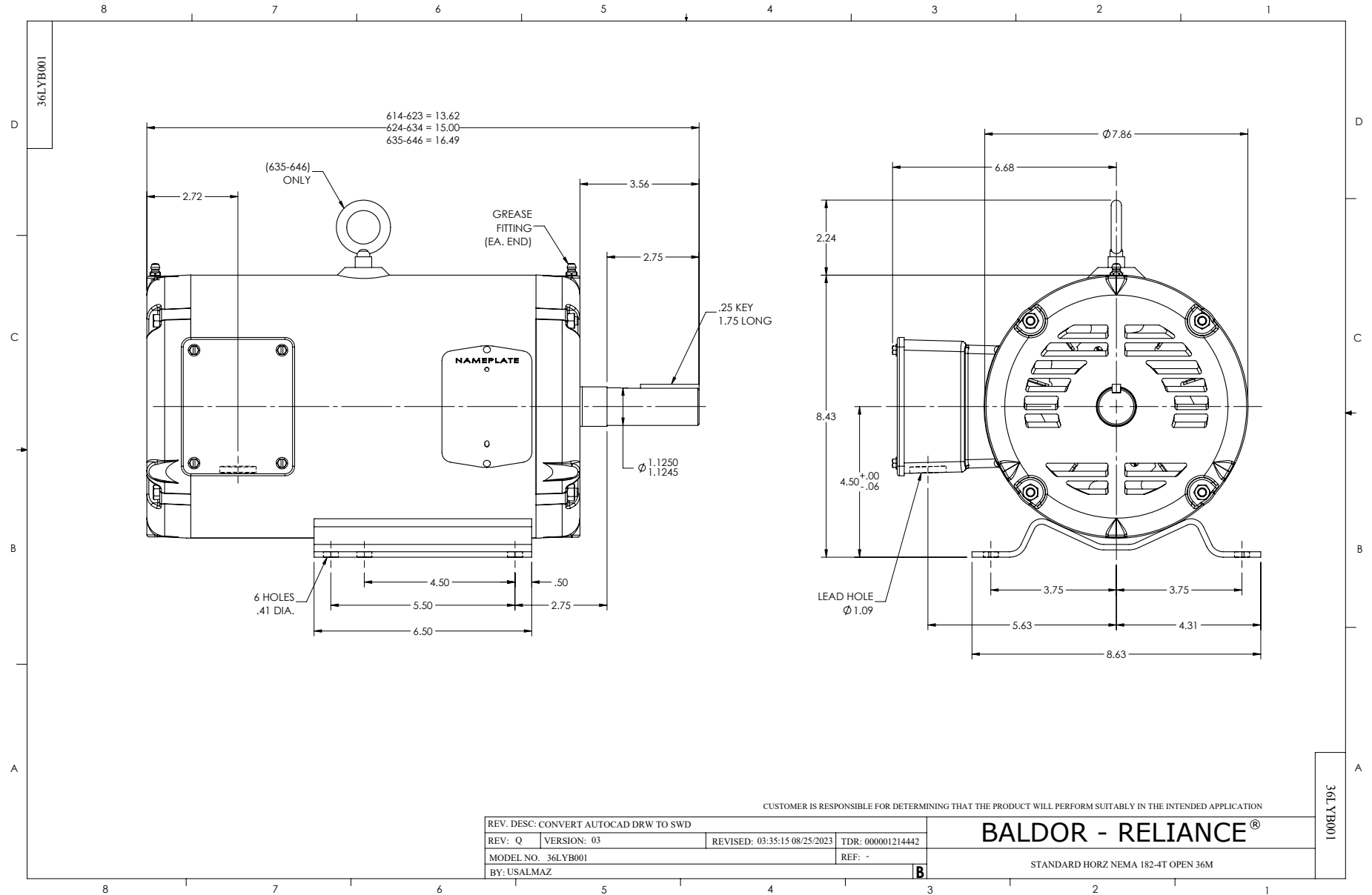
Typical performance - not guaranteed values.

1.3 HP 3 PH 60 HZ 1161 RPM 230 V 3634M

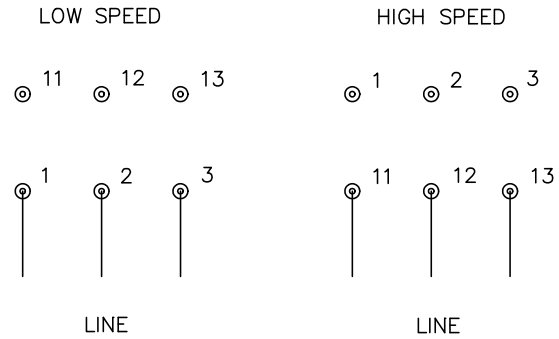
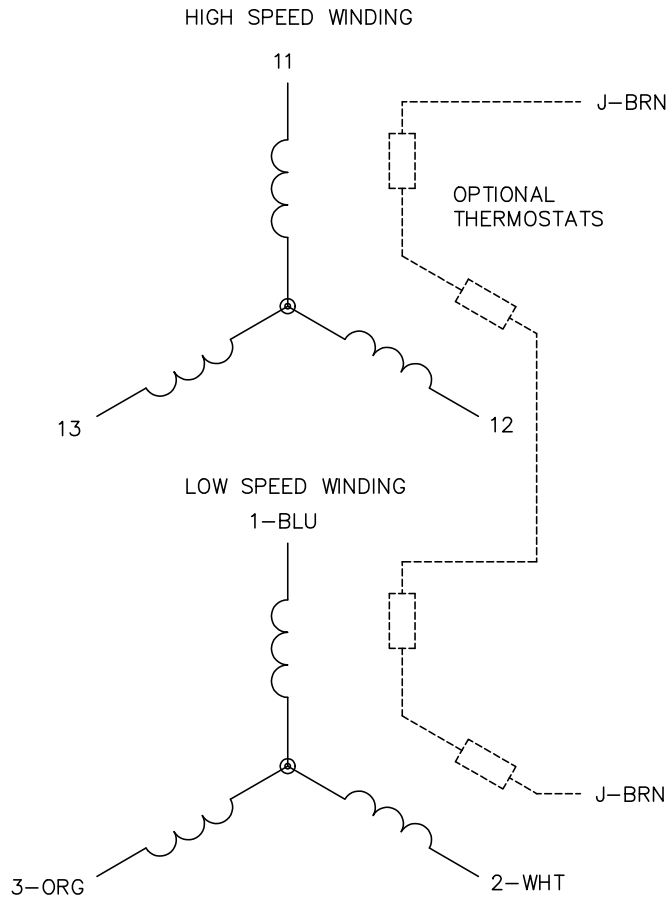
TORQUES (LB-FT): PO=17 PU=9.2 LR=10.3 LRA=24



7/8/2026 ACPERF, record # 61319



CD0013



NOTES:

1. INTERCHANGE ANY TWO LINE LEADS TO REVERSE ROTATION.
2. OPTIONAL THERMOSTATS ARE PROVIDED WHEN SPECIFIED.
3. ACTUAL NUMBER OF INTERNAL PARALLEL CIRCUITS MAY VARY.
4. LEAD COLORS ARE OPTIONAL. LEADS MUST ALWAYS BE NUMBERED AS SHOWN.

CD0013

| | | | |
|---|---------|------------------------|--------------|
| REV. DESC: REVISE TO SHOW OPTIONAL COLORS | | | |
| REV. LTR: D | BY: JLP | REVISED: 01/22/99 8:50 | TDR: 0171435 |
| Ω 10000 | | FILE: AAA00005143 | MDL: - |
| | | MTL: - | |

BALDOR ELECTRIC Co.

3PH, SV, 6 LEADS, 2-SPEED 2-WINDING