

BALDOR • RELIANCE

Customer information packet

M1022T

2/.89HP, 1725/1140RPM, 3PH, 60HZ, 182T, 3628M

Class - None

Division - Not Applicable

Copyright © All product information within this document is subject to ABB Motors and Mechanical Inc. copyright © protection, unless otherwise noted.

8/10/2024 3:07:23 PM

Specifications

Enclosure	OPEN
Frame	182T
Frame Material	Steel
Frequency	60.00 Hz
Haz Area Class and Group	None
Haz Area Division	Not Applicable
Motor Letter Type	Three Phase
Output @ Frequency	2.000 HP @ 60 HZ .890 HP @ 60 HZ
Phase	3
Synchronous Speed @ Frequency	1800 RPM @ 60 HZ
Voltage @ Frequency	230.0 V @ 60 HZ
Agency Approvals	UR CSA
Ambient Temperature	40 °C
Auxillary Box	No Auxillary Box
Auxillary Box Lead Termination	None
Base Indicator	Rigid
Bearing Grease Type	Polyrex EM (-20F +300F)
Blower	None
Current @ Voltage	5.800 A @ 230.0 V
Design Code	B
Drip Cover	No Drip Cover
Duty Rating	CONT
Electrically Isolated Bearing	Not Electrically Isolated
Feedback Device	NO FEEDBACK
Front Face Code	Standard
Front Shaft Indicator	None
Heater Indicator	No Heater
High Voltage Full Load Amps	3.2 a
Insulation Class	F
Inverter Code	Not Inverter

Part detail

Revision	Z
Type	AC
Mech. spec.	36B001
Base	
Status	PRD/A
Elec. spec.	36WGW065
Layout	36LYB001
Eff. date	05-09-2024
CD Diagram	CD0013
Poles	04/06
Leads	6#16
Proprietary	False
Created date	01-01-0001

KVA Code	F
Lifting Lugs	No Lifting Lugs
Locked Bearing Indicator	No Locked Bearing
Motor Lead Exit	Ko Box
Motor Lead Quantity/Wire Size	6 @ 16 AWG
Motor Lead Termination	Flying Leads
Motor Standards	NEMA
Motor Type	3628M
Mounting Arrangement	F1
Number of Poles	4 6
Overall Length	15.00 IN
Product Family	General Purpose
Pulley End Bearing Type	Ball
Pulley Face Code	Standard
Pulley Shaft Indicator	Standard
Rodent Screen	None
Service Factor	1.15
Shaft Diameter	1.125 IN
Shaft Extension Location	Pulley End
Shaft Ground Indicator	No Shaft Grounding
Shaft Rotation	Reversible
Shaft Slinger Indicator	No Slinger
Speed	1140 rpm 1725 rpm
Speed Code	2S-2W-VT
Starting Method	Direct on line
Thermal Device - Bearing	None
Thermal Device - Winding	None
Vibration Sensor Indicator	No Vibration Sensor
Winding Thermal 1	None
Winding Thermal 2	None

Nameplate

NP1256L									
CAT.NO.	M1022T								
SPEC.	36B01W65								
HP	2/.89								
VOLTS	230								
AMP	5.8/3.2								
RPM	1725/1140								
FRAME	182T		HZ	60		PH	3		
SER.F.	1.15	CODE	F	DES	B	CLASS	F		
NEMA-NOM-EFF		PF							
RATING	40C AMB-CONT								
CC									
DE	6206		ODE	6205					
ENCL	OPEN	SN							

Accessories

Part number	Description	Multiplier
36-3403	C FACE KIT	A8
36EP1405A09SP	D-FLANGE KIT	

AC Induction Motor Performance Data

Record # 61296

Typical performance - not guaranteed values

Winding: 36WGW065-R002		Type: 3628M	Enclosure: TEFC
Nameplate Data		230 V, 60 Hz: High Speed Connection	
Rated Output (HP)	2/.89	Full Load Torque	6 LB-FT
Volts	230	Start Configuration	direct on line
Full Load Amps	5.8/3.2	Breakdown Torque	16.5 LB-FT
R.P.M.	1725/1140	Pull-up Torque	12.7 LB-FT
Hz	60 Phase	Locked-rotor Torque	14.7 LB-FT
NEMA Design Code	B KVA Code	Starting Current	33.4 A
Service Factor (S.F.)	1.15	No-load Current	2.2 A
NEMA Nom. Eff.	0 Power Factor	Line-line Res. @ 25°C	3.58 Ω
Rating - Duty	40C AMB-CONT	Temp. Rise @ Rated Load	62°C
S.F. Amps		Temp. Rise @ S.F. Load	77°C
		Locked-rotor Power Factor	69.7
		Rotor inertia	0.263 LB-FT ²

Load Characteristics 230 V, 60 Hz, 2 HP

% of Rated Load	25	50	75	100	125	150	S.F.
Power Factor	52	67	85	87	95	92	92
Efficiency	69.6	77.5	78.4	78.1	77	73.7	77.4
Speed	1775	1750	1736	1710	1691	1647	1699
Line amperes	2.6	3.6	4.2	5.4	6.2	7.8	5.88

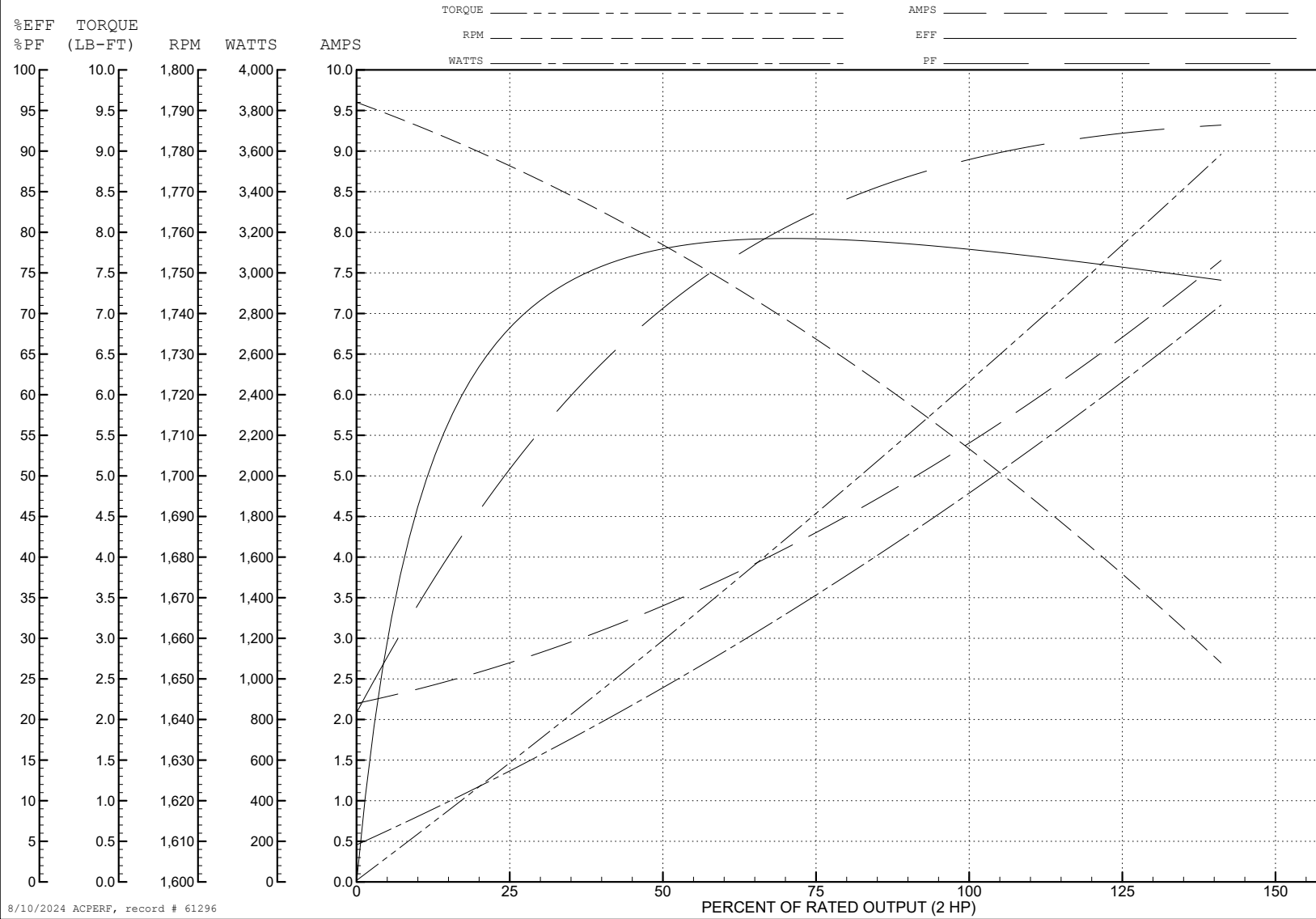
ABB Motors and Mechanical Inc.

WINDING # 36WGW065

Typical performance - not guaranteed values.

2 HP 3 PH 60 HZ 1710 RPM 230 V 3628M

TORQUES (LB-FT): PO=16.5 PU=12.7 LR=14.7 LRA=33.4



8/10/2024 ACPERF, record # 61296

AC Induction Motor Performance Data

Record # 61297

Typical performance - not guaranteed values

Winding: 36WGW065-R002		Type: 3628M	Enclosure: TEFC
Nameplate Data			230 V, 60 Hz: Low Speed Connection
Rated Output (HP)	2/.89	Full Load Torque	4 LB-FT
Volts	230	Start Configuration	direct on line
Full Load Amps	5.8/3.2	Breakdown Torque	13 LB-FT
R.P.M.	1725/1140	Pull-up Torque	8.2 LB-FT
Hz	60 Phase	Locked-rotor Torque	8.7 LB-FT
NEMA Design Code	B KVA Code	Starting Current	17.8 A
Service Factor (S.F.)	1.15	No-load Current	2.4 A
NEMA Nom. Eff.	0 Power Factor	Line-line Res. @ 25°C	6.62 Ω
Rating - Duty	40C AMB-CONT	Temp. Rise @ Rated Load	47°C
S.F. Amps		Temp. Rise @ S.F. Load	54°C
		Locked-rotor Power Factor	67.3
		Rotor inertia	0.263 LB-FT ²

Load Characteristics 230 V, 60 Hz, 0.89 HP

% of Rated Load	25	50	75	100	125	150	S.F.
Power Factor	31	48	61	68	75	77	72
Efficiency	51.8	62.4	68.7	71.4	72.4	71.9	72
Speed	1190	1182	1172	1163	1151	1134	1156
Line amperes	2.6	2.8	3	3.4	3.8	4.4	3.64

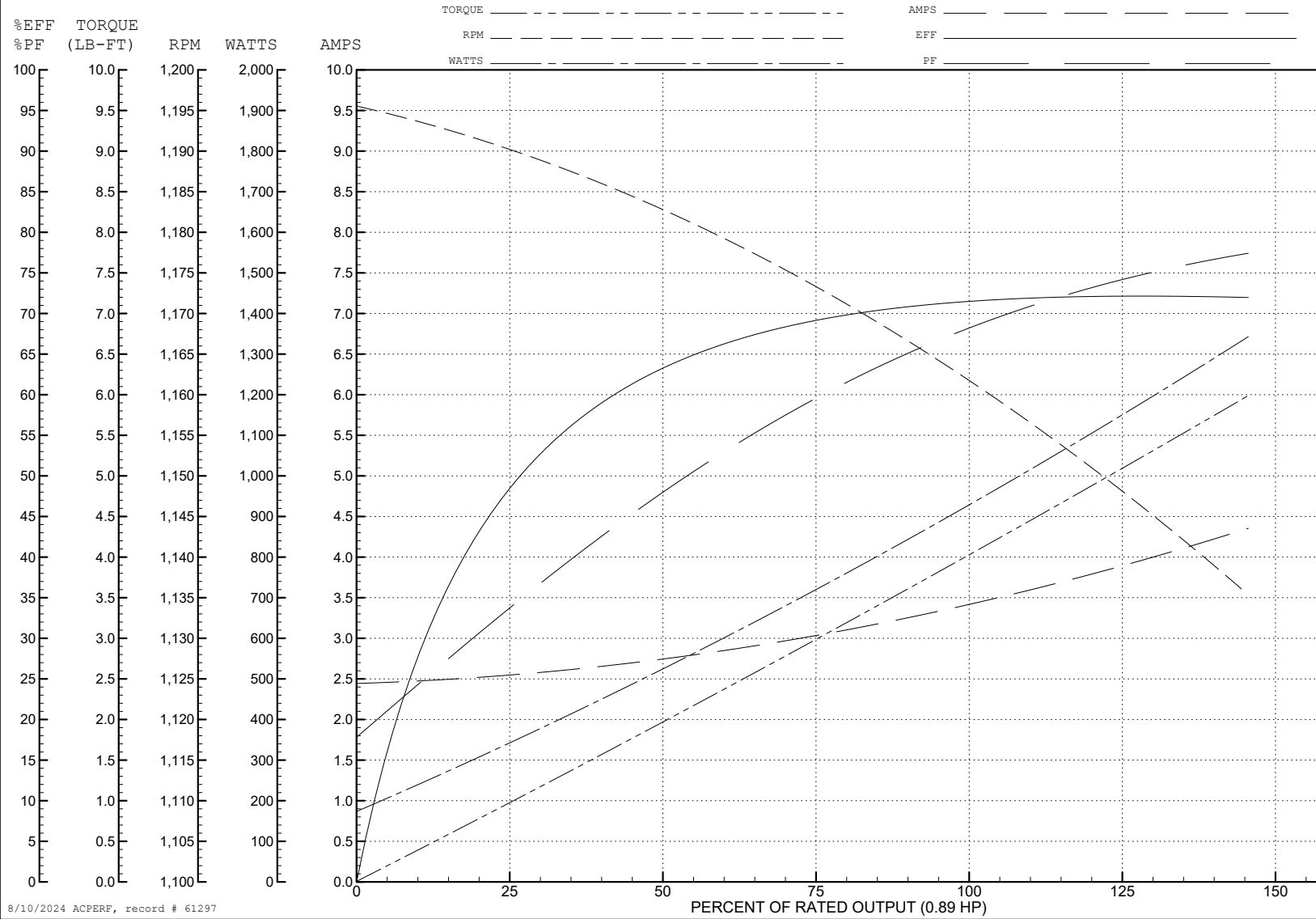
ABB Motors and Mechanical Inc.

WINDING # 36WGW065

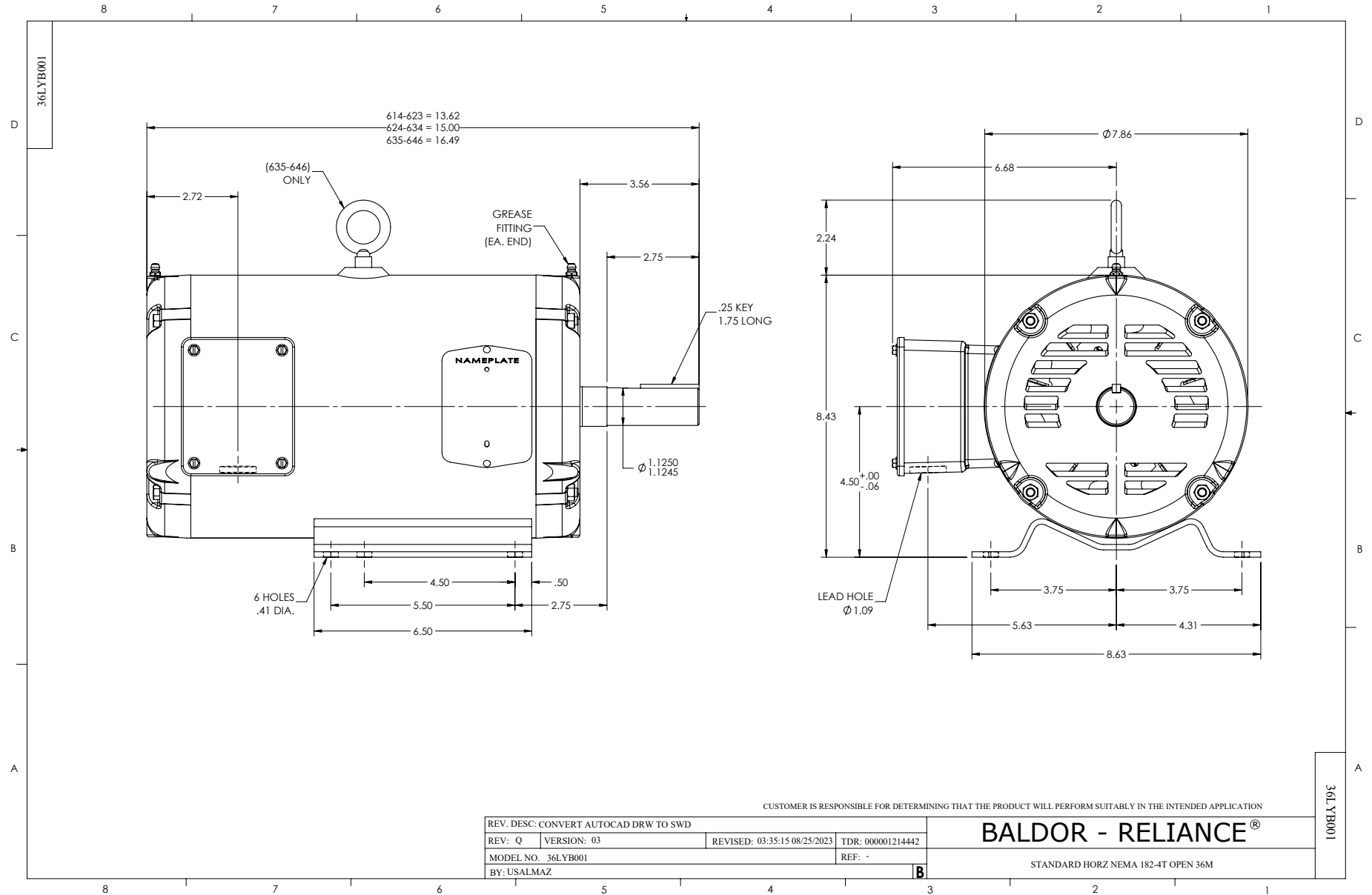
0.89 HP 3 PH 60 HZ 1163 RPM 230 V 3628M

Typical performance - not guaranteed values.

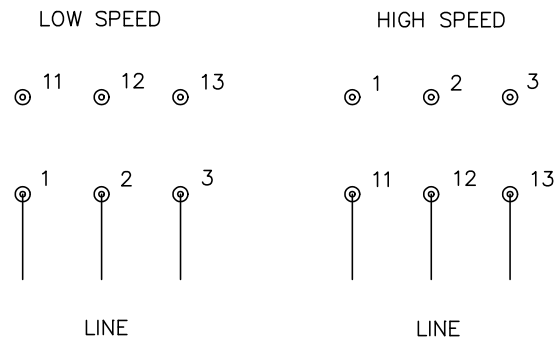
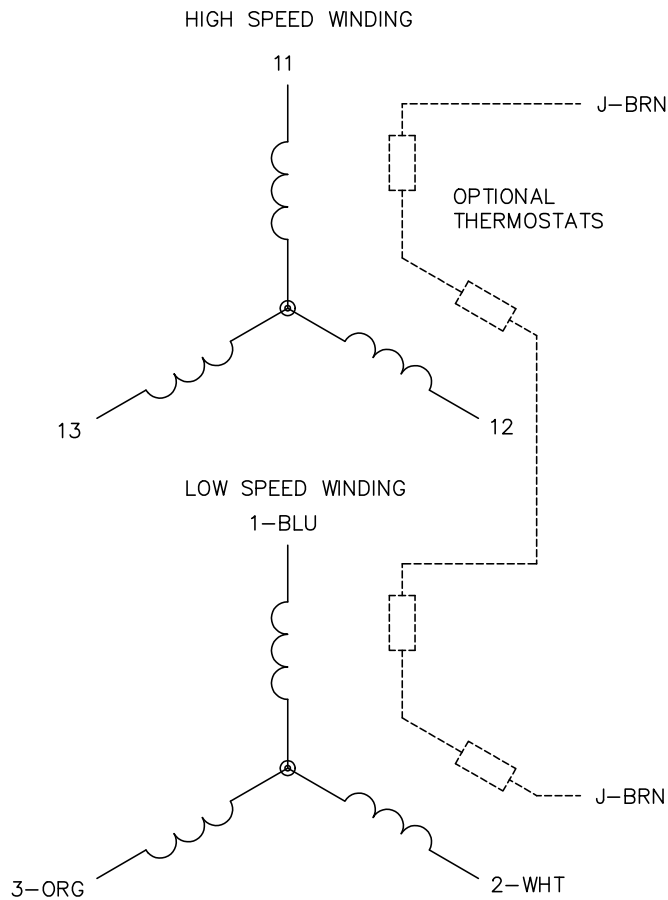
TORQUES (LB-FT): PO=13 PU=8.2 LR=8.7 LRA=17.8



8/10/2024 ACPERF, record # 61297



CD0013



NOTES:

1. INTERCHANGE ANY TWO LINE LEADS TO REVERSE ROTATION.
2. OPTIONAL THERMOSTATS ARE PROVIDED WHEN SPECIFIED.
3. ACTUAL NUMBER OF INTERNAL PARALLEL CIRCUITS MAY VARY.
4. LEAD COLORS ARE OPTIONAL. LEADS MUST ALWAYS BE NUMBERED AS SHOWN.

CD0013

REV. DESC: REVISE TO SHOW OPTIONAL COLORS			
REV. LTR: D	BY: JLP	REVISED: 01/22/99 8:50	TDR: 0171435
Ω 10000		FILE: AAA00005143	MDL: -
		MTL: -	

BALDOR ELECTRIC Co.

3PH, SV, 6 LEADS, 2-SPEED 2-WINDING