

BALDOR • RELIANCE

Customer information packet

M1020T

1/.44HP, 1740/1170RPM, 3PH, 60HZ, 145T, 3528M

Class - None

Division - Not Applicable

Specifications

Enclosure	OPEN
Frame	145T
Frame Material	Steel
Frequency	60.00 Hz
Haz Area Class and Group	None
Haz Area Division	Not Applicable
Motor Letter Type	Three Phase
Output @ Frequency	1.000 HP @ 60 HZ .440 HP @ 60 HZ
Phase	3
Synchronous Speed @ Frequency	1200 RPM @ 60 HZ
Voltage @ Frequency	230.0 V @ 60 HZ
Agency Approvals	UR CSA
Ambient Temperature	60 °C
Auxillary Box	No Auxillary Box
Auxillary Box Lead Termination	None
Base Indicator	Rigid
Bearing Grease Type	Polyrex EM (-20F +300F)
Blower	None
Current @ Voltage	3.200 A @ 230.0 V
Design Code	B
Drip Cover	No Drip Cover
Duty Rating	CONT
Electrically Isolated Bearing	Not Electrically Isolated
Feedback Device	NO FEEDBACK
Front Shaft Indicator	None
Heater Indicator	No Heater
High Voltage Full Load Amps	2.3 a
Insulation Class	F
Inverter Code	Not Inverter
KVA Code	K

Part detail

Revision	C
Type	AC
Mech. spec.	35BB001
Base	
Status	PRD/A
Elec. spec.	35WGG360
Layout	35LYBB001
Eff. date	07-02-2024
CD Diagram	CD0013
Poles	04/06
Leads	6#18 Y
Proprietary	False
Created date	02-23-2023

Lifting Lugs	No Lifting Lugs
Locked Bearing Indicator	No Locked Bearing
Motor Lead Quantity/Wire Size	6 @ 18 AWG
Motor Lead Termination	Flying Leads
Motor Standards	NEMA
Motor Type	3528M
Mounting Arrangement	F1
Number of Poles	4 6
Overall Length	12.13 IN
Product Family	General Purpose
Pulley End Bearing Type	Ball
Pulley Face Code	Standard
Pulley Shaft Indicator	Standard
Rodent Screen	None
Service Factor	1.15
Shaft Diameter	0.875 IN
Shaft Ground Indicator	No Shaft Grounding
Shaft Rotation	Reversible
Shaft Slinger Indicator	No Slinger
Speed	1170 rpm 1740 rpm
Speed Code	2S-2W-VT
Starting Method	Direct on line
Thermal Device - Bearing	None
Thermal Device - Winding	None
Vibration Sensor Indicator	No Vibration Sensor
Winding Thermal 1	None
Winding Thermal 2	None

Nameplate

NP1256L									
CAT.NO.	M1020T								
SPEC.	35BB001G360								
HP	1/.44								
VOLTS	230								
AMP	3.2/2.3								
RPM	1740/1170								
FRAME	145T		HZ	60		PH	3		
SER.F.	1.15	CODE	K	DES	B	CLASS	F		
NEMA-NOM-EFF		PF							
RATING	60C AMB-CONT								
CC									
DE	6205		ODE	6203					
ENCL	OPEN	SN							
	SFA 3.41								

Accessories

Part number	Description	Multiplier
35-8764	C FACE KIT	A8
35EP1604A01SP	D-FLANGE KIT	A8

AC Induction Motor Performance Data

Record # 87887

Preliminary Data Sheet

Winding: 35WGG360-R002		Type: 3528M		Enclosure: OPEN	
Nameplate Data			230 V, 60 Hz: High Speed Connection		
Rated Output (HP)	1/.44	Full Load Torque	3.08 LB-FT		
Volts	230	Start Configuration	direct on line		
Full Load Amps	3.2/2.3	Breakdown Torque	9.55 LB-FT		
R.P.M.	1740/1170	Pull-up Torque	5.68 LB-FT		
Hz	60 Phase	3	Locked-rotor Torque	9.18 LB-FT	
NEMA Design Code	B KVA Code	K	Starting Current	20 A	
Service Factor (S.F.)		1.15	No-load Current	2 A	
NEMA Nom. Eff.	0 Power Factor	0	Line-line Res. @ 25°C	7.79 Ω	
Rating - Duty	60C AMB-CONT		Temp. Rise @ Rated Load	57°C	
S.F. Amps			Temp. Rise @ S.F. Load	68°C	
			Locked-rotor Power Factor	86.3	
			Rotor inertia	0.202 lb-ft ²	

Load Characteristics 230 V, 60 Hz, 1 HP

% of Rated Load	25	50	75	100	125	150	S.F.
Power Factor	39	44	72	80	85	89	83
Efficiency	61.5	73.6	76.9	77.5	76.3	74	76.8
Speed	1783	1769	1752	1733	1711	1686	1720
Line amperes	2.07	1.28	2.6	3.07	3.63	4.19	3.41

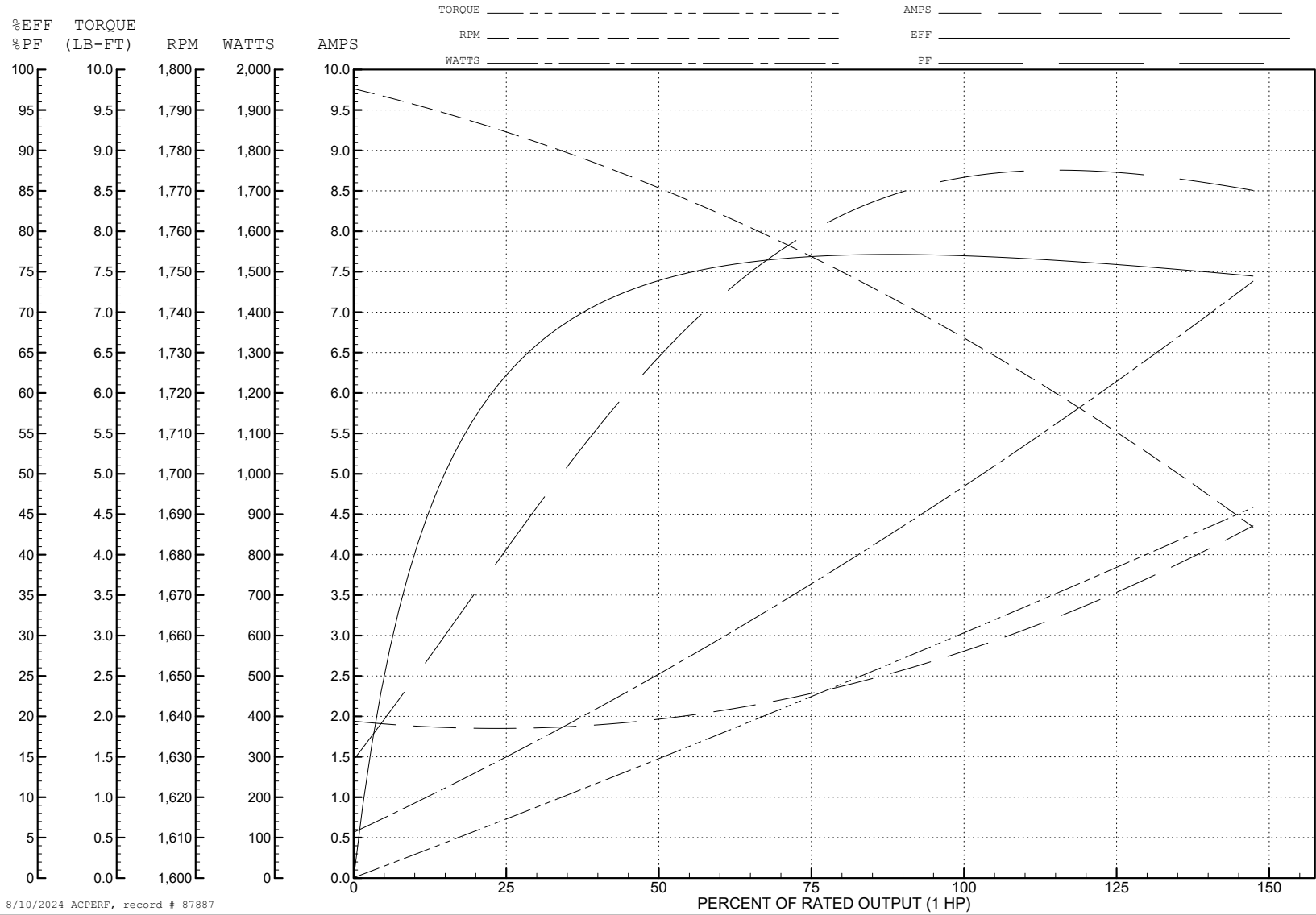
ABB Motors and Mechanical Inc.

WINDING # 35WGG360

1 HP 3 PH 60 HZ 1733 RPM 230 V 3528M

Typical performance - not guaranteed values.

TORQUES (LB-FT): PO=9.55 PU=5.68 LR=9.18 LRA=20



8/10/2024 ACPERF, record # 87887

AC Induction Motor Performance Data

Record # 87888

Preliminary Data Sheet

Winding: 35WGG360-R002		Type: 3528M		Enclosure: OPEN	
Nameplate Data			230 V, 60 Hz: Low Speed Connection		
Rated Output (HP)	1/.44	Full Load Torque	1.97 LB-FT		
Volts	230	Start Configuration	direct on line		
Full Load Amps	3.2/2.3	Breakdown Torque	8.6 LB-FT		
R.P.M.	1740/1170	Pull-up Torque	4.59 LB-FT		
Hz	60 Phase	3	Locked-rotor Torque	5.78 LB-FT	
NEMA Design Code	B	KVA Code	K	Starting Current	11.8 A
Service Factor (S.F.)	1.15	No-load Current	2.19 A		
NEMA Nom. Eff.	0	Power Factor	0	Line-line Res. @ 25°C	13.8 Ω
Rating - Duty	60C AMB-CONT		Temp. Rise @ Rated Load		
			Locked-rotor Power Factor	85.9	
			Rotor inertia	0.202 lb-ft ²	

Load Characteristics 230 V, 60 Hz, 0.44 HP

% of Rated Load	25	50	75	100	125	150	S.F.
Power Factor	25	35	44	52	60	67	57
Efficiency	37.4	53.6	62.2	66.9	69.6	70.9	68.5
Speed	1193	1188	1182	1175	1168	1161	1171
Line amperes	2.19	2.21	2.27	2.35	2.46	2.61	2.42

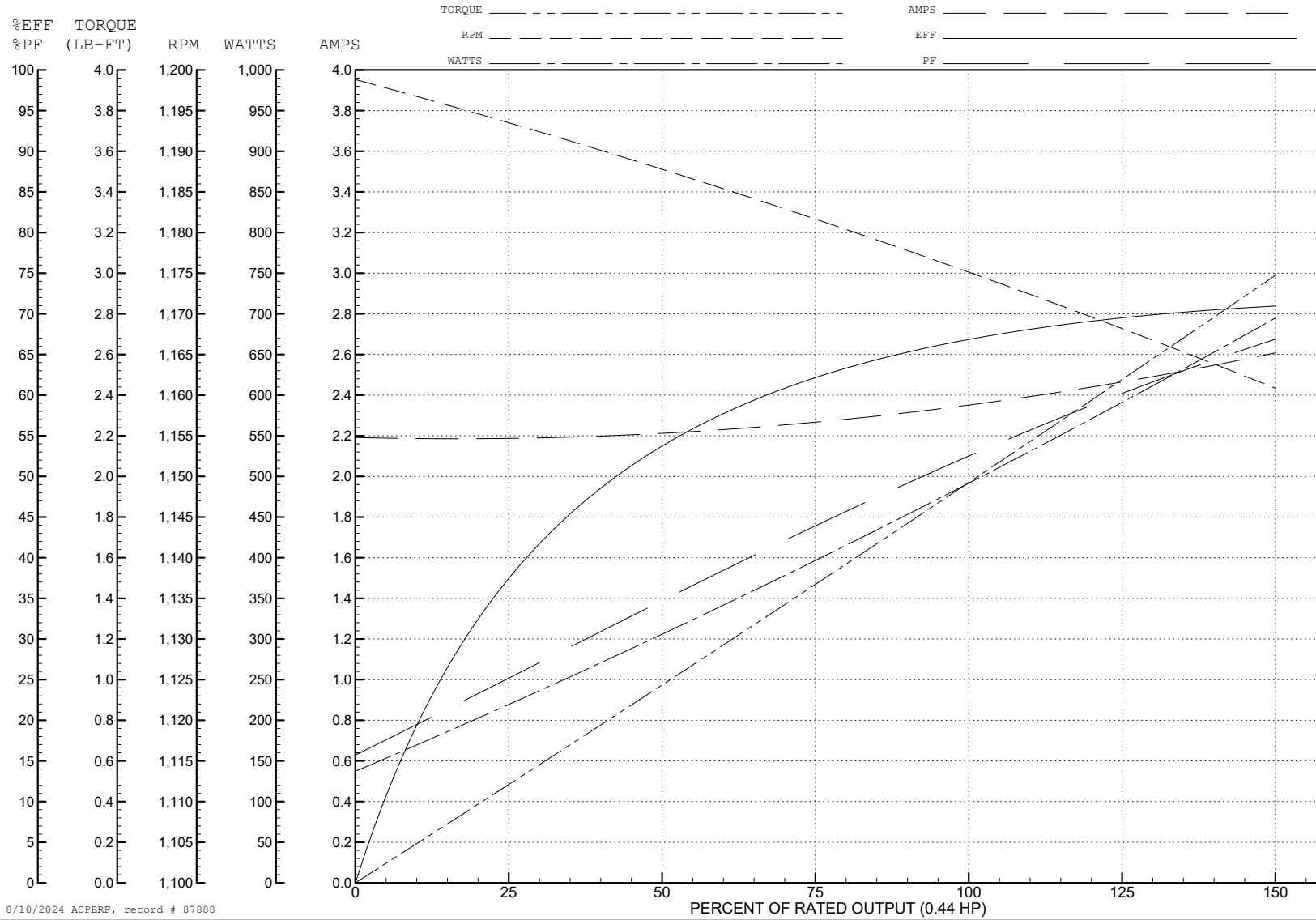
ABB Motors and Mechanical Inc.

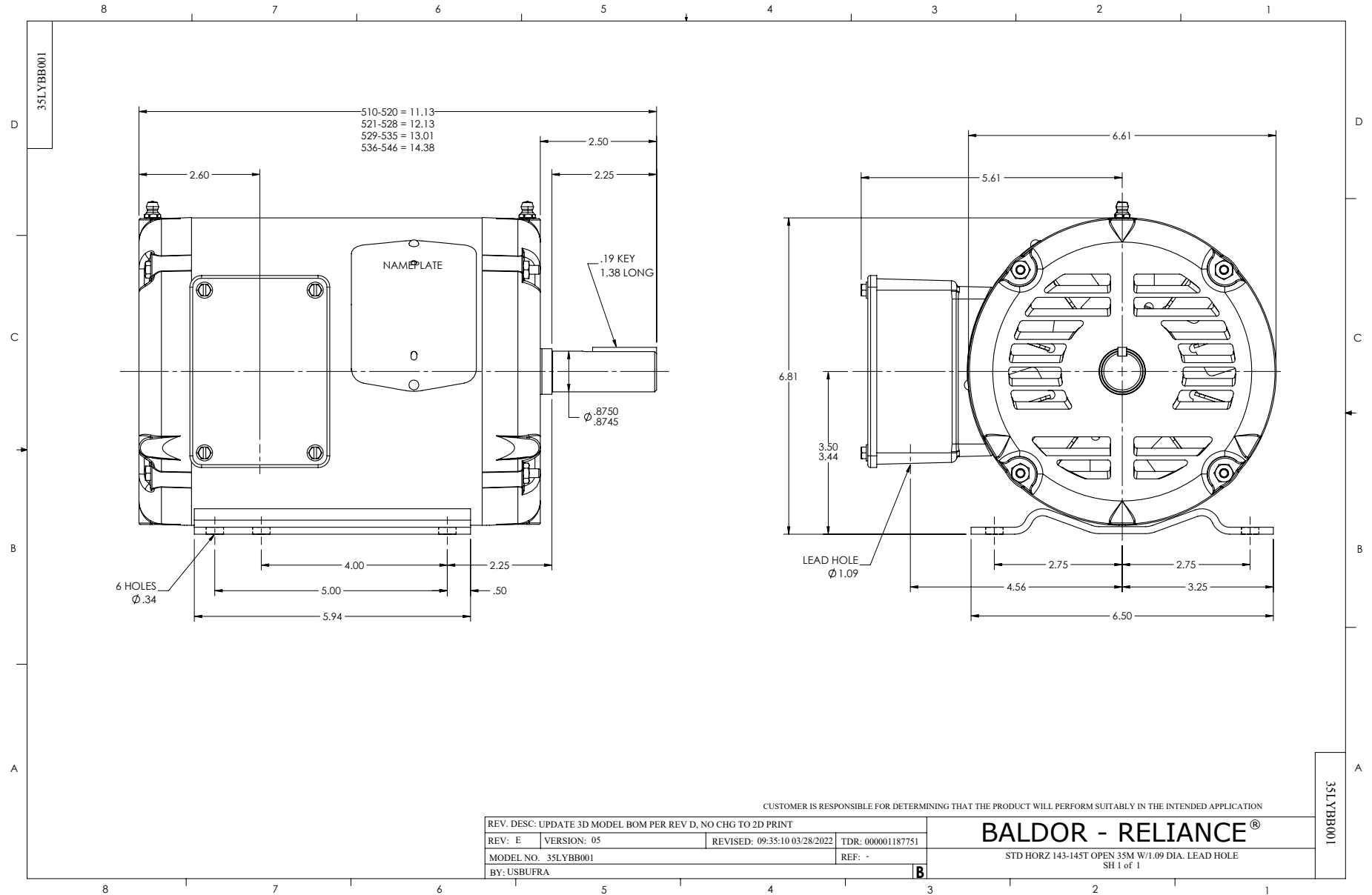
WINDING # 35WGG360

0.44 HP 3 PH 60 HZ 1175 RPM 230 V 3528M

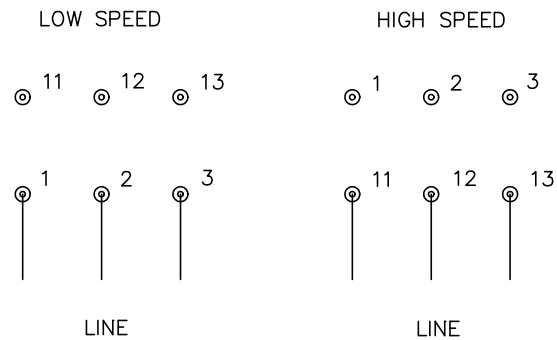
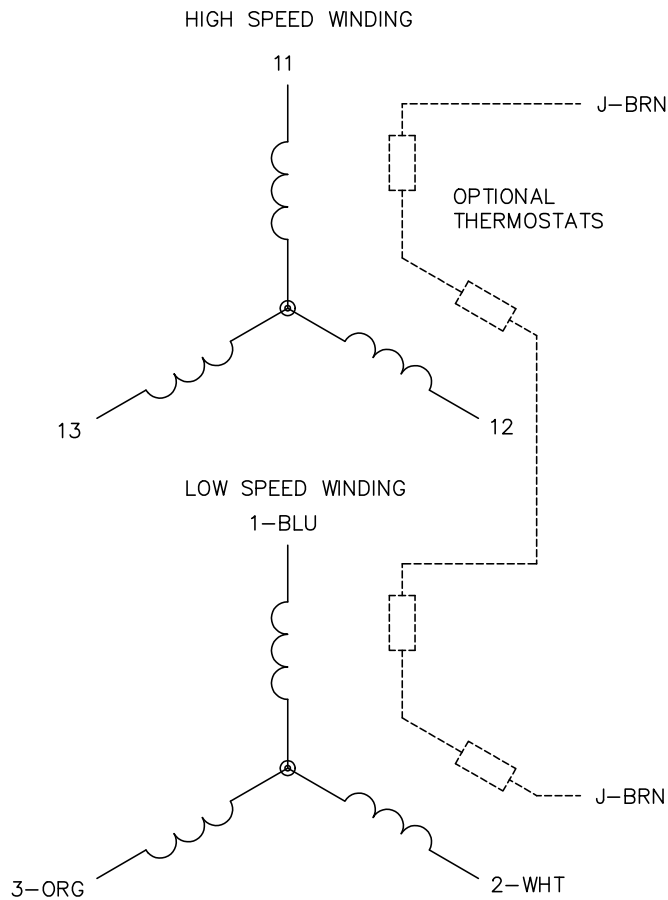
Typical performance - not guaranteed values.

TORQUES (LB-FT): PO=8.6 PU=4.59 LR=5.78 LRA=11.8





CD0013



NOTES:

1. INTERCHANGE ANY TWO LINE LEADS TO REVERSE ROTATION.
2. OPTIONAL THERMOSTATS ARE PROVIDED WHEN SPECIFIED.
3. ACTUAL NUMBER OF INTERNAL PARALLEL CIRCUITS MAY VARY.
4. LEAD COLORS ARE OPTIONAL. LEADS MUST ALWAYS BE NUMBERED AS SHOWN.

CD0013

REV. DESC: REVISE TO SHOW OPTIONAL COLORS			
REV. LTR: D	BY: JLP	REVISED: 01/22/99 8:50	TDR: 0171435
Ω 10000		FILE: AAA00005143	MDL: -
		MTL: -	

BALDOR ELECTRIC Co.

3PH, SV, 6 LEADS, 2-SPEED 2-WINDING