



Customer information packet

M1009T

7.5/1.9HP, 1730/860RPM, 3PH, 60HZ, 213T, 3734

Class - None

Division - Not Applicable

Specifications

Enclosure	OPEN
Frame	213T
Frame Material	Steel
Frequency	60.00 Hz
Haz Area Class and Group	None
Haz Area Division	Not Applicable
Motor Letter Type	Three Phase
Output @ Frequency	7.500 HP @ 60 HZ 1.900 HP @ 60 HZ
Phase	3
Synchronous Speed @ Frequency	900 RPM @ 60 HZ
Voltage @ Frequency	230.0 V @ 60 HZ
Agency Approvals	UR CSA
Ambient Temperature	40 °C
Auxillary Box	No Auxillary Box
Auxillary Box Lead Termination	None
Base Indicator	Rigid
Bearing Grease Type	Polyrex EM (-20F +300F)
Blower	None
Current @ Voltage	18.600 A @ 230.0 V
Design Code	B
Drip Cover	No Drip Cover
Duty Rating	CONT
Electrically Isolated Bearing	Not Electrically Isolated
Feedback Device	NO FEEDBACK
Front Shaft Indicator	None
Heater Indicator	No Heater
High Voltage Full Load Amps	7.3 a
Insulation Class	B
Inverter Code	Not Inverter
KVA Code	J

Part detail

Revision	B
Type	AC
Mech. spec.	37B001
Base	
Status	PRD/A
Elec. spec.	37WGZ660
Layout	37LYB001
Eff. date	05-10-2024
CD Diagram	CD0032
Poles	04/08
Leads	6#12
Proprietary	False
Created date	12-14-2020

Lifting Lugs	Standard Lifting Lugs
Locked Bearing Indicator	No Locked Bearing
Motor Lead Quantity/Wire Size	6 @ 12 AWG
Motor Lead Termination	Flying Leads
Motor Standards	NEMA
Motor Type	3734M
Mounting Arrangement	F1
Number of Poles	4 8
Overall Length	16.32 IN
Product Family	General Purpose
Pulley End Bearing Type	Ball
Pulley Face Code	Standard
Pulley Shaft Indicator	Standard
Rodent Screen	None
Service Factor	1.15
Shaft Diameter	1.375 IN
Shaft Ground Indicator	No Shaft Grounding
Shaft Rotation	Reversible
Shaft Slinger Indicator	No Slinger
Speed	1730 rpm 860 rpm
Speed Code	2S-1W-VT
Starting Method	Direct on line
Thermal Device - Bearing	None
Thermal Device - Winding	None
Vibration Sensor Indicator	No Vibration Sensor
Winding Thermal 1	None
Winding Thermal 2	None

Nameplate

NP1256L									
CAT.NO.	M1009T								
SPEC.	37B001Z660								
HP	7.5/1.9								
VOLTS	230								
AMP	18.6/7.3								
RPM	1730/860								
FRAME	213T		HZ	60		PH	3		
SER.F.	1.15	CODE	J	DES	B	CLASS	B		
NEMA-NOM-EFF		PF							
RATING	40C AMB-CONT								
CC									
DE	6307		ODE	6206					
ENCL	OPEN	SN							

Accessories

Part number	Description	Multiplier
37-1404	C FACE KIT	A8

AC Induction Motor Performance Data

Record # 85841

Typical performance - not guaranteed values

Winding: 37WGZ660-R001		Type: 3734M	Enclosure: OPEN
Nameplate Data		230 V, 60 Hz: High Speed Connection	
Rated Output (HP)	7.5/1.9	Full Load Torque	22.8 LB-FT
Volts	230	Start Configuration	direct on line
Full Load Amps	18.6/7.3	Breakdown Torque	71.84 LB-FT
R.P.M.	1730/860	Pull-up Torque	59.18 LB-FT
Hz	60 Phase 3	Locked-rotor Torque	66.32 LB-FT
NEMA Design Code	B KVA Code J	Starting Current	139 A
Service Factor (S.F.)	1.15	No-load Current	8.03 A
NEMA Nom. Eff.	0 Power Factor 0	Line-line Res. @ 25°C	0.639 Ω
Rating - Duty	40C AMB-CONT	Temp. Rise @ Rated Load	56°C
S.F. Amps		Temp. Rise @ S.F. Load	70°C
		Locked-rotor Power Factor	56.6
		Rotor inertia	0.836 lb-ft ²

Load Characteristics 230 V, 60 Hz, 7.5 HP

% of Rated Load	25	50	75	100	125	150	S.F.
Power Factor	50	73	83	88	89	89	86
Efficiency	80.4	86.1	86.8	86.1	84.7	82.6	84.7
Speed	1783	1768	1751	1732	1712	1689	1712
Line amperes	9.03	11.48	14.77	18.62	23	27.9	22.1

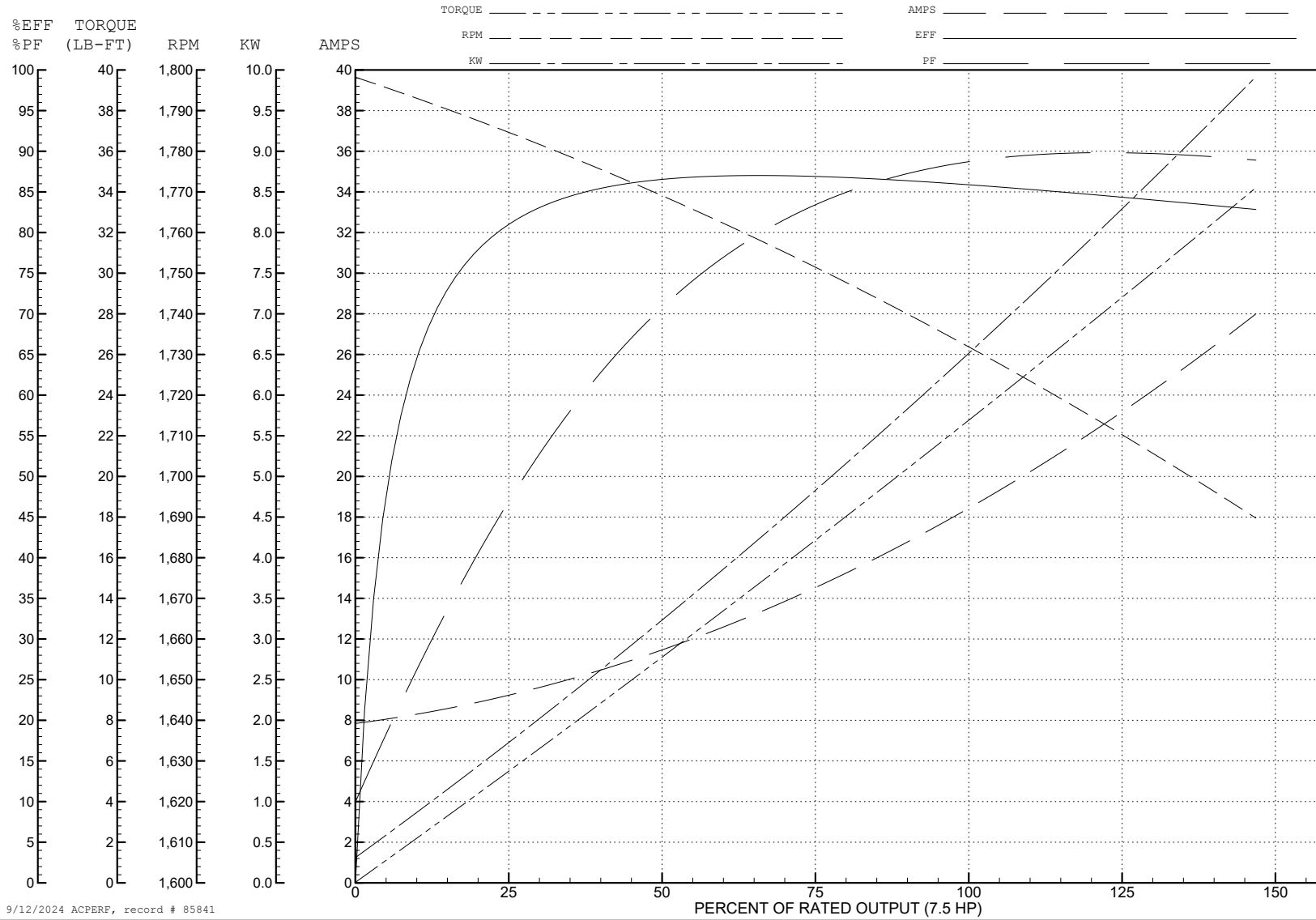
ABB Motors and Mechanical Inc.

WINDING # 37WGZ660

Typical performance - not guaranteed values.

7.5 HP 3 PH 60 HZ 1732 RPM 230 V 3734M

TORQUES (LB-FT): PO=71.84 PU=59.18 LR=66.32 LRA=139



9/12/2024 ACPERF, record # 85841

AC Induction Motor Performance Data

Record # 85842

Typical performance - not guaranteed values

Winding: 37WGZ660-R001		Type: 3734M	Enclosure: OPEN
Nameplate Data		230 V, 60 Hz: Low Speed Connection	
Rated Output (HP)	7.5/1.9	Full Load Torque	11.55 LB-FT
Volts	230	Start Configuration	direct on line
Full Load Amps	18.6/7.3	Breakdown Torque	31.64 LB-FT
R.P.M.	1730/860	Pull-up Torque	21.87 LB-FT
Hz	60 Phase	Locked-rotor Torque	24.3 LB-FT
NEMA Design Code	B KVA Code	Starting Current	34.15 A
Service Factor (S.F.)	1.15	No-load Current	5.55 A
NEMA Nom. Eff.	0 Power Factor	Line-line Res. @ 25°C	2.56 Ω
Rating - Duty	40C AMB-CONT	Temp. Rise @ Rated Load	52°C
S.F. Amps		Temp. Rise @ S.F. Load	62°C
		Locked-rotor Power Factor	50.9
		Rotor inertia	0.836 lb-ft ²

Load Characteristics 230 V, 60 Hz, 1.9 HP

% of Rated Load	25	50	75	100	125	150	S.F.
Power Factor	26	41	53	63	69	73	61
Efficiency	62	73.2	76.7	77.4	76.8	75.3	78.5
Speed	891	882	873	864	852	838	848
Line amperes	5.71	6.05	6.59	7.35	8.33	9.52	8.55

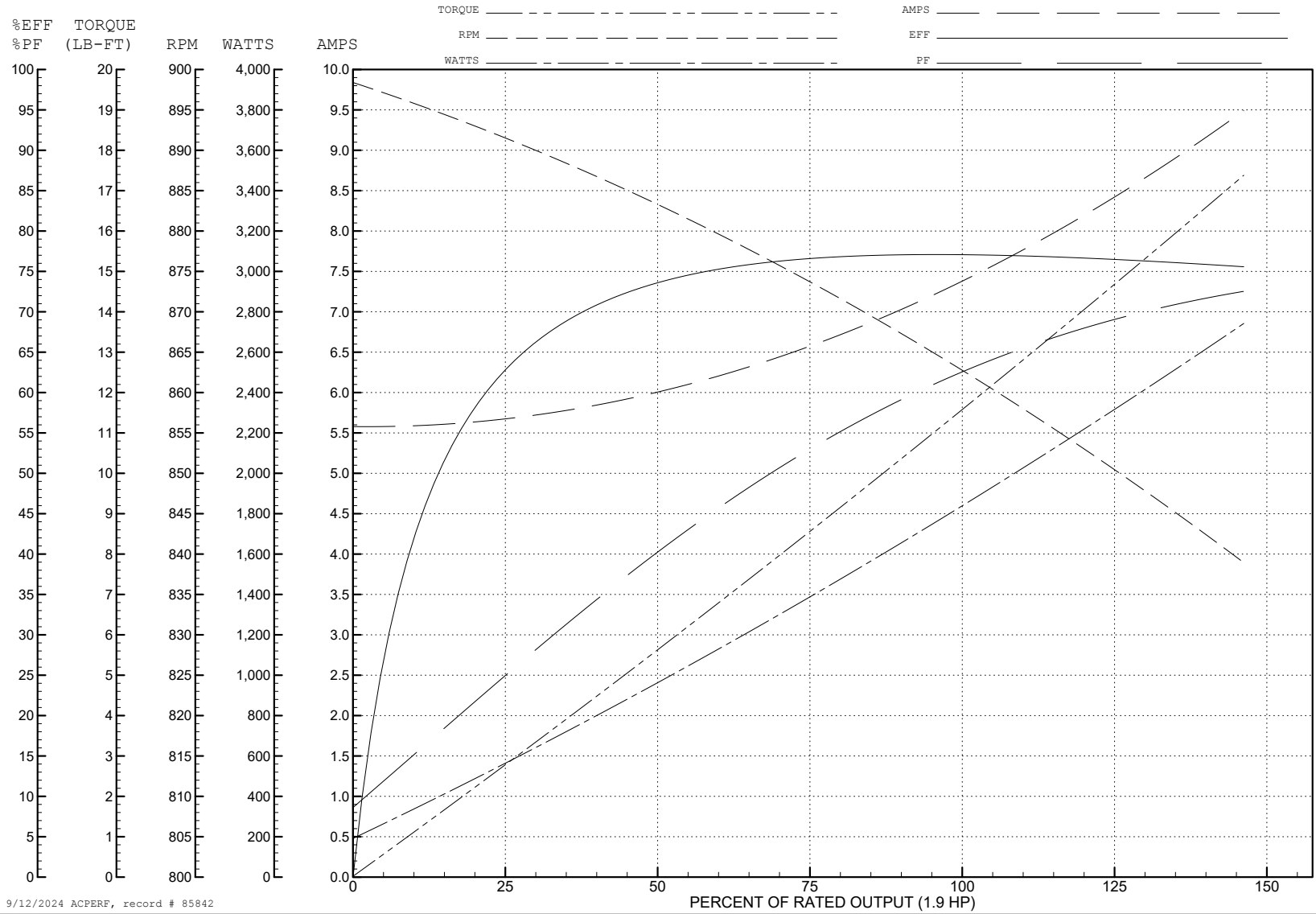
ABB Motors and Mechanical Inc.

WINDING # 37WGZ660

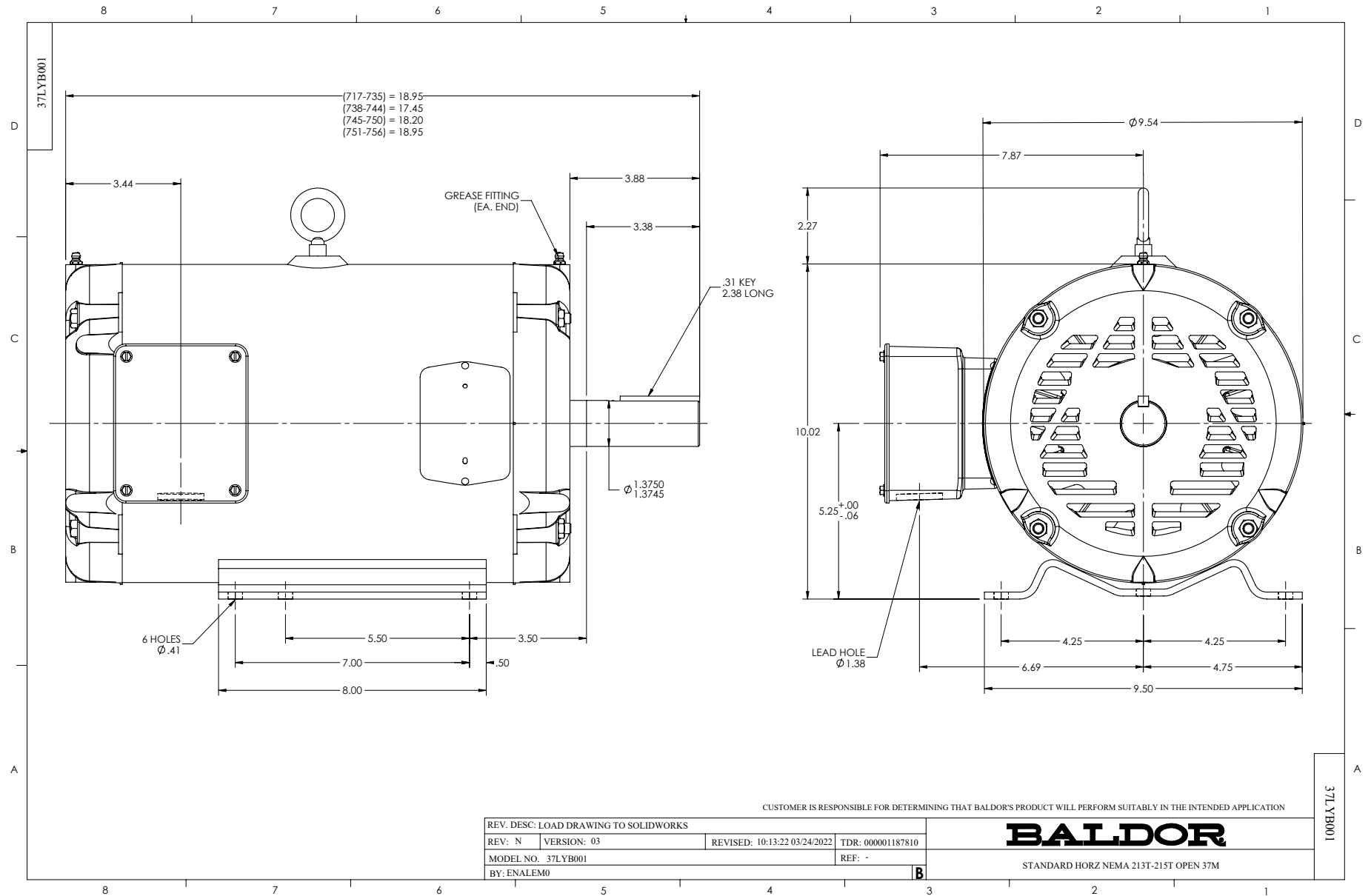
1.9 HP 3 PH 60 HZ 864 RPM 230 V 3734M

Typical performance - not guaranteed values.

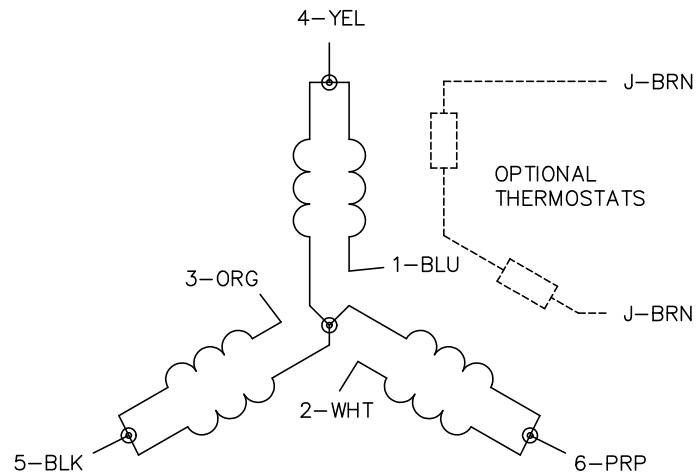
TORQUES (LB-FT): PO=31.64 PU=21.87 LR=24.3 LRA=34.15



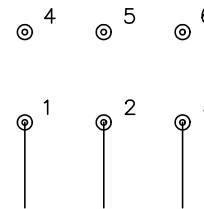
9/12/2024 ACPERF, record # 85842



CD0032

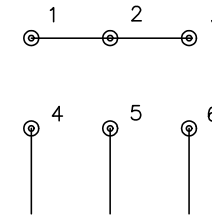


LOW SPEED
(1Y)



LINE

HIGH SPEED
(2Y)



LINE

NOTES:

1. INTERCHANGE ANY TWO LINE LEADS TO REVERSE ROTATION.
2. OPTIONAL THERMOSTATS ARE PROVIDED WHEN SPECIFIED.
3. ACTUAL NUMBER OF INTERNAL PARALLEL CIRCUITS MAY BE A MULTIPLE OF THOSE SHOWN ABOVE.
4. LEAD COLORS ARE OPTIONAL. LEADS MUST ALWAYS BE NUMBERED AS SHOWN.

CD0032

REV. DESC: REVISE TO SHOW OPTIONAL COLORS			
REV. LTR: E	BY: JLP	REVISED: 01/22/99 8:27	TDR: 0171435
CD0032		FILE: AAA00005145	MDL: -
		MTL: -	

BALDOR ELECTRIC Co.

3PH, SV, 6 LEADS, 2-SPEED 1-WINDING VARIABLE TORQUE