

BALDOR • RELIANCE

Customer information packet

M1008T

5/1.3HP, 1725/850RPM, 3PH, 60HZ, 184T, 3634M

Class - None

Division - Not Applicable

Copyright © All product information within this document is subject to ABB Motors and Mechanical Inc. copyright © protection, unless otherwise noted.

11/6/2024 5:21:58 PM

Specifications

Enclosure	OPEN
Frame	184T
Frame Material	Steel
Frequency	60.00 Hz
Haz Area Class and Group	None
Haz Area Division	Not Applicable
Motor Letter Type	Three Phase
Output @ Frequency	5.000 HP @ 60 HZ 1.300 HP @ 60 HZ
Phase	3
Synchronous Speed @ Frequency	1800 RPM @ 60 HZ
Voltage @ Frequency	230.0 V @ 60 HZ
Agency Approvals	UR CSA
Ambient Temperature	40 °C
Auxillary Box	No Auxillary Box
Auxillary Box Lead Termination	None
Base Indicator	Rigid
Bearing Grease Type	Polyrex EM (-20F +300F)
Blower	None
Current @ Voltage	13.200 A @ 230.0 V
Design Code	B
Drip Cover	No Drip Cover
Duty Rating	CONT
Electrically Isolated Bearing	Not Electrically Isolated
Feedback Device	NO FEEDBACK
Front Face Code	Standard
Front Shaft Indicator	None
Heater Indicator	No Heater
High Voltage Full Load Amps	5.0 a
Insulation Class	F
Inverter Code	Not Inverter

Part detail

Revision	Y
Type	AC
Mech. spec.	36B001
Base	
Status	PRD/A
Elec. spec.	36WGW605
Layout	36LYB001
Eff. date	05-08-2024
CD Diagram	CD0032
Poles	04/08
Leads	6#14
Proprietary	False
Created date	01-01-0001

KVA Code	J
Lifting Lugs	No Lifting Lugs
Locked Bearing Indicator	No Locked Bearing
Motor Lead Exit	Ko Box
Motor Lead Quantity/Wire Size	6 @ 14 AWG
Motor Lead Termination	Flying Leads
Motor Standards	NEMA
Motor Type	3634M
Mounting Arrangement	F1
Number of Poles	4 8
Overall Length	15.00 IN
Product Family	General Purpose
Pulley End Bearing Type	Ball
Pulley Face Code	Standard
Pulley Shaft Indicator	Standard
Rodent Screen	None
Service Factor	1.00
Shaft Diameter	1.125 IN
Shaft Extension Location	Pulley End
Shaft Ground Indicator	No Shaft Grounding
Shaft Rotation	Reversible
Shaft Slinger Indicator	No Slinger
Speed	1725 rpm 850 rpm
Speed Code	2S-1W-VT
Starting Method	Direct on line
Thermal Device - Bearing	None
Thermal Device - Winding	None
Vibration Sensor Indicator	No Vibration Sensor
Winding Thermal 1	None
Winding Thermal 2	None

Nameplate

NP1256L										
CAT.NO.	M1008T									
SPEC.	36B01W605									
HP	5/1.3									
VOLTS	230									
AMP	13.2/5									
RPM	1725/850									
FRAME	184T		HZ	60		PH	3			
SER.F.	1.15	CODE	J	DES	B	CLASS	F			
NEMA-NOM-EFF		PF								
RATING	40C AMB-CONT									
CC										
DE	6206		ODE	6205						
ENCL	OPEN	SN								

Accessories

Part number	Description	Multiplier
36-3403	C FACE KIT	A8
36EP1405A09SP	D-FLANGE KIT	

AC Induction Motor Performance Data

Record # 10804

Typical performance - not guaranteed values

Winding: 36WGW605-R001		Type: 3634M		Enclosure: OPEN	
Nameplate Data			230 V, 60 Hz: High Speed Connection		
Rated Output (HP)	5/1.3	Full Load Torque	15.3 LB-FT		
Volts	230	Start Configuration	direct on line		
Full Load Amps	13.2/5	Breakdown Torque	50 LB-FT		
R.P.M.	1725/850	Pull-up Torque	31 LB-FT		
Hz	60 Phase	3	Locked-rotor Torque	34 LB-FT	
NEMA Design Code	B KVA Code	J	Starting Current	96 A	
Service Factor (S.F.)		1	No-load Current	6.3 A	
NEMA Nom. Eff.	0 Power Factor	0	Line-line Res. @ 25°C	0.988 Ω	
Rating - Duty	40C AMB-CONT		Temp. Rise @ Rated Load	67°C	

Load Characteristics 230 V, 60 Hz, 5 HP

% of Rated Load	25	50	75	100	125	150
Power Factor	46	68	79	85	89	90
Efficiency	72.2	80.9	83	82.9	81.7	79.8
Speed	1780	1762	1743	1720	1698	1670
Line amperes	7	8.6	10.7	13.2	16.2	19.5

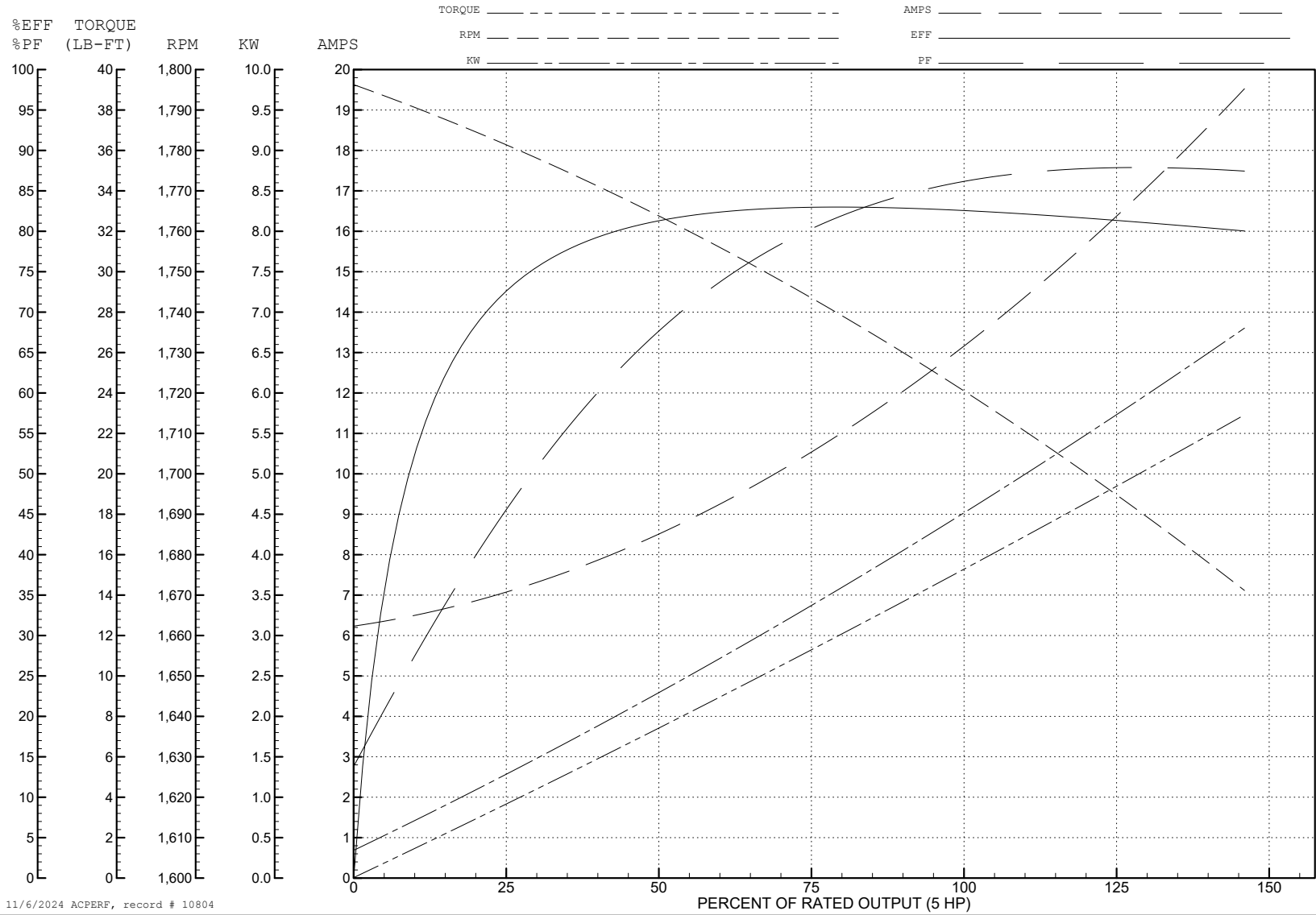
ABB Motors and Mechanical Inc.

WINDING # 36WGW605

5 HP 3 PH 60 HZ 1720 RPM 230 V 3634M

Typical performance - not guaranteed values.

TORQUES (LB-FT): PO=50 PU=31 LR=34 LRA=96



11/6/2024 ACPERF, record # 10804

AC Induction Motor Performance Data

Record # 10805

Typical performance - not guaranteed values

Winding: 36WGW605-R001		Type: 3634M		Enclosure: OPEN	
Nameplate Data			230 V, 60 Hz: Low Speed Connection		
Rated Output (HP)	5/1.3		Full Load Torque	8 LB-FT	
Volts	230		Start Configuration	direct on line	
Full Load Amps	13.2/5		Breakdown Torque	19 LB-FT	
R.P.M.	1725/850		Pull-up Torque	10 LB-FT	
Hz	60 Phase	3	Locked-rotor Torque	11.5 LB-FT	
NEMA Design Code	B KVA Code	J	Starting Current	19.2 A	
Service Factor (S.F.)	1		No-load Current	3.6 A	
NEMA Nom. Eff.	0 Power Factor	0	Line-line Res. @ 25°C	4.05 Ω	
Rating - Duty	40C AMB-CONT		Temp. Rise @ Rated Load	54°C	

Load Characteristics 230 V, 60 Hz, 1.3 HP

% of Rated Load	25	50	75	100	125	150
Power Factor	32	47	59	67	73	77
Efficiency	51.8	65.8	71	72.6	72.2	70.3
Speed	886	875	863	849	833	812
Line amperes	3.7	4	4.4	5	5.7	6.7

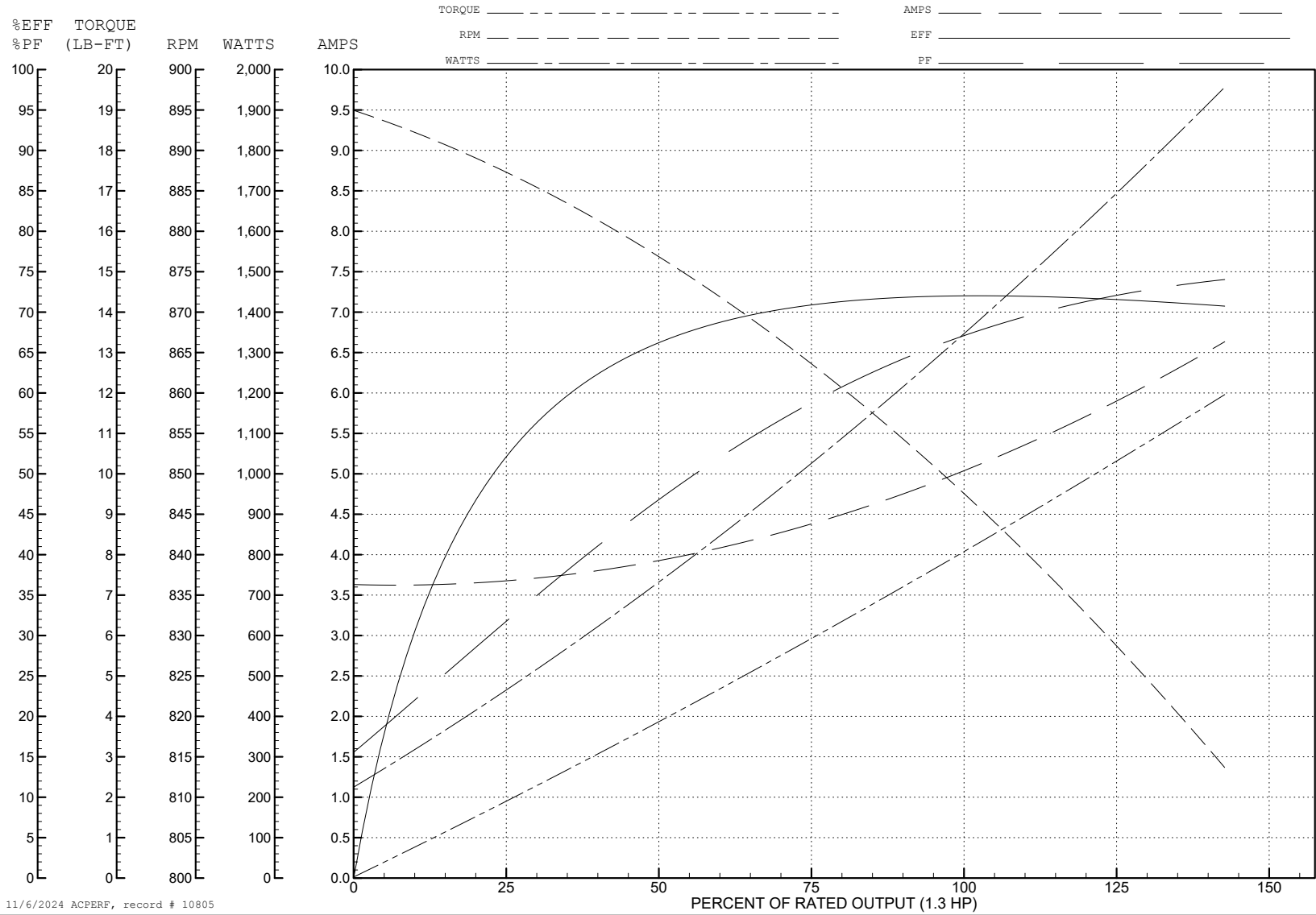
ABB Motors and Mechanical Inc.

WINDING # 36WGW605

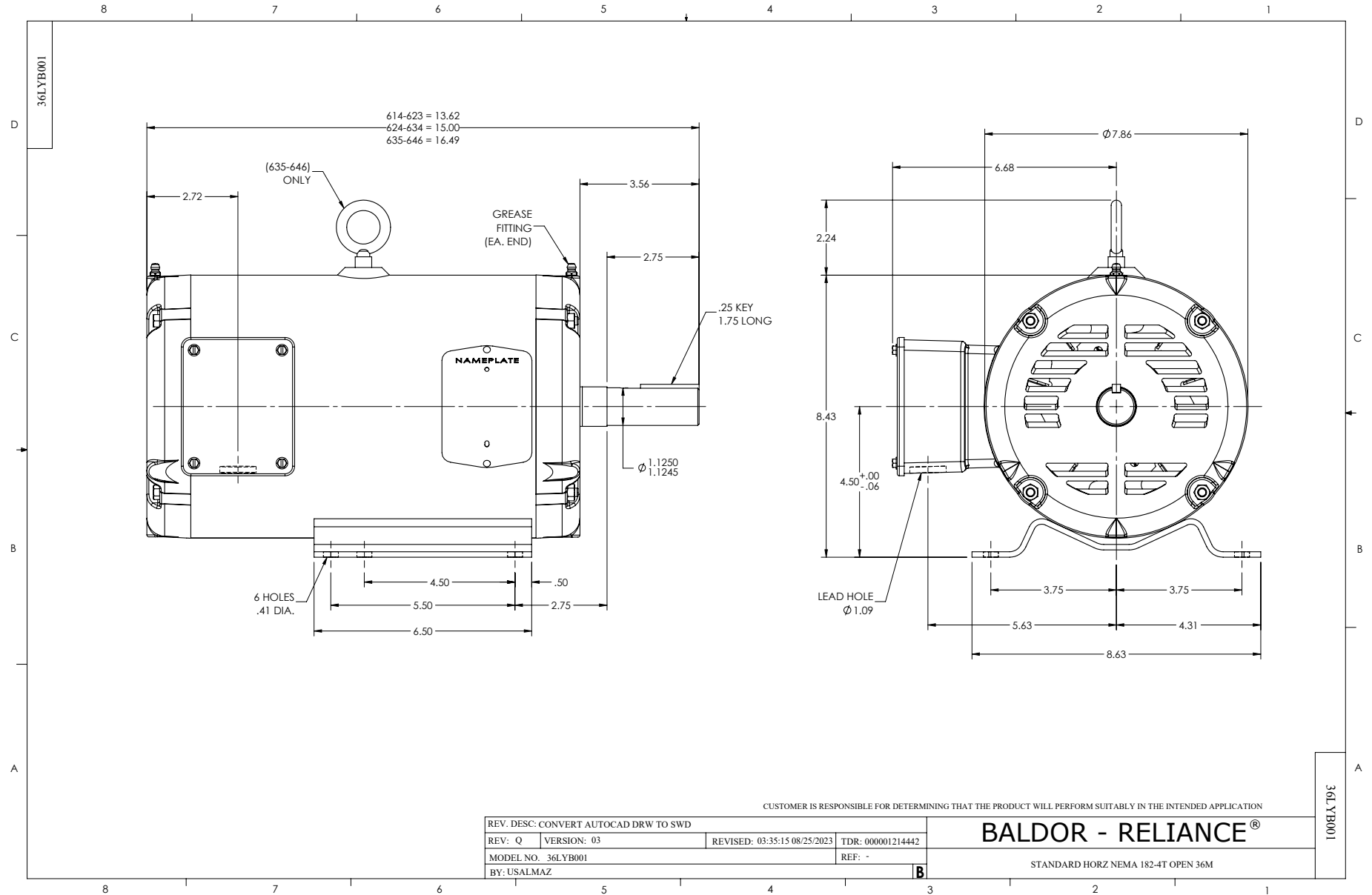
Typical performance - not guaranteed values.

1.3 HP 3 PH 60 HZ 849 RPM 230 V 3634M

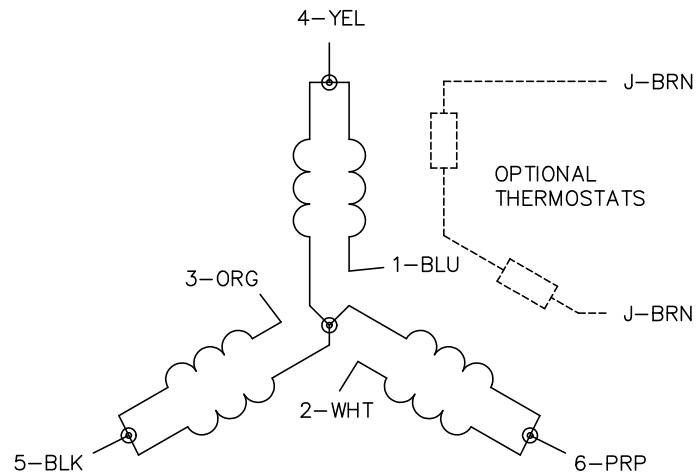
TORQUES (LB-FT): PO=19 PU=10 LR=11.5 LRA=19.2



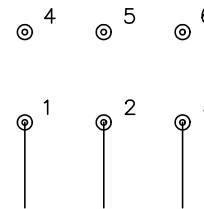
11/6/2024 ACPERF, record # 10805



CD0032

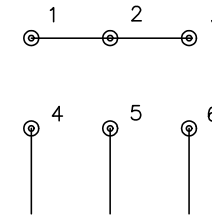


LOW SPEED
(1Y)



LINE

HIGH SPEED
(2Y)



LINE

NOTES:

1. INTERCHANGE ANY TWO LINE LEADS TO REVERSE ROTATION.
2. OPTIONAL THERMOSTATS ARE PROVIDED WHEN SPECIFIED.
3. ACTUAL NUMBER OF INTERNAL PARALLEL CIRCUITS MAY BE A MULTIPLE OF THOSE SHOWN ABOVE.
4. LEAD COLORS ARE OPTIONAL. LEADS MUST ALWAYS BE NUMBERED AS SHOWN.

CD0032

REV. DESC: REVISE TO SHOW OPTIONAL COLORS			
REV. LTR: E	BY: JLP	REVISED: 01/22/99 8:27	TDR: 0171435
CD0032		FILE: AAA00005145	MDL: -
		MTL: -	

BALDOR ELECTRIC Co.

3PH, SV, 6 LEADS, 2-SPEED 1-WINDING VARIABLE TORQUE