

BALDOR • RELIANCE

Customer information packet

M1007T

3/.75HP, 1725/850RPM, 3PH, 60HZ, 184T, 3623M

Class - None

Division - Not Applicable

Copyright © All product information within this document is subject to ABB Motors and Mechanical Inc. copyright © protection, unless otherwise noted.

7/25/2024 1:48:55 AM

Specifications

Enclosure	OPEN
Frame	184T
Frame Material	Steel
Frequency	60.00 Hz
Haz Area Class and Group	None
Haz Area Division	Not Applicable
Motor Letter Type	Three Phase
Output @ Frequency	3.000 HP @ 60 HZ .750 HP @ 60 HZ
Phase	3
Synchronous Speed @ Frequency	1800 RPM @ 60 HZ
Voltage @ Frequency	208.0 V @ 60 HZ 230.0 V @ 60 HZ
Agency Approvals	UR CSA
Ambient Temperature	40 °C
Auxillary Box	No Auxillary Box
Auxillary Box Lead Termination	None
Base Indicator	Rigid
Bearing Grease Type	Polyrex EM (-20F +300F)
Blower	None
Current @ Voltage	3.000 A @ 230.0 V 8.000 A @ 208.0 V
Design Code	B
Drip Cover	No Drip Cover
Duty Rating	CONT
Electrically Isolated Bearing	Not Electrically Isolated
Feedback Device	NO FEEDBACK
Front Face Code	Standard
Front Shaft Indicator	None
Heater Indicator	No Heater
High Voltage Full Load Amps	3.0 a

Part detail

Revision	AA
Type	AC
Mech. spec.	36B001
Base	
Status	PRD/A
Elec. spec.	36WGW039
Layout	36LYB001
Eff. date	05-08-2024
CD Diagram	CD0032
Poles	04/08
Leads	6#16
Proprietary	False
Created date	01-01-0001

Insulation Class	F
Inverter Code	Not Inverter
KVA Code	F
Lifting Lugs	No Lifting Lugs
Locked Bearing Indicator	No Locked Bearing
Motor Lead Exit	Ko Box
Motor Lead Quantity/Wire Size	6 @ 16 AWG
Motor Lead Termination	Flying Leads
Motor Standards	NEMA
Motor Type	3623M
Mounting Arrangement	F1
Number of Poles	4 8
Overall Length	13.62 IN
Product Family	General Purpose
Pulley End Bearing Type	Ball
Pulley Face Code	Standard
Pulley Shaft Indicator	Standard
Rodent Screen	None
Service Factor	1.15
Shaft Diameter	1.125 IN
Shaft Extension Location	Pulley End
Shaft Ground Indicator	No Shaft Grounding
Shaft Rotation	Reversible
Shaft Slinger Indicator	No Slinger
Speed	1725 rpm 850 rpm
Speed Code	2S-1W-VT
Starting Method	Direct on line
Thermal Device - Bearing	None
Thermal Device - Winding	None
Vibration Sensor Indicator	No Vibration Sensor
Winding Thermal 1	None
Winding Thermal 2	None

Nameplate

NP1256L									
CAT.NO.	M1007T								
SPEC.	36B01W39								
HP	3/.75								
VOLTS	208-230								
AMP	8/3								
RPM	1725/850								
FRAME	184T		HZ	60		PH	3		
SER.F.	1.15	CODE	F	DES	-	CLASS	F		
NEMA-NOM-EFF		PF							
RATING	40C AMB-CONT								
CC									
DE	6206		ODE	6205					
ENCL	OPEN	SN							

Accessories

Part number	Description	Multiplier
36-3403	C FACE KIT	A8
36EP1405A09SP	D-FLANGE KIT	

AC Induction Motor Performance Data

Record # 61308

Typical performance - not guaranteed values

Winding: 36WGW039-R003		Type: 3623M	Enclosure: OPEN	
Nameplate Data			230 V, 60 Hz: High Voltage Connection	
Rated Output (HP)	3/.75	Full Load Torque	9 LB-FT	
Volts	208-230	Start Configuration	direct on line	
Full Load Amps	8/3	Breakdown Torque	23 LB-FT	
R.P.M.	1725/850	Pull-up Torque	18 LB-FT	
Hz	60 Phase	Locked-rotor Torque	19 LB-FT	
NEMA Design Code	- KVA Code	Starting Current	41 A	
Service Factor (S.F.)	1.15	No-load Current	2.8 A	
NEMA Nom. Eff.	0 Power Factor	Line-line Res. @ 25°C	2.11 Ω	
Rating - Duty	40C AMB-CONT	Temp. Rise @ Rated Load	56°C	
S.F. Amps		Temp. Rise @ S.F. Load	71°C	
		Locked-rotor Power Factor	67.1	
		Rotor inertia	0.216 LB-FT ²	

Load Characteristics 230 V, 60 Hz, 3 HP

% of Rated Load	25	50	75	100	125	150	S.F.
Power Factor	51	73	81	85	87	87	86
Efficiency	79	83	82	79	75	71	76.6
Speed	1769	1740	1705	1670	1619	1568	1639
Line amperes	3.5	4.6	6.2	8	10	12.2	9.2

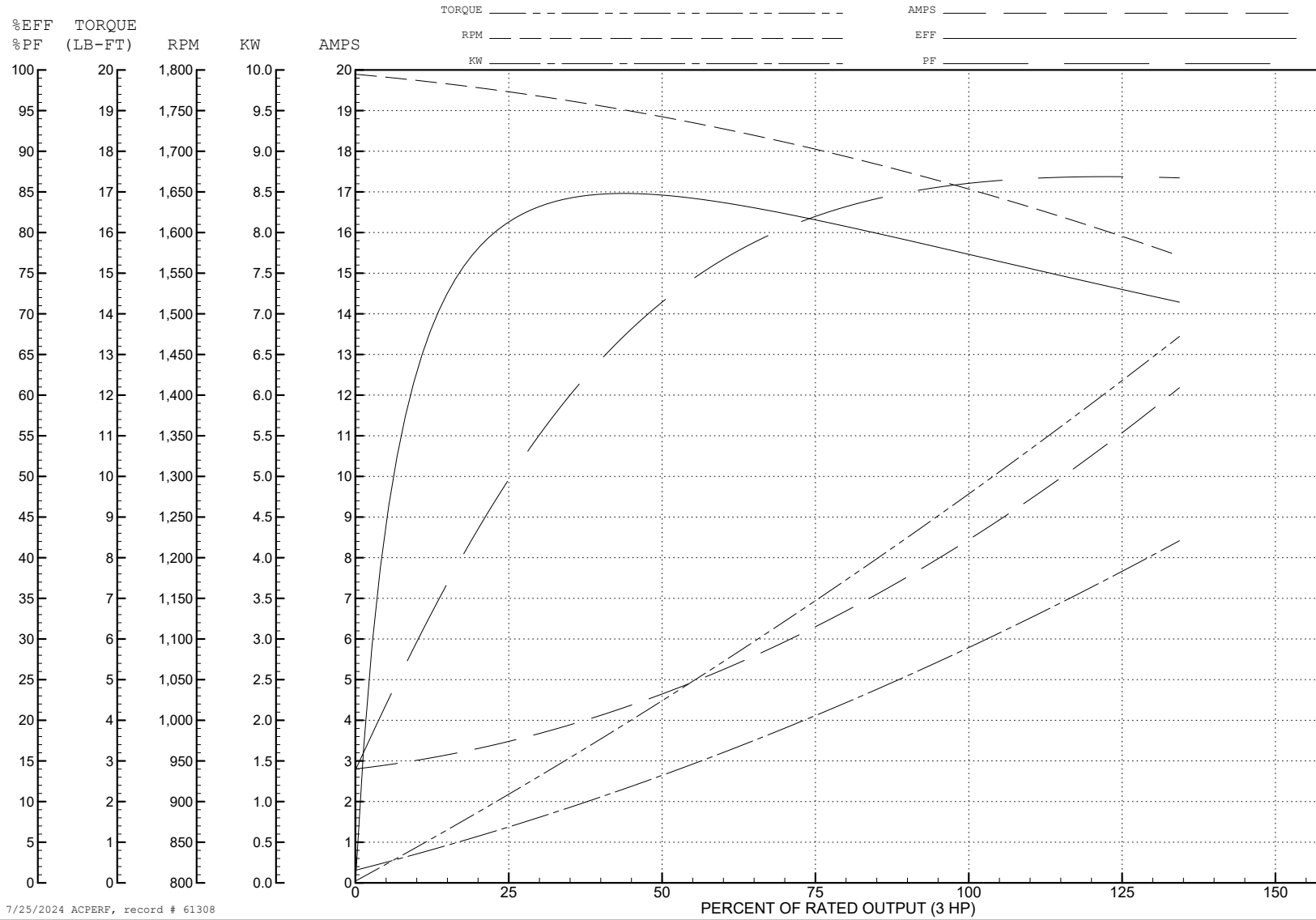
ABB Motors and Mechanical Inc.

WINDING # 36WGW039

3 HP 3 PH 60 HZ 1670 RPM 230 V 3623M

Typical performance - not guaranteed values.

TORQUES (LB-FT): PO=23 PU=18 LR=19 LRA=41



7/25/2024 ACPERF, record # 61308

AC Induction Motor Performance Data

Record # 61309

Typical performance - not guaranteed values

Winding: 36WGW039-R003			Type: 3623M			Enclosure: OPEN		
Nameplate Data						230 V, 60 Hz: Low Speed Connection		
Rated Output (HP)	3/.75		Full Load Torque	4.6 LB-FT				
Volts	208-230		Start Configuration	direct on line				
Full Load Amps	8/3		Breakdown Torque	8.5 LB-FT				
R.P.M.	1725/850		Pull-up Torque	6 LB-FT				
Hz	60 Phase	3	Locked-rotor Torque	6.2 LB-FT				
NEMA Design Code	- KVA Code	F	Starting Current	9.2 A				
Service Factor (S.F.)	1.15		No-load Current	1.9 A				
NEMA Nom. Eff.	0 Power Factor	0	Line-line Res. @ 25°C	8.46 Ω				
Rating - Duty	40C AMB-CONT		Temp. Rise @ Rated Load	37°C				
S.F. Amps			Temp. Rise @ S.F. Load	45°C				
			Locked-rotor Power Factor	57.1				
			Rotor inertia	0.216 LB-FT ²				

Load Characteristics 230 V, 60 Hz, 0.75 HP

% of Rated Load	25	50	75	100	125	S.F.
Power Factor	30	47	59	65	72	69
Efficiency	60.1	70.1	72	71	67	68.6
Speed	887	875	860	842	820	829
Line amperes	2	2.2	2.5	3	3.5	3.3

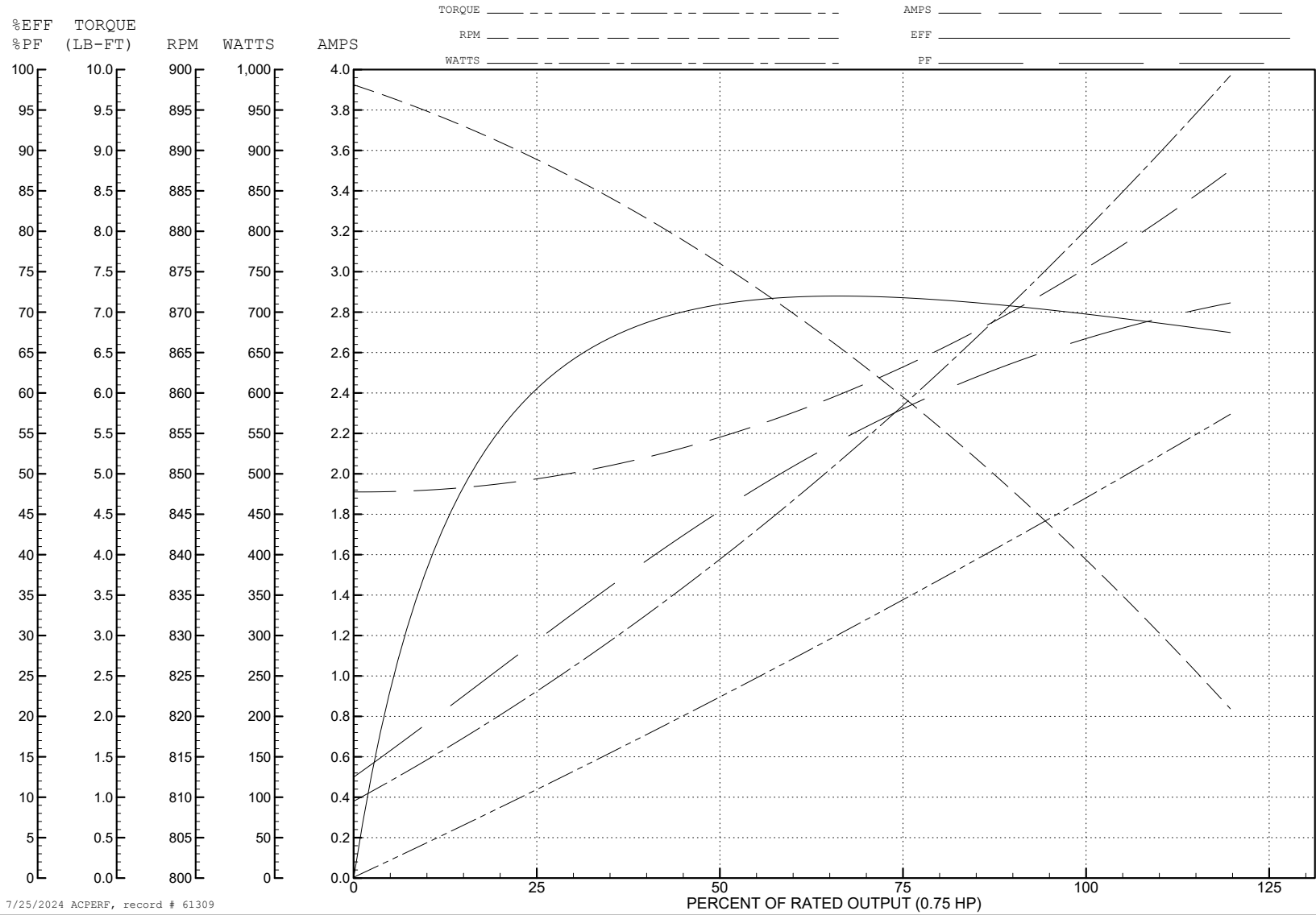
ABB Motors and Mechanical Inc.

WINDING # 36WGW039

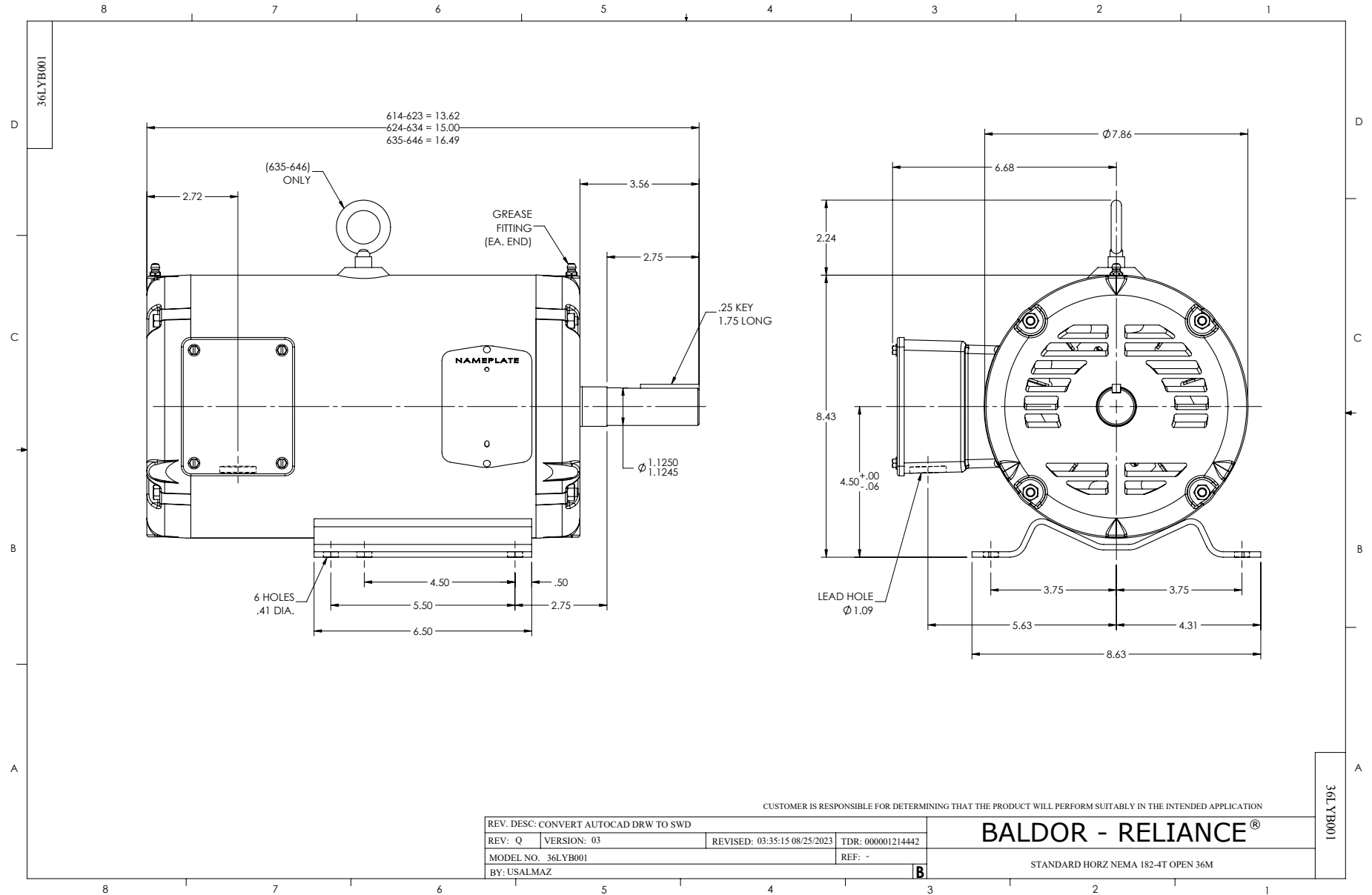
0.75 HP 3 PH 60 HZ 842 RPM 230 V 3623M

Typical performance - not guaranteed values.

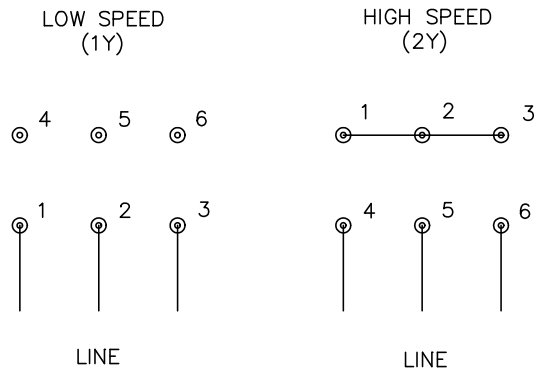
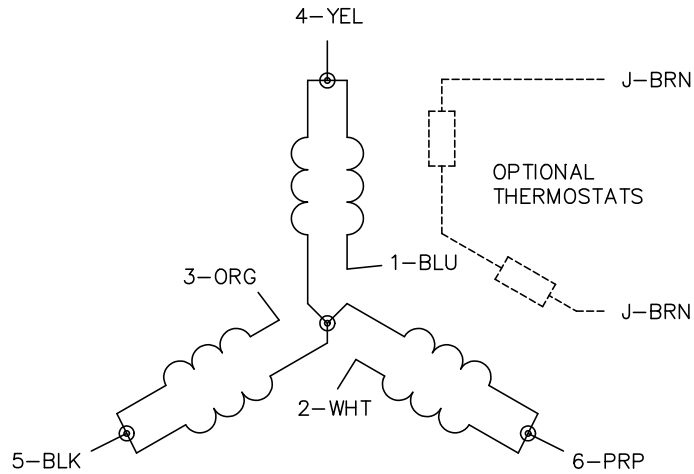
TORQUES (LB-FT): PO=8.5 PU=6 LR=6.2 LRA=9.2



7/25/2024 ACPERF, record # 61309



CD0032



- NOTES:
1. INTERCHANGE ANY TWO LINE LEADS TO REVERSE ROTATION.
 2. OPTIONAL THERMOSTATS ARE PROVIDED WHEN SPECIFIED.
 3. ACTUAL NUMBER OF INTERNAL PARALLEL CIRCUITS MAY BE A MULTIPLE OF THOSE SHOWN ABOVE.
 4. LEAD COLORS ARE OPTIONAL. LEADS MUST ALWAYS BE NUMBERED AS SHOWN.

CD0032

REV. DESC: REVISE TO SHOW OPTIONAL COLORS			
REV. LTR: E	BY: JLP	REVISED: 01/22/99 8:27	TDR: 0171435
CD0032		FILE: AAA00005145	MDL: -
		MTL: -	

BALDOR ELECTRIC Co.

3PH, SV, 6 LEADS, 2-SPEED 1-WINDING VARIABLE TORQUE