



---

# Customer information packet

## M1006T

2-.5HP, 1730-865RPM, 3PH, 60HZ, 145T, 3528M, O

Class - None

Division - Not Applicable

## Specifications

Enclosure	OPEN
Frame	145T
Frame Material	Steel
Frequency	60.00 Hz
Haz Area Class and Group	None
Haz Area Division	Not Applicable
Motor Letter Type	Three Phase
Output @ Frequency	.500 HP @ 60 HZ 2.000 HP @ 60 HZ
Phase	3
Synchronous Speed @ Frequency	900 RPM @ 60 HZ
Voltage @ Frequency	230.0 V @ 60 HZ 208.0 V @ 60 HZ
Agency Approvals	CSA UR
Ambient Temperature	40 °C
Auxillary Box	No Auxillary Box
Auxillary Box Lead Termination	None
Base Indicator	Rigid
Bearing Grease Type	Polyrex EM (-20F +300F)
Blower	None
Current @ Voltage	6.490 A @ 208.0 V 2.740 A @ 230.0 V
Design Code	B
Drip Cover	No Drip Cover
Duty Rating	CONT
Electrically Isolated Bearing	Not Electrically Isolated
Feedback Device	NO FEEDBACK
Front Shaft Indicator	None
Heater Indicator	No Heater
High Voltage Full Load Amps	2.7 a
Insulation Class	F

## Part detail

Revision	C
Type	AC
Mech. spec.	35BB001
Base	
Status	PRD/A
Elec. spec.	35WGG364
Layout	35LYBB001
Eff. date	07-02-2024
CD Diagram	CD0032
Poles	04/08
Leads	6#18
Proprietary	False
Created date	02-23-2023

Inverter Code	Not Inverter
KVA Code	K
Lifting Lugs	No Lifting Lugs
Locked Bearing Indicator	No Locked Bearing
Motor Lead Quantity/Wire Size	6 @ 18 AWG
Motor Lead Termination	Flying Leads
Motor Standards	NEMA
Motor Type	3528M
Mounting Arrangement	F1
Number of Poles	4 8
Overall Length	12.13 IN
Product Family	General Purpose
Pulley End Bearing Type	Ball
Pulley Face Code	Standard
Pulley Shaft Indicator	Standard
Rodent Screen	None
Service Factor	1.15
Shaft Diameter	0.875 IN
Shaft Ground Indicator	No Shaft Grounding
Shaft Rotation	Reversible
Shaft Slinger Indicator	No Slinger
Speed	1730 rpm 865 rpm
Speed Code	2S-1W-VT
Starting Method	Direct on line
Thermal Device - Bearing	None
Thermal Device - Winding	None
Vibration Sensor Indicator	No Vibration Sensor
Winding Thermal 1	None
Winding Thermal 2	None

**Nameplate**

<b>NP1256L</b>									
<b>CAT.NO.</b>	M1006T								
<b>SPEC.</b>	35BB001G364G1								
<b>HP</b>	2-.5								
<b>VOLTS</b>	208-230								
<b>AMP</b>	6.49-2.74								
<b>RPM</b>	1730-865								
<b>FRAME</b>	145T		<b>HZ</b>	60		<b>PH</b>	3		
<b>SER.F.</b>	1.15	<b>CODE</b>	K	<b>DES</b>	B	<b>CLASS</b>	F		
<b>NEMA-NOM-EFF</b>		<b>PF</b>							
<b>RATING</b>	40C AMB-CONT								
<b>CC</b>									
<b>DE</b>	6205		<b>ODE</b>	6203					
<b>ENCL</b>	OPEN	<b>SN</b>							
	SFA 7.11-7.07								

**Accessories**

<b>Part number</b>	<b>Description</b>	<b>Multiplier</b>
35-8764	C FACE KIT	A8
35EP1604A01SP	D-FLANGE KIT	A8

**AC Induction Motor Performance Data**

Record # 87878

Typical performance - not guaranteed values

Winding: 35WGG364-R001			Type: 3528M	Enclosure: TEFC	
<b>Nameplate Data</b>			<b>230 V, 60 Hz: High Speed Connection</b>		
Rated Output (HP)	2/.5		Full Load Torque	6.01 LB-FT	
Volts	208-230		Start Configuration	direct on line	
Full Load Amps	6.49/2.74		Breakdown Torque	20.99 LB-FT	
R.P.M.	1730/865		Pull-up Torque	15.62 LB-FT	
Hz	60 Phase	3	Locked-rotor Torque	16.73 LB-FT	
NEMA Design Code	B KVA Code	K	Starting Current	40.21 A	
Service Factor (S.F.)	1.15		No-load Current	4.12 A	
NEMA Nom. Eff.	0 Power Factor	0	Line-line Res. @ 25°C	3 Ω	
Rating - Duty	40C AMB-CONT		Temp. Rise @ Rated Load		
			Locked-rotor Power Factor	81.9	
			Rotor inertia	0.202 lb-ft <sup>2</sup>	

**Load Characteristics 230 V, 60 Hz, 2 HP**

% of Rated Load	25	50	75	100	125	150	S.F.
Power Factor	31	49	64	70	77	83	74
Efficiency	71	80.4	82.1	81.1	79.7	77.9	80.3
Speed	1753	1768	1750	1729	1709	1690	1717
Line amperes	4.27	4.81	5.33	6.49	7.46	8.45	7.07

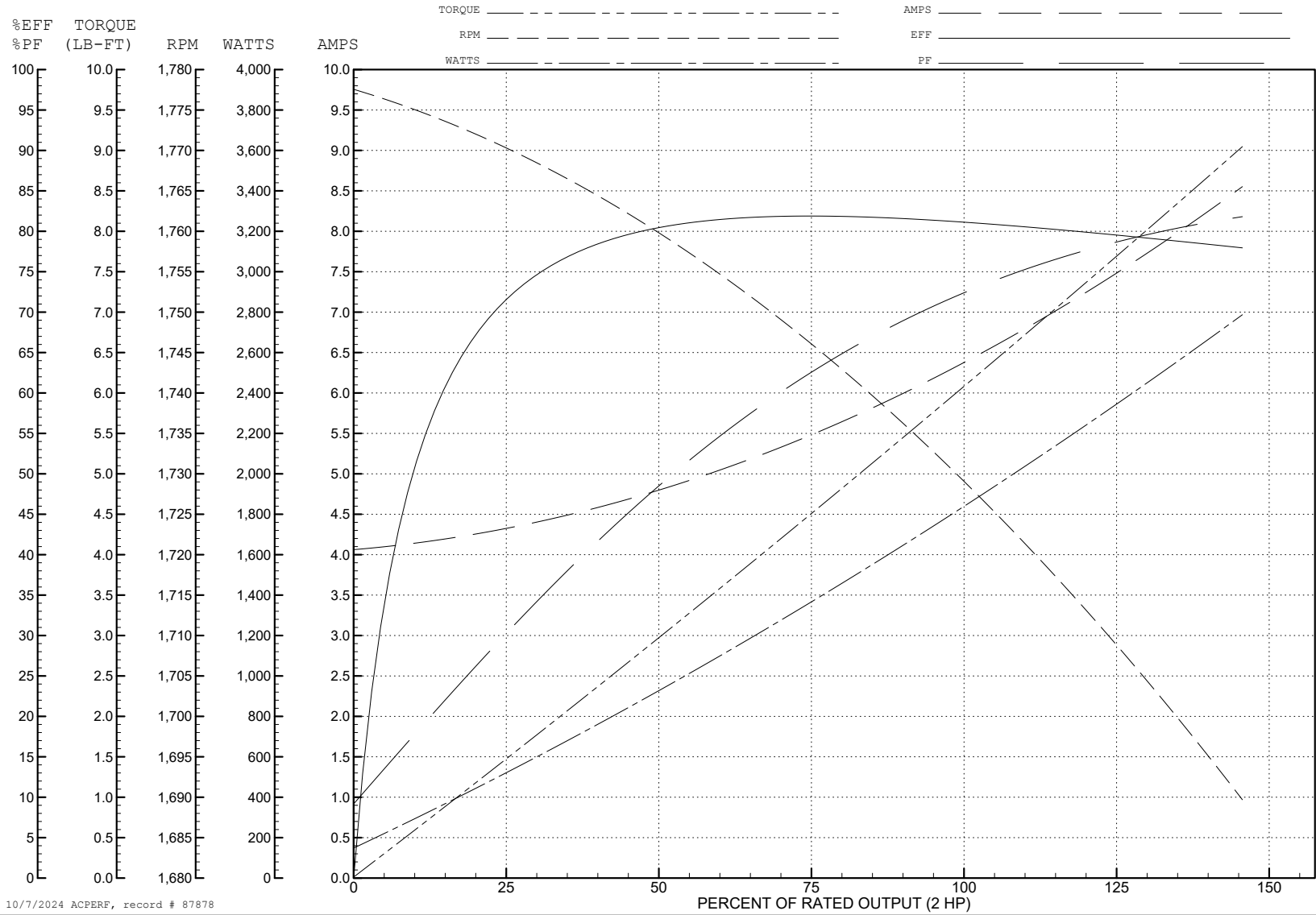
ABB Motors and Mechanical Inc.

WINDING # 35WGG364

Typical performance - not guaranteed values.

2 HP 3 PH 60 HZ 1729 RPM 230 V 3528M

TORQUES (LB-FT): PO=20.99 PU=15.62 LR=16.73 LRA=40.21



10/7/2024 ACPERF, record # 87878

**AC Induction Motor Performance Data**

Record # 87879

Typical performance - not guaranteed values

Winding: 35WGG364-R001			Type: 3528M	Enclosure: TEFC	
<b>Nameplate Data</b>			<b>230 V, 60 Hz: Low Speed Connection</b>		
Rated Output (HP)	2/.5		Full Load Torque	3.02 LB-FT	
Volts	208-230		Start Configuration	direct on line	
Full Load Amps	6.49/2.74		Breakdown Torque	10.7 LB-FT	
R.P.M.	1730/865		Pull-up Torque	5.52 LB-FT	
Hz	60 Phase	3	Locked-rotor Torque	7.67 LB-FT	
NEMA Design Code	B KVA Code	K	Starting Current	10.4 A	
Service Factor (S.F.)	1.15		No-load Current	2.47 A	
NEMA Nom. Eff.	0 Power Factor	0	Line-line Res. @ 25°C	12 Ω	
Rating - Duty	40C AMB-CONT		Temp. Rise @ Rated Load		
			Locked-rotor Power Factor	81.9	
			Rotor inertia	0.202 lb-ft <sup>2</sup>	

**Load Characteristics 230 V, 60 Hz, 0.5 HP**

% of Rated Load	25	50	75	100	125	150	S.F.
Power Factor	24	34	43	52	59	66	56
Efficiency	39.5	55.5	63.4	67.5	69.4	69.9	68.6
Speed	892.2	885.3	877.8	869.6	860.6	850.5	864
Line amperes	2.47	2.5	2.57	2.69	2.84	3.05	2.78



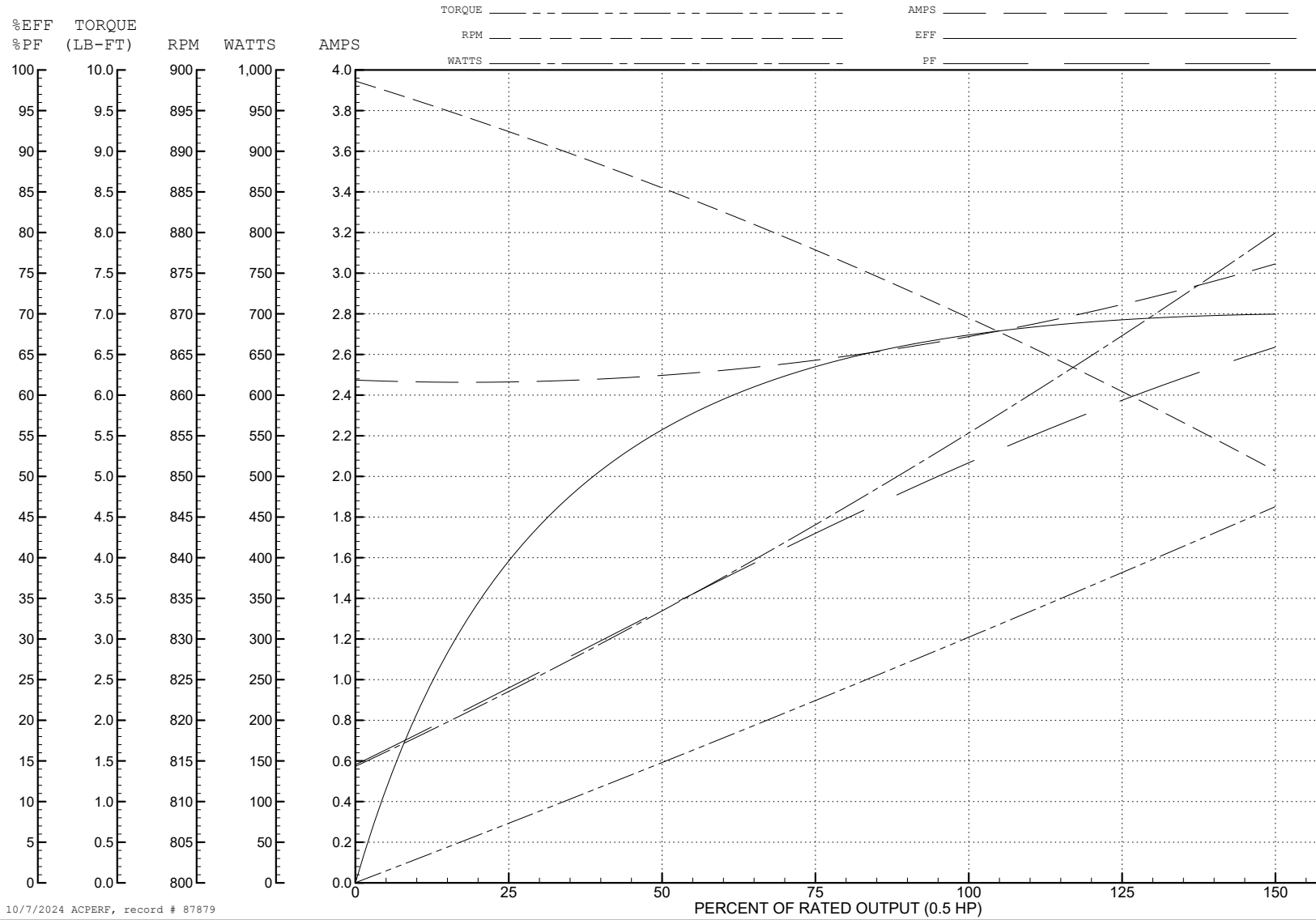
ABB Motors and Mechanical Inc.

WINDING # 35WGG364

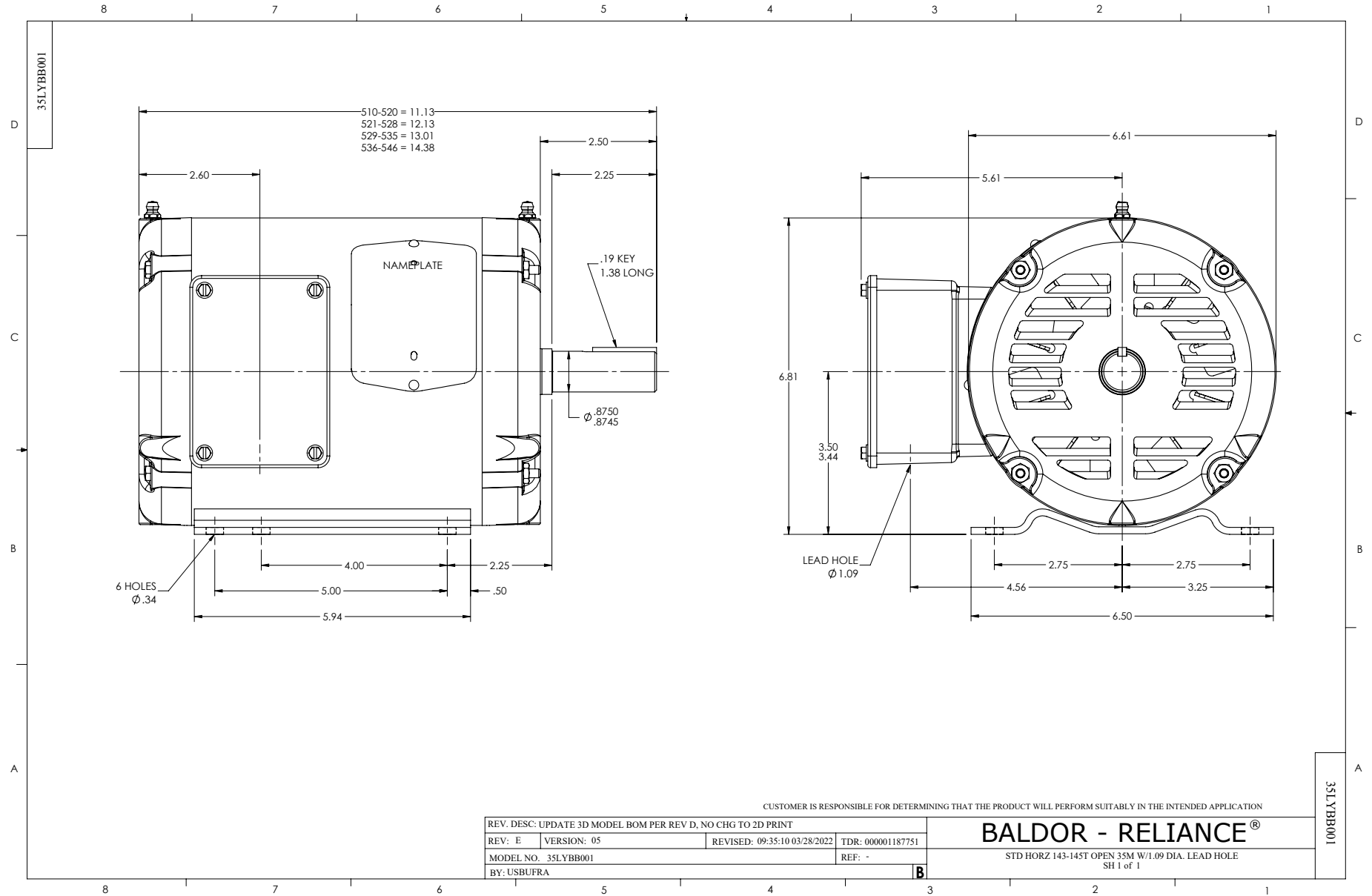
Typical performance - not guaranteed values.

0.5 HP 3 PH 60 HZ 869.6 RPM 230 V 3528M

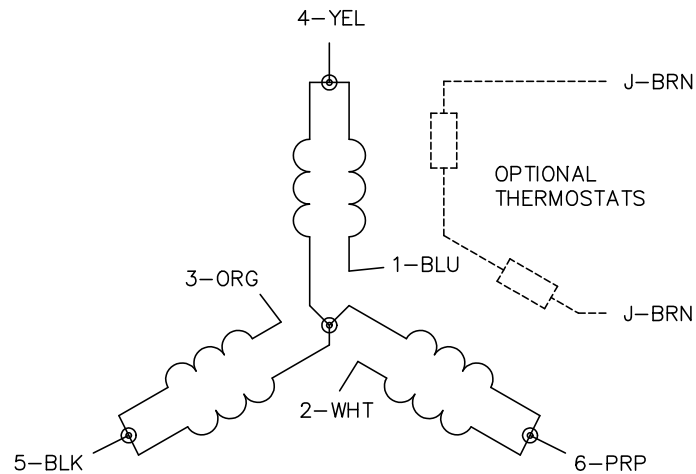
TORQUES (LB-FT): PO=10.7 PU=5.52 LR=7.67 LRA=10.4



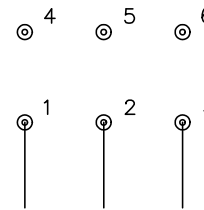
10/7/2024 ACPERF, record # 87879



CD0032

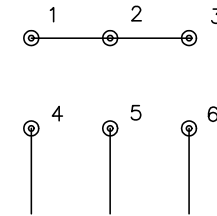


LOW SPEED  
(1Y)



LINE

HIGH SPEED  
(2Y)



LINE

NOTES:

1. INTERCHANGE ANY TWO LINE LEADS TO REVERSE ROTATION.
2. OPTIONAL THERMOSTATS ARE PROVIDED WHEN SPECIFIED.
3. ACTUAL NUMBER OF INTERNAL PARALLEL CIRCUITS MAY BE A MULTIPLE OF THOSE SHOWN ABOVE.
4. LEAD COLORS ARE OPTIONAL. LEADS MUST ALWAYS BE NUMBERED AS SHOWN.

CD0032

REV. DESC: REVISE TO SHOW OPTIONAL COLORS			
REV. LTR: E	BY: JLP	REVISED: 01/22/99 8:27	TDR: 0171435
CD0032		FILE: AAA00005145	MDL: -
		MTL: -	

**BALDOR ELECTRIC Co.**

3PH, SV, 6 LEADS, 2-SPEED 1-WINDING VARIABLE TORQUE