



---

# Customer information packet

## M1005T

1.5-.38HP, 1720-855RPM, 3PH, 60HZ, 145T, 3524

Class - None

Division - Not Applicable

## Specifications

Enclosure	OPEN
Frame	145T
Frame Material	Steel
Frequency	60.00 Hz
Haz Area Class and Group	None
Haz Area Division	Not Applicable
Motor Letter Type	Three Phase
Output @ Frequency	.380 HP @ 60 HZ 1.500 HP @ 60 HZ
Phase	3
Synchronous Speed @ Frequency	900 RPM @ 60 HZ
Voltage @ Frequency	230.0 V @ 60 HZ 208.0 V @ 60 HZ
Agency Approvals	CSA UR
Ambient Temperature	40 °C
Auxillary Box	No Auxillary Box
Auxillary Box Lead Termination	None
Base Indicator	Rigid
Bearing Grease Type	Polyrex EM (-20F +300F)
Blower	None
Current @ Voltage	4.570 A @ 208.0 V 2.120 A @ 230.0 V
Design Code	B
Drip Cover	No Drip Cover
Duty Rating	CONT
Electrically Isolated Bearing	Not Electrically Isolated
Feedback Device	NO FEEDBACK
Front Shaft Indicator	None
Heater Indicator	No Heater
High Voltage Full Load Amps	2.1 a
Insulation Class	F

## Part detail

Revision	C
Type	AC
Mech. spec.	35BB001
Base	
Status	PRD/A
Elec. spec.	35WGG353
Layout	35LYBB001
Eff. date	07-02-2024
CD Diagram	CD0032
Poles	04/08
Leads	6#18
Proprietary	False
Created date	02-23-2023

<b>Inverter Code</b>	Not Inverter
<b>KVA Code</b>	J
<b>Lifting Lugs</b>	No Lifting Lugs
<b>Locked Bearing Indicator</b>	No Locked Bearing
<b>Motor Lead Quantity/Wire Size</b>	6 @ 18 AWG
<b>Motor Lead Termination</b>	Flying Leads
<b>Motor Standards</b>	NEMA
<b>Motor Type</b>	3524M
<b>Mounting Arrangement</b>	F1
<b>Number of Poles</b>	4 8
<b>Overall Length</b>	12.13 IN
<b>Product Family</b>	General Purpose
<b>Pulley End Bearing Type</b>	Ball
<b>Pulley Face Code</b>	Standard
<b>Pulley Shaft Indicator</b>	Standard
<b>Rodent Screen</b>	None
<b>Service Factor</b>	1.15
<b>Shaft Diameter</b>	0.875 IN
<b>Shaft Ground Indicator</b>	No Shaft Grounding
<b>Shaft Rotation</b>	Reversible
<b>Shaft Slinger Indicator</b>	No Slinger
<b>Speed</b>	1720 rpm 855 rpm
<b>Speed Code</b>	2S-1W-VT
<b>Starting Method</b>	Direct on line
<b>Thermal Device - Bearing</b>	None
<b>Thermal Device - Winding</b>	None
<b>Vibration Sensor Indicator</b>	No Vibration Sensor
<b>Winding Thermal 1</b>	None
<b>Winding Thermal 2</b>	None

**Nameplate**

<b>NP1256L</b>									
<b>CAT.NO.</b>	M1005T								
<b>SPEC.</b>	35BB001G353								
<b>HP</b>	1.5-.38								
<b>VOLTS</b>	208-230								
<b>AMP</b>	4.57-2.12								
<b>RPM</b>	1720-855								
<b>FRAME</b>	145T		<b>HZ</b>	60		<b>PH</b>	3		
<b>SER.F.</b>	1.15	<b>CODE</b>	J	<b>DES</b>	B	<b>CLASS</b>	F		
<b>NEMA-NOM-EFF</b>		<b>PF</b>							
<b>RATING</b>	40C AMB-CONT								
<b>CC</b>									
<b>DE</b>	6205		<b>ODE</b>	6203					
<b>ENCL</b>	OPEN	<b>SN</b>							
	SFA 5.42-5.1								

**Accessories**

<b>Part number</b>	<b>Description</b>	<b>Multiplier</b>
35-8764	C FACE KIT	A8
35EP1604A01SP	D-FLANGE KIT	A8

## AC Induction Motor Performance Data

Record # 87854

Typical performance - not guaranteed values

Winding: 35WGG353-R001			Type: 3524M			Enclosure: OPEN		
<b>Nameplate Data</b>						<b>230 V, 60 Hz: High Speed Connection</b>		
Rated Output (HP)	1.5/.38		Full Load Torque	4.51 LB-FT				
Volts	208-230		Start Configuration	direct on line				
Full Load Amps	4.57/2.12		Breakdown Torque	15.58 LB-FT				
R.P.M.	1720/855		Pull-up Torque	10.25 LB-FT				
Hz	60	Phase	3	Locked-rotor Torque	12.53 LB-FT			
NEMA Design Code	B		KVA Code	J	Starting Current	26.74 A		
Service Factor (S.F.)	1.15		No-load Current	2.72 A				
NEMA Nom. Eff.	0	Power Factor	0	Line-line Res. @ 25°C	4.51 Ω			
Rating - Duty	40C AMB-CONT		Temp. Rise @ Rated Load	43°C				
S.F. Amps			Temp. Rise @ S.F. Load	53°C				
			Locked-rotor Power Factor	83.2				
			Rotor inertia	0.173 lb-ft <sup>2</sup>				

## Load Characteristics 230 V, 60 Hz, 1.5 HP

% of Rated Load	25	50	75	100	125	150	S.F.
Power Factor	35	55	69	76	81	85	79
Efficiency	71.7	79.5	80.9	79.3	77	73.7	77.9
Speed	1783	1764	1744	1720	1695	1664	1705
Line amperes	2.88	3.24	3.79	4.57	5.45	6.43	5.1

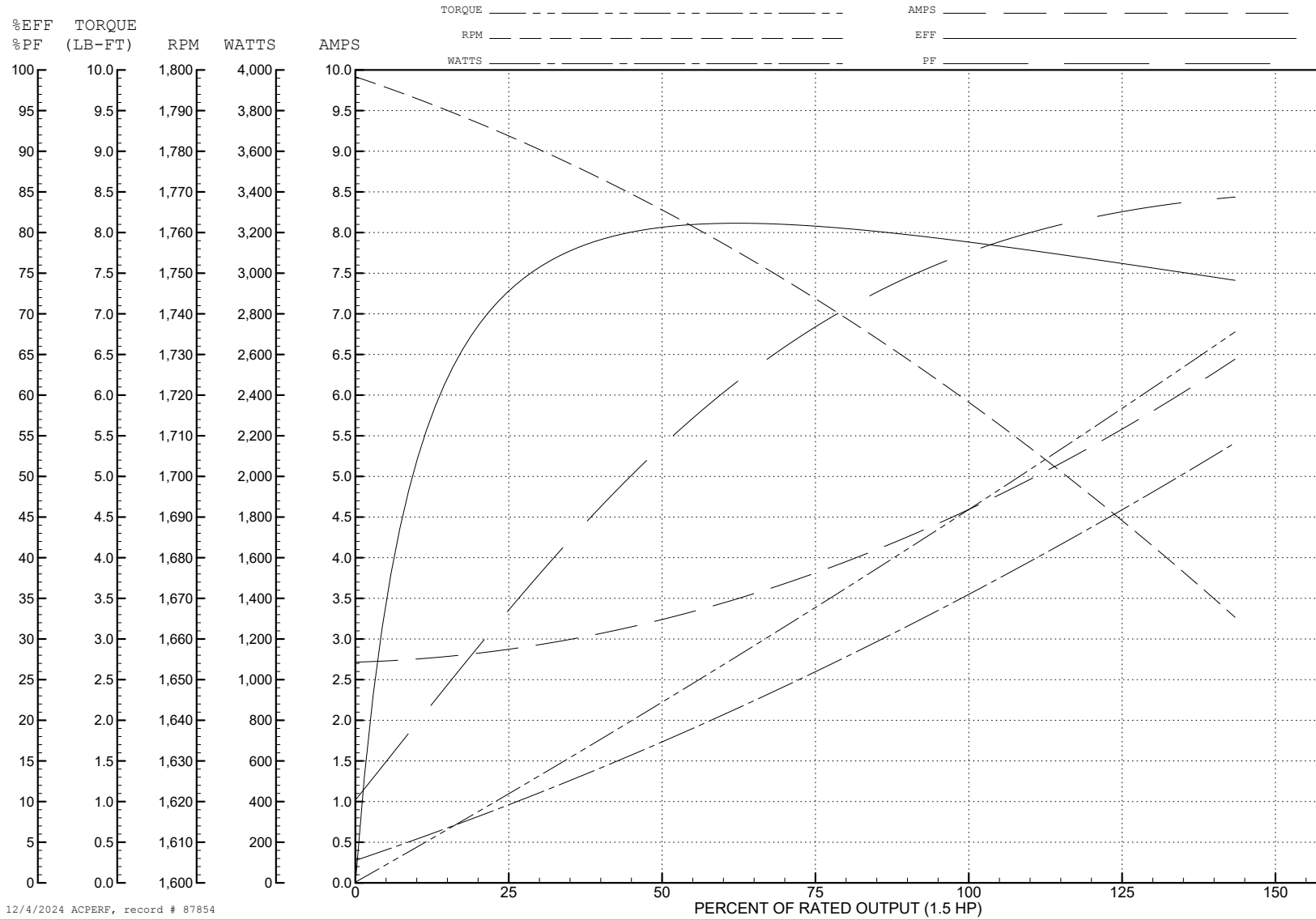
ABB Motors and Mechanical Inc.

WINDING # 35WGG353

Typical performance - not guaranteed values.

1.5 HP 3 PH 60 HZ 1720 RPM 230 V 3524M

TORQUES (LB-FT): PO=15.58 PU=10.25 LR=12.53 LRA=26.74



12/4/2024 ACPERF, record # 87854

**AC Induction Motor Performance Data**

Record # 87855

Typical performance - not guaranteed values

Winding: 35WGG353-R001			Type: 3524M			Enclosure: OPEN		
<b>Nameplate Data</b>						<b>230 V, 60 Hz: Low Speed Connection</b>		
Rated Output (HP)	1.5/.38		Full Load Torque	2.31 LB-FT				
Volts	208-230		Start Configuration	direct on line				
Full Load Amps	4.57/2.12		Breakdown Torque	7.41 LB-FT				
R.P.M.	1720/855		Pull-up Torque	4.14 LB-FT				
Hz	60	Phase	3	Locked-rotor Torque	5.48 LB-FT			
NEMA Design Code	B		KVA Code	J	Starting Current	7.27 A		
Service Factor (S.F.)	1.15		No-load Current	1.74 A				
NEMA Nom. Eff.	0	Power Factor	0	Line-line Res. @ 25°C	18 Ω			
Rating - Duty	40C AMB-CONT		Temp. Rise @ Rated Load					
			Locked-rotor Power Factor	83.2				
			Rotor inertia	0.173 lb-ft <sup>2</sup>				

**Load Characteristics 230 V, 60 Hz, 0.38 HP**

% of Rated Load	25	50	75	100	125	150	S.F.
Power Factor	26	36	46	56	63	70	60
Efficiency	39.6	55.5	63.1	66.9	68.4	68.4	67.8
Speed	891.2	883.4	874.9	865.5	855	842.8	859
Line amperes	1.73	1.76	1.82	1.92	2.05	2.23	2



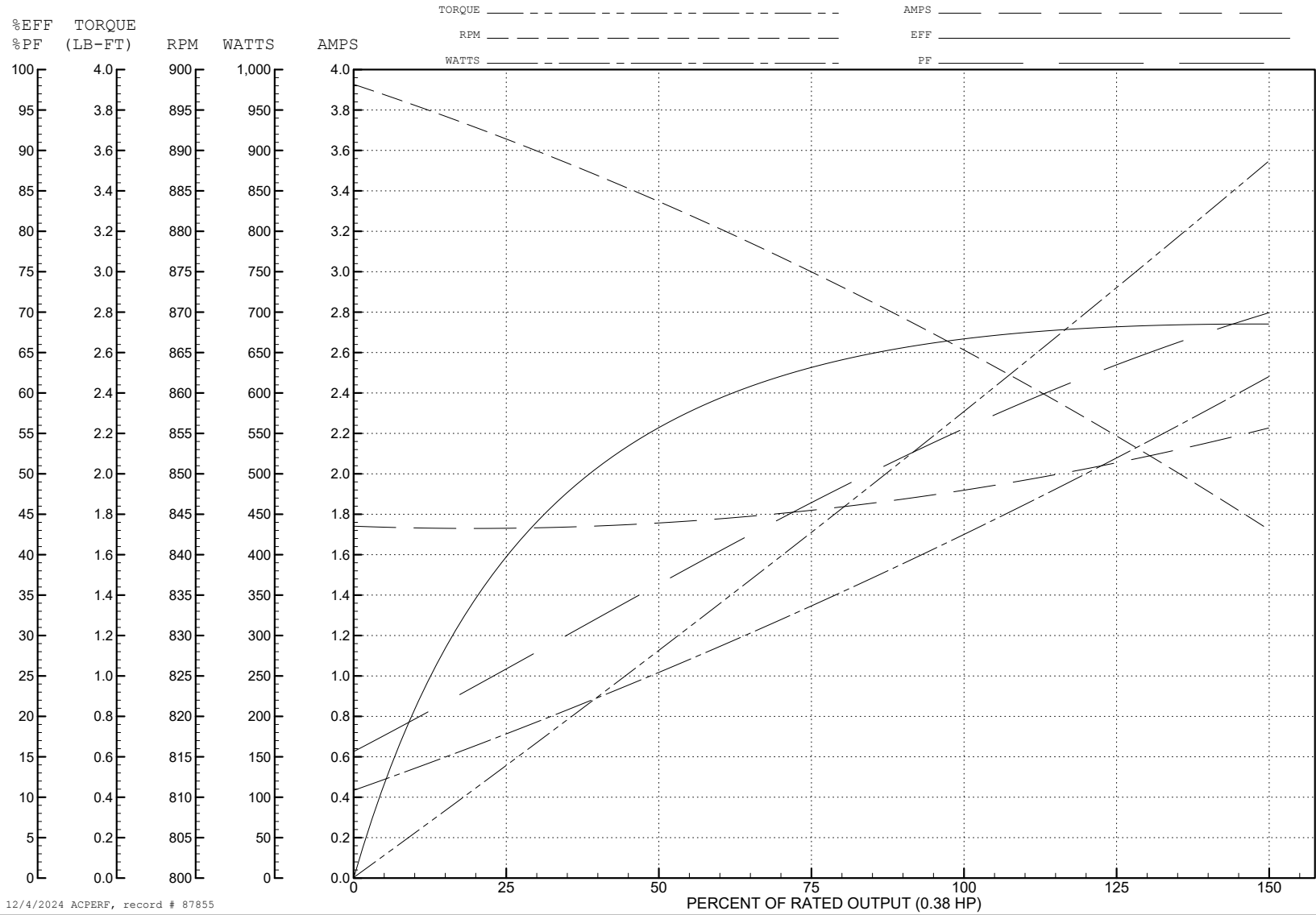
ABB Motors and Mechanical Inc.

WINDING # 35WGG353

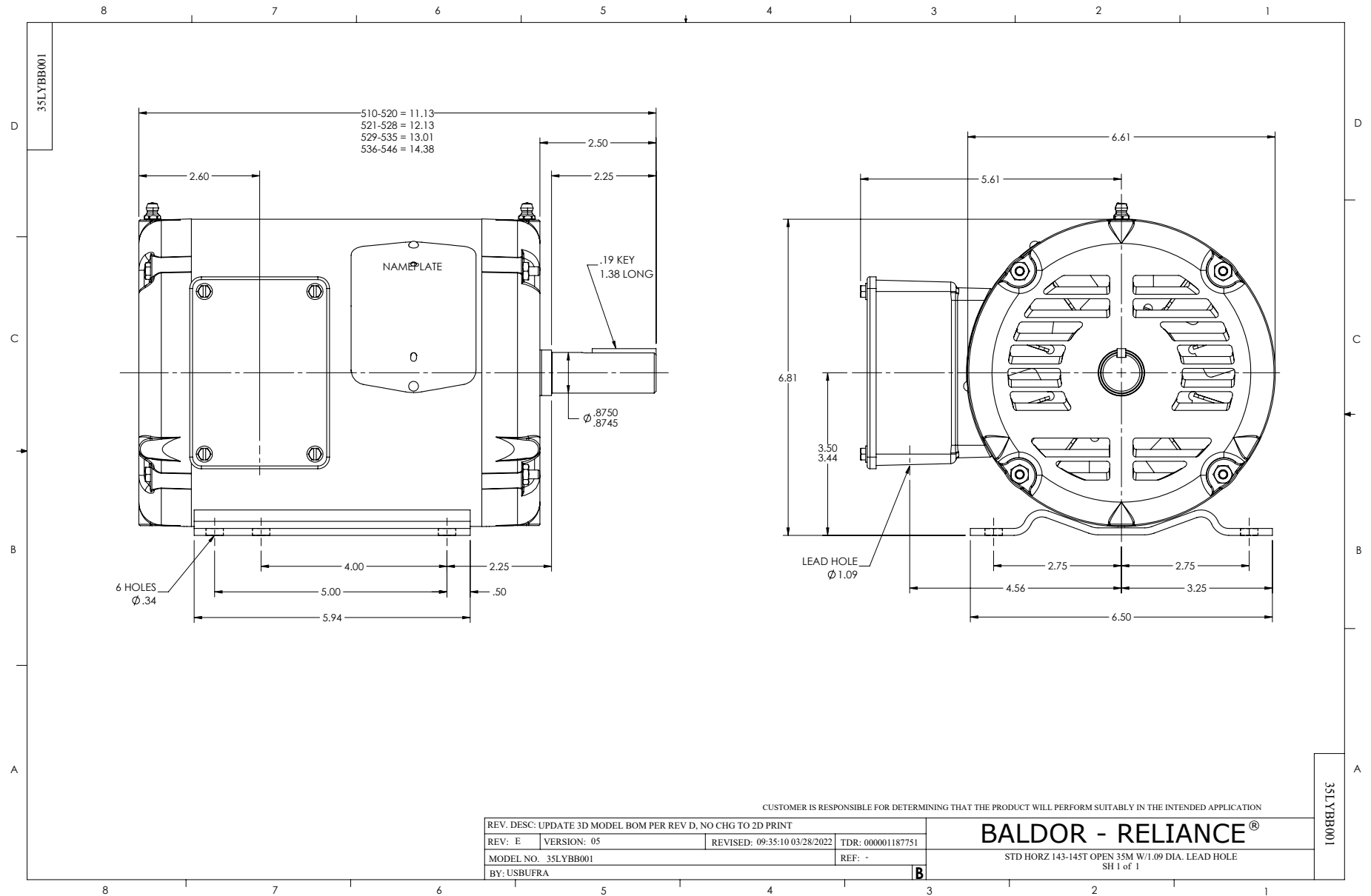
0.38 HP 3 PH 60 HZ 865.5 RPM 230 V 3524M

Typical performance - not guaranteed values.

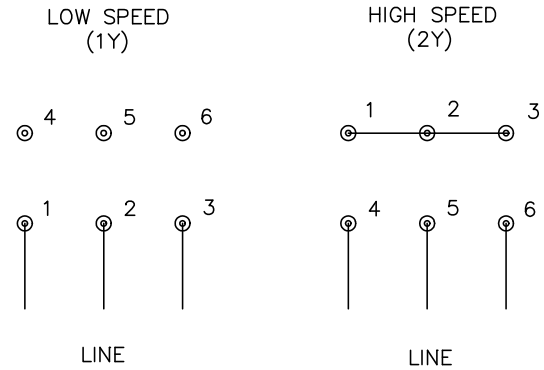
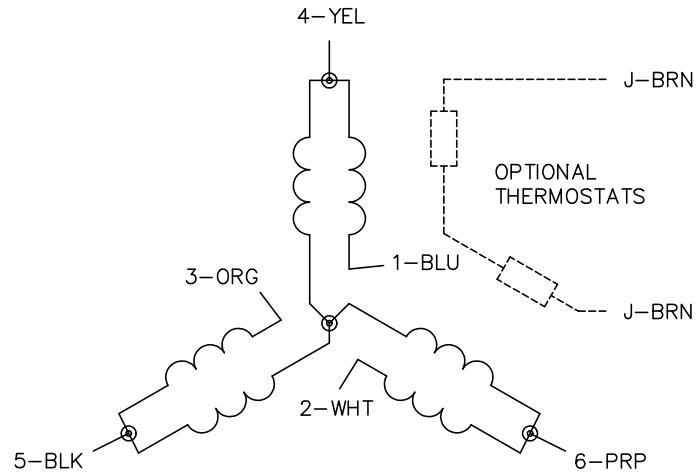
TORQUES (LB-FT): PO=7.41 PU=4.14 LR=5.48 LRA=7.27



12/4/2024 ACPERF, record # 87855



CD0032



NOTES:

1. INTERCHANGE ANY TWO LINE LEADS TO REVERSE ROTATION.
2. OPTIONAL THERMOSTATS ARE PROVIDED WHEN SPECIFIED.
3. ACTUAL NUMBER OF INTERNAL PARALLEL CIRCUITS MAY BE A MULTIPLE OF THOSE SHOWN ABOVE.
4. LEAD COLORS ARE OPTIONAL. LEADS MUST ALWAYS BE NUMBERED AS SHOWN.

CD0032

REV. DESC: REVISE TO SHOW OPTIONAL COLORS			
REV. LTR: E	BY: JLP	REVISED: 01/22/99 8:27	TDR: 0171435
CD0032		FILE: AAA00005145	MDL: -
		MTL: -	

**BALDOR ELECTRIC Co.**

3PH, SV, 6 LEADS, 2-SPEED 1-WINDING VARIABLE TORQUE