

**BALDOR • RELIANCE**

---

# Customer information packet

## L3712T

10HP, 1740RPM, 1PH, 60HZ, 215T, 3748LC, TEFC, F

Class - None

Division - Not Applicable

Copyright © All product information within this document is subject to ABB Motors and Mechanical Inc. copyright © protection, unless otherwise noted.

4/23/2025 12:44:51 PM

## Specifications

Enclosure	TEFC
Frame	215T
Frame Material	Steel
Frequency	60.00 Hz
Haz Area Class and Group	None
Haz Area Division	Not Applicable
Motor Letter Type	Cap Start, Cap Run
Output @ Frequency	10.000 HP @ 60 HZ
Phase	1
Synchronous Speed @ Frequency	1800 RPM @ 60 HZ
Voltage @ Frequency	230.0 V @ 60 HZ
Agency Approvals	UR CSA
Ambient Temperature	40 °C
Auxillary Box	No Auxillary Box
Auxillary Box Lead Termination	None
Base Indicator	Rigid
Bearing Grease Type	Polyrex EM (-20F +300F)
Blower	None
Current @ Voltage	38.000 A @ 230.0 V
Design Code	L
Drip Cover	No Drip Cover
Duty Rating	CONT
Efficiency @ 100% Load	86.5 %
Electrically Isolated Bearing	Not Electrically Isolated
Feedback Device	NO FEEDBACK
Front Face Code	Standard
Front Shaft Indicator	None
Heater Indicator	No Heater
High Voltage Full Load Amps	38.0 a
Insulation Class	F
Inverter Code	Not Inverter

## Part detail

Revision	S
Type	AC
Mech. spec.	37M293
Base	
Status	PRD/A
Elec. spec.	37WGT875
Layout	37LYM293
Eff. date	05-13-2024
CD Diagram	CD1084
Poles	04
Leads	2#10 A PH,2#14 B PH
Proprietary	False
Created date	01-07-2010

<b>KVA Code</b>	F
<b>Lifting Lugs</b>	Standard Lifting Lugs
<b>Locked Bearing Indicator</b>	No Locked Bearing
<b>Motor Lead Exit</b>	Cap Box
<b>Motor Lead Quantity/Wire Size</b>	2 @ 10 AWG, A PH
<b>Motor Lead Termination</b>	Flying Leads
<b>Motor Standards</b>	NEMA
<b>Motor Type</b>	3748LC
<b>Mounting Arrangement</b>	F1
<b>Number of Poles</b>	4
<b>Overall Length</b>	20.52 IN
<b>Power Factor</b>	98
<b>Product Family</b>	General Purpose
<b>Pulley End Bearing Type</b>	Ball
<b>Pulley Face Code</b>	Standard
<b>Pulley Shaft Indicator</b>	Standard
<b>Rodent Screen</b>	None
<b>Service Factor</b>	1.00
<b>Shaft Diameter</b>	1.375 IN
<b>Shaft Extension Location</b>	Pulley End
<b>Shaft Ground Indicator</b>	No Shaft Grounding
<b>Shaft Rotation</b>	Reversible
<b>Shaft Slinger Indicator</b>	No Slinger
<b>Speed</b>	1740 rpm
<b>Speed Code</b>	Single Speed
<b>Starting Method</b>	Direct on line
<b>Thermal Device - Bearing</b>	None
<b>Thermal Device - Winding</b>	None
<b>Vibration Sensor Indicator</b>	No Vibration Sensor
<b>Winding Thermal 1</b>	None
<b>Winding Thermal 2</b>	None

**Nameplate**

<b>NP1256L</b>									
<b>CAT.NO.</b>	L3712T								
<b>SPEC.</b>	37M293T875								
<b>HP</b>	10								
<b>VOLTS</b>	230								
<b>AMP</b>	38								
<b>RPM</b>	1740								
<b>FRAME</b>	215T		<b>HZ</b>	60		<b>PH</b>	1		
<b>SER.F.</b>	1.00	<b>CODE</b>	F	<b>DES</b>	L	<b>CLASS</b>	F		
<b>NEMA-NOM-EFF</b>	86.5	<b>PF</b>	98						
<b>RATING</b>	40C AMB-CONT								
<b>CC</b>									
<b>DE</b>	6307		<b>ODE</b>	6206					
<b>ENCL</b>	TEFC	<b>SN</b>							

**AC Induction Motor Performance Data**

Record # 37141

Typical performance - not guaranteed values

Winding: 37WGT875-R001		Type: 3748LC	Enclosure: TEFC	
<b>Nameplate Data</b>			<b>230 V, 60 Hz: Single Voltage Motor</b>	
Rated Output (HP)	10	Full Load Torque	29.8 LB-FT	
Volts	230	Start Configuration	direct on line	
Full Load Amps	38	Breakdown Torque	84 LB-FT	
R.P.M.	1740	Pull-up Torque	56.4 LB-FT	
Hz	60 Phase	1	Locked-rotor Torque	76.8 LB-FT
NEMA Design Code	L KVA Code	F	Starting Current	234 A
Service Factor (S.F.)		1	No-load Current	4.37 A
NEMA Nom. Eff.	86.5 Power Factor	98	Line-line Res. @ 25°C	0.17 Ω A Ph 0.488 Ω B Ph
Rating - Duty		40C AMB-CONT	Temp. Rise @ Rated Load	96°C

**Load Characteristics 230 V, 60 Hz, 10 HP**

% of Rated Load	25	50	75	100	125	150
Power Factor	96	98	98	98	97	95
Efficiency	75.4	86.2	87.7	86.8	84.1	79.4
Speed	1788	1775	1759	1741	1720	1696
Line amperes	10.7	18.9	28	37.7	49.1	64.9

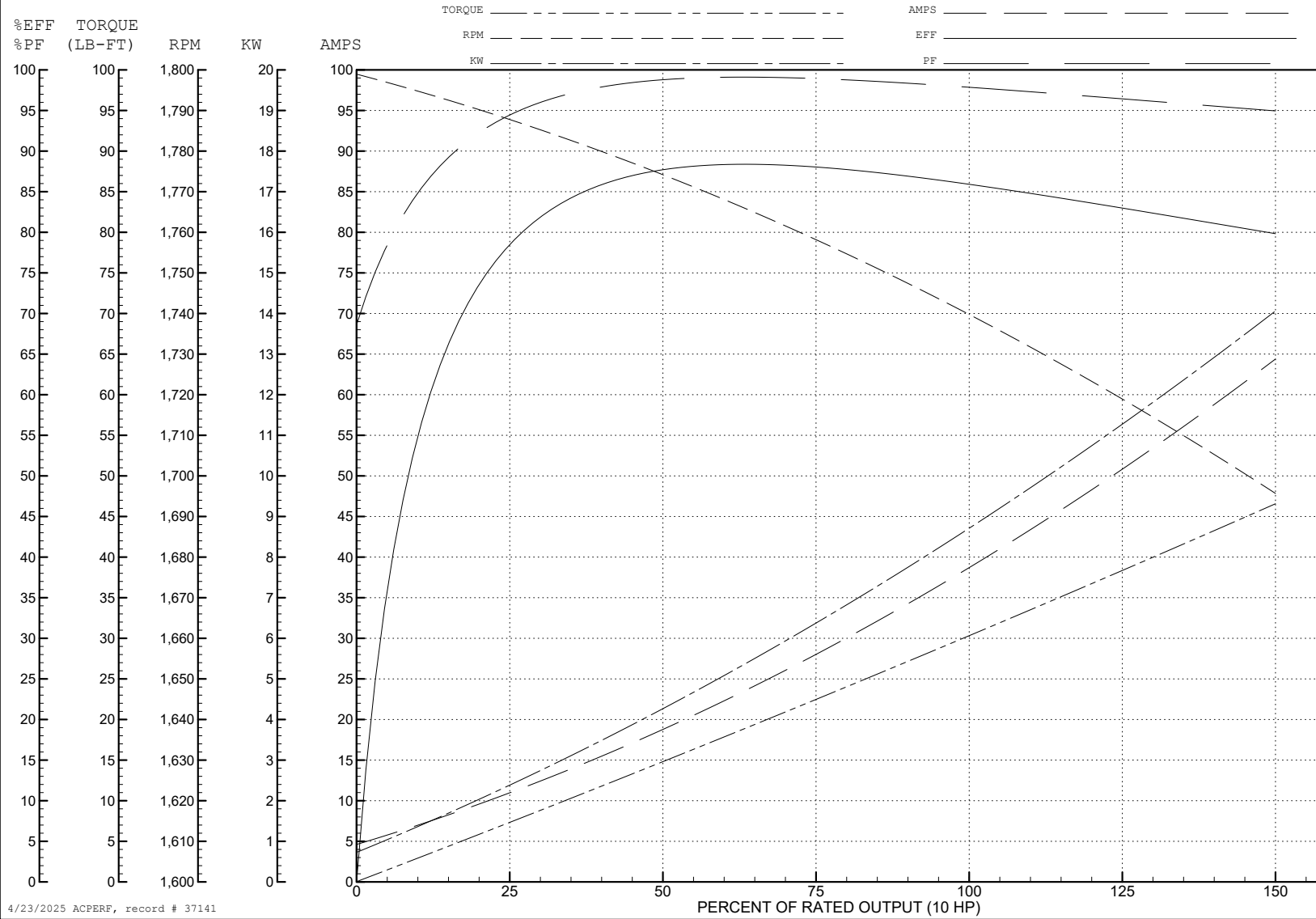
ABB Motors and Mechanical Inc.

WINDING # 37WGT875

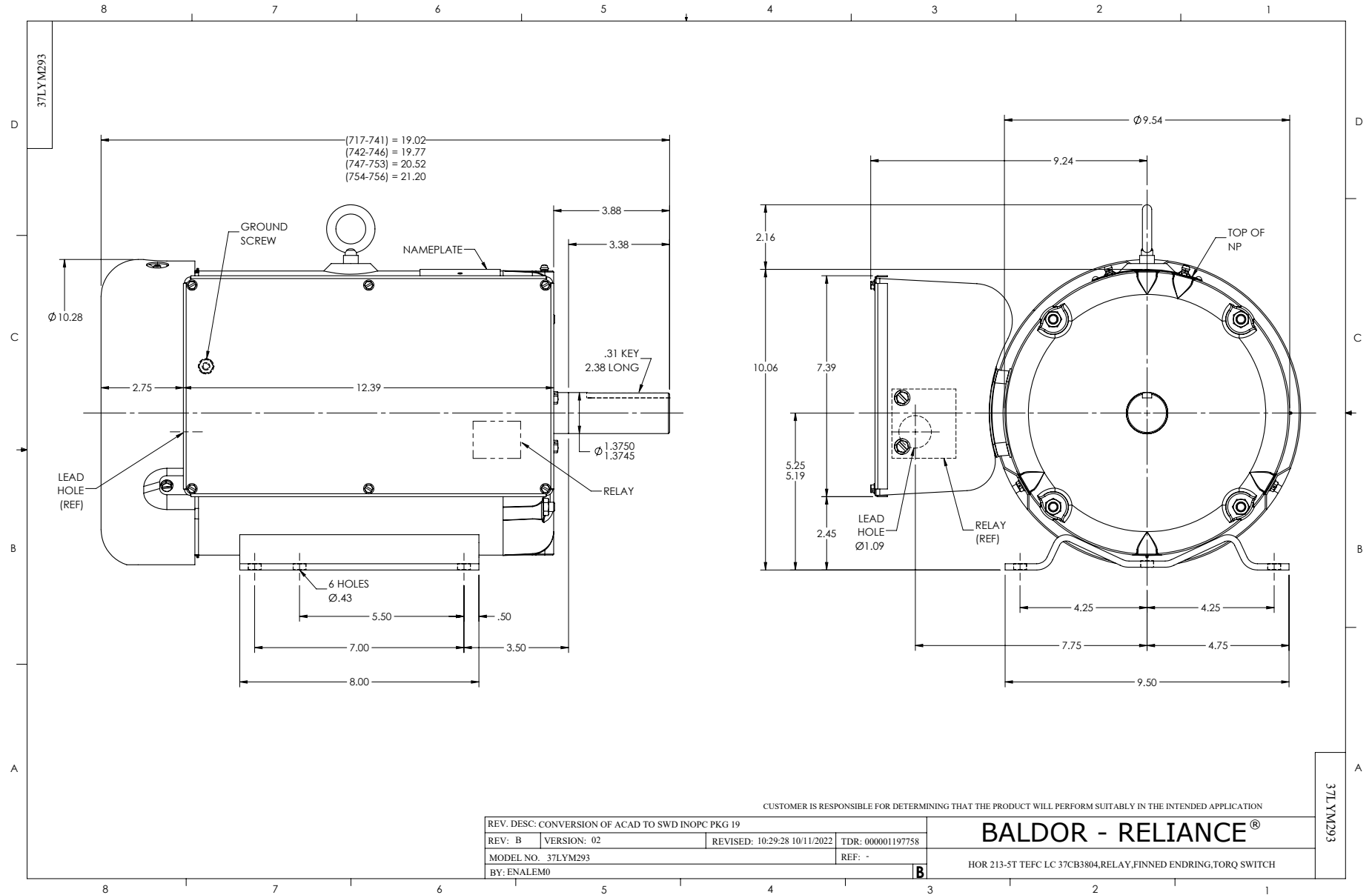
Typical performance - not guaranteed values.

10 HP 1 PH 60 HZ 1740 RPM 230 V 3748LC

TORQUES (LB-FT): PO=84 PU=56.4 LR=76.8 LRA=234



4/23/2025 ACPERF, record # 37141



CUSTOMER IS RESPONSIBLE FOR DETERMINING THAT THE PRODUCT WILL PERFORM SUITABLY IN THE INTENDED APPLICATION

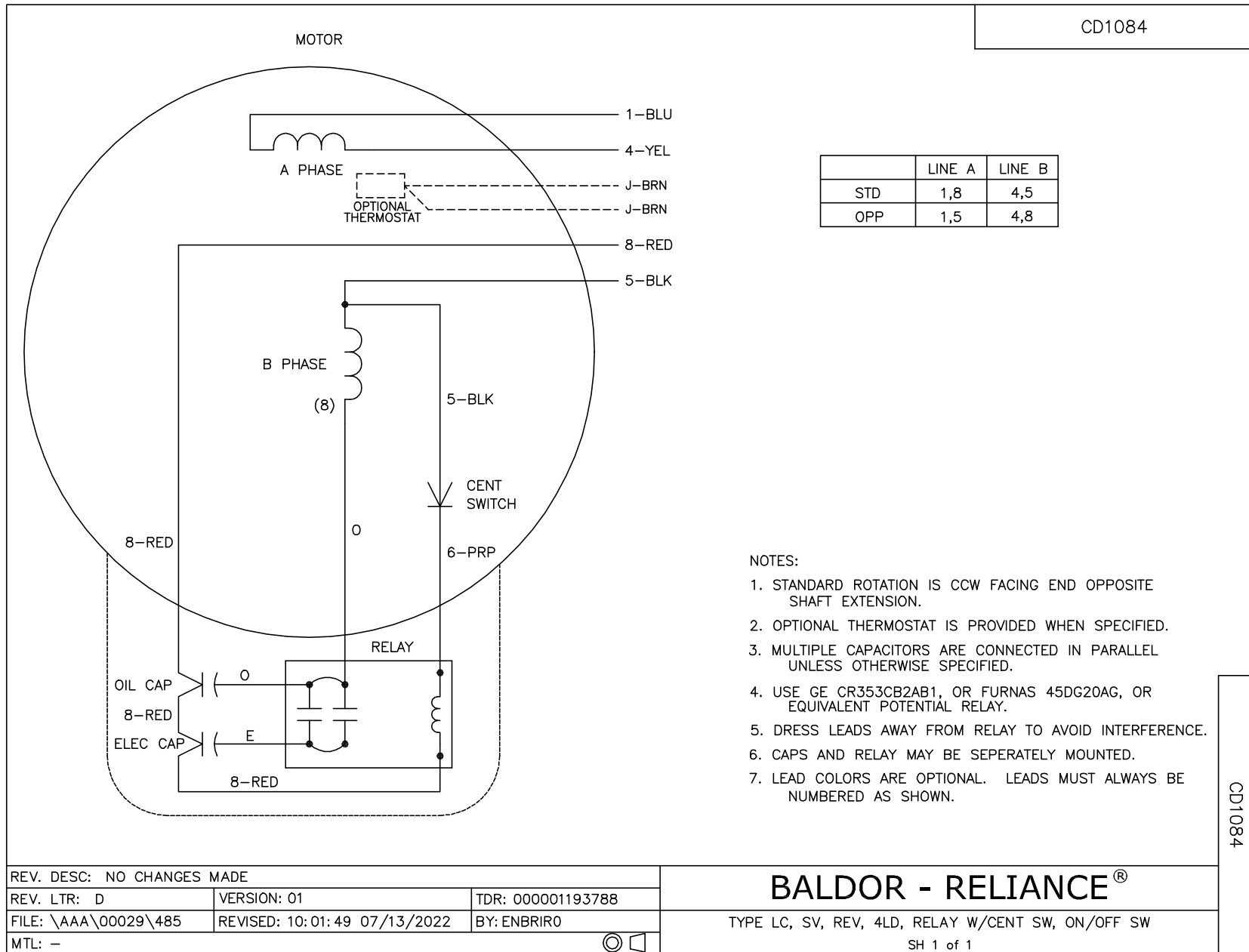
REV. DESC: CONVERSION OF ACAD TO SWD INOPC PKG 19		TDR: 000001197758	
REV: B	VERSION: 02	REVISED: 10/29/28 10/11/2022	REF: -
MODEL NO. 37LYM293			
BY: ENALEM0			

**BALDOR - RELIANCE**®

HOR 213-5T TEFC LC 37CB3804,RELAY,FINNED ENDRING,TORQ SWITCH

37LYM293

CD1084



	LINE A	LINE B
STD	1,8	4,5
OPP	1,5	4,8

- NOTES:
1. STANDARD ROTATION IS CCW FACING END OPPOSITE SHAFT EXTENSION.
  2. OPTIONAL THERMOSTAT IS PROVIDED WHEN SPECIFIED.
  3. MULTIPLE CAPACITORS ARE CONNECTED IN PARALLEL UNLESS OTHERWISE SPECIFIED.
  4. USE GE CR353CB2AB1, OR FURNAS 45DG20AG, OR EQUIVALENT POTENTIAL RELAY.
  5. DRESS LEADS AWAY FROM RELAY TO AVOID INTERFERENCE.
  6. CAPS AND RELAY MAY BE SEPERATELY MOUNTED.
  7. LEAD COLORS ARE OPTIONAL. LEADS MUST ALWAYS BE NUMBERED AS SHOWN.

CD1084

REV. DESC: NO CHANGES MADE		
REV. LTR: D	VERSION: 01	TDR: 000001193788
FILE: \AAA\00029\485	REVISED: 10:01:49 07/13/2022	BY: ENBRIRO
MTL: -		

**BALDOR - RELIANCE**<sup>®</sup>

TYPE LC, SV, REV, 4LD, RELAY W/CENT SW, ON/OFF SW

SH 1 of 1