

# ABB BALDOR RELIANCE III

---

## Customer information packet

L3711T

10HP, 3450RPM, 1PH, 60HZ, 215T, 3744LC, TEFC, F

Class - None

Division - Not Applicable

**Specifications**

<b>Enclosure</b>	TEFC
<b>Frame</b>	215T
<b>Frame Material</b>	Steel
<b>Frequency</b>	60.00 Hz
<b>Haz Area Class and Group</b>	None
<b>Haz Area Division</b>	Not Applicable
<b>Motor Letter Type</b>	Cap Start, Cap Run
<b>Output @ Frequency</b>	10.000 HP @ 60 HZ
<b>Phase</b>	1
<b>Synchronous Speed @ Frequency</b>	3600 RPM @ 60 HZ
<b>Voltage @ Frequency</b>	230.0 V @ 60 HZ
<b>Agency Approvals</b>	C UR US
<b>Ambient Temperature</b>	40 °C
<b>Auxiliary Box</b>	NO AUXILLARY BOX
<b>Auxiliary Box Lead Termination</b>	None
<b>Base Indicator</b>	Rigid
<b>Bearing Grease Type</b>	Polyrex EM (-20F +300F)
<b>Blower</b>	None
<b>Current @ Voltage</b>	40.000 A @ 230.0 V
<b>Design Code</b>	L
<b>Drip Cover</b>	No Drip Cover
<b>Duty Rating</b>	CONT
<b>Efficiency @ 100% Load</b>	82.0 %
<b>Electrically Isolated Bearing</b>	Not Electrically Isolated
<b>Feedback Device</b>	NO FEEDBACK
<b>Front Face Code</b>	Standard
<b>Front Shaft Indicator</b>	None
<b>Heater Indicator</b>	No Heater
<b>High Voltage Full Load Amps</b>	40.0 a
<b>Insulation Class</b>	F
<b>Inverter Code</b>	Not Inverter
<b>KVA Code</b>	H

**Part Detail**

<b>Revision</b>	L
<b>Type</b>	AC
<b>Mech. spec.</b>	37M230
<b>Base</b>	
<b>Status</b>	PRD/A
<b>Elec. spec.</b>	37WG578
<b>Layout</b>	37LYM230
<b>Eff. date</b>	05-13-2024
<b>CD Diagram</b>	CD0086
<b>Poles</b>	02
<b>Leads</b>	2#10 A PH,2#14 B PH
<b>Proprietary</b>	False
<b>Created date</b>	02-09-2010

<b>Lifting Lugs</b>	Standard Lifting Lugs
<b>Locked Bearing Indicator</b>	No Locked Bearing
<b>Motor Lead Exit</b>	Ko Box
<b>Motor Lead Quantity/Wire Size</b>	2 @ 10 AWG, A PH
<b>Motor Lead Termination</b>	Flying Leads
<b>Motor Standards</b>	NEMA
<b>Motor Type</b>	3744LC
<b>Mounting Arrangement</b>	F1
<b>Number of Poles</b>	2
<b>Overall Length</b>	19.02 IN
<b>Power Factor</b>	98
<b>Product Family</b>	General Purpose
<b>Pulley End Bearing Type</b>	Ball
<b>Pulley Face Code</b>	Standard
<b>Pulley Shaft Indicator</b>	Standard
<b>Rodent Screen</b>	None
<b>Service Factor</b>	1.00
<b>Shaft Diameter</b>	1.375 IN
<b>Shaft Extension Location</b>	Pulley End
<b>Shaft Ground Indicator</b>	No Shaft Grounding
<b>Shaft Rotation</b>	Reversible
<b>Shaft Slinger Indicator</b>	No Slinger
<b>Speed</b>	3450 rpm
<b>Speed Code</b>	Single Speed
<b>Starting Method</b>	Direct on line
<b>Thermal Device - Bearing</b>	None
<b>Thermal Device - Winding</b>	None
<b>Vibration Sensor Indicator</b>	No Vibration Sensor
<b>Winding Thermal 1</b>	None
<b>Winding Thermal 2</b>	None

**Nameplate**

<b>NP1256L</b>										
<b>CAT.NO.</b>	L3711T									
<b>SPEC.</b>	37M230W578									
<b>HP</b>	10									
<b>VOLTS</b>	230									
<b>AMP</b>	40									
<b>RPM</b>	3450									
<b>FRAME</b>	215T		<b>HZ</b>	60			<b>PH</b>	1		
<b>SER.F.</b>	1.00	<b>CODE</b>	H	<b>DES</b>	L	<b>CLASS</b>	F			
<b>NEMA-NOM-EFF</b>	82	<b>PF</b>	98							
<b>RATING</b>	40C AMB-CONT									
<b>CC</b>										
<b>DE</b>	6307		<b>ODE</b>	6206						
<b>ENCL</b>	TEFC	<b>SN</b>								

**Accessories**

<b>Part number</b>	<b>Description</b>	<b>Multiplier</b>
37-3301	C FACE KIT	P1

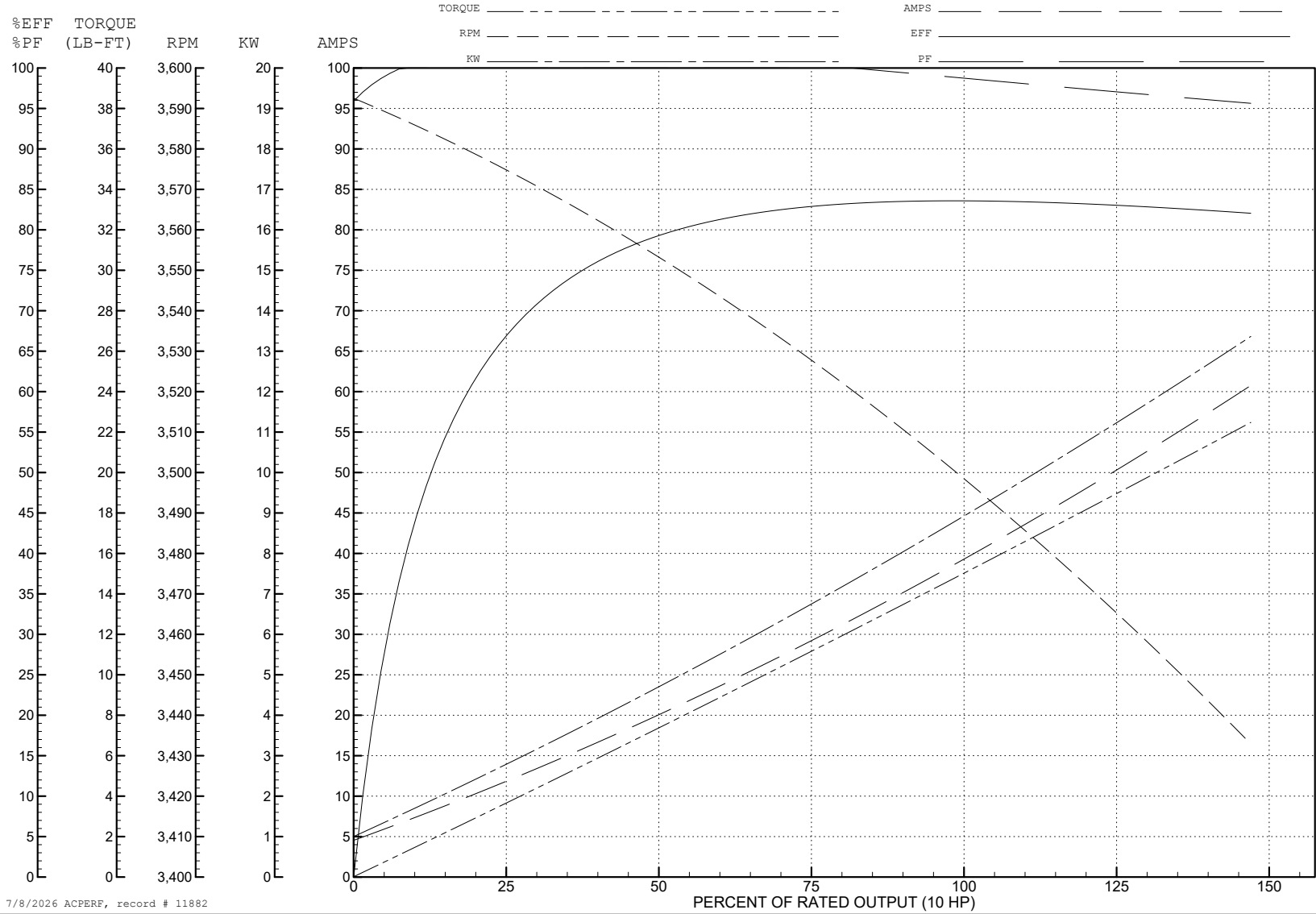
ABB Motors and Mechanical Inc.

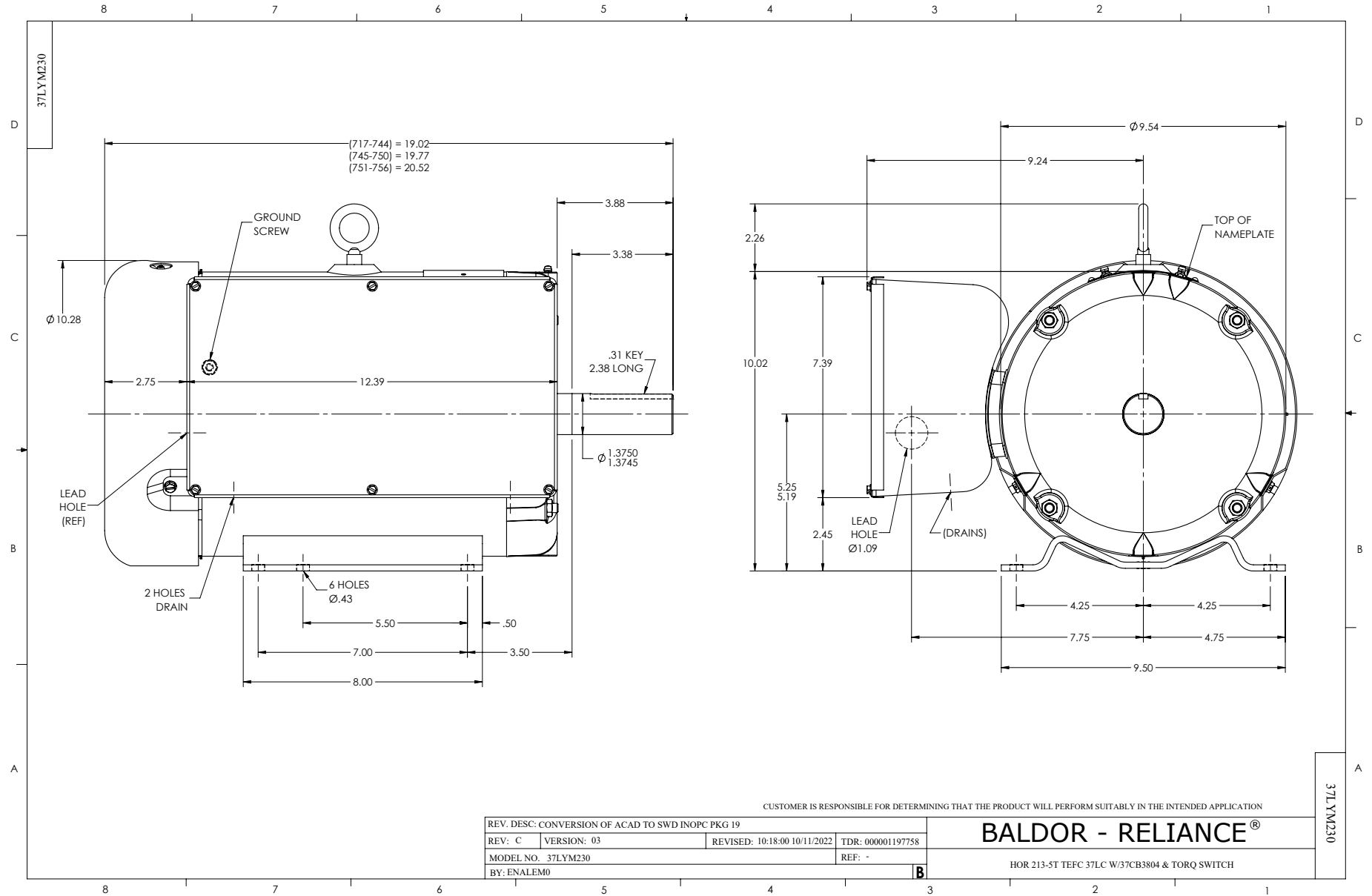
WINDING # 37WGW578

Typical performance - not guaranteed values.

10 HP 1 PH 60 HZ 3450 RPM 230 V 3744LC

TORQUES (LB-FT) : PO=44 PU=33 LR=42 LRA=284





CUSTOMER IS RESPONSIBLE FOR DETERMINING THAT THE PRODUCT WILL PERFORM SUITABLY IN THE INTENDED APPLICATION

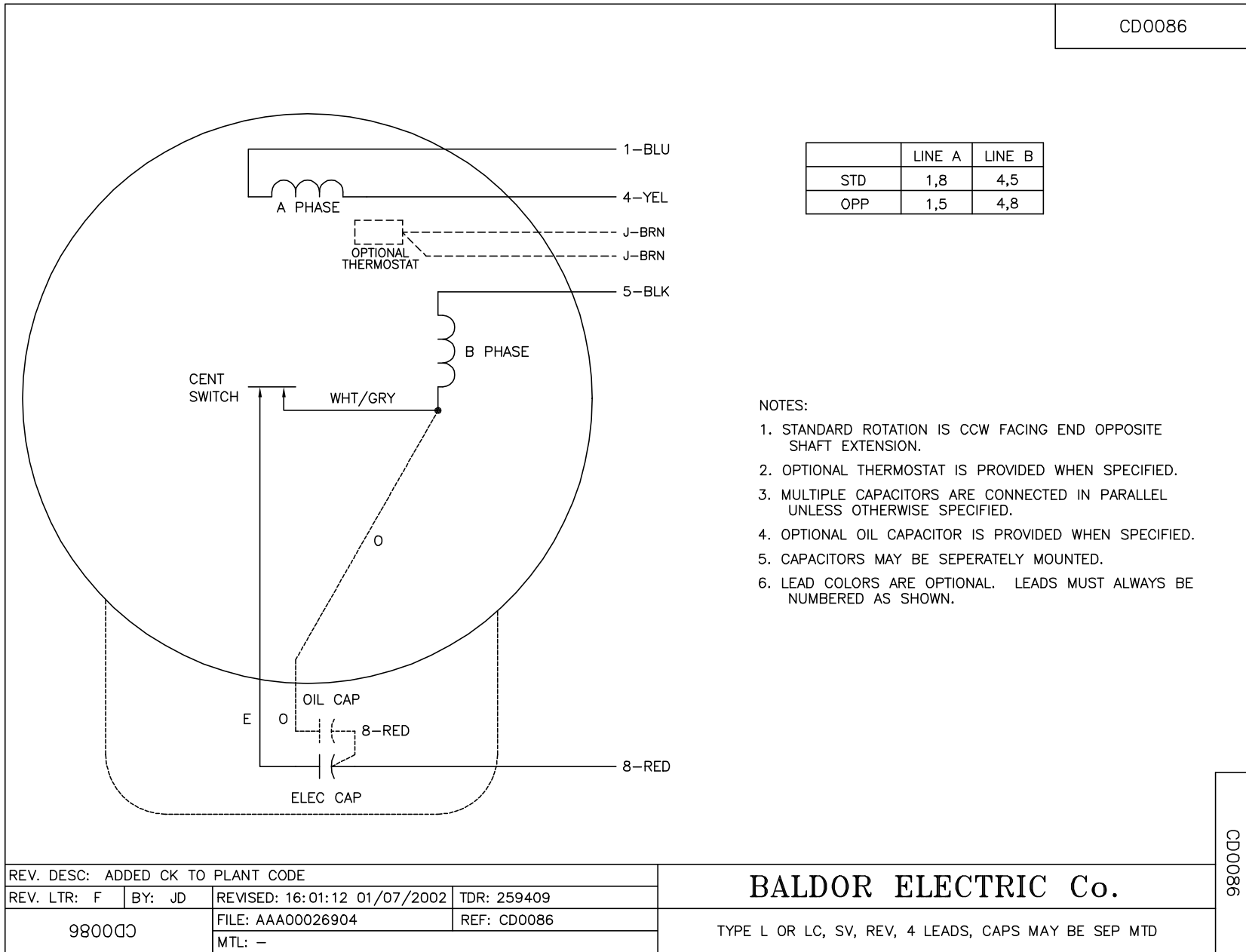
REV. DESC: CONVERSION OF ACAD TO SWD INOPC PKG 19			
REV: C	VERSION: 03	REVISED: 10/18/00 10/11/2022	TDR: 000001197758
MODEL NO. 37LYM230		REF: -	
BY: ENALEM0			

**BALDOR - RELIANCE®**

HOR 213-5T TEFC 37LC W/37CB3804 & TORQ SWITCH

37LYM230

CD0086



	LINE A	LINE B
STD	1,8	4,5
OPP	1,5	4,8

NOTES:

1. STANDARD ROTATION IS CCW FACING END OPPOSITE SHAFT EXTENSION.
2. OPTIONAL THERMOSTAT IS PROVIDED WHEN SPECIFIED.
3. MULTIPLE CAPACITORS ARE CONNECTED IN PARALLEL UNLESS OTHERWISE SPECIFIED.
4. OPTIONAL OIL CAPACITOR IS PROVIDED WHEN SPECIFIED.
5. CAPACITORS MAY BE SEPERATELY MOUNTED.
6. LEAD COLORS ARE OPTIONAL. LEADS MUST ALWAYS BE NUMBERED AS SHOWN.

REV. DESC: ADDED CK TO PLANT CODE			
REV. LTR: F	BY: JD	REVISED: 16:01:12 01/07/2002	TDR: 259409
980000		FILE: AAA00026904	REF: CD0086
		MTL: -	

**BALDOR ELECTRIC Co.**

TYPE L OR LC, SV, REV, 4 LEADS, CAPS MAY BE SEP MTD

CD0086