

ABB BALDOR RELIANCE III



Customer information packet

L3709T

7.5HP, 3450RPM, 1PH, 60HZ, 213T, 3735LC, TEFC

Class - None

Division - Not Applicable

Specifications

| | |
|--------------------------------|---------------------------|
| Enclosure | TEFC |
| Frame | 213T |
| Frame Material | Steel |
| Frequency | 60.00 Hz |
| Haz Area Class and Group | None |
| Haz Area Division | Not Applicable |
| Motor Letter Type | Cap Start, Cap Run |
| Output @ Frequency | 7.500 HP @ 60 HZ |
| Phase | 1 |
| Synchronous Speed @ Frequency | 3600 RPM @ 60 HZ |
| Voltage @ Frequency | 230.0 V @ 60 HZ |
| Agency Approvals | C UR US |
| Ambient Temperature | 40 °C |
| Auxiliary Box | NO AUXILLARY BOX |
| Auxiliary Box Lead Termination | None |
| Base Indicator | Rigid |
| Bearing Grease Type | Polyrex EM (-20F +300F) |
| Blower | None |
| Current @ Voltage | 33.000 A @ 230.0 V |
| Design Code | L |
| Drip Cover | No Drip Cover |
| Duty Rating | CONT |
| Efficiency @ 100% Load | 83.0 % |
| Electrically Isolated Bearing | Not Electrically Isolated |
| Feedback Device | NO FEEDBACK |
| Front Face Code | Standard |
| Front Shaft Indicator | None |
| Heater Indicator | No Heater |
| High Voltage Full Load Amps | 33.0 a |
| Insulation Class | F |
| Inverter Code | Not Inverter |
| KVA Code | F |

Part Detail

| | |
|--------------|---------------------|
| Revision | L |
| Type | AC |
| Mech. spec. | 37M324 |
| Base | |
| Status | PRD/A |
| Elec. spec. | 37GW579 |
| Layout | 37LYM324 |
| Eff. date | 05-13-2024 |
| CD Diagram | CD0017A02 |
| Poles | 02 |
| Leads | 2#10 A PH,2#14 B PH |
| Proprietary | False |
| Created date | 02-11-2010 |

| | |
|--------------------------------------|-----------------------|
| Lifting Lugs | Standard Lifting Lugs |
| Locked Bearing Indicator | No Locked Bearing |
| Motor Lead Exit | Ko Box |
| Motor Lead Quantity/Wire Size | 2 @ 10 AWG, A PH |
| Motor Lead Termination | Flying Leads |
| Motor Standards | NEMA |
| Motor Type | 3735LC |
| Mounting Arrangement | F1 |
| Number of Poles | 2 |
| Overall Length | 17.89 IN |
| Power Factor | 91 |
| Product Family | General Purpose |
| Pulley End Bearing Type | Ball |
| Pulley Face Code | Standard |
| Pulley Shaft Indicator | Standard |
| Rodent Screen | None |
| Service Factor | 1.00 |
| Shaft Diameter | 1.375 IN |
| Shaft Extension Location | Pulley End |
| Shaft Ground Indicator | No Shaft Grounding |
| Shaft Rotation | Reversible |
| Shaft Slinger Indicator | No Slinger |
| Speed | 3450 rpm |
| Speed Code | Single Speed |
| Starting Method | Direct on line |
| Thermal Device - Bearing | None |
| Thermal Device - Winding | None |
| Vibration Sensor Indicator | No Vibration Sensor |
| Winding Thermal 1 | None |
| Winding Thermal 2 | None |

Nameplate

| NP1256L | | | | | | | | | | |
|---------------------|--------------|-------------|------|------------|-----------|--------------|---|--|--|--|
| CAT.NO. | L3709T | | | | | | | | | |
| SPEC. | 37M324W579G1 | | | | | | | | | |
| HP | 7.5 | | | | | | | | | |
| VOLTS | 230 | | | | | | | | | |
| AMP | 33 | | | | | | | | | |
| RPM | 3450 | | | | | | | | | |
| FRAME | 213T | HZ | 60 | | PH | 1 | | | | |
| SER.F. | 1.00 | CODE | F | DES | L | CLASS | F | | | |
| NEMA-NOM-EFF | 83 | PF | 91 | | | | | | | |
| RATING | 40C AMB-CONT | | | | | | | | | |
| CC | | | | | | | | | | |
| DE | 6307 | ODE | 6206 | | | | | | | |
| ENCL | TEFC | SN | | | | | | | | |

Accessories

| Part number | Description | Multiplier |
|--------------------|--------------------|-------------------|
| 37-3301 | C FACE KIT | P1 |

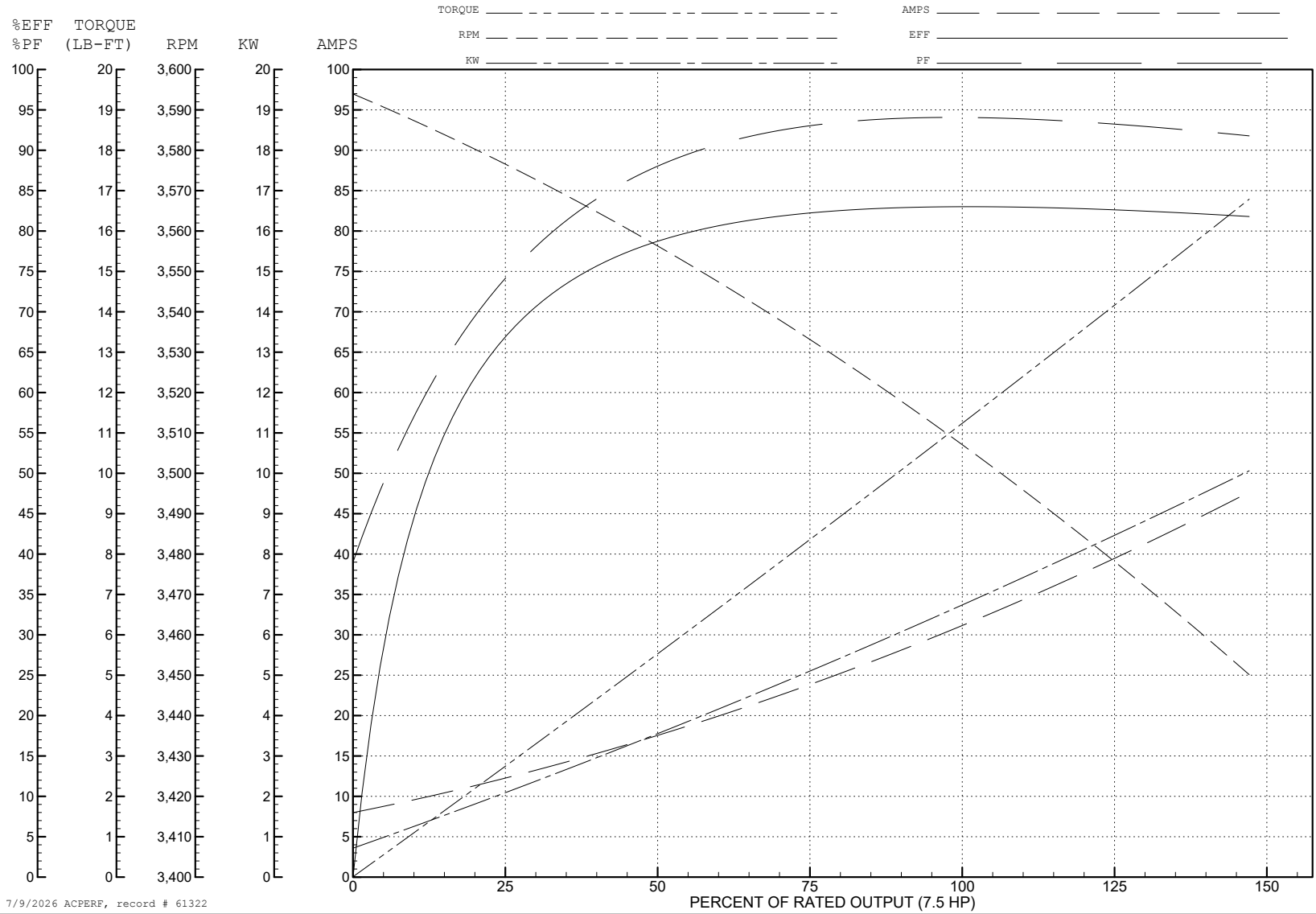
ABB Motors and Mechanical Inc.

WINDING # 37WGW579

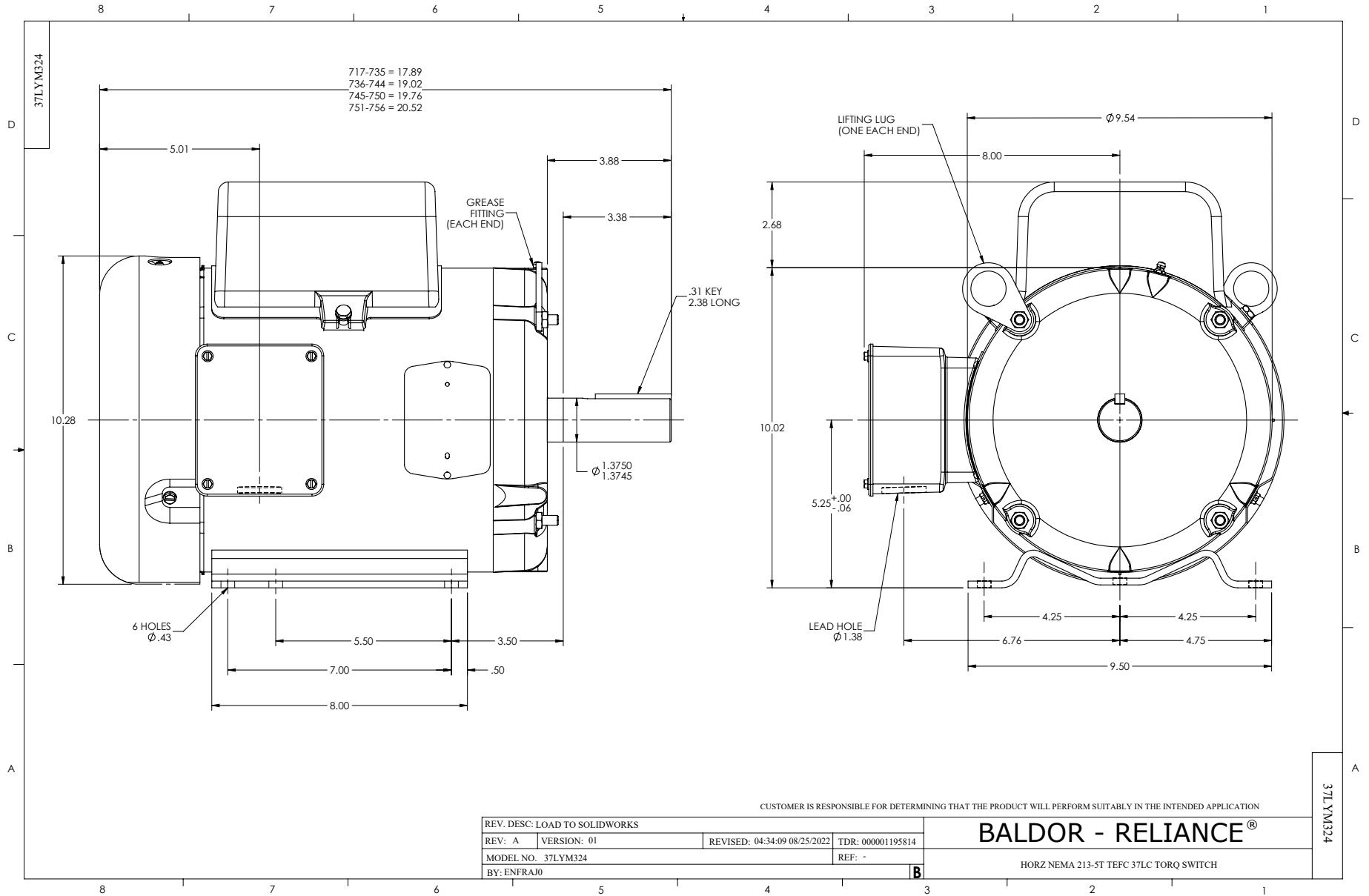
Typical performance - not guaranteed values.

7.5 HP 1 PH 60 HZ 3450 RPM 230 V 3735LC

TORQUES (LB-FT): PO=35 PU=17 LR=28 LRA=220



7/9/2026 ACPERF, record # 61322



CUSTOMER IS RESPONSIBLE FOR DETERMINING THAT THE PRODUCT WILL PERFORM SUITABLY IN THE INTENDED APPLICATION

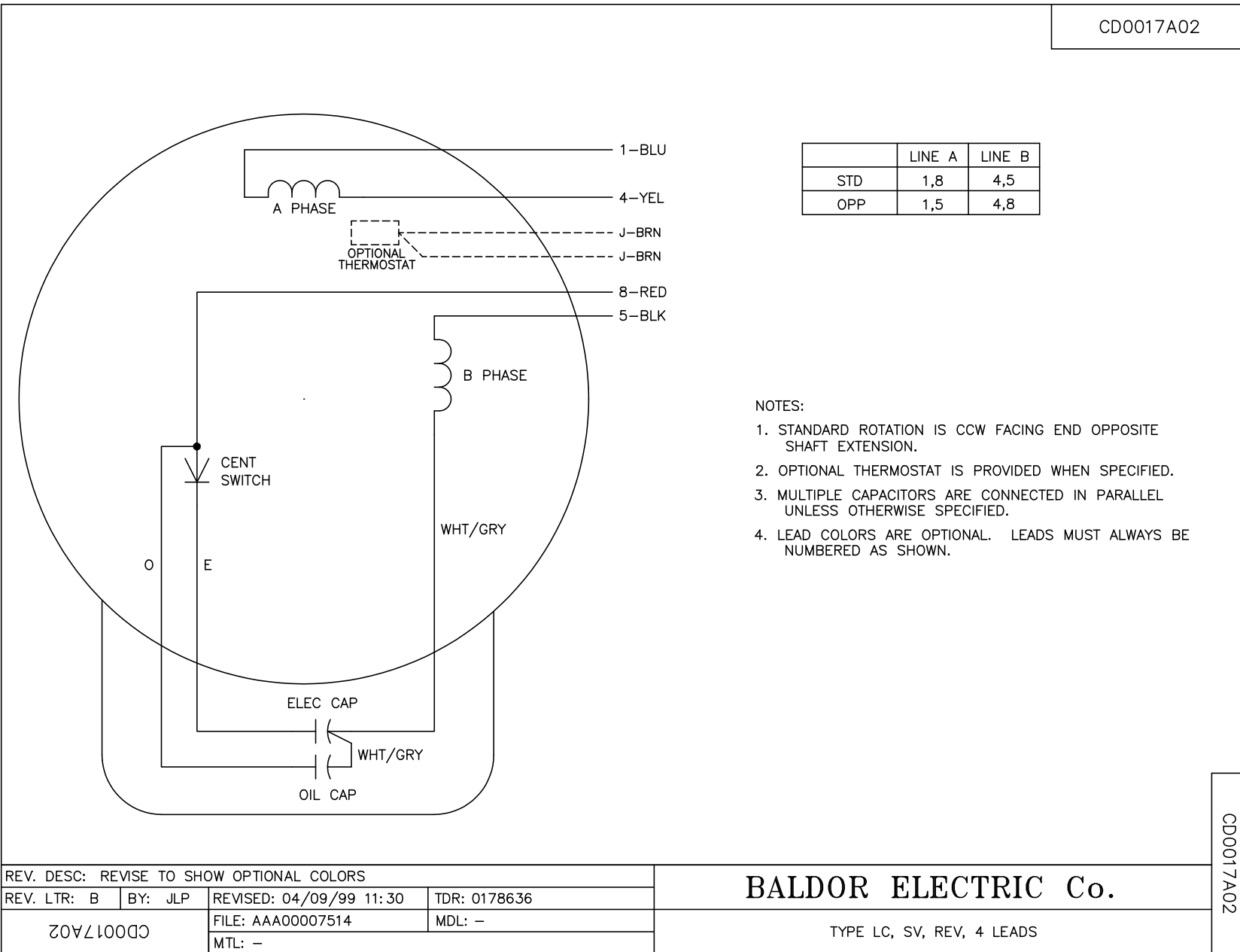
| | | | |
|-------------------------------|-------------|------------------------------|-------------------|
| REV. DESC: LOAD TO SOLIDWORKS | | | |
| REV: A | VERSION: 01 | REVISED: 04/34/09 08/25/2022 | TDR: 000001195814 |
| MODEL NO. 37LYM324 | | REF: - | |
| BY: ENFRAJ0 | | B | |

BALDOR - RELIANCE®

HORZ NEMA 213-5T TEFC 37LC TORQ SWITCH

37LYM324

CD0017A02



CD0017A02

| | | | |
|---|---------|-------------------------|--------------|
| REV. DESC: REVISE TO SHOW OPTIONAL COLORS | | | |
| REV. LTR: B | BY: JLP | REVISED: 04/09/99 11:30 | TDR: 0178636 |
| CD0017A02 | | FILE: AAA00007514 | MDL: - |
| | | MTL: - | |

BALDOR ELECTRIC Co.

TYPE LC, SV, REV, 4 LEADS