

BALDOR • RELIANCE

Customer information packet

L3708T

5HP, 1750RPM, 1PH, 60HZ, 213T, 3726LC, TEFC, F1

Class - None

Division - Not Applicable

Specifications

Enclosure	TEFC
Frame	213T
Frame Material	Steel
Frequency	60.00 Hz
Haz Area Class and Group	None
Haz Area Division	Not Applicable
Motor Letter Type	Cap Start, Cap Run
Output @ Frequency	5.000 HP @ 60 HZ
Phase	1
Synchronous Speed @ Frequency	1800 RPM @ 60 HZ
Voltage @ Frequency	230.0 V @ 60 HZ
Agency Approvals	CSA UR
Ambient Temperature	40 °C
Auxillary Box	No Auxillary Box
Auxillary Box Lead Termination	None
Base Indicator	Rigid
Bearing Grease Type	Polyrex EM (-20F +300F)
Blower	None
Current @ Voltage	22.000 A @ 208.0 V 20.500 A @ 230.0 V
Design Code	L
Drip Cover	No Drip Cover
Duty Rating	CONT
Efficiency @ 100% Load	84.0 %
Electrically Isolated Bearing	Not Electrically Isolated
Feedback Device	NO FEEDBACK
Front Face Code	Standard
Front Shaft Indicator	None
Heater Indicator	No Heater
High Voltage Full Load Amps	20.5 a
Insulation Class	F

Part detail

Revision	M
Type	AC
Mech. spec.	37M326
Base	
Status	PRD/A
Elec. spec.	37WGT877
Layout	37LYM326
Eff. date	05-13-2024
CD Diagram	CD0086
Poles	04
Leads	2#12 A PH,2#14 B PH
Proprietary	False
Created date	02-11-2010

Inverter Code	Not Inverter
KVA Code	H
Lifting Lugs	Standard Lifting Lugs
Locked Bearing Indicator	No Locked Bearing
Motor Lead Exit	Ko Box
Motor Lead Quantity/Wire Size	2 @ 12 AWG, A PH
Motor Lead Termination	Flying Leads
Motor Standards	NEMA
Motor Type	3726LC
Mounting Arrangement	F1
Number of Poles	4
Overall Length	19.02 IN
Power Factor	93
Product Family	General Purpose
Pulley End Bearing Type	Ball
Pulley Face Code	Standard
Pulley Shaft Indicator	Standard
Rodent Screen	None
Service Factor	1.15
Shaft Diameter	1.375 IN
Shaft Extension Location	Pulley End
Shaft Ground Indicator	No Shaft Grounding
Shaft Rotation	Reversible
Shaft Slinger Indicator	No Slinger
Speed	1750 rpm
Speed Code	Single Speed
Starting Method	Direct on line
Thermal Device - Bearing	None
Thermal Device - Winding	None
Vibration Sensor Indicator	No Vibration Sensor
Winding Thermal 1	None
Winding Thermal 2	None

Nameplate

NP1256L									
CAT.NO.	L3708T								
SPEC.	37M326T877								
HP	5								
VOLTS	230								
AMP	20.5								
RPM	1750								
FRAME	213T		HZ	60		PH	1		
SER.F.	1.15	CODE	H	DES	L	CLASS	F		
NEMA-NOM-EFF	84	PF	93						
RATING	40C AMB-CONT								
CC									
DE	6307		ODE	6206					
ENCL	TEFC	SN							

Accessories

Part number	Description	Multiplier
37-3301	C FACE KIT	P1

AC Induction Motor Performance Data

Record # 37143

Typical performance - not guaranteed values

Winding: 37WGT877-R001		Type: 3726LC		Enclosure: TEFC	
Nameplate Data			230 V, 60 Hz: Single Voltage Motor		
Rated Output (HP)	5	Full Load Torque	15 LB-FT		
Volts	230	Start Configuration	direct on line		
Full Load Amps	20.5	Breakdown Torque	40.3 LB-FT		
R.P.M.	1750	Pull-up Torque	32 LB-FT		
Hz	60	Phase	1	Locked-rotor Torque	46.2 LB-FT
NEMA Design Code	L	KVA Code	H	Starting Current	137 A
Service Factor (S.F.)			1.15	No-load Current	6.82 A
NEMA Nom. Eff.	84	Power Factor	93	Line-line Res. @ 25°C	0.386 Ω A Ph 1.1 Ω B Ph
Rating - Duty	40C AMB-CONT			Temp. Rise @ Rated Load	68°C
S.F. Amps				Temp. Rise @ S.F. Load	79°C

Load Characteristics 230 V, 60 Hz, 5 HP

% of Rated Load	25	50	75	100	125	150	S.F.
Power Factor	73	86	91	93	93	94	93
Efficiency	67	81.1	84.3	84.8	84.1	80.7	84.4
Speed	1788	1776	1764	1749	1731	1711	1738
Line amperes	8.48	11.7	15.8	20.5	25.9	32.2	23.7

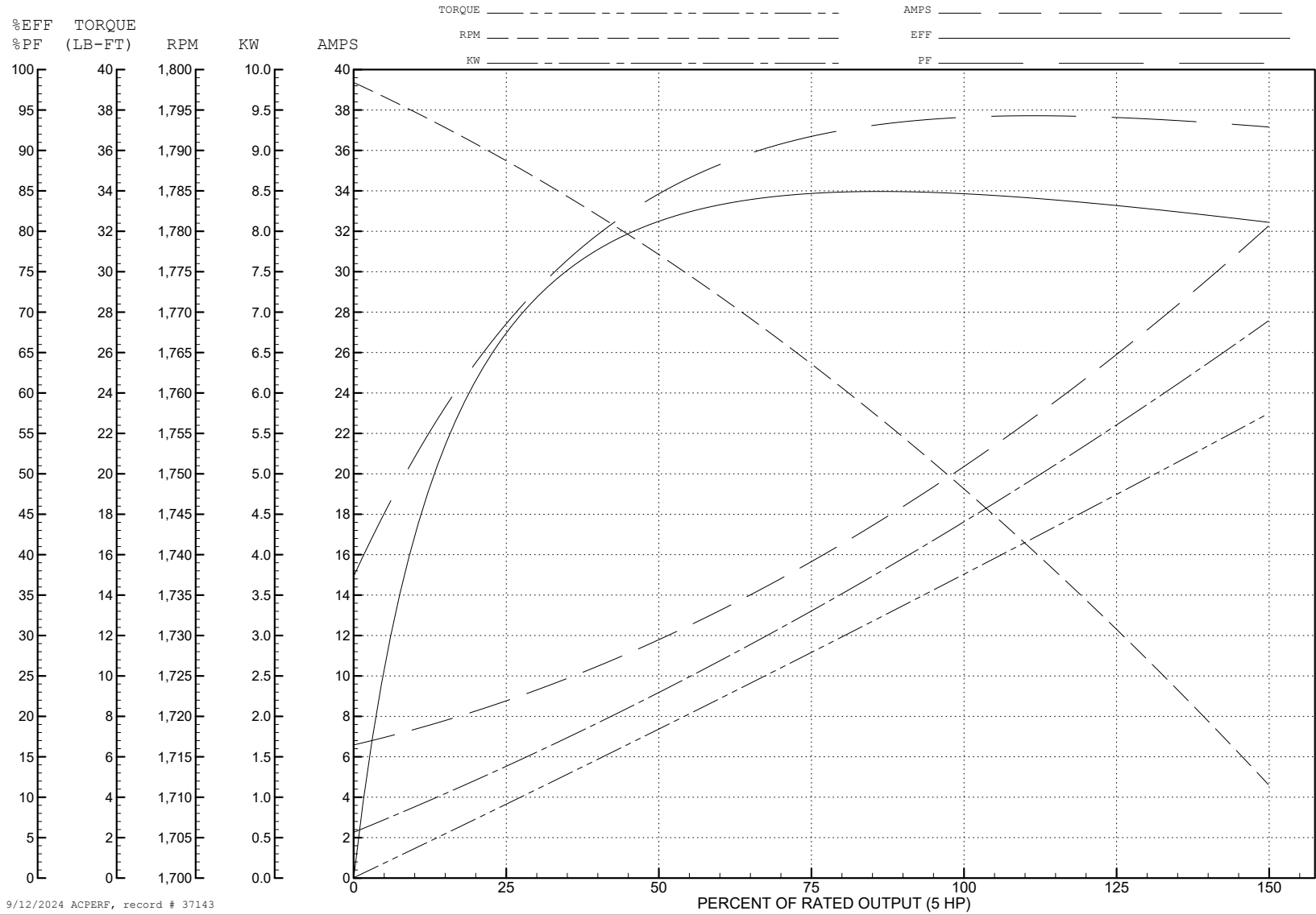
ABB Motors and Mechanical Inc.

WINDING # 37WGT877

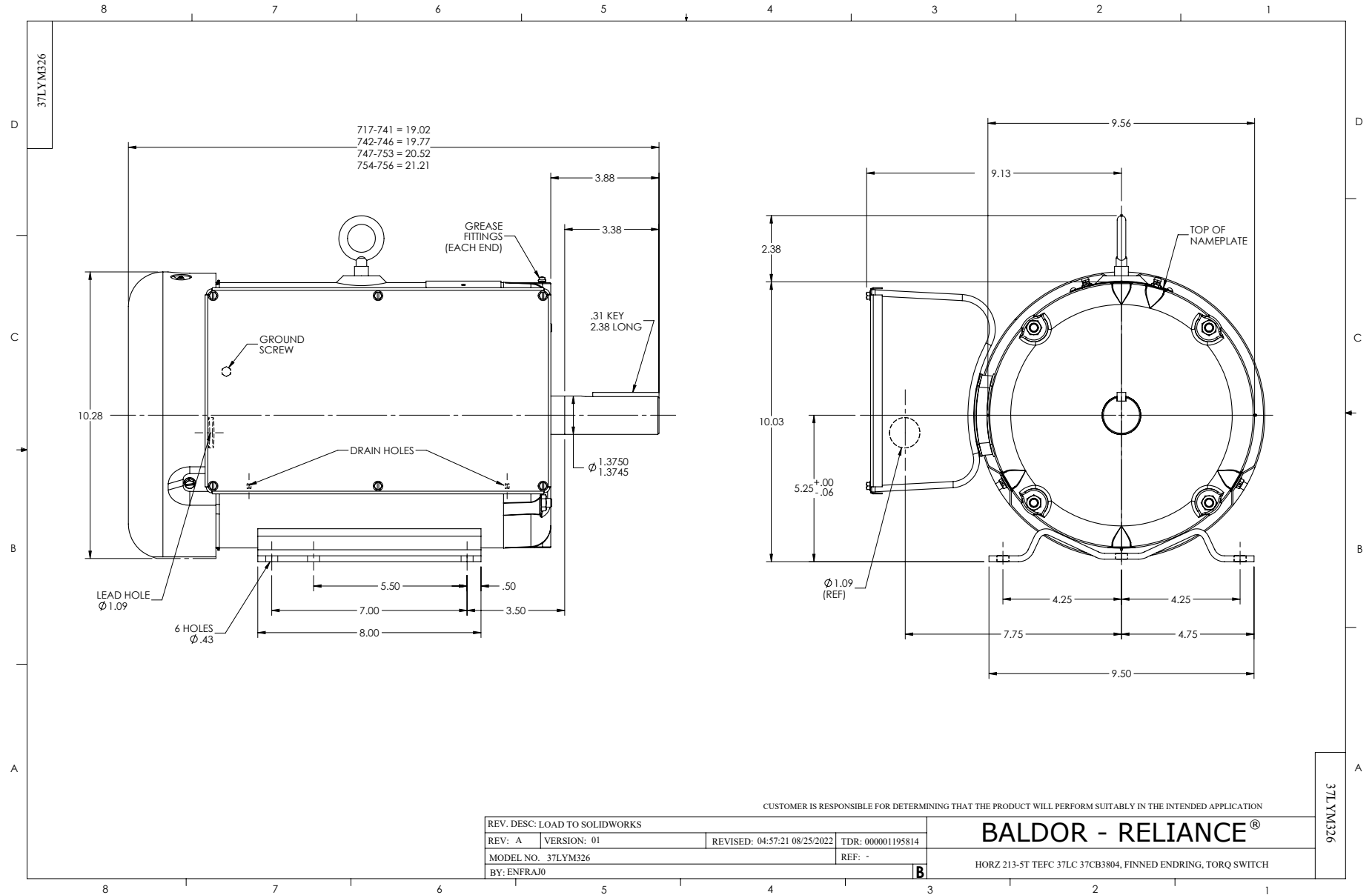
Typical performance - not guaranteed values.

5 HP 1 PH 60 HZ 1750 RPM 230 V 3726LC

TORQUES (LB-FT): PO=40.3 PU=32 LR=46.2 LRA=137



9/12/2024 ACPERF, record # 37143



CD0086

