

BALDOR • RELIANCE

Customer information packet

L3705

3HP, 1725RPM, 1PH, 60HZ, 215, 3735LC, TEFC, F1

Class - None

Division - Not Applicable

Specifications

Enclosure	TEFC
Frame	215
Frame Material	Steel
Frequency	60.00 Hz
Motor Letter Type	Cap Start, Cap Run
Output @ Frequency	3.000 HP @ 60 HZ
Phase	1
Synchronous Speed @ Frequency	1800 RPM @ 60 HZ
Voltage @ Frequency	115.0 V @ 60 HZ 230.0 V @ 60 HZ
XP Class and Group	None
XP Division	Not Applicable
Agency Approvals	CSA UR
Ambient Temperature	40 °C
Auxillary Box	No Auxillary Box
Auxillary Box Lead Termination	None
Base Indicator	Rigid
Bearing Grease Type	Polyrex EM (-20F +300F)
Blower	None
Current @ Voltage	30.000 A @ 115.0 V 15.000 A @ 208.0 V 14.000 A @ 230.0 V
Design Code	L
Drip Cover	No Drip Cover
Duty Rating	CONT
Efficiency @ 100% Load	80.0 %
Electrically Isolated Bearing	Not Electrically Isolated
Feedback Device	NO FEEDBACK
Front Face Code	Standard
Front Shaft Indicator	None
Heater Indicator	No Heater

Part detail

Revision	AL
Type	AC
Mech. spec.	37C011
Base	
Status	PRD/A
Elec. spec.	37WGX229
Layout	37LYC011
Eff. date	07-17-2019
CD Diagram	CD0076
Poles	04
Leads	8#14
Proprietary	False
Created date	01-01-0001

High Voltage Full Load Amps	14.0 a
Insulation Class	F
Inverter Code	Not Inverter
KVA Code	K
Lifting Lugs	Standard Lifting Lugs
Locked Bearing Indicator	No Locked Bearing
Motor Lead Exit	Ko Box
Motor Lead Quantity/Wire Size	8 @ 14 AWG
Motor Lead Termination	Flying Leads
Motor Standards	NEMA
Motor Type	3735LC
Mounting Arrangement	F1
Number of Poles	4
Overall Length	17.51 IN
Power Factor	90
Product Family	General Purpose
Pulley End Bearing Type	Ball
Pulley Face Code	Standard
Pulley Shaft Indicator	Standard
Rodent Screen	None
Service Factor	1.15
Shaft Diameter	1.125 IN
Shaft Extension Location	Pulley End
Shaft Ground Indicator	No Shaft Grounding
Shaft Rotation	Reversible
Shaft Slinger Indicator	No Slinger
Speed	1725 rpm
Speed Code	Single Speed
Starting Method	Direct on line
Thermal Device - Bearing	None
Thermal Device - Winding	None
Vibration Sensor Indicator	No Vibration Sensor
Winding Thermal 1	None
Winding Thermal 2	None

Nameplate

NP1256L									
CAT.NO.	L3705								
SPEC.	37C11X229								
HP	3								
VOLTS	115/230								
AMP	30/14								
RPM	1725								
FRAME	215		HZ	60		PH	1		
SER.F.	1.15	CODE	K	DES	L	CLASS	F		
NEMA-NOM-EFF	80	PF	90						
RATING	40C AMB-CONT								
CC			USABLE AT 208V				15		
DE	6307	ODE	6206						
ENCL	TEFC	SN							

Accessories

Part number	Description	Multiplier
37-3301	C FACE KIT	P1

AC Induction Motor Performance Data

Record # 61379

Typical performance - not guaranteed values

Winding: 37WGX229-R005		Type: 3735LC	Enclosure: TEFC		
Nameplate Data			230 V, 60 Hz: High Voltage Connection		
Rated Output (HP)	3		Full Load Torque	9.1 LB-FT	
Volts	115/230		Start Configuration	direct on line	
Full Load Amps	30/14		Breakdown Torque	24 LB-FT	
R.P.M.	1725		Pull-up Torque	20 LB-FT	
Hz	60 Phase	1	Locked-rotor Torque	45 LB-FT	
NEMA Design Code	L	KVA Code	K	Starting Current	110 A
Service Factor (S.F.)	1.15		No-load Current	5 A	
NEMA Nom. Eff.	80	Power Factor	90	Line-line Res. @ 25°C	0.581 Ω A Ph 2.08 Ω B Ph
Rating - Duty	40C AMB-CONT		Temp. Rise @ Rated Load	56°C	
S.F. Amps			Temp. Rise @ S.F. Load	74°C	

Load Characteristics 230 V, 60 Hz, 3 HP

% of Rated Load	25	50	75	100	125	150	S.F.
Power Factor	64	80	86	90	91	92	91
Efficiency	61.3	74.6	79.2	80.7	80.4	79	80.5
Speed	1784	1771	1756	1740	1722	1701	1729
Line amperes	6.2	8.2	10.7	13.5	16.6	20.2	15.4

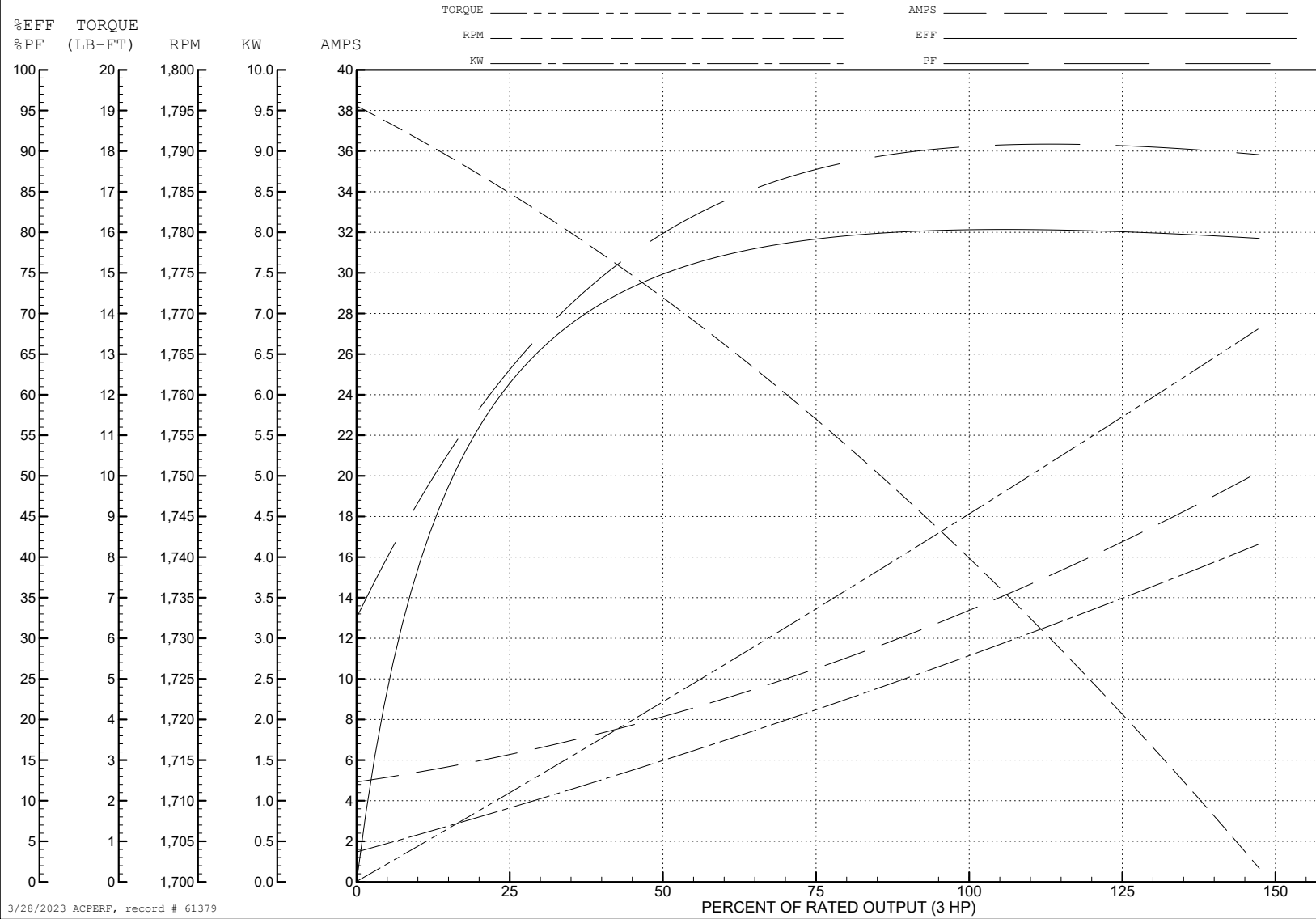
ABB Motors and Mechanical Inc.

WINDING # 37WGX229

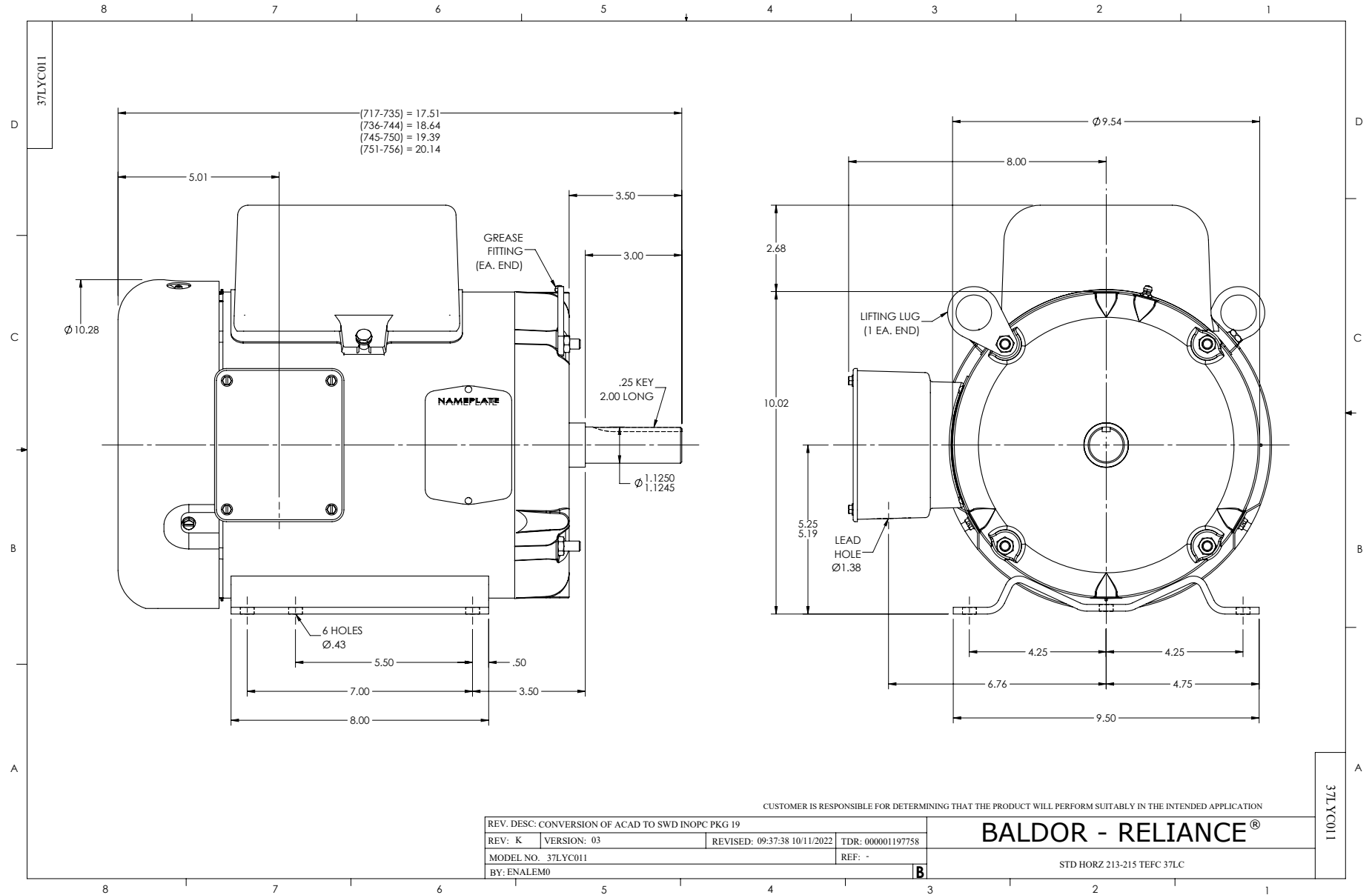
Typical performance - not guaranteed values.

3 HP 1 PH 60 HZ 1725 RPM 230 V 3735LC

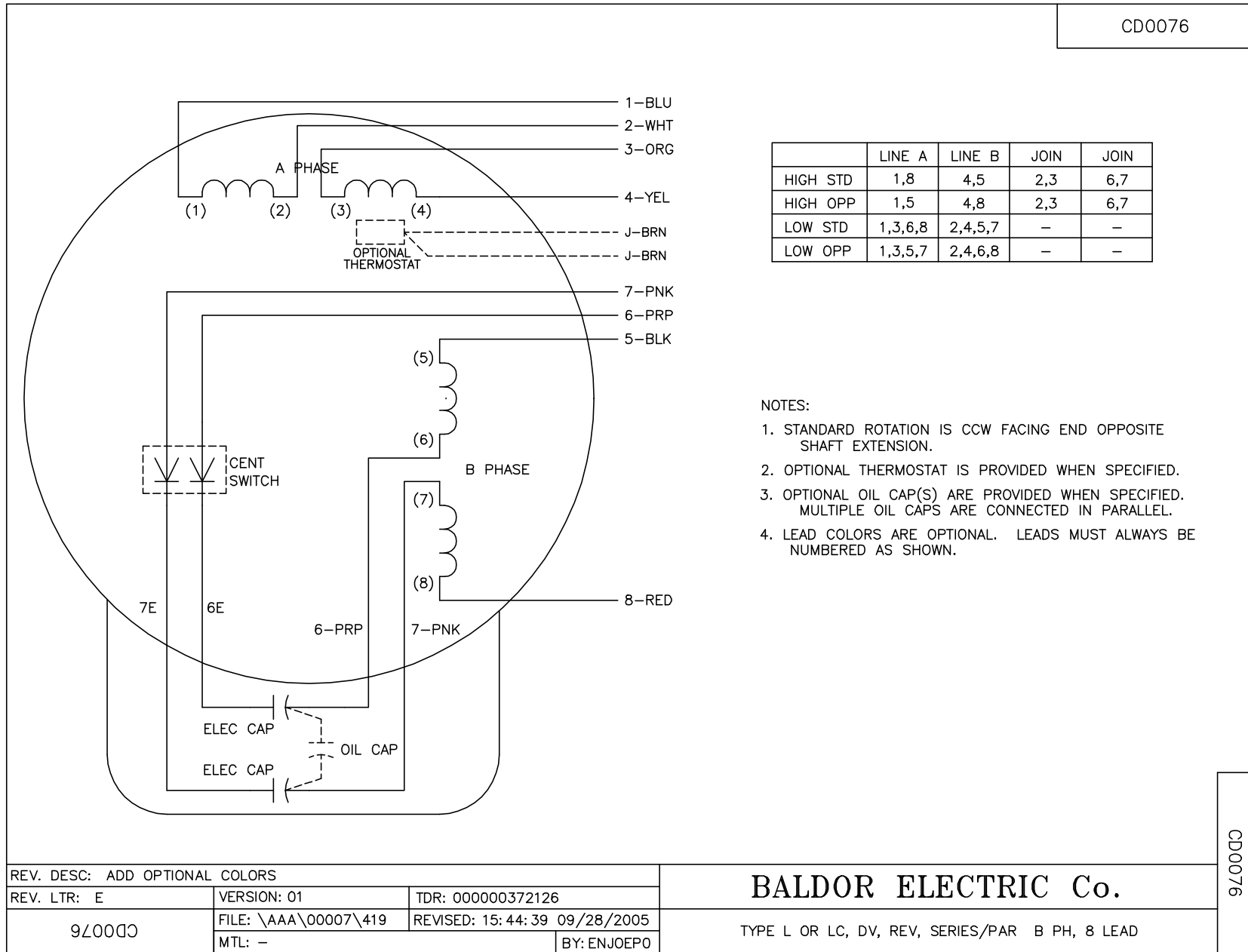
TORQUES (LB-FT): PO=24 PU=20 LR=45 LRA=110



3/28/2023 ACPERF, record # 61379



CD0076



REV. DESC: ADD OPTIONAL COLORS			
REV. LTR: E	VERSION: 01	TDR: 000000372126	
9Z0000	FILE: \AAA\00007\419	REVISED: 15:44:39 09/28/2005	
	MTL: -	BY: ENJOEPO	

BALDOR ELECTRIC Co.

TYPE L OR LC, DV, REV, SERIES/PAR B PH, 8 LEAD

CD0076