

BALDOR • RELIANCE

Customer information packet

L3703

2HP, 1165RPM, 1PH, 60HZ, 3728LC, N

Class - None

Division - Not Applicable

Specifications

Enclosure	TEFC
Frame	213
Frame Material	Steel
Frequency	60.00 Hz
Motor Letter Type	Cap Start, Cap Run
Output @ Frequency	2.000 HP @ 60 HZ
Phase	1
Synchronous Speed @ Frequency	1200 RPM @ 60 HZ
Voltage @ Frequency	115.0 V @ 60 HZ 230.0 V @ 60 HZ
XP Class and Group	None
XP Division	Not Applicable
Agency Approvals	CSA UR
Ambient Temperature	40 °C
Auxillary Box	No Auxillary Box
Auxillary Box Lead Termination	None
Base Indicator	Rigid
Bearing Grease Type	Polyrex EM (-20F +300F)
Blower	None
Current @ Voltage	10.500 A @ 230.0 V 11.200 A @ 208.0 V 23.000 A @ 115.0 V
Design Code	L
Drip Cover	No Drip Cover
Duty Rating	CONT
Efficiency @ 100% Load	74.0 %
Electrically Isolated Bearing	Not Electrically Isolated
Feedback Device	NO FEEDBACK
Front Shaft Indicator	None
Heater Indicator	No Heater
High Voltage Full Load Amps	10.5 a

Part detail

Revision	B
Type	AC
Mech. spec.	37C011
Base	
Status	PRD/A
Elec. spec.	37WGW005
Layout	37LYC011
Eff. date	04-12-2021
CD Diagram	CD0076
Poles	06
Leads	8#14
Proprietary	False
Created date	12-16-2020

Insulation Class	F
Inverter Code	Not Inverter
KVA Code	J
Lifting Lugs	Standard Lifting Lugs
Locked Bearing Indicator	No Locked Bearing
Motor Lead Quantity/Wire Size	8 @ 14 AWG
Motor Lead Termination	Flying Leads
Motor Standards	NEMA
Motor Type	3728LC
Mounting Arrangement	F1
Number of Poles	6
Overall Length	17.51 IN
Power Factor	87
Product Family	General Purpose
Pulley End Bearing Type	Ball
Pulley Face Code	Standard
Pulley Shaft Indicator	Standard
Rodent Screen	None
Service Factor	1.00
Shaft Diameter	1.125 IN
Shaft Ground Indicator	No Shaft Grounding
Shaft Rotation	Reversible
Shaft Slinger Indicator	No Slinger
Speed	1165 rpm
Speed Code	Single Speed
Starting Method	Direct on line
Thermal Device - Bearing	None
Thermal Device - Winding	None
Vibration Sensor Indicator	No Vibration Sensor
Winding Thermal 1	None
Winding Thermal 2	None

Nameplate

NP1256L									
CAT.NO.	L3703								
SPEC.	37C11W005								
HP	2								
VOLTS	115/230								
AMP	23/10.5								
RPM	1165								
FRAME	213		HZ	60		PH	1		
SER.F.	1.00	CODE	J	DES	L	CLASS	F		
NEMA-NOM-EFF	74	PF	87						
RATING	40C AMB-CONT								
CC			USABLE AT 208V				11.2		
DE	6307	ODE	6206						
ENCL	TEFC	SN							

Accessories

Part number	Description	Multiplier
37-3301	C FACE KIT	P1

AC Induction Motor Performance Data

Record # 85888

Preliminary Data Sheet

Winding: 37WG005-R002		Type: 3728LC	Enclosure: TEFC	
Nameplate Data			115 V, 60 Hz: Low Voltage Connection	
Rated Output (HP)	2	Full Load Torque	9.01 LB-FT	
Volts	115/230	Start Configuration	direct on line	
Full Load Amps	23/10.5	Breakdown Torque	17.5 LB-FT	
R.P.M.	1165	Pull-up Torque	14 LB-FT	
Hz	60 Phase	Locked-rotor Torque	27.3 LB-FT	
NEMA Design Code	L KVA Code	Starting Current	108 A	
Service Factor (S.F.)	1	No-load Current	14.6 A	
NEMA Nom. Eff.	74 Power Factor	Line-line Res. @ 25°C	0.327 Ω A Ph 0.653 Ω B Ph	
Rating - Duty	40C AMB-CONT	Temp. Rise @ Rated Load	53°C	
		Locked-rotor Power Factor	96.8	
		Rotor inertia	0.689 lb-ft ²	

Load Characteristics 115 V, 60 Hz, 2 HP

% of Rated Load	25	50	75	100	125	150
Power Factor	33	51	63	71	75	77
Efficiency	63.8	75.8	79.5	80	78.8	75.9
Speed	1192	1185	1176	1167	1155	1139
Line amperes	15.3	16.9	19.5	22.9	27.3	33.1

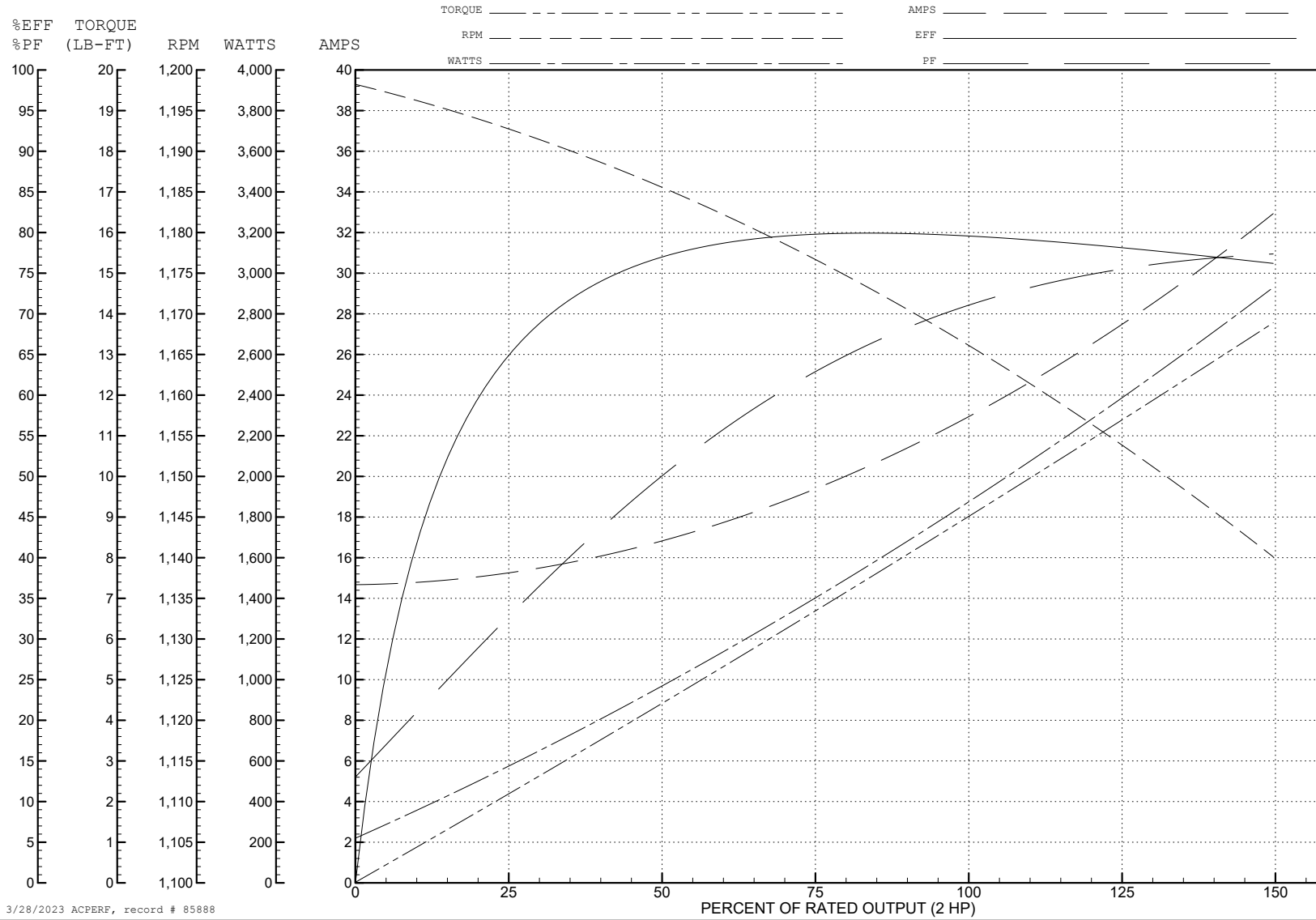
ABB Motors and Mechanical Inc.

WINDING # 37WGW005

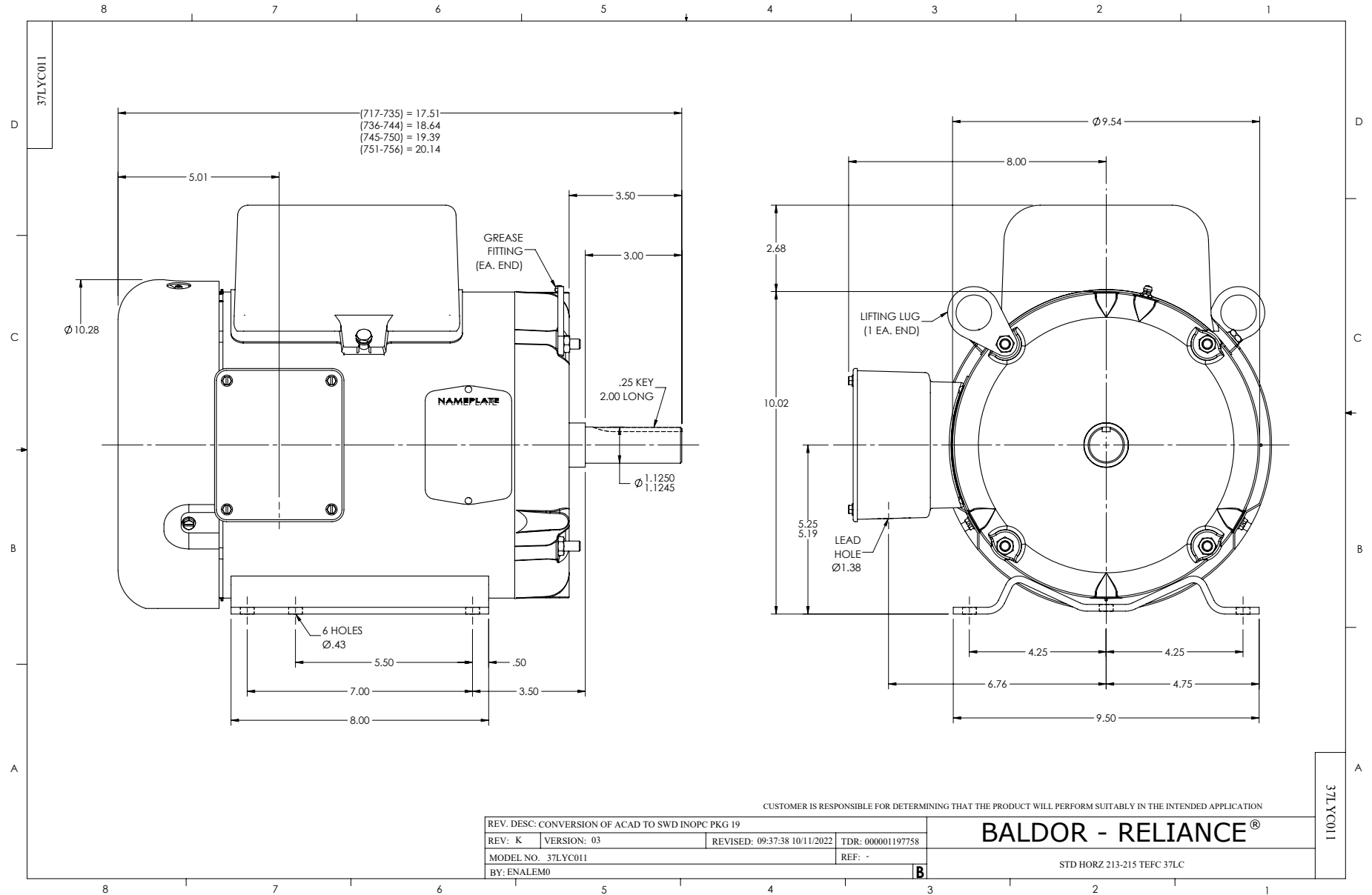
Typical performance - not guaranteed values.

2 HP 1 PH 60 HZ 1165 RPM 115 V 3728LC

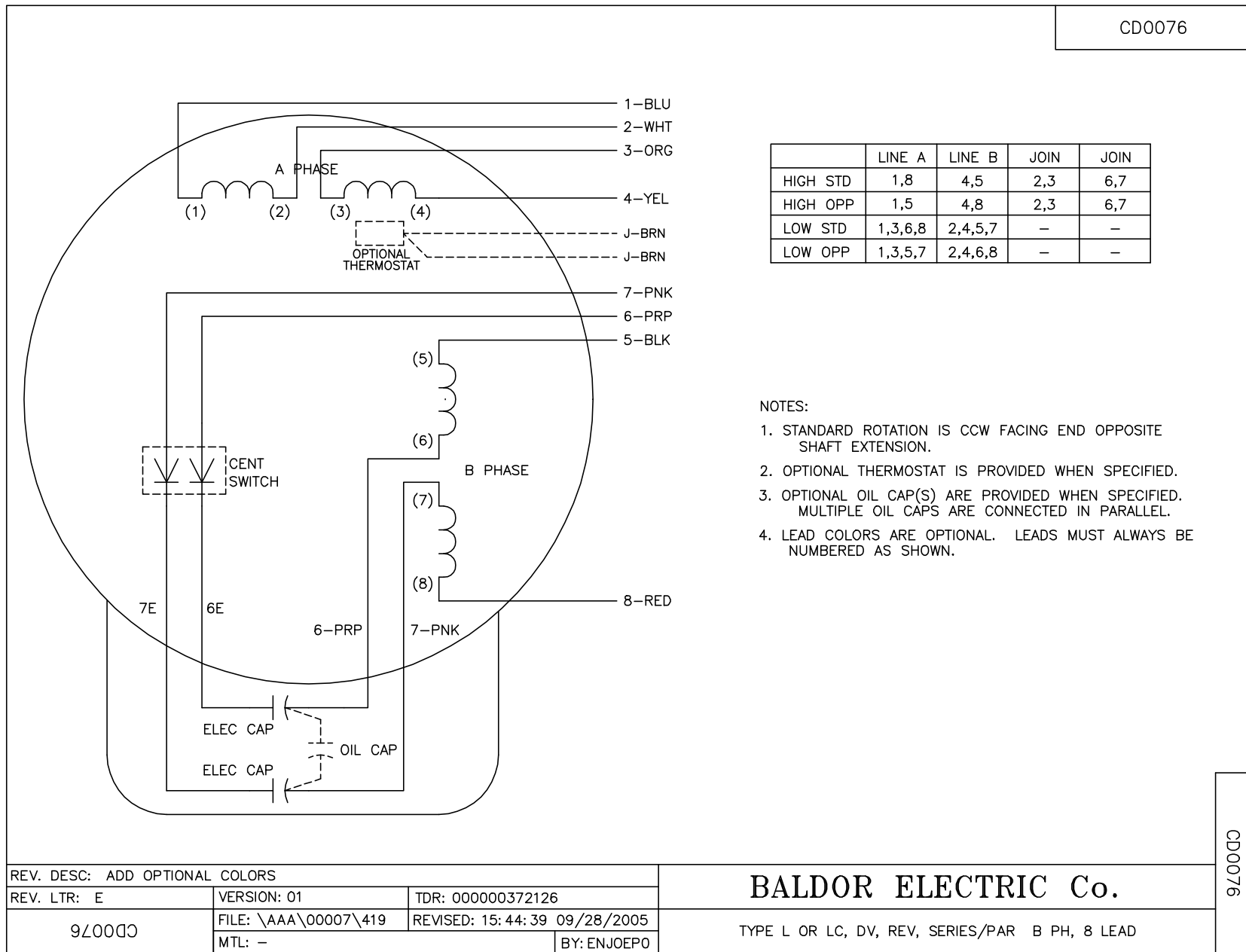
TORQUES (LB-FT): PO=17.5 PU=14 LR=27.3 LRA=108



3/28/2023 ACPERF, record # 85888



CD0076



NOTES:

1. STANDARD ROTATION IS CCW FACING END OPPOSITE SHAFT EXTENSION.
2. OPTIONAL THERMOSTAT IS PROVIDED WHEN SPECIFIED.
3. OPTIONAL OIL CAP(S) ARE PROVIDED WHEN SPECIFIED. MULTIPLE OIL CAPS ARE CONNECTED IN PARALLEL.
4. LEAD COLORS ARE OPTIONAL. LEADS MUST ALWAYS BE NUMBERED AS SHOWN.

REV. DESC: ADD OPTIONAL COLORS			
REV. LTR: E	VERSION: 01	TDR: 000000372126	
9Z0000	FILE: \AAA\00007\419	REVISED: 15:44:39 09/28/2005	
	MTL: -	BY: ENJOEPO	

BALDOR ELECTRIC Co.

TYPE L OR LC, DV, REV, SERIES/PAR B PH, 8 LEAD

CD0076