

BALDOR • RELIANCE

Customer information packet

L3613T

1.5HP, 1140RPM, 1PH, 60HZ, 184T, 3634LC, TEFC

Class - None

Division - Not Applicable

Specifications

Enclosure	TEFC
Frame	184T
Frame Material	Steel
Frequency	60.00 Hz
Haz Area Class and Group	None
Haz Area Division	Not Applicable
Motor Letter Type	Cap Start, Cap Run
Output @ Frequency	1.500 HP @ 60 HZ
Phase	1
Synchronous Speed @ Frequency	1200 RPM @ 60 HZ
Voltage @ Frequency	115.0 V @ 60 HZ 230.0 V @ 60 HZ
Agency Approvals	C UR US
Ambient Temperature	40 °C
Auxiliary Box	NO AUXILLARY BOX
Auxiliary Box Lead Termination	None
Base Indicator	Rigid
Bearing Grease Type	Polyrex EM (-20F +300F)
Blower	None
Current @ Voltage	16.400 A @ 115.0 V 8.200 A @ 230.0 V 8.600 A @ 208.0 V
Design Code	L
Drip Cover	No Drip Cover
Duty Rating	CONT
Efficiency @ 100% Load	73.0 %
Electrically Isolated Bearing	Not Electrically Isolated
Feedback Device	NO FEEDBACK
Front Face Code	Standard
Front Shaft Indicator	None
Heater Indicator	No Heater
High Voltage Full Load Amps	8.2 a

Part detail

Revision	AZ
Type	AC
Mech. spec.	36E004
Base	
Status	PRD/A
Elec. spec.	36WGW839
Layout	36LYE004
Eff. date	07-17-2025
CD Diagram	CD0055
Poles	06
Leads	6#16
Proprietary	False
Created date	01-01-0001

Insulation Class	F
Inverter Code	Not Inverter
KVA Code	J
Lifting Lugs	Standard Lifting Lugs
Locked Bearing Indicator	No Locked Bearing
Motor Lead Exit	Ko Box
Motor Lead Quantity/Wire Size	6 @ 16 AWG
Motor Lead Termination	Flying Leads
Motor Standards	NEMA
Motor Type	3634LC
Mounting Arrangement	F1
Number of Poles	6
Overall Length	16.56 IN
Power Factor	81
Product Family	General Purpose
Pulley End Bearing Type	Ball
Pulley Face Code	Standard
Pulley Shaft Indicator	Standard
Rodent Screen	None
Service Factor	1.15
Shaft Diameter	1.125 IN
Shaft Extension Location	Pulley End
Shaft Ground Indicator	No Shaft Grounding
Shaft Rotation	Reversible
Shaft Slinger Indicator	No Slinger
Speed	1140 rpm
Speed Code	Single Speed
Starting Method	Direct on line
Thermal Device - Bearing	None
Thermal Device - Winding	None
Vibration Sensor Indicator	No Vibration Sensor
Winding Thermal 1	None
Winding Thermal 2	None

Nameplate

NP1256L									
CAT.NO.	L3613T								
SPEC.	36E04W839								
HP	1.5								
VOLTS	115/230								
AMP	16.4/8.2								
RPM	1140								
FRAME	184T		HZ	60		PH	1		
SER.F.	1.15	CODE	J	DES	L	CLASS	F		
NEMA-NOM-EFF	73	PF	81						
RATING	40C AMB-CONT								
CC									
DE	6206		ODE	6205					
ENCL	TEFC	SN							

Accessories

Part number	Description	Multiplier
36-3301	C FACE KIT	A8
36EP1304A62SP	FLANGE MTD ENDPLATE 182-4TD -ENCL (LESS	A8

AC Induction Motor Performance Data

Record # 44641

Typical performance - not guaranteed values

Winding: 36WGW839-R001		Type: 3634LC	Enclosure: TEFC	
Nameplate Data			230 V, 60 Hz: High Voltage Connection	
Rated Output (HP)	1.5	Full Load Torque	6.8 LB-FT	
Volts	115/230	Start Configuration	direct on line	
Full Load Amps	16.4/8.2	Breakdown Torque	16 LB-FT	
R.P.M.	1140	Pull-up Torque	11 LB-FT	
Hz	60 Phase	Locked-rotor Torque	15 LB-FT	
NEMA Design Code	L KVA Code	Starting Current	84 A	
Service Factor (S.F.)	1.15	No-load Current	4.1 A	
NEMA Nom. Eff.	73 Power Factor	Line-line Res. @ 25°C	0.403 Ω A Ph 1.01 Ω B Ph	
Rating - Duty	40C AMB-CONT	Temp. Rise @ Rated Load	76°C	
S.F. Amps		Temp. Rise @ S.F. Load	90°C	
		Rotor inertia	0.319 LB-FT ²	

Load Characteristics 230 V, 60 Hz, 1.5 HP

% of Rated Load	25	50	75	100	125	150	S.F.
Power Factor	53	68	76	81	81	80	81
Efficiency	51.4	66.5	72.4	74.3	73.8	70.7	74
Speed	1188	1179	1168	1156	1140	1117	1146
Line amperes	4.6	5.5	6.5	8.2	10	12.5	9.2

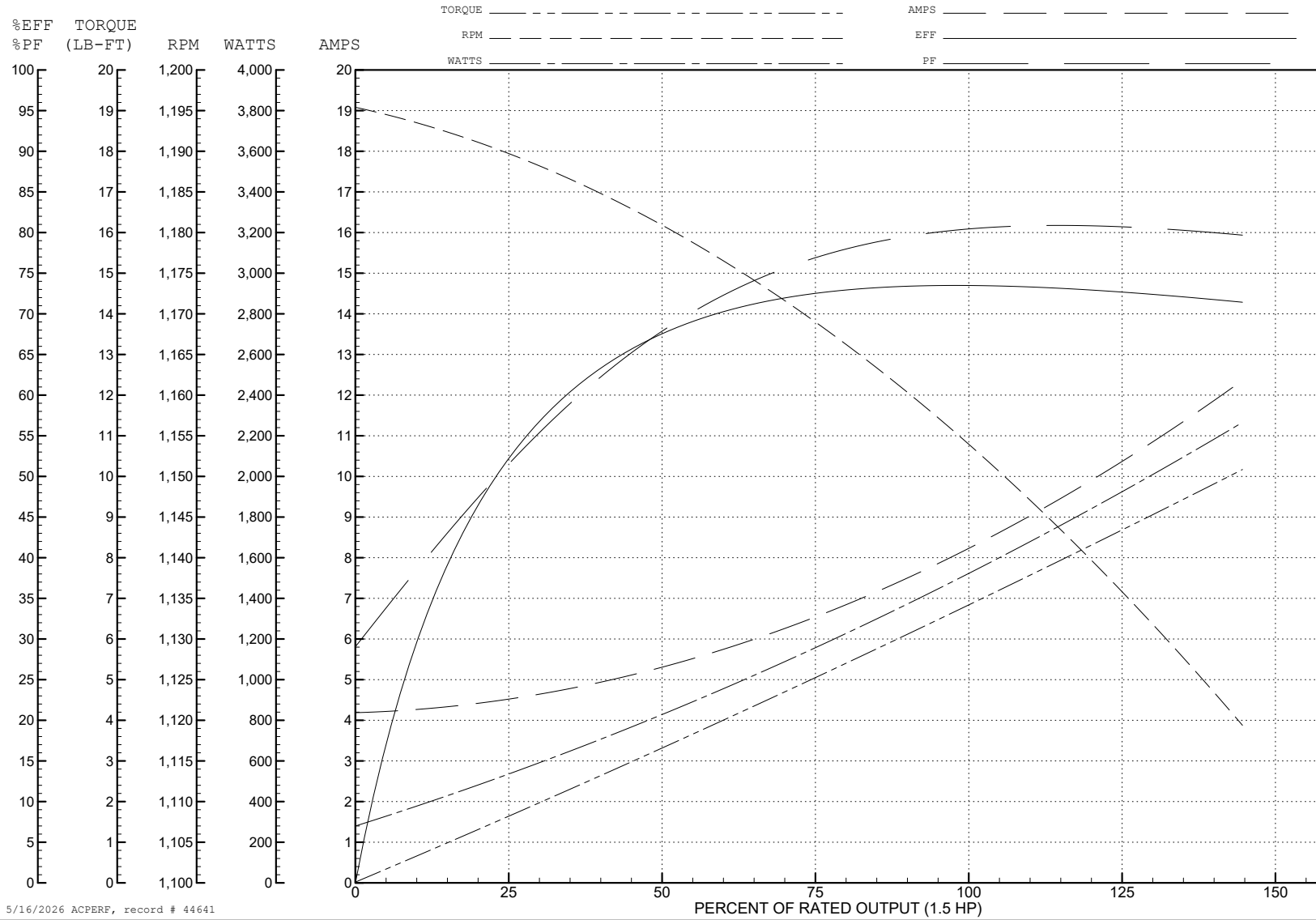
ABB Motors and Mechanical Inc.

WINDING # 36WGW839

Typical performance - not guaranteed values.

1.5 HP 1 PH 60 HZ 1140 RPM 230 V 3634LC

TORQUES (LB-FT): PO=16 PU=11 LR=15 LRA=84



5/16/2026 ACPERF, record # 44641

AC Induction Motor Performance Data

Record # 44642

Typical performance - not guaranteed values

Winding: 36WGW839-R001		Type: 3634LC	Enclosure: TEFC		
Nameplate Data			115 V, 60 Hz: Low Voltage Connection		
Rated Output (HP)	1.5	Full Load Torque	6.8 LB-FT		
Volts	115/230	Start Configuration	direct on line		
Full Load Amps	16.4/8.2	Breakdown Torque	16 LB-FT		
R.P.M.	1140	Pull-up Torque	11 LB-FT		
Hz	60 Phase	1	Locked-rotor Torque	15 LB-FT	
NEMA Design Code	L	KVA Code	J	Starting Current	84 A
Service Factor (S.F.)	1.15	No-load Current	8.2 A		
NEMA Nom. Eff.	73	Power Factor	81	Line-line Res. @ 25°C	0.403 Ω A Ph 1.01 Ω B Ph
Rating - Duty	40C	AMB-CONT	Temp. Rise @ Rated Load	76°C	
S.F. Amps			Temp. Rise @ S.F. Load	90°C	
			Rotor inertia	0.319 LB-FT ²	

Load Characteristics 115 V, 60 Hz, 1.5 HP

% of Rated Load	25	50	75	100	125	150	S.F.
Power Factor	53	68	76	81	81	80	81
Efficiency	51.4	66.5	72.4	74.3	73.8	70.7	74
Speed	1188	1179	1168	1156	1140	1117	1146
Line amperes	9.2	10.9	13.3	16.2	19.9	24.9	18.4

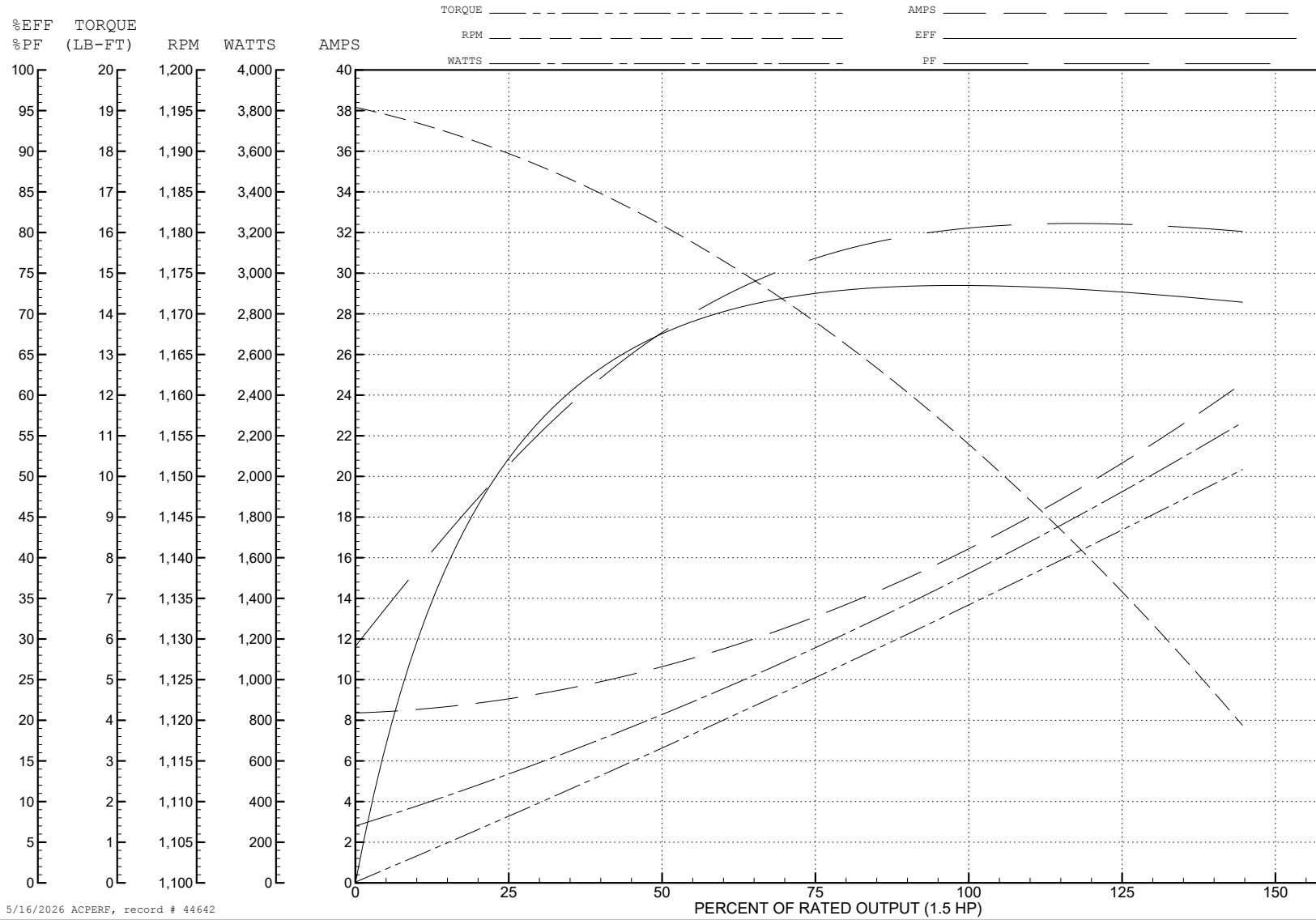
ABB Motors and Mechanical Inc.

WINDING # 36WGW839

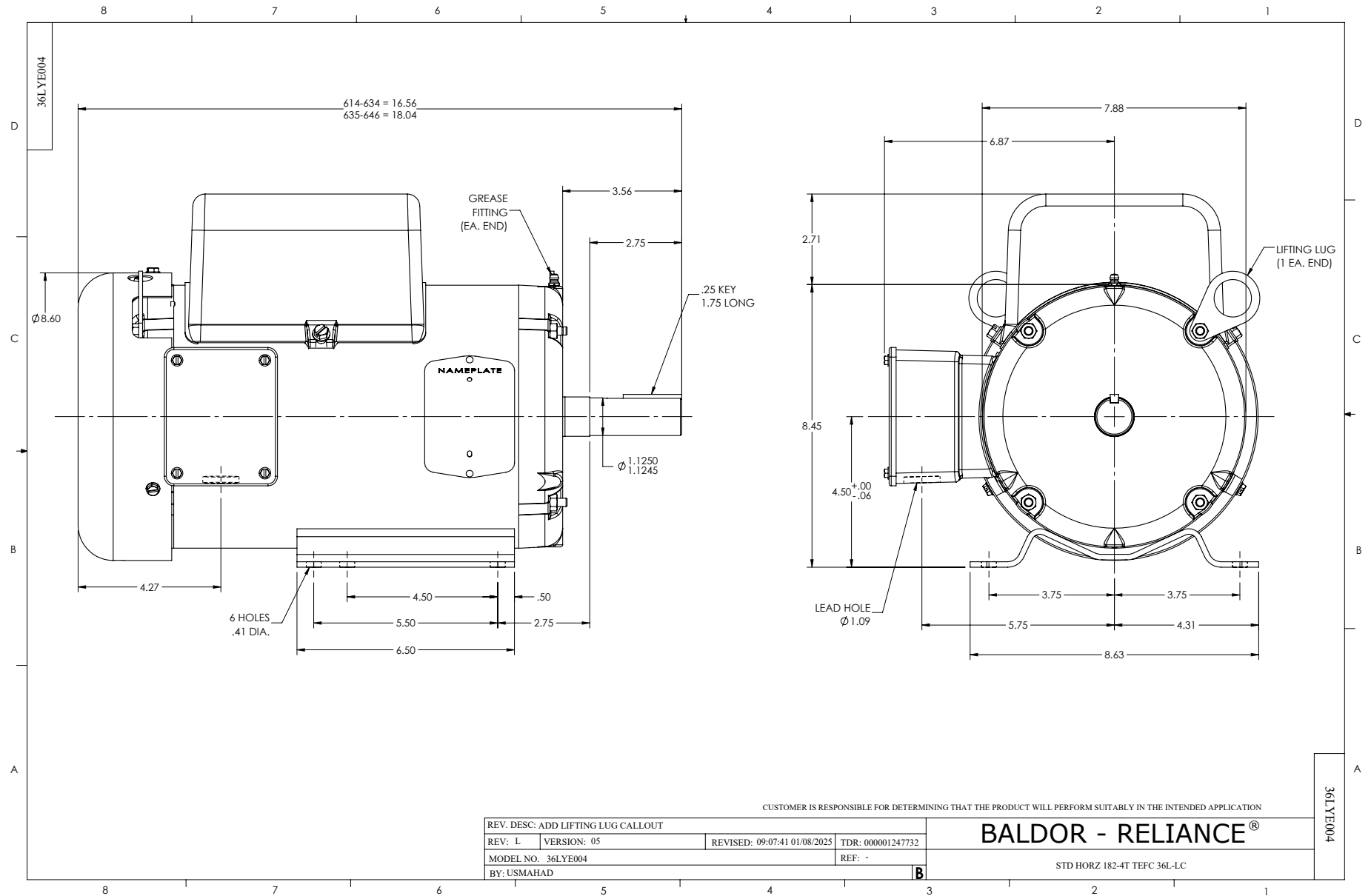
Typical performance - not guaranteed values.

1.5 HP 1 PH 60 HZ 1140 RPM 115 V 3634LC

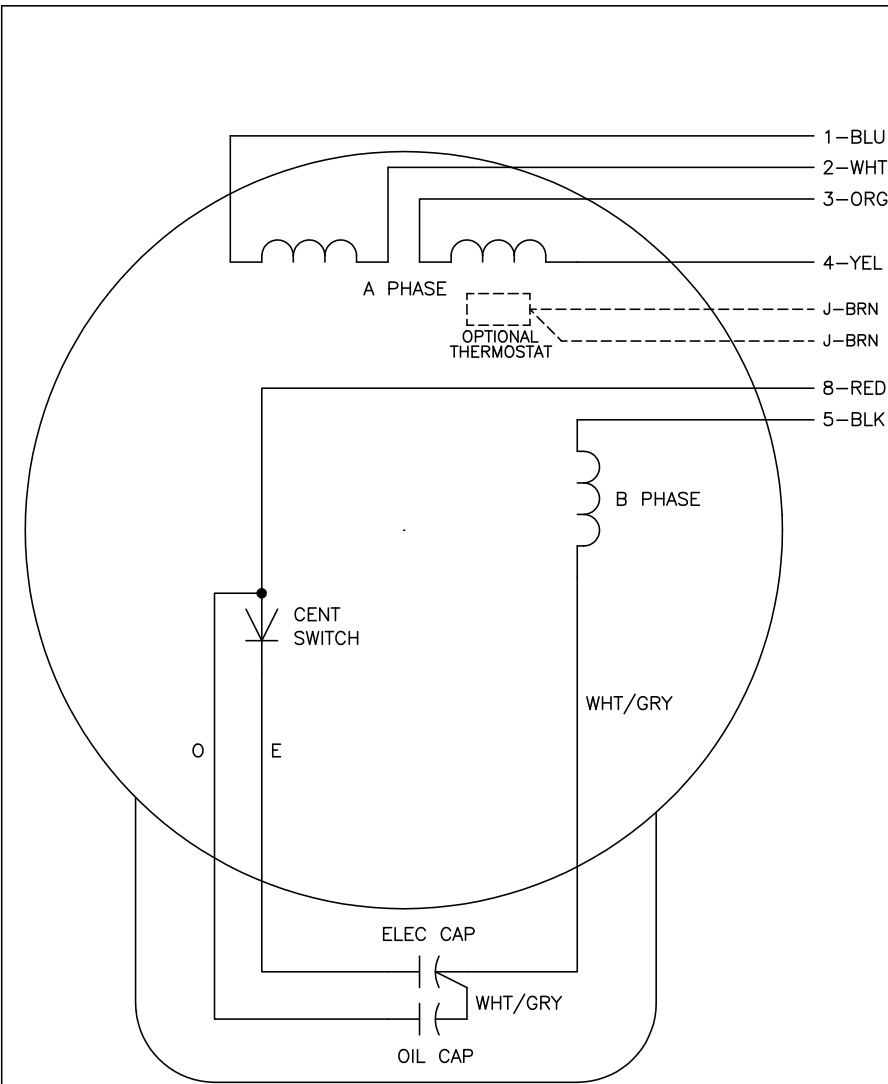
TORQUES (LB-FT): PO=16 PU=11 LR=15 LRA=84



5/16/2026 ACPERF, record # 44642



CD0055



	LINE A	LINE B	JOIN
HIGH STD	1	4,5	2,3,8
HIGH OPP	1	4,8	2,3,5
LOW STD	1,3,8	2,4,5	-
LOW OPP	1,3,5	2,4,8	-

NOTES:

1. STANDARD ROTATION IS CCW FACING END OPPOSITE SHAFT EXTENSION.
2. OPTIONAL THERMOSTAT IS PROVIDED WHEN SPECIFIED.
3. MULTIPLE CAPACITORS ARE CONNECTED IN PARALLEL UNLESS OTHERWISE SPECIFIED.
4. LEAD COLORS ARE OPTIONAL. LEADS MUST ALWAYS BE NUMBERED AS SHOWN.

REV. DESC: REVISE TO SHOW OPTIONAL COLORS			
REV. LTR: D	BY: JLP	REVISED: 04/08/99 1:17	TDR: 0178636
C00000		FILE: AAA00007414	MDL: -
		MTL: -	

BALDOR ELECTRIC Co.

TYPE LC, DV, REV, 6 LEADS

CD0055