

# ABB BALDOR RELIANCE III

---

## Customer information packet

L3605

2HP, 1725RPM, 1PH, 60HZ, 184, 3628L, TEFC, F1

Class - None

Division - Not Applicable

**Specifications**

<b>Enclosure</b>	TEFC
<b>Frame</b>	184
<b>Frame Material</b>	Steel
<b>Frequency</b>	60.00 Hz
<b>Haz Area Class and Group</b>	None
<b>Haz Area Division</b>	Not Applicable
<b>Motor Letter Type</b>	Cap Start, Induction Run
<b>Output @ Frequency</b>	2.000 HP @ 60 HZ
<b>Phase</b>	1
<b>Synchronous Speed @ Frequency</b>	1800 RPM @ 60 HZ
<b>Voltage @ Frequency</b>	115.0 V @ 60 HZ 230.0 V @ 60 HZ
<b>Agency Approvals</b>	CSA UR
<b>Ambient Temperature</b>	40 °C
<b>Auxiliary Box</b>	NO AUXILLARY BOX
<b>Auxiliary Box Lead Termination</b>	None
<b>Base Indicator</b>	Rigid
<b>Bearing Grease Type</b>	Polyrex EM (-20F +300F)
<b>Blower</b>	None
<b>Current @ Voltage</b>	23.000 A @ 115.0 V 11.700 A @ 208.0 V 11.500 A @ 230.0 V
<b>Design Code</b>	L
<b>Drip Cover</b>	No Drip Cover
<b>Duty Rating</b>	CONT
<b>Efficiency @ 100% Load</b>	75.5 %
<b>Electrically Isolated Bearing</b>	Not Electrically Isolated
<b>Feedback Device</b>	NO FEEDBACK
<b>Front Face Code</b>	Standard
<b>Front Shaft Indicator</b>	None
<b>Heater Indicator</b>	No Heater

**Part Detail**

<b>Revision</b>	AB
<b>Type</b>	AC
<b>Mech. spec.</b>	36C011
<b>Base</b>	
<b>Status</b>	PRD/A
<b>Elec. spec.</b>	36WGW223
<b>Layout</b>	36LYC011
<b>Eff. date</b>	05-09-2024
<b>CD Diagram</b>	CD0001
<b>Poles</b>	04
<b>Leads</b>	4#14 A PH,2#16 B PH
<b>Proprietary</b>	False
<b>Created date</b>	01-01-0001

High Voltage Full Load Amps	11.5 a
Insulation Class	F
Inverter Code	Not Inverter
KVA Code	H
Lifting Lugs	No Lifting Lugs
Locked Bearing Indicator	No Locked Bearing
Motor Lead Exit	Ko Box
Motor Lead Quantity/Wire Size	4 @ 14 AWG, A PH
Motor Lead Termination	Flying Leads
Motor Standards	NEMA
Motor Type	3628L
Mounting Arrangement	F1
Number of Poles	4
Overall Length	15.69 IN
Power Factor	74
Product Family	General Purpose
Pulley End Bearing Type	Ball
Pulley Face Code	Standard
Pulley Shaft Indicator	Standard
Rodent Screen	None
Service Factor	1.15
Shaft Diameter	0.875 IN
Shaft Extension Location	Pulley End
Shaft Ground Indicator	No Shaft Grounding
Shaft Rotation	Reversible
Shaft Slinger Indicator	No Slinger
Speed	1725 rpm
Speed Code	Single Speed
Starting Method	Direct on line
Thermal Device - Bearing	None
Thermal Device - Winding	None
Vibration Sensor Indicator	No Vibration Sensor
Winding Thermal 1	None
Winding Thermal 2	None

**Nameplate**

<b>NP1256L</b>										
<b>CAT.NO.</b>	L3605									
<b>SPEC.</b>	36C11W223									
<b>HP</b>	2									
<b>VOLTS</b>	115/230									
<b>AMP</b>	23/11.5									
<b>RPM</b>	1725									
<b>FRAME</b>	184		<b>HZ</b>	60			<b>PH</b>	1		
<b>SER.F.</b>	1.15	<b>CODE</b>	H	<b>DES</b>	L	<b>CLASS</b>	F			
<b>NEMA-NOM-EFF</b>	75.5	<b>PF</b>	74							
<b>RATING</b>	40C AMB-CONT									
<b>CC</b>										
<b>DE</b>	6206	<b>ODE</b>	6205							
<b>ENCL</b>	TEFC	<b>SN</b>								

**Accessories**

<b>Part number</b>	<b>Description</b>	<b>Multiplier</b>
36-1037	C FACE KIT	A8
36EP1304A62SP	FLANGE MTD ENDPLATE 182-4TD -ENCL (LESS	A8

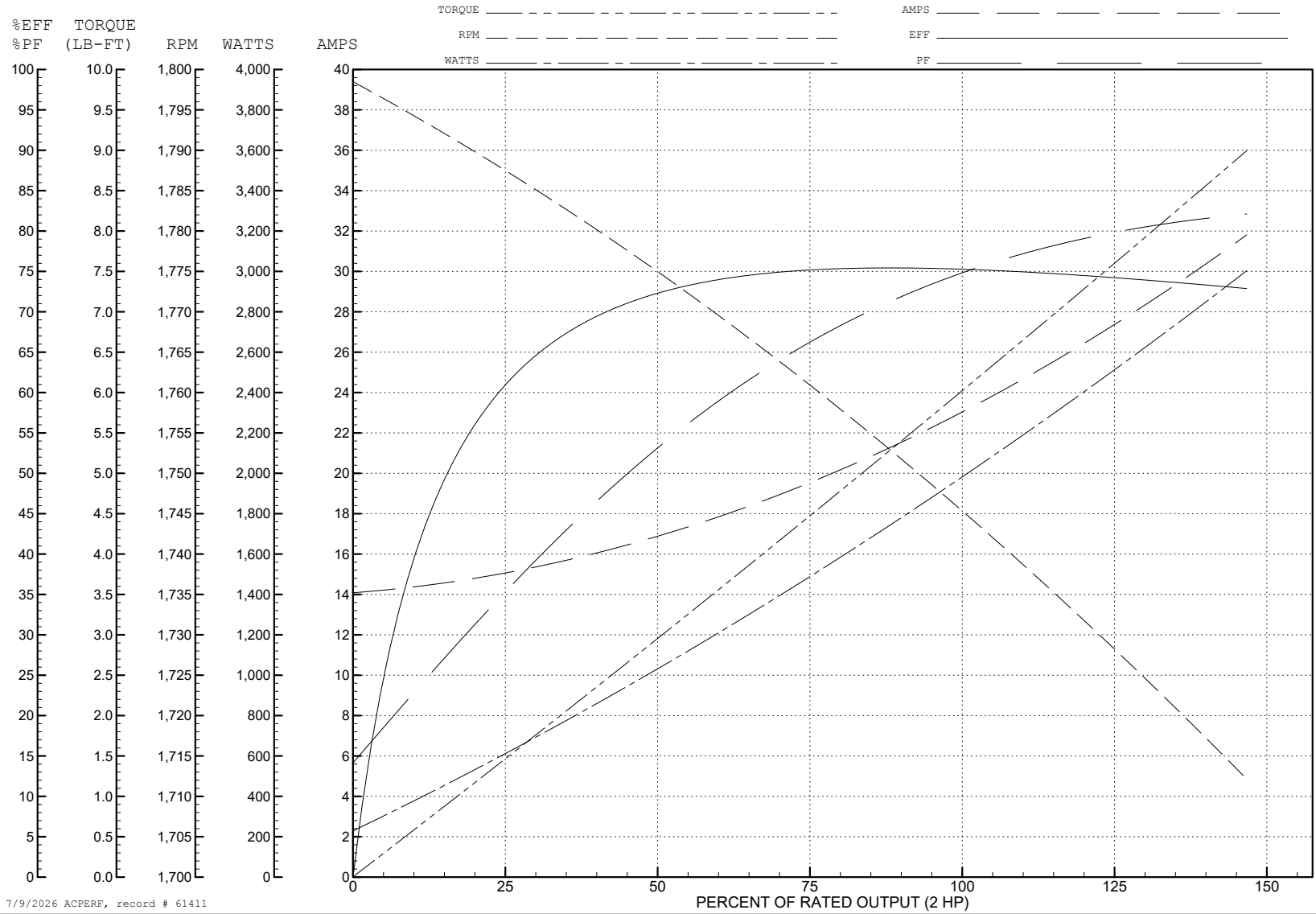
ABB Motors and Mechanical Inc.

WINDING # 36WG223

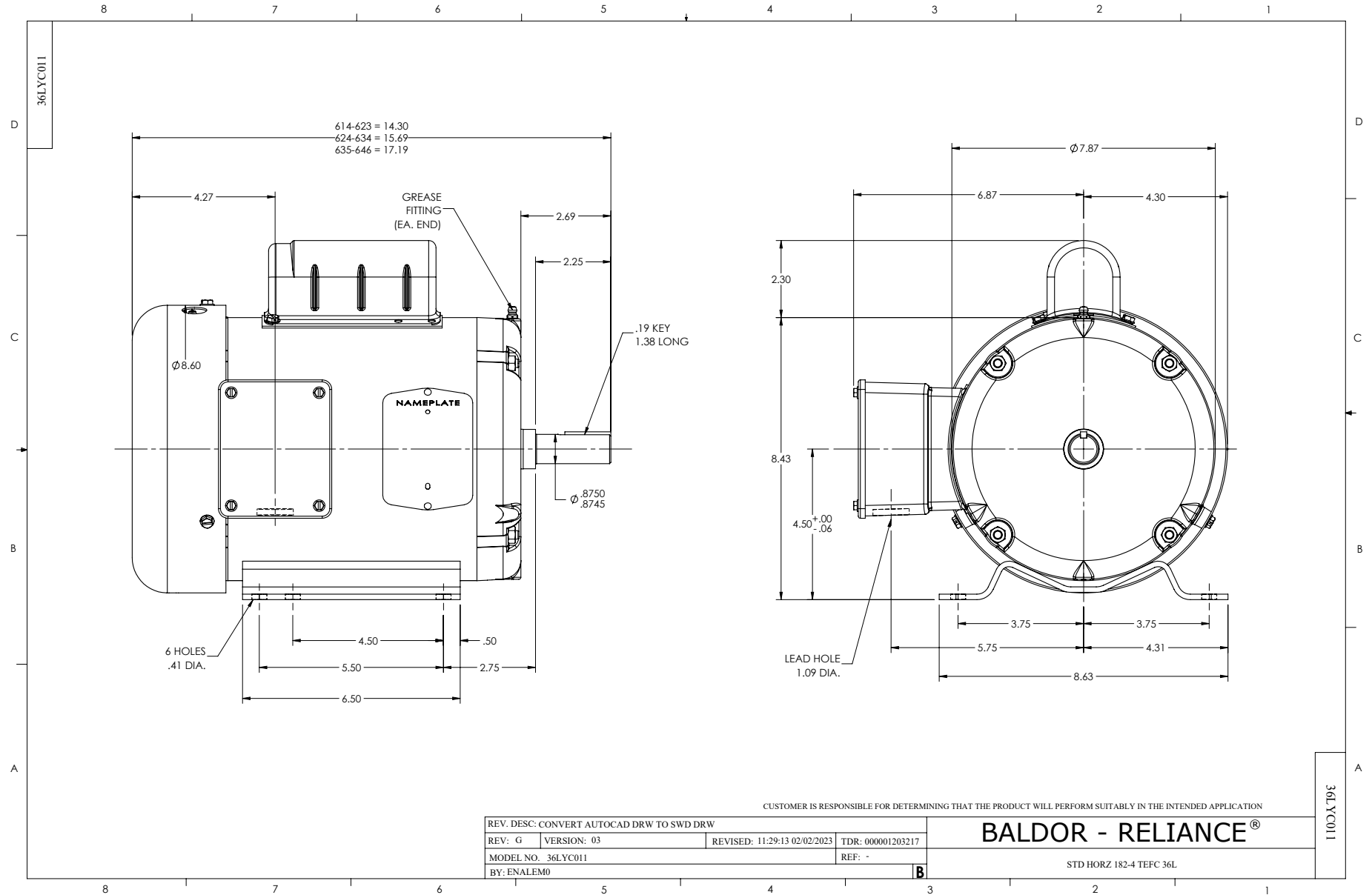
Typical performance - not guaranteed values.

2 HP 1 PH 60 HZ 1725 RPM 115 V 3628L

TORQUES (LB-FT): PO=17.4 PU=11.4 LR=14.4 LRA=142



7/9/2026 ACPERF, record # 61411



CUSTOMER IS RESPONSIBLE FOR DETERMINING THAT THE PRODUCT WILL PERFORM SUITABLY IN THE INTENDED APPLICATION

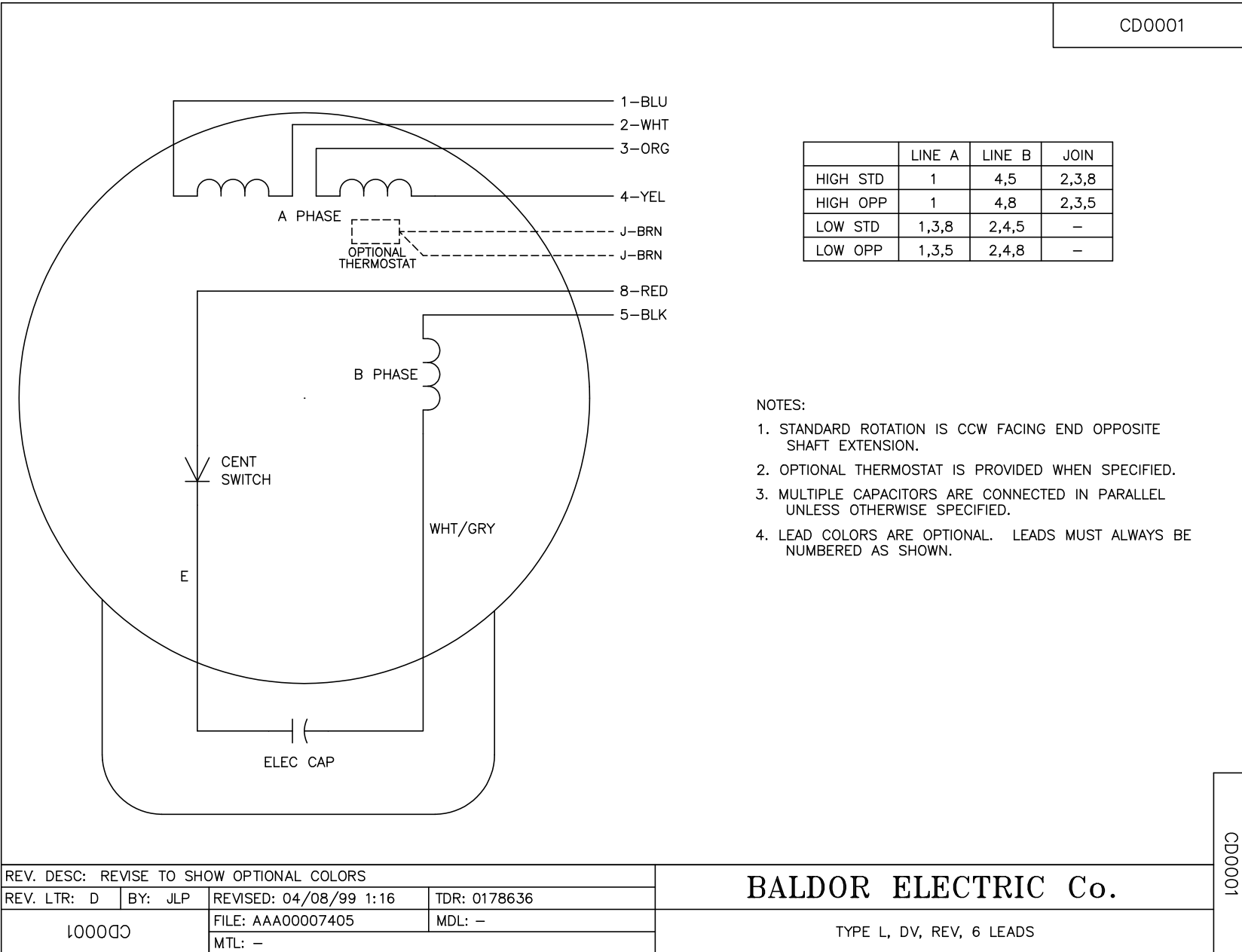
REV. DESC: CONVERT AUTOCAD DRW TO SWD DRW			
REV: G	VERSION: 03	REVISED: 11:29:13 02/02/2023	TDR: 000001203217
MODEL NO. 36LYC011		REF: -	
BY: ENALEM0			

**BALDOR - RELIANCE®**

STD HORZ 182-4 TEFC 36L

36LYC011

CD0001



CD0001

REV. DESC: REVISE TO SHOW OPTIONAL COLORS			
REV. LTR: D	BY: JLP	REVISED: 04/08/99 1:16	TDR: 0178636
100000		FILE: AAA00007405	MDL: -
		MTL: -	

**BALDOR ELECTRIC Co.**

TYPE L, DV, REV, 6 LEADS