



Customer information packet

L3516T

2HP, 1720RPM, 1PH, 60HZ, 145T, 3546LC, TEFC, F1

Class - None

Division - Not Applicable

Specifications

Enclosure	TEFC
Frame	145T
Frame Material	Steel
Frequency	60.00 Hz
Haz Area Class and Group	None
Haz Area Division	Not Applicable
Motor Letter Type	Cap Start, Cap Run
Output @ Frequency	2.000 HP @ 60 HZ
Phase	1
Synchronous Speed @ Frequency	1800 RPM @ 60 HZ
Voltage @ Frequency	115.0 V @ 60 HZ 230.0 V @ 60 HZ
Agency Approvals	CSA UR
Ambient Temperature	40 °C
Auxillary Box	No Auxillary Box
Auxillary Box Lead Termination	None
Base Indicator	Rigid
Bearing Grease Type	Polyrex EM (-20F +300F)
Blower	None
Current @ Voltage	8.200 A @ 230.0 V 18.200 A @ 115.0 V
Design Code	L
Drip Cover	No Drip Cover
Duty Rating	CONT
Efficiency @ 100% Load	80.0 %
Electrically Isolated Bearing	Not Electrically Isolated
Feedback Device	NO FEEDBACK
Front Shaft Indicator	None
Heater Indicator	No Heater
High Voltage Full Load Amps	8.2 a
Insulation Class	F

Part detail

Revision	H
Type	AC
Mech. spec.	35EE001
Base	
Status	PRD/A
Elec. spec.	35WGG243
Layout	35LYEE001
Eff. date	07-02-2024
CD Diagram	CD0016A01
Poles	04
Leads	4#16 A PH,3#18 B PH
Proprietary	False
Created date	08-01-2022

Inverter Code	Not Inverter
KVA Code	H
Lifting Lugs	No Lifting Lugs
Locked Bearing Indicator	No Locked Bearing
Motor Lead Quantity/Wire Size	4 @ 16 AWG, A PH
Motor Lead Termination	Flying Leads
Motor Standards	NEMA
Motor Type	3546LC
Mounting Arrangement	F1
Number of Poles	4
Overall Length	15.53 IN
Power Factor	90
Product Family	General Purpose
Pulley End Bearing Type	Ball
Pulley Face Code	Standard
Pulley Shaft Indicator	Standard
Rodent Screen	None
Service Factor	1.25
Shaft Diameter	0.875 IN
Shaft Ground Indicator	No Shaft Grounding
Shaft Rotation	Reversible
Shaft Slinger Indicator	No Slinger
Speed	1720 rpm
Speed Code	Single Speed
Starting Method	Direct on line
Thermal Device - Bearing	None
Thermal Device - Winding	None
Vibration Sensor Indicator	No Vibration Sensor
Winding Thermal 1	None
Winding Thermal 2	None

Nameplate

NP1256L									
CAT.NO.	L3516T								
SPEC.	35EE001G243								
HP	2								
VOLTS	115/230								
AMP	15.8/7.9								
RPM	1740								
FRAME	145T		HZ	60		PH	1		
SER.F.	1.15	CODE	J	DES	L	CLASS	F		
NEMA-NOM-EFF	80	PF	90						
RATING	40C AMB-CONT								
CC									
DE	6205		ODE	6203					
ENCL	TEFC	SN							

Accessories

Part number	Description	Multiplier
35-8762	C FACE KIT	A8

AC Induction Motor Performance Data

Record # 102617

Typical performance - not guaranteed values

Winding: 35WGG243-R001		Type: 3546LC	Enclosure: TEFC		
Nameplate Data			230 V, 60 Hz: High Voltage Connection		
Rated Output (HP)	2	Full Load Torque	6.107 LB-FT		
Volts	115/230	Start Configuration	direct on line		
Full Load Amps	15.8/7.9	Breakdown Torque	15.9 LB-FT		
R.P.M.	1740	Pull-up Torque	8.59 LB-FT		
Hz	60 Phase	1	Locked-rotor Torque	14.2 LB-FT	
NEMA Design Code	L	KVA Code	J	Starting Current	66.3 A
Service Factor (S.F.)	1.15	No-load Current	1.66 A		
NEMA Nom. Eff.	80	Power Factor	90	Line-line Res. @ 25°C	1.5479 Ω A Ph 1.0959 Ω B Ph
Rating - Duty	40C	AMB-CONT	Temp. Rise @ Rated Load	67°C	
S.F. Amps				Temp. Rise @ S.F. Load	75°C

Load Characteristics 230 V, 60 Hz, 2 HP

% of Rated Load	25	50	75	100	125	150	S.F.
Power Factor	92	98	99	99	99	99	99
Efficiency	62.5	78.2	82.8	83.4	81.6	77.9	82.3
Speed	1784.7	1771.4	1756.5	1738.4	1717	1691.1	1726
Line amperes	2.97	4.36	6.02	7.92	10.1	12.6	9.23

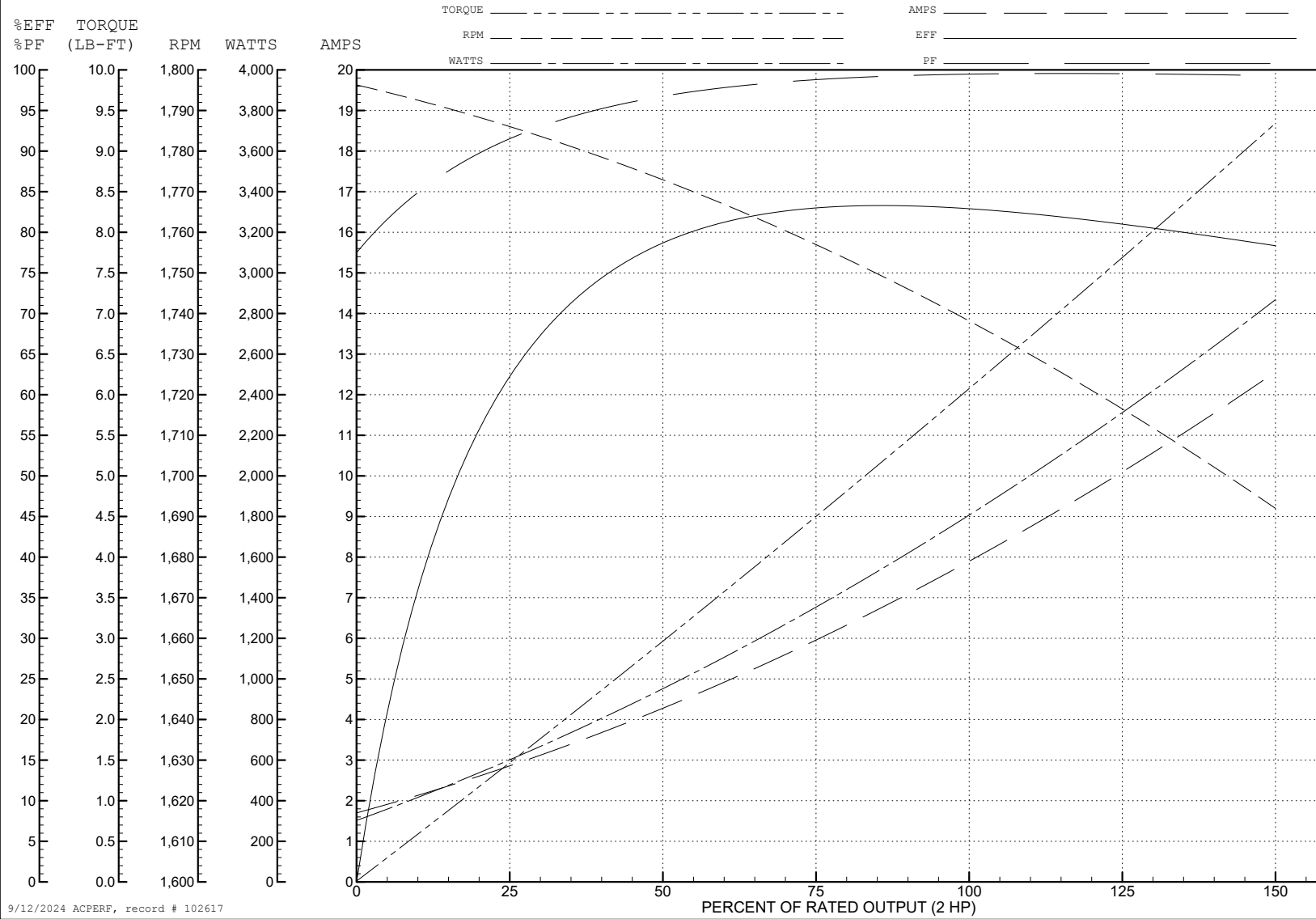
ABB Motors and Mechanical Inc.

WINDING # 35WGG243

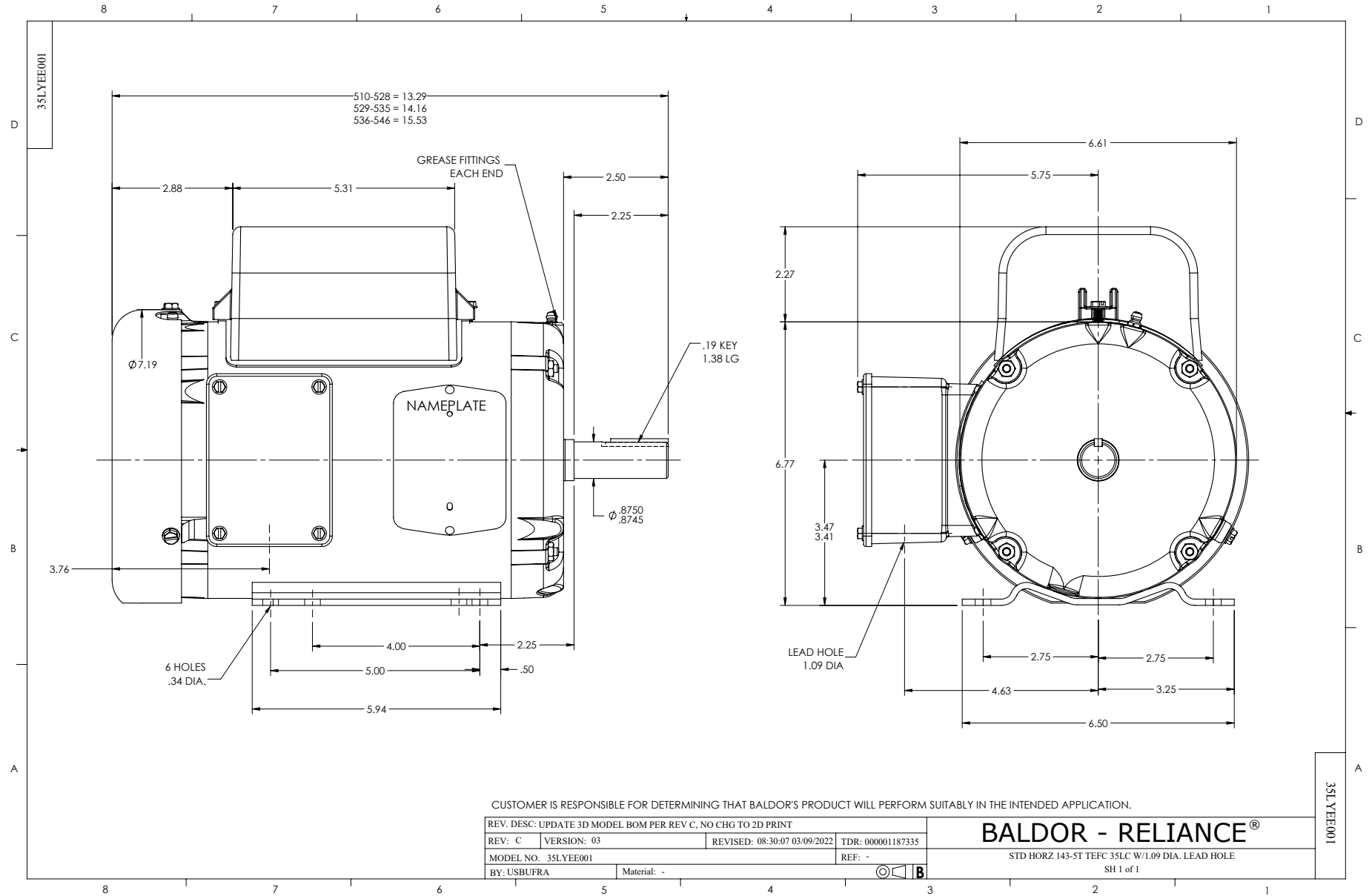
Typical performance - not guaranteed values.

2 HP 1 PH 60 HZ 1740 RPM 230 V 3546LC

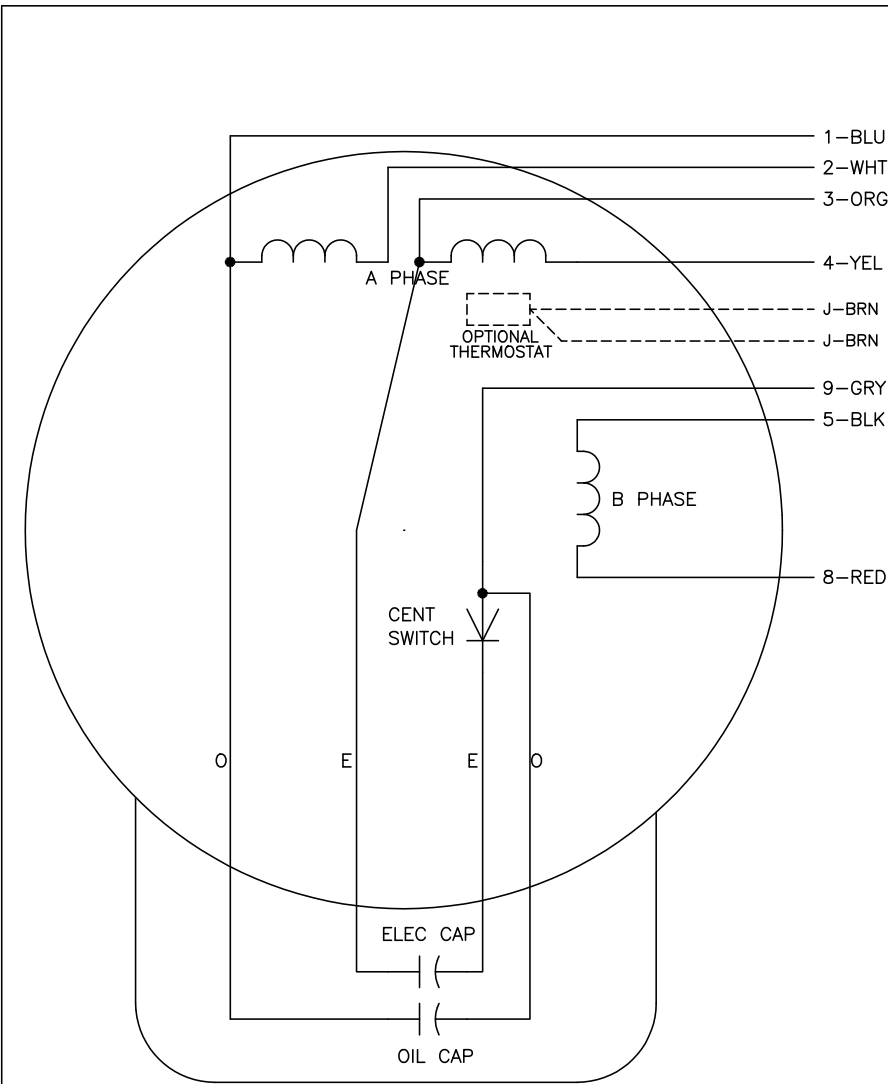
TORQUES (LB-FT): PO=15.9 PU=8.59 LR=14.2 LRA=66.3



9/12/2024 ACPERF, record # 102617



CD0016A01



	LINE A	LINE B	JOIN	JOIN
HIGH STD	1	4,5	2,3	8,9
HIGH OPP	1	4,8	2,3	5,9
LOW STD	1,3	2,4,5	8,9	-
LOW OPP	1,3	2,4,8	5,9	-

NOTES:

1. STANDARD ROTATION IS CCW FACING END OPPOSITE SHAFT EXTENSION.
2. OPTIONAL THERMOSTAT IS PROVIDED WHEN SPECIFIED.
3. MULTIPLE CAPACITORS ARE CONNECTED IN PARALLEL UNLESS OTHERWISE SPECIFIED.
4. LEAD COLORS ARE OPTIONAL. LEADS MUST ALWAYS BE NUMBERED AS SHOWN.

REV. DESC: REVISE TO SHOW OPTIONAL COLORS			
REV. LTR: E	BY: JLP	REVISED: 04/09/99 1:19	TDR: 0178636
10A91000		FILE: AAA00007410	MDL: -
		MTL: -	

BALDOR ELECTRIC Co.

TYPE LC, DV, REV, OIL CAP ACR. LINE, 7 LEADS

CD0016A01