

ABB BALDOR RELIANCE III

Customer information packet

L3514-50

1.5/1.1KWHP, 1460RPM, 1PH, 50HZ, 56, 3546LC, T

Class - None

Division - Not Applicable

Specifications

Enclosure	TEFC
Frame	56
Frame Material	Steel
Frequency	50.00 Hz
Haz Area Class and Group	None
Haz Area Division	Not Applicable
Motor Letter Type	Cap Start, Cap Run
Output @ Frequency	1.500 HP @ 50 HZ
Phase	1
Synchronous Speed @ Frequency	1500 RPM @ 50 HZ
Voltage @ Frequency	220.0 V @ 50 HZ 110.0 V @ 50 HZ
Agency Approvals	CE CURUS UKCA WEEE C UR US
Ambient Temperature	40 °C
Auxiliary Box	NO AUXILLARY BOX
Auxiliary Box Lead Termination	None
Base Indicator	Rigid
Bearing Grease Type	Polyrex EM (-20F +300F)
Blower	None
Current @ Voltage	15.400 A @ 110.0 V 7.700 A @ 220.0 V
Design Code	L
Drip Cover	No Drip Cover
Duty Rating	CONT
Efficiency @ 100% Load	81.4 %
Electrically Isolated Bearing	Not Electrically Isolated
Feedback Device	NO FEEDBACK
Front Shaft Indicator	None

Part Detail

Revision	-
Type	AC
Mech. spec.	35E008
Base	
Status	PRD/A
Elec. spec.	35WGF522
Layout	35LYE008
Eff. date	04-20-2026
CD Diagram	CD0055
Poles	04
Leads	6#18
Proprietary	False
Created date	04-20-2026

Heater Indicator	No Heater
High Voltage Full Load Amps	7.7 a
Insulation Class	F
Inverter Code	Not Inverter
KVA Code	K
Lifting Lugs	No Lifting Lugs
Locked Bearing Indicator	No Locked Bearing
Motor Finish	CLEAR COAT
Motor Lead Quantity/Wire Size	6 @ 18 AWG
Motor Lead Termination	Flying Leads
Motor Standards	NEMA
Motor Type	3546LC
Mounting Arrangement	F1
Number of Poles	4
Overall Length	15.48 IN
Power Factor	79
Product Family	General Purpose
Pulley End Bearing Type	Ball
Pulley Face Code	Standard
Pulley Shaft Indicator	Standard
Rodent Screen	None
RoHS Status	ROHS COMPLIANT
Service Factor	1.15
Shaft Diameter	0.625 IN
Shaft Ground Indicator	No Shaft Grounding
Shaft Rotation	Reversible
Shaft Slinger Indicator	No Slinger
Speed	1460 rpm
Speed Code	Single Speed
Starting Method	Direct on line
Thermal Device - Bearing	None
Thermal Device - Winding	None
Vibration Sensor Indicator	No Vibration Sensor
Winding Thermal 1	None

Winding Thermal 2

None

Nameplate

NP1372L										
CAT.NO.	L3514-50									
SPEC.	35E008F522									
HP	1.5/1.1KW									
VOLTS	110/220									
AMP	15.4/7.7									
R.P.M. (1/MIN)	1460									
FRAME	56	HZ	50	PH	1					
SER.F.	1.15	CODE	K	DES	L	CL	F			
NEMA-NOM-EFF	81.4	PF	79							
RATING	40C AMB-S1 CONT									
CC	IP44 IC411 27KG									
DE	6205	ODE	6203							
ENCL	TEFC	SN								
	IE2 80.6(75%) 75.6(50%)									

Accessories

Part number	Description	Multiplier
35-8762	C FACE KIT	A8
35EP1506A01SP	D-FLANGE KIT	A8

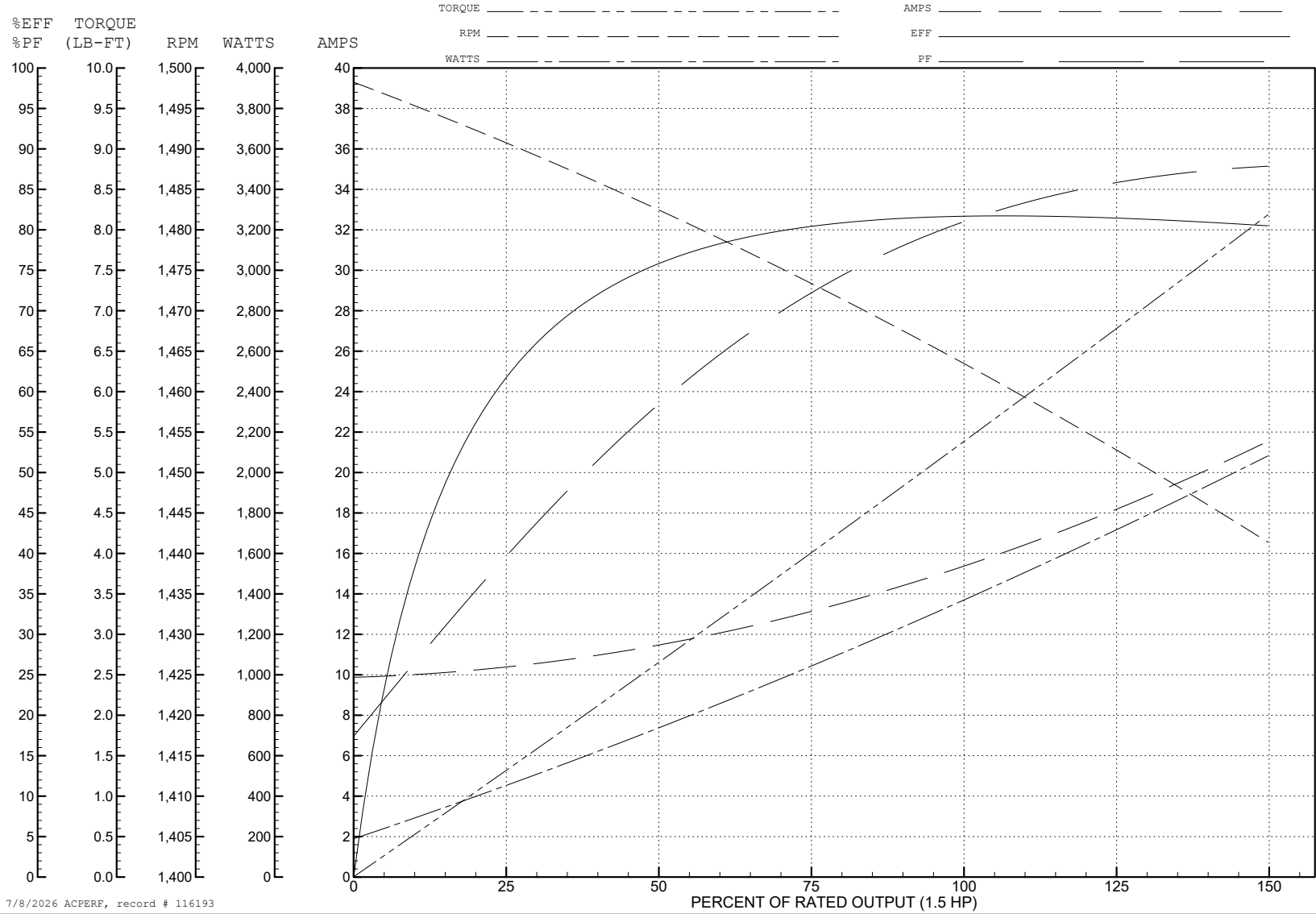
ABB Motors and Mechanical Inc.

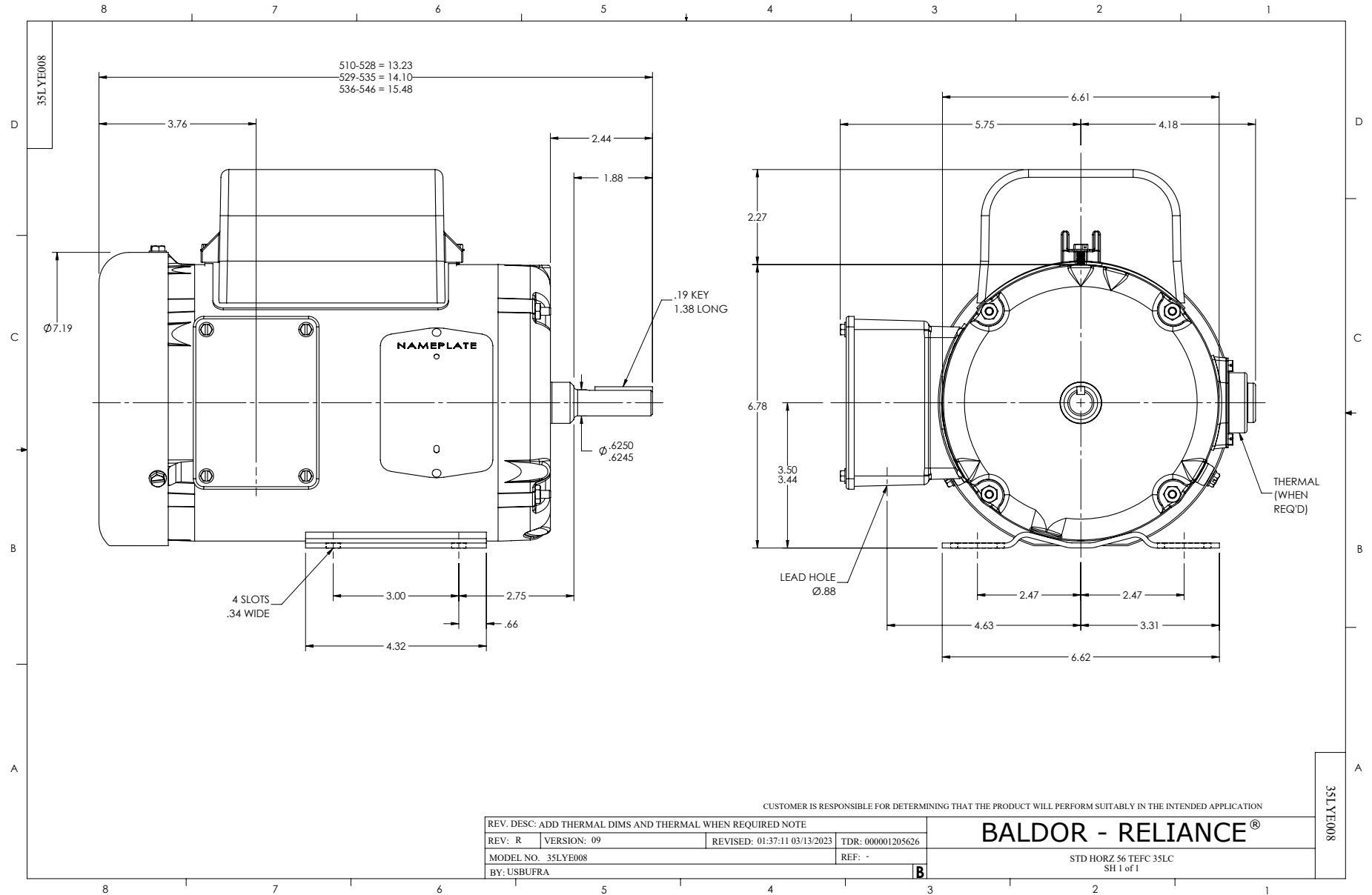
WINDING # 35WGF522

Typical performance - not guaranteed values.

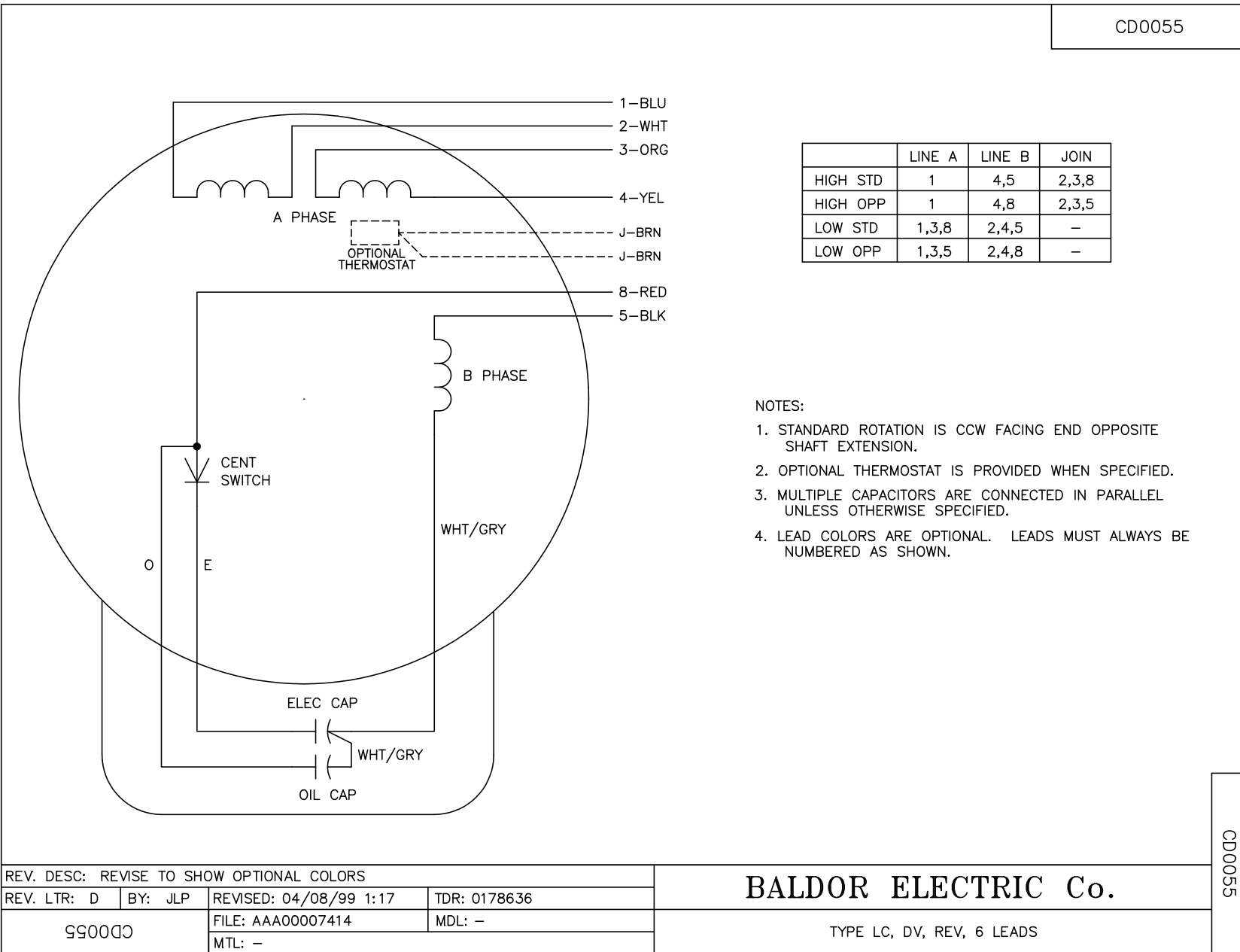
1.5 HP 1 PH 50 HZ 1460 RPM 110 V 3546LC

TORQUES (LB-FT): PO=17.6 PU=10.5 LR=13.2 LRA=117





CD0055



	LINE A	LINE B	JOIN
HIGH STD	1	4,5	2,3,8
HIGH OPP	1	4,8	2,3,5
LOW STD	1,3,8	2,4,5	-
LOW OPP	1,3,5	2,4,8	-

- NOTES:
1. STANDARD ROTATION IS CCW FACING END OPPOSITE SHAFT EXTENSION.
 2. OPTIONAL THERMOSTAT IS PROVIDED WHEN SPECIFIED.
 3. MULTIPLE CAPACITORS ARE CONNECTED IN PARALLEL UNLESS OTHERWISE SPECIFIED.
 4. LEAD COLORS ARE OPTIONAL. LEADS MUST ALWAYS BE NUMBERED AS SHOWN.

CD0055

REV. DESC: REVISE TO SHOW OPTIONAL COLORS			
REV. LTR: D	BY: JLP	REVISED: 04/08/99 1:17	TDR: 0178636
50000		FILE: AAA00007414	MDL: -
		MTL: -	

BALDOR ELECTRIC Co.

TYPE LC, DV, REV, 6 LEADS