



Customer information packet

L3510A

1HP, 1725RPM, 1PH, 60HZ, 56/56H, 3524L, TEFC, F

Class - None

Division - Not Applicable

Specifications

Enclosure	TEFC
Frame	56H
Frame Material	Steel
Frequency	60.00 Hz
Haz Area Class and Group	None
Haz Area Division	Not Applicable
Motor Letter Type	Cap Start, Induction Run
Output @ Frequency	1.000 HP @ 60 HZ
Phase	1
Synchronous Speed @ Frequency	1800 RPM @ 60 HZ
Voltage @ Frequency	115.0 V @ 60 HZ 230.0 V @ 60 HZ
Agency Approvals	UR CSA
Ambient Temperature	40 °C
Auxillary Box	No Auxillary Box
Auxillary Box Lead Termination	None
Base Indicator	Rigid
Bearing Grease Type	Polyrex EM (-20F +300F)
Blower	None
Current @ Voltage	13.000 A @ 115.0 V 6.500 A @ 230.0 V 6.800 A @ 208.0 V
Design Code	L
Drip Cover	No Drip Cover
Duty Rating	CONT
Efficiency @ 100% Load	67.0 %
Electrically Isolated Bearing	Not Electrically Isolated
Feedback Device	NO FEEDBACK
Front Face Code	Standard
Front Shaft Indicator	None
Heater Indicator	No Heater

Part detail

Revision	AR
Type	AC
Mech. spec.	35J383
Base	
Status	PRD/A
Elec. spec.	35WGY190
Layout	35LYJ383
Eff. date	05-07-2024
CD Diagram	CD0008
Poles	04
Leads	3#16 A PH,3#18 B&J,1#14 #4TH
Proprietary	False
Created date	01-01-0001

High Voltage Full Load Amps	6.5 a
Insulation Class	F
Inverter Code	Not Inverter
KVA Code	K
Lifting Lugs	No Lifting Lugs
Locked Bearing Indicator	No Locked Bearing
Motor Lead Exit	Ko Box
Motor Lead Quantity/Wire Size	3 @ 16 AWG, A PH
Motor Lead Termination	Flying Leads
Motor Standards	NEMA
Motor Type	3524L
Mounting Arrangement	F1
Number of Poles	4
Overall Length	12.91 IN
Power Factor	73
Product Family	General Purpose
Pulley End Bearing Type	Ball
Pulley Face Code	Standard
Pulley Shaft Indicator	Standard
Rodent Screen	None
RoHS Status	ROHS COMPLIANT
Service Factor	1.15
Shaft Diameter	0.625 IN
Shaft Extension Location	Pulley End
Shaft Ground Indicator	No Shaft Grounding
Shaft Rotation	Reversible
Shaft Slinger Indicator	No Slinger
Speed	1725 rpm
Speed Code	Single Speed
Starting Method	Direct on line
Thermal Device - Bearing	None
Thermal Device - Winding	Do Not Use Eve-Not Valid
Vibration Sensor Indicator	No Vibration Sensor
Winding Thermal 1	Automatic Thermal Overload

Winding Thermal 1 Location

SB

Winding Thermal 2

None

Nameplate

NP1257L									
CAT.NO.	L3510A								
SPEC.	35J383Y190								
HP	1								
VOLTS	115/230								
AMP	13/6.5								
RPM	1725								
FRAME	56H			HZ	60		PH	1	
SER.F.	1.15	CODE	K	DES	L	CL	F		
NEMA-NOM-EFF	67	PF	73						
RATING	40C AMB-CONT								
CC									
DE	6205	ODE	6203						
ENCL	TEFC	SN							

Accessories

Part number	Description	Multiplier
35-8762	C FACE KIT	A8
35EP1506A01SP	D-FLANGE KIT	A8

AC Induction Motor Performance Data

Record # 61223

Typical performance - not guaranteed values

Winding: 35WGY190-R011		Type: 3524L		Enclosure: TEFC	
Nameplate Data			115 V, 60 Hz: Low Voltage Connection		
Rated Output (HP)		1	Full Load Torque		3 LB-FT
Volts		115/230	Start Configuration		direct on line
Full Load Amps		13/6.5	Breakdown Torque		6.6 LB-FT
R.P.M.		1725	Pull-up Torque		5.3 LB-FT
Hz	60 Phase	1	Locked-rotor Torque		9.3 LB-FT
NEMA Design Code	L KVA Code	K	Starting Current		74 A
Service Factor (S.F.)		1.15	No-load Current		9.2 A
NEMA Nom. Eff.	67 Power Factor	73	Line-line Res. @ 25°C		0.693 Ω A Ph 1.77 Ω B Ph
Rating - Duty		40C AMB-CONT	Temp. Rise @ Rated Load		76°C
S.F. Amps			Temp. Rise @ S.F. Load		88°C
			Locked-rotor Power Factor		92.3
			Rotor inertia		0.142 LB-FT ²

Load Characteristics 115 V, 60 Hz, 1 HP

% of Rated Load	25	50	75	100	125	150	S.F.
Power Factor	34	51	64	72	77	81	75
Efficiency	51.1	63	66.8	66.6	63.9	58.9	65
Speed	1781	1766	1749	1725	1697	1658	1708
Line amperes	9.4	10.2	11.4	13.4	16	19.4	15

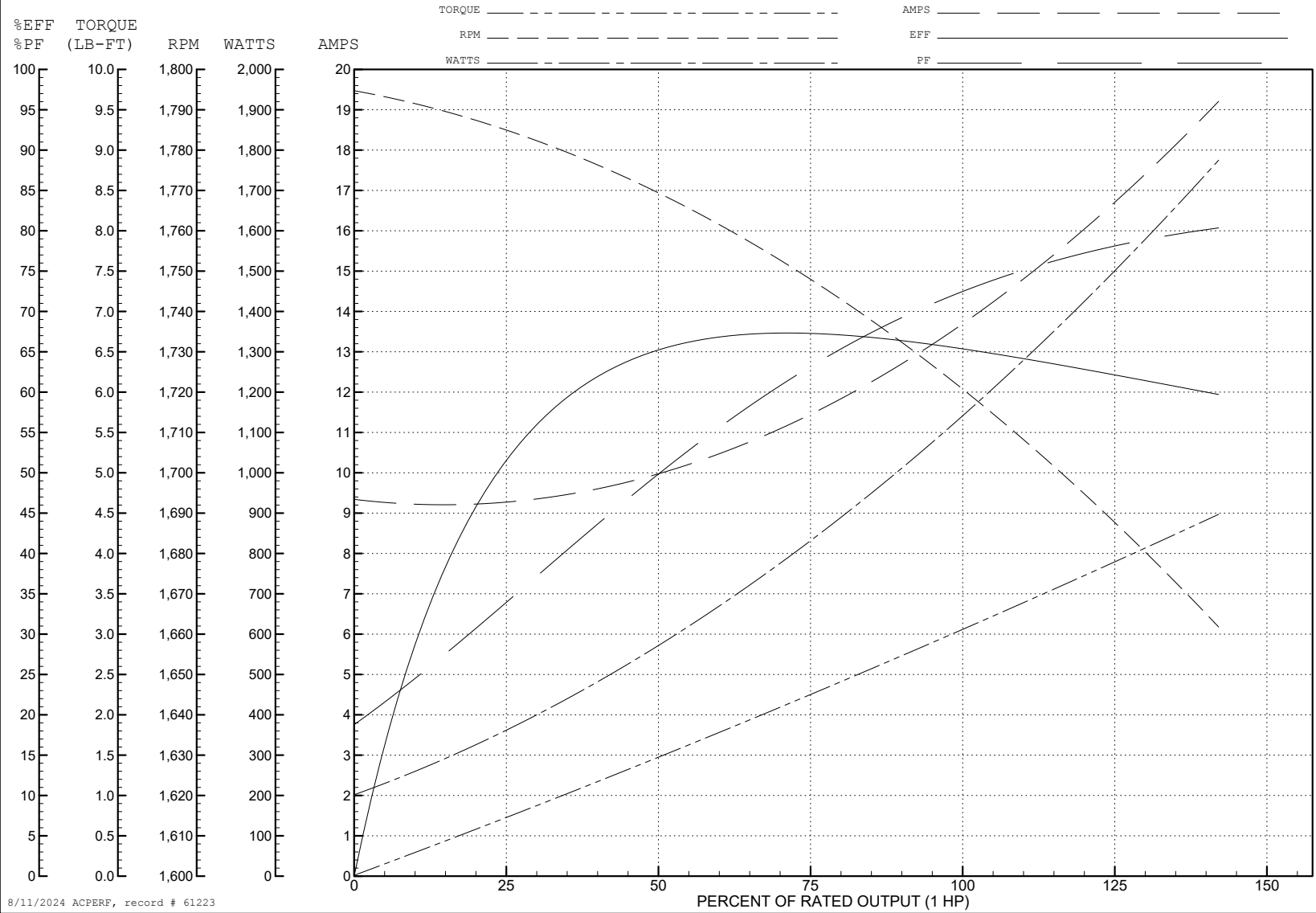
ABB Motors and Mechanical Inc.

WINDING # 35WGY190

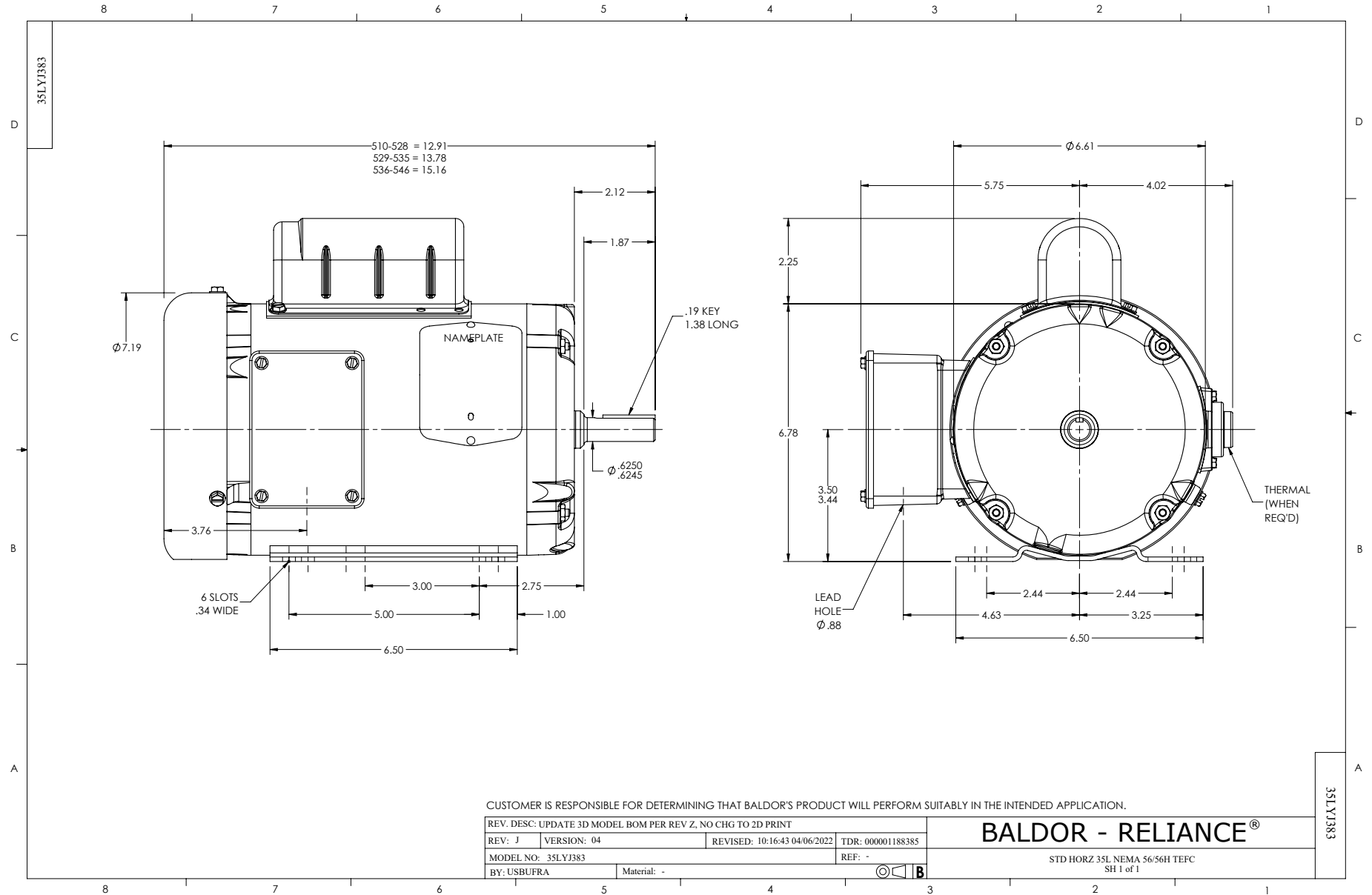
Typical performance - not guaranteed values.

1 HP 1 PH 60 HZ 1725 RPM 115 V 3524L

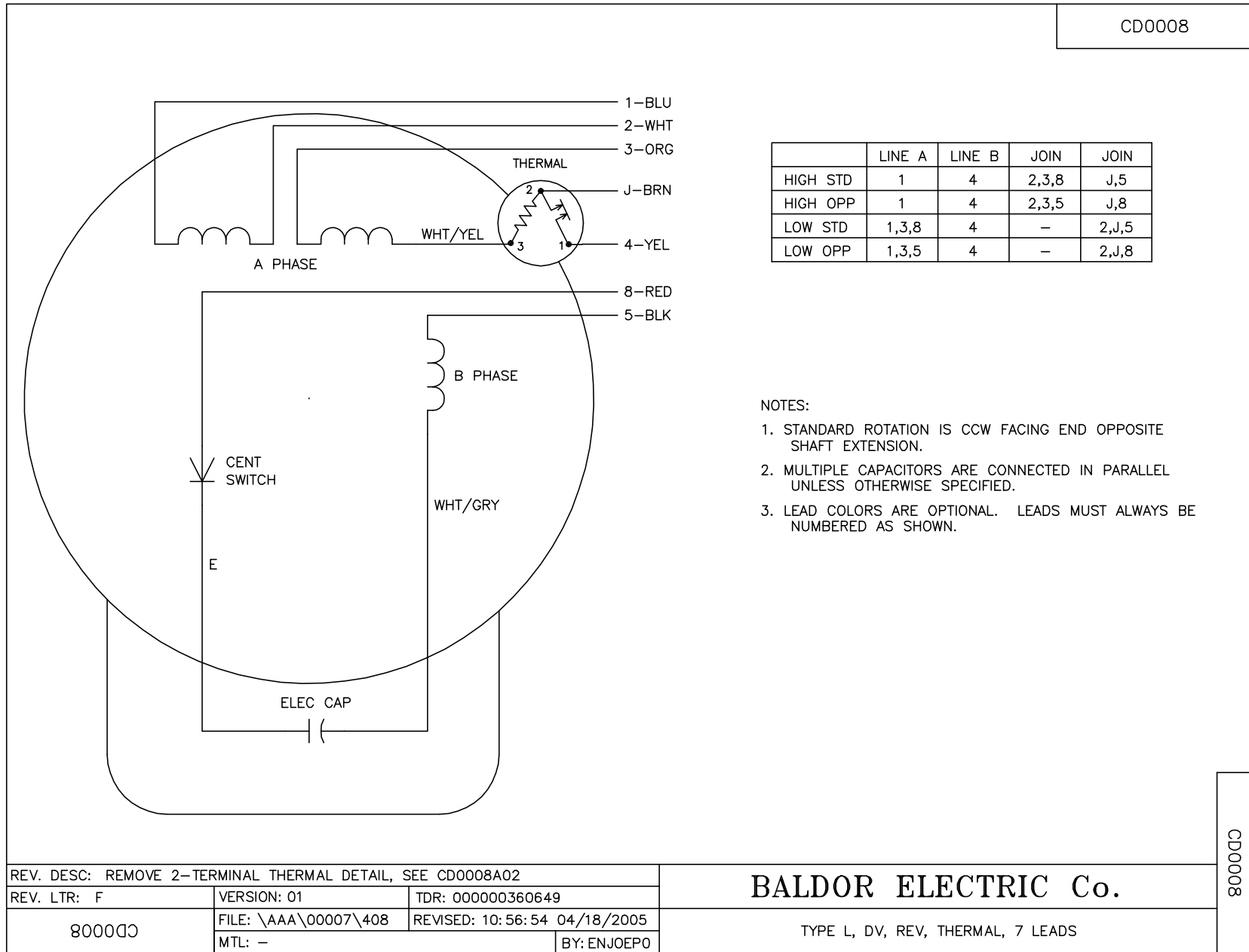
TORQUES (LB-FT): PO=6.6 PU=5.3 LR=9.3 LRA=74



8/11/2024 ACPERF, record # 61223



CD0008



	LINE A	LINE B	JOIN	JOIN
HIGH STD	1	4	2,3,8	J,5
HIGH OPP	1	4	2,3,5	J,8
LOW STD	1,3,8	4	-	2,J,5
LOW OPP	1,3,5	4	-	2,J,8

NOTES:

1. STANDARD ROTATION IS CCW FACING END OPPOSITE SHAFT EXTENSION.
2. MULTIPLE CAPACITORS ARE CONNECTED IN PARALLEL UNLESS OTHERWISE SPECIFIED.
3. LEAD COLORS ARE OPTIONAL. LEADS MUST ALWAYS BE NUMBERED AS SHOWN.

REV. DESC: REMOVE 2-TERMINAL THERMAL DETAIL, SEE CD0008A02		
REV. LTR: F	VERSION: 01	TDR: 000000360649
800000	FILE: \AAA\00007\408	REVISED: 10:56:54 04/18/2005
	MTL: -	BY: ENJOEPO

BALDOR ELECTRIC Co.

TYPE L, DV, REV, THERMAL, 7 LEADS

CD0008