



---

# Customer information packet

## L3509-50

1/.75KW, 2890RPM, 1PH, 50HZ, TEFC, 3524LC, 56

Class - None

Division - Not Applicable

## Specifications

Enclosure	56
Frame	TEFC
Frame Material	Steel
Frequency	50.00 Hz
Haz Area Class and Group	None
Haz Area Division	Not Applicable
Motor Letter Type	Cap Start, Cap Run
Output @ Frequency	.750 KW @ 50 HZ
Phase	1
Synchronous Speed @ Frequency	3000 RPM @ 50 HZ
Voltage @ Frequency	220.0 V @ 50 HZ 110.0 V @ 50 HZ
Agency Approvals	CE CURUS UKCA WEEE C UR US
Ambient Temperature	40 °C
Auxillary Box	No Auxillary Box
Auxillary Box Lead Termination	None
Base Indicator	Rigid
Bearing Grease Type	Polyrex EM (-20F +300F)
Blower	None
Current @ Voltage	4.700 A @ 220.0 V 9.400 A @ 110.0 V
Design Code	-
Drip Cover	No Drip Cover
Duty Rating	CONT
Efficiency @ 100% Load	77.4 %
Electrically Isolated Bearing	Not Electrically Isolated
Feedback Device	NO FEEDBACK
Frame Prefix	TEFC

## Part detail

Revision	F
Type	AC
Mech. spec.	35E008
Base	
Status	PRD/A
Elec. spec.	35WGG630
Layout	35LYE008
Eff. date	05-07-2024
CD Diagram	CD0055
Poles	02
Leads	4#16 A PH,2#18 B PH Y
Proprietary	False
Created date	02-27-2023

Front Shaft Indicator	None
Heater Indicator	No Heater
High Voltage Full Load Amps	4.7 a
Insulation Class	B
Inverter Code	Not Inverter
KVA Code	J
Lifting Lugs	No Lifting Lugs
Locked Bearing Indicator	No Locked Bearing
Motor Finish	CLEAR COAT
Motor Lead Quantity/Wire Size	4 @ 16 AWG, A PH
Motor Lead Termination	Flying Leads
Motor Standards	NEMA
Motor Type	3524LC
Mounting Arrangement	F1
Number of Poles	2
Overall Length	13.23 IN
Power Factor	95
Product Family	General Purpose
Pulley End Bearing Type	Ball
Pulley Face Code	Standard
Pulley Shaft Indicator	Standard
Rodent Screen	None
RoHS Status	ROHS NON-COMPLIANT
Service Factor	1.25
Shaft Diameter	0.625 IN
Shaft Ground Indicator	No Shaft Grounding
Shaft Rotation	Reversible
Shaft Slinger Indicator	No Slinger
Speed	2890 rpm
Speed Code	Single Speed
Starting Method	Direct on line
Thermal Device - Bearing	None
Thermal Device - Winding	None
Vibration Sensor Indicator	No Vibration Sensor

**Winding Thermal 1**

**None**

---

**Winding Thermal 2**

**None**

---

**Nameplate**

<b>NP1372L</b>									
<b>CAT.NO.</b>	L3509-50								
<b>SPEC.</b>	35E008G630								
<b>HP</b>	1/.75KW								
<b>VOLTS</b>	110/220								
<b>AMP</b>	9.4/4.7								
<b>R.P.M. (1/MIN)</b>	2890								
<b>FRAME</b>	56		<b>HZ</b>	50		<b>PH</b>	1		
<b>SER.F.</b>	1.25	<b>CODE</b>	J	<b>DES</b>	-	<b>CL</b>	B		
<b>NEMA-NOM-EFF</b>	77.4	<b>PF</b>	95						
<b>RATING</b>	40C AMB-S1 CONT								
<b>CC</b>		IP44 KG19 IC411							
<b>DE</b>	6205	<b>ODE</b>	6203						
<b>ENCL</b>	TEFC	<b>SN</b>							
	IE2-50HZ 76.7(75%),72.9(50%)								

**Accessories**

<b>Part number</b>	<b>Description</b>	<b>Multiplier</b>
35-8762	C FACE KIT	A8
35EP1506A01SP	D-FLANGE KIT	A8

**AC Induction Motor Performance Data**

Record # 101537

Typical performance - not guaranteed values

Winding: 35WGG630-R001		Type: 3524LC	Enclosure: TEFC	
<b>Nameplate Data</b>			<b>220 V, 50 Hz: High Voltage Connection</b>	
Rated Output (KW)	.75	Full Load Torque	1.851 LB-FT	
Volts	110/220	Start Configuration	direct on line	
Full Load Amps	9.4/4.7	Breakdown Torque	4.41 LB-FT	
R.P.M.	2890	Pull-up Torque	3.89 LB-FT	
Hz	50 Phase	Locked-rotor Torque	5.54 LB-FT	
NEMA Design Code	- KVA Code	Starting Current	34.1 A	
Service Factor (S.F.)	1.25	No-load Current	1.22 A	
NEMA Nom. Eff.	77.4 Power Factor	Line-line Res. @ 25°C	2.0032 Ω A Ph 1.7472 Ω B Ph	
Rating - Duty	40C AMB-CONT	Temp. Rise @ Rated Load	47°C	
S.F. Amps	11.6/5.8	Temp. Rise @ S.F. Load	63°C	

**Load Characteristics 220 V, 50 Hz, 0.75 KW**

% of Rated Load	25	50	75	100	125	150	S.F.
Power Factor	82	90	94	95	95	95	95
Efficiency	59.8	72.9	76.7	78	76.7	74.6	76.7
Speed	2969.7	2947.7	2923.2	2894.6	2863.5	2822.9	2864
Line amperes	1.85	2.68	3.61	4.68	5.85	7.19	5.85

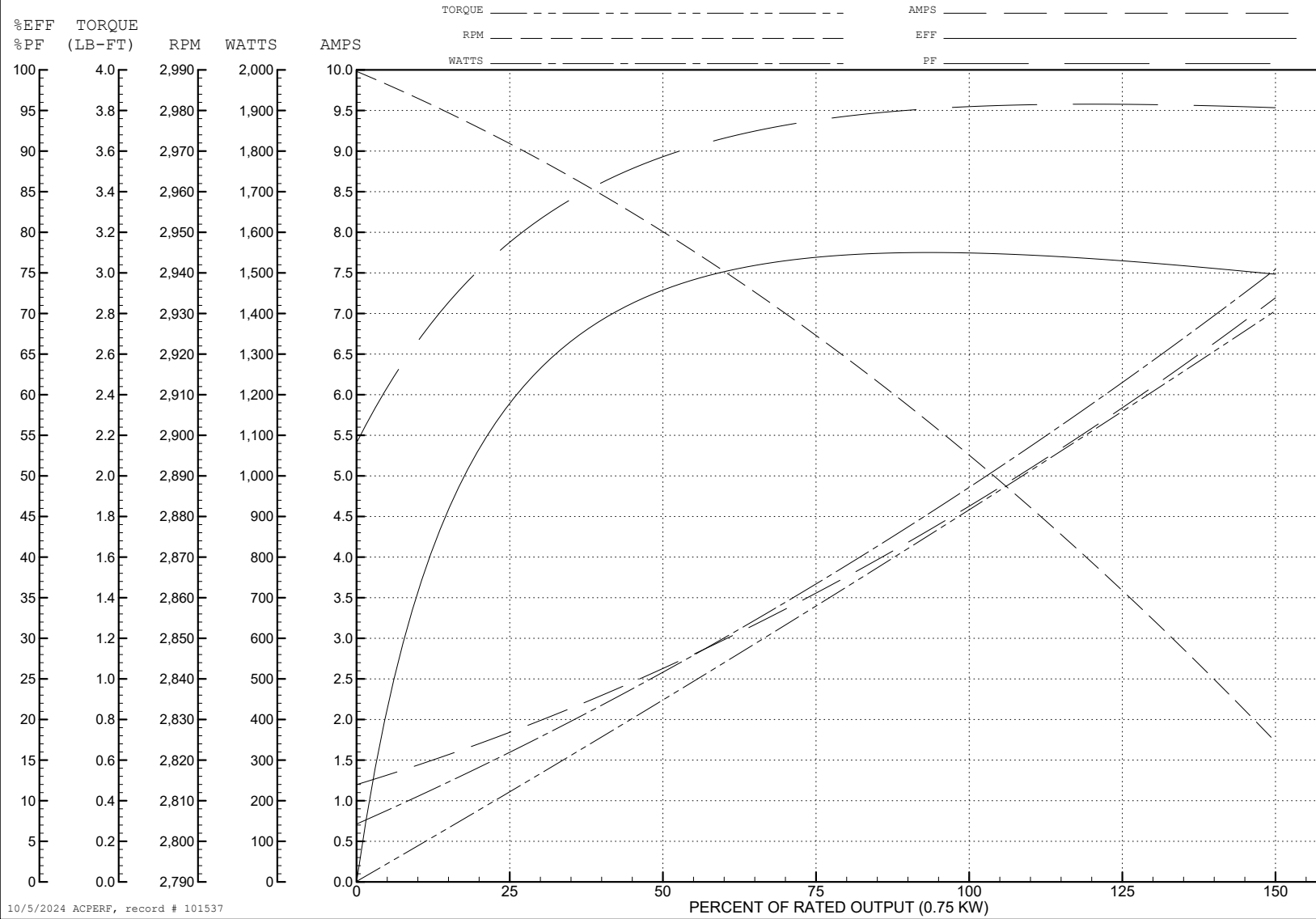
ABB Motors and Mechanical Inc.

WINDING # 35WGG630

Typical performance - not guaranteed values.

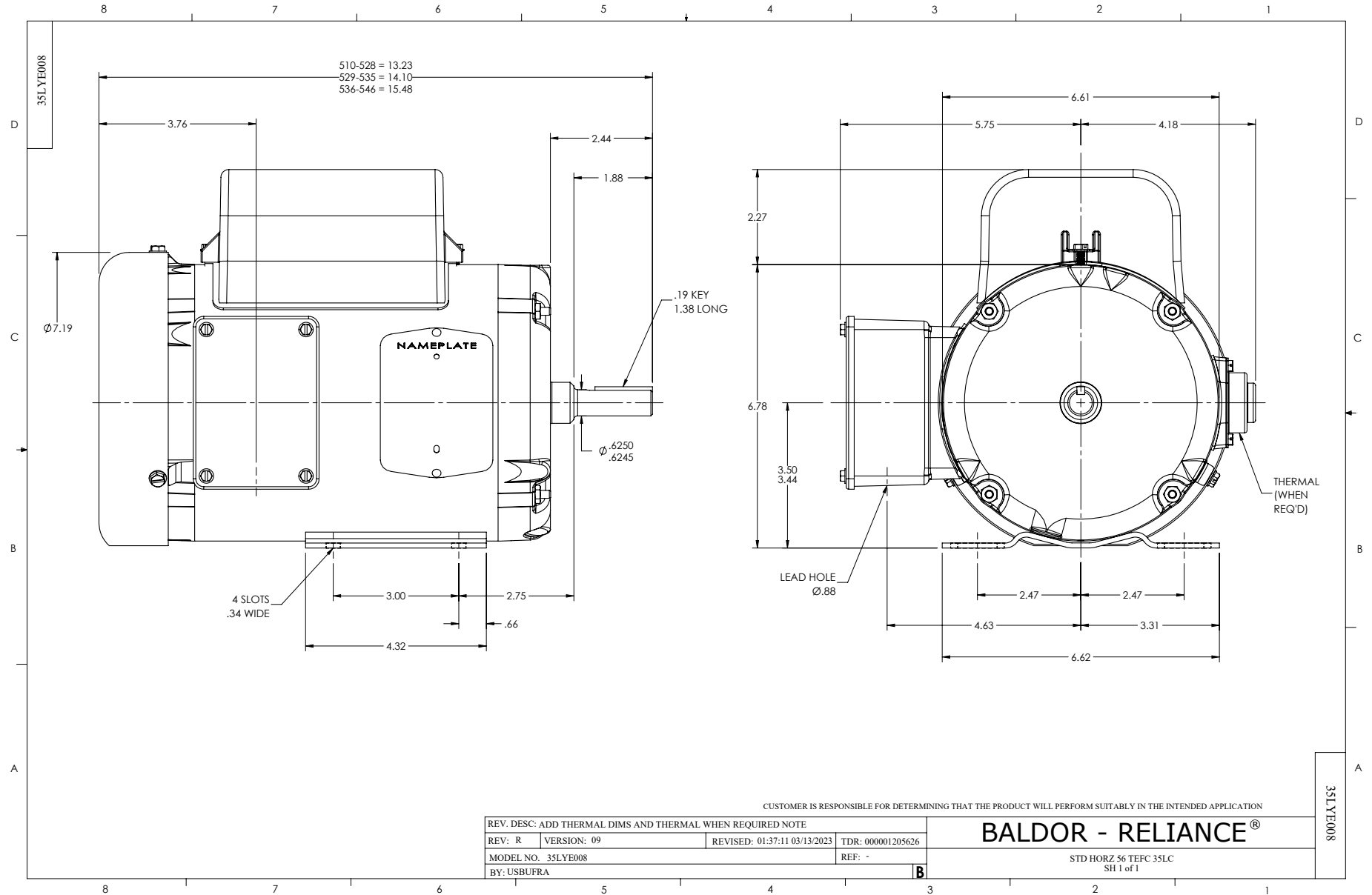
0.75 KW 1 PH 50 HZ 2890 RPM 220 V 3524LC

TORQUES (LB-FT): PO=4.41 PU=3.89 LR=5.54 LRA=34.1



10/5/2024 ACPERF, record # 101537





CUSTOMER IS RESPONSIBLE FOR DETERMINING THAT THE PRODUCT WILL PERFORM SUITABLY IN THE INTENDED APPLICATION

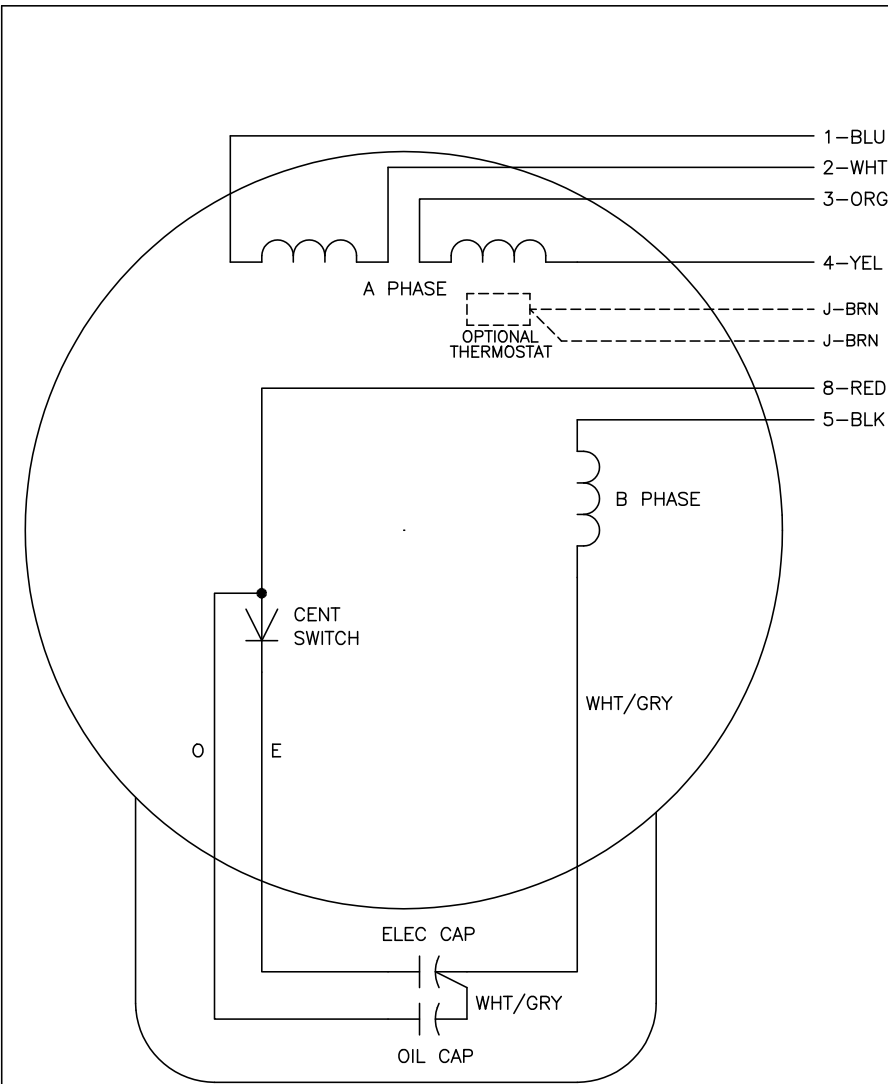
REV. DESC: ADD THERMAL DIMS AND THERMAL WHEN REQUIRED NOTE			
REV: R	VERSION: 09	REVISED: 01:37:11 03/13/2023	TDR: 000001205626
MODEL NO. 35LYE008		REF: -	
BY: USBUFRA			

**BALDOR - RELIANCE**®

STD HORZ 56 TEFC 35LC  
SH 1 of 1

35LYE008

CD0055



	LINE A	LINE B	JOIN
HIGH STD	1	4,5	2,3,8
HIGH OPP	1	4,8	2,3,5
LOW STD	1,3,8	2,4,5	-
LOW OPP	1,3,5	2,4,8	-

NOTES:

1. STANDARD ROTATION IS CCW FACING END OPPOSITE SHAFT EXTENSION.
2. OPTIONAL THERMOSTAT IS PROVIDED WHEN SPECIFIED.
3. MULTIPLE CAPACITORS ARE CONNECTED IN PARALLEL UNLESS OTHERWISE SPECIFIED.
4. LEAD COLORS ARE OPTIONAL. LEADS MUST ALWAYS BE NUMBERED AS SHOWN.

CD0055

REV. DESC: REVISE TO SHOW OPTIONAL COLORS			
REV. LTR: D	BY: JLP	REVISED: 04/08/99 1:17	TDR: 0178636
C00000		FILE: AAA00007414	MDL: -
		MTL: -	

BALDOR ELECTRIC Co.

TYPE LC, DV, REV, 6 LEADS