

# ABB BALDOR RELIANCE III

---

## Customer information packet

L3507-50

.75/.55KW, 1450RPM, 1PH, 50HZ, 56, 3524LC, TEF

Class - None

Division - Not Applicable

**Specifications**

<b>Enclosure</b>	TEFC
<b>Frame</b>	56
<b>Frame Material</b>	Steel
<b>Frequency</b>	50.00 Hz
<b>Haz Area Class and Group</b>	None
<b>Haz Area Division</b>	Not Applicable
<b>Motor Letter Type</b>	Cap Start, Cap Run
<b>Output @ Frequency</b>	.550 KW @ 50 HZ
<b>Phase</b>	1
<b>Synchronous Speed @ Frequency</b>	1500 RPM @ 50 HZ
<b>Voltage @ Frequency</b>	110.0 V @ 50 HZ 220.0 V @ 50 HZ
<b>Agency Approvals</b>	C UR US CE CURUS UKCA WEEE
<b>Ambient Temperature</b>	40 °C
<b>Auxiliary Box</b>	NO AUXILLARY BOX
<b>Auxiliary Box Lead Termination</b>	None
<b>Base Indicator</b>	Rigid
<b>Bearing Grease Type</b>	Polyrex EM (-20F +300F)
<b>Blower</b>	None
<b>Current @ Voltage</b>	7.000 A @ 110.0 V 3.500 A @ 220.0 V
<b>Design Code</b>	-
<b>Drip Cover</b>	No Drip Cover
<b>Duty Rating</b>	CONT
<b>Efficiency @ 100% Load</b>	77.1 %
<b>Electrically Isolated Bearing</b>	Not Electrically Isolated
<b>Feedback Device</b>	NO FEEDBACK
<b>Front Shaft Indicator</b>	None

**Part Detail**

<b>Revision</b>	E
<b>Type</b>	AC
<b>Mech. spec.</b>	35E008
<b>Base</b>	
<b>Status</b>	PRD/A
<b>Elec. spec.</b>	35WGG605
<b>Layout</b>	35LYE008
<b>Eff. date</b>	05-07-2024
<b>CD Diagram</b>	CD0055
<b>Poles</b>	04
<b>Leads</b>	6#18
<b>Proprietary</b>	False
<b>Created date</b>	02-20-2023

<b>Heater Indicator</b>	No Heater
<b>High Voltage Full Load Amps</b>	3.5 a
<b>Insulation Class</b>	F
<b>Inverter Code</b>	Not Inverter
<b>KVA Code</b>	K
<b>Lifting Lugs</b>	No Lifting Lugs
<b>Locked Bearing Indicator</b>	No Locked Bearing
<b>Motor Lead Quantity/Wire Size</b>	6 @ 18 AWG
<b>Motor Lead Termination</b>	Flying Leads
<b>Motor Standards</b>	NEMA
<b>Motor Type</b>	3524LC
<b>Mounting Arrangement</b>	F1
<b>Number of Poles</b>	4
<b>Overall Length</b>	13.23 IN
<b>Power Factor</b>	92
<b>Product Family</b>	General Purpose
<b>Pulley End Bearing Type</b>	Ball
<b>Pulley Face Code</b>	Standard
<b>Pulley Shaft Indicator</b>	Standard
<b>Rodent Screen</b>	None
<b>Service Factor</b>	1.25
<b>Shaft Diameter</b>	0.625 IN
<b>Shaft Ground Indicator</b>	No Shaft Grounding
<b>Shaft Rotation</b>	Reversible
<b>Shaft Slinger Indicator</b>	No Slinger
<b>Speed</b>	1450 rpm
<b>Speed Code</b>	Single Speed
<b>Starting Method</b>	Direct on line
<b>Thermal Device - Bearing</b>	None
<b>Thermal Device - Winding</b>	None
<b>Vibration Sensor Indicator</b>	No Vibration Sensor
<b>Winding Thermal 1</b>	None
<b>Winding Thermal 2</b>	None

**Nameplate**

<b>NP1372L</b>	
<b>CAT.NO.</b>	L3507-50
<b>SPEC.</b>	35E008G605G1
<b>HP</b>	.75/.55KW
<b>VOLTS</b>	110/220
<b>AMP</b>	7/3.5
<b>R.P.M. (1/MIN)</b>	1450
<b>FRAME</b>	56 <b>HZ</b> 50 <b>PH</b> 1
<b>SER.F.</b>	1.25 <b>CODE</b> K <b>DES</b> - <b>CL</b> F
<b>NEMA-NOM-EFF</b>	77.1 <b>PF</b> 92
<b>RATING</b>	40C AMB-S1 CONT
<b>CC</b>	IP44 KG18 IC411
<b>DE</b>	6205 <b>ODE</b> 6203
<b>ENCL</b>	TEFC <b>SN</b>
	SFA 8.4/4.2

**Accessories**

<b>Part number</b>	<b>Description</b>	<b>Multiplier</b>
35-8762	C FACE KIT	A8
35EP1506A01SP	D-FLANGE KIT	A8

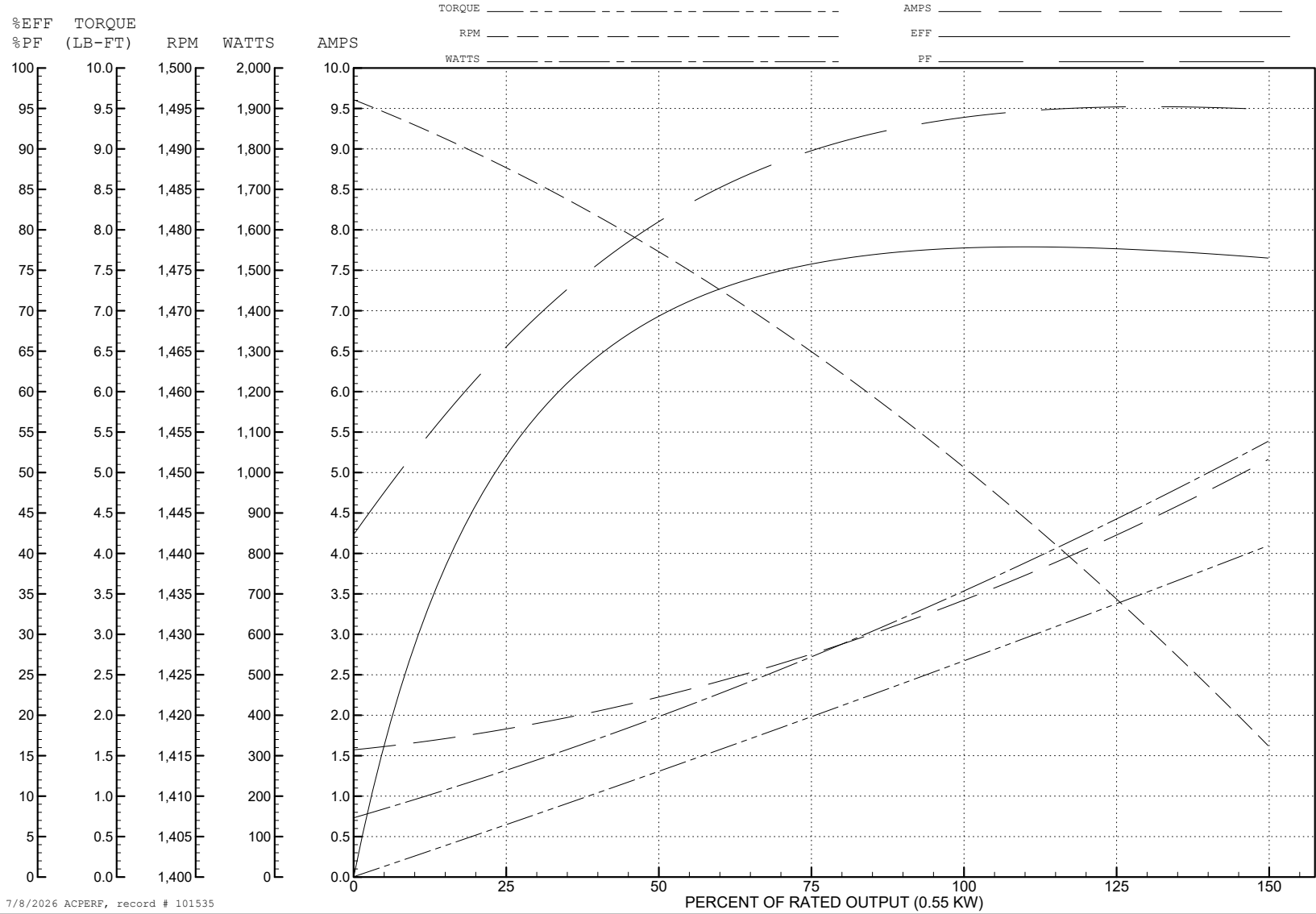
ABB Motors and Mechanical Inc.

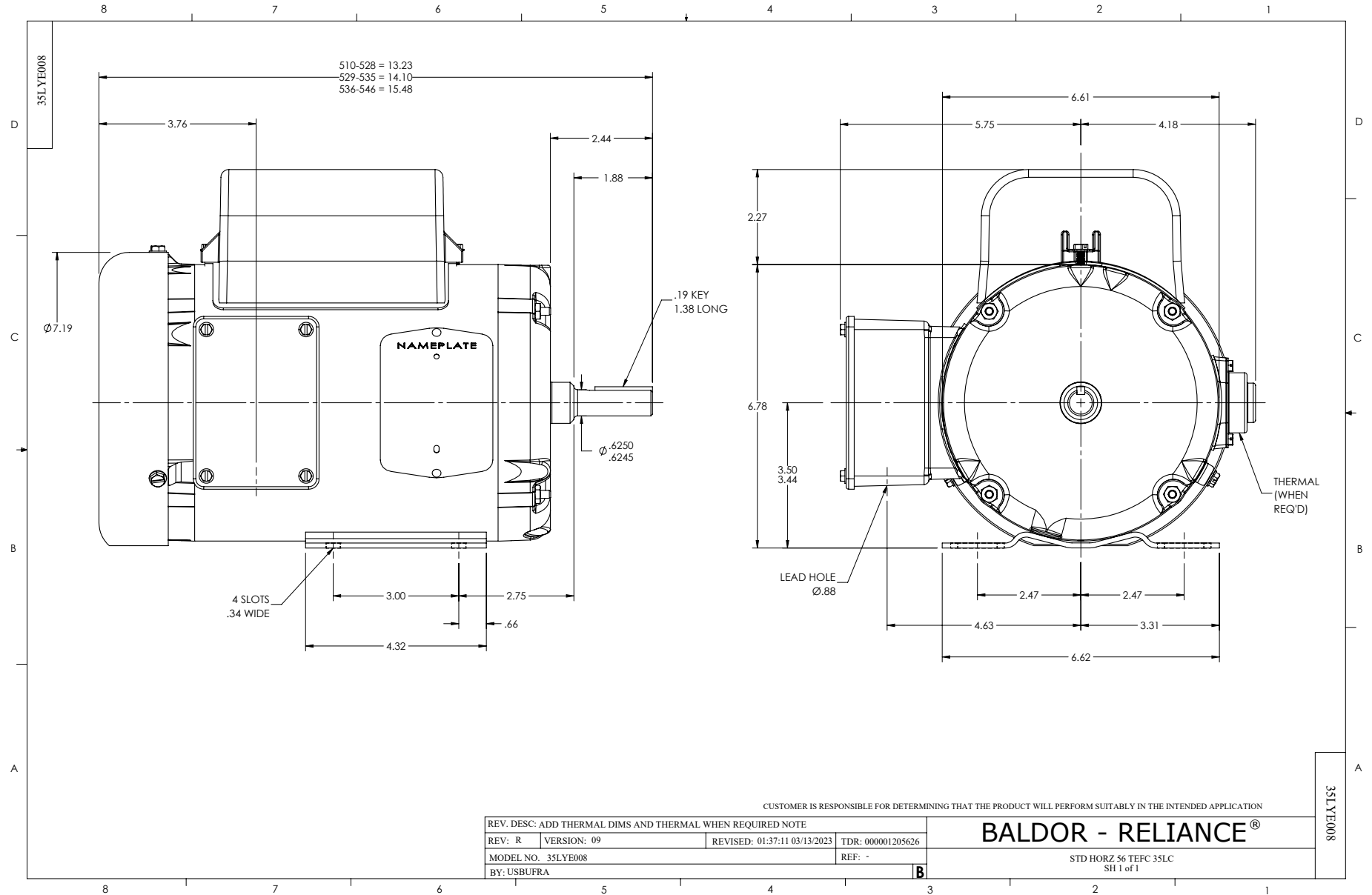
WINDING # 35WGG605

Typical performance - not guaranteed values.

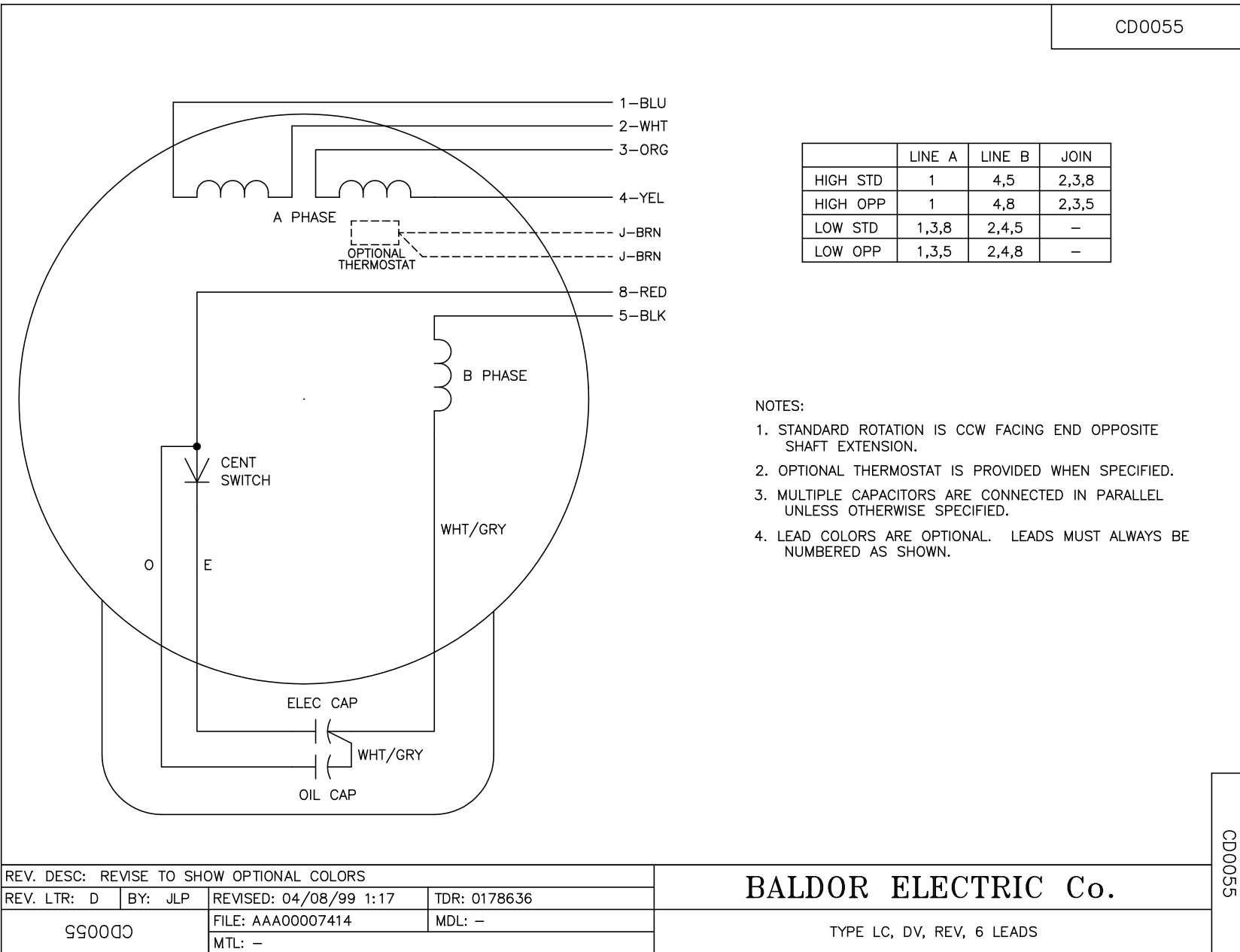
0.55 KW 1 PH 50 HZ 1450 RPM 220 V 3524LC

TORQUES (LB-FT): PO=6.94 PU=4.67 LR=6.05 LRA=27.1





CD0055



	LINE A	LINE B	JOIN
HIGH STD	1	4,5	2,3,8
HIGH OPP	1	4,8	2,3,5
LOW STD	1,3,8	2,4,5	-
LOW OPP	1,3,5	2,4,8	-

- NOTES:
1. STANDARD ROTATION IS CCW FACING END OPPOSITE SHAFT EXTENSION.
  2. OPTIONAL THERMOSTAT IS PROVIDED WHEN SPECIFIED.
  3. MULTIPLE CAPACITORS ARE CONNECTED IN PARALLEL UNLESS OTHERWISE SPECIFIED.
  4. LEAD COLORS ARE OPTIONAL. LEADS MUST ALWAYS BE NUMBERED AS SHOWN.

CD0055

REV. DESC: REVISE TO SHOW OPTIONAL COLORS			
REV. LTR: D	BY: JLP	REVISED: 04/08/99 1:17	TDR: 0178636
C00000		FILE: AAA00007414	MDL: -
		MTL: -	

**BALDOR ELECTRIC Co.**

TYPE LC, DV, REV, 6 LEADS