

ABB BALDOR RELIANCE III

Customer information packet

L3506-50

.75/.55KW, 2850RPM, 1PH, 50HZ, TEFC, 3520LC, 5

Class - None

Division - Not Applicable

Specifications

Enclosure	TEFC
Frame	56
Frame Material	Steel
Frequency	50.00 Hz
Haz Area Class and Group	None
Haz Area Division	Not Applicable
Motor Letter Type	Cap Start, Cap Run
Output @ Frequency	.550 KW @ 50 HZ
Phase	1
Synchronous Speed @ Frequency	3000 RPM @ 50 HZ
Voltage @ Frequency	220.0 V @ 50 HZ 110.0 V @ 50 HZ
Agency Approvals	CE CURUS UKCA WEEE C UR US
Ambient Temperature	40 °C
Auxiliary Box	NO AUXILLARY BOX
Auxiliary Box Lead Termination	None
Base Indicator	Rigid
Bearing Grease Type	Polyrex EM (-20F +300F)
Blower	None
Current @ Voltage	3.600 A @ 220.0 V 7.200 A @ 110.0 V
Design Code	-
Drip Cover	No Drip Cover
Duty Rating	CONT
Efficiency @ 100% Load	74.1 %
Electrically Isolated Bearing	Not Electrically Isolated
Feedback Device	NO FEEDBACK
Front Shaft Indicator	None

Part Detail

Revision	G
Type	AC
Mech. spec.	35E008
Base	
Status	PRD/A
Elec. spec.	35WGG629
Layout	35LYE008
Eff. date	11-21-2024
CD Diagram	CD0055
Poles	02
Leads	6#18
Proprietary	False
Created date	02-27-2023

Heater Indicator	No Heater
High Voltage Full Load Amps	3.6 a
Insulation Class	B
Inverter Code	Not Inverter
KVA Code	K
Lifting Lugs	No Lifting Lugs
Locked Bearing Indicator	No Locked Bearing
Motor Finish	CLEAR COAT
Motor Lead Quantity/Wire Size	6 @ 18 AWG
Motor Lead Termination	Flying Leads
Motor Standards	NEMA
Motor Type	3520LC
Mounting Arrangement	F1
Number of Poles	2
Overall Length	13.23 IN
Power Factor	95
Product Family	General Purpose
Pulley End Bearing Type	Ball
Pulley Face Code	Standard
Pulley Shaft Indicator	Standard
Rodent Screen	None
RoHS Status	ROHS NON-COMPLIANT
Service Factor	1.25
Shaft Diameter	0.625 IN
Shaft Ground Indicator	No Shaft Grounding
Shaft Rotation	Reversible
Shaft Slinger Indicator	No Slinger
Speed	2850 rpm
Speed Code	Single Speed
Starting Method	Direct on line
Thermal Device - Bearing	None
Thermal Device - Winding	None
Vibration Sensor Indicator	No Vibration Sensor
Winding Thermal 1	None

Winding Thermal 2

None

Nameplate

NP1372L	
CAT.NO.	L3506-50
SPEC.	35E008G629
HP	.75/.55KW
VOLTS	110/220
AMP	7.2/3.6
R.P.M. (1/MIN)	2850
FRAME	56 HZ 50 PH 1
SER.F.	1.25 CODE K DES - CL B
NEMA-NOM-EFF	74.1 PF 95
RATING	40C AMB-S1 CONT
CC	IP44 KG19 IC411
DE	6205 ODE 6203
ENCL	TEFC SN
	IE2-50HZ 71(75%),65(50%)

Accessories

Part number	Description	Multiplier
35-8762	C FACE KIT	A8
35EP1506A01SP	D-FLANGE KIT	A8

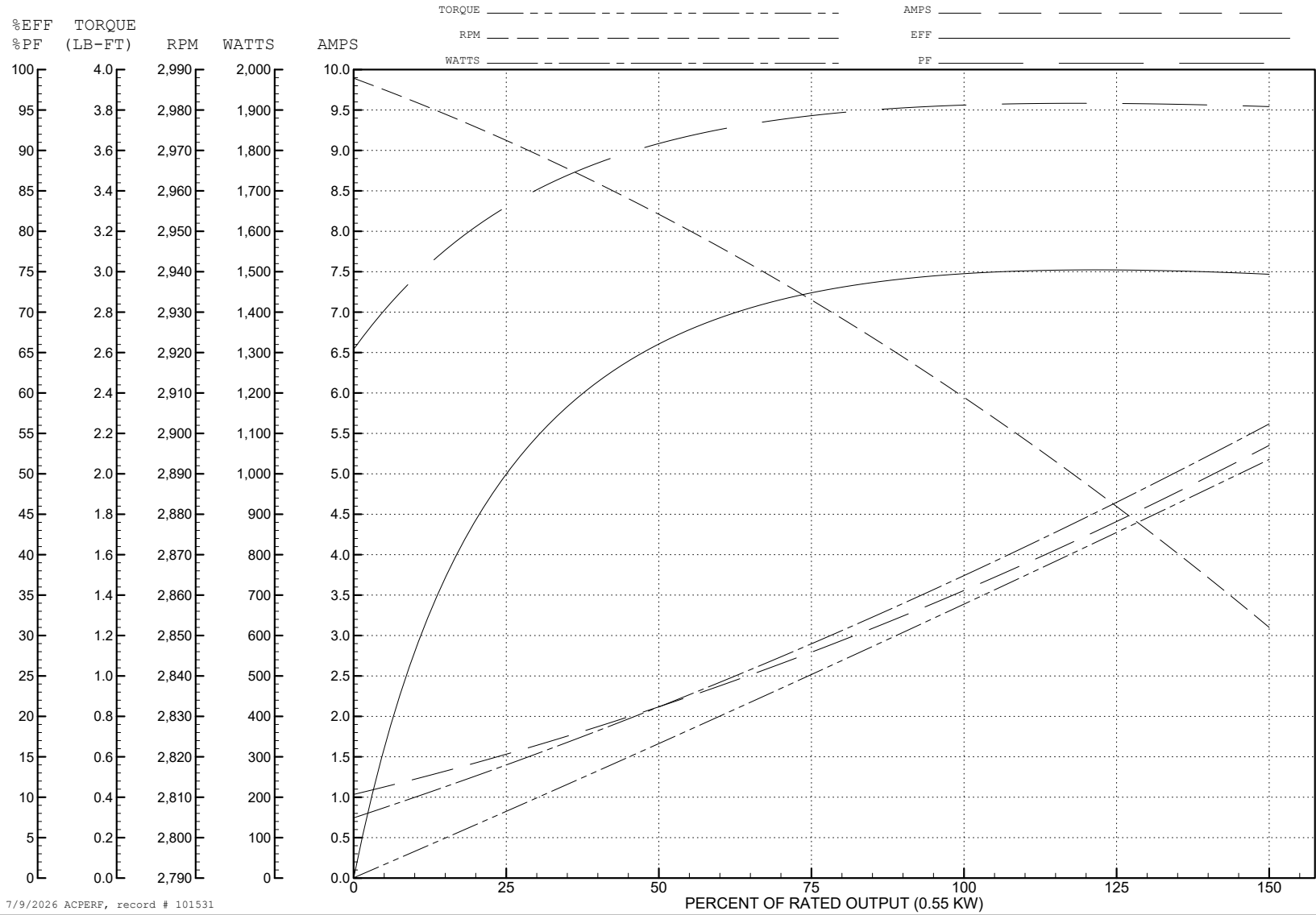
ABB Motors and Mechanical Inc.

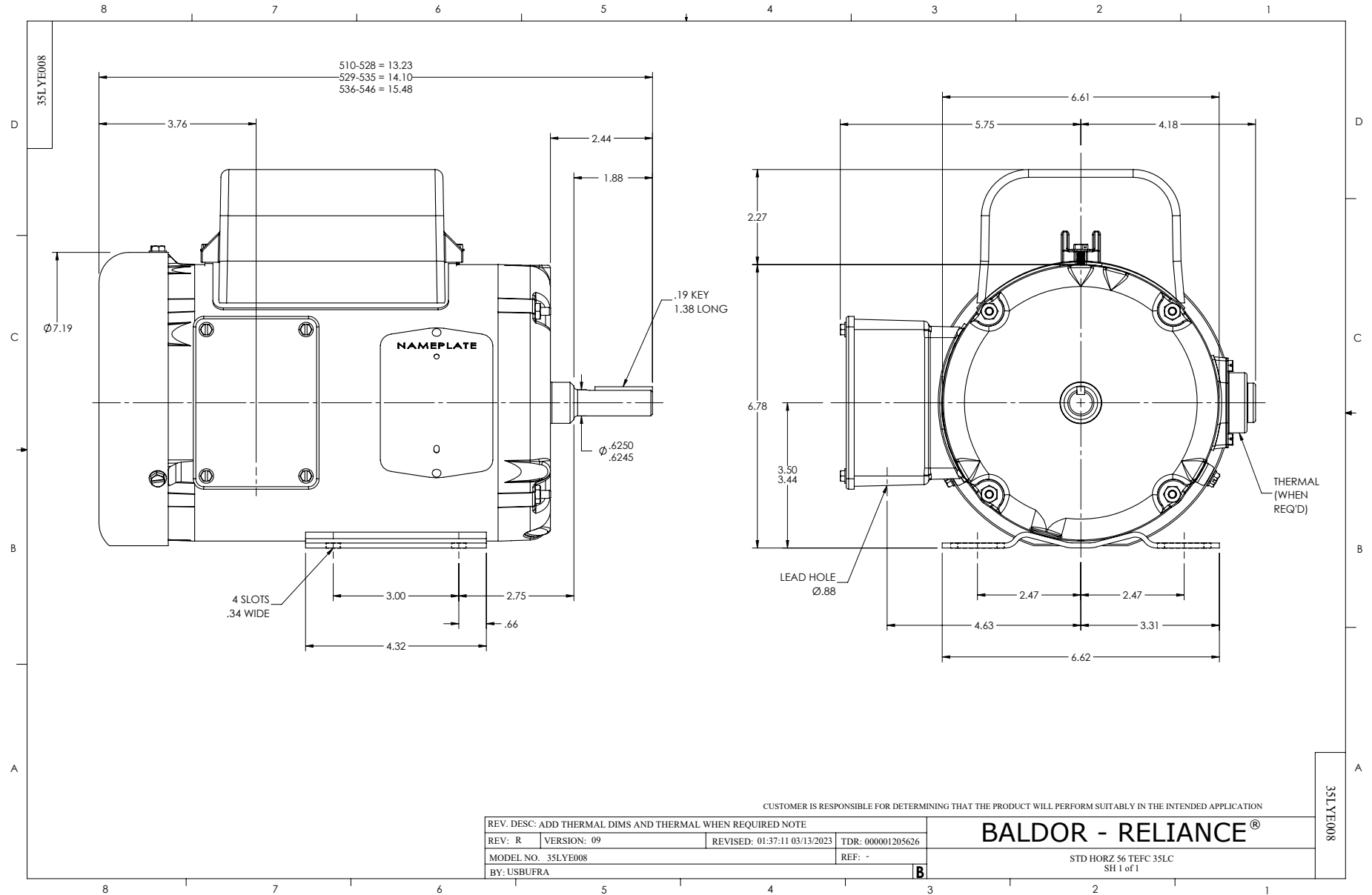
WINDING # 35WGG629

Typical performance - not guaranteed values.

0.55 KW 1 PH 50 HZ 2910 RPM 220 V 3520LC

TORQUES (LB-FT): PO=4.76 PU=3.04 LR=4.77 LRA=29.3





CD0055

