

ABB BALDOR RELIANCE III

Customer information packet

L3409-50

.5/.37KW, 1425RPM, 1PH, 50HZ, 48, 3424LC, TEFC

Class - None

Division - Not Applicable

Specifications

Enclosure	TEFC
Frame	48
Frame Material	Steel
Frequency	50.00 Hz
Haz Area Class and Group	None
Haz Area Division	Not Applicable
Motor Letter Type	Cap Start, Cap Run
Output @ Frequency	.370 KW @ 50 HZ
Phase	1
Synchronous Speed @ Frequency	1500 RPM @ 50 HZ
Voltage @ Frequency	110.0 V @ 50 HZ 220.0 V @ 50 HZ
Agency Approvals	C UR US CE CURUS UKCA WEEE
Ambient Temperature	40 °C
Auxiliary Box	NO AUXILLARY BOX
Auxiliary Box Lead Termination	None
Base Indicator	Rigid
Bearing Grease Type	Polyrex EM (-20F +300F)
Blower	None
Current @ Voltage	5.000 A @ 110.0 V 2.500 A @ 220.0 V
Design Code	-
Drip Cover	No Drip Cover
Duty Rating	CONT
Efficiency @ 100% Load	72.7 %
Electrically Isolated Bearing	Not Electrically Isolated
Feedback Device	NO FEEDBACK
Front Shaft Indicator	None

Part Detail

Revision	D
Type	AC
Mech. spec.	34G374
Base	
Status	PRD/A
Elec. spec.	34WGR778
Layout	34LYG374
Eff. date	10-25-2024
CD Diagram	CD0055
Poles	04
Leads	6#18
Proprietary	False
Created date	09-27-2023

Heater Indicator	No Heater
High Voltage Full Load Amps	2.5 a
Insulation Class	B
Inverter Code	Not Inverter
KVA Code	J
Lifting Lugs	No Lifting Lugs
Locked Bearing Indicator	No Locked Bearing
Motor Lead Quantity/Wire Size	6 @ 18 AWG
Motor Lead Termination	Flying Leads
Motor Standards	NEMA
Motor Type	3424LC
Mounting Arrangement	F1
Number of Poles	4
Overall Length	11.35 IN
Power Factor	93
Product Family	General Purpose
Pulley End Bearing Type	Ball
Pulley Face Code	Standard
Pulley Shaft Indicator	Standard
Rodent Screen	None
RoHS Status	ROHS COMPLIANT
Service Factor	1.25
Shaft Diameter	0.500 IN
Shaft Ground Indicator	No Shaft Grounding
Shaft Rotation	Reversible
Shaft Slinger Indicator	No Slinger
Speed	1425 rpm
Speed Code	Single Speed
Starting Method	Direct on line
Thermal Device - Bearing	None
Thermal Device - Winding	None
Vibration Sensor Indicator	No Vibration Sensor
Winding Thermal 1	None
Winding Thermal 2	None

Nameplate

NP1372L	
CAT.NO.	L3409-50
SPEC.	34G374R778
HP	.5/.37KW
VOLTS	110/220
AMP	5/2.5
R.P.M. (1/MIN)	1425
FRAME	48 HZ 50 PH 1
SER.F.	1.25 CODE J DES - CL B
NEMA-NOM-EFF	72.7 PF 93
RATING	40C AMB-S1 CONT
CC	IP44 KG15 IC411
DE	6203 ODE 6203
ENCL	TEFC SN
	IE2-50HZ 68(75%),60 (50%)

Accessories

Part number	Description	Multiplier
34-3900T	C-FACE KIT	A8

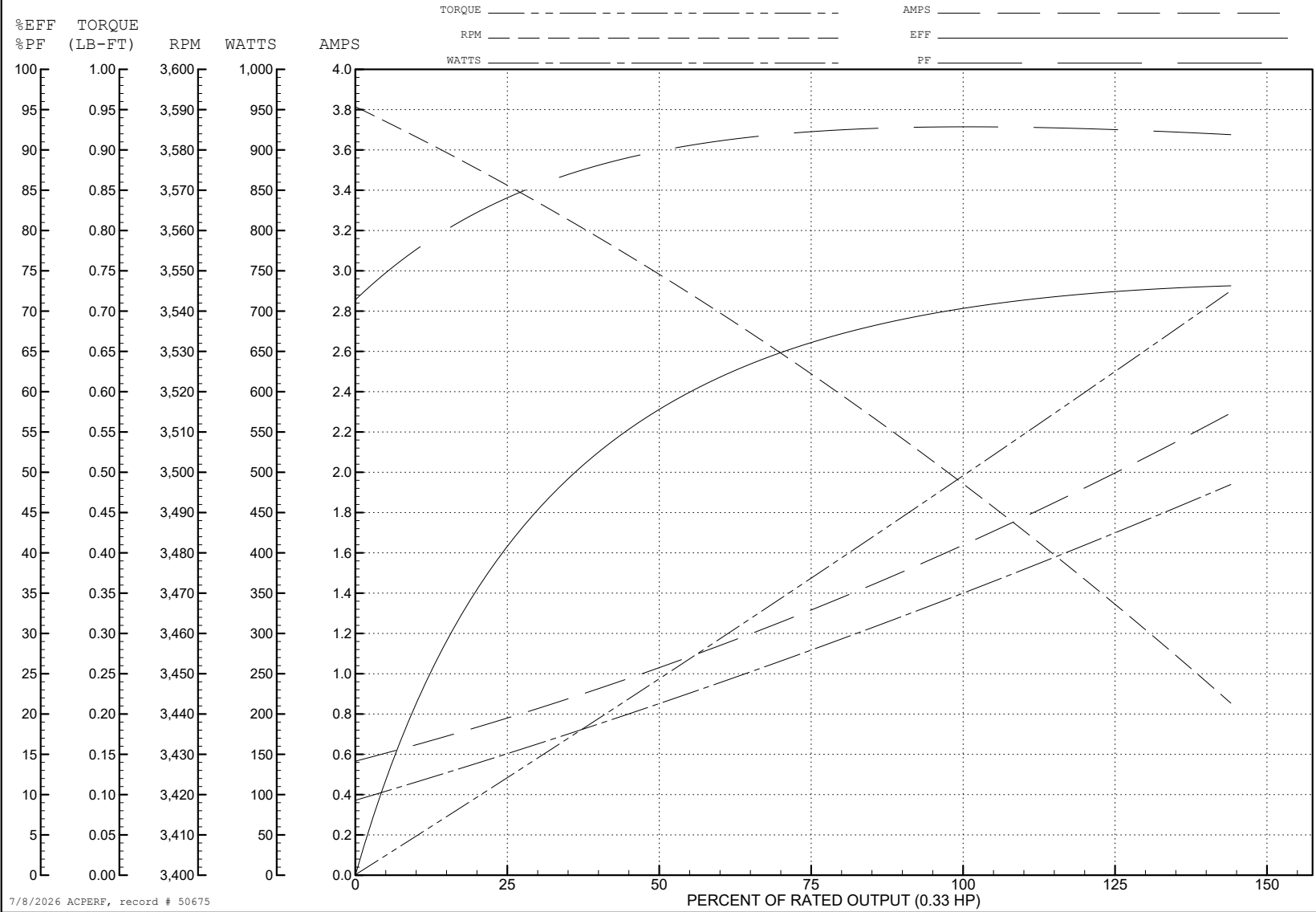
ABB Motors and Mechanical Inc.

WINDING # 34WGY788

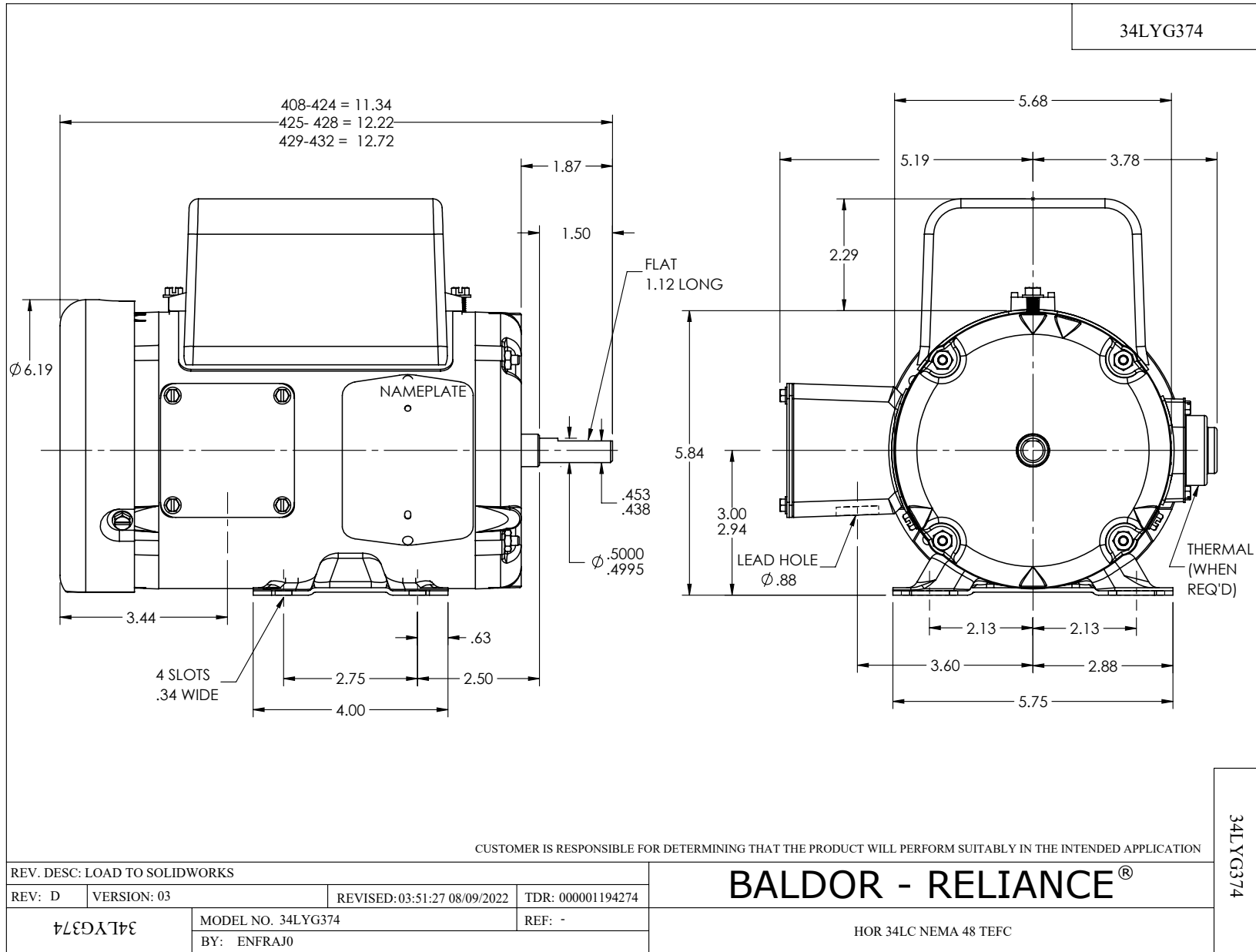
0.33 HP 1 PH 60 HZ 3450 RPM 230 V 3420LC

Typical performance - not guaranteed values.

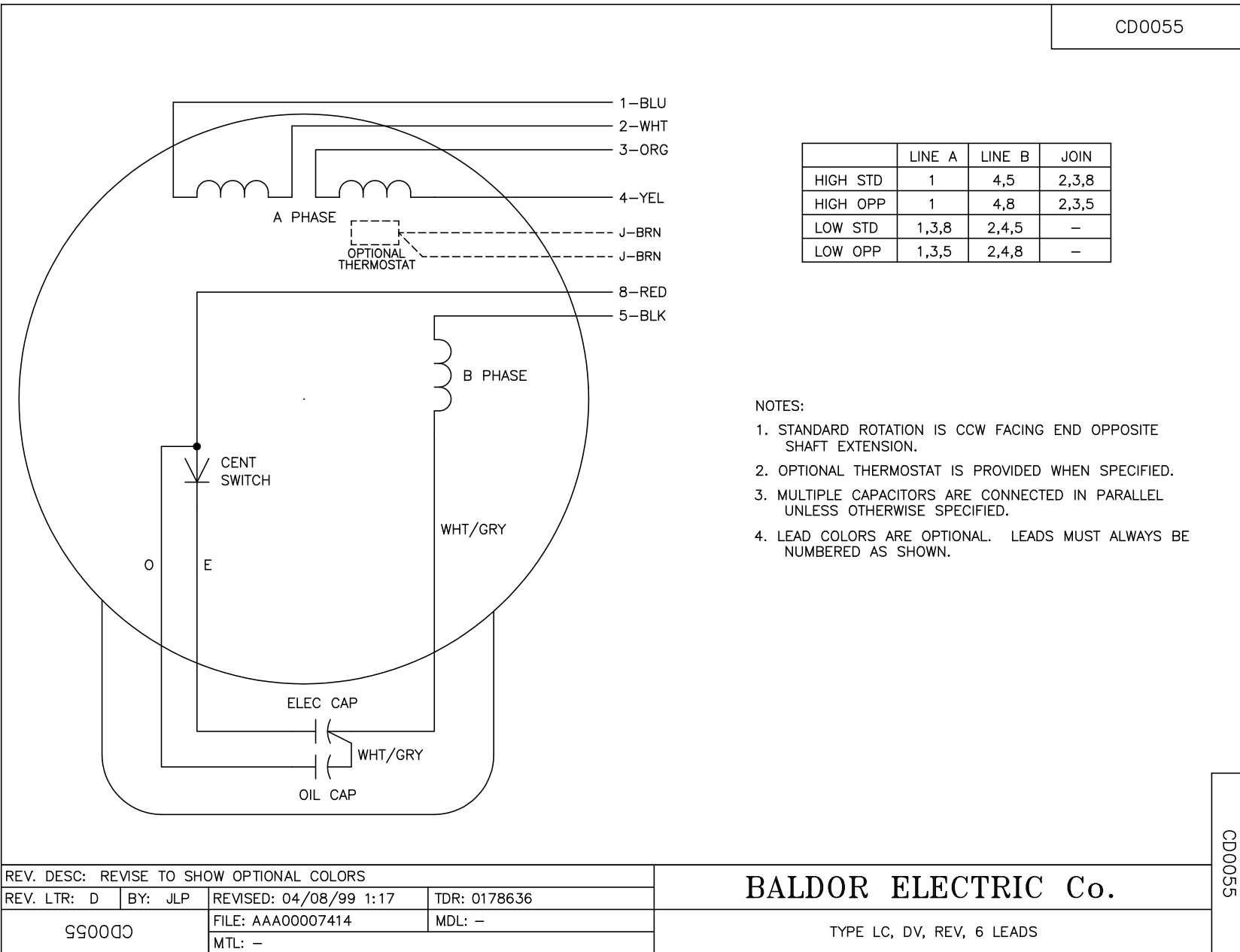
TORQUES (LB-FT): PO=2.5 PU=1.4 LR=1.8 LRA=14.5



7/8/2026 ACPERF, record # 50675



CD0055



CD0055

REV. DESC: REVISE TO SHOW OPTIONAL COLORS			
REV. LTR: D	BY: JLP	REVISED: 04/08/99 1:17	TDR: 0178636
C00000		FILE: AAA00007414	MDL: -
		MTL: -	

BALDOR ELECTRIC Co.

TYPE LC, DV, REV, 6 LEADS