

ABB BALDOR RELIANCE III

Customer information packet

L1512T

10HP, 1725RPM, 1PH, 60HZ, 215T, 3737LC, OPSB, F

Class - None

Division - Not Applicable

Specifications

Enclosure	OPSB
Frame	215T
Frame Material	Steel
Frequency	60.00 Hz
Haz Area Class and Group	None
Haz Area Division	Not Applicable
Motor Letter Type	Cap Start, Cap Run
Output @ Frequency	10.000 HP @ 60 HZ
Phase	1
Synchronous Speed @ Frequency	1800 RPM @ 60 HZ
Voltage @ Frequency	230.0 V @ 60 HZ
Agency Approvals	C UR US
Ambient Temperature	40 °C
Auxiliary Box	NO AUXILLARY BOX
Auxiliary Box Lead Termination	None
Base Indicator	Rigid
Bearing Grease Type	Polyrex EM (-20F +300F)
Blower	None
Current @ Voltage	39.000 A @ 230.0 V
Design Code	L
Drip Cover	No Drip Cover
Duty Rating	CONT
Efficiency @ 100% Load	85.5 %
Electrically Isolated Bearing	Not Electrically Isolated
Feedback Device	NO FEEDBACK
Front Face Code	Standard
Front Shaft Indicator	None
Heater Indicator	No Heater
High Voltage Full Load Amps	39.0 a
Insulation Class	F
Inverter Code	Not Inverter
KVA Code	E

Part Detail

Revision	R
Type	AC
Mech. spec.	37L969
Base	
Status	PRD/A
Elec. spec.	37WGT923
Layout	37LYL969
Eff. date	12-16-2024
CD Diagram	CD2094
Poles	04
Leads	2#10 A PH,2#14 B PH
Proprietary	False
Created date	11-16-2007

Lifting Lugs	Standard Lifting Lugs
Locked Bearing Indicator	No Locked Bearing
Motor Lead Exit	Cap Box
Motor Lead Quantity/Wire Size	2 @ 10 AWG, A PH
Motor Lead Termination	Flying Leads
Motor Standards	NEMA
Motor Type	3737LC
Mounting Arrangement	F1
Number of Poles	4
Overall Length	17.45 IN
Power Factor	97
Product Family	General Purpose
Pulley End Bearing Type	Ball
Pulley Face Code	Standard
Pulley Shaft Indicator	Standard
Rodent Screen	None
Service Factor	1.00
Shaft Diameter	1.375 IN
Shaft Extension Location	Pulley End
Shaft Ground Indicator	No Shaft Grounding
Shaft Rotation	Reversible
Shaft Slinger Indicator	No Slinger
Speed	1725 rpm
Speed Code	Single Speed
Starting Method	Direct on line
Thermal Device - Bearing	None
Thermal Device - Winding	None
Vibration Sensor Indicator	No Vibration Sensor
Winding Thermal 1	None
Winding Thermal 2	None

Nameplate

NP1256L										
CAT.NO.	L1512T									
SPEC.	37L969T923G1									
HP	10									
VOLTS	230									
AMP	39									
RPM	1725									
FRAME	215T		HZ	60			PH	1		
SER.F.	1.00	CODE	E	DES	L	CLASS	F			
NEMA-NOM-EFF	85.5	PF	97							
RATING	40C AMB-CONT									
CC										
DE	6307		ODE	6206						
ENCL	OPSB	SN								

Accessories

Part number	Description	Multiplier
37-1404	C FACE KIT	A8

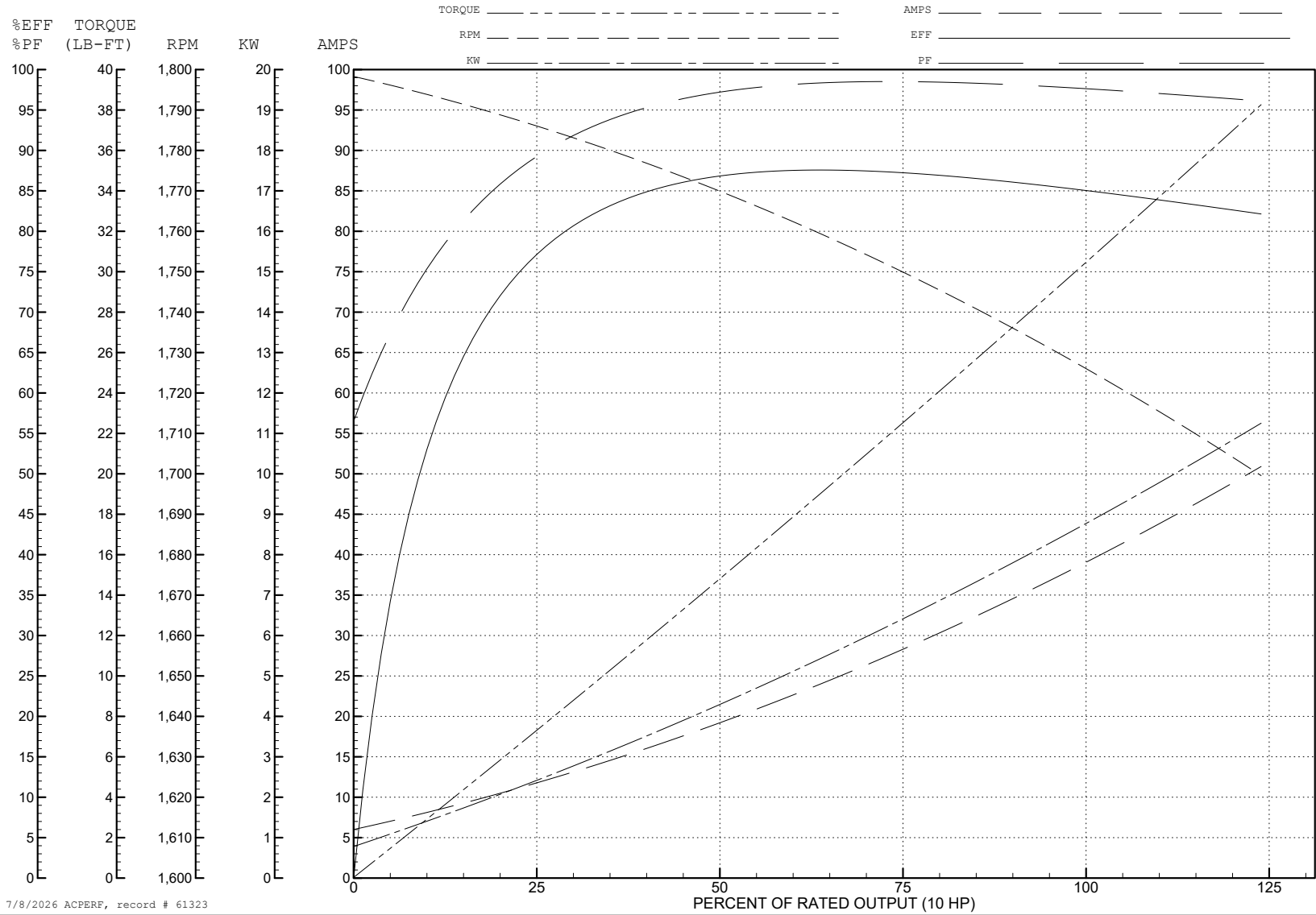
ABB Motors and Mechanical Inc.

WINDING # 37WGT923

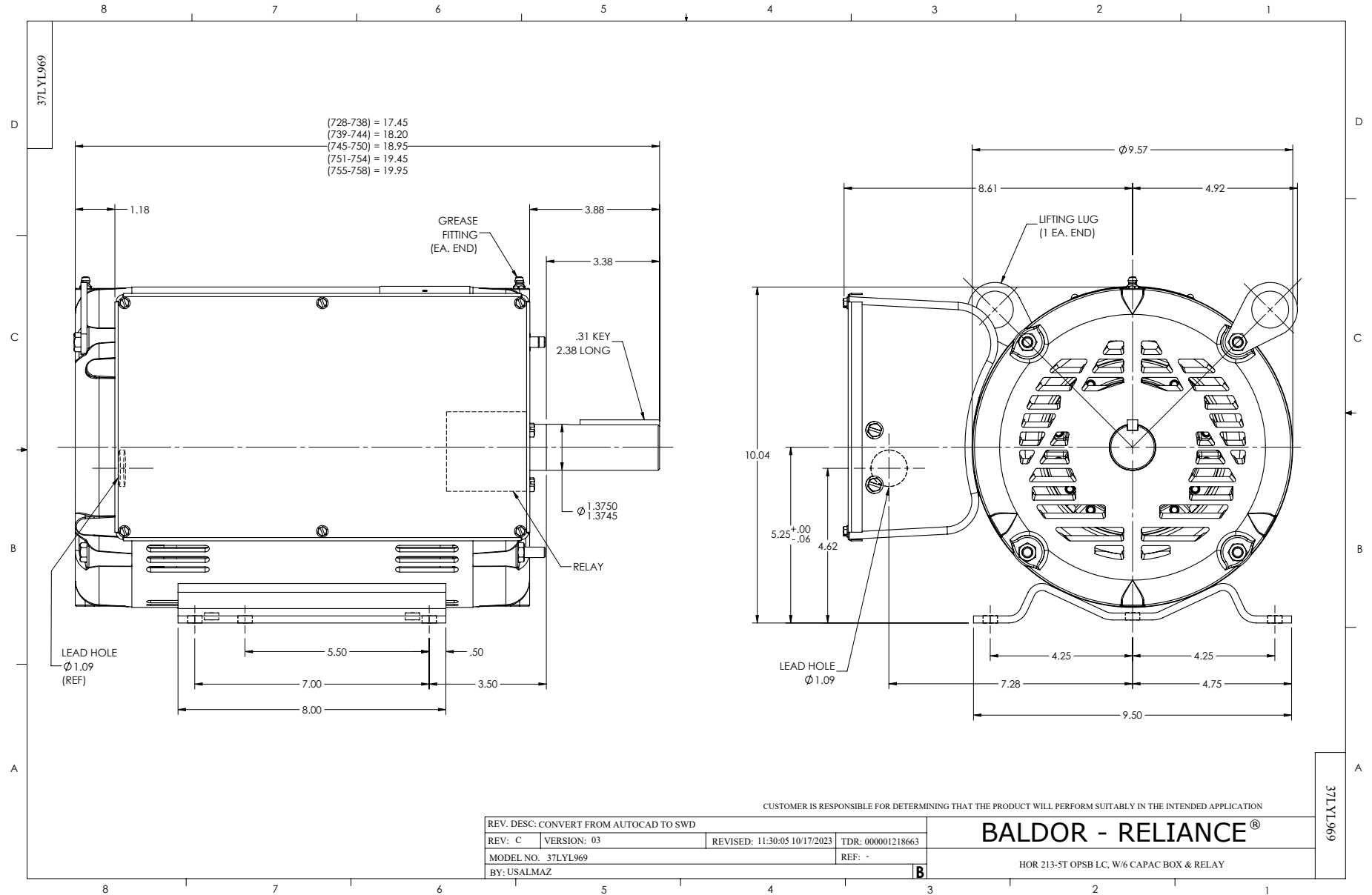
Typical performance - not guaranteed values.

10 HP 1 PH 60 HZ 1725 RPM 230 V 3737LC

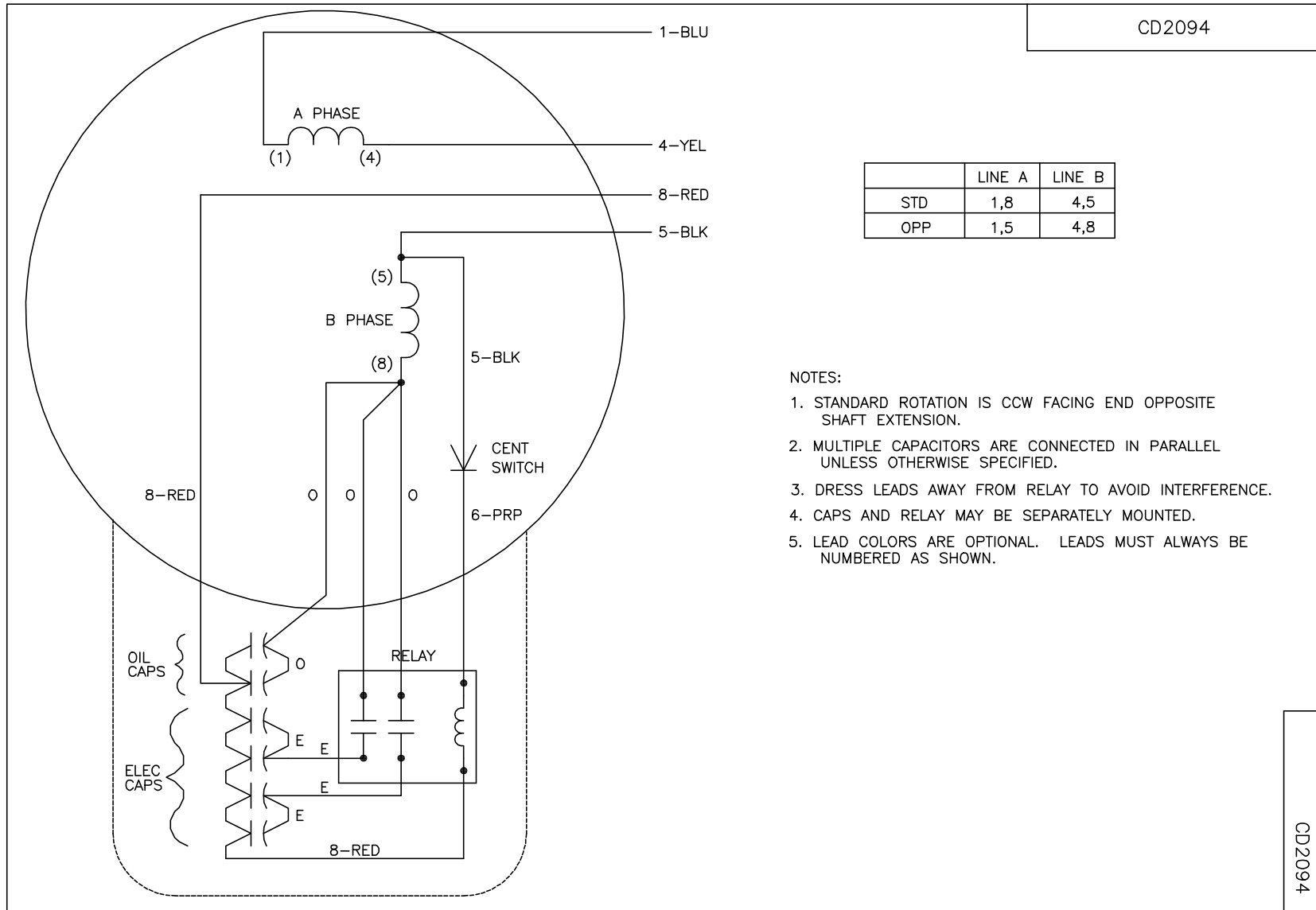
TORQUES (LB-FT): PO=76.1 PU=51.8 LR=78.4 LRA=211



7/8/2026 ACPERF, record # 61323



CD2094



	LINE A	LINE B
STD	1,8	4,5
OPP	1,5	4,8

- NOTES:
1. STANDARD ROTATION IS CCW FACING END OPPOSITE SHAFT EXTENSION.
 2. MULTIPLE CAPACITORS ARE CONNECTED IN PARALLEL UNLESS OTHERWISE SPECIFIED.
 3. DRESS LEADS AWAY FROM RELAY TO AVOID INTERFERENCE.
 4. CAPS AND RELAY MAY BE SEPARATELY MOUNTED.
 5. LEAD COLORS ARE OPTIONAL. LEADS MUST ALWAYS BE NUMBERED AS SHOWN.

CD2094

REV. DESC: NEW		
REV. LTR: -	VERSION: 00	TDR: 000000570759
FILE: \AAA\00177\864	REVISED: 11:52:42 12/14/2010	
MTL: -	BY: ENMICWO	

BALDOR

TYPE LC, SV, REV, 4LD, RELAY W/CENT SWITCH
SH 1 of 1